



Scan for more information

# **FLT-11**

---

## **User Manual**

## Table of Contents

Caution.....	3
Specifications.....	4
Dimensional Drawing.....	5
Mounting Hole Dimensional Drawing.....	6
Components/Setup.....	7
Operation/Reset Procedure.....	8

**Have any queries? Our expert engineers are here to help!**



[sales@progressiveautomations.com](mailto:sales@progressiveautomations.com)



1-800-676-6123



[progressiveautomations.com](http://progressiveautomations.com)

# Caution



Ensure no obstacles are in the column's path. Ensure the column is not touching any walls. Ensure all cords are appropriate length to accommodate the change in height.



**Warning**  
**Pinch Point**  
Keep hands and fingers clear.



Keep children away from electric height-adjustable lifting columns, control units, and handsets. There is a risk of injury and electric shock.



Keep all electrical components away from liquids.



Do not sit or stand on the lifting column. Do not crawl or lie under the lifting column.



Do not place any objects taller than 20" underneath the lifting column.



During the Reset Procedure, the lifting column will retract **7mm below the lowest normal operating height**. Ensure no obstacles impede this motion of travel.

# Specifications

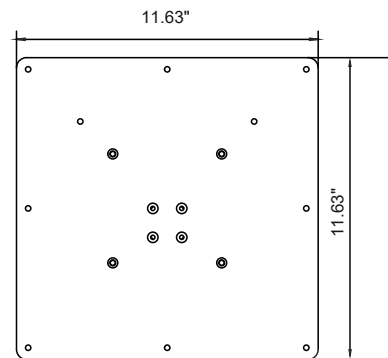
<b>Input Voltage</b>	120 VAC, 60 Hz
<b>Output Voltage</b>	24 VDC
<b>Stroke</b>	16.5"
<b>Weight Capacity</b>	225lbs
<b>Speed</b>	0.5"/sec
<b>Height Range</b>	12" - 28.5"
<b>Duty Cycle</b>	10% Max. 2 mins on, 18 mins off
<b>Material</b>	Aluminium Alloy
<b>Temperature Rating</b>	5C to 40C

<b>Feature</b>	<b>Description</b>
<b>Start and Stop</b>	The tablelift will accelerate to maximum speed and decelerate to a stop to ensure smooth travel.

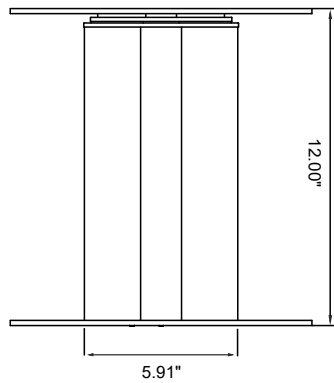
# Dimensional Drawing

Lifting Column

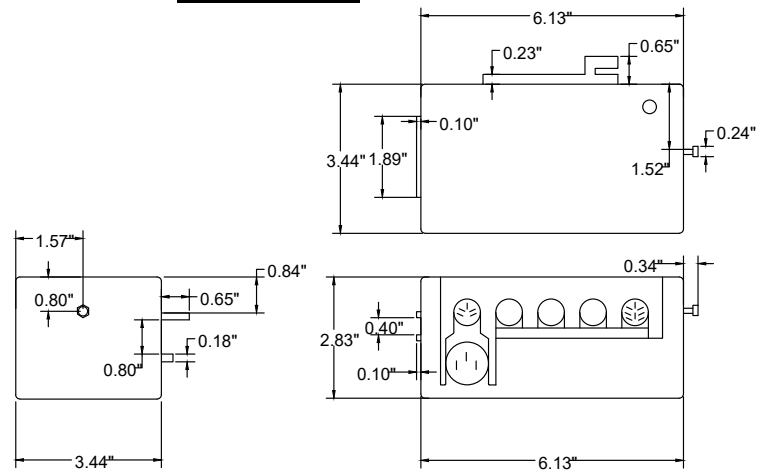
Top & Bottom



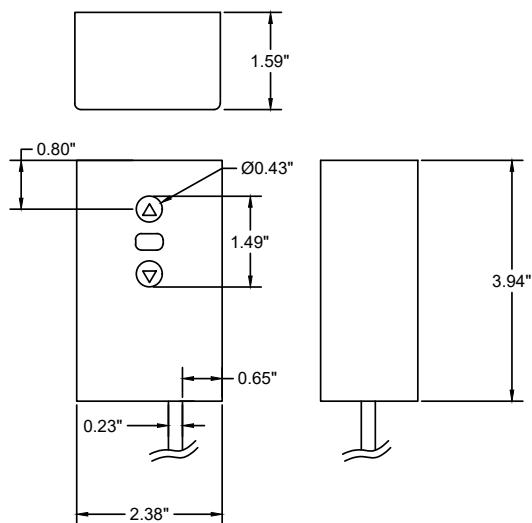
Column



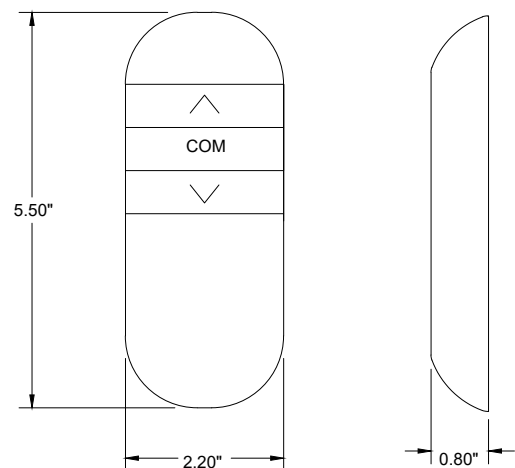
Control Box



Wired Remote

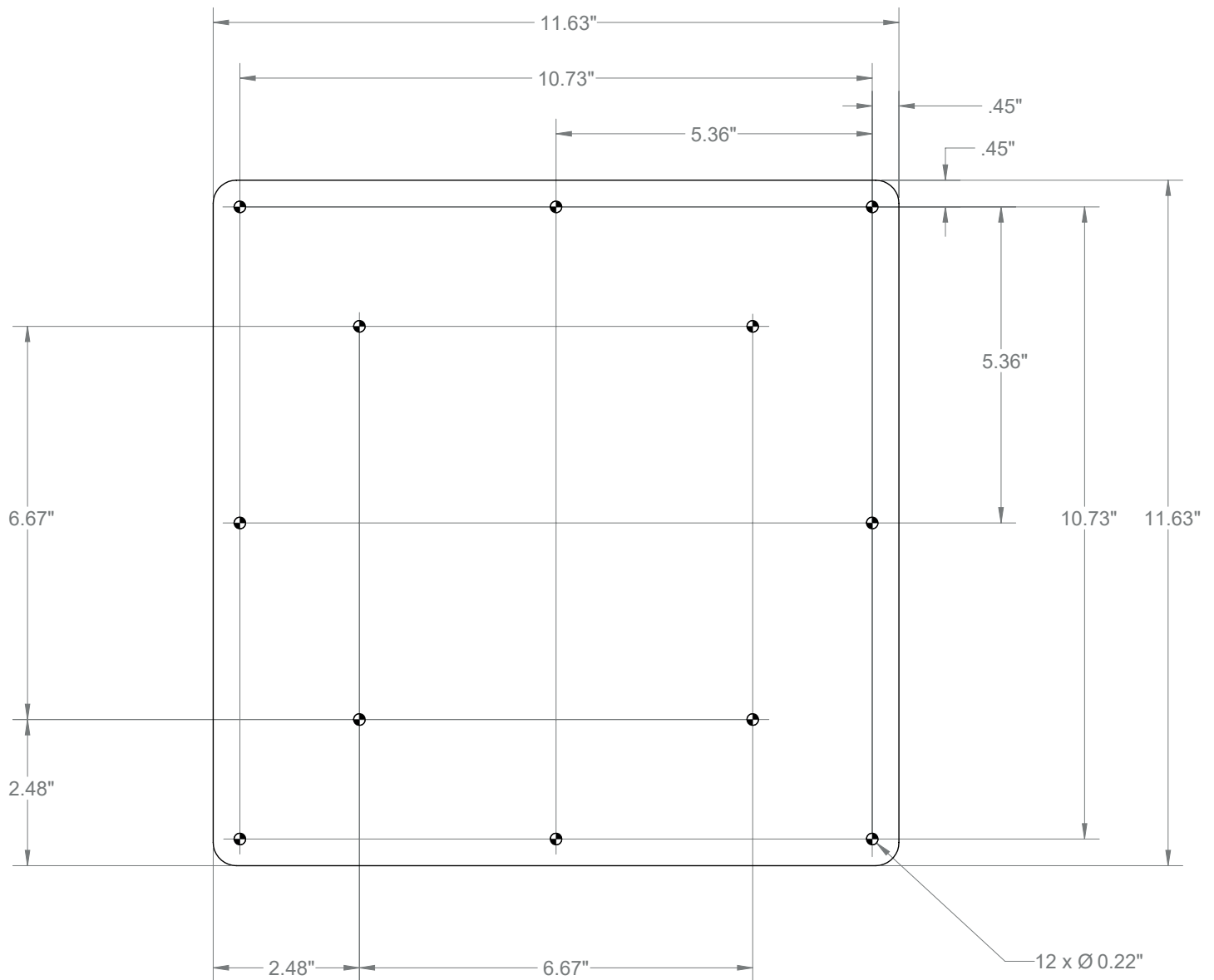


Wireless Remote



# Mounting Hole Dimensional Drawing

The mounting hole drawing is applicable to top and bottom of the lifting column.  
Power cable exits through the bottom - spacers are included to prevent pinching of the cable.



# Components

Lifting Column



Control Box



AC Power Cord



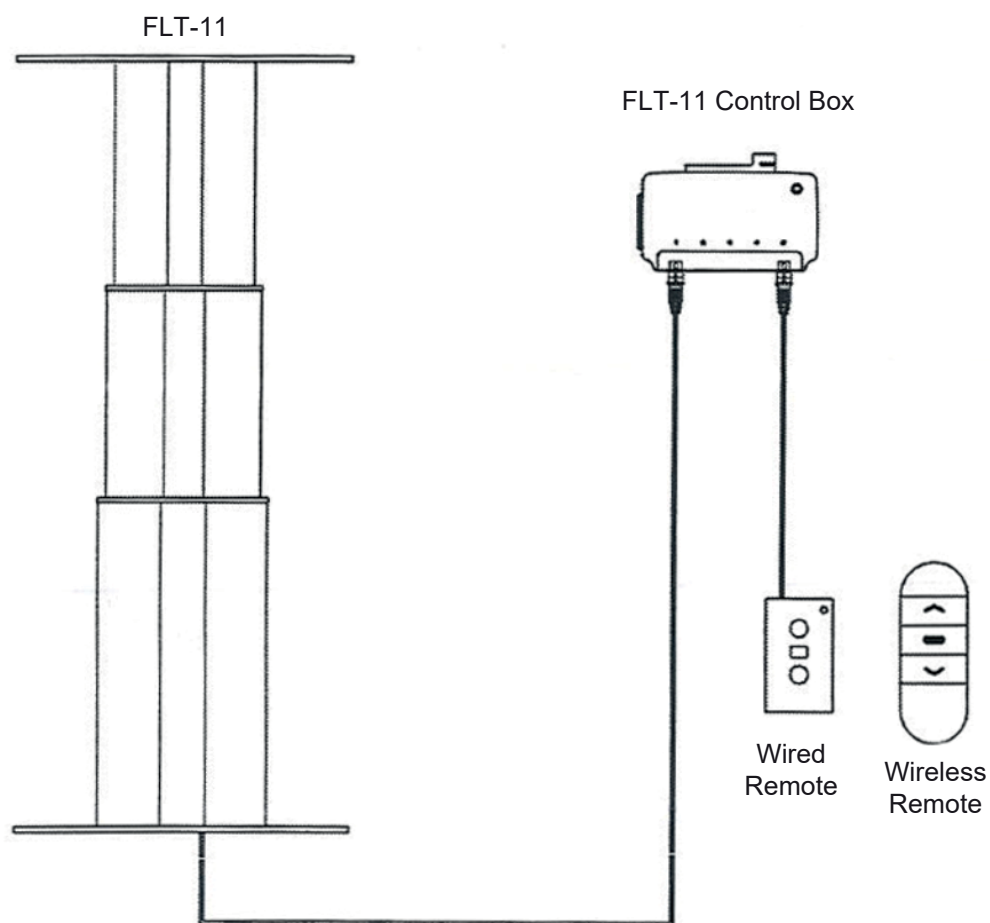
Wired Remote



Wireless Remote



# Setup



# Operation Procedure

Use the wired or wireless remote for full up and down motion control. The non-momentary buttons allow the user to press the buttons for both up and down control. Pressing any button while in motion will stop the column.

## Pairing the wireless remote

Press the UP and DOWN buttons on the wireless remote while simultaneously pressing the button on the side of the control box for 10 seconds. The control box will emit a single beep to confirm the pairing procedure has started. After 10 seconds, the wireless remote is now ready for use.

LED Light: A green light will indicate the column is in normal operation. A red light will indicate that the column is locked. Please see the unlocking procedure below.

# Reset Procedure

To reset the lifting column, press and hold the down button of the wired hand remote. After 10 seconds, the green light on the hand remote will start flashing. This indicates that the lifting column is in reset mode. To complete the reset procedure, press and hold the down button for 10 seconds until the green light stops flashing.

# Safety Features

This column comes with a built-in self-locking features, when left idle for 10 seconds, the column will lock and will be unresponsive to controls.

If the LED light is red, this will indicate you must unlock the column in order to lower the lift. Press and hold the DOWN button for 5 seconds on either remote to unlock the lifting column for full control.

Anti-collision sensor: When retracting the lifting column, the control box will detect any obstructing objects. Once detected, the column will stop and rise slightly.

Overcurrent Protection: While in motion, the controller will detect a current spike. When sensing a current spike of 6.5A, the lifting column will stop to prevent any overloading errors.

**Have any queries? Our expert engineers are here to help!**



[sales@progressiveautomations.com](mailto:sales@progressiveautomations.com)



1-800-676-6123



[progressiveautomations.com](http://progressiveautomations.com)