



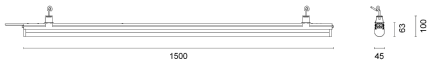
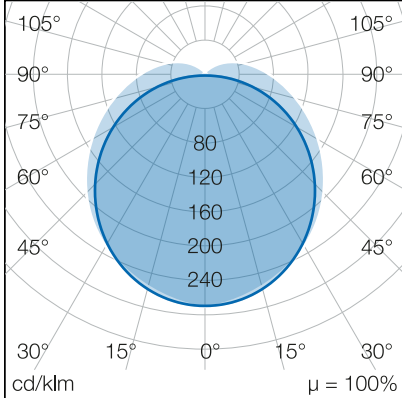
Art.Nr.: 711550600169
EAN: 4260374017639

ClickLUX EASY 5000K



LIGHT DISTRIBUTION CURVE

TECHNICAL DRAWING



LIGHT INFORMATION

beam angle	130°
color temperature	5.000 K
color tolerance	< 4 SDCM
color rendering index	> 80

PROPERTIES

through-wiring	3 x 1,5 mm ²
connection	Plug: 3-pole max. 2,5 mm ²
power factor	> 0.95
module per circuit breaker B10A	7
module per circuit breaker B16A	12
module per circuit breaker C10A	12
module per circuit breaker C16A	20
switching cycles	> 500.000
voltage range AC	220 – 240 V AC, 50/60 Hz

ORDER OVERVIEW

ClickLUX EASY 4000K	
product code	711550600169
EAN code	4260374017639
warranty	3 years

ACCESSORIES

Cord suspension 2m
Cord suspension 5m
ClickLUX EASY blank module
ClickLUX EASY Connector-Set
ClickLUX EASY mounting clip for ceiling

PERFORMANCE

luminous efficiency	148 lm/W
system performance	58 W
luminous flux	8.600 lm
dimnable	Dip switch (100/50%)

RESILIENCE

protection class	I
impact resistance	IK06
protection type	IP40
lifespan	> 50.000 h [L80, B10]
UV resistant	No
operating temperature	-20 to +50 °C
foodready	Yes

MATERIAL

cover	diffuse cover
material (cover)	PC
material (housing)	Aluminium
housing color	Grey

SCOPE OF DELIVERY

includes 2x chain suspensions

DIMENSION

L x W x H / Ø (H2)	1.500 x 45 x 63 (101) mm
weight	1,4 kg