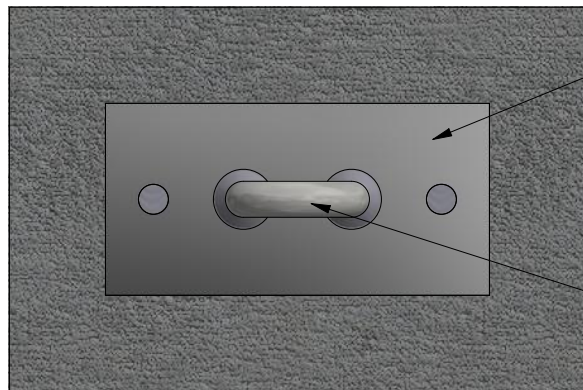
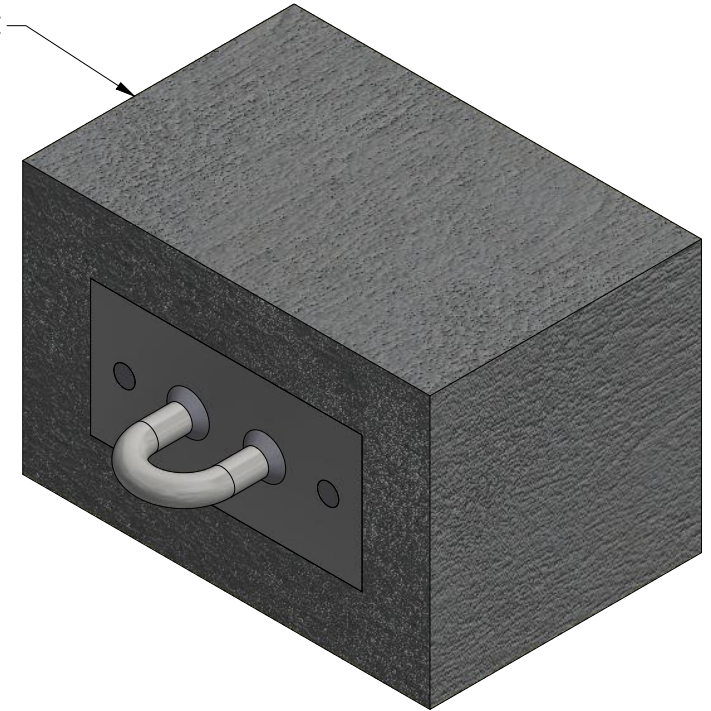


STAINLESS STEEL WELDED EMBED BOLT  
(TYP 2 PLACES)

AS  
REQUIRED

CONCRETE  
(PER PLAN)



STAINLESS STEEL FACE PLATE

STAINLESS STEEL U-BAR

**GENERAL MATERIAL SPECIFICATION:**

STAINLESS STEEL:	TYPE 304 (FY = 30 KSI)
SS THREADED ROD:	TYPE 304 (FY = 50 KSI)

SERIES NAME: CAST IN PLACE WALL ANCHOR (HORIZONTAL U-BAR)  
SERIES NUMBER: WA-2400

RATED LOAD: 1,250 LBS  
FRACTURE LOAD: 5,000 LBS



ANCHORS@FALLPROTECT.COM

PH 866-387-9965

WWW.FALLPROTECT.COM