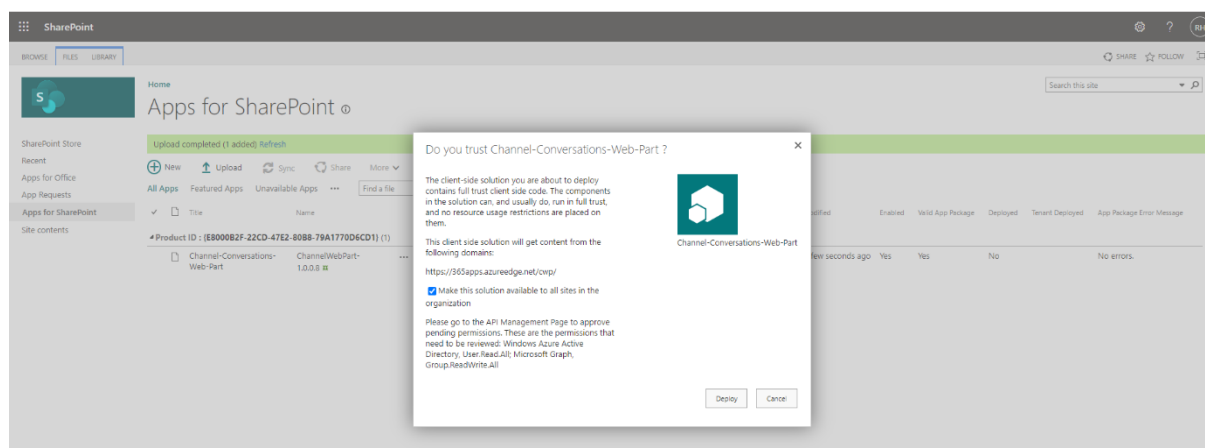


Channel Web Part

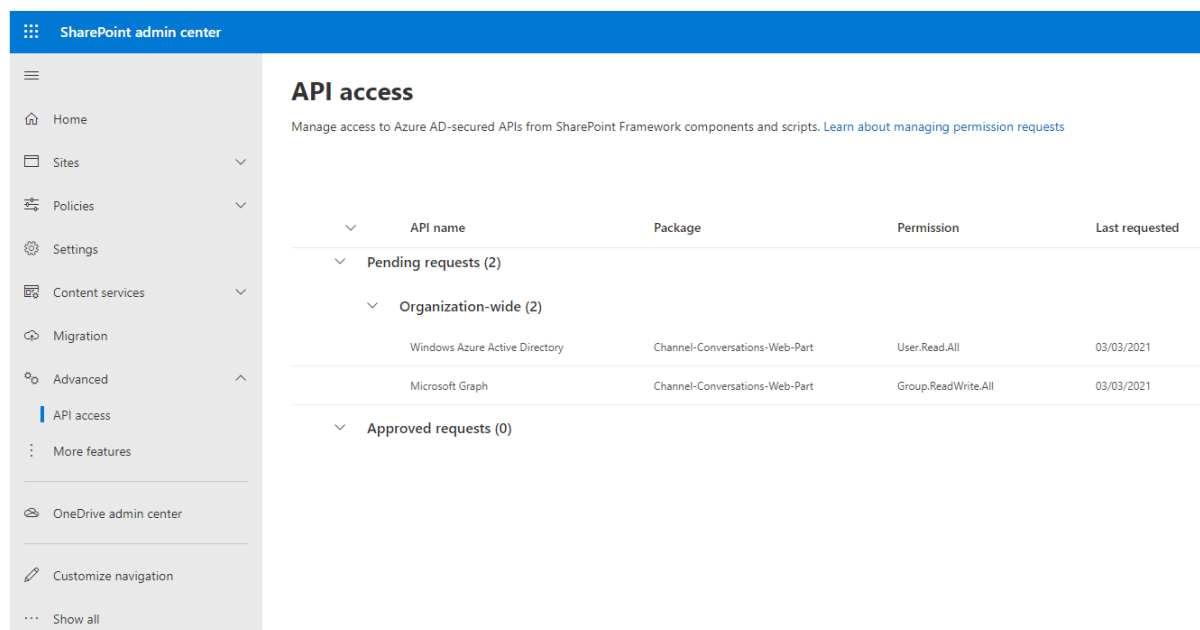
Web part installation

1. Visit your Office 365 SharePoint Admin Center
2. Go to More Features > Apps
3. Click "App Catalog"
4. Click on the Apps for SharePoint link in the quick launch. Your page will look like this:
5. (if your App catalog library does not appear in classic mode please change this option in library settings > advanced or click return to classic SharePoint in the bottom left corner of the screen)
6. Click **Upload** and select the **sppkg** file
7. Choose to Deploy the solution as required.



API Access Permissions

The web part requires API permissions to be enabled in order for the Microsoft Graph queries to have access to the required data sources. The permission scopes needed are



The screenshot shows the SharePoint Admin Center interface. The left sidebar contains navigation links: Home, Sites, Policies, Settings, Content services, Migration, Advanced, API access (selected), More features, OneDrive admin center, and Customize navigation. The main content area is titled 'API access' and includes a sub-header 'Manage access to Azure AD-secured APIs from SharePoint Framework components and scripts. [Learn about managing permission requests](#)'. Below this is a table with columns: API name, Package, Permission, and Last requested. The table is divided into two sections: 'Pending requests (2)' and 'Approved requests (0)'. Under 'Pending requests (2)', there is a sub-section 'Organization-wide (2)' containing two entries:

API name	Package	Permission	Last requested
Windows Azure Active Directory	Channel-Conversations-Web-Part	User.Read.All	03/03/2021
Microsoft Graph	Channel-Conversations-Web-Part	Group.ReadWrite.All	03/03/2021

RESOURCE: WINDOWS AZURE ACTIVE DIRECTORY

SCOPE: USER.READ.ALL

RESOURCE: MICROSOFT GRAPH

SCOPE: GROUP.READWRITE.ALL

1. Visit your Office 365 SharePoint Admin Center
2. Go to Advanced > API Access
3. Highlight a pending request for the web part
4. Click Approve
5. Repeat for all other pending request for the web part