

Northwest AHEC Staff Directory

January 2022



Michelle Adams, BS
Program Assistant
336-713-7726
micadams@wakehealth.edu



Amy Basham, MBA
Financial Analyst II
336-713-7703
amendenh@wakehealth.edu



Andrew Brewer, MS
Instructional Technologist
336-713-7016
abrewer@wakehealth.edu

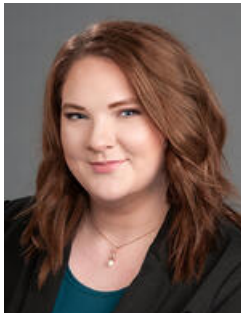


Reed Burger, MBA, CHFP
Assistant Director, Finance & Administration
336-713-7724
rburger@wakehealth.edu



Christina Clarke, DBH, MS, HS-BCP
Program Coordinator, Continuing Medical Education
336-713-7742
cclarke@wakehealth.edu

Lara Dickerson, BA, AAS
Quality Improvement Specialist
336-713-7753
ladicker@wakehealth.edu



Alana Dodson, MBA, RN
Nurse Educator
336-713-7713
ardodson@wakehealth.edu



Nedra Edwards Hines, MHA, CDP
Assistant Director, Continuing Education Services
336-713-7727
nedwards@wakehealth.edu



Karen Fritz
Program Coordinator, Continuing Medical Education
336-713-7718
kfritz@wakehealth.edu



Samantha L. Garvens, BS
Program Assistant
336-713-7754
sagarvens@wakehealth.edu



Angela Hodges
Program Coordinator, Student and Preceptor Support
336-713-7717
ahodges@wakehealth.edu



Ellen Hohf, MSN, RN, CHSE
Nurse Educator/RN Refresher Coordinator
336-713-7720
ehohf@wakehealth.edu



Lee Howard, BS
Lead Programmer Analyst
336-713-7015
lehoward@wakehealth.edu



Michael Hulme, PhD

Coordinator, Faculty Continuing Medical Education Committee

336-713-7710

mhulme@wakehealth.edu



Christopher (Chris) Jones, DrPH, MHA

Assistant Director, Quality and Informatics

336-713-7039

cjones@wakehealth.edu



Ellen Kesler, MLS, MPH, CPH

Program Coordinator, Behavioral Health

336-713-7712

ekesler@wakehealth.edu



Mona Ketner, MSN, RN, C-EFM

Nurse Educator

336-713-7730

mketner@wakehealth.edu



Brooke T. Kochanski, BS

Marketing & Communications Specialist

336-713-7705

bkochans@wakehealth.edu



Michael Lischke, Ed.D., MPH
Associate Dean, Continuing Medical Education
Richard Janeway, MD, Distinguished Director of
Northwest AHEC
Associate Professor, Family & Community Medicine
336-713-7744
mlischke@wakehealth.edu



Lindsey MacLean, MPH, CHES
Program Coordinator, Allied and Public Health
336-713-7708
lindsey.maclean@wakehealth.edu



Leslie D McDowell, DNP, ANP-BC, RN
Quality improvement Specialist / QI Curriculum Coordinator
336-713-7731
ldmcdowe@wakehealth.edu



Melanee Mills, MSED
Program Coordinator, Health Careers and Workforce Diversity
336-713-7714
mgmills@wakehealth.edu



Janice Moore, MLS
Professional Outreach Librarian
Northwest AHEC Library
336-618-0310
jdmoore@wakehealth.edu



Gail Pawlik, BA
Program Assistant
336-713-7761
gpawlik@wakehealth.edu



Amanda Pearson
Program Assistant
336-713-7715
awpearso@wakehealth.edu



Marie Simos
Associate Administrative Coordinator
336-713-7721
msimos@wakehealth.edu



Lisa Thomas
Program Assistant
336-713-7729
lisathom@wakehealth.edu



Leigh Watkins
Accounting Technician IV
336-713-7733
lwatkins@wakehealth.edu



Medina Wilson, MBA-HM, CPC, CPPM, CFD
Sr. Quality Improvement Specialist
336-713-7711
mewilson@wakehealth.edu