

# Northwest AHEC Staff Directory

February 2021



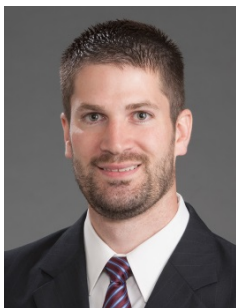
**Michelle Adams, BS**  
*Program Assistant*  
336-713-7726  
[micadams@wakehealth.edu](mailto:micadams@wakehealth.edu)



**Amy Basham, MBA**  
*Financial Analyst I*  
336-713-7703  
[amendenh@wakehealth.edu](mailto:amendenh@wakehealth.edu)



**Andrew Brewer, MS**  
*Instructional Technologist*  
336-713-7016  
[abrewer@wakehealth.edu](mailto:abrewer@wakehealth.edu)



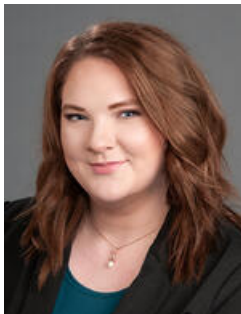
**Reed Burger, MBA, CHFP**  
*Assistant Director, Finance & Administration*  
336-713-7724  
[rburger@wakehealth.edu](mailto:rburger@wakehealth.edu)



**Christina Clarke, DrBH, MS, HS-BCP**  
*Program Coordinator, Continuing Medical Education*  
336-713-7742  
[cclarke@wakehealth.edu](mailto:cclarke@wakehealth.edu)



**Robin Daniels**  
*Northwest AHEC Library at Watauga Medical Center, Boone*  
828-262-4300  
[rdaniels@apprhs.org](mailto:rdaniels@apprhs.org)



**Alana Dodson, RN, MBA**  
*Nurse Educator*  
336-713-7713  
[ardodson@wakehealth.edu](mailto:ardodson@wakehealth.edu)



**Kojo Danquah-Duah, MPH, PMP**  
*Program Coordinator, Continuing Medical Education*  
336-713-7759  
[ndanquah@wakehealth.edu](mailto:ndanquah@wakehealth.edu)



**Nedra Edwards Hines, MHA, CDP**  
*Assistant Director, Continuing Education Services*  
336-713-7727  
[nedwards@wakehealth.edu](mailto:nedwards@wakehealth.edu)



**Karen Fritz**  
*Program Coordinator, Continuing Medical Education*  
336-713-7718  
[kfritz@wakehealth.edu](mailto:kfritz@wakehealth.edu)



**Angela Hodges**  
*Program Coordinator, Student and Preceptor Support*  
336-713-7717  
[ahodges@wakehealth.edu](mailto:ahodges@wakehealth.edu)



**Lee Howard, BS**  
*Lead Programmer Analyst*  
336-713-7015  
[lehoward@wakehealth.edu](mailto:lehoward@wakehealth.edu)



**Michael Hulme, PhD**  
*Coordinator, Faculty Continuing Medical Education Committee*  
336-713-7710  
[mhulme@wakehealth.edu](mailto:mhulme@wakehealth.edu)



**Christopher (Chris) Jones, DrPH, MHA**  
*Assistant Director, Quality and Informatics*  
336-713-7039  
[cjones@wakehealth.edu](mailto:cjones@wakehealth.edu)



**Ellen Kesler, MLS, MPH, CPH**  
*Program Coordinator, Behavioral Health*  
336-713-7712  
[ekesler@wakehealth.edu](mailto:ekesler@wakehealth.edu)



**Mona Ketner, RN, MSN, C-EFM**  
*Nurse Educator*  
336-713-7730  
[mketner@wakehealth.edu](mailto:mketner@wakehealth.edu)



**Brooke T. Kochanski, BS**  
*Marketing & Communications Specialist*  
336-713-7705  
[bkochans@wakehealth.edu](mailto:bkochans@wakehealth.edu)



**Michael Lischke, Ed.D., MPH**  
*Associate Dean, Continuing Medical Education*  
*Richard Janeway, MD, Distinguished Director of*  
*Northwest AHEC*  
*Associate Professor, Family & Community Medicine*  
336-713-7744  
[mlischke@wakehealth.edu](mailto:mlischke@wakehealth.edu)



**Lindsey MacLean, MPH, CHES**  
*Program Coordinator, Allied and Public Health*  
336-713-7708  
[lindsey.maclean@wakehealth.edu](mailto:lindsey.maclean@wakehealth.edu)



**Leslie D McDowell, DNP, ANP-BC, RN**  
*Quality improvement Specialist / QI Curriculum Coordinator*  
336-713-7731  
[ldmcdowe@wakehealth.edu](mailto:ldmcdowe@wakehealth.edu)



**Melanee Mills, MEd**  
*Program Coordinator, Health Careers and Workforce Diversity*  
336-713-7714  
[mgmills@wakehealth.edu](mailto:mgmills@wakehealth.edu)



**Janice Moore, MLS**  
*Professional Outreach Librarian*  
Northwest AHEC Library  
336-618-0310  
[jdmoore@wakehealth.edu](mailto:jdmoore@wakehealth.edu)



**Gail Pawlik, BA**  
*Program Assistant*  
336-713-7761  
[gpawlik@wakehealth.edu](mailto:gpawlik@wakehealth.edu)



**Amanda Pearson**  
*Program Assistant*  
336-713-7715  
[awpearso@wakehealth.edu](mailto:awpearso@wakehealth.edu)



**Marie Simos**  
*Associate Administrative Coordinator*  
336-713-7721  
[msimos@wakehealth.edu](mailto:msimos@wakehealth.edu)



**Lisa Thomas**  
*Program Assistant*  
336-713-7729  
[lisathom@wakehealth.edu](mailto:lisathom@wakehealth.edu)



**Leigh Watkins**  
*Accounting Technician IV*  
336-713-7733  
[lwatkins@wakehealth.edu](mailto:lwatkins@wakehealth.edu)



**Ryan D. Wilkins, BS**  
*Quality Improvement Specialist*  
336-713-8527  
[rdwilkin@wakehealth.edu](mailto:rdwilkin@wakehealth.edu)



**Medina Wilson, MBA-HM, CPC, CPPM, CFD**  
*Quality Improvement Specialist*  
336-713-7711  
[mewilson@wakehealth.edu](mailto:mewilson@wakehealth.edu)



**Tamela (Tammy) Yount, MSHAI**  
*Quality Improvement Specialist*  
336-713-7753  
[tyount@wakehealth.edu](mailto:tyount@wakehealth.edu)