



# CONCRETE PRODUCTION

- High Quality Concrete Production
- Sell More Concrete
- Optimise Your Operations
- Mobile Concrete Batching Plant

# Contents

3	Introduction
4	Mobile Concrete Production
10	Mobile and Semi-mobile Concrete
15	Principle of Operation
20	Models
44	Optional Equipment
49	Fibo Finance
51	Concrete Solutions
57	Business Ideas
62	Customer Stories
67	Contact Details

# OUR GOAL IS TO HELP YOUR BUSINESS MAKE MONEY PRODUCING HIGH QUALITY CONCRETE

Our mission is to help you make money by solving business problems, such as:

- Maximising profit in your business
- Selling more concrete
- Winning more tenders
- Concrete production in remote locations
- Saving money by optimising your concrete production

Some methods of solving these problems:

- Remote concrete batching plant
- Concrete production directly on site
- Concrete production using recycled materials
- Concrete production in inner-city building infrastructure



# MOBILE CONCRETE PRODUCTION



# FLEXIBILITY

Traditional concrete production methods are expensive and inconvenient for remote construction sites.

When buying a mobile concrete plant, you not only have the opportunity to produce concrete on site, but also save costs by reducing transport.

The cost of acquiring your plant will be paid off within six to twelve months.

Having finished your project, you can use your batching plant on other projects, saving 25% of standard readymix concrete purchase prices.

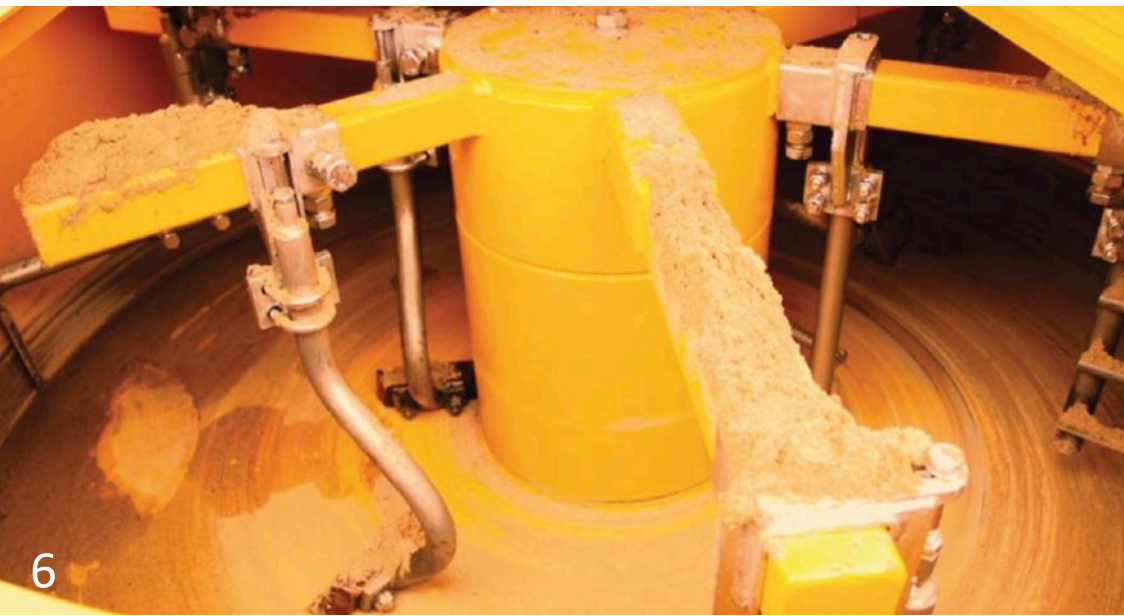
At the end of the project, you can also sell the plant or rent it out.

**YOUR FIBO BATCHING PLANT  
WILL MAKE YOU MONEY**





# QUALITY



A Fibo Intercon Mobile concrete plant doses with a standard setup to an accuracy of  $\pm 3\%$ , and with pre-weight cement an accuracy of  $\pm 1\%$ .

All concrete production is monitored by our in-house software. The computer is set up using tolerances for every part of the dosing process.

An alarm goes off if any tolerance goes over the settings.

Computer monitoring means that you can produce high-quality concrete in accordance with BS 8500 EN 206.

The software system can hold up to 50 concrete recipes. Each recipe can be changed with the press of a button and even remotely, using your mobile, tablet or PC.

**YOUR CONCRETE WILL ALWAYS  
MEET DESIGN SPECIFICATIONS**



# MINIMUM WASTE

Concrete waste is one of today's fundamental problems.

Concrete waste on-site can be 10/15%.

With Fibo concrete production, you can produce the exact amount of concrete that is needed, thus minimizing waste.

**YOUR CONCRETE WILL ALWAYS  
BE FRESH**





# ECONOMY

Concrete production at the construction site is very economical because you only pay for what you use.

You can order materials for concrete production and store them on site.

In Europe, the difference in price between concrete produced at the construction site and that produced in a factory is €10-30 per cubic metre.

**FOR EVERY PRODUCTION OF 100 CUBIC METRES OF CONCRETE, YOU SAVE OR EARN €1000 to €3000**





# PEACE OF MIND

Our concrete technicians can support you with your concrete mix design and concrete testing.

We can also help you with your concrete quality processes and systems to ensure you are delivering concrete to the customer's specifications.

**WE HAVE OUR OWN CONCRETE  
TESTING LABORATORY**







# MOBILE AND SEMI-MOBILE BATCHING PLANT

# Onsite Batching Makes Sense



Mobile and semi-mobile concrete plants are ideal where the delivery time of concrete is unacceptably long, the site is remote, or access is poor.

With a Fibo concrete plant, you can make high-quality concrete at the correct quantity when you want it, saving money and time.

No civil engineering required to build ramps or pits. The plant simply sits on flat ground.

Fibo mobile and semi-mobile concrete plants are plug and go, which allows rapid set up. The plant can be set up in a few hours.

**MOVING FROM ONE  
CONSTRUCTION SITE TO  
ANOTHER MEANS YOU CAN  
CAPITALISE ON UTILISATION  
AND MAKE MORE PROFIT**

Fibo Intercon also manufactures mobile cement silos that can be moved from one location to another, alongside the batching plant.

With Fibo LINK all batching data is stored in the cloud. You can print delivery and conformity documents for every batch.

Go to [www.fibointercon.com](http://www.fibointercon.com) and select a plant for your project

# MOBILE CONCRETE BATCHING PLANTS



Mobile concrete batching plant provides you with maximum flexibility.

Fibo has a range of mobile concrete plant to meet your needs. The batching plant is mounted on a chassis with wheels.

This facilitates transportation between sites.

Mobility has many benefits:

- Improving performance
- Maximum use of equipment resources
- Return on investment between 6 and 12 months

# SEMI-MOBILE CONCRETE BATCHING PLANT

Semi-mobile concrete plants give you significant advantages.

**MANUFACTURED TO THE  
HIGHEST STANDARD WITH HIGH  
QUALITY COMPONENTS**



Fibo Intercon mobile models can be used for a variety of purposes. Due to their performance, the output range is from 5 to 80 m<sup>3</sup> per hour. Semi-mobile concrete plants are manufactured on a frame with legs. The plant can be easily moved with a crane for a site loader.

The benefits are:

- Performance improvement
- Rapid setup with plug and go
- Maximum use of equipment resources
- Short payback period

The equipment comes with the latest software, updated via the Internet. It allows you to optimise your production saving money and time.









# PRINCIPLES OF OPERATION



The concrete plant is easily transported and quickly set up for production.

Concrete production is carried out in a factory or on the construction site. After connecting the cement silo, power and water supply, the plant is ready for production.

The computer software controls the batching and mixing process.

The plant includes a pan mixer and, depending on the model, 2 or 4 material bins. The material bins store sand and stone.

The plant also includes weight sensors, chemical pumps and a water jet for cleaning down after batching.

In addition, you can purchase extra chemical pumps for chemical additives, a water heating system, hopper vibrators, extended hopper plates and remote control.

## **TWO OR FOUR BIN OPTIONS**



# EASY TO USE

THE HOPPER CAN BE FILLED WITH A SMALL  
LOADER. NO INFRASTRUCTURE REQUIRED





# OPTIMISED PRODUCTION

## STATE OF THE ART SOFTWARE

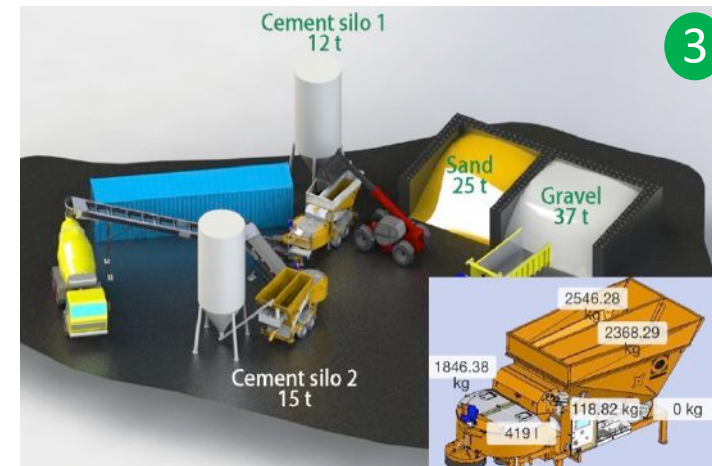
We have developed new software that allows you to optimise your concrete production, saving time and money by producing high quality concrete.

Our engineers can log in remotely to help you optimise production.

The software allows you to set quality tolerances and gives you warnings if any materials are batched out of tolerance.

We have a concrete to collect option to make selling concrete simple and effective.

- 1) 3 Year extended warranty available
- 2) Remote information control from your mobile
- 3) Stock and quality control made easy



# RELIABLE COMPONENTS

## PHOTO KEY

- 1) Good concrete quality is ensured by optimally positioned blades in the mixer
- 2) Precision dosing with three mixer weight sensors
- 3) Water is dispensed into the mixer using a meter.

Your concrete batching plant can have up to three chemical pumps which are controlled by computer software.

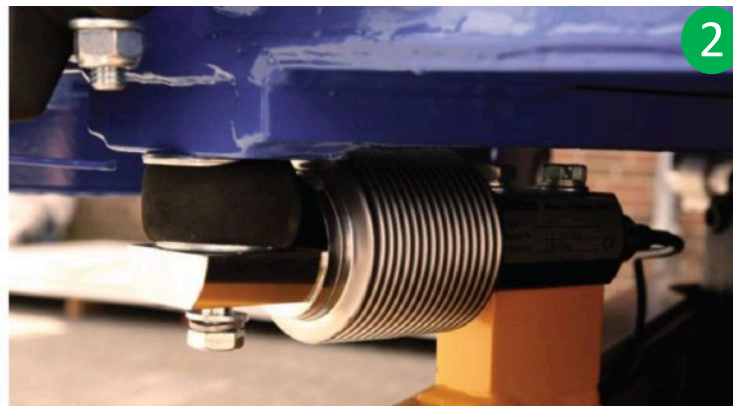
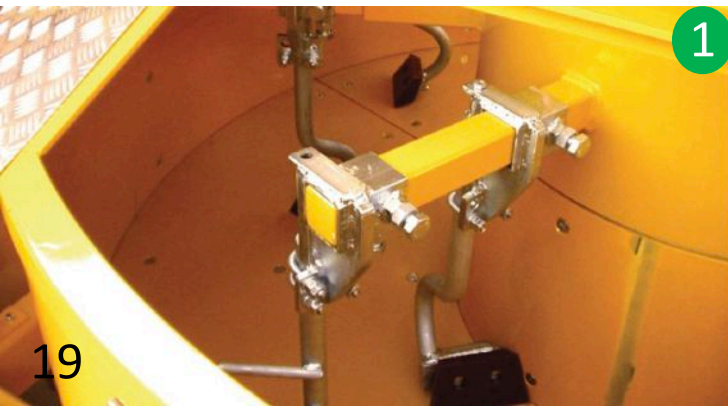
The chemicals are dispensed in accordance with the mix design.

All equipment is manufactured to a high standard, wear-resistant and durable. The mixer plates are made from Hardox 450.

Fibo concrete batching plants have a fifteen-year design life. We have plants that are over twenty years old and are still in full production.

The plant is robust and is a simple design delivering low repair and maintenance costs.

All its surfaces are easily washed with a high-pressure washer, and all parts are easily accessible for cleaning.







# MODELS

# MINI VIKING

The Mini Viking concrete plant is the ideal concrete production solution for small-scale construction.

This compact semi-mobile concrete installation high productivity: 4-5 m<sup>3</sup> / hour.



The Mini Viking is used on small construction projects. It's also used to mix small batches, for example, coloured concrete, proving far more economical when compared to large plants.

The mixing plant is mounted on a metal frame with adjustable leg height.

This plant has a concrete pan mixer, an integrated cement silo, and two separate built-in silos for sand and stone.

The Mini Viking includes conveyors, water tank and weight sensors. Dosing is controlled with computer software.

The plant can be supplied complete with a high-pressure washer and chemical pumps. Due to its small size and weight, the device can easily be transported on a car tow bar.





The Mini Viking batching plant can be used to make many concrete products or elements such as:

- paving slabs
- pavers
- pavement curbs
- curb elements
- environmental controls
- elements for road construction and land reclamation
- elements for livestock complexes
- electrical elements
- building structures
- stairs and steps
- works of art, and more

In the manufacture of these types of product, concrete produced in the installation is poured into appropriate forms for its gradual hardening.

**MANY ARCHITECTURAL  
ELEMENTS CAN BE  
PRODUCED**



# MINI VIKING



## MINI VIKING TECHNICAL SPECIFICATIONS:

Productivity	M <sup>3</sup> /hour	4-5
Volume (gross)	L	500
Volume mixed material	L	300
Motor	kW	7.5
Mixing arms/side scrapers	pcs	4
Aggregate hoppers	pcs	2 x 1.2 m <sup>3</sup> /2 x 1.9
Water tank	L	250
Dimensions W x H x L	M	2.08, 1.63, 4.95
Weight (Basic/Options)	kg	2400/2700
Supply voltage	V/A	400/20



# F1200

The F1200 is a semi-mobile concrete batching plant designed for the production of ready-mixed and high-quality concrete in remote places where concrete delivery is restricted.

Productivity: 10-16 m<sup>3</sup> / hour.

Dosing accuracy +-1-3% and +-1% with pre-weight cement



The F1200 is mounted on a metal frame with legs.

This plant has a concrete pan mixer, two built-in hoppers for materials, independent conveyors, water tank, weight sensors, dosing and measuring equipment with a control computer.

The plant is supplied complete with a high-pressure washer and can be transported on a flat bed wagon trailer.



# F1200



## TECHNICAL SPECIFICATIONS

Productivity	M <sup>3</sup> /hour	10/16
Volume (gross)	L	1200
Volume mixed material	L	800
Motor	kW	15
Mixing arms/side scrapers	pcs	5/1
Aggregate hoppers	pcs	2 x 2.4
Water tank	L	250
Dimensions W x H x L	M	2.39, 2.48, 5.5
Weight	kg	3500
Supply voltage	V/A	400/32

# B1200

# B1800

# B2200

The B Range of batching plant is a mobile type.

Productivity: 10 to 45 m<sup>3</sup> / hour.

Dosing accuracy  $\pm 1-3\%$  and  $\pm 1\%$  with pre-weight cement



This concrete plant is mounted on a metal frame with an axle and wheels.

It has a concrete mixer, two separate built-in inert hoppers, two independent conveyors, a water tank, weight sensors, equipment for dosing and a computer to control the operation.

It is supplied with a high-pressure washer, and the hoppers can be raised to increase capacity.

The plant can be transported on a flat deck wagon trailer, or towed on public roads up to 30 km/h.



# B1200 B1800 B2200

## TECHNICAL SPECIFICATIONS



		B1200	B1800	B2200
Productivity	M <sup>3</sup> /hour	10/16	20/30	25/45
Volume (gross)	L	1200	1800	2200
Volume mixed material	L	800	1100	1400
Motor	kW	15	30	55
Mixing arms/side scrapers	pcs	5/1	5/1	5/1
Aggregate hoppers	pcs	2 x 2.4m <sup>3</sup>	2 x 2.4m <sup>3</sup>	2 x 2.4m <sup>3</sup>
Water tank	L	250	500	500
Dimensions W x H x L	M	2.37, 2.57, 5.7	2.5, 2.57, 6.3	2.5, 2.57, 6.5
Weight	kg	3900	6500	8000
Supply voltage	V/A	400/32	400/80	400/125



# C1200

# C1800

# C2200

The C Range of batching plant is a semi-mobile type.

Productivity: 10 to 45 m<sup>3</sup> / hour.

Dosing accuracy +-1-3% and +-1% with pre-weight cement



This concrete plant is mounted on a hook frame with a hook and rollers.

It has a concrete mixer, two separate built-in inert silos, two independent conveyors, a water tank, weight sensors for dosing, and a computer to control the operation.

It is supplied with a high-pressure washer and the hoppers can be raised to increase capacity. The plant can be transported on a truck with a hook.

# C1200 C1800 C2200

## TECHNICAL SPECIFICATIONS



		C1200	C1800	C2200
Productivity	M <sup>3</sup> /hour	10/16	20/30	25/45
Volume (gross)	L	1200	1800	2200
Volume mixed material	L	800	1100	1400
Motor	kW	15	30	55
Mixing arms/side scrapers	pcs	5/1	5/1	7/1
Aggregate hoppers	pcs	2 x 2.4m <sup>3</sup>	2 x 2.4m <sup>3</sup>	2 x 2.4m <sup>3</sup>
Water tank	L	400	400	400
Dimensions W x H x L	M	2.5, 2.6, 5.5	2.5, 2.6, 6.0	2.55, 2.6, 6.0
Weight	kg	3900	6500	8000
Supply voltage	V/A	400/32	400/80	400/125



# F1800

# F2200

The F1800 and F2200 are semi-mobile batching plants and are designed for the production of ready-mixed and high-quality concrete.

The productivity of the plant is dependent on the model and setup and ranges from 25 to 45 m<sup>3</sup> per hour. The production of the dry mix can be up to 80 m<sup>3</sup> per hour.

Dosing accuracy  $\pm 1-3\%$  and  $\pm 1\%$  with pre-weight cement



This batching plant is mounted on a metal frame with legs.

It has a concrete mixer, four separate built-in hoppers, four independent conveyors, water tank, dosing weight sensors and a computer to control the operation of the plant.

It is supplied with a high-pressure washer and the hoppers can be raised to increase capacity.

The plant can be transported on a flatbed wagon or a lorry.



# F1800 F2200



## TECHNICAL SPECIFICATIONS

		F1800	F2200
Productivity	M <sup>3</sup> /hour	20/30	30/45
Volume (gross)	L	1800	2200
Volume mixed material	L	1000	1400
Motor	kW	30	55
Mixing arms/side scrapers	pcs	5/1	9/1
Aggregate hoppers	pcs	4 x 2.4 m <sup>3</sup>	4 x 2.4 m <sup>3</sup>
Water tank	L	500	500
Dimensions W x H x L	M	2.5, 2.65, 9.0	2.55,2.65, 9.1
Weight	kg	9800	10500
Supply voltage	V/A	400/80	400/125

# M1800 M2200

The M1800 and M2200 are mobile batching plants designed for the production of ready-mixed and high-quality concrete.

The productivity of the plant, depending on the model and setup, ranges from 25 to 45 m<sup>3</sup> per hour.

When producing dry mix, productivity can be up to 80 m<sup>3</sup> per hour.

Dosing accuracy  $\pm 1-3\%$  and  $\pm 1\%$  with pre-weight cement



This batching plant is mounted on a wagon frame with three axles and six wheels.

It has a concrete mixer, four separate built-in hoppers, four independent conveyors, water tank, dosing weight sensors and a computer to control the operation of the plant.

It is supplied with a high-pressure washer and the hoppers can be raised to increase capacity.

The plant can be towed on the road at 30 km/hr.



# M1800 M2200



## TECHNICAL SPECIFICATIONS

		M1800	M2200
Productivity	M <sup>3</sup> /hour	20/30	30/45
Volume (gross)	L	1800	2200
Volume mixed material	L	1100	1400
Motor	kW	30	55
Mixing arms/side scrapers	pcs	5/1	7/1
Aggregate hoppers	pcs	4 x 2.4 m <sup>3</sup>	4 x 2.4 m <sup>3</sup>
Water tank	L	500	500
Dimensions W x H x L	M	2.5, 2.65, 9.0	2.55,2.65, 9.1
Weight	kg	10500	11000
Supply voltage	V/A	400/80	450/125

# T2200

The T2200 mobile concrete plant is installed on a 13.6 metre 2-axle frame, semi-trailer.

The production capacity is 25-60 m<sup>3</sup> per hour.

When producing a dry mixture, we can achieve 70-80 m<sup>3</sup> per hour.

Dosing accuracy  $\pm 1-3\%$  and  $\pm 1\%$  with pre-weight cement.



The T2200 can have an integrated generator and a high-pressure standard washer.

There is an option for a pre-weight cement silo.

The concrete plant is mounted on a trailer.

This plant has a concrete pan mixer, four separate built-in hoppers, four independent conveyors, a water tank, weight sensors, dosing and a computer to control the operation.

The plant is transported on its own trailer.



# T2200



## TECHNICAL SPECIFICATIONS

Productivity	M <sup>3</sup> /hour	25/60
Volume (gross)	L	2200
Volume mixed material	L	1400
Motor	kW	55
Mixing arms/side scrapers	pcs	7/1
Aggregate hoppers	pcs	4 x 2.4 m <sup>3</sup>
Water tank	L	500
Dimensions W x H x L	M	2.55, 2.96, 13.6
Weight	kg	21,200
Supply voltage	V/A	400/125

# FI1800

Winter concrete plant for the production of concrete at low air temperatures down to  $-40^{\circ}\text{C}$  without compromising on quality and performance.

Production capacity 20 to  $30\text{ m}^3$  per hour.



This concrete plant is insulated with 100 mm insulation slabs and connected to an external generator.

The generator heats materials in the mixer and hoppers to  $70^{\circ}\text{C}$ . A constant temperature is maintained in the operator's cabin.

The unit also has an integrated service corridor, which allows you to control all the processes without going outside.

The concrete plant is welded onto a 40-foot container. This allows the concrete plant to be transported over long distances and on bad roads.



# FI1800

## TECHNICAL SPECIFICATIONS



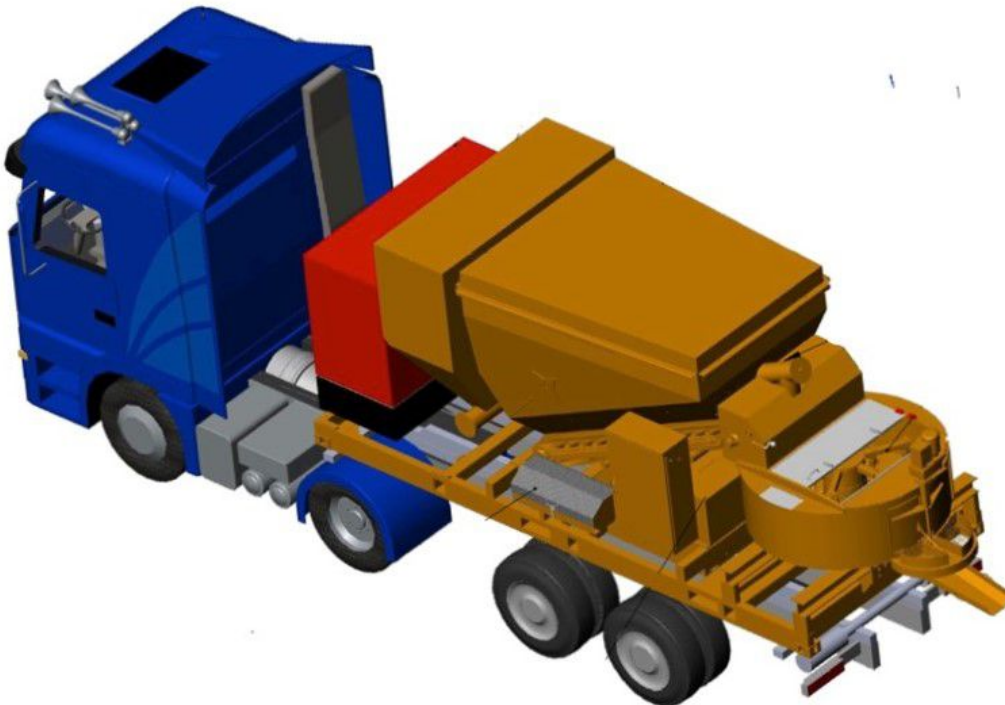
Productivity	M <sup>3</sup> /hour	20/30
Volume (gross)	L	1800
Volume mixed material	L	1100
Motor	kW	30
Mixing arms/side scrapers	pcs	5/1
Aggregate hoppers	pcs	4 x 2.4 m <sup>3</sup>
Water tank	L	1500
Dimensions W x H x L	M	2.44, 2.8, 12.2
Weight	kg	20,000
Supply voltage	V/A	400/80

Go to [www.fibointercon.com](http://www.fibointercon.com) and select a plant for your project

# TF1200

The dosing accuracy is  $\pm 1-3\%$  for the standard machine and  $\pm 1\%$  for machines with pre-weight cement and frequency control.

On an eight-hour shift, the plant can produce between 80 and **160 m<sup>3</sup>** per day. That's 14 to **26 standard loads** of concrete. The saving from buying ready-mix is about £25/m<sup>3</sup>.



**Concrete Truck** – The mobile concrete mixer truck arrives on-site with 7m<sup>3</sup> of materials on board to make concrete. You can also connect a cement silo and water supply to make concrete all day if you have sand and stone available on site.

The dosing accuracy conforms to BS 8500/EN206 so you can produce plain concrete as well as high-quality concrete for slip forms and reinforced structures.

The specification conforms to the new HGV regulations.

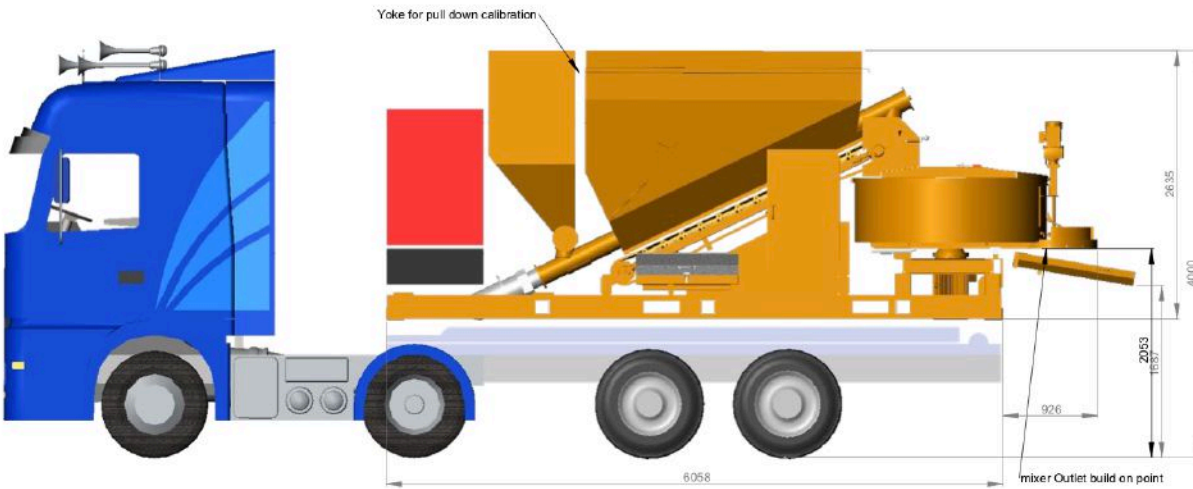
The load capacity is 7m<sup>3</sup> of mixed concrete.

The output is between 10 and 20 m<sup>3</sup>/hr, depending on the design of the truck and your design mix.



# TF1200

## TECHNICAL SPECIFICATIONS



Productivity	M <sup>3</sup> /hour	10/16
Volume (gross)	L	1200
Volume mixed material	L	800
Motor	kW	15
Mixing arms/side scrapers	pcs	5/1
Aggregate hoppers	pcs	2 x 2.4
Water tank	L	2000
Dimensions W x H x L	M	2.5, 2.6, 7.0
Weight	kg	6000
Supply voltage	V/A	400/32

# DOSING STATION

The dosing station can load 10 number 8 m<sup>3</sup> drum mixers per hour.

We have many options for the dosing station including one, two or three double bin units.



The Fibo Concrete DRY Batch Dosing Station has been designed to batch concrete for small ready-mix production, on-site concrete production for large construction sites and remote construction locations.

This mobile dosing station doses aggregates at temperatures as high as 30-60 degrees Celsius.

The standard dosing station consists of:

A trailer unit with a generating set, a water tank and a cement silo with cement filter.

A dosing unit with an integrated twin hopper for 2 types of aggregate, 2 separate feed belts, a weighing silo on load cells and an integrated operating system.

A 1 x 12 m belt conveyor with water dosed in the drum mixer from the conveyor or from the drum mixer.



# DOSING STATION



## TECHNICAL SPECIFICATIONS

Productivity	M <sup>3</sup> /hour	40/45
Volume (gross)	L	1800
Volume mixed material	L	2400
Motor	kW	4 x 400
Mixing arms/side scrapers	pcs	8
Aggregate hoppers	pcs	2x 2.4 m <sup>3</sup>
Water tank	L	5000
Dimensions W x H x L	M	2.44, 4.0, 13.6
Weight	kg	20,000
Supply voltage	V/A	400/60
Cement silo	m <sup>3</sup>	30

Go to [www.fibointercon.com](http://www.fibointercon.com) and select a plant for your project

# Batching Plant Production Tables

The table on the next page show the outputs for Fibo batching plant. There are two tables.

**Table 1** – Wet batched concrete using an M25/C20 concrete mix as an example.

**Table 2** – Dry batched concrete using an M25/C20 concrete mix as an example.

Dry-mix is used to batch drum mixers, and the mixing process happens in the drum wagon on the way to the site.

The different sizes of the batching plants are 2200 litres gross 1400 litres net, 1800 litres gross 1000 litres net and 1200 litres gross 800 litres net.

For example, the 2200 model produces  $1.4 \text{ m}^3$  of concrete per mixing cycle. Therefore, if the output were  $40 \text{ m}^3$  per hour, the number of cycles would be  $60 \text{ minutes} / (40 \text{ m}^3 / 1.4) = 2.1 \text{ minutes per cycle}$ .

## Definitions

**Pre-mix** – when the sand and stone is pre-mixed before batching. The Fibo batching plant can pre-mix the sand and stone and this can then be stored for use.

The advantage of using a pre-mix is that all the bins can be dosed at the same time, making it faster to dose into the mixing pan.

**Pre-weight cement** – when the cement is weighed before dosing. Cement pre-weigh uses the integrated main cement silo with weight cells on the feet, or a pre-weigh dosing cell can be attached to the plant on separate weigh cells as well.

The advantage of using pre-weight cement is that the cement can be batched at the same time as the sand. The computer already knows the weight of the cement and makes the allowance. Using pre-weight cement makes the batching process faster by  $4/5 \text{ m}^3$  per hour and improves the batching accuracy from  $\pm 3\%$  to  $\pm 1\%$ .

**Dosing Station** – a dry batch plant with no mixing pan. The plant doses onto a conveyor and then into a drum wagon for mixing. The advantages are less cleaning, and the plant is more price competitive.



# Batching Plant Production Tables

## HOW TO READ THE TABLES

- 1) Select the table you are interested in: **wet mix or dry mix**.
- 2) Select pre-mix or batching the sand and stone separately.
- 3) Select pre-weight cement or no pre-weight cement.
- 4) Read off the output in m<sup>3</sup> per hour for the size of plant you are interested in.

Table 1 – Wet Batch Mix

Id	Wet Concrete M25/C20	Pre-Weight Cement	2200 m <sup>3</sup> /hr	1800 m <sup>3</sup> /hr	1200 m <sup>3</sup> /hr	Dosing Station m <sup>3</sup> /hr
1	Premixed sand and aggregate dosed with all motors	Yes	41.8	31.5	23.8	N/A
2	Premixed sand and aggregate dosed with all motors	No	34.0	26.8	19.6	N/A
3	1 sand and 1 aggregate dosed separately using one motor at a time	Yes	37.1	24.5	18.8	N/A
4	1 sand and 1 aggregate dosed separately using one motor at a time	No	30.8	21.3	16.1	N/A

Table 2 Dry Batch Mix

Id	Dry Concrete M25/C20 Dosing Drum Mixer Trucks	Pre-Weight Cement	2200 m <sup>3</sup> /hr	1800 m <sup>3</sup> /hr	1200 m <sup>3</sup> /hr	Dosing Station m <sup>3</sup> /hr
5	Premixed sand and aggregate dosed with all motors	Yes	76.8	56.1	43.5	83.5
6	Premixed sand and aggregate dosed with all motors	No	54	42.6	31.3	64.4
7	1 sand and 1 aggregate dosed separately using one motor at a time	Yes	62.2	37.1	29.4	60.8
8	1 sand and 1 aggregate dosed separately using one motor at a time	No	46.3	30.3	23.3	50



# OPTIONAL EQUIPMENT



# ALUMINIUM CONCRETE CONVEYOR



The Fibo aluminium belt conveyor is supplied in widths of 0.8 m and 1 m – and lengths of 8 – 14 m.

Our aluminium belt conveyor is especially suited to carry gravel, sand, lightweight aggregate and concrete mixes.

The conveyor is built on two strong aluminium profiles and all other parts are galvanized.

A plough scraper is fitted onto the conveyor belts, which ensures that the internal sides of the belts are kept clean.

A band scraper, that scrapes material off the top side of the belts at the discharge point, is also fitted onto the belts.

All belt conveyors are delivered complete with drum motor with integrated gearbox, inlet and outlet funnel.

The belt conveyors are also delivered with lifting eyes for easy transportation.

## **CONVEYORS CAN BE SUPPLIED WITH WHEELS AND ARE FULLY ADJUSTABLE**

### **Standard Sizes:**

0.8 x 8 M  
0.8 x 10 M  
0.8 x 12 M  
0.8 x 14 M

1.0 x 8 M  
1.0 x 10 M  
1.0 x 12 M  
1.0 x 14 M

1.2 x 8 M  
1.2 x 10 M  
1.2 x 12 M  
1.2 x 14 M

Go to [www.fibointercon.com](http://www.fibointercon.com) and select a plant for your project



# VERTICAL CEMENT SILO

Fibo cement silos are fully welded constructions and can be filled by big bags or a cement tanker.

Designed for filling with big bags of easy-flowing material with a density up to  $1.6 \text{ T/M}^3$  e.g. Portland cement with a bulk density of  $1.13 \text{ T/M}^3$ .

Capacity from  $3$  to  $40 \text{ m}^3$



# BIG BAG CEMENT SILO



3 ton vertical big bag cement silo with height-adjustable support legs.

Designed for easy-flowing materials such as Portland cement or lime with a bulk density of 1.13 tonnes/M<sup>3</sup>.

The big bag silo comes with a platform to conform with EU health and safety regulations as standard.

Delivered complete with cement auger, counterweight for cement auger, cone with outlet flange, top hatch, grid for cement inlet, control unit, vibrator, lifting devices and lifting device for transportation with a forklift truck.

The big bag silo is ideal for small concrete batching set ups. For mobile batching plant, when you want to move it from site to site for a fast set up and go, the big bag silo does the job.

Go to [www.fibointercon.com](http://www.fibointercon.com) and select a plant for your project





# FIBO FINANCE

No Payments for Twelve months  
+  
Return on investment less than twelve months  
=  
A positive cashflow

# FIBO FINANCE

## KEY BENEFITS

Fibo Batching plant has a return on investment between 6 and 12 months.

No payment for 12 months allows the plant to generate the cash to pay for itself.

Finance your project - Buy moulds, cement silos, bucket loaders and concrete batching plant.

Everything you need to set up a new business for pre-cast, on-site and remote site concrete production.

Fibo Finance is a great way to grow and build your business.

Great for:

- Sweating the machine to earn money to pay for itself.
- No need to borrow or use your own capital.
- Having a positive cashflow and owning your new plant.
- Great to finance all your construction plant for a project.



**“IT’S THE WORLD’S BEST KEPT SECRET AND GREAT FOR YOUR BUSINESS”**





# Concrete Solutions

# Concrete Solution

## Onsite Concrete Batching

Batching concrete on-site has many advantages:

- Concrete on demand
- No waiting time
- No late concrete due to traffic or the plant being busy
- No part load charges
- Save 25% of a Ready-mix budget

Fibo Intercon batching plant is weight batched to  $\pm 1\%$  dosing accuracy using pre-weight cement.

With Fibo LINK our innovative software, you can produce certified concrete with delivery and conformity notes for each batch. Concrete can be produced on-site to BS 8500 - EN 206 easily with no hassle.



## PHOTO KEY

1. Onsite Concrete Production
2. Continuous slip form concrete
3. Concrete frame construction
4. Housing site concrete





# Concrete Solution

## Wind Farm Foundation Construction

The location of wind farms is generally remote with no concrete batching plant in the area.

Fibo Intercon mobile batching plant is an ideal solution. Whether the quantity is 300 m<sup>3</sup> or 600 m<sup>3</sup> of concrete required per pour.

Fibo has a batching plant to deliver the concrete on demand.

The Fibo solution can be far more economical than traditional batching plants.

The concrete is high quality with weight batching, and with Fibo LINK every batch is stored in the cloud. The data can then be printed out as delivery and conformity documents for every batch.



## PHOTO KEY

1. Wind Farm
2. Laying the blinding concrete
3. Foundation steel reinforcement
4. Concrete pour





# Concrete Solution

## NEW HOUSING PROJECTS

We sell a lot of Fibo batching plant for remote housing projects in Africa. The plants are used to manufacture concrete blocks and to make concrete for foundations.

House block manufacturing makes between 15,000 to 25,000 blocks per day.

Blocks can be made using a mix of recycled materials supporting the circular economy. We can design and build the whole solution.





# Concrete Solution



## SEA DEFENCE PROJECTS

With the climate changing and the seas rising, there is a requirement for robust sea defence projects.

Our engineers can design and build Tetrapod production close to the sea defence project to maximize economies.

We can supply 1.5, 3, 7.5, 10, 15, 20, 25-ton Tetrapod molds anywhere in the world, together with a fully operational batching plant.

## PHOTO KEY

1. Tetrapod sea defence groin
2. Tetrapod being fabricated
3. Tetrapod casting production
4. Completed blocks





# Concrete Solution

## CONCRETE INTERLOCKING BLOCKS

There are many ways that concrete interlocking blocks can be used in large numbers.

### PHOTO KEY

1. Moulds being prepared for concrete pour
2. Blocks being used to build structures
3. Reinforced concrete block retaining walls
4. Concrete block material bays
5. Sea defense blocks
6. River erosion blocks







# Business Ideas

# Business Ideas

## RENTING MOBILE BATCHING PLANTS

Renting Fibo concrete batching plant makes sense. The plant produces weight batched high quality concrete.

Mobile batching plants are used on inner city projects, remote sites such as Islands, wind farm locations, remote bridge construction and small construction sites.

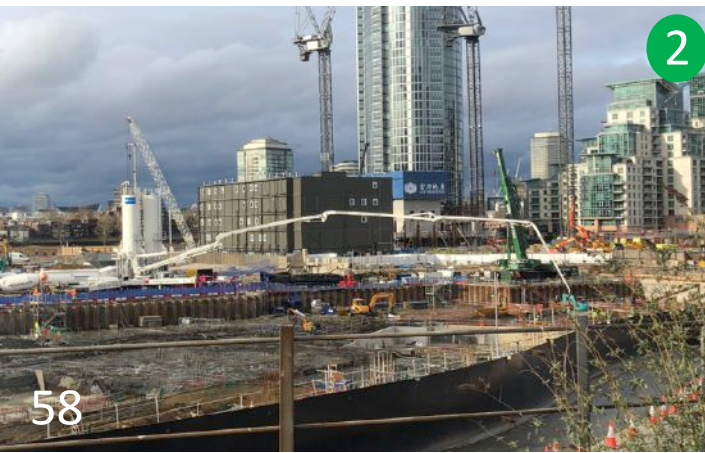
Many construction companies prefer to rent than purchase Fibo batching plant. This offers a great opportunity for construction plant businesses or to rent the plant out when you are not using it on your projects.



1

## PHOTO KEY

1. Plant hire yard
2. Hires for inner city projects
3. Hires for remote sites
4. Hires for slip form projects



2



3



4



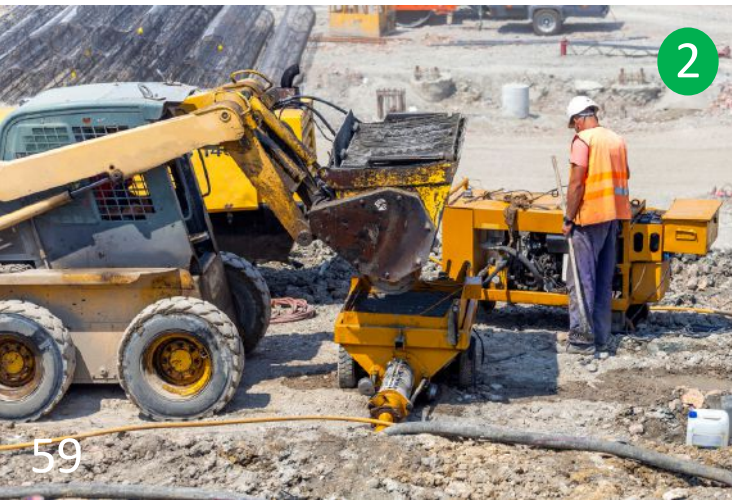
# Business Ideas

## Mining and Quarrying

Fibo batching plant is used within the quarry and mining sectors to produce concrete and shotcrete.

### PHOTO KEY

1. Concrete Batching Plant
2. Loading the shotcrete pump
3. Tunneling project
4. Rock stabilisation project





# Business Ideas



## RECYCLING CONSTRUCTION MATERIALS

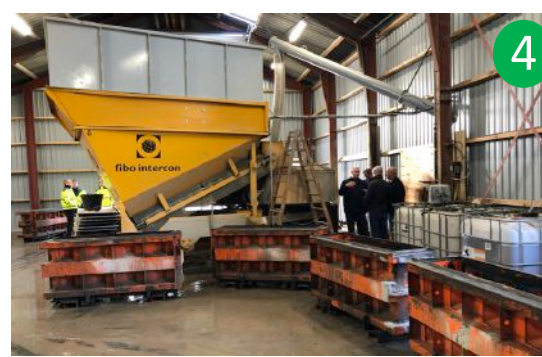
We have many customers who recycle construction materials such as:

- Demolition concrete
- Sanitary ware
- Glass
- Road sweepings

They then make concrete interlocking blocks from the recycled aggregates and sell them. This is a very economical business, as you get paid to take in the materials as well as for selling the blocks.

## PHOTO KEY

1. F2200 recycling concrete batching plant
2. Sanitary ware waste
3. Crushed sanitary ware
4. Concrete production
5. Completed blocks





# Business Ideas

## CONCRETE TO COLLECT

Builders merchants and recycling companies sell concrete to the public and small contractors who collect the concrete from their site.

Fibo have developed concrete-to-collect software to make the concrete sales simple and automated.

Your customer buys the mix and quantity of concrete from you. You give him a receipt that includes a code.

The customer puts the code into the plant, and the plant automatically batches and dispatches the concrete.



## SOIL STABILISATION

In Belgium they use a semi-dry mix of recycled aggregates and cement and use it under foundations and road construction.

The mix hardens and improves the ground-bearing capacity for construction.

The process is big business in Belgium and there are many companies making money from this solution.



## PHOTO KEY

1. Fibo LINK concrete-to-collect software
2. Selling foundation dry mix
3. Selling concrete to contractors



# CUSTOMER CASE STUDIES



# Case Study

## Vierendeel Beams and Columns for 22 Hanover Bond, London

Our customer Barret's of Asbury won the project to fabricate the feature Vierendeel frame to the facade of 22 Hanover Bond for their client Clivedale.

Clivedale is an independent super-prime developer based in Mayfair, London with an expanding portfolio of luxury real estate including residential, commercial and hotel projects in some of the Capital's most prestigious addresses.

The Vierendeel columns are manufactured from steel plate and reinforced with rebar, then filled with pigmented concrete to offer a unique architectural look.



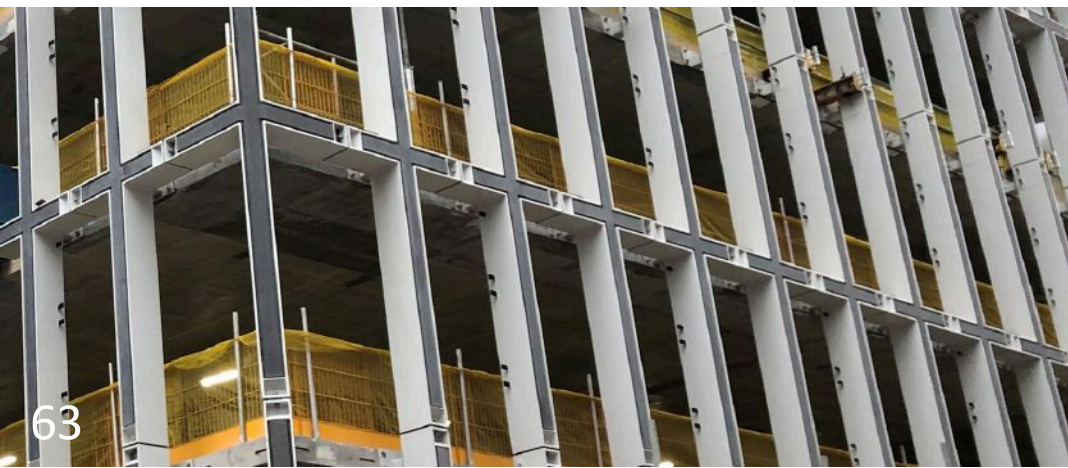
The steel columns and beams were being finished with black pigmented concrete that had to be consistent in colour for all the columns and beams; otherwise, they would be rejected by the client costing thousands of pounds.

The project managers of Barret's looked at a number of concrete batching plant companies and options. The final decision was to purchase a **Mini Viking** from Fibo.

The decision was made in favour of Fibo Intercon because we listened and adjusted the batching plant adding fine-tuning controls so that each batch of concrete would be consistent in batching and colour.

The fine-tuning involved adding a frequency controller to the cement auger motor. The speed of the cement auger is reduced by frequency converter and is controlled by the batching plant software during dosing.

You can see the results in the image on the left..



# Case Study

## Sabetta Airport

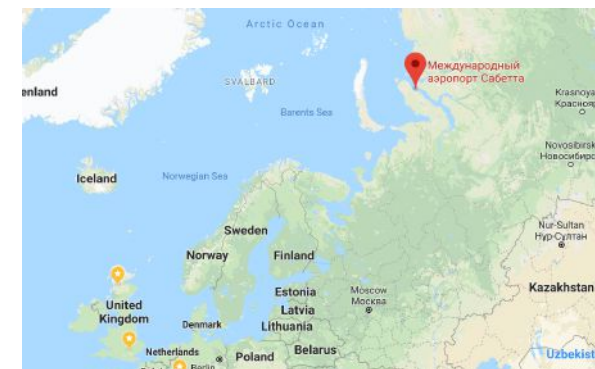
Sabetta Airport on Yamal Peninsula was built to fly construction and plant operators into the nearby gas fields.

Passenger numbers are about 150,000 per year. It is forecast to grow with the further development of the Arctic Region. The airport will also be able to receive cargo planes.

The soil-bearing capacity at the airport is very poor for construction. The solution was to mix the existing soil with cement and chemicals and replace it using a compactor.



Two F2200 fibo batching plants were used to build the airport and runways.





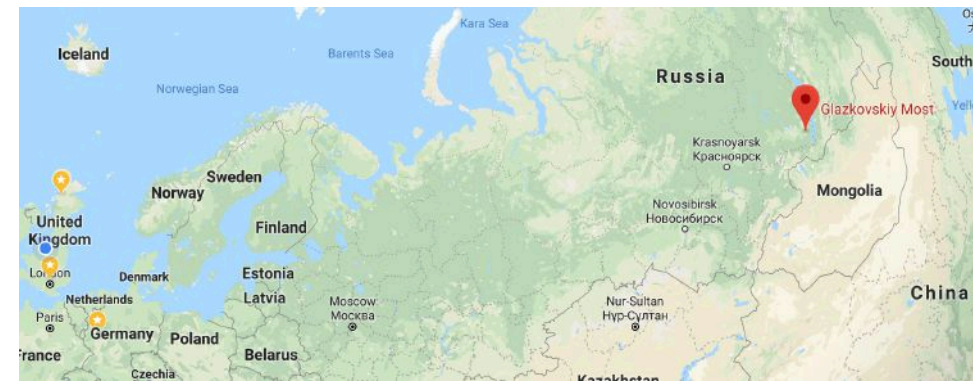
# Case Study

## Angara Bridge Construction

A new bridge was needed over the Angara river for the Boguchany Yurubchen Baikit freeway.

The bridge was a large civil engineering project, especially for such remote location from the main freeways.

A Fibo F2200 concrete batching plant was used to produce all the concrete.





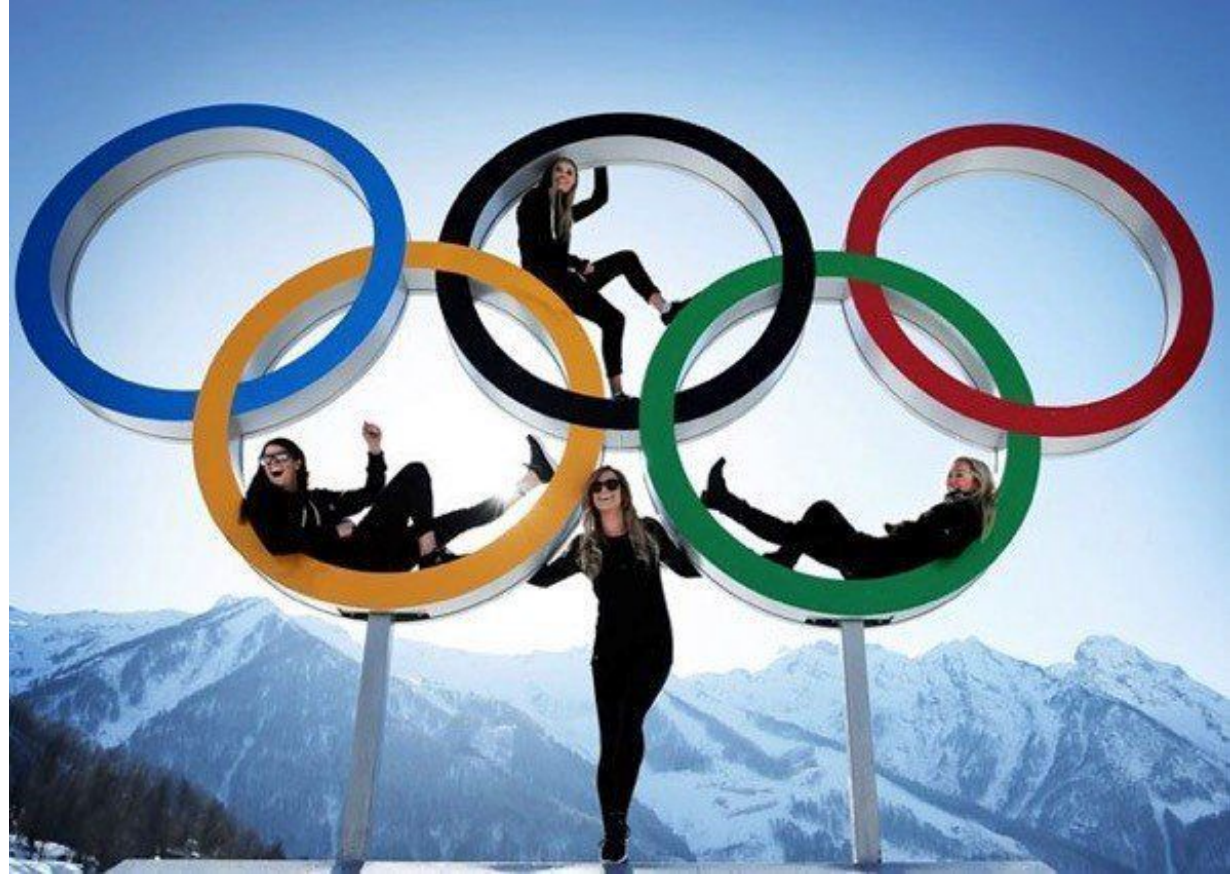
# Case Study

## Russian Winter Olympics

Remote Site Batching Plant – In the years 2011-2013, in the Adler Area of Sochi Region in Russia, an Olympic park of 200 hectares was built for the 2014 Winter Olympics.

Over 100,000 m<sup>3</sup> of concrete was required to build the Olympic park and sports venues.

The transport infrastructure prepared to support the Olympics included twelve tunnels, forty-six bridges, thirty-one miles of road, 223 miles of railroads and stations in and around Sochi, forty-two hotels, four sports venues and two training areas.



The complexity of the construction was determined by Sochi's location in the mountains where it was virtually impossible to deliver concrete, due to the high rise. A remote site batching plant was required.

The high rise made it impossible to place a modular or stationary concrete plant on the remote mountain areas, due to the compact location, the inaccessibility of preparing the foundation and the difficulties in transporting oversize parts.





## Denmark (Head Office)

Fibo Intercon A/S  
Herningvej 4  
6920 Videbæk  
Denmark  
CVR: 35841571  
Tel: +45 97 17 16 66

## International Sales

Contact: Bob Evans

Telephone: + 44 (0) 7896 246 224

WhatsApp: + 44 7896 246 224

Email: [bob@fibointercon.com](mailto:bob@fibointercon.com)



## International Dealer Network

Denmark

Norway

Sweden

Finland

Russia

Lithuania

Ukraine

Bulgaria

Poland

Switzerland

Germany

Holland

France

Spain

Portugal

United Kingdom

Ireland

Canada

United States

New Zealand

Philippines

South Africa

Ghana