

METALLIC

FLOORING SYSTEMS



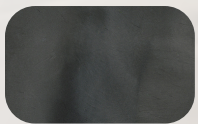
DESCRIPTION

Metallic floor coating systems offer the ultimate in flooring design and customization. They provide owners with a unique finish that generates striking color radiance & depth.

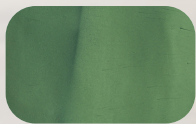
These applications suspend automotive-grade metallic pigments within high-performance, water-clear epoxy coatings that can be customized for any setting. A distinctive selection for commercial environments and retail showrooms, decorative metallic flooring offers a truly one-of-a-kind floor system that will compliment your brand and enhance your customer experience.

FEATURES AND BENEFITS:

- » Outstanding color range & depth
- » Durable, chemical resistant finish
- » Unlimited custom finishes tailored to any space
- » Suitable for interior heavy-traffic commercial settings
- » Adjustable traction to meet specific COF requirements
- » Available in gloss, semi-gloss and satin finishes



OBSIDIAN



EMERALD



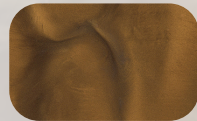
AZURE



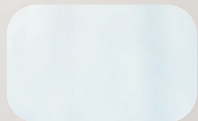
EMBER



SUNBEAM



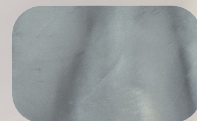
HICKORY



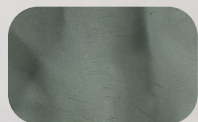
FROST



OAK



SMOKE



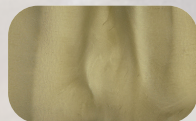
AGATE



POMEGRANATE



FLAG



MUSK



FLOORING DESIGN

In addition to the installation process, the lighting within the space itself plays a significant roll into the overall appearance of any metallic coating.

Metallic floor coating applications typically incorporate a pigmented primer to help provide a contrasting element to the selected metallic color. Following the primer, metallic pigments are suspended within a high-quality water-clear epoxy resin. Proper product selection is critical to allow for optimal flow and metallic effect.

Once applied, the metallic epoxy may be modified to create unique decorative features. Additional colors may also be introduced to help accent the floor. Once cured, the metallic epoxy coat is sanded and top-coated with one of our performance urethane topcoats. Available in a gloss or satin finish, urethane topcoats provide for a highly durable wear surface and improved traction.

APPLICATIONS:

- » Commercial & Retail
- » Restaurants
- » Schools & Universities
- » Residential Basements
- » Showrooms

SEAMLESS QUARTZ SYSTEMS

MT-100	Metallic epoxy flooring system that incorporates a penetrating, 100% solids vapor barrier epoxy primer. This is followed by a 100% solids pigmented intermediate coat, 100% solids cycloaliphatic water-clear metallic coat and high-traffic urethane finish.
MT-110	Metallic epoxy flooring system that incorporates a penetrating, water-based epoxy primer. This is followed by a 100% solids pigmented intermediate coat, 100% solids cycloaliphatic water-clear metallic coat and high-traffic urethane finish.
MT-120	Metallic epoxy flooring system that incorporates a 100% solids epoxy primer. This is followed by a 100% solids pigmented intermediate coat, 100% solids cycloaliphatic water-clear metallic coat and high-traffic urethane finish.
MT-130	Metallic epoxy flooring system that incorporates a penetrating, fast-cure water-based epoxy primer. This is followed by a 100% solids pigmented intermediate coat, 100% solids cycloaliphatic water-clear metallic coat and high-traffic urethane finish.
MT-140	Metallic epoxy system that utilizes a high-performance polyurethane concrete base coat followed by a pigmented second coat and metallic epoxy. The final application is then top-coated with a high-wear urethane.

