



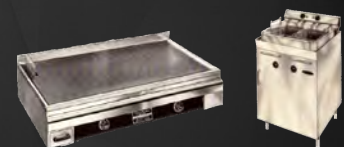
## 2021 PRODUCT GUIDE



**Griddles • Charbroilers • Hot Plates  
Fryers • Panini / Sandwich 2-Sided Grills  
Contact & Conveyor Toasters • Conveyor Ovens  
Tortilla Warmers • Drawer Warmers • Roller Grills  
Hot Dog & Concession Equipment • Waffle Makers**

Founded in 1921 in St. Louis, Missouri, Star has manufactured quality commercial foodservice equipment for 100 years!

We look forward to 100 more years of delivering innovative, high-performance equipment to our partners and friends in the foodservice industry.



# 2021 PRODUCT GUIDE



**Griddles • Charbroilers • Hot Plates  
Fryers • Panini / Sandwich 2-Sided Grills  
Contact & Conveyor Toasters • Conveyor Ovens  
Tortilla Warmers • Drawer Warmers • Roller Grills  
Hot Dog & Concession Equipment • Waffle Makers  
Heated Peristaltic Dispensers • Refrigerated Server**

## STAR, HOLMAN & TOASTMASTER

265 Hobson Street | Smithville, Tennessee 37166

### CUSTOMER SERVICE

phone: 800-264-7827 option 1

email: [orders@star-mfg.com](mailto:orders@star-mfg.com)

### TECHNICAL SERVICE

phone: 800-264-7827 option 2

email: [techservice@partstown.com](mailto:techservice@partstown.com)

[star-mfg.com](http://star-mfg.com)



facebook.com  
StarMfgInc



twitter.com  
StarMfg



youtube.com  
StarMfgVideos



linkedin.com  
star-manufacturing-international-inc



Instagram.com  
starmfg

**100**  
YEARS  
OF QUALITY  
— est. 1921 —  
**STAR**  
**1921 - 2021**







# TABLE OF CONTENTS 2021

## COUNTERTOP EQUIPMENT ..... pgs 6-22

|  |           |
|--|-----------|
| Griddle Buying Guide .....                       | pg 7      |
| Griddle Features Guide .....                     | pg 8      |
| Griddles, Star Ultra-Max .....                   | pg 9      |
| Griddles, Star Star-Max .....                    | pg 10     |
| Griddles, Toastmaster .....                      | pg 11     |
| Equipment Stands & Ultra-Max Plate Shelves ..... | pg 12     |
| Charbroiler Buying Guide .....                   | pg 13     |
| Charbroiler Features Guide .....                 | pg 14     |
| Charbroilers, Star Ultra-Max .....               | pg 15     |
| Charbroilers, Star Star-Max .....                | pg 16     |
| Charbroilers, Toastmaster .....                  | pg 17     |
| Hot Plates, Star Ultra-Max .....                 | pg 18     |
| Hot Plates, Star Star-Max .....                  | pg 19     |
| Hot Plates, Toastmaster .....                    | pg 20     |
| Fryers, Star Ultra-Max .....                     | pgs 21-22 |

## 2-SIDED SANDWICH/PANINI GRILLS ..... pgs 23-28

|   |               |
|---|---------------|
| Sandwich/Panini Grill Buying Guide .....  | pgs 24-25     |
| Sandwich Grills, Star Pro-Max .....       | pgs 26-27, 28 |
| Sandwich Grills, Star Grill-Express ..... | pg 27         |

## TOASTERS ..... pgs 29-35

|   |       |
|---|-------|
| Toasters Buying Guide .....                 | pg 30 |
| Vertical Contact Toaster, Holman .....      | pg 31 |
| Horizontal Contact Toasters, Holman .....   | pg 32 |
| Compact Conveyor Toasters, Holman .....     | pg 33 |
| High-Volume Conveyor Toasters, Holman ..... | pg 34 |
| Specialty Conveyor Toasters, Holman .....   | pg 35 |

## CONVEYOR OVENS ..... pgs 36-37

|  |       |
|--|-------|
| Impingement Conveyor Ovens, Star Ultra-Max ..... | pg 36 |
| Quartz Conveyor Ovens, Holman .....              | pg 37 |

## WARMERS ..... pgs 38-37

|                                   |       |
|-----------------------------------|-------|
| Tortilla Warmers, Star .....      | pg 38 |
| Drawer Warmers, Toastmaster ..... | pg 39 |

## HOT DOG EQUIPMENT ..... pgs 40-46

|  |           |
|--|-----------|
| Roller Grill Buying Guide .....              | pgs 41-42 |
| Roller Grills, Star Grill-Max .....          | pgs 43-44 |
| Bun Boxes, Sneeze Guards & Accessories ..... | pg 45     |
| Cradle Broil-O-Dog & Hot Dog Steamers .....  | pg 46     |

## Waffle Bakers - Traditional & Belgian, Star ..... pg 47

## Heated Peristaltic Dispensers, Star ..... pg 48

## Refrigerated Countertop Server, Star ..... pg 49

## FREIGHT INFO ..... pg 4

## MAP/M.R.I.C.P. POLICY ..... pgs 50-51

## WARRANTY ..... pgs 52-54

## STAR 100 CONTEST & ADDITIONAL INFO ..... pgs 55-56

# FREIGHT INFORMATION



## PREPAID FREIGHT

on orders of  
**\$10,000**  
or more total net\*

### Prepaid Freight offer will ONLY apply if:

1. Freight ships from Star warehouse location.
2. Star chooses freight carrier.
3. Star must pre-pay and add freight to invoice.

### Additional Charges

Lift Gate Delivery = \$125  
All other requests, call for pricing.

### Freight Classification

The bulk of Star commercial equipment is rated 85.

Special configurations or non-standard crating may add to the classification.

Rate classifications are subject to change without notice.

### Freight Rates for orders under \$10,000:

All UPS Ground shipments on Star account will be subjected to a shipping and handling fee.  
We encourage customers to ship on their UPS Ground account to avoid charges.

### Freight Damage:

**DO NOT SIGN** for equipment until you have thoroughly inspected it for obvious or concealed freight damage.  
Once signed for, the customer takes full responsibility for the shipment.



# STAR 100 CONTEST

**WHO HAS THE  
OLDEST PIECE OF  
STAR EQUIPMENT  
STILL IN USE?**



**We've launched a contest to find out...**

in honor of Star's 100<sup>th</sup> Birthday, we're holding a contest

the contest

**Find the oldest piece of Star equipment  
still in use at a foodservice operation**

the prize

**Enter to win  
\$1,921 + a trip to party in Nashville  
a tour of our Star plant  
January 2022**

\$1,921 + TRIP prize to  
**SUBMITTING  
DEALER**

\$1,921 + TRIP prize to  
**UNIT OPERATOR**

TRIP prize to associated  
**SALES REP**



how to enter

**ENTER TODAY** VISIT:  
**STAR-MFG.COM/100YEARS**

FOR FULL CONTEST RULES, GO TO  
**STAR-MFG.COM/100 YEARS**

the deadline

**submit info & photos by  
October 15, 2021**





# COUNTERTOP COOKING EQUIPMENT

GRIDDLES • CHARBROILERS • HOT PLATES • FRYERS

Star and Toastmaster griddles, charbroilers, hot plates, and fryers are designed to stand up to the demands of constant use, high-volume operations, and repeated heat-up and cool-down cycles.

## Fryers

Star Star-Max

## Hot Plates

Star Ultra-Max  
Star Star-Max  
Toastmaster

## Griddles

Star Ultra-Max  
Star Star-Max  
Toastmaster

## Charbroilers

Star Ultra-Max  
Star Star-Max  
Toastmaster







# GRIDDLES

## HEAVY-DUTY GRIDDLE BUYING GUIDE



STAR-MAX 624



ULTRA-MAX 860MA

### Star Ultra-Max Griddles

Plate thickness **1"**  
 Plate depth **24"**  
 Plate width **24-72"**  
 BTU/foot (gas) **30,000-40,000**  
 kW/foot (elec) **4.35**  
 Embedded **Yes**

Thermostat (gas) **Mechanical Snap-Action**  
 Thermostat (electric) **Electric Snap-Action**  
 Set temperature **+/-15°F**  
 Chrome option **Yes**



### Star Star-Max Griddles

Plate thickness **1"**  
 Plate depth **20 1/2"**  
 Plate width **15-48"**  
 BTU/foot (gas) **28,300**  
 kW/foot (elec) **3.0 (208V) 4.0 (240V)**  
 Embedded **Yes**

Thermostat **Modulating**  
 Thermostat (electric) **Electric Snap-Action**  
 Set temperature **+/-30°F**  
 Chrome option **Yes**



### Toastmaster Griddles

Plate thickness **3/4"**  
 Plate depth **20 1/2"**  
 Plate width **24-48"**  
 BTU/foot (gas) **20,000**  
 kW/foot (elec) **3.0 (208V) 4.0 (240V)**  
 Embedded **No**

Thermostat **Modulating**  
 Set temperature **+/-40°F**  
 Chrome option **No**



TM TMGM36

## GRIDDLE FEATURES

**1" & 3/4" THICK PLATES** Griddle plate thickness drives surface temperature, performance, and consistency. 1" thick griddle plates will retain more heat for faster recovery. 1" thick plates allow the thermostat probes to be mounted deep within the griddle plate, resulting in improved performance. Our heavy-duty 3/4" griddle plate models have bottom-mounted temperature probes

**PLATE DEPTH** Deeper griddle plates offer more cooking area and usable space. Balance specific production needs with size constraints in the kitchen. Different depths available on select model families



**CHROME SURFACE** In-addition to the exceptional mirror finish of chrome, our chrome plates don't require seasoning with oil, they clean up faster. Wait, there's more ... chrome notably reduces kitchen heat load, and chrome nearly eliminates flavor transfer!

**OPTIMAL PERFORMANCE + EASY CLEAN UP**

## GRIDDLE THERMOSTATS

### MECHANICAL SNAP-ACTION THERMOSTAT

MECHANICAL controls cycle the griddle burner completely ON-or-OFF as demanded by griddle surface temperature changes. Controls are heat, water and grease resistant, with no power required. Temperature control ranges from 150°F-550°F for embedded probes with a surface temperature control  $\pm 15^{\circ}\text{F}$  to set point



### ELECTRIC SNAP-ACTION THERMOSTAT

Electric powered controls cycle the burner completely ON-or-OFF as demanded by surface temperature changes. Temperature control ranges from 150°F-450°F for embedded probes with a surface temperature control  $\pm 15^{\circ}\text{F}$  to set point



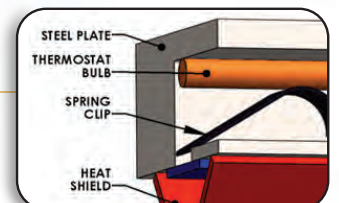
### MODULATING THERMOSTAT

MECHANICAL diaphragm and probe controls the burner. Controls are heat, water and grease resistant, and require no power. Temperature control ranges from 150°F-450°F for embedded probes with a surface temperature control  $\pm 30^{\circ}\text{F}$  to set point,  $\pm 40^{\circ}\text{F}$  for bottom mounted



### EMBEDDED THERMOSTAT

Embedded thermostat reacts more quickly to changes on the cooking surface providing better performance than probes on the bottom of the plate







# GRIDDLES



## ULTRA-MAX GRIDDLES

*UltraMax*



824MA



760TA



### STAR ULTRA-MAX GAS MANUAL & EMBEDDED SNAP-ACTION GRIDDLES

| MANUAL                          |  | MECHANICAL<br>Snap-Action<br>Thermostat  |   |         |                   |             |                  |              |                |               |
|---------------------------------|--|--|---|---------|-------------------|-------------|------------------|--------------|----------------|---------------|
| Series No.                      | Griddle Type: MA<br>Polished Steel Plate | Griddle Type: TA<br>Polished Steel Plate | Griddle Type: TCHSA<br>CHROME Plate                                     | BTU     | Plate Depth [in.] | Width [in.] | Unit Depth [in.] | Height [in.] | Ship Wt. [lb.] | Freight Class |
| 824                             | \$4,139                                  | \$5,466                                  | \$9,867   | 60,000  | 24                | 24          | 32.38            | 18.00        | 300            | 85            |
| 836                             | \$5,638                                  | \$7,315                                  | \$13,904  | 90,000  | 24                | 36          | 32.38            | 18.00        | 435            | 85            |
| 848                             | \$7,197                                  | \$9,117                                  | \$17,825  | 120,000 | 24                | 48          | 32.38            | 18.00        | 520            | 85            |
| 860                             | \$8,918                                  | \$11,506                                 | \$21,925  | 150,000 | 24                | 60          | 32.38            | 18.00        | 656            | 85            |
| 872                             | \$10,815                                 | \$15,039                                 | \$26,904  | 180,000 | 24                | 72          | 32.38            | 18.00        | 780            | 85            |
| All prices F.O.B Smithville, TN |  |  | Specify Natural Gas or Propane and Elevation requirements when ordering |         |                   |             |                  |              |                |               |

Ultra-Max Plate Shelf options on page 12  
Stand options on page 12

### STAR ULTRA-MAX ELECTRIC EMBEDDED SNAP-ACTION GRIDDLES

ELECTRIC  
Snap-Action Thermostat

| Series No.   | Griddle Type: TA<br>Polished Steel Plate | Griddle Type: TCHSA <sup>2</sup><br>Chrome Plate | Watts <sup>1</sup><br>208V or 240V | Plate Depth [in.] | Width [in.] | Unit Depth [in.] | Height [in.] | Ship Wt. [lb.] | Freight Class |
|--|--|--|------------------------------------|-------------------|-------------|------------------|--------------|----------------|---------------|
| 724  | \$5,978                                  | -  | 8,700                              | 24                | 24          | 33.69            | 18.00        | 220            | 85            |
| 736  | \$7,777                                  | \$14,170   | 13,050                             | 24                | 36          | 33.69            | 18.00        | 330            | 85            |
| 748  | \$10,161                                 | \$18,609   | 17,400                             | 24                | 48          | 33.69            | 18.00        | 440            | 85            |
| 760  | \$12,642                                 | \$22,750   | 21,750                             | 24                | 60          | 33.69            | 18.00        | 550            | 85            |
| 772  | \$16,401                                 | \$28,268   | 26,100                             | 24                | 72          | 33.69            | 18.00        | 660            | 85            |
| 1 - Specify 208V or 240V service. All units must be hard-wired at installation for 1-phase or 3- phase service |  |  |                                    |                   |             |                  |              |                |               |
| 2 - TCHSA models - chrome only available in 240V for the 760TCHSA & 772TCHSA                                   |  |  |                                    |                   |             |                  |              |                |               |

Ultra-Max Plate Shelf options on page 12  
Stand options on page 12

### MODEL NAME FORMULA

MODEL NAME =

Series No. + Griddle Type

| Series No. | Griddle Type: MA<br>Polished Steel Plate | Griddle Type: TA<br>Polished Steel Plate |
|------------|--|--|
| 824        | <b>824MA</b>                             | <b>824TA</b>                             |



# GRIDDLES



## STAR-MAX GRIDDLES



StarMax



636TF



615TF



### STAR-MAX MANUAL & EMBEDDED THERMOSTATIC GAS GRIDDLES

| MANUAL                          |  | EMBEDDED<br>Modulating Thermostat  |                                     | EMBEDDED Electric<br>Snap-Action Thermostat<br>w/ Pilot Safety | BTU <sup>1</sup> |
|---------------------------------|--|--|-------------------------------------|--|------------------|
| Series No.                      | Griddle Type: MF<br>Polished Steel Plate | Griddle Type: TF<br>Polished Steel Plate                                     | Griddle Type: TCHSF<br>CHROME Plate | Griddle Type: TSPF<br>Polished Steel Plate                     |                  |
| 615                             | \$1,805                                  | \$2,407  | -                                   | -  | 28,300           |
| 624                             | \$2,133                                  | \$3,447  | \$6,202                             | \$4,327  | 56,600           |
| 636                             | \$2,685                                  | \$4,398  | \$8,529                             | \$5,465  | 84,900           |
| 648                             | \$3,621                                  | \$5,707  | \$11,215                            | \$6,960  | 113,200          |
| All prices F.O.B Smithville, TN |  | 1 - All units ship for Natural Gas service. Propane conversion kits included |                                     |  |                  |

Stand options on page 12



### STAR-MAX SNAP-ACTION ELECTRIC GRIDDLES

| Series No.                          | Griddle Type: TGF<br>Polished Steel Plate | Griddle Type: CHSF<br>CHROME Plate   | Watts <sup>2</sup><br>208V/240V |
|-------------------------------------|---|--|---------------------------------|
| 515                                 | \$2,163                                   | -  | 3,000/4,000                     |
| 524                                 | \$2,959                                   | \$5,163  | 6,000/8,000                     |
| 536                                 | \$3,506                                   | \$6,812  | 9,000/12,000                    |
| 548                                 | \$4,896                                   | \$8,753  | 12,000/16,000                   |
| 2 - 208/240V service for all models |   | All units must be hard-wired at installation for 1-phase & 3-phase service |                                 |



524TGF



Stand options on page 12

### STAR-MAX GRIDDLE SPECIFICATIONS

| Series No. | Plate Depth [in.] | Width [in.] | Gas Unit Depth [in.] | Electric Unit Depth [in.] | Height [in.] | Ship Wt. [lb.] | Freight Class |
|------------|-------------------|-------------|----------------------|---------------------------|--------------|----------------|---------------|
| 615 / 515  | 20.5              | 15          | 29.00                | 27.88                     | 15.5         | 126            | 85            |
| 624 / 524  | 20.5              | 24          | 29.00                | 27.88                     | 15.5         | 186            | 85            |
| 636 / 536  | 20.5              | 36          | 29.00                | 27.88                     | 15.5         | 250            | 85            |

### MODEL NAME FORMULA

MODEL NAME =  
Series No. + Griddle Type

| Series No. | Griddle Type: TGF<br>Polished Steel Plate |
|------------|---|
| 515        | <b>515TGF</b>                             |
| 524        | <b>524TGF</b>                             |





# GRIDDLES



## TOASTMASTER GRIDDLES



TMGM36



### TOASTMASTER MANUAL & THERMOSTATIC GRIDDLES - GAS & ELECTRIC

| MANUAL GAS   |   | MODULATING GAS Thermostat               |                  | ELECTRIC Griddle w/ SNAP-ACTION Thermostat |                 |                   |             |                  |              |                |               |
|--|---|---|------------------|--|-----------------|-------------------|-------------|------------------|--------------|----------------|---------------|
| Series No.   | Griddle Type: TMGM Polished Steel Plate | Griddle Type: TMGT Polished Steel Plate | BTU <sup>1</sup> | Griddle Type: TMGE Polished Steel Plate    | Watts 208V/240V | Plate Depth [in.] | Width [in.] | Unit Depth [in.] | Height [in.] | Ship Wt. [lb.] | Freight Class |
| 24   | \$1,826                                 | \$2,235                                 | 40,000           | \$1,988                                    | 6,000/8,000     | 20.5              | 24          | 27.81            | 15.50        | 158            | 85            |
| 36   | \$2,263                                 | \$3,004                                 | 60,000           | \$2,659                                    | 9,000/12,000    | 20.5              | 36          | 27.81            | 15.50        | 236            | 85            |
| 48   | \$2,919                                 | \$3,915                                 | 80,000           | \$3,225                                    | 12,000/16,000   | 20.5              | 48          | 27.81            | 15.50        | 315            | 85            |
| All prices F.O.B Smithville, TN  |   |   |                  |  |                 |                   |             |                  |              |                |               |
| 1 - All gas units ship for Natural Gas service. Propane conversion kits included         |   |   |                  |  |                 |                   |             |                  |              |                |               |
| 2 - All 208/240V units must be hard-wired at installation for 1-phase or 3-phase service |   |   |                  |  |                 |                   |             |                  |              |                |               |

Stand options on page 12

### MODEL NAME FORMULA

**MODEL NAME** = Griddle Type + Series No.

| Series No. | Griddle Type: TMGM Polished Steel Plate | Griddle Type: TMGT Polished Steel Plate |
|------------|---|---|
| 24         | <b>TMGM24</b>                           | <b>TMGT24</b>                           |



TMGM24



## EQUIPMENT STANDS & ULTRA-MAX PLATE SHELVES

### HEAVY-DUTY EQUIPMENT STANDS with CASTERS

| Model No.  | Price F.O.B<br>Smithville, TN | Width<br>[in.] | Depth<br>[in.] | Height<br>[in.] | Ship<br>Wt. [lb.] | Freight<br>Class |
|------------|-------------------------------|----------------|----------------|-----------------|-------------------|------------------|
| STAND/C-24 | \$1,638                       | 24.00          | 30.00          | 24.00           | 51                | 85               |
| STAND/C-36 | \$1,835                       | 36.00          | 30.00          | 24.00           | 68                | 85               |
| STAND/C-48 | \$2,155                       | 48.00          | 30.00          | 24.00           | 88                | 85               |
| STAND/C-60 | \$2,518                       | 60.00          | 30.00          | 24.00           | 105               | 85               |
| STAND/C-72 | \$2,980                       | 72.00          | 30.00          | 24.00           | 122               | 85               |

### 7-INCH PLATE SHELF

for Ultra-Max Griddles/Charbroilers

| Unit<br>Size                    | Model No. | 7" Plate Shelf | Ship<br>Wt. [lb.] | Freight<br>Class |
|---------------------------------|-----------|----------------|-------------------|------------------|
| 24"                             | UMSA24    | \$243          | 6                 | 85               |
| 36"                             | UMSA36    | \$332          | 9                 | 85               |
| 48"                             | UMSA48    | \$417          | 12                | 85               |
| 60"                             | UMSA60    | \$571          | 13                | 85               |
| 72"                             | UMSA72    | \$664          | 16                | 85               |
| All prices F.O.B Smithville, TN |           |                |                   |                  |



## CHARBROILER BUYING GUIDE

### RADIANT & LAVA ROCK MODELS



ULTRA-MAX 8172RCBB

#### Star **Ultra-Max** Charbroilers Radiant & Lava Rock

Burner mat'l **Cast iron**  
Burners/foot **2**  
BTU/foot **40,000**  
Radiant mat'l **Steel alloy**  
Grate depth **24"**

Unit width options  
**24", 36", 48", 60", 72"**

7" Shelf accessory available  
for Ultra-Max charbroilers



ULTRA-MAX  
8024CBB

#### Star **Star-Max** Charbroilers Radiant & Lava Rock

Burner mat'l **Cast iron**  
Burners/foot **1**  
BTU/foot (gas) **40,000**  
kW/foot (elec) **3.3**  
Radiant mat'l **Stainless steel**  
Grate depth **19"**

Unit width options  
**15", 24", 36", 48"**



STAR-MAX 6136RCBF

#### Toastmaster **Charbroilers** Radiant & Lava Rock

Burner mat'l **Steel Tube**  
Burners/foot **1**  
BTU/foot **30,000**  
Radiant mat'l **Stainless steel**  
Grate depth **19"**

Unit width options  
**24", 36", 48"**



TM TMRC24

## CHARBROILER FEATURES

### STEEL TUBE BURNER

Tubular steel burners offer excellent and reliable performance at an economical price. Available in Toastmaster charbroilers, models have one (1) burner per 12"



### CAST IRON GRATES

All Star and Toastmaster charbroilers come with heavy-duty cast iron grates. Incline or lay flat to optimize your cooking surface



### CAST IRON BURNER

Cast Iron burners are ten times heavier & thicker than sheet metal burners, cast iron burners offer performance and durability in the most corrosive kitchen environments.

- One (1) burner per 12" for Star-Max models
- Two (2) burners per 12" for Ultra-Max models

### RADIANT STYLE

Charbroiler radiants protect the burners from debris and they ensure a more uniform temperature profile. Star-Max and Toastmaster heavy gage sheet metal radiants can last for years, and the uniquely durable Lang and Ultra-Max steel alloy radiants may last the life of your charbroiler



### LAVA ROCK

Lava rocks function as a radiant for the entire burner array and diffuse the heat generated by the burners effectively. Cooking surface temperature profiles can be modified by positioning the rock, and flavor profiles may vary depending on use



ULTRA-MAX 8148RCBB







# CHARBROILERS



## ULTRA-MAX CHARBROILERS



STAR ULTRA-MAX RADIANT & LAVA ROCK  
GAS CHARBROILERS

*UltraMax*



ULTRA-MAX 8148RCBB

| RADIANT<br>CHARBROILERS  |          | LAVA ROCK<br>CHARBROILERS |          | BTU <sup>1</sup>                                  | Grate<br>Depth<br>[in.] | Width<br>[in.] | Unit<br>Depth<br>[in.] | Height<br>[in.] | Ship<br>Wt. [lb.] | Freight<br>Class |
|--|----------|---------------------------|----------|---|-------------------------|----------------|------------------------|-----------------|-------------------|------------------|
| 8124RCBB   | \$5,572  | 8024CBB                   | \$5,851  | 80,000  | 24                      | 24             | 30.63                  | 18.00           | 260               | 85               |
| 8136RCBB   | \$7,574  | 8036CBB                   | \$7,953  | 120,000   | 24                      | 36             | 30.63                  | 18.00           | 350               | 85               |
| 8148RCBB   | \$9,733  | 8048CBB                   | \$10,219 | 160,000   | 24                      | 48             | 30.63                  | 18.00           | 438               | 85               |
| 8160RCBB   | \$12,162 | 8060CBB                   | \$12,770 | 200,000   | 24                      | 60             | 30.63                  | 18.00           | 543               | 85               |
| 8172RCBB   | \$13,527 | 8072CBB                   | \$14,203 | 240,000   | 24                      | 72             | 30.63                  | 18.00           | 665               | 85               |
| All prices F.O.B Smithville, TN  |          |                           |          | 1 - Specify Natural Gas or Propane when ordering. |                         |                |                        |                 |                   |                  |
| High elevation construction available at no charge. Specify when ordering. |          |                           |          |   |                         |                |                        |                 |                   |                  |

Ultra-Max Plate Shelf options on page 12  
Stand options on page 12



ULTRA-MAX 8136RCBB





# CHARBROILERS



## STAR-MAX CHARBROILERS



### STAR-MAX RADIANT & LAVA ROCK GAS CHARBROILERS



*StarMax*



STAR-MAX 6136RCBF

| RADIANT<br>CHARBROILERS         |         | LAVA ROCK<br>CHARBROILERS |         | BTU <sup>1</sup>   | Grate<br>Depth<br>[in.] | Width<br>[in.] | Depth<br>[in.] | Height<br>[in.] | Ship<br>Wt.<br>[lb.] | Freight<br>Class |
|---------------------------------|---------|---------------------------|---------|--|-------------------------|----------------|----------------|-----------------|----------------------|------------------|
| 6115RCBF                        | \$1,954 | 6015CBF                   | \$2,051 | 40,000   | 21                      | 15             | 25.75          | 15.50           | 121                  | 85               |
| 6124RCBF                        | \$2,233 | 6024CBF                   | \$2,345 | 80,000   | 21                      | 24             | 25.75          | 15.50           | 186                  | 85               |
| 6136RCBF                        | \$3,129 | 6036CBF                   | \$3,284 | 120,000  | 21                      | 36             | 25.75          | 15.50           | 290                  | 85               |
| 6148RCBF                        | \$4,319 | 6048CBF                   | \$4,535 | 160,000  | 21                      | 48             | 25.75          | 15.50           | 350                  | 85               |
| All prices F.O.B Smithville, TN |         |                           |         | 1 - All units ship for Natural Gas service. Propane conversion kits included |                         |                |                |                 |                      |                  |



### STAR-MAX RADIANT ELECTRIC CHARBROILERS



STAR-MAX 5124CF

| Model                    | Prices F.O.B<br>Smithville, TN | Volts      | Watts <sup>2</sup> | Grate<br>Depth<br>[in.]   | Width<br>[in.] | Depth<br>[in.] | Height<br>[in.] | Ship<br>Wt.<br>[lb.] | Freight<br>Class |
|--------------------------|--------------------------------|------------|--------------------|---|----------------|----------------|-----------------|----------------------|------------------|
| 5124CF                   | \$4,715                        | 208<br>240 | 6,600              | 21  | 24             | 25.63          | 14.25           | 129                  | 85               |
| 5136CF                   | \$6,253                        | 208<br>240 | 9,900              | 21  | 36             | 25.63          | 14.25           | 186                  | 85               |
| 2 - Specify 208V or 240V |                                |            |                    | All units must be hard-wired at installation 1-phase or 3-phase service |                |                |                 |                      |                  |

[Stand options on page 12](#)



# CHARBROILERS



## TOASTMASTER CHARBROILERS



### TOASTMASTER RADIANT & LAVA ROCK GAS CHARBROILERS



TM TMLC36

| RADIANT<br>CHARBROILERS         |         | LAVA ROCK<br>CHARBROILERS |         | BTU <sup>1</sup>   | Grate<br>Depth<br>[in.] | Width<br>[in.] | Depth<br>[in.] | Height<br>[in.] | Ship<br>Wt.<br>[lb.] | Freight<br>Class |
|---------------------------------|---------|---------------------------|---------|--|-------------------------|----------------|----------------|-----------------|----------------------|------------------|
| TMRC24                          | \$1,867 | TMLC24                    | \$1,960 | 60,000   | 21                      | 24             | 25.75          | 15.50           | 186                  | 85               |
| TMRC36                          | \$2,425 | TMLC36                    | \$2,650 | 90,000   | 21                      | 36             | 25.75          | 15.50           | 290                  | 85               |
| TMRC48                          | \$3,060 | TMLC48                    | \$3,371 | 120,000  | 21                      | 48             | 25.75          | 15.50           | 350                  | 85               |
| All prices F.O.B Smithville, TN |         |                           |         | 1 - All units ship for Natural Gas service. Propane conversion kits included |                         |                |                |                 |                      |                  |

[Stand options on page 12](#)



TM TMRC24



TM TMLC48



## ULTRA-MAX HOT PLATES



### STAR ULTRA-MAX GAS HOT PLATES



*UltraMax*



804HA



806HA

Ultra-Max Hot Plates feature 30,000 BTU cast iron burners and heavy-duty cast iron grates

| Model No. | Price F.O.B Smithville, TN | No. Burners | BTU <sup>1</sup> | Width [in.] | Depth [in.] | Height [in.] | Ship Wt. [lb.] | Freight Class |
|-----------|----------------------------|-------------|------------------|-------------|-------------|--------------|----------------|---------------|
| 802HA     | \$2,099                    | 2           | 60,000           | 12          | 30.63       | 14.88        | 108            | 85            |
| 804HA     | \$3,126                    | 4           | 120,000          | 24          | 30.63       | 14.88        | 194            | 85            |
| 806HA     | \$4,120                    | 6           | 180,000          | 36          | 30.63       | 14.88        | 219            | 85            |
| 808HA     | \$5,242                    | 8           | 240,000          | 48          | 30.63       | 14.88        | 283            | 85            |

1 - Specify Natural Gas or Propane and Elevation requirements when ordering. No extra charge.

Ultra-Max Plate Shelf options on page 12  
Stand options on page 12



802HA



806HA





# HOT PLATES



## STAR-MAX HOT PLATES



*StarMax*



### STAR-MAX GAS HOT PLATES



STAR-MAX 602HF



STAR-MAX 602HWF



STAR-MAX 604HF

| Model No.  | Price F.O.B. Smithville, TN | No. Burners | BTU <sup>1</sup> | Width [in.] | Depth [in.]                                     | Height [in.] | Ship Wt. [lb.] | Freight Class |
|--|-----------------------------|-------------|------------------|-------------|---|--------------|----------------|---------------|
| 602HF  | \$1,509                     | 2           | 50,000           | 12.19       | 28.88   | 11.94        | 75             | 85            |
| 604HF  | \$2,340                     | 4           | 100,000          | 24.19       | 28.88   | 11.94        | 125            | 85            |
| 606HF  | \$3,250                     | 6           | 150,000          | 36.19       | 28.88   | 11.94        | 200            | 85            |
| SIDE-BY-SIDE GAS HOTPLATE  |                             |             |                  |             |   |              |                |               |
| 602HWF   | \$1,509                     | 6           | 50,000           | 24.19       | 17.00   | 11.94        | 75             | 85            |
| All units ship for natural gas service. Propane conversion kits included |                             |             |                  |             | * Stockpot in LP service operates at 90,000 BTU |              |                |               |

Stand options on page 12



### STAR-MAX ELECTRIC HOT PLATES - SOLID FRENCH TOP

| Model No.   | Price F.O.B. Smithville, TN | No. Burners | Watts <sup>1</sup> 208/240V | Width [in.] | Depth [in.] | Height [in.] | Ship Wt. [lb.] | Freight Class |
|---|-----------------------------|-------------|-----------------------------|-------------|-------------|--------------|----------------|---------------|
| 501FF   | \$1,119                     | 1           | 1,950/2,600                 | 12.00       | 17.25       | 10.28        | 25             | 85            |
| 502FF   | \$1,582                     | 2           | 3,900/5,200                 | 12.00       | 28.00       | 11.68        | 45             | 85            |
| 1 - All units are built for 208/240 volt, 1-phase service |                             |             |                             |             |             |              |                |               |



STAR-MAX 502FF



STAR-MAX 501FF



# HOT PLATES



## TOASTMASTER HOT PLATES



### TOASTMASTER GAS HOT PLATES



TMHP2

TMHP4

| Model No. | Price F.O.B.<br>Smithville, TN | No.<br>Burners | BTU <sup>1</sup> | Width<br>[in.] | Depth<br>[in.] | Height<br>[in.] | Ship Wt.<br>[lb.] | Freight<br>Class |
|-----------|--------------------------------|----------------|------------------|----------------|----------------|-----------------|-------------------|------------------|
| TMHP2     | \$1,443                        | 2              | 44,000           | 12.19          | 28.88          | 11.94           | 75                | 85               |
| TMHP4     | \$2,153                        | 4              | 88,000           | 24.19          | 28.88          | 11.94           | 125               | 85               |
| TMHP6     | \$3,316                        | 6              | 132,000          | 36.19          | 28.88          | 11.94           | 200               | 85               |

1 - All units ship for Natural Gas service. Propane conversion kits included

[Stand options on page 12](#)



### TOASTMASTER ELECTRIC HOT PLATES - SOLID FRENCH TOP

| Model No. | Price F.O.B.<br>Smithville, TN | No.<br>Burners | Watts <sup>1</sup><br>208/240V | Width<br>[in.] | Depth<br>[in.] | Height<br>[in.] | Ship<br>Wt. [lb.] | Freight<br>Class |
|-----------|--------------------------------|----------------|--------------------------------|----------------|----------------|-----------------|-------------------|------------------|
| TMHPF     | \$1,531                        | 2              | 3,900/5,200                    | 12.19          | 28.88          | 11.94           | 45                | 85               |

1 - All units are built for 208/240 volt, 1-phase service



TMHPF





# FRYERS



## STAR-MAX FRYERS



### STAR-MAX GAS FRYERS



615FF



630FF

| Model No.                                    | Price F.O.B. Smithville, TN | Oil Capacity [lb.] | Fries per hour [lb.] | BTU <sup>2</sup> | Description                                    | Width [in.] | Depth [in.] | Height [in.] | Ship Wt. [lb.] | Freight Class |
|--|-----------------------------|--------------------|----------------------|------------------|--|-------------|-------------|--------------|----------------|---------------|
| 615FF  | \$4,223                     | 15                 | 28                   | 30,000           | UNDER FIRED TWIN BASKETS                       | 12.00       | 25.13       | 24.63        | 74             | 85            |
| 630FF  | \$5,195                     | 30                 | 68                   | 70,000           | UNDER FIRED FULL BASKETS                       | 24.00       | 25.13       | 24.63        | 140            | 85            |
| Specify Natural Gas or Propane when ordering |                             |                    |                      |                  | 2 - 630FF in LP service operates at 65,000 BTU |             |             |              |                |               |

Fryer accessories on next page (pg. 22)

Stand options on page 12



### STAR-MAX ELECTRIC FRYERS

| Model No.                | Price F.O.B. Smithville, TN | Oil Capacity [lb.] | Fries per hour [lb.] | Volts <sup>1</sup> | Watts        | NEMA Plug   | Width [in.] | Depth [in.] | Height [in.] | Ship Wt. [lb.] | Freight Class |
|--------------------------|-----------------------------|--------------------|----------------------|--------------------|--------------|-------------|-------------|-------------|--------------|----------------|---------------|
| SINGLE POT, TWIN BASKETS |                             |                    |                      |                    |              |             |             |             |              |                |               |
| 514LL                    | \$1,713                     | 14                 | 15                   | 120                | 1,800        | 5-15P       | 11.00       | 21.88       | 13.25        | 34             | 85            |
| 301HLF                   | \$2,435                     | 15                 | 28                   | 208/240            | 4,130/5,300  | 6-30P       | 18.00       | 20.00       | 17.00        | 50             | 85            |
| 515F                     | \$2,302                     | 15                 | 32                   | 208/240            | 4,319/5,750  | 6-30P       | 12.00       | 24.00       | 16.75        | 47             | 85            |
| 530FF                    | \$3,930                     | 30                 | 65                   | 208/240            | 8,460/11,500 | Field Wired | 24.00       | 24.00       | 16.50        | 80             | 85            |
| TWIN POT, SINGLE BASKET  |                             |                    |                      |                    |              |             |             |             |              |                |               |
| 530TF                    | \$4,023                     | 30                 | 64                   | 208/240            | 8,638/11,500 | Field Wired | 24.00       | 24.00       | 16.75        | 80             | 85            |

Fryer accessories on next page (pg. 22)



301HLF



530FF



530TF





## STAR-MAX FRYERS

### STAR-MAX FRYER ACCESSORIES

| Model No. | Price F.O.B<br>Smithville, TN | Description   | Ship Wt. [lb.] | Freight Class |
|-----------|-------------------------------|---|----------------|---------------|
| 514FB     | \$109                         | BASKET for 514LL  | 4              | 85            |
| 301TBL    | \$194                         | TWIN BASKET (Left Hand) for 301HLF                      | 4              | 85            |
| 301TBR    | \$194                         | TWIN BASKET (Right Hand) for 301HLF                     | 4              | 85            |
| 530TBL    | \$245                         | TWIN BASKET (Left Hand) for 515F, 530TF & 615FF         | 4              | 85            |
| 530TBR    | \$245                         | TWIN BASKET (Right Hand) for 515F, 530TF & 615FF        | 4              | 85            |
| 216FBL    | \$309                         | FULL BASKET (Left Hand) for 515F, 530FF, 530TF & 630FF  | 7              | 85            |
| 216FBR    | \$309                         | FULL BASKET (Right Hand) for 515F, 530FF, 530TF & 630FF | 7              | 85            |





# 2-SIDED GRILLS PANINI SANDWICH

GROOVED & SMOOTH OPTIONS  
ALUMINUM & CAST IRON PLATENS

## THE HOTTEST 2-SIDED GRILL IN THE INDUSTRY

Star Panini Sandwich grills feature more production per hour than any other grill due to faster heat recovery.

Star Sandwich grills unique “ANYWHERE COOKING TECHNOLOGY” boasts even temperatures across the grill.

This innovative feature means consistent, full-surface heat allowing you to cook anywhere on the grill surface for maximum performance and output

**GREAT RECIPES,  
VIDEOS & MORE!**  
**STAR-MFG.COM**



click for  
Pro-Max  
recipes



[star-mfg.com/product/pro-max-panini-grills-with-torsion-spring-hinge/](http://star-mfg.com/product/pro-max-panini-grills-with-torsion-spring-hinge/)

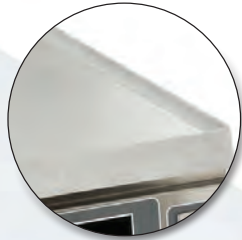




# SANDWICH/PANINI GRILLS

## SANDWICH/PANINI GRILL BUYING GUIDE

### PLATENS



### ALUMINUM **vs.** CAST IRON

#### ALUMINUM & CAST IRON **WILL PERFORM DIFFERENTLY**

- Aluminum will distribute heat more evenly, but lose heat faster and require more cycling
- Cast Iron requires more power to heat (due to higher density), but can retain temperature better for faster recovery in appropriate applications
- Both materials clean about the same, and though all iron products can rust, simple oiling and seasoning will prevent



#### CRITERIA THAT FAVOR ALUMINUM

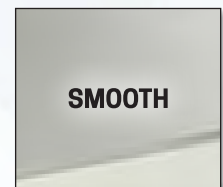
- Warming (tortillas, quesadillas, mild re-therm)
- Heating/Marking Bread products
- Low power available (120V, 1700W maximum)
- Split-Top (Aluminum only)

#### CRITERIA THAT FAVOR CAST IRON

- Cooking applications (chicken, burgers etc...)
- Hybrid uses (protein breakfasts, quesadilla lunches)
- High power available (208/240V, up to 7200W)
- 28" unit (Cast Iron only)

### GROOVED **vs.** SMOOTH

- A menu decision based on the look/feel of the finished product
- 'Panini' sandwiches are marked with grooves, by definition
- Less surface contact from grooves may increase cook times



**Alternative:** Smooth Bottom, Grooved Top - the best of both worlds!

## FLAT LANDING for OPTIMAL HEATING

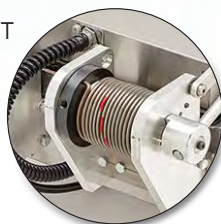
### 3-INCH 'FLAT LANDING' OPENING for LARGE SANDWICHES (PST models only)

- Perfect contact front-to-back for optimal heating
- Prevents contents from being squeezed out

## HINGE TYPES

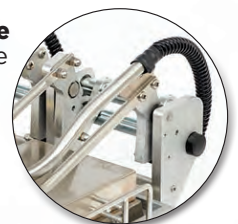
Our exclusive **Torsion Spring Hinge** STAYS PUT at whatever position you leave it, and has been tested to over 4 MILLION cycles, so you can count on it day-after-day, year-after-year!

**TORSION  
SPRING  
HINGE**



Our **Counter-Balance Hinge**  
The Counter-Balance Hinge mechanism is constructed from hardened aluminum

**COUNTER  
BALANCE  
HINGE**







## SANDWICH/PANINI GRILL BUYING GUIDE

### SIZE OPTIONS

| Size                  | 7-in Series      | 14-in Series                          | 28-in Series     |
|-----------------------|------------------|---------------------------------------|------------------|
| Cooking Surface [in.] | 7.5 x 14.2       | 14.5 x 14.2                           | 28.3 x 14.2      |
| Footprint Dims [in.]  | 10.38 x 23.30    | 16.50 x 23.30                         | 34.30 x 23.30    |
| Platens               | Single 7" Platen | Single 14" Platens or Dual 7" Platens | Dual 14" Platens |

### SANDWICH GRILL SIZE SELECTION

- Available counter-space may decide for you!
- Size of the cooked product is most important
- Standard tortillas come in 6"-14" diameters
- Bread/sandwich and protein batch sizes should be considered



### SPLIT TOP OPTION

- **Flexible** - split top option is great for varied menus and high volume applications
- **Independent electronic controls** and timers for each individual platen with convenient side-bar handles

### CONTROL OPTIONS



#### ANALOG

Dial thermostat, 1-10, for simplicity and operations with limited functional needs



#### ANALOG with TIMER

For more dynamic menus or busier locations where operators can get distracted



#### ELECTRONIC

Programmable for dozens of product time and temperature settings  
For high-volume operations with varied menus  
Easier to train operators, ensuring consistent results

### CLEANING TIPS



Aluminum and Cast Iron surfaces are porous. Carbon and oils can penetrate and discolor the surface while creating unwanted carbon and grease accumulation.

**Cleaning your sandwich grill effectively requires soapy water, a brush, and an abrasive pad.** When just soapy water isn't doing the trick, you can use commercial high-temperature grill cleaner. Grill cleaner is effective, especially when dealing with heavy accumulation.



# SANDWICH/PANINI GRILLS



## PRO-MAX 2-SIDED GRILLS

**STAR PRO-MAX PANINI SANDWICH GRILLS**  
with TORSION SPRING HINGE



PST71



PGT14

| ANALOG Control<br>NO TIMER  |                   |                 | ANALOG Control<br>ELECTRONIC TIMER |                  | ELECTRONIC<br>Control and TIMER                           |                  |                                  |
|---|-------------------|-----------------|------------------------------------|------------------|---|------------------|----------------------------------|
| Series<br>No.   | Type:<br>Aluminum | Type: I<br>Iron | Type: T<br>Aluminum                | Type: IT<br>Iron | Type: E<br>Aluminum                                       | Type: IE<br>Iron | Type: D<br>Aluminum<br>Split-Top |
| SMOOTH PANINI GRILLS  |                   |                 |                                    |                  |   |                  |                                  |
| PST7  | \$2,869           | \$4,166         | -                                  | -                | \$3,749   | \$5,205          | -                                |
| PST14   | \$2,893           | \$4,189         | \$3,448                            | \$4,713          | \$3,773   | \$5,226          | \$6,903                          |
| GROOVED PANINI GRILLS   |                   |                 |                                    |                  |   |                  |                                  |
| PGT7  | \$2,869           | \$4,166         | -                                  | -                | \$3,749   | \$5,205          | -                                |
| PGT14   | \$2,893           | \$4,189         | \$3,448                            | \$4,713          | \$3,773   | \$5,226          | \$6,903                          |
| GROOVED TOP, SMOOTH BOTTOM PANINI GRILLS  |                   |                 |                                    |                  |   |                  |                                  |
| Series No.  |                   | Type: IGT       |                                    | Type: ITGT       | All prices F.O.B Smithville, TN                           |                  |                                  |
| PST14   | -                 | \$4,189         | -                                  | \$4,713          | See page 28 for a list of<br>VOLTAGES AVAILABLE per model |                  |                                  |
| 230V available for some models - Add \$97 to list price & specify when ordering |                   |                 |                                    |                  |   |                  |                                  |

**STAR PRO-MAX PANINI SANDWICH GRILLS**  
with COUNTER-BALANCE HINGE

| ANALOG Control<br>NO TIMER                      |                | ANALOG Control<br>ELECTRONIC TIMER                     | ELECTRONIC<br>Control and TIMER |
|---|----------------|--|---------------------------------|
| Series No.                                      | Type: I - Iron | Type: IT - Iron  | Type: IE - Iron                 |
| <b>SMOOTH PANINI GRILLS</b>                     |                |  |                                 |
| PSC28   | \$7,945        | \$8,731  | \$9,500                         |
| <b>GROOVED PANINI GRILLS</b>                    |                |  |                                 |
| PGC28   | \$7,945        | \$8,731  | \$9,500                         |
| <b>GROOVED TOP, SMOOTH BOTTOM PANINI GRILLS</b> |                |  |                                 |
| Series No.                                      | Type: IGT      | Type: ITGT   | Type: IEGT                      |
| PSC28   | \$7,945        | \$8,731  | \$9,500                         |
| All prices F.O.B Smithville, TN                 |                | See page 28 for a list of VOLTAGES AVAILABLE per model |                                 |



PSC28I





# SANDWICH/PANINI GRILLS



PST14

## PRO-MAX 2-SIDED GRILLS

### STAR PRO-MAX SPECIFICATIONS

| Series Size                | Volts <sup>1</sup>   | Watts  | NEMA Plug  | Width [in.] | Depth [in.] | Height [in.]                 | Ship Wt. [lb.]          | Freight Class |
|----------------------------|--|--|--|-------------|-------------|------------------------------|-------------------------|---------------|
| 7-inch                     | 120<br>230*<br>240   | 1310<br>1425   | 5-15P<br>CEE7/7<br>6-15P                                   | 10.38       | 23.30       | 26.6 - open<br>10.0 - closed | 55 (alum)<br>69 (iron)  | 85            |
| 14-inch SINGLE             | 120<br>120 (CSA)<br>230 (alum)*<br>230 (iron)*<br>208/240 (alum)<br>208/240 (iron) | 1,800<br>1,800 (CSA)<br>1650<br>3306<br>1,350/1,800<br>2,700/3,600 | 5-15P<br>5-20P (CSA)<br>CEE7/7<br>CEE7/7<br>6-15P<br>6-20P | 16.50       | 23.30       | 26.6 - open<br>10.0 - closed | 75 (alum)<br>109 (iron) | 85            |
| 14-inch SPLIT-TOP ALUMINUM | 120<br>120 (CSA)<br>230*<br>208/240  | 2,300<br>2,300 (CSA)<br>2,112<br>1,728/2,300                       | 5-20P<br>5-30P (CSA)<br>CEE7/7<br>6-15P                    | 16.50       | 23.30       | 26.6 - open<br>10.0 - closed | 75 (alum)<br>109 (iron) | 85            |
| 28-inch IRON               | 208/240<br>208/240 (CSA)   | 5,400/7,200<br>5,400/7,200 (CSA)                                   | 6-30P<br>6-50P (CSA)                                       | 34.25       | 23.30       | 26.6 - open<br>10.0 - closed | 206 (iron)              | 85            |

1 - Specify 120V, 208/240V or 230V and Canadian applications when ordering. Not all voltages available on all models.  
See page 28 for a list of voltages by model

230V Options available for some PST/PGT models - SPECIFY 230V when ordering



## GRILL-EXPRESS 2-SIDED GRILLS



GX10IG

GX20IG

### STAR GRILL EXPRESS PANINI SANDWICH GRILLS

| Series No. | Type: IS Smooth Iron | Type: IG Grooved Iron | Type: IGS Grooved LEFT Smooth RIGHT | Surface [in.] | Volts   | Watts       | NEMA Plug | Width [in.] | Depth [in.] | Height [in.]                 | Ship Wt. [lb.] | Freight Class |
|------------|----------------------|-----------------------|-------------------------------------|---------------|---------|-------------|-----------|-------------|-------------|------------------------------|----------------|---------------|
| GX10       | \$1,256              | \$1,256               | -                                   | 10x10         | 120     | 1,350       | 5-15P     | 15.75       | 19.88       | 21.4 - open<br>10.9 - closed | 65             | 85            |
| GX10       | -                    | \$1,348               | -                                   | 10x10         | 208/240 | 1,800       | 6-15P     | 15.75       | 19.88       | 21.4 - open<br>10.9 - closed | 65             | 85            |
| GX14       | \$1,448              | \$1,448               | -                                   | 14x10         | 120     | 1,800       | 5-15P     | 19.63       | 23.30       | 21.4 - open<br>10.9 - closed | 74             | 85            |
| GX14       | \$1,750              | \$1,750               | -                                   | 14x10         | 208/240 | 2,100/2,800 | 6-15P     | 19.63       | 23.30       | 21.4 - open<br>10.9 - closed | 74             | 85            |
| GX20       | \$2,880              | \$2,880               | \$2,880                             | Dual 10x10    | 208/240 | 2,700/3,600 | 6-20P     | 34.25       | 23.30       | 21.4 - open<br>10.9 - closed | 115            | 85            |

All prices F.O.B Smithville, TN





# SANDWICH/PANINI GRILLS



## PRO-MAX 2-SIDED GRILL - VOLTAGES

STAR PRO-MAX PANINI SANDWICH GRILL  
VOLTAGES AVAILABLE (listed by model)

| Series No. | Type: Aluminum                  | Type: I Iron             | Type: T Aluminum | Type: IT Iron          | Type: E Aluminum                | Type: IE Iron          | Type: D Alum Split-Top          |
|------------|---------------------------------|--------------------------|------------------|------------------------|---------------------------------|------------------------|---------------------------------|
| PST7       | 120V, 230V*                     | 208/240V, 230V*          | -                | -                      | 208/240V                        | 208/240V, 230V*        | -                               |
| PST14      | 120V, 120(CSA), 208/240V, 230V* |                          | 120V, 230V*      | 208/240V               | 120V, 208/240V, 230V*           | 120V, 208/240V         | 120V, 120(CSA), 208/240V, 230V* |
| PGT7       | 120V                            | 120V, 230V*              | -                | -                      | 120V, 208/240V                  | 208/240V, 230V*        | -                               |
| PGT14      | 120V, 120(CSA), 208/240V        | 120V, 120(CSA), 208/240V | 120V, 240V       | 208/240V, 230V*        | 120V, 120(CSA), 208/240V, 230V* | 120V, 240V, 230V*      | 120V, 208/240V, 230V*           |
| PSC28      | -                               | 208/240V, 208/240(CSA)   | -                | 208/240V, 208/240(CSA) | -                               | 208/240V               | -                               |
| PGC28      | -                               | 208/240V, 208/240(CSA)   | -                | 208/240V, 208/240(CSA) | -                               | 208/240V, 208/240(CSA) | -                               |
| Series No. | Type: IGT                       |                          | Type: ITGT       |                        | Type: IEGT                      |                        |                                 |
| PST14      | -                               | 120V, 120(CSA), 208/240V | -                | 208/240V               | -                               | 208/240V               |                                 |
| PSC28      | -                               | 208/240V, 208/240(CSA)   | -                | 208/240V               | -                               | 208/240V               |                                 |



# TOASTERS HIGH-PERFORMANCE

## CONTACT & CONVEYOR MODELS

Built to stand up to the most rigorous foodservice operations

Fast, consistent heating that meets your toasting needs  
on demand with our wide variety of toasting options

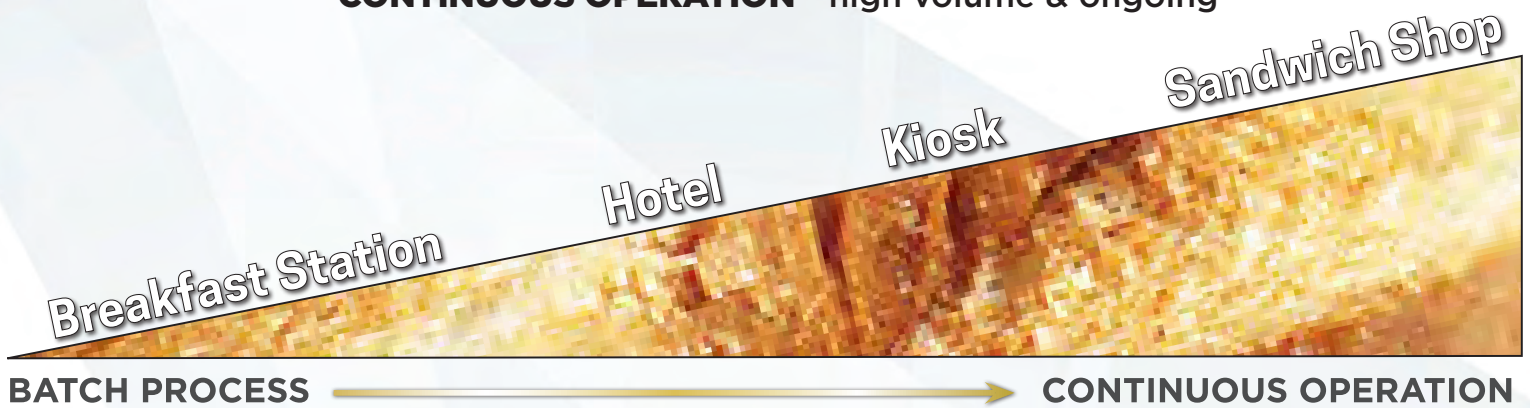


QCS3-1600B

# TOASTERS BUYING GUIDE

## HOW WILL YOU USE YOUR TOASTER?

- **BATCH PROCESS** - low volume & irregular
- **CONTINUOUS OPERATION** - high volume & ongoing



## WHAT ARE YOU TOASTING?

| <i><b>OPENING SIZE PER PRODUCT</b></i> |                        |                     |
|--|------------------------|---------------------|
| <b>BREAD</b><br>1.5"                   | <b>BAGELS</b><br>1.75" | <b>BUNS</b><br>3.0" |

Buns, bagels, and breads **all have varying heights**

Consider the height of your product when selecting the right toaster style





## SCT4000E VERTICAL CONTACT TOASTER

- First buns pass-through time is as low as 12 seconds fully caramelized
- Bun height adjustment controlled with an easily adjusted twist knob
- Supplied with an easy-to-install non-stick sheet
- Single piece front and rear silicone belts
- High-contrast display allows an infinite number of programmed product settings
- USB port programming allows easy uploading of new product files consistently, across any number of toasters

CAPABLE OF UP TO  
**4000**  
BUN-HALVES  
PER HOUR

two heels & two crowns  
at once, constant feed



SCT4000E

### HOLMAN SCT4000E VERTICAL CONTACT TOASTER

| Model No. | Prices F.O.B. Smithville, TN | Description  | CAPACITY BUNS per HOUR | Volts <sup>1</sup> | NEMA Plug    | Watts             | Width [in.] | Depth [in.] | Height [in.] | Ship Wt. [lb.] | Freight Class |
|-----------|------------------------------|--|------------------------|--------------------|--------------|-------------------|-------------|-------------|--------------|----------------|---------------|
| SCT4000E  | \$10,918                     | PROGRAMMABLE CONTROLS<br>VARIABLE SPEED & TEMPERATURE CONTROL, DIGITAL STEPPER MOTOR | 4,000 buns             | 208/240 230        | 6-15P CEE7/7 | 2,000/2,663 2,446 | 21.70       | 9.50        | 25.70        | 100            | 85            |

### ACCESSORIES

| Model No.  | List    | Description  |
|------------|---------|--|
| SCTBWP     | \$1,229 | PERFORATED BUTTER WHEEL for SCT                    |
| SCTBWS     | \$884   | SMOOTH BUTTER WHEEL for SCT                        |
| SCTSHEET-B | \$591   | (10) NON-STICK SHEETS for SCT, BUTTER APPLICATIONS |



## HCT HORIZONTAL CONTACT TOASTERS

- Caramelize/seal buns & bread to extend holding time
- Durable Chain or non-marking Silicone belt options
- Analog and Electronic Control Options
- Knob adjustment for product height
- Low-profile design



### HOLMAN HCT HORIZONTAL CONTACT TOASTERS

| ANALOG Controls  |               |                             | ELECTRONIC Controls |               |                             |
|------------------|---------------|-----------------------------|---------------------|---------------|-----------------------------|
| METAL CHAIN BELT | SILICONE BELT | Prices F.O.B Smithville, TN | METAL CHAIN BELT    | SILICONE BELT | Prices F.O.B Smithville, TN |
| HCT13M           | HCT13S        | \$5,170                     | HCTE13M             | HCTE13S       | \$5,720                     |

### SPECIFICATIONS - HCT CONTACT TOASTERS

| Model             | BUN HALVES per HOUR | Volts <sup>1</sup> | NEMA Plug | Watts | Width [in.] | Depth [in.] | Height [in.] | Ship Wt. [lb.] | Freight Class |
|-------------------|---------------------|--------------------|-----------|-------|-------------|-------------|--------------|----------------|---------------|
| HCT13M<br>HCTE13M | 1700                | 208                | 6-20P     | 2800  | 19.25       | 24.40       | 17.30        | 115            | 85            |
|                   |                     | 240                | 6-20P     | 3000  |             |             |              |                |               |
|                   |                     | 230                | CEE7/7    | 2750  |             |             |              |                |               |
| HCT13S<br>HCTE13S | 1700                | 208                | 6-20P     | 2550  | 19.25       | 24.40       | 17.30        | 115            | 85            |
|                   |                     | 240                | 6-20P     | 2650  |             |             |              |                |               |
|                   |                     | 230                | CEE7/7    | 2450  |             |             |              |                |               |

1 - 230V is not available on HCTE13M & HCTE13S models.

### ACCESSORIES

| Model No. | List  | Description                   |
|-----------|-------|-------------------------------|
| HCTEBW    | \$632 | BUTTER WHEEL for HCT          |
| HCTFEED   | \$187 | FEEDER TRAY for HCT           |
| CTSHEET10 | \$173 | (10) NON-STICK SHEETS for HCT |



## HOLMAN QCS1 COMPACT CONVEYOR TOASTERS



### ⚡ HOLMAN QCS1 COMPACT CONVEYOR TOASTERS

| ANALOG CONTROLS <sup>1</sup> |         | Slices per HOUR | Description                  | Volts | Watts | NEMA Plug | Width [in.] | Depth [in.] | Height [in.] | Ship Wt. [lb.] | Freight Class |
|------------------------------|---------|-----------------|------------------------------|-------|-------|-----------|-------------|-------------|--------------|----------------|---------------|
| QCS1-350                     | \$1,362 | 350             | 1.5" Opening COMPACT TOASTER | 120   | 1600  | 5-15P     | 14.25       | 18.88       | 13.25        | 44             | 85            |
| QCS1-500B                    | \$2,453 | 500             | 1.5" Opening BAGEL TOASTER   | 120   | 1600  | 5-15P     | 14.25       | 18.88       | 13.25        | 44             | 85            |

All prices F.O.B Smithville, TN

## HOLMAN QCS2 COMPACT CONVEYOR TOASTERS



### ⚡ HOLMAN QCS2 CONVEYOR TOASTERS

| ANALOG CONTROLS |         | ELECTRONIC CONTROLS |         | Slices per HOUR | Description                  | Volts <sup>1</sup> | Watts | NEMA Plug   | Width [in.] | Depth [in.] | Height [in.] | Ship Wt. [lb.] | Freight Class |
|-----------------|---------|---------------------|---------|-----------------|------------------------------|--------------------|-------|-------------|-------------|-------------|--------------|----------------|---------------|
| QCS2-500        | \$2,840 | QCSe2-500           | \$3,316 | 500             | 1.5" Opening COMPACT TOASTER | 120                | 1,700 | 5-15P       | 14.50       | 22.38       | 15.63        | 64             | 85            |
| QCS2-600H       | \$3,131 | QCSe2-600H          | \$3,699 | 600             | 3.0" Opening BUN TOASTER     | 208 240*           | 2,800 | 6-20P 6-20P | 14.50       | 22.38       | 15.63        | 64             | 85            |
| QCS2-800        | \$2,730 |                     |         | 800             | 1.5" Opening COMPACT TOASTER | 208 240            | 2,800 | 6-20P 6-20P | 14.50       | 22.38       | 15.63        | 64             | 85            |
| QCS2-1200B      | \$3,568 |                     |         | 1,200           | 1.75" Opening BAGEL TOASTER  | 208                | 3,200 | 6-20P       | 14.50       | 22.38       | 15.63        | 64             | 85            |

All prices F.O.B Smithville, TN      1 - Specify 120V, 208V, 240V when ordering      \* 240V not available on QCSe2-600H model





## HOLMAN QCS3 HIGH-VOLUME CONVEYOR TOASTERS

### ⚡ HOLMAN QCS3 HIGH VOLUME CONVEYOR TOASTERS



| ANALOG CONTROLS                 |         | Slices per HOUR | Description                  | Volts <sup>1</sup>       | Watts <sup>1</sup> | NEMA Plug      | Width [in.] | Depth [in.] | Height [in.] | Ship Wt. [lb.] | Freight Class |
|---------------------------------|---------|-----------------|------------------------------|--------------------------|--------------------|----------------|-------------|-------------|--------------|----------------|---------------|
| QCS3-1000                       | \$3,516 | 1,000           | 1.5" Opening COMPACT TOASTER | 208                      | 3,200              | 6-20P          | 18.50       | 22.38       | 15.63        | 68             | 85            |
| QCS3-950H                       | \$3,484 | 950             | 3.0" Opening BUN TOASTER     | 208<br>240               | 3,200              | 6-20P<br>6-20P | 18.50       | 22.38       | 15.63        | 68             | 85            |
| QCS3-1300                       | \$4,212 | 1,300           | 1.5" Opening COMPACT TOASTER | 208                      | 3,600              | 6-30P          | 18.50       | 22.38       | 15.63        | 68             | 85            |
| QCS3-1600B                      | \$4,148 | 1,600           | 3.0" Opening BAGEL TOASTER   | 208                      | 3,400              | 6-30P          | 18.50       | 22.38       | 15.63        | 68             | 85            |
| All prices F.O.B Smithville, TN |         |                 |                              | 1 - Specify 208V or 240V |                    |                |             |             |              |                |               |



## HOLMAN QCS3 SPECIALTY CONVEYOR TOASTERS

### ⚡ HOLMAN SPECIALTY CONVEYOR TOASTERS



QCS3-1400BH

| ANALOG CONTROLS                 |         | Slices per HOUR | Description  | Volts <sup>1</sup> | Watts | NEMA Plug      | Width [in.] | Depth [in.] | Height [in.] | Ship Wt. [lb.] | Freight Class | BELT Width & Capacity |
|---------------------------------|---------|-----------------|--|--------------------|-------|----------------|-------------|-------------|--------------|----------------|---------------|-----------------------|
| DT14                            | \$7,386 | 2,000           | 2.25" Top Opening<br>1.75" Bottom Opening<br>DOUBLE CONVEYOR<br>TOASTER                    | 208<br>240         | 4,800 | 6-30P          | 19.50       | 23.43       | 24.06        | 102            | 85            | 14"<br>3 Slices       |
| QCS3-1400BH                     | \$4,530 | 1,400           | 3.0" Opening<br>VARIABLE BAGEL<br>& BREAD TOASTER  | 208<br>240         | 3,400 | 6-30P<br>6-30P | 18.50       | 22.38       | 15.63        | 68             | 85            | 14"<br>3 Slices       |
| RCS2-600BN                      | \$2,563 | 600             | 1.75" Opening<br>COMPACT<br>BAGEL TOASTER  | 120                | 1,700 | 5-15P          | 9.90        | 23.25       | 17.20        | 58             | 85            | 5"<br>1 Slice         |
| All prices F.O.B Smithville, TN |         |                 | 1 - Specify 120V, 208V, or 240V Service when ordering. All units rated for 50-60Hz cycles. |                    |       |                |             |             |              |                |               |                       |



## ULTRA-MAX IMPINGEMENT CONVEYOR OVENS

Impingement Conveyor Ovens are great for...

- Toasting sandwiches, baking cookies & cinamon rolls
- Baking smaller blanched or par-baked pizzas
- High-volume, varied menu applications
- High power applications



**UltraMax**



### STAR ULTRA-MAX GAS IMPINGEMENT CONVEYOR OVENS - DIGITAL CONTROLS

| Model No.  | Price F.O.B<br>Smithville, TN | BTU <sup>1</sup> | Volts <sup>2</sup> | NEMA<br>Plug | Chamber<br>[in.]  | Belt<br>Width<br>[in.] | Belt<br>Length<br>[in.] | Width<br>[in.] | Depth<br>[in.] | Height<br>[in.] | Ship<br>Wt.<br>[lb.] | Freight<br>Class |
|--|-------------------------------|------------------|--------------------|--------------|---|------------------------|-------------------------|----------------|----------------|-----------------|----------------------|------------------|
| UM1854   | \$19,158                      | 40,000           | 120                | 5-15P        | 28  | 18.9                   | 54                      | 60.60          | 39.30          | 23.30           | 352                  | 25               |
| 1 - Specify Natural Gas or Propane when ordering |                               |                  |                    |              |   |                        |                         |                |                |                 |                      |                  |
| Gas Conveyor ovens can be stacked two (2) high   |                               |                  |                    |              | FREE START-UP for this product through approved service agent |                        |                         |                |                |                 |                      |                  |



### STAR ULTRA-MAX ELECTRIC IMPINGEMENT CONVEYOR OVENS - DIGITAL CONTROLS

ELECTRIC CONVEYOR OVENS  
CAN BE STACKED 2-HIGH

| Model No.   | Stainless<br>Belt | Price F.O.B<br>Smithville, TN | Silicone<br>Belt | Volts <sup>1</sup> | NEMA<br>Plug   | Watts | Chamber<br>[in.]  | Belt<br>Width<br>[in.] | Belt<br>Length<br>[in.] | Width<br>[in.] | Depth<br>[in.] | Height<br>[in.] | Ship<br>Wt.<br>[lb.] | Freight<br>Class |
|---|-------------------|-------------------------------|------------------|--------------------|----------------|-------|---|------------------------|-------------------------|----------------|----------------|-----------------|----------------------|------------------|
| UM1833A   | \$11,938          | -                             | -                | 208<br>240         | 6-30P<br>6-30P | 6,400 | 24  | 18.9                   | 33                      | 37.20          | 30.40          | 20.00           | 272                  | 85               |
| UM1850A   | \$12,592          | UM1850AT                      | \$13,682         | 208<br>240         | 6-30P<br>6-30P | 6,400 | 24  | 18.9                   | 50                      | 50.00          | 30.40          | 20.00           | 290                  | 85               |
| 1 - Specify 208V or 240V Service                    |                   |                               |                  |                    |                |       |   |                        |                         |                |                |                 |                      |                  |
| Electric Conveyor ovens can be stacked two (2) high |                   |                               |                  |                    |                |       | FREE START-UP for this product through approved service agent |                        |                         |                |                |                 |                      |                  |

## ACCESSORIES

| Model No. | Price F.O.B<br>Smithville, TN | Description             | Ship Wt.<br>[lb.] | Freight<br>Class |
|-----------|-------------------------------|-------------------------|-------------------|------------------|
| UMENTRY6  | \$177                         | 6" CONVEYOR ENTRY SHELF | 3                 | 85               |
| UMEXIT8   | \$151                         | 8" CONVEYOR EXIT SHELF  | 4                 | 85               |
| UMEXIT11  | \$151                         | 11" CONVEYOR EXIT SHELF | 3                 | 85               |
| ES-UM1854 | \$2,623                       | EQUIPMENT STAND UM1854  | 50                | 85               |





## HOLMAN QUARTZ HEATER CONVEYOR OVENS

Quartz Conveyor Ovens are great for...

- Toasting sandwiches, baking cookies & cinamon rolls
- Baking smaller blanched or par-baked pizzas
- Countertop applications, limited space
- Lower power or low-voltage applications



## HOLMAN QUARTZ HEATER ELECTRIC CONVEYOR OVENS - ANALOG CONTROLS

ELECTRIC CONVEYOR OVENS  
CAN BE STACKED 2-HIGH

| Model No. | Price F.O.B. Smithville, TN | Volts <sup>1</sup> | Watts                   | NEMA Plug                     | Chamber [in.] | Belt Width [in.] | Belt Length [in.] | Width [in.] | Depth [in.] | Height [in.] | Ship Wt. [lb.] | Freight Class |
|-----------|-----------------------------|--------------------|-------------------------|-------------------------------|---------------|------------------|-------------------|-------------|-------------|--------------|----------------|---------------|
| 210HX     | \$4,991                     | 120<br>208<br>220  | 1,700<br>2,800<br>2,800 | 5-15P<br>6-20P<br>6-20P       | 17            | 10.0             | 31                | 31.00       | 15.44       | 14.00        | 60             | 85            |
| 214HX     | \$5,414                     | 208<br>240<br>220  | 4,000                   | 6-30P<br>6-30P<br>Field Wired | 17            | 14.0             | 31                | 31.00       | 19.44       | 14.00        | 66             | 85            |
| 314HX     | \$10,357                    | 208<br>220         | 5,400                   | 6-30P<br>Field Wired          | 21.5          | 14.0             | 38                | 38.69       | 21.25       | 16.13        | 115            | 85            |

1 - Specify 120, 208V, 240V or 220V service when ordering. All units rated for 50-60Hz cycles.

Electric Conveyor ovens can be stacked two (2) high

## ACCESSORIES

| Model No. | Price F.O.B. Smithville, TN | Description        | Ship Wt. [lb.] | Freight Class |
|-----------|-----------------------------|--------------------|----------------|---------------|
| SSK-210HX | \$858                       | 210HX STACKING KIT | 22             | 85            |
| SSK-214HX | \$858                       | 214HX STACKING KIT | 24             | 85            |
| SSK-314HX | \$858                       | 314HX STACKING KIT | 38             | 85            |





# TORTILLA WARMER



## ROLLING TORTILLA WARMER

Also great for FLATBREADS and PITAS

- Replaces the need to take up valuable flat grill space to simply warm tortillas, flatbreads, and pitas
- Easy to operate. Straightforward design and digital controls ensure effortless operation and minimal employee training
- Durable non-stick rollers make cleanup easy, resulting in a reduction in labor and chemical costs
- Easily programmable digital controls for unique menu items
- No hood required, place anywhere - counter or wall mount

RTW19EA



### RTW14EA

6" TORTILLAS  
30 per minute

10" TORTILLAS  
12 per minute

12" TORTILLAS  
10 per minute

### RTW19EA

6" TORTILLAS  
45 per minute

10" TORTILLAS  
24 per minute

12" TORTILLAS  
12 per minute

PER MINUTE WITH SOME STACKING

## STAR ELECTRIC TORTILLA, PITA & FLATBREAD WARMER

| Model No. | Prices F.O.B. Smithville, TN | # of 6-inch TORTILLAS per minute | Volts          | NEMA Plug      | Watts               | Width [in] | Depth [in] | Height [in] | Ship Wt. [lb] | Freight Class |
|-----------|------------------------------|----------------------------------|----------------|----------------|---------------------|------------|------------|-------------|---------------|---------------|
| RTW14EA   | \$8,429                      | 30 tortillas                     | 120<br>208/240 | 5-15P<br>6-15P | 1,787<br>1351-1,787 | 19.6       | 21.3       | 12          | 69            | 85            |
| RTW19EA   | \$8,850                      | 45 tortillas                     | 208/240        | 6-15P          | 1,905-2,537         | 24         | 21.3       | 12          | 77            | 85            |

Specify Voltage when ordering.

## ACCESSORIES

| Model No.   | Prices F.O.B. Smithville, TN | Description                    | Ship Wt. [lb.] | Freight Class |
|-------------|------------------------------|--------------------------------|----------------|---------------|
| RTW14EA-WMB | \$121                        | 14" WALL MOUNT KIT for RTW14EA | 9              | 85            |
| RTW19EA-WMB | \$134                        | 19" WALL MOUNT KIT for RTW19EA | 11             | 85            |



# DRAWER WARMERS



## TOASTMASTER DRAWER WARMERS



3A81DT09



3C80AT09

### ⚡ TOASTMASTER FREE-STANDING DRAWER WARMERS

| Model No.                                       | Price FOB<br>Smithville, TN | #<br>Drawers | #<br>Tstats | Steam<br>Pan Size<br>[in.] | Volts | Watts | NEMA<br>Plug | Width<br>[in.] | Depth<br>[in.] | Height<br>[in.] | Ship<br>Wt.<br>[lb.] | Freight<br>Class |
|---|-----------------------------|--------------|-------------|----------------------------|-------|-------|--------------|----------------|----------------|-----------------|----------------------|------------------|
| <b>ONE (1) DRAWER WARMER - FREE STANDING</b>    |                             |              |             |                            |       |       |              |                |                |                 |                      |                  |
| 3A81DT09  | \$2,900                     | 1            | 1           | 20x12x5                    | 120   | 400   | 5-15P        | 29.19          | 19.53          | 15.00           | 94                   | 85               |
| <b>TWO (2) DRAWER WARMERS - FREE STANDING</b>   |                             |              |             |                            |       |       |              |                |                |                 |                      |                  |
| 3B84DT09  | \$4,148                     | 2            | 2           | 20x12x5                    | 120   | 900   | 5-15P        | 23.19          | 19.53          | 25.56           | 140                  | 85               |
| <b>THREE (3) DRAWER WARMERS - FREE STANDING</b> |                             |              |             |                            |       |       |              |                |                |                 |                      |                  |
| 3C84DT09  | \$6,458                     | 3            | 3           | 20x12x5                    | 120   | 1,350 | 5-15P        | 29.19          | 19.53          | 29.19           | 223                  | 85               |

### ⚡ TOASTMASTER BUILT-IN DRAWER WARMERS

| Model No.                                  | Price FOB<br>Smithville, TN | #<br>Drawers | #<br>Tstats | Steam<br>Pan Size<br>[in.] | Volts <sup>1</sup> | Watts    | Width<br>[in.] | Depth<br>[in.] | Height<br>[in.] | Ship<br>Wt.<br>[lb.] | Freight<br>Class |
|--|-----------------------------|--------------|-------------|----------------------------|--------------------|----------|----------------|----------------|-----------------|----------------------|------------------|
| <b>ONE (1) DRAWER WARMER - BUILT-IN</b>    |                             |              |             |                            |                    |          |                |                |                 |                      |                  |
| 3A20AT09                                   | \$2,488                     | 1            | 1           | 16x16x5                    | 120                | 450      | 23.06          | 23.00          | 12.13           | 82                   | 85               |
| 3A80AT09                                   | \$2,851                     | 1            | 1           | 20x12x5                    | 120                | 400      | 29.19          | 19.53          | 10.88           | 84                   | 85               |
| 3A80AT72                                   | \$2,845                     | 1            | 1           | 20x12x5                    | 208/240            | 400/540  | 29.19          | 19.53          | 10.88           | 84                   | 85               |
| <b>TWO (2) DRAWER WARMERS - BUILT-IN</b>   |                             |              |             |                            |                    |          |                |                |                 |                      |                  |
| 3B20AT09                                   | \$4,803                     | 2            | 1           | 16x16x5                    | 120                | 1000     | 23.19          | 23.00          | 22.75           | 138                  | 85               |
| 3B80AT09                                   | \$4,546                     | 2            | 1           | 20x12x5                    | 120                | 1000     | 29.19          | 19.53          | 21.75           | 144                  | 85               |
| 3B80AT72                                   | \$4,590                     | 2            | 1           | 20x12x5                    | 208/240            | 900/1200 | 29.19          | 19.53          | 21.75           | 144                  | 85               |
| 3B84AT09                                   | \$4,639                     | 2            | 2           | 20x12x5                    | 120                | 900      | 29.19          | 19.53          | 21.75           | 144                  | 85               |
| 3B84AT72                                   | \$4,639                     | 2            | 2           | 20x12x5                    | 208/240            | 850/980  | 29.19          | 19.53          | 21.75           | 144                  | 85               |
| <b>THREE (3) DRAWER WARMERS - BUILT-IN</b> |                             |              |             |                            |                    |          |                |                |                 |                      |                  |
| 3C80AT09                                   | \$6,065                     | 3            | 1           | 20x12x5                    | 120                | 1350     | 29.19          | 19.53          | 29.18           | 186                  | 85               |

All built in drawer warmers are field wired. 1 - Specify 120V or 208/240V Service when ordering.





# HOT DOG EQUIPMENT

## GRILL-MAX ROLLER GRILLS

ANALOG & ELECTRONIC CONTROL OPTIONS

BUILT-IN BUN DRAWER OPTIONS

STALTEK, DURATEC & CHROME ROLLER OPTIONS

## BROIL-O-DOG CRADLES • STEAMERS

## BUN BOXES • SNEEZE GUARDS • ACCESSORIES

STAINLESS STEEL & CLEAR DOOR BUN BOX OPTIONS

1 OR 2-DOOR, SHEILD & GLASS CANOPY SNEEZE GUARD OPTIONS

DIVIDER KITS & MERCHANDISING DOORS





## ROLLER GRILL BUYING GUIDE

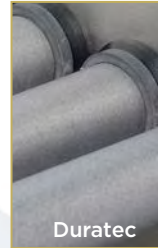
### ROLLER FINISH OPTIONS



#### STALTEK™ COATING

- Most durable coating in the market
- Star exclusive innovative coating
- Unparalleled grip performance
- Coating rolls uneven product
- Withstands vigorous cleaning

**STALTEK™ COATING**  
MOST DURABLE IN THE MARKET



#### DURATEC™ COATING

- Non-stick roller coating facilitates cleaning
- Finish designed to grip and turn consistently



#### CHROME COATING

- Less expensive coating option
- Durable, can take a brisk cleaning
- Shiny and attractive when clean

### CONTROL OPTIONS

#### ANALOG VS. ELECTRONIC

##### ANALOG CONTROLS

Analog controls for front and rear temperature zones are durable and economical, but don't allow for fine temperature adjustments

##### ELECTRONIC PROGRAMMABLE CONTROLS

Electronic controls allow the roller grill to react to grill surface temps, resulting in consistent temperatures and better quality products.

Program individual product cook/hold times & temps, taking the guesswork out of preparing menu items



ANALOG



ELECTRONIC

### BUN DRAWERS

#### BUILT-IN VS. STAND ALONE

##### BUILT-IN BUN DRAWER

Eliminates the need for a separate piece of equipment, but has limited capacity as to storage

##### STAND ALONE BUN DRAWER

May be heated or unheated, depending on the bread and if buns are individually wrapped. Can be stacked beneath a roller grill, which increases height. Can be built-in to cabinets, or drop surfaces

### ROLLER GRILLS FEATURE STADIUM SEATING

Stadium seating slanted roller design provide a 3° to 5° slope for the best presentation of your products increasing sales and impulse purchases

Flat roller grills available! Used for double-sided or employee serving, and can be recessed below the counter. Contact factory for details and pricing





## ROLLER GRILL BUYING GUIDE

### ROLLER GRILL SPECS

| Series No. | Width [in.] | Depth [in.] | Height [in.] | Ship Wt. [lb.] | Bun Drawer Ship Wt. [lb.] |
|------------|-------------|-------------|--------------|----------------|---------------------------|
| 20         | 17.13       | 20.63       | 12.50        | 44             | -                         |
| 30         | 23.75       | 20.63       | 12.50        | 53             | 63                        |
| 45         | 23.75       | 28.50       | 12.50        | 69             | 80                        |
| 50         | 35.75       | 20.63       | 12.50        | 69             | 80                        |
| 75         | 35.75       | 28.50       | 15.50        | 108            | 120                       |

### MODEL NAME FORMULA

**MODEL NAME =**  
**Series No. + Type:**

| Series No. | Capacity Hot Dogs | Type: C Chrome | Type: SC Duratec |
|------------|-------------------|----------------|------------------|
| 20         | 20 dogs           | 20C            | 20SC             |
| 30         | 30 dogs           | 30C            | 30SC             |

### Series No. & Roller Grill Capacity

#### SERIES NO.

| Series No. | Capacity* Hot Dogs | Description   |
|------------|--------------------|---|
| 20         | 20 hot dogs        | Ideal for low-volume locations, small to no product variation and small footprint areas. 11 rollers per grill |
| 30         | 30 hot dogs        | Popular size. 11 rollers per grill  |
| 45         | 45 hot dogs        | Great for deeper countertops with limited left-to-right space. 16 rollers per grill                           |
| 50         | 50 hot dogs        | Most popular size. 11 rollers per grill   |
| 75         | 75 hot dogs        | Lots of room for high-volume locations. 16 rollers per grill  |

#### INDUSTRY INNOVATION LEADERS

UNITED STATES PATENT NUMBERS

6,393,971 | 6,782,802 | 7,520,211

6,659,574 7,367,261 | 7,334,517

6,707,015 and counting!



# ROLL

A **WIDE RANGE**  
OF **PRODUCTS**  
WITH **GRILL-MAX**





# ROLLER GRILLS / HOT DOG EQUIPMENT



## GRILL-MAX ROLLER GRILLS



### ⚡ STAR GRILL-MAX ROLLER GRILLS

| ANALOG Controls  |                   |                |                  |                  | ELECTRONIC Controls  |                   |                            |                            |                                |
|--|-------------------|----------------|------------------|------------------|--|-------------------|----------------------------|----------------------------|--------------------------------|
| Series No.   | Capacity Hot Dogs | Type: C Chrome | Type: SC Duratec | Type: ST StalTek | Type: SCE Duratec  | Type: STE StalTek | Volts <sup>1</sup>         | Watts                      | NEMA Plug                      |
| 20   | 20 dogs           | \$2,300        | \$2,500          | -                | -  | -                 | 120                        | 930                        | 5-15P                          |
| 30   | 30 dogs           | \$2,354        | \$2,629          | \$2,898          | \$3,316  | \$3,584           | 120<br>230*                | 1150<br>1150               | 5-15P<br>CEE7/7                |
| 45   | 45 dogs           | \$2,918        | \$3,454          | \$3,987          | \$4,141  | -                 | 120<br>120 (CSA)**<br>230* | 1650<br>1700 (CSA)<br>1650 | 5-15P<br>5-20P (CSA)<br>CEE7/7 |
| 50   | 50 dogs           | \$2,708        | \$3,131          | \$3,550          | \$3,818  | \$4,237           | 120<br>120 (CSA)**         | 1535<br>1535 (CSA)         | 5-15P<br>5-20P (CSA)           |
| 75   | 75 dogs           | \$4,030        | \$4,911          | \$5,888          | \$5,597  | \$6,576           | 120<br>120 (CSA)**<br>230* | 1730<br>1730 (CSA)<br>2016 | 5-15P<br>5-20P (CSA)<br>CEE7/7 |
| 1 - Add \$287 for 230V Service                                 |                   |                |                  |                  | All prices F.O.B Smithville, TN  |                   |                            |                            |                                |
| * 230V Service available for models - 30SCE, 45SC, 45SCE, 75SC |                   |                |                  |                  | ** 120V (CSA) Canadian Service available for models - 45SCE, 50SCE, 50STE, 75SCE |                   |                            |                            |                                |

### MODEL NAME FORMULA

**MODEL NAME = Series No. + Type:**

| Series No. | Capacity Hot Dogs | Type: C Chrome | Type: SC Duratec |
|------------|-------------------|----------------|------------------|
| 20         | 20 dogs           | 20C            | 20SC             |
| 30         | 30 dogs           | 30C            | 30SC             |

[Roller Grill Specs & capacity on page 42](#)

[Built-in Bun Drawer Roller Grill options on page 44](#)

[Roller Grill Sneeze Guards & Accessories on page 45](#)

75STBD with  
SNEEZE  
GUARD





# ROLLER GRILLS / HOT DOG EQUIPMENT



## GRILL-MAX ROLLER GRILLS with BUILT-IN BUN DRAWER

**STAR GRILL-MAX ROLLER GRILLS  
with BUILT-IN BUN DRAWER**



75SCBD

| ANALOG Controls   |                    |                  |                    |                    | ELECTRONIC Controls |                     |                                 |                                 |                               |
|---|--------------------|------------------|--------------------|--------------------|---------------------|---------------------|---------------------------------|---------------------------------|-------------------------------|
| Series No.  | Capacity Hot Dogs  | Type: CBD Chrome | Type: SCBD Duratec | Type: STBD StalTek | Type: SCBDE Duratec | Type: STBDE StalTek | Volts <sup>1</sup>              | Watts                           | NEMA Plug                     |
| 30  | 30 dogs<br>32 buns | \$3,174          | \$3,449            | \$3,717            | \$4,136             | \$4,405             | 120                             | 1150                            | 5-15P                         |
| 45  | 45 dogs<br>32 buns | -                | \$4,273            | \$4,808            | \$4,961             | \$5,494             | 120                             | 1650                            | 5-15P                         |
| 50  | 50 dogs<br>48 buns | \$3,527          | \$3,951            | \$4,370            | \$4,637             | \$5,056             | 120<br>120 (CSA)*<br>208/240**  | 1535<br>1535 (CSA)<br>1250/1670 | 5-15P<br>5-20P (CSA)<br>6-15P |
| 75  | 75 dogs<br>48 buns | -                | \$5,731            | \$6,708            | \$6,416             | \$7,396             | 120<br>208/240**                | 1730<br>1810/2400               | 5-15P<br>6-20P                |
| * 120V (CSA) Canadian Service available for models - 50STBD, 50STBDE                |                    |                  |                    |                    |                     |                     | All prices F.O.B Smithville, TN |                                 |                               |
| ** 208/240V Service available for models - 50STBD, 50STBDE, 75STBD, 75SCBDE, 75STBD |                    |                  |                    |                    |                     |                     |                                 |                                 |                               |

**STAR GRILL-MAX ROLLER GRILLS  
with CLEAR BUN DRAWER**



50SCBBC  
CLEAR BUN DRAWER  
with sneeze guard accessory  
purchased separately

| ANALOG Controls   |                    |                   |                     |                    |              |                 |             |             |              |                                 |               |
|---|--------------------|-------------------|---------------------|--------------------|--------------|-----------------|-------------|-------------|--------------|---------------------------------|---------------|
| Series No.  | Capacity Hot Dogs  | Type: CBBC Chrome | Type: SCBBC Duratec | Volts <sup>1</sup> | Watts        | NEMA Plug       | Width [in.] | Depth [in.] | Height [in.] | Ship Wt. [lb.]                  | Freight Class |
| 30  | 30 dogs<br>24 buns | \$3,252           | \$3,527             | 120<br>230*        | 1150<br>1150 | 5-15P<br>CEE7/7 | 23.75       | 20.63       | 12.50        | 53                              | 100           |
| 50  | 50 dogs<br>40 buns | -                 | \$4,029             | 120<br>230*        | 1535<br>1535 | 5-15P<br>BS1363 | 35.75       | 20.63       | 12.50        | 69                              | 100           |
| 1 - Add \$287 for 230V Service * 230V Service available for models - 30CBBC, 30SCBBC, 50SCBBC |                    |                   |                     |                    |              |                 |             |             |              | All prices F.O.B Smithville, TN |               |

[Roller Grill Specs & capacity on page 42](#)

[Roller Grill Sneeze Guards & Accessories on page 45](#)



# ROLLER GRILLS / HOT DOG EQUIPMENT



## BUN BOXES, SNEEZE GUARDS & ROLLER GRILL ACCESSORIES

### STAR GRILL-MAX UNHEATED BUN BOX



SS30BBC  
UNHEATED  
CLEAR BUN DOOR

| Model No. | Bun Box<br>see-thru<br>CLEAR DOOR | Model No. | Bun Box<br>STAINLESS<br>STEEL | Description                        | Width<br>[in.] | Depth<br>[in.] | Height<br>[in.] | Ship<br>Wt.<br>[lb.] | Freight<br>Class |
|-----------|-----------------------------------|-----------|-------------------------------|------------------------------------|----------------|----------------|-----------------|----------------------|------------------|
| SS30BBC   | \$764                             |           | -                             | Series 30 & 45 (Capacity: 48 buns) | 23.25          | 20.60          | 6.90            | 39                   | 100              |
| SS50BBC   | \$835                             | SS50BB    | \$1,177                       | Series 50 & 75 (Capacity: 64 buns) | 35.75          | 20.60          | 6.90            | 49                   | 100              |

### STAR SNEEZE GUARDS



SIGN HOLDER 50SH

GLASS CANOPY  
SNEEZE GUARD  
50SG-G



NSF2  
APPROVED



30SG-1D



30SGC  
GLASS

| Series No.  | Type: SG-1D<br>Single Door | Type: SG-2D<br>Double Door | Type: SGS<br>Shield <sup>1</sup> | Ship Wt.<br>[lb.] | Type: SG-G<br>Glass Canopy | Type: SH<br>Sign Holder <sup>2</sup> | Ship Wt.<br>[lb.] | Freight Class |
|---|----------------------------|----------------------------|----------------------------------|-------------------|----------------------------|--------------------------------------|-------------------|---------------|
| 20  | \$490                      | -                          | -                                | 7                 | -                          | -                                    | -                 | 100           |
| 30  | \$535                      | \$581                      | \$133                            | 9                 | \$794                      | -                                    | 32                | 100           |
| 45  | \$616                      | -                          |                                  | 13                | \$979                      |                                      |                   | 100           |
| 50  | \$700                      | \$753                      | \$190                            | 17                | \$1,017                    | \$201                                | 45                | 100           |
| 75  | \$825                      | \$945                      |                                  | 18                | \$1,349                    |                                      |                   | 100           |
| 1 - Optional shield to convert sneeze guard doors into a pass-thru sneeze guard |                            |                            |                                  |                   |                            | All prices F.O.B Smithville, TN      |                   |               |
| 2 - Optional sign holder for Glass Canopy sneeze guards                         |                            |                            |                                  |                   |                            |                                      |                   |               |

### GLASS SNEEZE GUARDS

Open concept  
is modern looking  
and easy to clean

### PLEXI-GLASS SNEEZE GUARDS

Enclosed design  
keeps 10-15°F  
higher temps

### MERCHANDISING DOORS & MISC. ROLLER GRILL ACCESSORIES

| Model No.                  | Price F.O.B<br>Smithville, TN | Description          | Ship Wt.<br>[lb.] | Freight<br>Class |
|----------------------------|-------------------------------|----------------------|-------------------|------------------|
| <b>MERCHANDISING DOORS</b> |                               |                      |                   |                  |
| 20RGMD                     | \$175                         | Series 20 doors      | 5                 | 100              |
| 30RGMD                     | \$205                         | Series 30 & 45 doors | 5                 | 100              |
| 50RGMD                     | \$224                         | Series 50 & 75 doors | 7                 | 100              |
| <b>OTHER ACCESSORIES</b>   |                               |                      |                   |                  |
| RGLK                       | \$87                          | 4" Adjustable Legs   | 2                 | 100              |
| THU                        | \$121                         | Tong Holder          | 1                 | 100              |

### DIVIDER KITS

| Model<br>No. | Price F.O.B<br>Smithville, TN | Description | Ship<br>Wt. [lb.] | Freight<br>Class |
|--------------|-------------------------------|-------------|-------------------|------------------|
| 30RGDKC      | \$291                         | Series 30   | 2                 | 100              |
| 45RGDKC      | \$401                         | Series 45   | 4                 | 100              |
| 50RGDKC      | \$311                         | Series 50   | 6                 | 100              |
| 75RGDKC      | \$428                         | Series 75   | 8                 | 100              |



DIVIDER KIT  
30RGDKC





# ROLLER GRILLS / HOT DOG EQUIPMENT



## CRADLE BROIL-O-DOG & HOT DOG STEAMER

### ⚡ STAR CRADLE BROIL-O-DOG with BUN WARMING COMPARTMENT



174CBA

| Model No. | Price F.O.B<br>Smithville, TN | Capacity             | Watts <sup>1</sup><br>120V | Width<br>[in.] | Depth<br>[in.] | Height<br>[in.] | Ship<br>Wt.<br>[lb.] | Freight<br>Class |
|-----------|-------------------------------|----------------------|----------------------------|----------------|----------------|-----------------|----------------------|------------------|
| 174CBA    | \$2,344                       | 18 hot dogs, 12 buns | 1,150                      | 13.50          | 14.50          | 24.00           | 56                   | 100              |
| 175CBA    | \$2,643                       | 36 hot dogs, 32 buns | 1,535                      | 19.50          | 14.50          | 24.00           | 71                   | 100              |

1 - NEMA 5-15P plug standard for 120V applications

### ⚡ STAR HOT DOG STEAMER with JUICE TRAY

| Model No. | Price F.O.B<br>Smithville, TN | Capacity                         | Watts <sup>1</sup><br>120V | Width<br>[in.] | Depth<br>[in.] | Height<br>[in.] | Ship<br>Wt.<br>[lb.] | Freight<br>Class |
|-----------|-------------------------------|----------------------------------|----------------------------|----------------|----------------|-----------------|----------------------|------------------|
| 35SSA     | \$1,318                       | 170 dogs, 18 buns (w/Juice Tray) | 800                        | 14.75          | 16.50          | 15.60           | 30                   | 100              |
| 35SSC     | \$1,235                       | 130 dogs, 30-40 buns             | 1,000                      | 18.00          | 15.00          | 15.60           | 27                   | 100              |
| 70SSA     | \$2,059                       | 230 dogs, 36 buns (w/Juice Tray) | 1,000                      | 18.75          | 16.50          | 15.60           | 38                   | 100              |

1 - NEMA 5-15P plug standard for 120V applications



35SSC



35SSA



# WAFFLE BAKERS



## WAFFLE BAKERS



SWBS



SWBD

### STAR WAFFLE MAKERS TRADITIONAL & BELGIAN STYLE

| Model No.                                     | Price F.O.B Smithville, TN | Description                           | Volts <sup>1</sup>   | Watts                 | NEMA Plug                | Width [in.] | Depth [in.] | Height <sup>2</sup> [in.] | Ship Wt. [lb.] | Freight Class |
|---|----------------------------|---------------------------------------|--|-----------------------|--------------------------|-------------|-------------|---------------------------|----------------|---------------|
| SWBB  | \$3,680                    | 7" DIAMETER BELGIAN WAFFLE SINGLE     | 120<br>208/240<br>230*                                     | 900<br>675/900<br>900 | 5-15P<br>6-15P<br>CEE7/7 | 10.19       | 14.00       | 10.56                     | 30.2           | 85            |
| SWBS  | \$1,729                    | 7" DIAMETER TRADITIONAL WAFFLE SINGLE | 120<br>208/240   | 900<br>675/900        | 5-15P<br>6-15P           | 10.13       | 13.50       | 8.75                      | 15             | 85            |
| SWBD  | \$2,889                    | 7" DIAMETER TRADITIONAL WAFFLE DOUBLE | 120<br>208/240   | 1800<br>1350/1800     | 5-15P<br>6-15P           | 19.81       | 13.50       | 8.75                      | 28             | 85            |
| 1 - * 230V Service available for model - SWBB |                            |                                       | 2 - Height measurement information for closed waffle maker |                       |                          |             |             |                           |                |               |

**WAFFLE BAKER**  
**RECIPES, VIDEOS & MORE**  
**VISIT STAR-MFG.COM**



<https://star-mfg.com/product/star-waffle-makers-traditional-belgian-style-swbd/>



# HEATED PERISTALTIC DISPENSERS



## HEATED PERISTALTIC DISPENSERS



HPDE2H



HPDE1H



### STAR HEATED PERISTALTIC DISPENSERS

| Model No. | Price F.O.B<br>Smithville, TN | Description  | Volts <sup>1</sup> | NEMA<br>Plug     | Watts | Width<br>[in.] | Depth<br>[in.] | Height<br>[in.] | Ship<br>Wt.<br>[lb.] | Freight<br>Class |
|-----------|-------------------------------|--|--------------------|------------------|-------|----------------|----------------|-----------------|----------------------|------------------|
| HPDE2     | \$2,740                       | DOUBLE DISPENSER<br>75RPM, 1 oz/3 sec                                      | 120                | 5-15P            | 1,000 | 14.30          | 20.60          | 26.80           | 61                   | 100              |
| HPDE2H    | \$2,740                       | DOUBLE DISPENSER<br>HIGH PERFORMANCE<br>180RPM, 1oz/sec                    | 120<br>230         | 5-15P<br>CEE 7/7 | 1,000 | 14.30          | 20.60          | 26.80           | 61                   | 100              |
| HPDE2HP   | \$3,020                       | DOUBLE DISPENSER<br>HIGH PERFORMANCE<br>180RPM, 1oz/sec<br>PORTION CONTROL | 120                | 5-15P            | 1,000 | 14.30          | 20.60          | 26.80           | 61                   | 100              |
| HPDE1H    | \$2,197                       | SINGLE DISPENSER<br>HIGH PERFORMANCE<br>180RPM, 1oz/sec                    | 120<br>230         | 5-15P<br>CEE 7/7 | 820   | 9.60           | 20.60          | 26.80           | 48                   | 100              |
| HPDE1HP   | \$2,453                       | SINGLE DISPENSER<br>HIGH PERFORMANCE<br>180RPM, 1oz/sec<br>PORTION CONTROL | 120<br>230*        | 5-15P<br>CEE 7/7 | 820   | 9.60           | 20.60          | 26.80           | 48                   | 100              |

1 - 230V Service available on HPDE2H, HPDE1H, HPDE1HP models. NOTE: \* HPDE1HP-230V model - Add \$240 for 230V Service.





# REFRIGERATED COUNTERTOP SERVER



## REFRIGERATED COUNTERTOP SERVER

### STAR SELF-CONTAINED REFRIGERATED COUNTERTOP SERVER

| Model No.   | Price F.O.B Smithville, TN | Description                                  | Watts | NEMA Plug | Width [in.] | Depth [in.] | Height [in.] | Ship Wt. [lb.] | Freight Class |
|---|----------------------------|--|-------|-----------|-------------|-------------|--------------|----------------|---------------|
| RCR-4   | \$2,869                    | (4) 1/6-pan capacity<br>(2) 1/3 pan capacity | 240   | 5-15P     | 15.13       | 25.88       | 10.5         | 70             | 85            |
| Meets NSF-7 Food Safe Requirements at 35°F. R-134A Refrigerant, 1/16-HP compressor @ 300 BTUH |                            |  |       |           |             |             |              |                |               |



# 2021 MAP/M.R.I.C.P. POLICY



## APW/Bakers Pride/Star Holdings Group (Holman, Lang, MagiKitch'n, Star, Toastmaster & Wells)

Minimum Advertised Price & Minimum Resale Internet Cart

### **MINIMUM ADVERTISED PRICE (MAP) POLICY**

**This Policy applies to all means of Advertised Pricing for all Middleby Commercial Foodservice Brands**

The APW/Bakers Pride/Star Holdings Group (hereinafter "the Group") and the Middleby Corporation (hereinafter "the Corporation") is committed to supporting our Authorized Dealers and Resellers selling the Group's products in or into the United States & Canada by continuing to provide high-quality, premium products for the foodservice industry while maintaining its brand equity and integrity. This Minimum Advertised Price Policy ("MAP") applies to ANY and ALL means of Advertised Pricing, to Any and ALL customers, for all Brands within the Group and the Corporation. Advertising at a price below MAP will be considered a violation of this Policy. This MAP Policy will apply to any activity which the Group or the Corporation determines, in their sole and absolute discretion, is designed or intended to circumvent the intent of this MAP Policy.

- MAP Policy pricing is the Current List Price less 45% for all Group products; and advertised at a price no less than rounded down to the nearest whole number off the Current List Price.
- If a Dealer offers or combines (i.e., "bundling") one or more products from a single or multiple brands of the Group or the Corporation in an advertisement, the aggregate price for all products by the Group and Corporation offered for sale in combination may not be lower than the cumulative MAP for each of the products when sold separately.
- At the Dealer's sole expense, the Dealer may offer or combine the following items of casters, warranty or freight into their product's sell price; not to be below the product's MAP price.

The MAP Policy applies to any advertisements of the Group's products and designs in any and all media, including but not limited to, print advertising (e.g. magazines, catalogs, newspapers, posters, flyers and direct mail), e-mail and facsimile advertising (e.g. broadcast campaigns, flyers, coupons and similar inserts), internet or similar electronic media (e.g. Amazon, eBay, Google), Dealer websites, internet banner ads, social media blasts, social networks, search engine advertising and all other types of digital signage.

All internet advertised prices must show the product's "MAP" price or higher. Any communications stating or implying that a price below MAP may be found elsewhere on the site, that is initiated by the Dealer, would constitute advertising and would be deemed a violation of this MAP Policy. Dealers may not make any statements, displays, or communications that indicate, state, imply, or suggest that a lower price may be found at the online check out, including but not limited to: "Call for Pricing", "Chat for Pricing", "Text for Pricing", "Click for Pricing", "Email for Pricing", "Add to Cart for Pricing", "Mouse Over for Pricing", "Log In for Pricing", strike-through the price, or any of the like. This includes "shopping cart price", "chat box price" and "emailed price" that appear on the internet in any format on any Dealer's public internet website or public internet-based account, including internet search engine shopping feeds, are all subject to the Group and the Corporate MAP Policy. Website features such as automated "bounce-back" pricing emails, pre-formatted email responses, forms, automatic price display, loyalty and reward point systems and other similar features are considered "advertising" under this MAP Policy. Under this MAP Policy, the Group and the Corporation prohibit the use of split-screen, side-by-side advertising, or pop-ups to advertise a similar product of any other brand other than those that are manufactured by other brands within the Corporation. The Group and the Corporation prohibit any Dealer from redirecting (automatically, inadvertently or otherwise) a customer who is in search of a product of the Group, the Corporation or item number to any other non-Middleby brand.

No Dealer may advertise a product of the Group or the Corporation at a price in violation of this MAP Policy on any third-party platform such as Amazon, eBay, Google or any like platforms in which it may operate as a vendor or have a re-distributor operate on its behalf. No Dealer may advertise a price in violation of this MAP Policy in an effort to match or beat a competitor's price. It is a violation of the MAP Policy to advertise a price below MAP pricing, even if such advertised price was automatically or manually generated due to a MAP Policy violation by a vendor or competition another medium or platform.

From time to time, the Group or the Corporation may discontinue certain products or engage in promotions with respect to certain products. In such events, the Group and the Corporation reserve the right to modify or suspend the MAP Policy with respect to the affected products at its sole discretion. Such changes shall apply equally to all Authorized Dealers of the Group and the Corporation.

### **MINIMUM RESALE INTERNET CART PRICE (MRICP) POLICY**

The Minimum Resale Internet Cart Price ("MRICP") applies to the final internet check out prices regardless of providing a customer "log in", membership or similar (e.g., shopping cart prices, chat box prices, emailed prices, and prices on the internet website or search engines) of the Group's or the Corporation's products. The Group requires that when Dealers sell select products (listed below) through internet sales that these products are subject to MRICP and are sold at a price no more than a 52% discount rounded down to the nearest whole number off the current List Price. This MRICP Policy will apply to any activity which the Group or the Corporation determines, in their sole and absolute discretion, is designed or intended to circumvent the intent of this MRICP Policy.

*MAP/M.R.I.C.P. policy continued next page*

# 2021 MAP/M.R.I.C.P. POLICY

*policy continued from previous page*

The MAP Policy and MRICP Policy apply only to advertised prices and do not apply to the price at which the products are actually sold or offered for sale to an individual customer at a Dealer's place of business, including contract negotiations, or negotiations in the field. The decision to implement and enforce the MAP Policy and the MRICP Policy is solely to protect the Group's and the Corporation's brands, reputation and competitiveness and the Authorized Dealers who promote and sell their products based on quantitative and qualitative factors.

## The MRICP policy applies to the following Group Brands and Brand product segments

### Brands in their Entirety

**Bakers Pride**

**Lang**

**MagiKitch'n**

### Star Categories

**Holman** conveyor toasters

(All Labeled Products)

**Pro-Max** Panini's

(PST, PGT, PSC, PGC-Series Products)

**Star** (RTW-Series Products)

**Star-Max** (500 & 600-Series Products)

**Ultra-Max** (All Labeled Products)

### Wells Categories

Drawer Warmers

Heated & Refrigerated Wells

(HT, H/RCP-Series)

Dry Wells (MDW models)

All Ventless Products

## POLICY VIOLATIONS

These MAP and MRICP Policies are not intended as, nor are they to be construed as, an attempt by the Group or the Corporation to set advertised or resale prices or an agreement between the Group, the Corporation and any Authorized Dealer or other party. In addition, the Group and the Corporation will not accept any assurances of compliance with these MAP or MRICP Policies from any Authorized Dealer. Each Authorized Dealer must independently choose whether to comply with the terms of these MAP and MRICP Policies. These MAP and MRICP Policies are not negotiable and will not be altered for any individual Authorized Dealer.

The Group, the Corporation or their agent(s) will conduct a reasonable investigation in response to a suspected MAP and MRICP Policy violation. Failure to cooperate by any Authorized Dealer, including retaliatory actions by any Authorized Dealer with the Group's or the Corporation's investigation will be considered an additional violation.

Failure to meet the terms and conditions of the MAP and MRICP Policies will result in full, unconditional enforcement of the penalties described below. The event of a violation will be determined solely by the Group or the Corporation.

Dealer will be subject to penalties (over a 12-month period) up to and including but not limited to:

- **1st violation:** The Group or the Corporation at a minimum will issue an email communication to the non-compliant dealer requesting their compliance to the MAP and MRICP Policies. Failure to comply within 48 hours (2 days) or a repeated offense within a 3-month period will be considered a 2nd violation.
- **2nd violation:** The Group or the Corporation at a minimum will issue an email notification to the non-compliant dealer requesting their compliance to the MAP and MRICP Policies and will hold all Group shipments and/or the Corporation, until all violations are resolved. Failure to comply within 48 hours (2 days) or a repeated offense within a 6-month period will be considered a 3rd violation.
- **3rd violation** and each violation thereafter: The Group or the Corporation at a minimum will issue an email notification to the non-compliant dealer and buying group as applicable requiring their compliance to the MAP and MRICP Policies and will result in **(a) the dealer's net pricing being increased to a price that is 50% off of the Group's then current published List Price(s) and net pricing increased to standard market discounts off ALL Middleby Corporation Brands published List Prices and (b) any and ALL available rebates, marketing incentives, or program dollars (accrued or due in total) will be forfeited.** Failure to comply within 48 hours (2 days) or a repeated offense within a 12-month period, the Group or the Corporation at a minimum will issue an email notification to the non-compliant Dealer and buying group as applicable informing them of the a) indefinite suspension of their account with the Group and ALL Middleby Corporation Brands and b) permission to use the Group's and the Corporation's brand trademarks, trade names, individual brand and corporate logos, product images and product content will be indefinitely revoked. Reinstatement of the account, preferred pricing and applicable incentives or rebates may be re-evaluated by the Group and the Corporation in their sole discretion after 30 days.

## DEALER ACCOUNTABILITY

In the case of a MAP or MRICP violation by a reseller who does not have an authorized relationship with the Group's or the Corporation's brands and instead purchases the Group's or the Corporation's products from an Authorized Dealer or any other reseller (i.e., dealer-to-dealer sale), the Group and the Corporation will pursue enforcement actions against the Authorized Dealer as provided above in these Policies.

## OTHER PROVISIONS

These Policies are managed by the MAP/MRICP Policy Administrator(s) for the Group and the Corporation. Only the MAP/MRICP Policy Administrator(s), Group President and Group Vice President of Sales and Marketing may provide direction to Dealers concerning compliance with the MAP and MRICP Policies. And ONLY the Group Vice President of Sales and Marketing and Group President may authorize exceptions to the Policies. No other individuals, including any employee or representative of the Group or the Corporation, may provide such direction or authorizations regarding the Group's Policies to any Dealer. It is the Dealer's sole responsibility to remain aware of any changes to the MAP and MRICP Policies.

The terms of the MAP and MRICP Policies are confidential and are not to be disclosed to other parties. The Group and the Corporation have adopted the MAP and MRICP Policies unilaterally in furtherance of its independent business strategy and reserves, at its sole discretion, the right to change the Policies and to interpret, enforce and otherwise handle all questions and issues related to the Policies.



# WARRANTY

## LIMITED EQUIPMENT WARRANTY

Star Manufacturing [as well as its subsidiaries] warrants to the original purchaser of new Star products to be free from defects in material or workmanship, under normal and proper use and maintenance service as specified by Star and upon proper installation and start-up in accordance with the instructions supplied with each Star unit. Star's obligation under this warranty is limited to a period of one [1] year from the date of original installation, or eighteen [18] months from original invoice date, whichever occurs first. Defects that occur as a result of normal use, within the time period and limitations defined in this warranty, will at Star's discretion have the parts replaced or repaired by Star or a Star-authorized service agency.

## THIS WARRANTY IS SUBJECT TO ALL LISTED CONDITIONS

Repairs performed under this warranty are to be performed by a Star authorized service agency. Star will not be responsible for charges incurred or service performed by non-authorized repair agencies. In all cases, the nearest Star-authorized service agency must be used. Star will be responsible for normal labor charges incurred in the repair or replacement of a warrantied product within 50 miles (80.5 km) of an authorized service agency. Time and expense charges for anything beyond that distance will be the responsibility of the owner. All labor will need to be performed during regular service hours. Any overtime premium will be charged to the owner. For all shipments outside the U.S.A. and Canada, please see the International Warranty for specific details. It is the responsibility of the owner to inspect and report any shipping damage claims, hidden or otherwise, promptly following delivery. No mileage or travel charges will be honored on any equipment that is deemed portable. In general, equipment with a cord and plug weighing less than 50 lb. (22.7 kg) is considered portable and should be taken or shipped to the closest authorized service agency, transportation prepaid.

## CONTACT

Should you require any assistance regarding the operation or maintenance of any Star Manufacturing; phone, email or fax our service department. In all correspondence provide the model number and serial number of the unit needing service; include the voltage or gas type.

Normal Business Hours: 8:00 a.m. to 4:30 p.m. Central

Telephone: 800-264-7827 Tech Service Option 2

Email: [TechService@partstown.com](mailto:TechService@partstown.com)

[www.Star-Mfg.com](http://www.Star-Mfg.com)

## WARRANTY EXCLUSIONS

### THE FOLLOWING WILL NOT BE COVERED UNDER WARRANTY.

Star's sole obligation under this warranty is limited to either repair or replacement parts, subject to the additional limitations detailed below. This warranty neither assumes nor authorizes any person to assume obligations other than those expressly covered by this warranty.

- Any product which has not been used, maintained, or installed in accordance with the directions published in the appropriate installation sheet and/or owner's manual, including incorrect gas or electrical connection. Star is not liable for any unit which has been mishandled, abused, misapplied, subjected to harsh chemicals, modified by unauthorized personnel, damaged by flood, fire, or other acts of nature [or God], or which have an altered or missing serial number.
  - Installation, labor, and job checkouts, calibration of heat controls, air and gas burner/bypass/pilot adjustments, gas or electrical system checks, voltage and phase conversions, cleaning of equipment, or seasoning of griddle surface.
  - Replacement of fuses or resetting of circuit breakers, safety controls, or reset buttons.
  - Replacement of broken or damaged glass components, quartz heating elements, and light bulbs.
  - Labor charges for all removable and consumable parts in gas charbroilers and hotplates, including but not limited to burners, grates, and radiants.
  - Any labor charges incurred by delays, waiting time, or operating restrictions that hinder a service technician's ability to perform service.
  - Replacement of parts that fail or are damaged due to normal wear or labor for replacement of parts that can be replaced during a daily cleaning routine, such as but not limited to silicone belts, PTFE non-stick sheets, control labels, knobs, bulbs, fuses, quartz heating elements, baskets, racks, and grease drawers.
  - Any economic loss of business or profits.
  - Non-OEM parts. Use of non-OEM parts without Star's approval will void the warranty.
  - Units exceeding one [1] year from original installation date, or more than eighteen [18] months from original purchase date, whichever comes first.
- ### ADDITIONAL WARRANTIES
- Specific/chain-specific equipment may have additional and/or extended warranties.

| PRODUCTS  | PARTS   | LABOR   |
|---|---------|---------|
| Star Ultra Max ® fryers, griddles, charbroilers and hotplates       | 2 years | 2 years |
| Star Max ® fryers, griddles, charbroilers and hotplates             | 2 years | 2 years |
| Staltek™ roller grill coatings                                      | 5 years |         |
| Cast iron grates, burners and burner shields                        | 1 year  |         |
| Original Star, Toastmaster or Holman parts sold to repair equipment | 90 days |         |

The foregoing warranty is in lieu of any, and all other warranties expressed or implied and constitutes the entire warranty.

# INTERNATIONAL WARRANTY

## ORIGINAL EQUIPMENT WARRANTY

### INTERNATIONAL

(Except U.S. and Canada)

STAR, APW WYOTT, BAKERS PRIDE, LANG, MAGIKITCH'N, TOASTMASTER, WELLS products are warranted to each original Buyer and will be free from defects in material and workmanship for the period specified below, under normal and proper use and maintenance service as specified by "STAR, APW WYOTT, BAKERS PRIDE, LANG, MAGIKITCH'N, TOASTMASTER, WELLS" and upon proper installation and start-up in accordance with the instructions supplied with each. Obligation under this warranty shall be limited to repairing or replacing, at its option, any part found to be defective within the specified warranty period.

#### **STANDARD PRODUCT WARRANTY PERIOD**

##### **One (1) Year Limited Parts only**

The warranty period begins upon the earlier of the date between proof of installation or 90 days after Invoice date or 90 days after shipping date.

No other Warranty terms are valid unless agreed and authorized by STAR, APW WYOTT, BAKERS PRIDE, LANG, MAGIKITCH'N, TOASTMASTER, WELLS

Any labor expense or part failure incurred after the warranty period will be the responsibility of the end user.

#### **WARRANTY EXCLUSIONS**

##### **THE FOLLOWING WILL NOT BE COVERED UNDER WARRANTY.**

STAR, APW WYOTT, BAKERS PRIDE, LANG, MAGIKITCH'N, TOASTMASTER, WELLS sole obligation under this warranty are limited to either repair or replacement parts, subject to the additional limitations detailed below. This warranty neither assumes nor authorizes any person to assume obligations other than those expressly covered by this warranty.

- Any product which has not been used, maintained, or installed in accordance with the directions published in the appropriate installation sheet and/or owner's manual, including incorrect gas or electrical connection. STAR, APW WYOTT, BAKERS PRIDE, LANG, MAGIKITCH'N, TOASTMASTER, WELLS are not liable for any unit which has been mishandled, abused, misapplied, subjected to harsh chemicals, modified by unauthorized personnel, damaged by flood, fire, or other acts of nature [or God], or which have an altered or missing serial number.
- Installation, labor, and job checkouts, calibration of heat controls, air and gas burner/bypass/pilot adjustments, gas or electrical system checks, voltage and phase conversions, cleaning of equipment, or seasoning of surfaces.
- Replacement of fuses or resetting of circuit breakers, safety controls, or reset buttons.
- Replacement of broken or damaged glass components, quartz heating elements, and light bulbs.
- Labor charges for all removable and consumable parts.
- Any labor charges incurred by delays, waiting time, or operating restrictions that hinder a service technician's ability to perform service.

*International Warranty continued on next page*

# INTERNATIONAL WARRANTY

*International Warranty continued from previous page*

- Replacement of parts that fail or are damaged due to normal wear or labor for replacement of parts that can be replaced during a daily cleaning routine, such as but not limited to silicone belts, PTFE non-stick sheets, control labels, knobs, bulbs, fuses, quartz heating elements, baskets, racks, and grease drawers.
- Any economic loss of business or profits
- Non-OEM parts. Use of non-OEM parts without STAR, APW WYOTT, BAKERS PRIDE, LANG, MAGIKITCH'N, TOASTMASTER, WELLS 's approval will void the warranty.

## CONTACT

[International@partstown.com](mailto:International@partstown.com)

[www.partstown.com](http://www.partstown.com)

Phone: +1-630-866-4385 during normal Business Hours, 8:30 am to 4:30 pm, US Central Standard Time (CST)

In all correspondence provide:

- Serial number - **mandatory**
- Model number/Brand name
- Sales Acknowledgment/Order Confirmation's reference/number, if available
- Include Site's voltage or gas type
- Location/Company's name
- Buyer/Dealer/Distributor/Vendor/Service provider info, if available



# STAR 100 CONTEST

**WHO HAS THE  
OLDEST PIECE OF  
STAR EQUIPMENT  
STILL IN USE?**



**We've launched a contest to find out...**

in honor of Star's 100<sup>th</sup> Birthday, we're holding a contest

the contest

**Find the oldest piece of Star equipment  
still in use at a foodservice operation**

the prize

**Enter to win  
\$1,921 + a trip to party in Nashville  
a tour of our Star plant  
January 2022**

\$1,921 + TRIP prize to  
**SUBMITTING  
DEALER**

\$1,921 + TRIP prize to  
**UNIT OPERATOR**

TRIP prize to associated  
**SALES REP**



how to enter

**ENTER TODAY** VISIT:  
**STAR-MFG.COM/100YEARS**

FOR FULL CONTEST RULES, GO TO  
**STAR-MFG.COM/100 YEARS**

the deadline

**submit info & photos by  
October 15, 2021**

<https://star-mfg.com/product/pro-max-panini-grills-with-torsion-spring-hinge/>

# INFORMATION

**FOR AUTHORIZED DEALERS - TERMS** are net 30, with approved credit. Products are shipped FOB Smithville, Tennessee.

**RETURNS** - Return Material Authorization (RMA) requests must be submitted within 30 days from date of invoice. Prior authorization must be received in order to return merchandise. Approved returned goods must be returned prepaid. In all cases, Star Brands will refuse any returned goods that do not have prior Star Brands approval and therefore, do not bear a Star Brands Return Material Authorization (RMA) number. Goods must be returned either in the original Star Brands unopened box or returned unused and repacked in the original Star Brands box using original Star Brands packing materials. Credit will be issued for returned product less restock. Returns are subject to a 35% restocking charge. All authorized returns will be paid by credit memo. Refurbishing, if necessary, will be an additional charge and will be deducted from any credit that may be allowed. Items not stocked, specially configured or built to order do not qualify for return. Any specials that are authorized for return, may be subject for a fee beyond the standard restocking fee. Returns must be received at the assigned return address within thirty (30) days from authorization date. Goods returned after this period may be refused. Star-Holman-Toastmaster reserves the right to refuse or charge a 45% restocking fee on equipment returned without prior authorization.

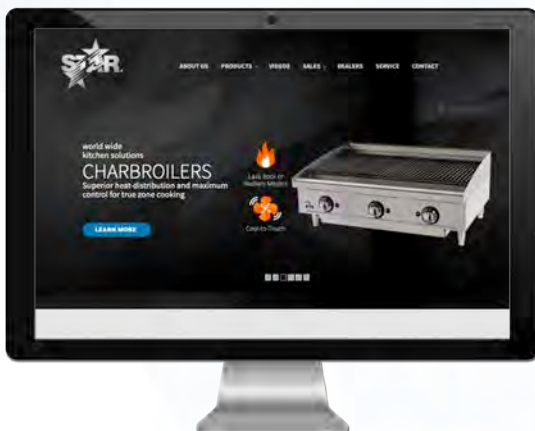
**TITLE** passes to the consignee when merchandise is accepted by the carrier, and thereafter travels at the risk of the purchaser. FOB Factory.

**SUBSTITUTIONS** in material or design will be made as needed, and may be done without notification when necessary.

**PLEASE SPECIFY** (a) finish, (b) type of gas, (c) BTU content, (d) altitude (where applicable), or (e) voltage, (f) phase and (g) cycle when ordering.

**PRICES** Please contact the factory or one of its export agents for quotations on merchandise to be shipped into other areas. All prices are in U.S. dollars. All prices are subject to change without prior notice.

**START UP** This is the initial uncrating and set up of the equipment which is not covered under the Star warranty. This will include piping, electrical and gas connections. This also includes the first "turn on and check" of any gas or electric equipment.



To learn more about our wide array of Commercial Kitchen Equipment, or for a complete listing of Sales Representative & Service Agencies, visit us at

**Star-Mfg.com**

**Star**  
265 Hobson Street  
Smithville, Tennessee 37166

**CUSTOMER SERVICE**

phone: 800-264-7827 option 1

email: [orders@star-mfg.com](mailto:orders@star-mfg.com)

**TECHNICAL SERVICE**

phone: 800-264-7827 option 2

email: [techservice@partstown.com](mailto:techservice@partstown.com)