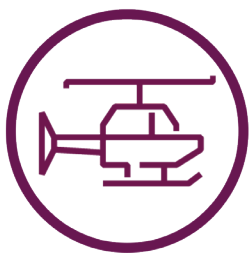


**MAKING
COMPLEX
EASY**



SARMAP

Search & Rescue Response Planning Software

RELEASE NOTES
VERSION: 7.2.0

rps



We have deep expertise in things that matter and we are easy to work with.

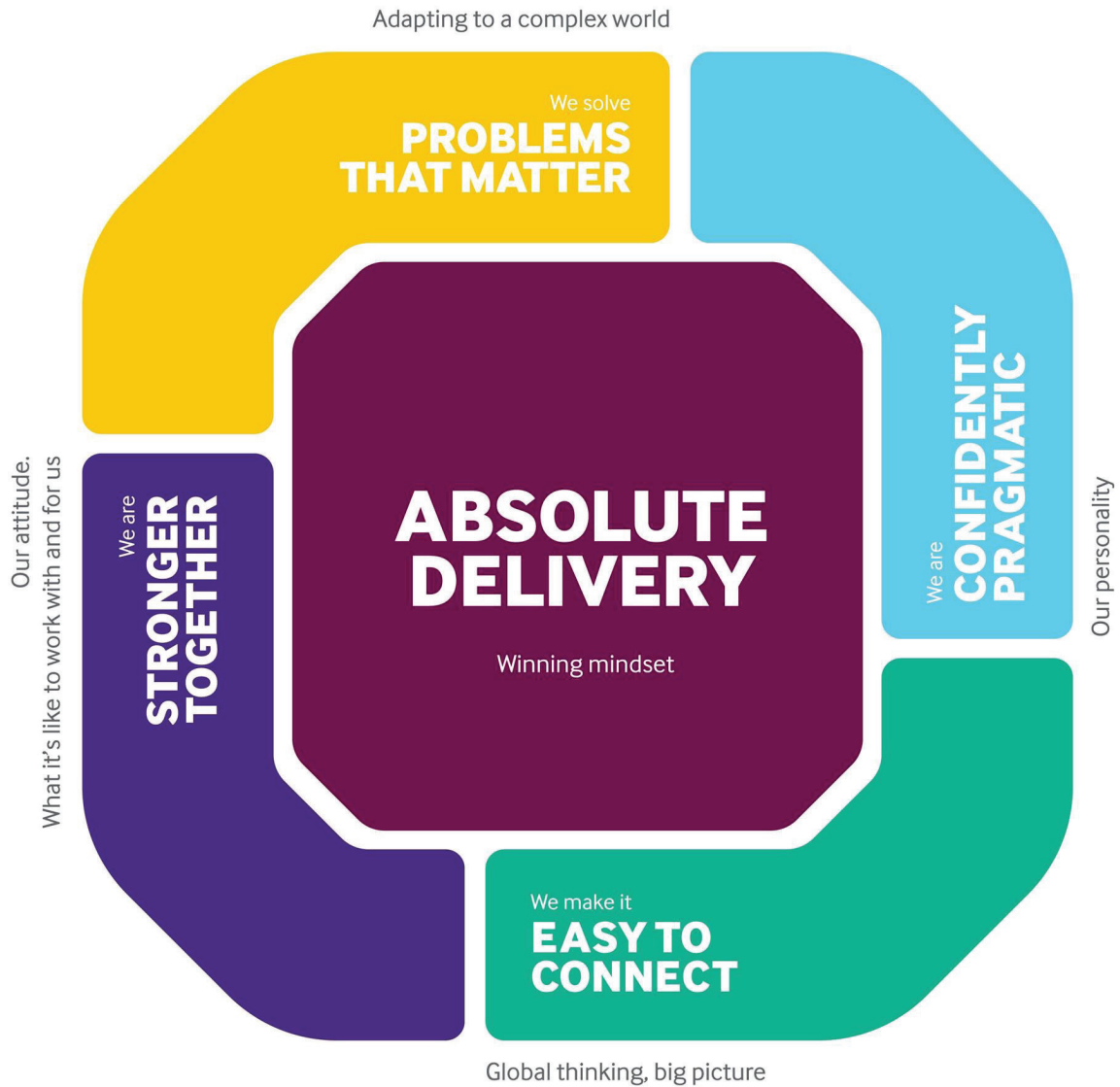
Our clients trust us and we are respected for our creative thinking.

Together we build strong relationships by repeatedly delivering on our promise.

MAKING COMPLEX EASY



RPS PROMISES ABSOLUTE DELIVERY:



Prepared by:

RPS Ocean Science

55 Village Square Drive
South Kingstown RI 02879, USA

T +1 401 789 6224

E MapSupport@rpsgroup.com

Contents

1	INTRODUCTION.....	1
1.1	Operating System Compatibility	1
2	SARMAP V7.1.0 USER INTERFACE UPDATES	2
2.1	Resolved Interface Bugs.....	2
2.2	New Feature Additions to the Interface	4

Figures

Figure 1.	Endurance tab Search Speed updates based off Search tab	2
Figure 2.	Longitude and Latitude displayed as tick marks	5
Figure 3.	Wind Speed vs. Elevation data pulled from EDS.....	6
Figure 4.	Add Case Name	7
Figure 5.	Delete Case Name	8
Figure 6.	License Administration	9

1 INTRODUCTION

Since 1979, RPS has been researching drifting objects, oils, and chemicals at sea. As part of that we developed a search and rescue operational tool called SARMAP and this tool is now used in many countries including Spain, Netherlands, Australia, Korea, New Zealand, Ireland, Argentina, Brazil, Ireland, Isle of Man, U.S.A and others. SARMAP is a commercial tool and is available as a stand-alone tool.

Version 7.2.0 of SARMAP includes many enhancements and added features to help improve search and rescue response. Enhancements were made to both the model and the user interface. This document describes the various new features and bug fixes included in SARMAP v7.2.0.

1.1 Operating System Compatibility

Version 7 (and newer) of the RPS MAP applications, OILMAP, SARMAP, and CHEMMAP, are supported on the following Microsoft Windows platforms: Windows 10, 8, 7, Windows Server 2012 and 2016. Microsoft Azure, and Amazon Web Services.



2 SARMAP V7.2.0 USER INTERFACE UPDATES

2.1 Resolved Interface Bugs/Issues

The following bugs have been reported, logged, and **fixed**:

1. The SRU search speed in the Endurance tab now updates based off the search speed from the Search tab. This is true for both airplane/helicopter search units for marine searches and light/heavy aircraft for land searches.

The figure displays two side-by-side screenshots of the SARMAP V7.2.0 Endurance tab interface. The left screenshot shows the 'Search' tab selected, with 'Search Speed (knots)' set to 150. The right screenshot shows the 'Endurance' tab selected, where 'SRU Search Speed (knots)' is updated to 150.00, matching the value in the Search tab. Both screenshots show various search parameters like Search Unit (Airplane), Search Object (Person in Water), and coordinates.

Figure 1. Endurance tab Search Speed updates based off Search tab

2. When deploying a 'Boat' as an SRU, Search speed is now saved in the Search tab of the deployment form.
3. Removed false error messages when saving search patterns from SRU.
4. SRU deployment form now saves when you switch search unit and close the form.
5. Resolved issue with creation of User-Defined SAR Area (rectangle, polygon, and manual entry),
6. Now allowing for the adjustment of the time slider when the SRU deployment form is open to dictate when the SRU will be deployed.
7. When undeploying SRU, the search area now deletes from map.
8. Fixed distance calculation when changing the departure and arrival locations of an SRU.
9. Fixed errors with Live SRU forms.
10. Effective On-Scene Endurance in SRU form is now text field users can edit.
11. Stopped software crash when attempting to subdivide a user-defined search area.
12. Fixed to allow spaces in 'Description' in the Model Input form (now creates XML report for cases with spaces in the Description).
13. Incomplete sentence in Parameters tab (Model Input form) now complete.
14. Two tracklines are now drawn when running a scenario with two accident sites.

15. Stopped software crash when editing the speed of a trackline scenario and re-running.
16. Fixed issue with trackline time labels.
17. Correction to justification of Point layer name.
18. Correction to position of Polygon layer name.
19. Start and end time of time slider tool form now matches the start and end time of your scenario.
20. Fixed issue with Timeslider controls preventing display of data.
21. ABCD box no longer increases when particles are stuck on land.
22. Fixed mismatch between search patterns and ABCD box.
23. During IAMSAR scenario, the center point and trackline are now calculated as center point of ABCD box.
24. Moved ABCD box to lower left window of the map instead of upper right.
25. Updated to MSXML v6.0.
26. The components constrained Downwind and Crosswind Leeway have been updated for PIW with type I PFD and in a Survival Suit, besides from the average PIW with PFD and PIW without PFD.
27. Average leeway date and divergence angles for PIWs (2018) has been updated for the IAMSAR calculations.
28. The PIW Type I, II and III titles have been modified as they were mistaken on SARMAP.
29. New SAR objects have been included with their values corrected: Canoe, Kayak and Stand Up Paddleboard.

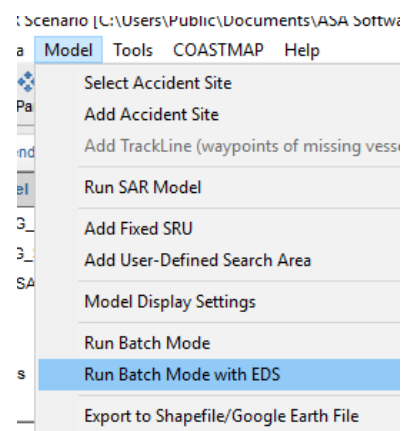
2.2 New Feature Additions to the Interface

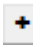
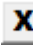
2.2.1 Scenario Batch Mode with EDS

It is now possible to run multiple duplicate scenarios in SARMAP using a variety of available datasets from the Environmental Data Server (EDS). Users can simply create a scenario with the desired inputs and use it as the parent case. This scenario is created in the usual manner by going to **File -> New Scenario**.

Once the base case is created the user goes to **Model -> Run Batch Mode with EDS**.

The Batch Input Mode with EDS input form opens.

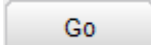


The user can now create multiple scenarios using the same inputs from the parent scenario and select a variety of wind and current data sources from EDS to compare the trajectories created. The user simply clicks the plus button  to add an additional scenario or the delete button  to remove a scenario.

The dialog box 'Batch Input Mode With EDS' contains a 'Parent Scenario Name' dropdown and a 'New Scenario List' table. The table has columns for 'Scenario Name', 'Winds', and 'Currents'. It lists four scenarios, each with a plus button to add and a delete button (X) to remove.

Scenario Name	Winds	Currents		
Parent Scenario Name_1	GFS (NCEP)	Copernicus, GLOBAL	+	X
Parent Scenario Name_2	GFS (NCEP)	Global HYCOM (Navy) Curr	+	X
Parent Scenario Name_3	Met Office Global Atmosph	Copernicus, GLOBAL	+	X
Parent Scenario Name_4	Met Office Global Atmosph	Global HYCOM (Navy) Curr	+	X

At the bottom of the dialog are 'Go' and 'Close' buttons.

From the dropdowns for winds and current the user can select from the available options and once all scenarios have been setup the user clicks  to sequentially run the desired scenarios. All outputs will be added to the scenario data store and can be accessed using File -> Open Scenario. Multiple scenarios may also be displayed using File -> Add Scenario.

2.2.2 Map Coordinate Markings Display Update

SARMAP now allows you to view the map with latitude and longitude displayed as tick marks rather than gridded. To enable this feature right click on the map and choose 'Map Display Settings'. A settings box will appear and under Viewing Options check 'Display Tick Marks Only.'

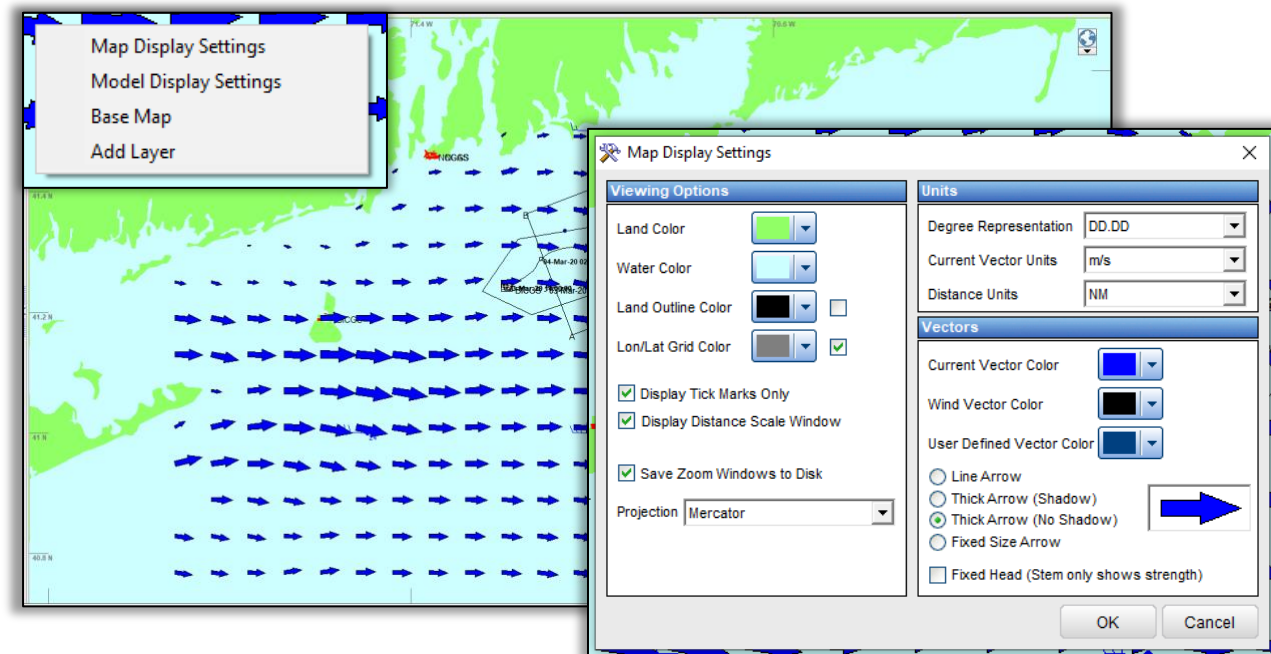


Figure 2. Longitude and Latitude displayed as tick marks

2.2.3 Aeronautical Model 3D EDS Winds

A new feature to SARMAP is 3D EDS winds. In the Run SAR Model box (Ctrl + R), navigate to the Object tab. Under Site Details, click the button next to Wind Speed vs Elevation and a new box will appear. In this new box, there are three columns: elevation, wind direction, and wind speed. Below these columns there is a Get Data button at the bottom of the box that pulls EDS data for the specified site from the GFS (NCEP) winds source. An upgraded EDS subscription is required for this feature. Please contact us at MapSupport@rpsgroup.com to enable this feature.

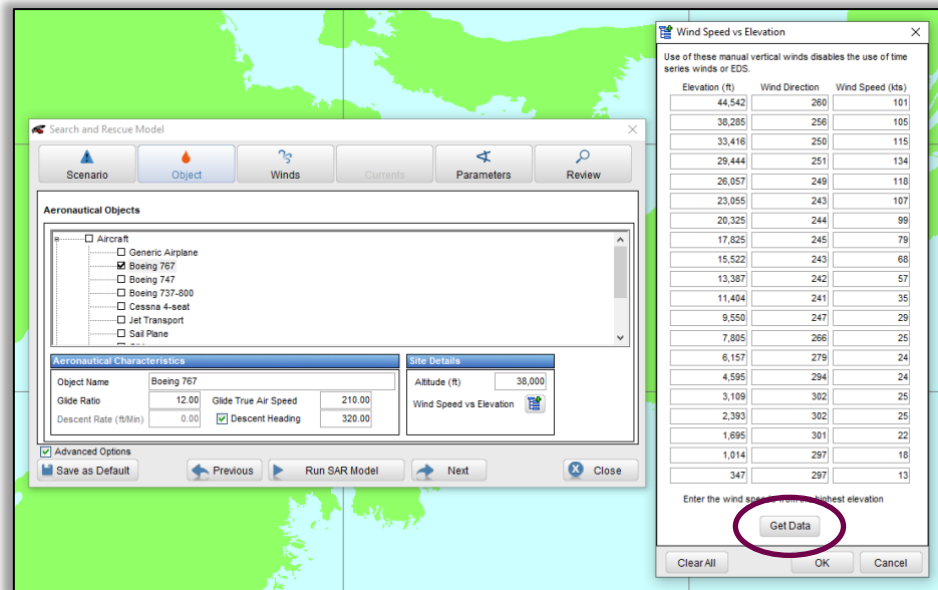


Figure 3. Wind Speed vs. Elevation data pulled from EDS

2.2.4 Introduction of Cases

There is now a new addition of case name when creating a new scenario. You have the option to assign a case name when creating a new scenario in the SARMAP Scenario Setup box. When opening an existing scenario, there is the option to filter by case name in the Open SARMAP Scenario box. The option to delete a case name is also available. To do so, go to Delete Scenario Files in the drop menu under the Tools tab of the interface. Choose SARMAP Cases in File Type, then choose a case to delete from the list.

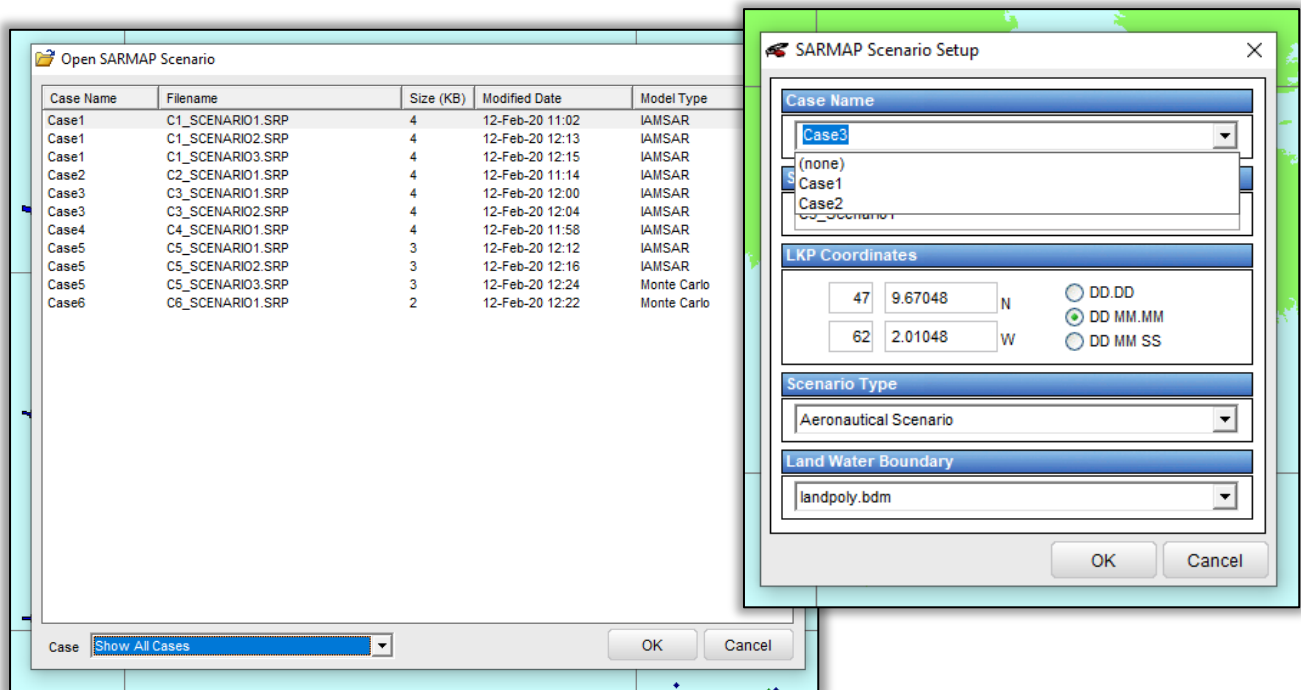


Figure 4. Add Case Name

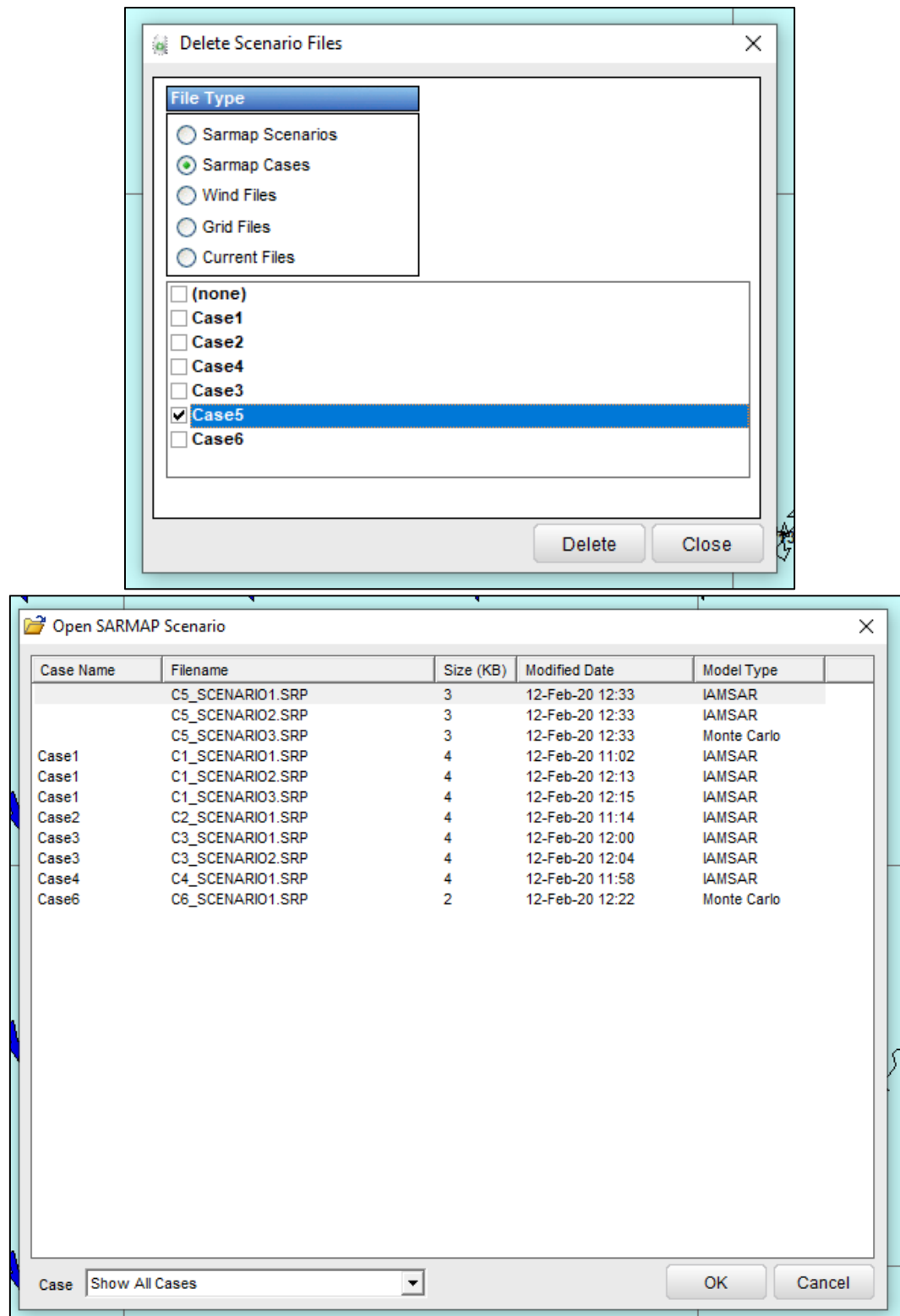


Figure 5. Delete Case Name

2.2.5 Help Menu updates

By clicking on Help tab in the top file menu toolbar, you can now reach the License Administration and the Maintenance Site by clicking on either in the dropdown menu.

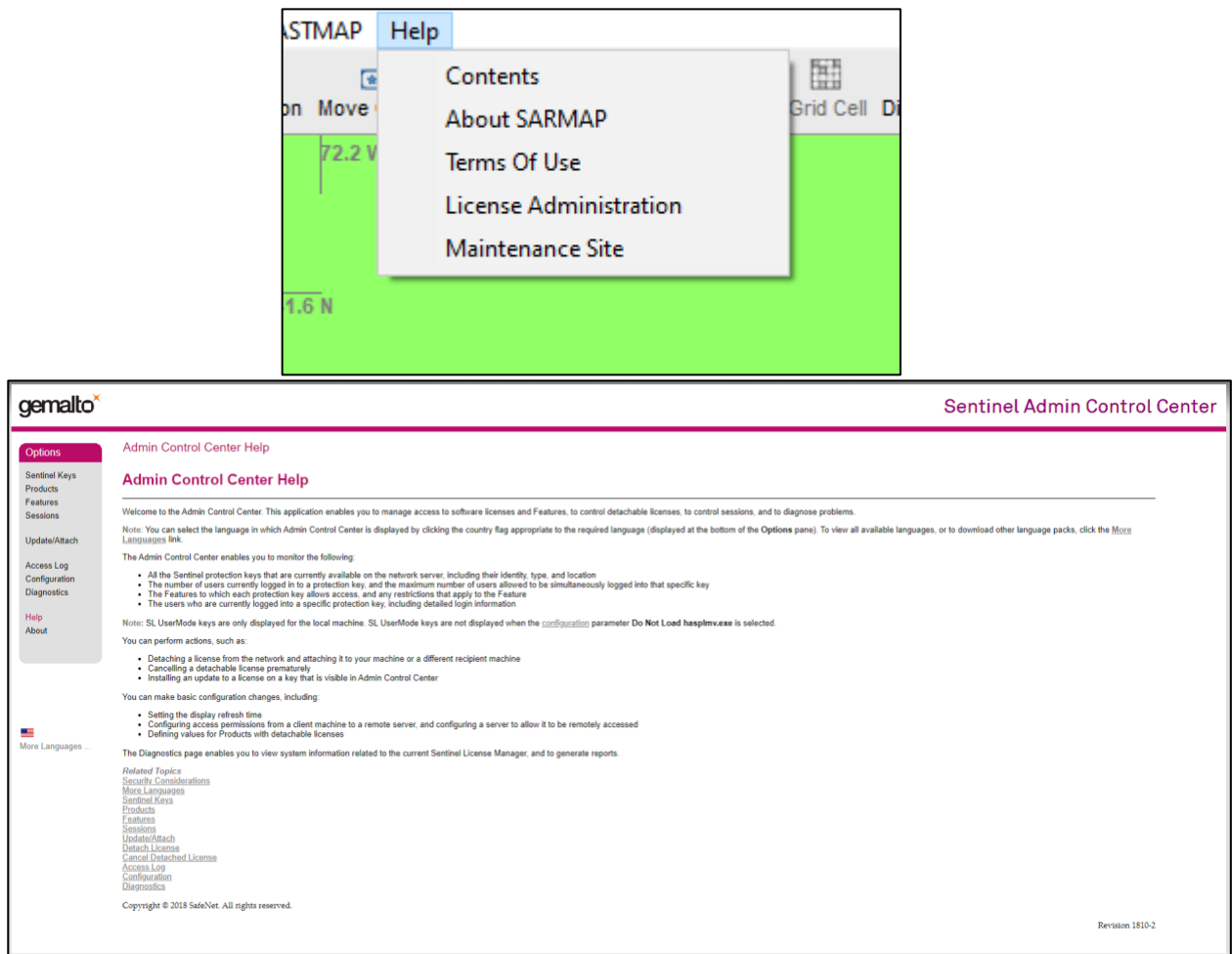


Figure 6. License Administration