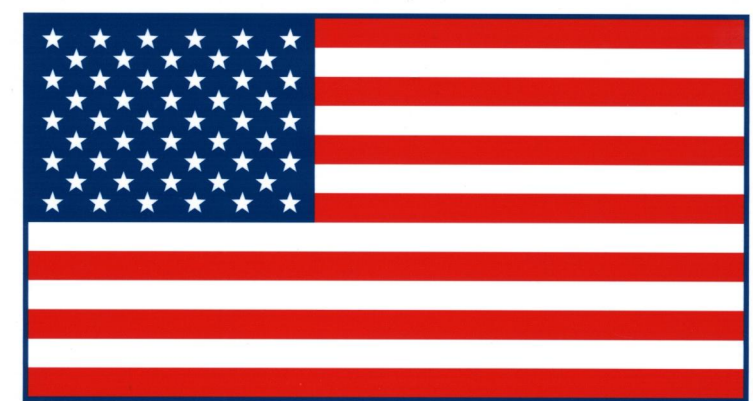
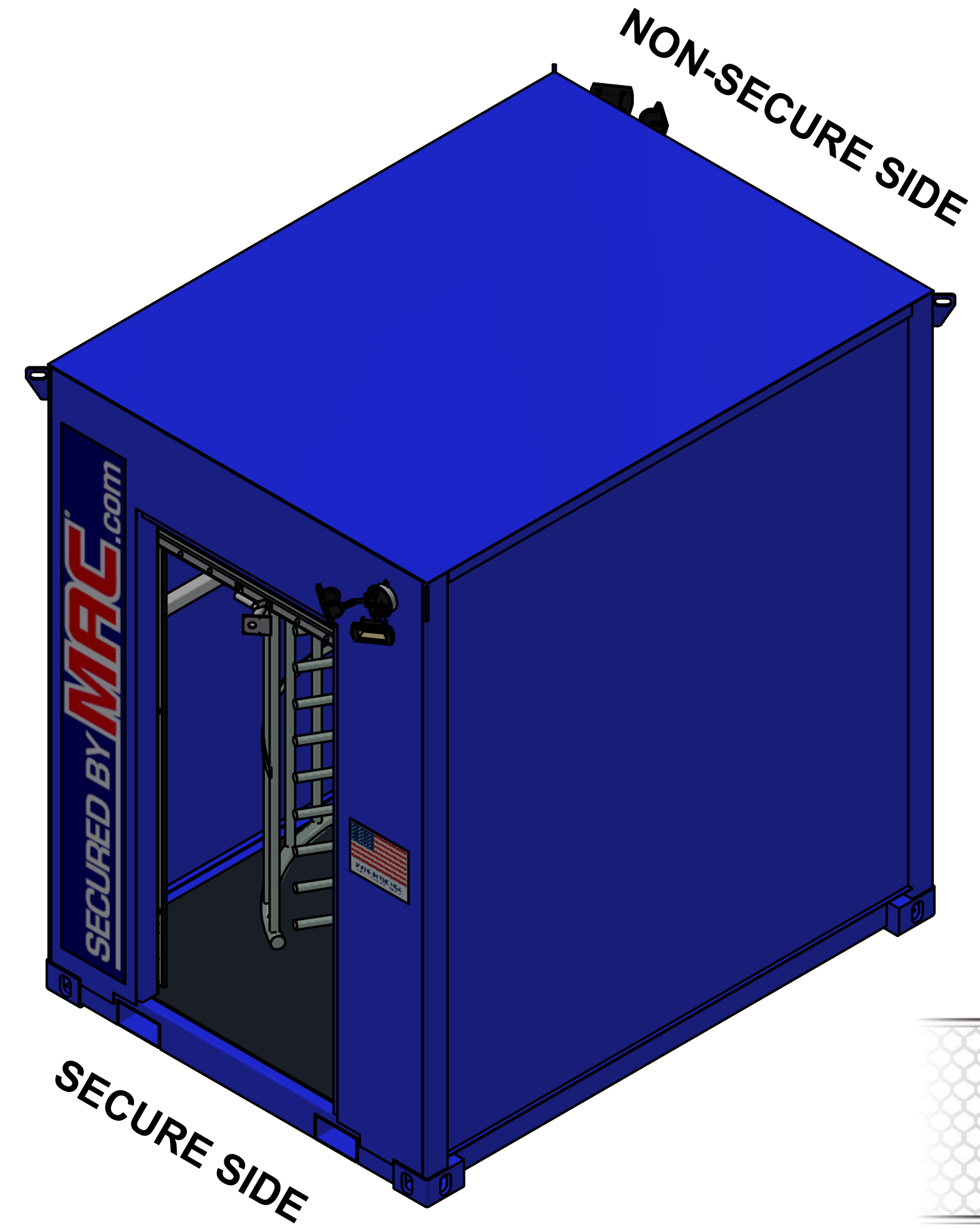
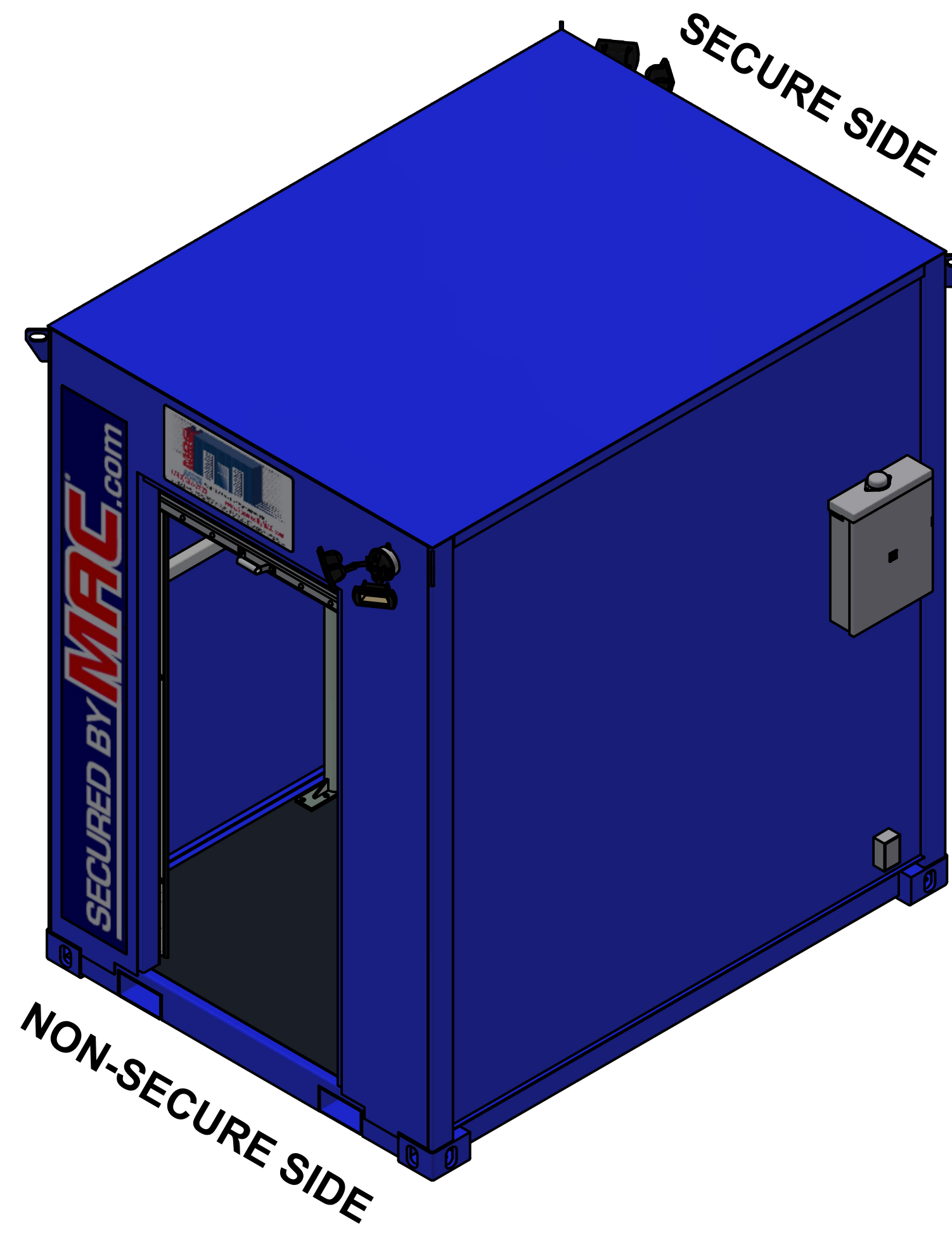
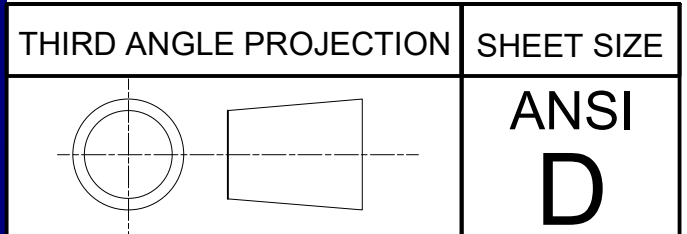


SECURED BY **MAC**.com



MADE IN THE USA
 IRONTON, OH | WORTHINGTON, KY | WURLAND, KY



ISOMETRIC SHEETS - OVERALL 1

THIS MSSSI PRODUCT IS COVERED BY ONE OR MORE OF THE FOLLOWING PATENTS:
 US 9,404,278; US 9,051,748; US 8,671,624; US 8,015,754; US 7,762,025; 7,823,338;
 CA 2,587,968; CA 2,682,764; EP 1812666; DZ 5173; EG 25627; NG RPNG/C/C2007/737; EP 2137356

THIS DOCUMENT CONTAINS INFORMATION THAT IS CONFIDENTIAL AND PROPRIETARY TO MODULAR SECURITY SYSTEMS, INC. THIS DOCUMENT IS FURNISHED ON THE UNDERSTANDING THAT THE DOCUMENT AND THE INFORMATION IT CONTAINS WILL NOT BE REPRODUCED OR DISCLOSED TO OTHERS WITHOUT THE WRITTEN CONSENT OF MODULAR SECURITY SYSTEMS, INC. OR USED FOR ANY PURPOSE OTHER THAN CONDUCTING BUSINESS WITH MODULAR SECURITY SYSTEMS, INC., AND WILL BE RETURNED AND ALL FURTHER USE DISCONTINUED UPON REQUEST BY MODULAR SECURITY SYSTEMS, INC. COPYRIGHT MODULAR SECURITY SYSTEMS, INC. FIRST YEAR COPYRIGHT IS FIRST YEAR INDICATED ON THIS DOCUMENT. ALL RIGHTS RESERVED.



PROJECT NO	M19-162
CUSTOMER	MSSI STANDARDS
PROJECT	MAC1

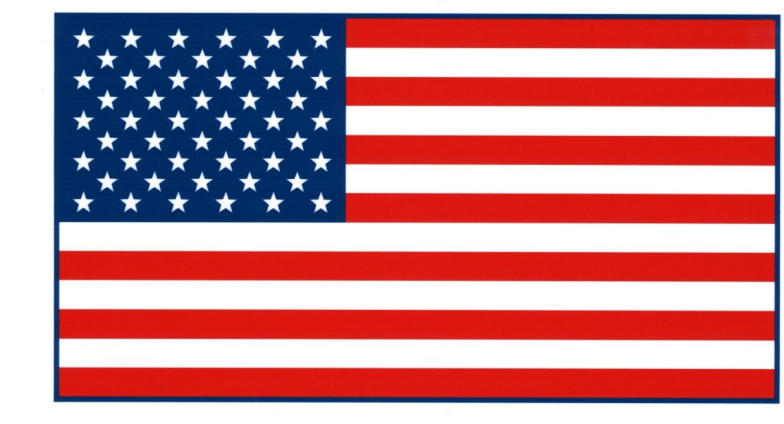
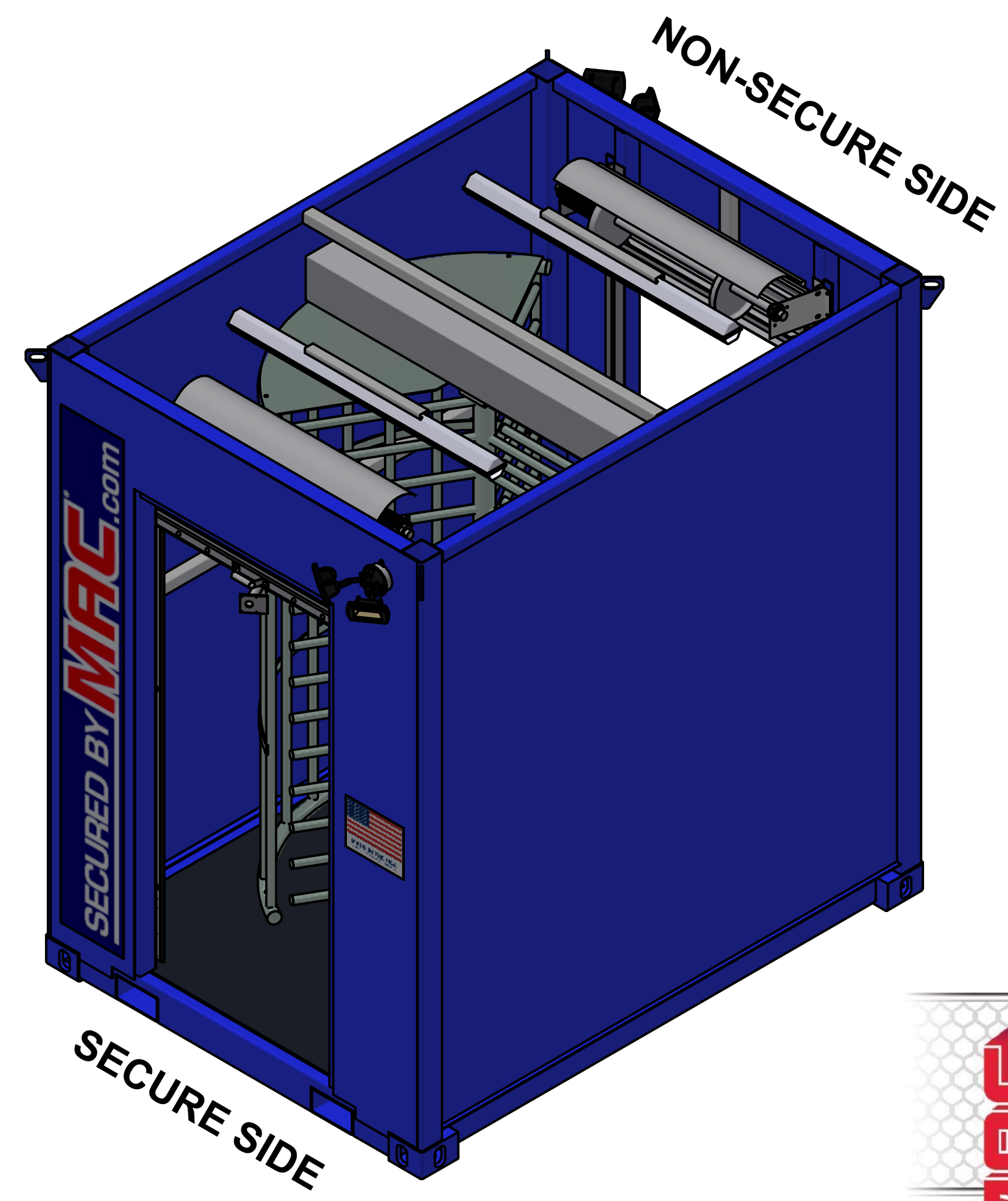
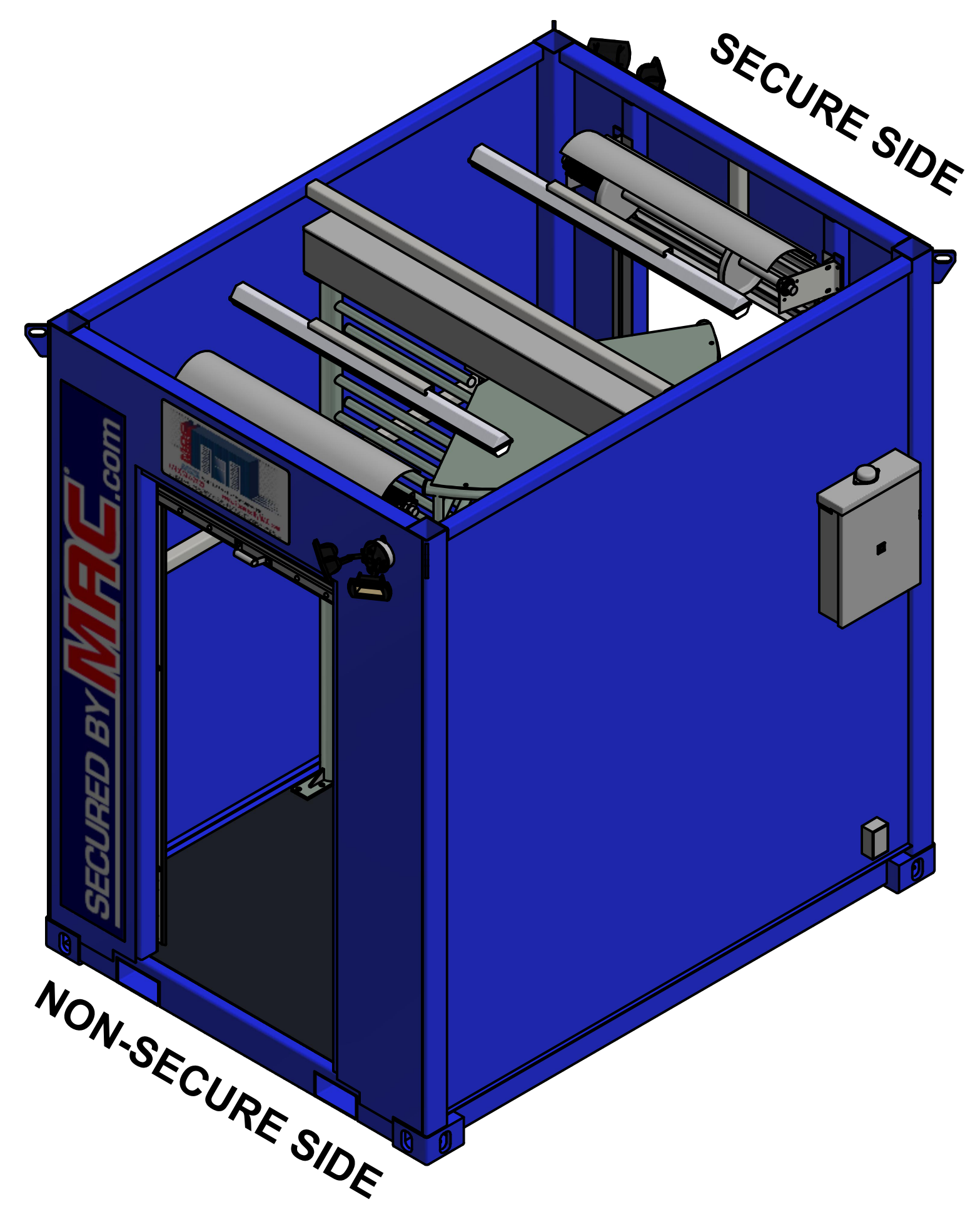
NO.	DATE	BY	DESCRIPTION	REVISIONS
C	12/21/2021	TDS	CUSTOMER REVISIONS	
B	10/25/2019	WEP	PROCESS REVISION	
A	6/28/2019	NSM	UPDATE PANEL BOARD LAYOUT	
0	6/24/2019	NSM	INITIAL RELEASE	

DRAWN	NSM	DATE	6/19/2019
CHECKED	JES	BY	JES
ENG. APPR.	JES		
SALES APPR.			
MFG. APPR.			
O.A.			
SCALE	N.T.S.		
DWG NO	M19-162-M1XX-0100		

TOLERANCES ON ALL DIMENSIONS UNLESS OTHERWISE NOTED SHALL BE:	
ONE PLACE DECIMAL	± 0.03
TWO PLACE DECIMAL	± 0.005
THREE PLACE DECIMAL	± 0.0005
FRACTIONAL	± 1/16"
ANGULAR	± 1°

1
2
3
4
5
6
7
8
9
10
11
12
13
14
15
16
17
18

SECURED BY **MARC**.com



MADE IN THE USA
 IRONTON, OH | WORTHINGTON, KY | WURLAND, KY

THIRD ANGLE PROJECTION	SHEET SIZE
	ANSI D

ISOMETRIC SHEETS - OVERALL 2

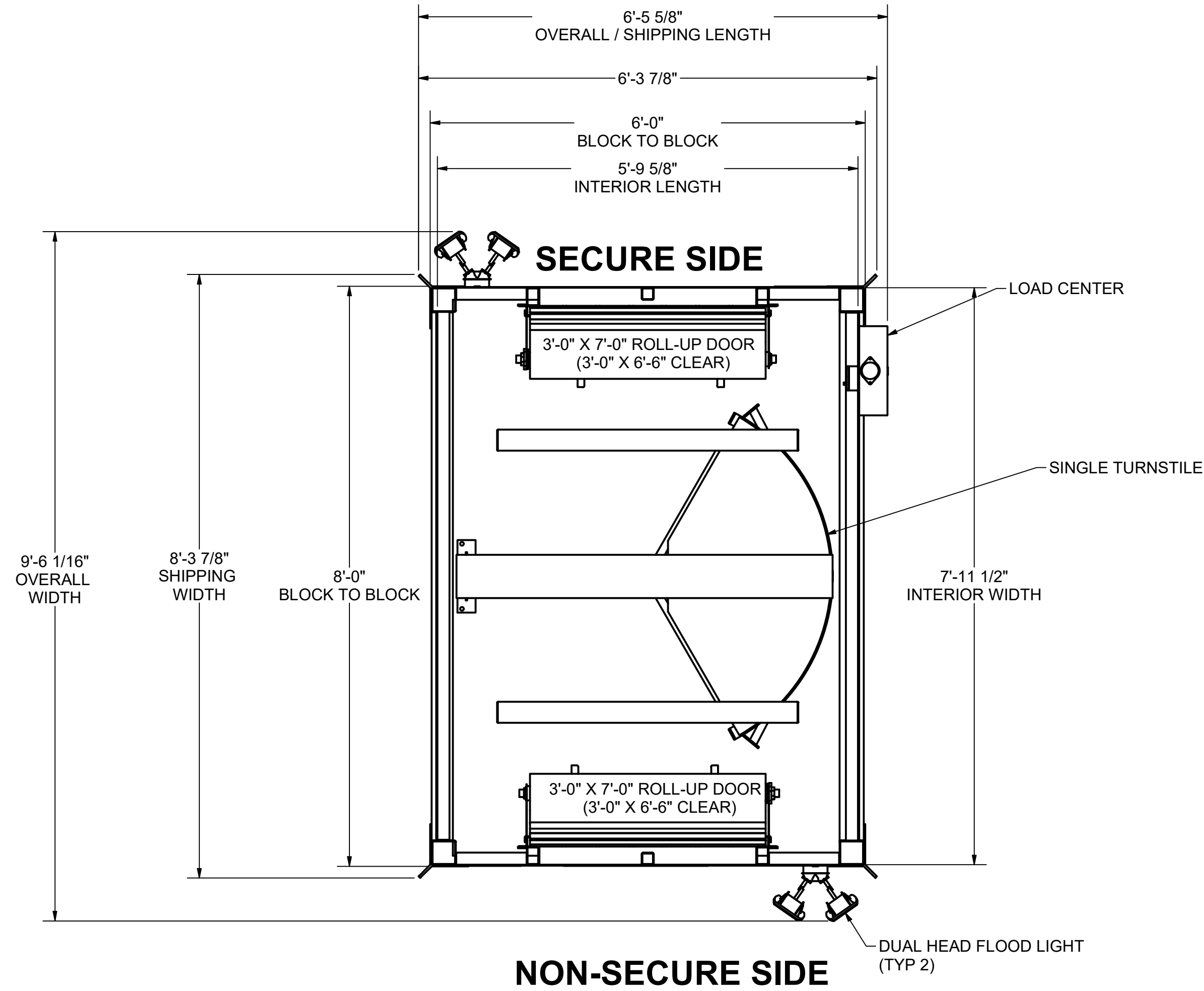


THIS MSSI PRODUCT IS COVERED BY ONE OR MORE OF THE FOLLOWING PATENTS:
 US 9,404,278; US 9,051,748; US 8,671,624; US 8,015,754; US 7,762,025; 7,823,338;
 CA 2,587,968; CA 2,682,764; EP 1812666; DZ 5173; EG 25627; NG RPNG/C/C2007/737; EP 2137356

THIS DOCUMENT CONTAINS INFORMATION THAT IS CONFIDENTIAL AND PROPRIETARY TO MODULAR SECURITY SYSTEMS, INC. THIS DOCUMENT IS FURNISHED ON THE UNDERSTANDING THAT THE DOCUMENT AND THE INFORMATION IT CONTAINS WILL NOT BE REPRODUCED OR DISCLOSED TO OTHERS WITHOUT THE WRITTEN CONSENT OF MODULAR SECURITY SYSTEMS, INC. OR USED FOR ANY PURPOSE OTHER THAN CONDUCTING BUSINESS WITH MODULAR SECURITY SYSTEMS, INC., AND WILL BE RETURNED AND ALL FURTHER USE DISCONTINUED UPON REQUEST BY MODULAR SECURITY SYSTEMS, INC. COPYRIGHT MODULAR SECURITY SYSTEMS, INC. FIRST YEAR COPYRIGHT IS FIRST YEAR INDICATED ON THIS DOCUMENT. ALL RIGHTS RESERVED.

PROJECT NO	M19-162	CUSTOMER	MSSI STANDARDS	PROJECT	MAC1
TITLE	ISOMETRIC SHEETS - OVERALL 2				
NO.	DATE	BY	DESCRIPTION	REVISIONS	
0	6/24/2019	NSM	INITIAL RELEASE		
A	6/28/2019	NSM	UPDATE PANEL BOARD LAYOUT		
B	10/25/2019	WEP	PROCESS REVISION		
C	11/21/2021	TDS	CUSTOMER REVISIONS		
DRAWN	NSM	DATE	6/19/2019	BY	NSM
CHECKED	JES				
ENG. APPR.	JES				
SALES APPR.					
MFG. APPR.					
O.A.					
SCALE	N.T.S.				
DWG NO	M19-162-M1XX-0101				
COMMENTS:	1 THE NUMBER IN THE FINISH SYMBOL IS THE MAXIMUM ACCEPTABLE ROUGHNESS VALUE IN A.A. MICROINCHES. 2 FRACTIONAL ± 1/16" 3 THREE PLACE DECIMAL ± 0.005 4 ONE PLACE DECIMAL ± 0.03 5 OTHERWISE NOTED SHALL BE 6 TOLERANCES ON ALL DIMENSIONS UNLESS				

		FINISH SCHEDULE					
SPACE	MATERIALS	WALLS	CEILING	FLOOR	NOTES		
TURNSTILE BAY	FRAMING	CUSTOM ENCLOSURE	CUSTOM ENCLOSURE	CUSTOM ENCLOSURE	N/A		
	INSULATION	N/A	N/A	N/A	N/A		
	SUBSURFACE	N/A	N/A	N/A	N/A		
	SURFACE	PAINTED STEEL	PAINTED STEEL	SPRAY-ON SKID-RESISTANT	N/A		




GENERAL ARRANGEMENT - PLAN VIEW
SCALE 3/4" = 1'-0"

NO.	DATE	BY	DESCRIPTION
4	6/19/2019	NSM	CUSTOMER REVISIONS
3		JES	PROCESS REVISION
2		JES	UPDATE PANEL BOARD LAYOUT
1			INITIAL RELEASE

DRAWN	CHECKED	ENG. APPR.	SALES APPR.	MFG. APPR.	Q.A.	SCALE	DWG NO.
						3/4" = 1'-0"	M19-162-M1XX-0200

NO.	DATE	BY	DESCRIPTION
REVISIONS			
TITLE: GENERAL ARRANGEMENT - PLAN VIEW			



MSSI
Modular Security Systems

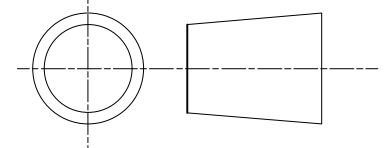
CUSTOMER
MSSI STANDARDS

PROJECT NO
M19-162

PROJECT
MAC1

THIS MSSI PRODUCT IS COVERED BY ONE OR MORE OF THE FOLLOWING PATENTS:
 US 9,404,278; US 9,051,748; US 8,671,624; US 8,015,754; US 7,762,025; 7,823,338;
 CA 2,587,968; CA 2,682,764; EP 1812666; DZ 5173; EG 25627; NG RPNG/C/C2007/737; EP 2137356

THIS DOCUMENT CONTAINS INFORMATION THAT IS CONFIDENTIAL AND PROPRIETARY TO MODULAR SECURITY SYSTEMS, INC. THIS DOCUMENT IS FURNISHED ON THE UNDERSTANDING THAT THE DOCUMENT AND THE INFORMATION IT CONTAINS WILL NOT BE REPRODUCED OR DISCLOSED TO OTHERS WITHOUT THE WRITTEN CONSENT OF MODULAR SECURITY SYSTEMS, INC. OR USED FOR ANY PURPOSE OTHER THAN CONDUCTING BUSINESS WITH MODULAR SECURITY SYSTEMS, INC., AND WILL BE RETURNED AND ALL FURTHER USE DISCONTINUED UPON REQUEST BY MODULAR SECURITY SYSTEMS, INC. COPYRIGHT MODULAR SECURITY SYSTEMS, INC. FIRST YEAR COPYRIGHT IS FIRST YEAR INDICATED ON THIS DOCUMENT. ALL RIGHTS RESERVED.

THIRD ANGLE PROJECTION	SHEET SIZE
	ANSI D

TOLERANCES ON ALL DIMENSIONS UNLESS OTHERWISE NOTED SHALL BE:
 ONE PLACE DECIMAL ± 0.03
 THREE PLACE DECIMAL ± 0.005
 ANGULAR ± 1°

FINISH ALL SURFACES UNLESS OTHERWISE SPECIFIED.
 BREAK ALL SHARP EDGES UNLESS OTHERWISE SPECIFIED.

THE NUMBER IN THE FINISH SYMBOL IS THE MAXIMUM ACCEPTABLE ROUGHNESS VALUE IN A.A. MICROINCHES.