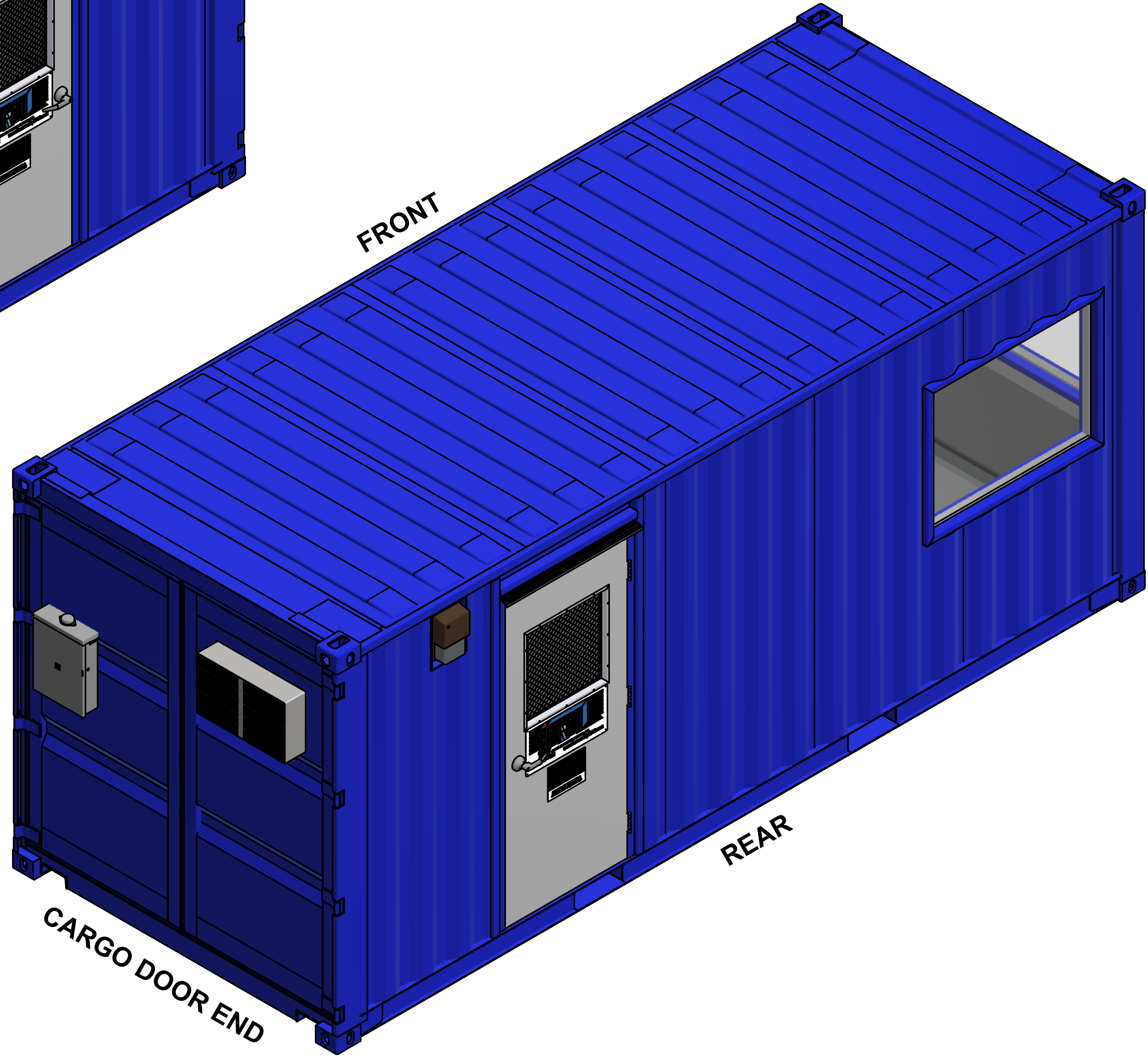
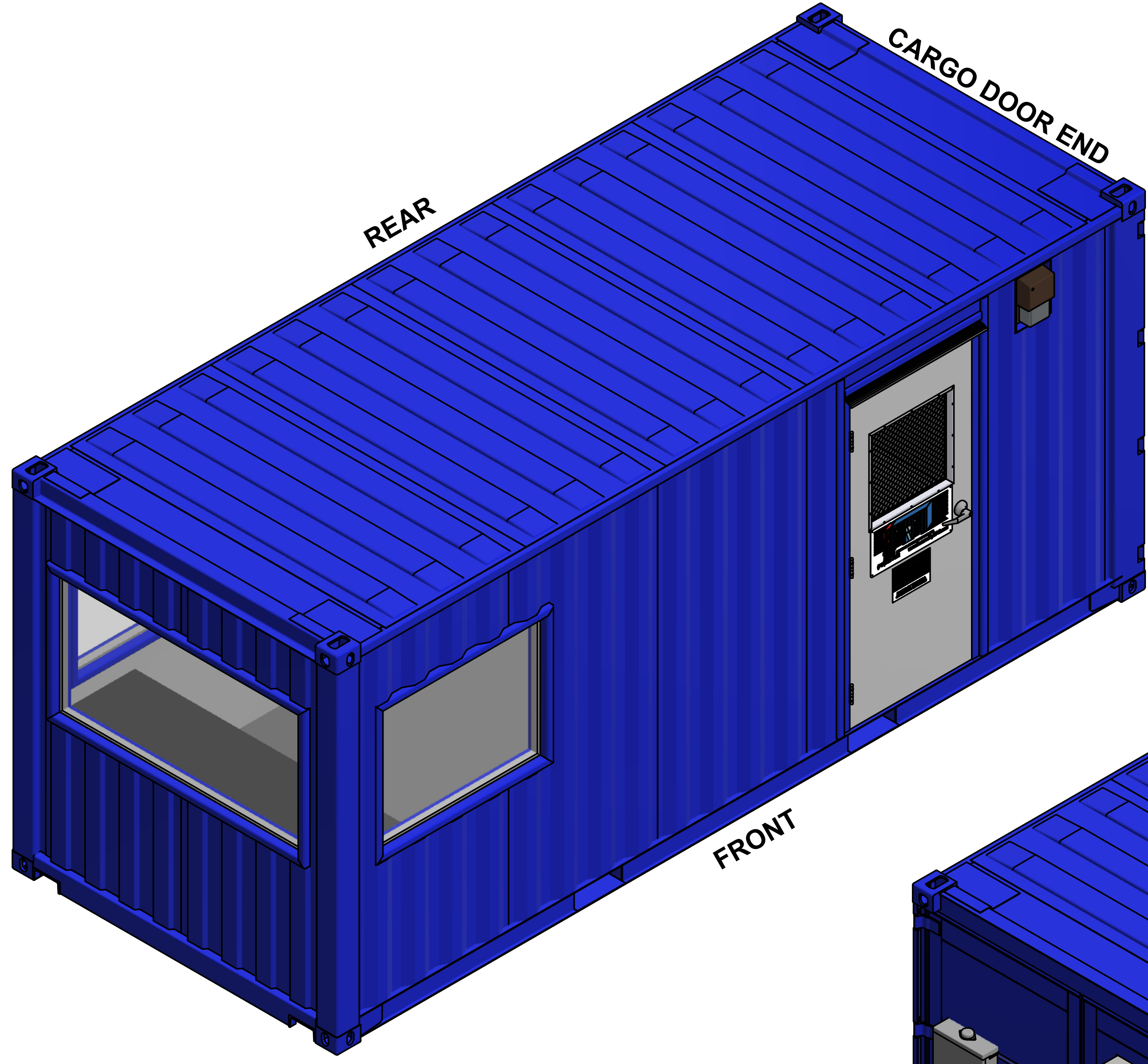
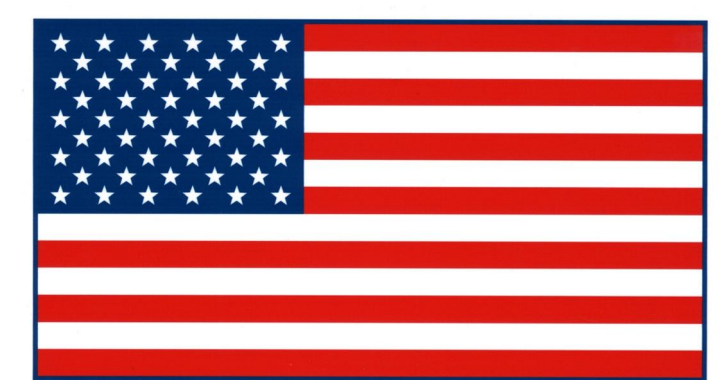


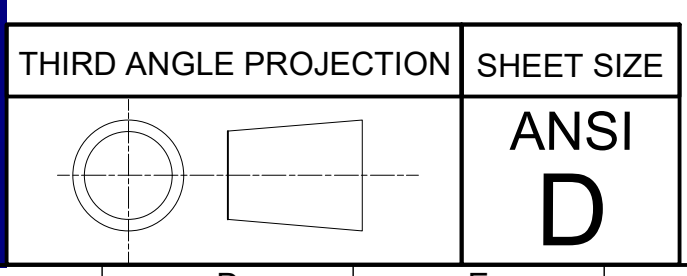
SECURED BY **MFC**.com



ISOMETRIC SHEETS - OVERALL 1



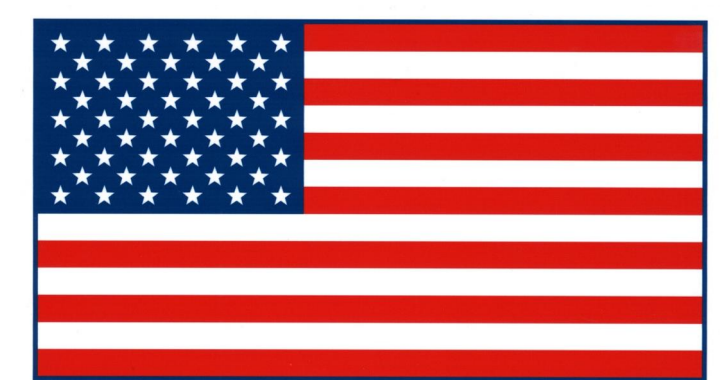
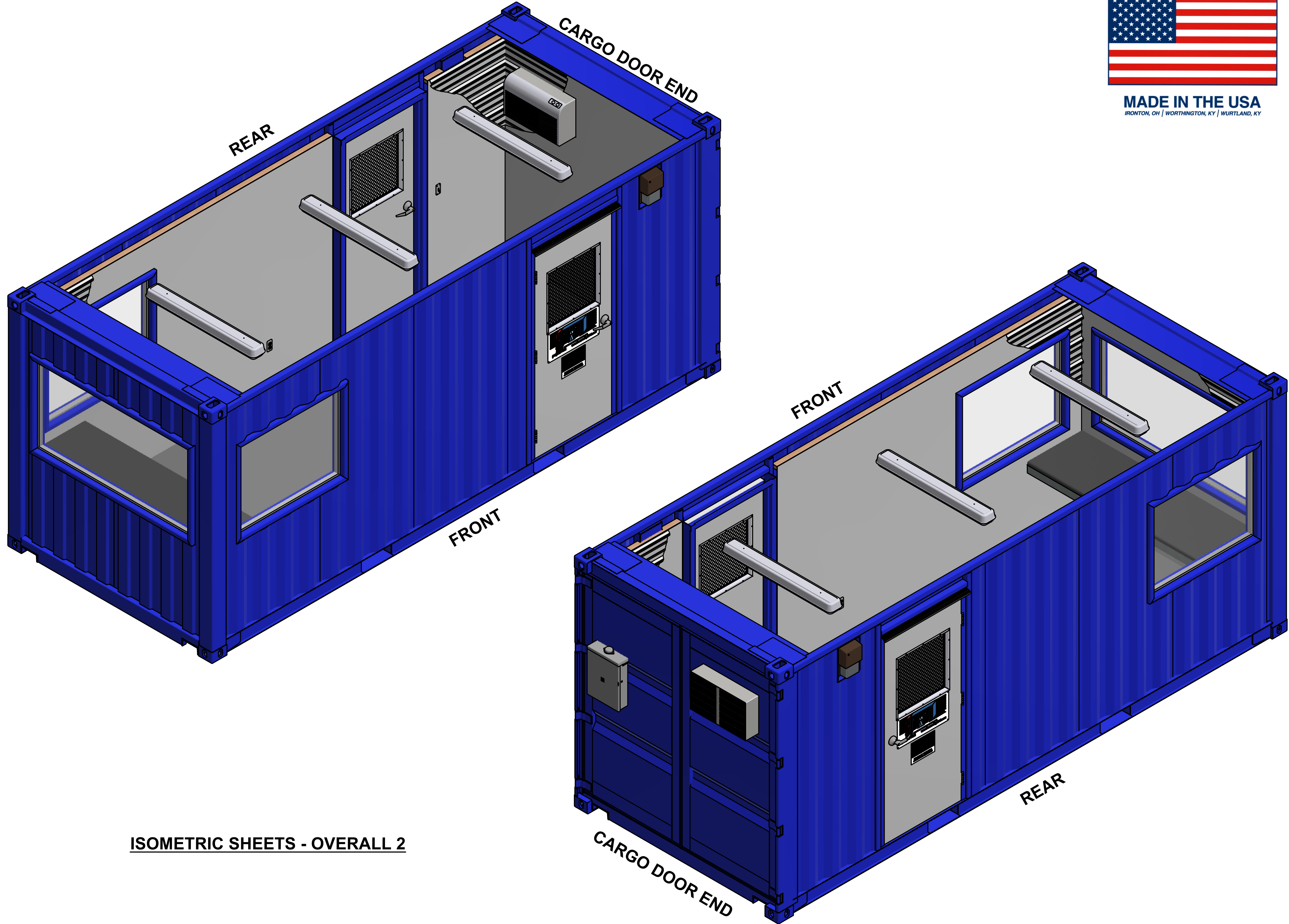
MADE IN THE USA
 IRONTON, OH | WORTHINGTON, KY | WURLAND, KY



THIS DOCUMENT CONTAINS INFORMATION THAT IS CONFIDENTIAL AND PROPRIETARY TO MODULAR SECURITY SYSTEMS, INC. THIS DOCUMENT IS FURNISHED ON THE UNDERSTANDING THAT THE DOCUMENT AND THE INFORMATION IT CONTAINS WILL NOT BE REPRODUCED OR DISCLOSED TO OTHERS WITHOUT THE WRITTEN CONSENT OF MODULAR SECURITY SYSTEMS, INC. OR USED FOR ANY PURPOSE OTHER THAN CONDUCTING BUSINESS WITH MODULAR SECURITY SYSTEMS, INC., AND WILL BE RETURNED AND ALL FURTHER USE DISCONTINUED UPON REQUEST BY MODULAR SECURITY SYSTEMS, INC. COPYRIGHT MODULAR SECURITY SYSTEMS, INC. FIRST YEAR COPYRIGHT IS FIRST YEAR INDICATED ON THIS DOCUMENT. ALL RIGHTS RESERVED.

MSSI Modular Security Systems 		PROJECT # M20-401		CUSTOMER PORTSMOUTH PPO		PROJECT 8 X 20 GH	
TITLE ISOMETRIC SHEETS - OVERALL 1		REVISIONS NO. DATE BY DESCRIPTION		DRAWING # M20-401-G82X-0100		COMMENTS: 1 FINISH ALL WELDED SURFACES AND BREAK ALL SHARP EDGES UNLESS OTHERWISE SPECIFIED. 2 THE NUMBER IN THE FINISH SYMBOL IS THE MAXIMUM ACCEPTABLE ROUGHNESS VALUE IN A.A. MICRO-INCHES.	
0 1/17/2021 JOC CUSTOMER REVIEW		1 1/17/2021 JES 1/17/2021		2 1/17/2021 JES 1/17/2021		3 7/22/2020 JOC 7/22/2020	
SALES APPR.		MFG. APPR.		O.A.		SCALE N.T.S.	
NO. DATE BY DESCRIPTION		CHECKED JES 1/17/2021		ENG. APPR. JES 1/17/2021		DATE 7/22/2020	
BY JOC 7/22/2020		DRAWN JOC 7/22/2020		DATE 7/22/2020		TOLERANCES ON ALL DIMENSIONS UNLESS OTHERWISE NOTED SHALL BE: ONE PLACE DECIMAL ±0.03 THREE PLACE DECIMAL ±0.005 ANGULAR ±1°	

SECURED BY MFC.com



MADE IN THE USA
 IRONTON, OH | WORTHINGTON, KY | WURLAND, KY

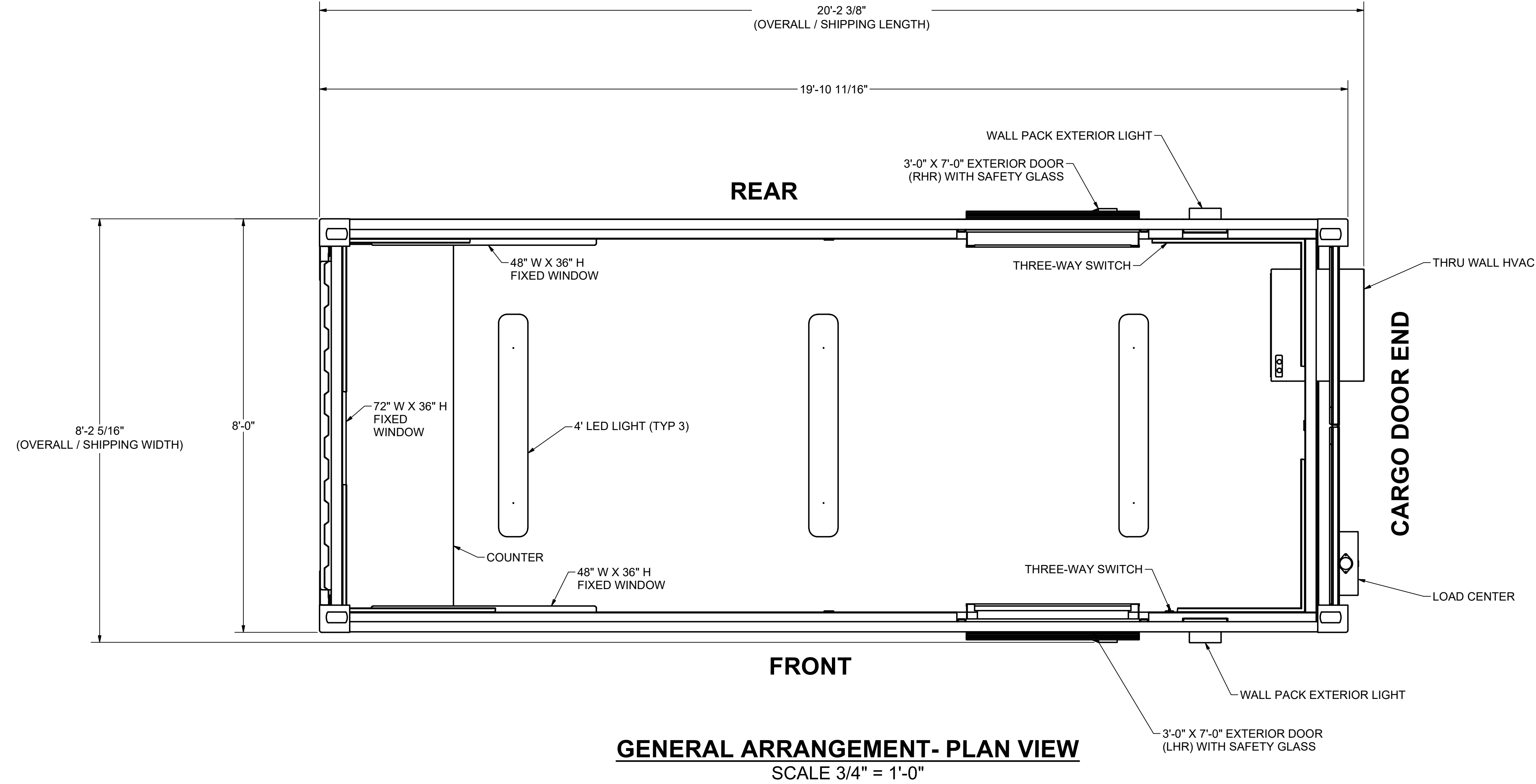
ISOMETRIC SHEETS - OVERALL 2

THIRD ANGLE PROJECTION	SHEET SIZE
	ANSI D

THIS DOCUMENT CONTAINS INFORMATION THAT IS CONFIDENTIAL AND PROPRIETARY TO MODULAR SECURITY SYSTEMS, INC. THIS DOCUMENT IS FURNISHED ON THE UNDERSTANDING THAT THE DOCUMENT AND THE INFORMATION IT CONTAINS WILL NOT BE REPRODUCED OR DISCLOSED TO OTHERS WITHOUT THE WRITTEN CONSENT OF MODULAR SECURITY SYSTEMS, INC. OR USED FOR ANY PURPOSE OTHER THAN CONDUCTING BUSINESS WITH MODULAR SECURITY SYSTEMS, INC., AND WILL BE RETURNED AND ALL FURTHER USE DISCONTINUED UPON REQUEST BY MODULAR SECURITY SYSTEMS, INC. COPYRIGHT MODULAR SECURITY SYSTEMS, INC. FIRST YEAR COPYRIGHT IS FIRST YEAR INDICATED ON THIS DOCUMENT. ALL RIGHTS RESERVED.

		MSSI Modular Security Systems	
PROJECT #	M20-401	CUSTOMER	PORTSMOUTH PPPO
PROJECT	8 X 20 GH		
REVISIONS			
NO.	DATE	BY	DESCRIPTION
0	1/7/2021	JOC	CUSTOMER REVIEW
TITLE ISOMETRIC SHEETS - OVERALL 2			
DRAWN	JOC	DATE	7/22/2020
CHECKED	JES	DATE	1/7/2021
ENG. APPR.	JES	DATE	1/7/2021
SALES APPR.			
MFG. APPR.			
O.A.			
SCALE	N.T.S.		
DRAWING #	M20-401-G82X-0101		
COMMENTS: 1 FINISH ALL WELDED SURFACES AND BREAK ALL SHARP EDGES UNLESS OTHERWISE SPECIFIED. 2 TOLERANCES ON ALL DIMENSIONS UNLESS OTHERWISE NOTED SHALL BE: ONE PLACE DECIMAL ±0.03 THREE PLACE DECIMAL ±0.005 FRACTIONAL ±1/16" ANGULAR ±1°			

		FINISH SCHEDULE						
SPACE	MATERIALS	WALLS	CEILING	FLOOR	NOTES			
OFFICE	FRAMING	2" X 4" WOOD STUD, 24" OC	2" X 4" WOOD STUD, 24" OC	EXISTING CONTAINER PURLINS	N/A			
	INSULATION	R-13 FIBERGLASS, KRAFT FACE	R-13 FIBERGLASS, KRAFT FACE	N/A	N/A			
	SUBSURFACE	N/A	N/A	EXISTING 1-1/8" PLYWOOD	N/A			
	SURFACE	29GA RIBBED STEEL PANELS	29GA RIBBED STEEL PANELS	ROLLED VINYL, SLATE GRAY, DIAMOND TREAD	N/A			



GENERAL ARRANGEMENT- PLAN VIEW
SCALE 3/4" = 1'-0"

TOLERANCES ON ALL DIMENSIONS UNLESS OTHERWISE NOTED SHALL BE:
 ONE PLACE DECIMAL ± 0.03
 TWO PLACE DECIMAL ± 0.015
 THREE PLACE DECIMAL ± 0.005
 ANGULAR ± 1°

DATE	7/22/2020
BY	JOC
CHECKED	JES
ENG. APPR.	JES
SALES APPR.	
MFG. APPR.	
O.A.	
SCALE	3/4" = 1'-0"
DRAWING #	M20-401-G82X-0200

NO.	0	DATE	1/7/2021	BY	JOC	CUSTOMER REVIEW
REVISIONS						
DESCRIPTION						
TITLE						
GENERAL ARRANGEMENT - PLAN VIEW						

THIRD ANGLE PROJECTION	SHEET SIZE
	ANSI D

THIS DOCUMENT CONTAINS INFORMATION THAT IS CONFIDENTIAL AND PROPRIETARY TO MODULAR SECURITY SYSTEMS, INC. THIS DOCUMENT IS FURNISHED ON THE UNDERSTANDING THAT THE DOCUMENT AND THE INFORMATION IT CONTAINS WILL NOT BE REPRODUCED OR DISCLOSED TO OTHERS WITHOUT THE WRITTEN CONSENT OF MODULAR SECURITY SYSTEMS, INC. OR USED FOR ANY PURPOSE OTHER THAN CONDUCTING BUSINESS WITH MODULAR SECURITY SYSTEMS, INC., AND WILL BE RETURNED AND ALL FURTHER USE DISCONTINUED UPON REQUEST BY MODULAR SECURITY SYSTEMS, INC. COPYRIGHT MODULAR SECURITY SYSTEMS, INC. FIRST YEAR COPYRIGHT IS FIRST YEAR INDICATED ON THIS DOCUMENT. ALL RIGHTS RESERVED.

MSSI
Modular Security Systems

M20-401
CUSTOMER PORTSMOUTH PPPO

8 X 20 GH
PROJECT