

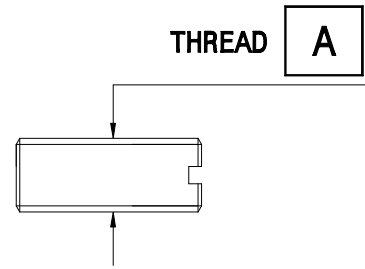
ACCELEROMETER MOUNTING STUDS

STRAIGHT MOUNTING STUD

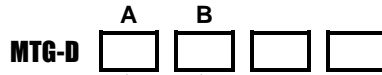


Thread Type

- | | |
|-------------------|--------------|
| 1 = 1/4"-28UNF | 6 = M5 |
| 2 = M6 | 7 = M4 |
| 3 = M8 | 8 = M10 |
| 4 = Quick Release | 9 = 5/16"UNF |
| 5 = 10-32UNF | |



DIFFERENTIAL MOUNTING STUD



Thread Type

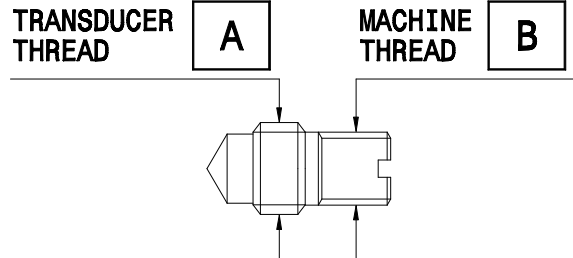
- | |
|-------------------|
| 1 = 1/4"-28UNF |
| 2 = M6 |
| 3 = M8 |
| 4 = Quick Release |
| 5 = 10-32UNF |
| 6 = M5 |
| 7 = M4 |
| 8 = M10 |
| 9 = 5/16"UNF |

Thread Gender

- M = Male
F = Female

Hex Outer Profile

- H = If Appropriate



GLUE MOUNTED STUD



Thread Type

- | |
|-------------------|
| 1 = 1/4"-28UNF |
| 2 = M6 |
| 3 = M8 |
| 4 = Quick Release |
| 5 = 10-32UNF |
| 6 = M5 |
| 7 = M4 |
| 8 = M10 |
| 9 = 5/16"UNF |

Thread Gender

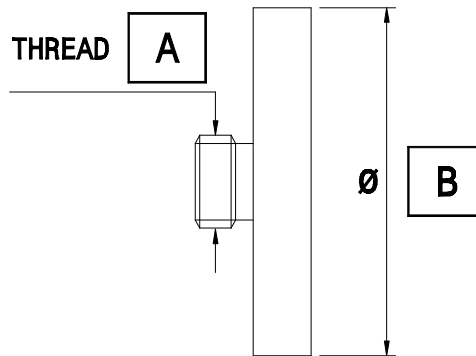
- M = Male
F = Female

Diameter

- | |
|---------------------|
| 1 = 25.4mm / 1.0" |
| 2 = 19.05mm / 0.75" |
| 3 = 30.5mm / 1.2" |
| 4 = 38.0mm / 1.5" |

Hex Outer Profile

- H = If Appropriate



MAGNETIC MOUNTING BASE



Thread Type

- | |
|-------------------|
| 1 = 1/4"-28UNF |
| 2 = M6 |
| 3 = M8 |
| 4 = Quick Release |
| 5 = 10-32UNF |
| 6 = M5 |
| 7 = M4 |
| 8 = M10 |
| 9 = 5/16"UNF |

Thread Gender

- M = Male
F = Female

Diameter

- | |
|---------------------|
| 1 = 25.4mm / 1.0" |
| 2 = 19.05mm / 0.75" |
| 3 = 30.5mm / 1.2" |
| 4 = 38.0mm / 1.5" |

