



Orbit Reporter

NOON REPORTING APPLICATION

ORBIT REPORTER
v:1.0.8

DAILYARRIVALCARGODEPARTURESOFEVENT

DAILY REPORT

START A NEW REPORT

Vessel name *

IMO *

Call sign *

Voyage number *

Report date (LT) *

2021-01-26

hh:mm:12:00

UTC Offset: +00

Clear

Noon position lat/long *

N

S

E

W

Vessel condition *

Laden

Ballast

Vessel status *

Search for port

« Enter port, code or country for autocompletion

Next port (Port / Country / Code)

ETA date (LT)

hh:mm:

UTC Offset: +00

Clear

Distance to go (NM)

Draft (m)

Fwd

Aft

15:19

DEPARTURE REPORT

DEPARTURE

Port of Departure

CJK ANCHORAGE

Terminal

-

Departure Date

2021-03-14 - 00:01 (UTC +08:00)

Cargo Ops

-

Arrival Draft Aft

7.0 m

Arrival Draft Fwd

5.8 m

BUNKER DATA

ROB (mt)

HSFO:

475.89

LSMGO:

369.90

CONSUMPTIONS

Auxiliary engine at port (mt)

HSFO:

0.81

DEADWEIGHT

OrbitMI



Orbit Reporter

NOON REPORTING APPLICATION

The image displays four overlapping screenshots of the Orbit Reporter application interface, which is a web-based tool for generating maritime reports. The interface features a dark blue header with navigation tabs: DAILY, ARRIVAL, CARGO, DEPARTURE, SDF, and EVENT. Each screenshot shows a specific report form with various input fields and buttons.

- DAILY REPORT:** Includes fields for Vessel name, IMO, Call sign, Voyage number, Report date (UTC), Time, UTC Offset, New position (Lat/Lon), Vessel condition, and Vessel status. A "Send a new report" button is visible.
- ARRIVAL REPORT:** Similar to the Daily Report, but with a "Search for port" field and a "Port of departure" field.
- CARGO REPORT:** Includes fields for Vessel name, IMO, Call sign, Voyage number, Port of arrival, Port of departure, Cargo operations performed, Cargo received, and Cargo loaded/discharged. It also has a "Send a new report" button.
- EVENT REPORT:** Includes fields for Vessel name, IMO, Call sign, Voyage number, Vessel condition, and Vessel status. It also has a "Send a new report" button.

Key features and benefits

Easy-to-use interface for all daily reports

- Browser-based tool usable on any Internet connected device
- Minimizes double entry and time spent entering data
→ *Simplifies daily reporting for the crew*

Decrease errors, increase compliance

- Built-in validation flags errors before they are sent
- Ease-of-use increases likelihood reports will be complete
→ *Improved data quality drives better analytics and decisions*

Customize reports for your company

- Create a look and feel that your crew will find familiar
- Add/subtract data entry fields or add new reports
→ *Data seamlessly fits into your workflow*

Reports auto-sent when link is live

- Works offline during times of weak connectivity
- Automatically transmits when connectivity improves
→ *Reduce the number of missed reports*

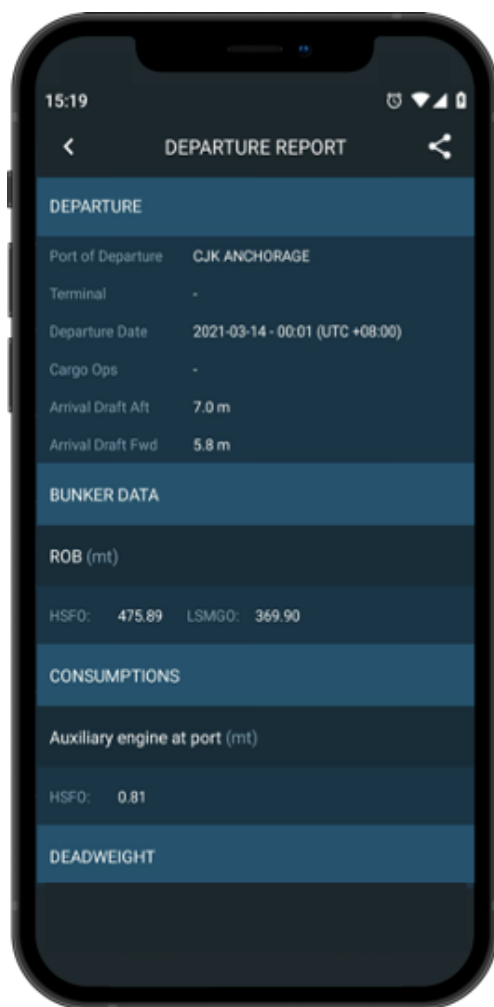
The Orbit difference:

Orbit Reporter turns the traditional noon report and other offshore communications into an accurate hi-tech data feed



Orbit Reporter

NOON REPORTING APPLICATION



The Orbit difference:
Orbit Reporter is a flexible, browser-based tool that installs on any shipboard internet connected device in seconds. Data entries are parsed, amplified and visualized throughout Orbit's solutions.

Orbit Reporter makes noon reporting easy

Reporter includes:

- One interface for multiple reports
- Custom report templates
- Customizable interface
- Built-in data validation

Reporter use-cases include:

- HTML-based tool installs on any vessel type
- Customize the interface for your company's workflow
- Common data entries, such as vessel name and IMO number, propagated across all reports

Collaboration features

- On-shore operators can request missing reports and discuss deviations directly
- Automatic email performance summary reports to vessel

Report templates

- Noon/Daily
- Arrival
- Cargo
- Departure
- Statement of Fact (SOF)
- Next Voyage
- Event
- Custom



OrbitMI Profile

Company & Mission

OrbitMI Inc. is a NYC software company with offices in Sweden, Norway, Greece and Serbia, and partners across the world. Our mission is to unlock the hidden value in data generated by maritime to help the entire sector become more efficient, profitable and sustainable.

Challenges we address

More than 100,000 commercial vessels move the world's cargo among 4300 ports in nearly 200 countries. Yet, maritime still transmits critical data via email and fax, processes it in closed-architecture point solutions that do not integrate with each other and performs most business analysis using spreadsheets.

The Product: Orbit

Orbit, our cloud-based Software-as-a-Service (SaaS) offering launched in 2017, helps people and organizations make better, faster decisions. Orbit is a feature-rich hub for maritime workflows that is open, extendible and powered by artificial intelligence and machine learning.

Orbit **aggregates** raw data from existing siloed systems, **amplifies** it via machine learning algorithms and AI, and **activates** it through enhanced workflows, dashboards, alerts and actionable insights delivered to decision makers in real-time via desktop, tablet and smartphone. It requires no hardware or software installations, which lets companies move fast to drive digital transformation without disrupting existing operations

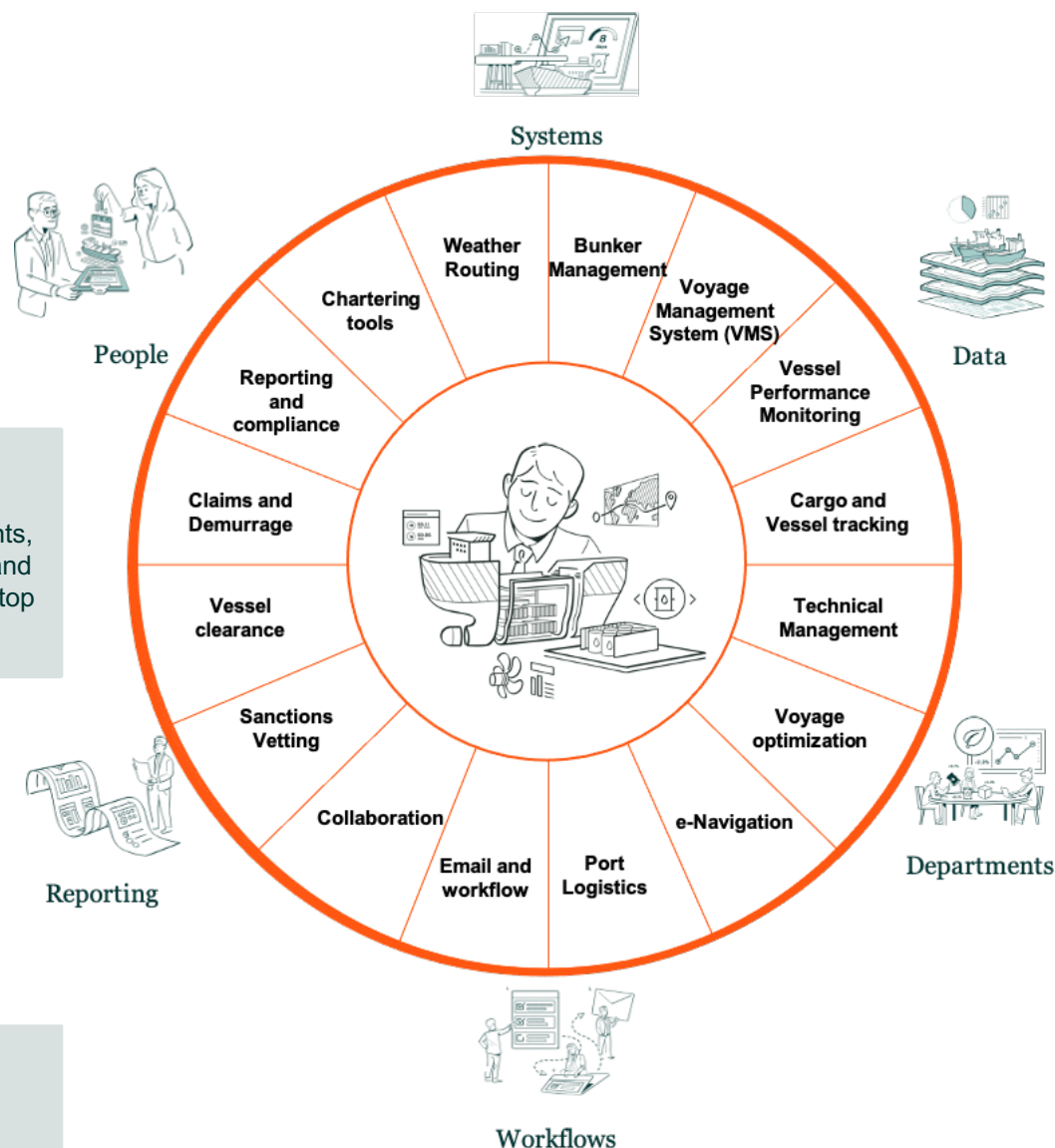
Future Proof Technology

Backed by 24/7 support and enterprise-grade security, Orbit is built on an open, modular architecture fed by webservice API's which lets Orbit extend and adapt as maritime changes. We extend the core features in Orbit to create new workflows, features, and integrations that match the way your organization operates. Orbit is cloud-based— hosted privately or via AWS. Supports multiple workflows and flexible licensing models. Multi-tenant. SSO available.



The Orbit difference:

Orbit connects people, systems, data, departments, workflows and reporting and delivers it all to your desktop and smartphone.



Contact us at:

sales@orbitmi.com
www.orbitmi.com