

APRIL 13, 2020 | VOLUME 10 | ISSUE 57

Our main focus remains delivering excellent clinical care to our patients and keeping our workforce safe.



Good afternoon,

It's hard to believe Easter was this past weekend. I hope you were able to enjoy this time with friends and family, even if it was only virtually. As I mentioned last week, we are all continuing to work diligently to be prepared for a surge in coronavirus patients. Not only are we preparing all of our operating units, including CNEMG and Integra, but we are also working very closely with the Rhode Island Department of Health (RIDOH) to set up an alternate care site in Cranston at the former Citizens Bank. Shannon Sullivan, MSW, LICSW, CCM, vice president of operations at Kent Hospital, together with leadership staff at Kent, is leading this effort. These folks, in addition to doing their "day" job at Kent, are working tirelessly to get this site up and running. These efforts are truly a tribute to their dedication to serving our community.

I see this type of dedication everywhere. This includes not only clinical staff, but others who are helping to prepare our hospitals, the finance office who is working on assuring things are set up properly, and maintaining our cash, etc.

Thank you all for bringing this level of dedication to the great work you have been doing. It is recognized and appreciated by not only myself, but our whole community. You are all heroes in this effort.

In addition, as most of you are aware, we have created an external page on our website (carenewengland.org/coronavirus) to provide the most up-to-date information on COVID-19 to our Rhode Island community. A recent addition to this web page is a number of video interviews created by our Marketing Department that will continuously be updated to include new, relevant videos related to the COVID-19 pandemic for the public's and media's viewing and professional use. The videos include interviews with medical experts, hospital presidents, and other leadership members from across Care New England.

The most recent video, featuring an update from me, discusses surge planning system-wide across Care New England, ventilators, the Respiratory Infection Triage Units (RITUs) – including the new one at the former Memorial Hospital site, and how our community is banding together statewide.

To learn more, please feel free to [visit the page](#) and watch any of these informative videos.

Thank you again.

Sincerely,

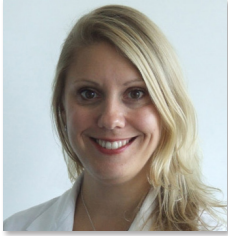
James E. Fanale, MD
President and Chief Executive Officer

continued >

ConvergenceRI
VIEW THIS WEEK'S EDITION HERE

KENT HOSPITAL

Melissa Murphy, MD, MPH, FACS, appointed interim chief of surgery at Kent Hospital



We are pleased to announce that Melissa Murphy, MD, MPH, FACS, has been appointed to the role of interim chief of surgery at Kent Hospital. Dr. Murphy recently served as the medical director for surgical quality and operations and is currently the surgical lead for the COVID-19 surge plan for Kent Hospital.

We also want to extend our profound appreciation to Guy Lancellotti, MD, who has served as chief of surgery since 2012. Dr. Lancellotti has made many contributions to the department and will remain a key member of the surgical faculty as he focuses his efforts to develop the vascular surgery program at Kent Hospital by broadening services offered.

Please join us in congratulating her on her new role.

THE PROVIDENCE CENTER

Deb O'Brien, president and COO, The Providence Center, appears on WPRO-AM radio to discuss services

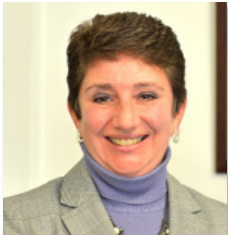


Photo: Deb O'Brien, president and COO, The Providence Center

WPRO news reporter/anchor, Steve Klamkin, spoke with Deb O'Brien, president and COO, The Providence Center, about the Anchor Recovery Community Center keeping critical resources open and available to everyone, during the COVID-19 public health crisis. To listen, [click here](#).

BUTLER HOSPITAL

Butler Hospital anxiety expert creates videos offering advice on how to manage stress during COVID-19 outbreak



Photo: Lisa A. Uebelacker, PhD, assistant director of Psychosocial Research Program and staff psychologist, Butler Hospital

Recently, Lisa A. Uebelacker, PhD, assistant director of Psychosocial Research Program and staff psychologist, Butler Hospital, participated in a marketing video, while working from home, to help educate the public about how to stay calm and manage stress levels while observing social distancing during the unprecedented coronavirus outbreak. Dr. Uebelacker also highlighted the many valuable resources and programs available at Butler Hospital, to offer help to the community. To watch, [click here](#).

WOMEN & INFANTS HOSPITAL

Women & Infants provider recently appeared on CNN's Sanjay Gupta's coronavirus podcast



Margaret Howard, PhD, Women's Behavioral Health, Women & Infants Hospital; executive director, Women's Behavioral Health at Care New England appeared on CNN's Sanjay Gupta's coronavirus podcast, to discuss the pandemic. The episode focused on how pregnant women are being affected by the virus-both in terms of physical and mental health. To listen, [click here](#).

KENT HOSPITAL

Kent Hospital receives thoughtful donations from surrounding community



Over the past several weeks, Kent has received generous donations from throughout the local community. These donations have included [3D printed personal protection equipment](#) (PPE) from West Warwick High School teachers and students in the Industrial Technology Department; lunches from RI Senate Majority Leader Michael McCaffrey (D-Dist. 29, Warwick), Senator Erin Lynch Prata (D-Dist. 31, Warwick, Cranston), and Senator Mark P. McKenney (D-Dist. 30, Warwick); 100 dozen (that's 1,200!) doughnuts from Krispy Kreme, and the [40 cases of cookies from the Girl Scouts](#) of Southeastern New England.

THE PROVIDENCE CENTER

Anchor Recovery Community Center on NBC 10 Sunrise Show



Photo: Tim Taylor, LCDP, peer recovery specialist, Anchor Recovery Community Center

WJAR-TV's Alison Bologna featured The Providence Center's Anchor Recovery Community Center on NBC 10's Sunrise Show. The story highlighted peer recovery staff working with clients over the phone, offering remote treatment, during the COVID-19 pandemic. To watch, [click here](#).

WOMEN & INFANTS HOSPITAL

Couples experience with having a baby at Women & Infants during COVID-19 recently featured in The Providence Journal



Photo: courtesy of The Providence Journal - Kris Craig Darrell King, Kaitlyn Poole, and Greyson Taylor King

Kaitlyn Poole and Darrell King were recently interviewed by Tom Mooney from The Providence Journal about their positive experience having a baby at Women & Infants Hospital during the COVID-19 health care crisis.

Kaitlyn gave birth to a baby boy on Wednesday, March 25. To read more, [click here](#).

KENT HOSPITAL

WJAR-TV 10 interviews Shannon Sullivan, vice president of operations, and Judith Ann Thorpe, chief nursing officer



Photo: Judith Ann Thorpe, MSN, RN, chief nursing officer at Kent Hospital, provided by WJAR-TV 10

WJAR-TV 10's Health Check reporter, Barbara Morse, recently held a Facetime interview with Shannon Sullivan, MSW, LICSW, CCM, vice president of operations, and Judith Ann Thorpe, MSN, RN, chief nursing officer at Kent Hospital, to discuss the new testing tents on the Kent campus. To watch, [click here](#).

BUTLER HOSPITAL

Butler Hospital offers insight into how stress may present in different individuals



Photo: Sheila Russell, LICSW, director, partial hospital and intensive outpatient services, Butler Hospital

WJAR-TV's Parker Gavigan interviewed Sheila Russell, LICSW, director, partial hospital and intensive outpatient services, Butler Hospital, about why, during the COVID-19 pandemic, people are dropping dimes, calling police on neighbors, and trying to get their employees in trouble. To watch, [click here](#).

BUTLER HOSPITAL

Laughter is the best medicine, according to Butler Hospital psychologist



Photo: Brandon Gaudiano, PhD, clinical psychologist, Butler Hospital

The Providence Journal's G. Wayne Miller wrote a story, featuring Butler Hospital, about how having a good laugh, during this time of crisis, can help mental health. Brandon Gaudiano, PhD, clinical psychologist, Butler Hospital, offered a statement about how laughter helps with the blues. To read, [click here](#).

VNA OF CARE NEW ENGLAND

Rhode Islanders offer shout-outs to the VNA of Care New England for work during pandemic

Readers of the *Valley Breeze* recently read about family and friends in medical fields being hailed as heroes in their local newspaper. Those who wrote in gave people in the medical and emergency response fields, who are on the front lines of the fight against COVID-19, shout-outs of appreciation. Among the shout-outs included the entire staff at the VNA of Care New England for providing medical care and hospice to homebound people. To read, [click here](#).

THE PROVIDENCE CENTER

The Providence Center's Anchor Recovery Community Center featured in The Pawtucket Times

Recently, Deb O'Brien, president and COO, The Providence Center spoke with Jonathan Bissonnette, news reporter, for his article, "'Social distancing' a big challenge to people struggling with addiction." Deb spoke about what services are available at the Anchor Recovery Community Center and how care is being provided during the COVID-19 health crisis. To read, [click here](#).

Care New England welcomes personal protective equipment donations!

With personal protective equipment (PPE) in high demand and short supply, Care New England is welcoming donations of any of the following items:

Most Urgent Needs

- N95 masks
- Surgical masks
- Surgical mask with shield
- Nasal swabs for medical use

Other Needs

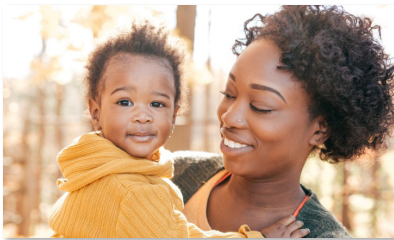
- Disinfectant
- Eye protection, including safety goggles/glasses
- Face shields
- Gloves, disposable
- Gowns, disposable
- Hand sanitizer, greater than 60 percent alcohol
- Hand soap
- Shoe covers, disposable



If you are interested in making a donation, please email SupplyChain@carene.org. We thank you for your support!

DATES TO REMEMBER

Black Maternal Health Week Monday, April 13 through Friday, April 17



Join us daily for a series of webinars, presentations, and live discussions around issues of racism, health disparities disproportionately affecting black women, maternal health, challenges and opportunities for black midwives, and more.

[Click here](#) for the daily schedule, topics, and links.