

FEBRUARY 19, 2018 | VOLUME 8 | ISSUE 8



**With the release last week of Care New England's FY 2018 Q1 consolidated financials, I am pleased to share that the positive results contained in the report represent a continuing trend of both operational and financial improvements, following the trends from Q3 and Q4 of FY 2017.** There are lots of details and numbers to show how this was achieved. I have no doubt, however, that this accomplishment is primarily due to the continued effort—a true team effort—of everyone at Care New England, to ensure the successful implementation of our action plans remains a top-priority.

While the system as a whole reported a loss of \$33.7 million in Q1 of FY 2018, the one-time charges surrounding the closure and restructuring of Memorial Hospital (\$33.9 million) accounted for more than 100 percent of the total loss. With the exclusion of Memorial Hospital and its affiliates from the Obligated Group (as of December 22, 2017), the system's loss for Q1 of FY 2018 was \$8.7 million, of which Memorial Hospital (\$8.5 million) accounted for nearly 98 percent. It is important to realize that challenges, financial and otherwise, will remain front and center as the difficult work to close Memorial continues, but there is no doubt that our strategic plans and collective hard work are making the future of Care New England look a bit brighter.

Please continue to work aggressively to implement the action plans with an ongoing focus on growth initiatives, patient access, and care retention. While it is clear by last week's filing that significant progress is being made, much more work remains. I am confident that moving forward we will continue to build upon the progress we have made together.

Have a great week!

Sincerely,

James E. Fanale, MD  
President and Chief Executive Officer

**ConvergenceRI**  
VIEW THIS WEEK'S EDITION HERE

## Secretary of Rhode Island Executive Office of Health & Human Services visits Women & Infants



*Pictured from left to right are: Ashley O'Shea, communications director, Executive Office of Health & Human Services, State of Rhode Island; Dr. Jim Fanale, CNE president and CEO; Eric Beane; Dr. Adam Czynski; Dr. Robert Insoft, senior vice president and chief medical officer, Women & Infants; and Dr. Barry Lester.*

On Friday, February 16, at the Rhode Island Department of Health Governor Gina Raimondo and the Rhode Island Task Force to Support Pregnant and Parenting Families with Substance-Exposed Newborns (SEN Task Force) announced several initiatives in our state to support new and expectant families in recovery and those dealing with NAS. The speaking program included Dr. Barry Lester, director of the Brown Center for Children at Risk at Women & Infants, who spoke about a new outpatient Family Care Follow-Up Clinic at the Brown Center.

Prior to the event on Thursday, Eric Beane, Secretary of the Rhode Island Executive Office of Health & Human Services, visited Women & Infants to see first-hand some of the incredible work taking place there in the care of pregnant women, new moms, and babies born with Neonatal Abstinence Syndrome (NAS). Dr. Adam Czynski, who leads the Family Care Unit with nurse manager DonnaLee Segal, led Secretary Beane and his colleagues on a tour and talked about the unique model of care in which parents are able to be directly involved in the care of their infant, 24 hours a day, while that infant is being cared for in the hospital.

## Care New England town meetings announced

Dr. Jim Fanale, president and CEO, will present employee town meetings—staff are encouraged to attend whichever session is most convenient for them:

- **Monday, February 19 at 1 p.m.**, Service Road, Building 2, lunch room.
- **Wednesday, February 21 at 2:30 p.m.**, Women & Infants Hospital, South Pavilion auditoriums.
- **Tuesday, February 27 at 3:30 p.m.**, Butler Hospital, Ray Conference Center.
- **Wednesday, February 28 at 1 p.m.**, Kent Hospital, Doctor's Auditorium.

## Butler Hospital in the news

Butler Hospital will be featured on ABC6 as part of a multi-segment news story on the opioid crisis. During the multi-segment program ABC6 News is delving into the opioid epidemic, its severity in Southern New England, how it's devastating families in every community, and what's being done to help.

As part of the program Butler Hospital's executive team was interviewed by Melissa Randall about recent changes in belongings management and on Monday, February 19 Butler Hospital Chief Medical Officer Jim Sullivan will participate on a panel for a community town hall on the topic, which will be filmed and air the following evening. Tune in tomorrow, Tuesday, February 20 to watch the town hall.

View the current segments at <http://www.abc6.com/category/330004/the-opioid-crisis>.

## VNA of Care New England continues membership with ElevatingHOME

ElevatingHOME's mission is to champion for high-quality home-based care as the foundation of a patient-centered health care system. The organization advocates on behalf of home health and hospice providers that offer comprehensive health care to Medicare, Medicaid, uninsured and under-insured patients as well as an array of community benefits.

*continued >*



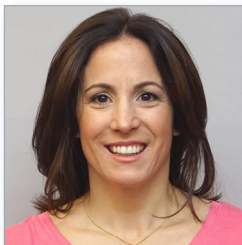
< continued

ElevatingHOME addresses issues that impact all home health and hospice providers and advocates before Congress, the Centers for Medicare and Medicaid Services (CMS), the Medicare Payment Advisory Commission (MedPAC), and other federal agencies and works in collaboration with other national organizations representing the health care continuum. As a member, the VNA of Care New England shows its commitment to advancing home and hospice care to a model that is both financially sound and patient-centered.

In addition to advocacy, as a member organization the VNA of Care New England has access to educational materials, all supported by the Visiting Nurses Associations of America (a subsidiary of ElevatingHOME), that explores policy, operational, and clinical best practices, which guide caretakers for optimal performance.

## WOMEN & INFANTS

### Colleen Moitoso receives DAISY Award



Congratulations to Colleen Moitoso, RN, a nurse on the Labor and Delivery Unit at Women & Infants, who recently received the DAISY Award. The award is part of the DAISY Foundation's program to recognize the above and beyond efforts performed by nurses every day.

In nominating Colleen, the wife of a patient wrote, "Colleen's support, wisdom and skill served to augment and galvanize my role—suddenly my wife had the support and gentle guidance of an expert (Colleen) along with the companionship and coaching of a loved (but amateur) family member...I had the opportunity to witness the breadth of her (Colleen's) capabilities and talents. And I will always remember her ability to understand what was

needed and match her skill and energy to meet that need." Colleen has been a nurse with Women & Infants since 1992. Congratulations Colleen!

## THE PROVIDENCE CENTER

### University of Rhode Island 5K to benefit Anchor Youth Recovery Center

This April, the University of Rhode Island (URI) will host the "Run Your Life" charity 5K, the proceeds of which will go to support the soon-to-open Jim Gillen Anchor Youth Recovery Center. The event was organized by the URI Pre-Physical Therapy Club and Doctor of Physical Therapy program, who partnered with Anchor Recovery Center to raise addiction and recovery awareness.

"Our courses emphasize the importance and effectiveness of interprofessional patient management for opioid use disorders," said doctor of physical therapy candidate, Lynne Hibbard, who is coordinating the event. "We were looking for ways to promote healthy lifestyles, and to provide the community with information about valuable programs. After hearing the vision for the Anchor Youth Recovery Center, I knew it was exactly what our state needs, and the perfect message to share with the URI and Rhode Island community." The 5k will be held on **Sunday, April 15 at 8:45 a.m.** at 45 Upper College Road South Kingstown, RI. Registration is \$20. To sign up, visit: <https://www.eventbrite.com/e/run-your-life-5k-tickets-42142855415>.



## CARE NEW ENGLAND

### Say cheese!



Has your team come together for a picture recently? Share it with us! We want to show you off. Whether you're celebrating a national day/week/month that honors your specialty or position; honoring your outgoing residency class; attending a conference; working together on Christmas; volunteering outside the hospital; wearing fun clothes or just coming together, we want to give you a moment to shine on our social media channels. Please submit photos to Sarah Hurley in Care New England Marketing at [SHurley@CareNe.org](mailto:SHurley@CareNe.org). If the photo is timely (honoring a specific day or event), please try to submit your picture by the next business day, at the latest. Here are some tips to follow when taking and sharing photos:

1. Make sure the image is in focus. Try to avoid using the zoom on a cell phone.
2. Try to use natural light when possible, however, do not take a photo with people standing in front of a window.
3. Please pay attention to what's in the background. Photos with other people or patient info will not be accepted. ene