

ISLAND AND HORIZONTAL

□□□

# RODI 4



A  
R  
N  
E  
G

# STYLE ON DISPLAY.

Maximum transparency, an infinite range of custom finishes and reduced environmental impact: **Rodi 4** is a plug-in open island that eliminates all visual barriers and focuses attention on the foods on display. It also comes in an NT version. Contemporary design combined with great versatility allows this display to satisfy all promotional needs.







# THE DESIGN OF ACCESSIBILITY.

Excellent visibility and easy access to products encourages self-service sales of pre-packaged fish, meat, cold cuts, cheese, dairy products and pre-packaged fresh fruit and veg. G4 glass and the elimination of all mechanical supports set new standards in food presentation, improving visibility and elegance.



- Complete transparency
- Unrivalled ergonomics
- Ideal for promotional areas





— GAS —  
**R290**  




# SUSTAINABLE FRESHNESS.

The use of natural R290 refrigerant reduces the refrigeration system's impact on the environment and improves performance while cutting energy consumption.





# FOCUS ON VERSATILITY.

Rodi 4 comes in a choice of lengths to suit the needs of small, medium and large stores. The ability to serve as an end unit makes this display unique on today's market and greatly increases flexibility in planning store layouts.





# UNLIMITED CUSTOMISATION.

Finish can be fully customised thanks to an extensive choice of wood or paint effect materials and the ability to apply tailor-made graphics. The bottom panels can easily be changed to suit new store furnishing styles or specific promotional events.



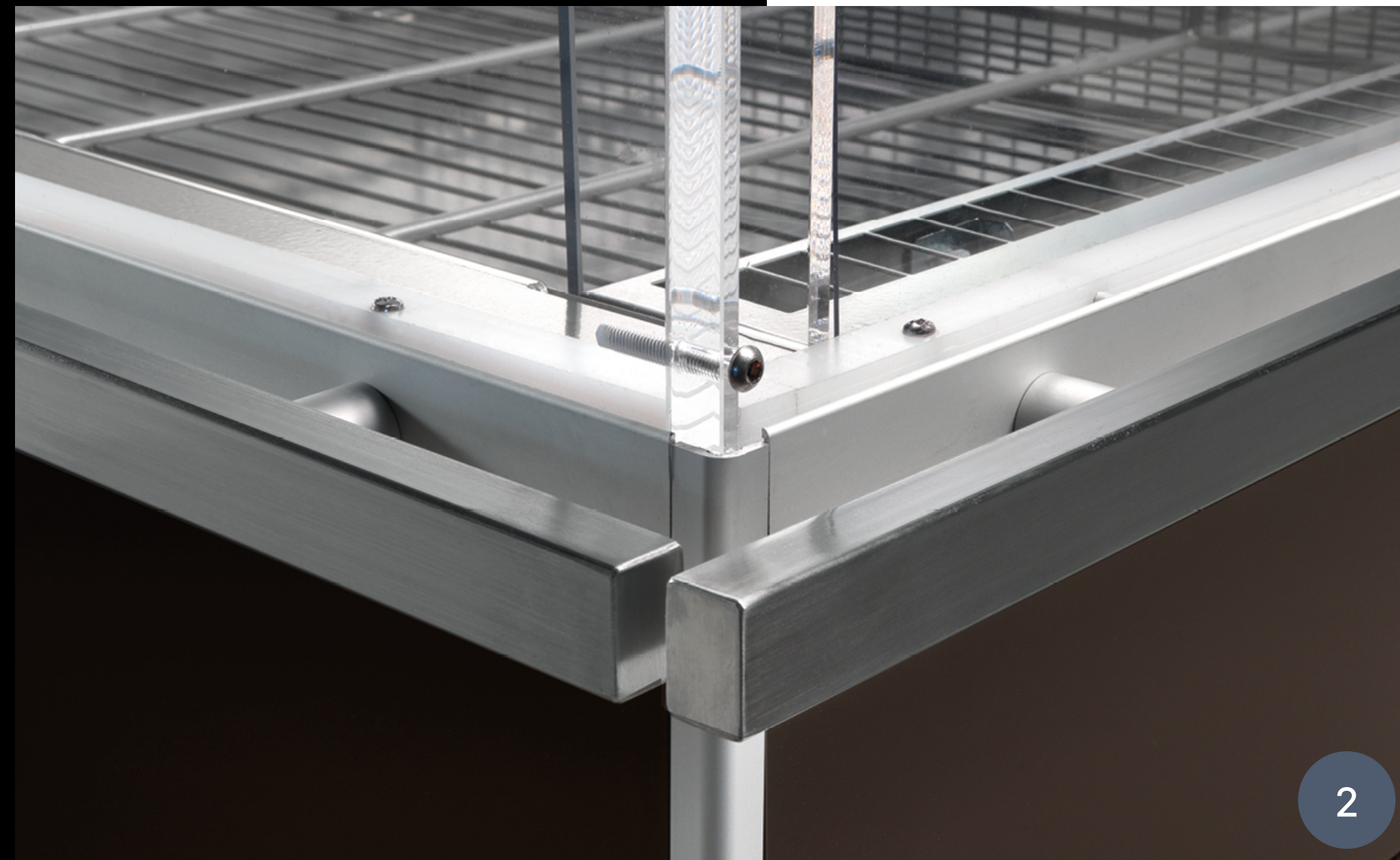


1

# ACCESSORIES

1 - Island wheels kit

2 - Rectangular bumper



2





3 - LED light

4 - Wire basin partitions

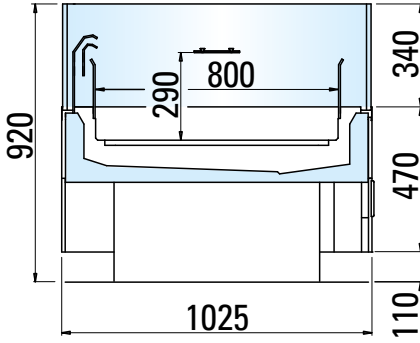
5 - Bottom grilles



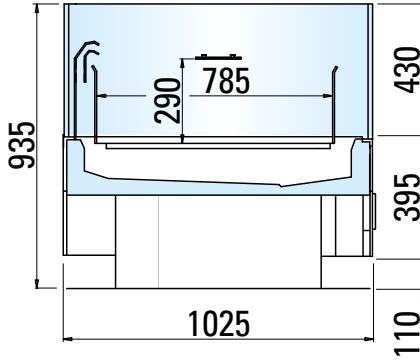
RODI 4 ISL-A-1 TN V LINEARE I

Overall length (mm)		1345		1646		1945		2135		2545	
Height of glass front		G3	G4	G4	G3	G4	G4	G4	G4	G4	G4
Temperature class	3M1	•		•		•		•		•	
Preservation temperature (°C)	0/+2	•		•		•		•		•	
Refrigerant	R290	•		•		•		•		•	
Horizontal display area* (m²)		0,94		1,18		1,41		1,56		1,88	
Energy class**		<div><div>A</div><div>T</div><div>G</div><div>F</div></div>		<div><div>A</div><div>T</div><div>G</div><div>F</div></div>		<div><div>A</div><div>T</div><div>G</div><div>F</div></div>		<div><div>A</div><div>T</div><div>G</div><div>F</div></div>		<div><div>A</div><div>T</div><div>G</div><div>F</div></div>	

\*Value referred to illustrated configurations. \*\*The energy class may vary depending on the product configuration.



G3



G4



ED. 01 - 12/03/2024



WWW.ARNEG.COM



Arneg follows a policy of continuous improvement and reserves the right to update this document at any time without prior notice