

SERVE-OVER COUNTER AND SEMI-VERTICAL

□□□

BRISTOL



A
R
N
E
G



VERSATILITY, TRANSPARENCY AND ERGONOMICS.

Maximum safety and convenience for serving staff, an advanced design that improves product visibility and all the flexibility needed for a wide range of uses: **Bristol** displays come in a wide range of models to meet varying retail needs and satisfy the latest consumer trends.

FOCUS ON FRESHNESS.

These latest-generation displays offer serve-over and self-service functionality and come in many different versions: hot case, bakery, patisserie and deli. They can even be configured as semi-vertical counters to complete the range of models available.





- **Product quality in the forefront**
- **Modern, minimalist design**
- **Unrivalled product visibility**
- **High load capacity**

THE BENEFIT OF ERGONOMICS.

Compared to standard displays, Bristol boasts a higher display shelf and worktop. This design solution greatly facilitates the work of serving staff while also improving visibility and making products look more attractive. Ergonomics and design come together to provide a complete and functional store furnishing solution.





TCOM, THE MEDIUM WAVE REVOLUTION.

The latest result of Arneg research, **TCOM** is a patented technology that enhances the quality of hot deli foods safely and efficiently. Thanks to a new medium-wave heating system, **TCOM** maintains a constant and uniform core temperature of 65°C without drying food or spoiling its nutritional properties. The system reaches operating temperature in 45 minutes instead of the normal 3 hours. With a heated shelf fitted, warm-up time is reduced to ZERO, guaranteeing low consumption and uniform temperature.

- **Top-quality food preservation**
- **Operating temperature can be reached in 45 or even 0 minutes.**
- **Significant reduction in energy costs**

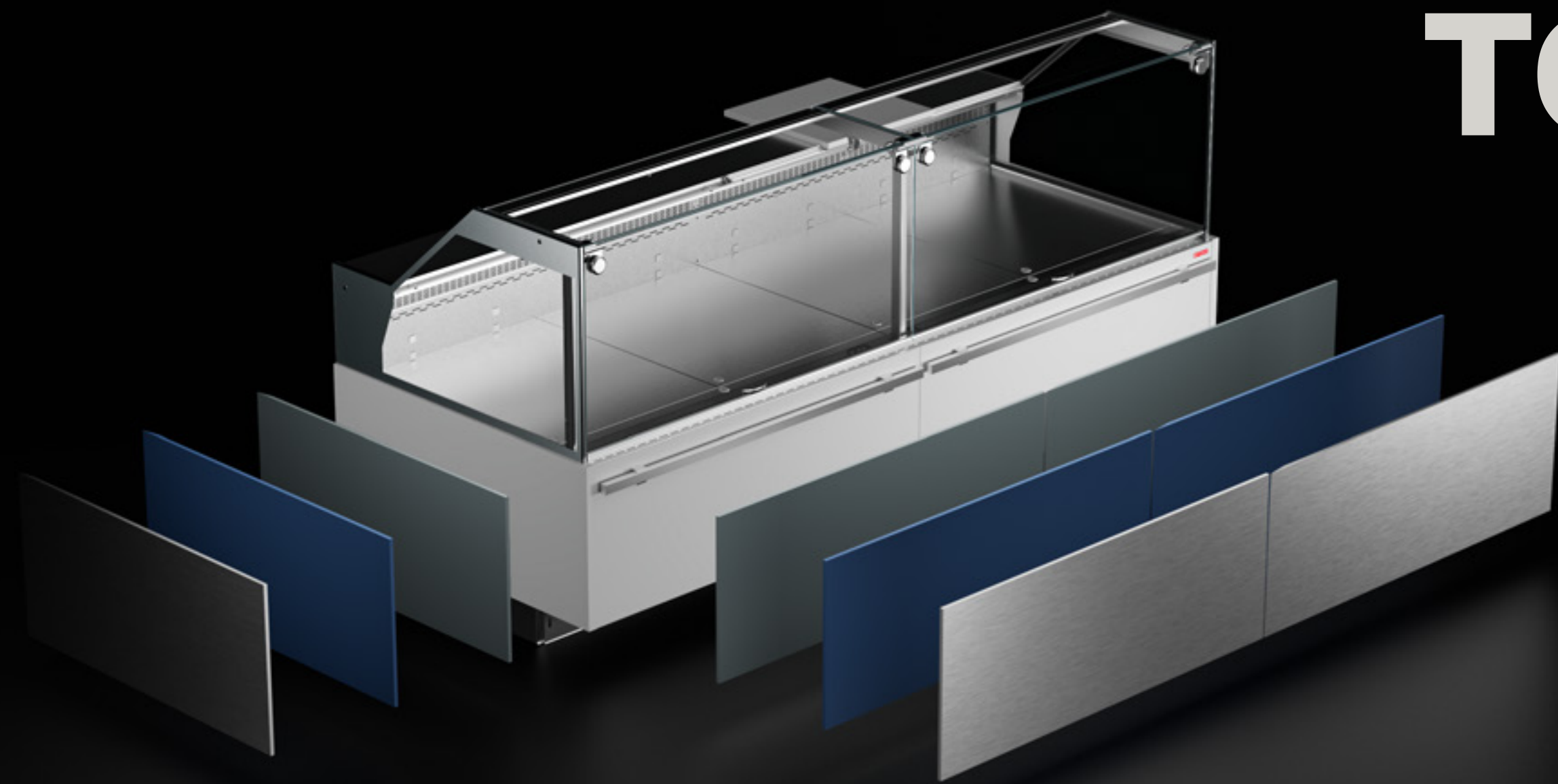
TCOM comes in two versions: with overhead heating only and with overhead heating plus heated display shelf. This last configuration reduces pre-heating time to ZERO. A special ventilation system cools all glass and metal surfaces, ensuring maximum safety for serving staff and customers. **TCOM** is a plug&play solution and can be integrated with remote management systems.





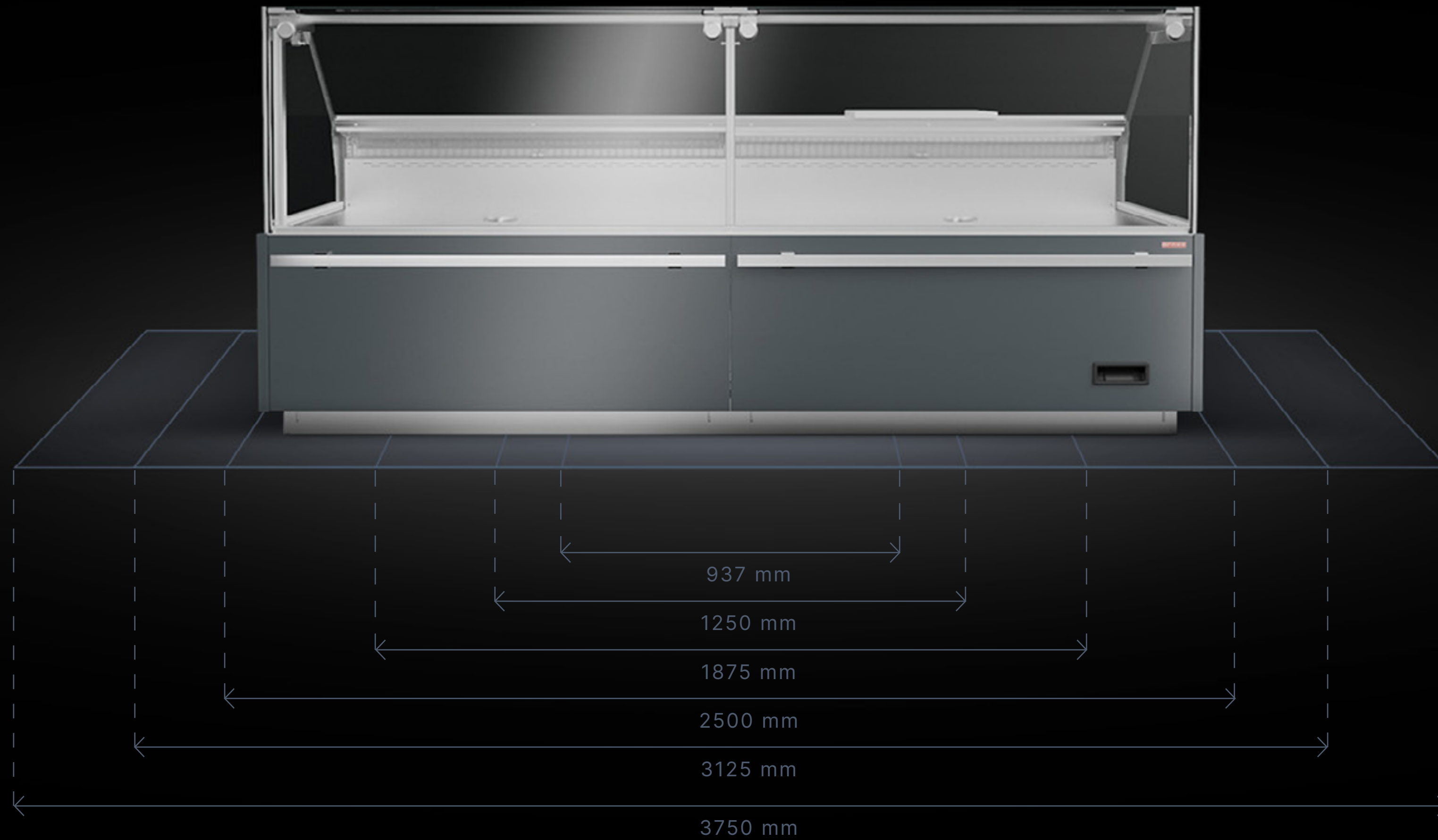
TAKEAWAY FUNCTIONALITY.

The takeaway version delivers excellent performance and is ideal for use in promotional areas that can satisfy many different needs. Bristol's excellent ergonomics ensure unrivalled access while the transparency afforded by minimalist design focuses customers' attention on the freshness of the products.

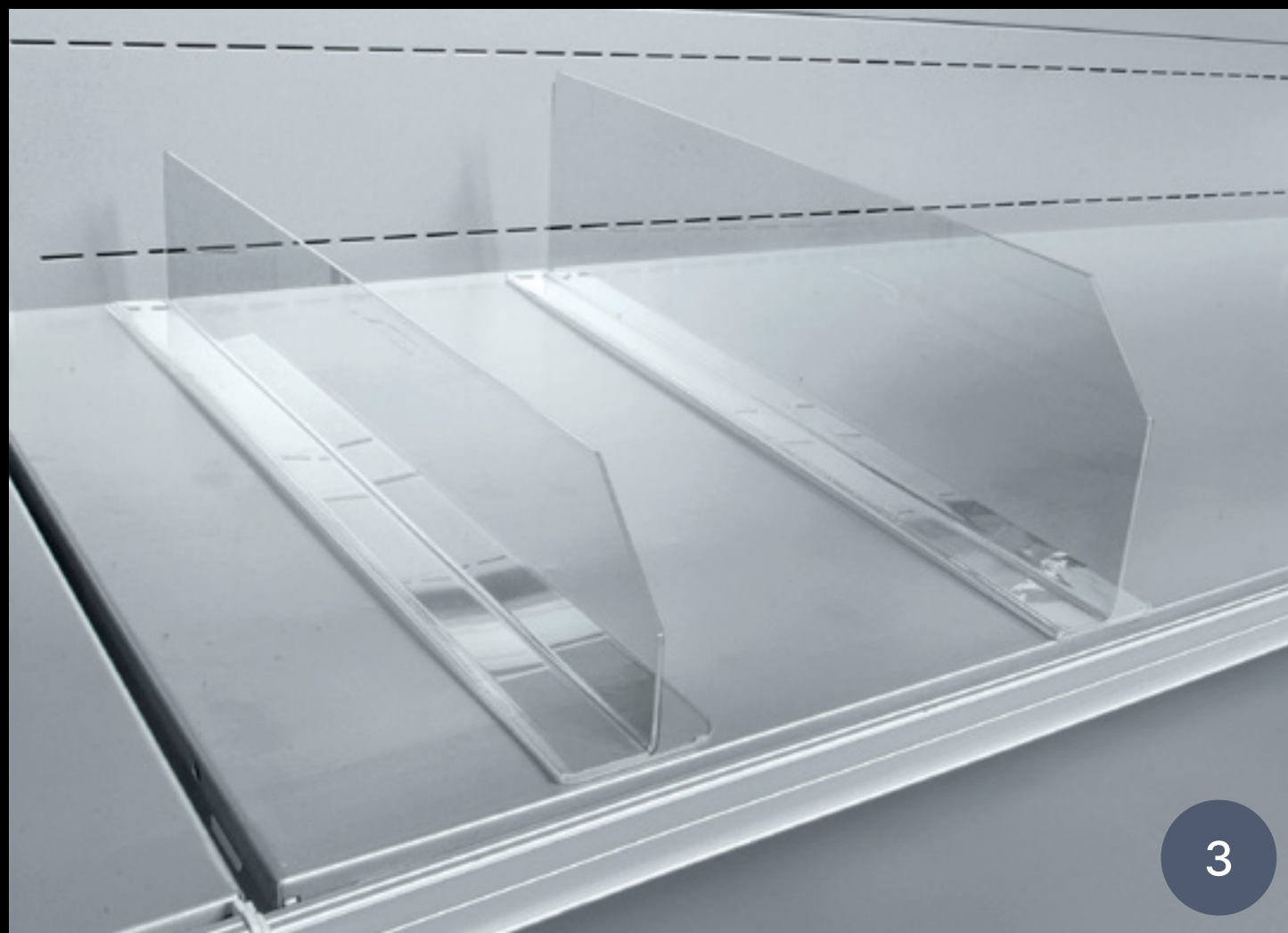
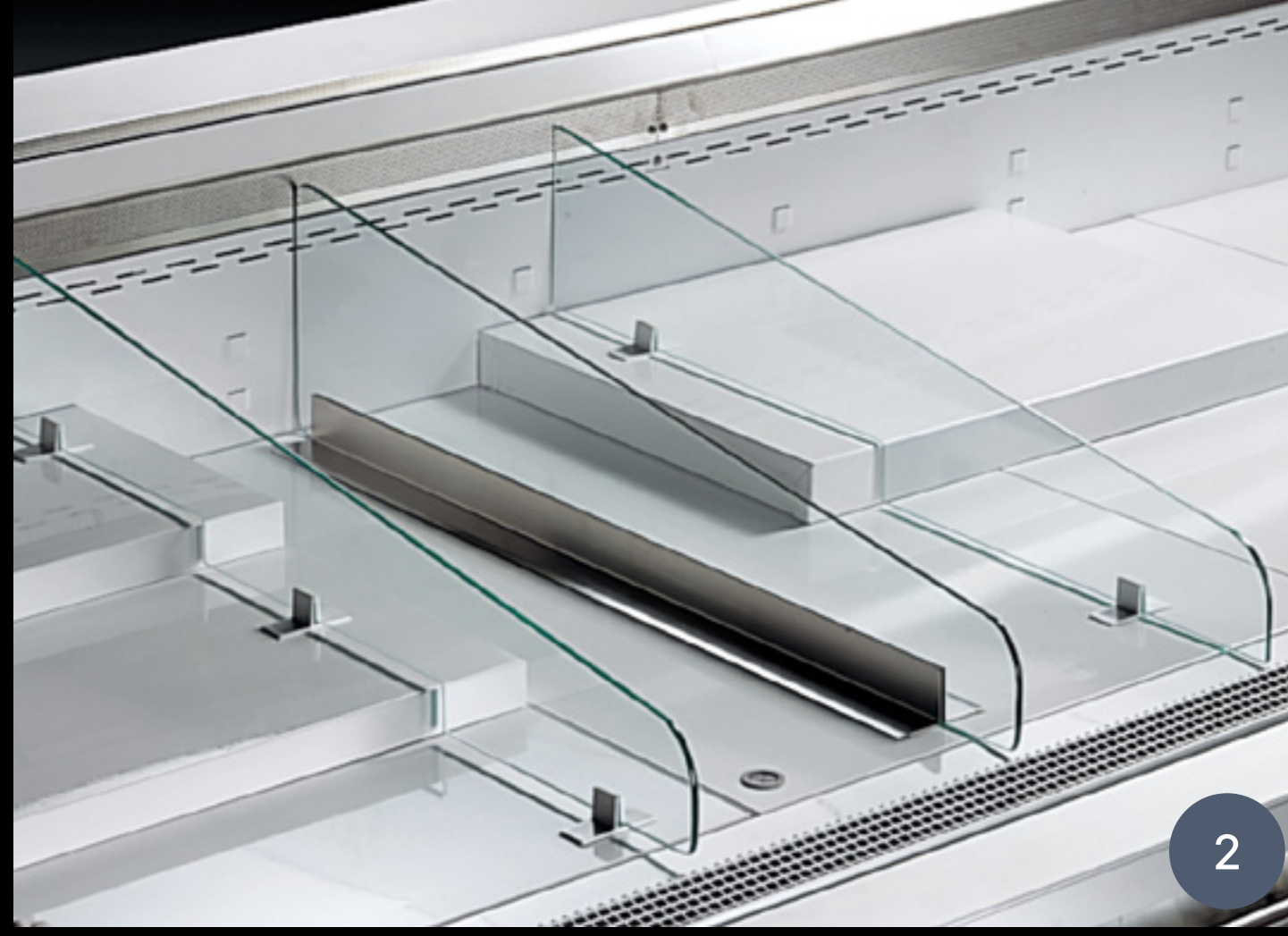
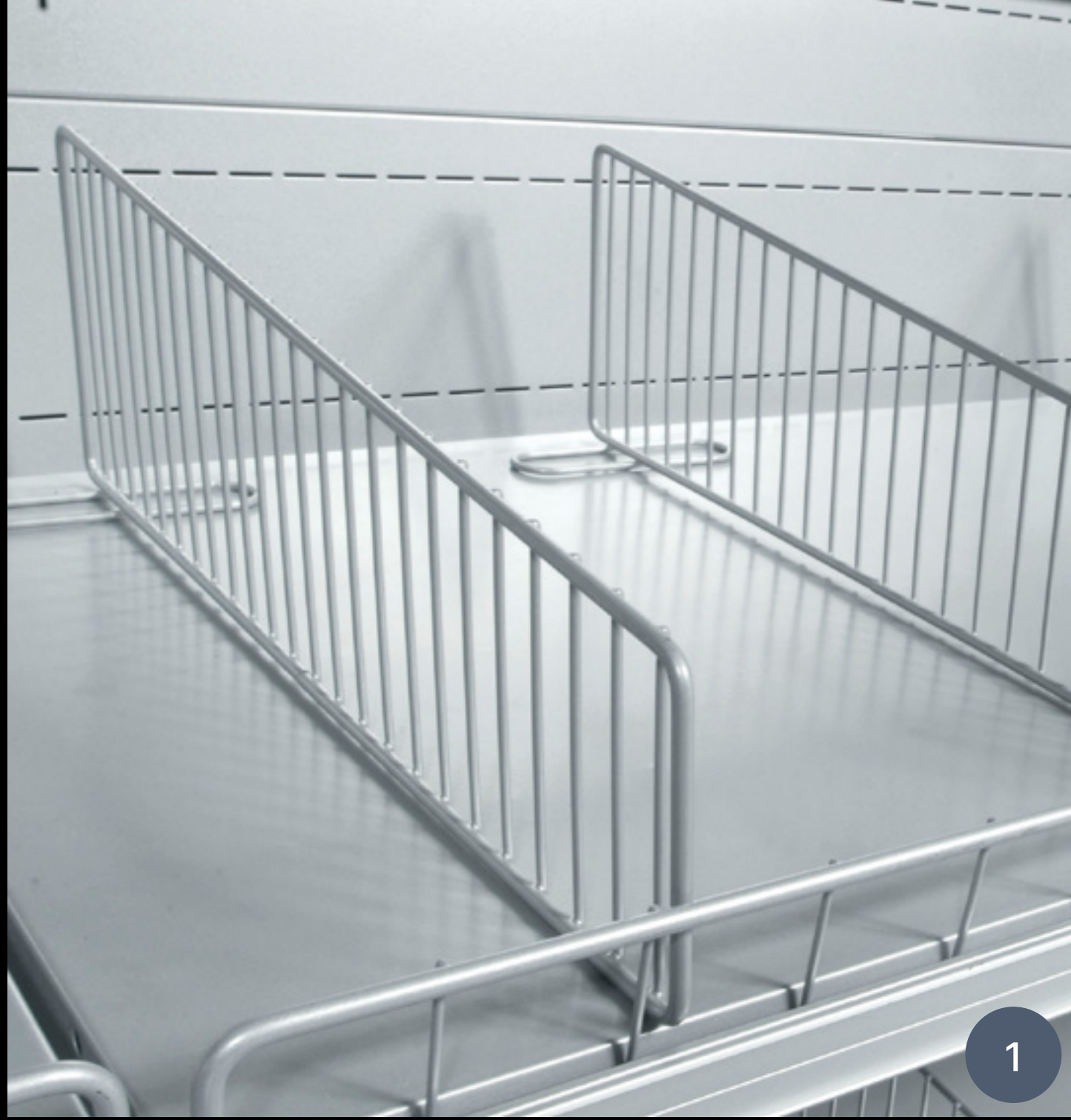


FREEDOM TO CUSTOMISE.

Bristol's front panels can be customised with various wood, metal, mosaic and marble effect materials to create superb finishes and match even the most refined store furnishing styles.



Flexibility is the real strength of these displays, which come in six lengths from 937 to 3750 mm. Stores can choose the size best suited to available space and their retail needs, with the certainty of obtaining excellent and long-lasting performance.



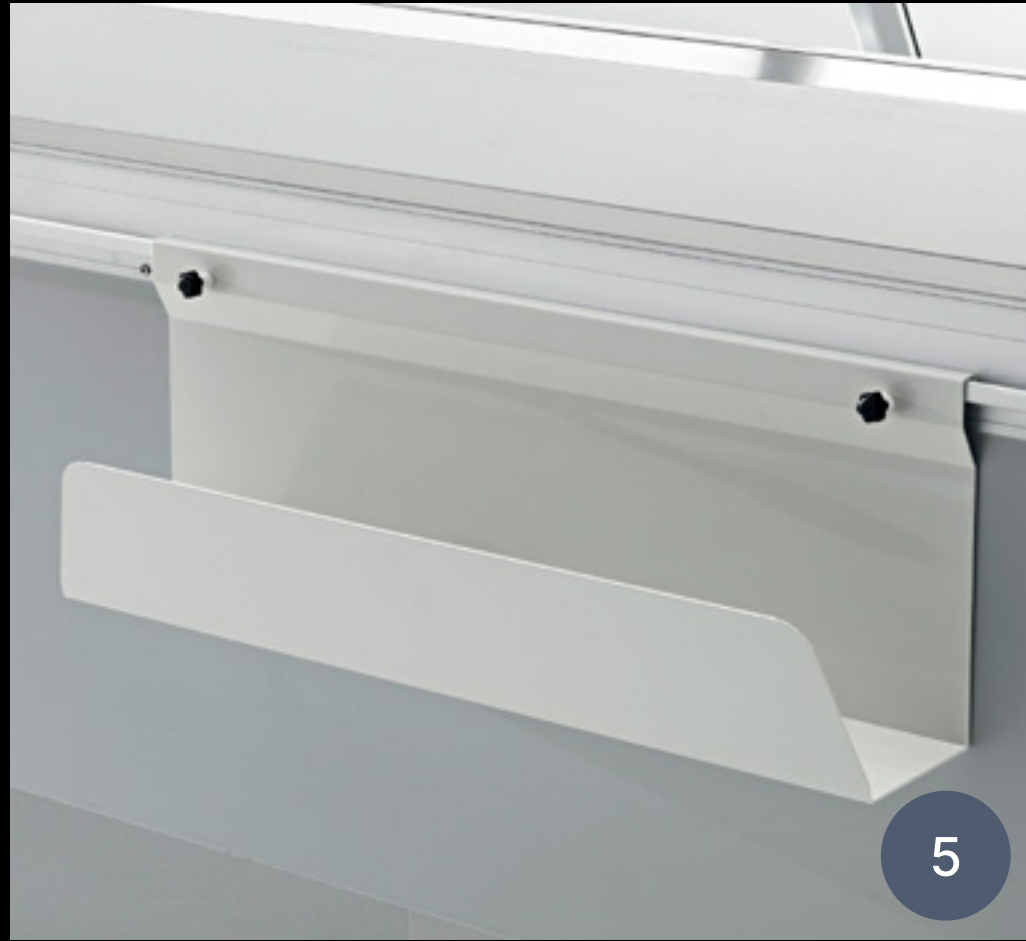
ACCESSORIES

1 - Wire deck and basin partitions

2 - Glass basin partitions

3 - Plexiglass partitions

4 - Bag hook



5 - Paper holder



6 - Slicer holder



7 - Sliding stainless-steel shelf

8 - Knife holder



8



9

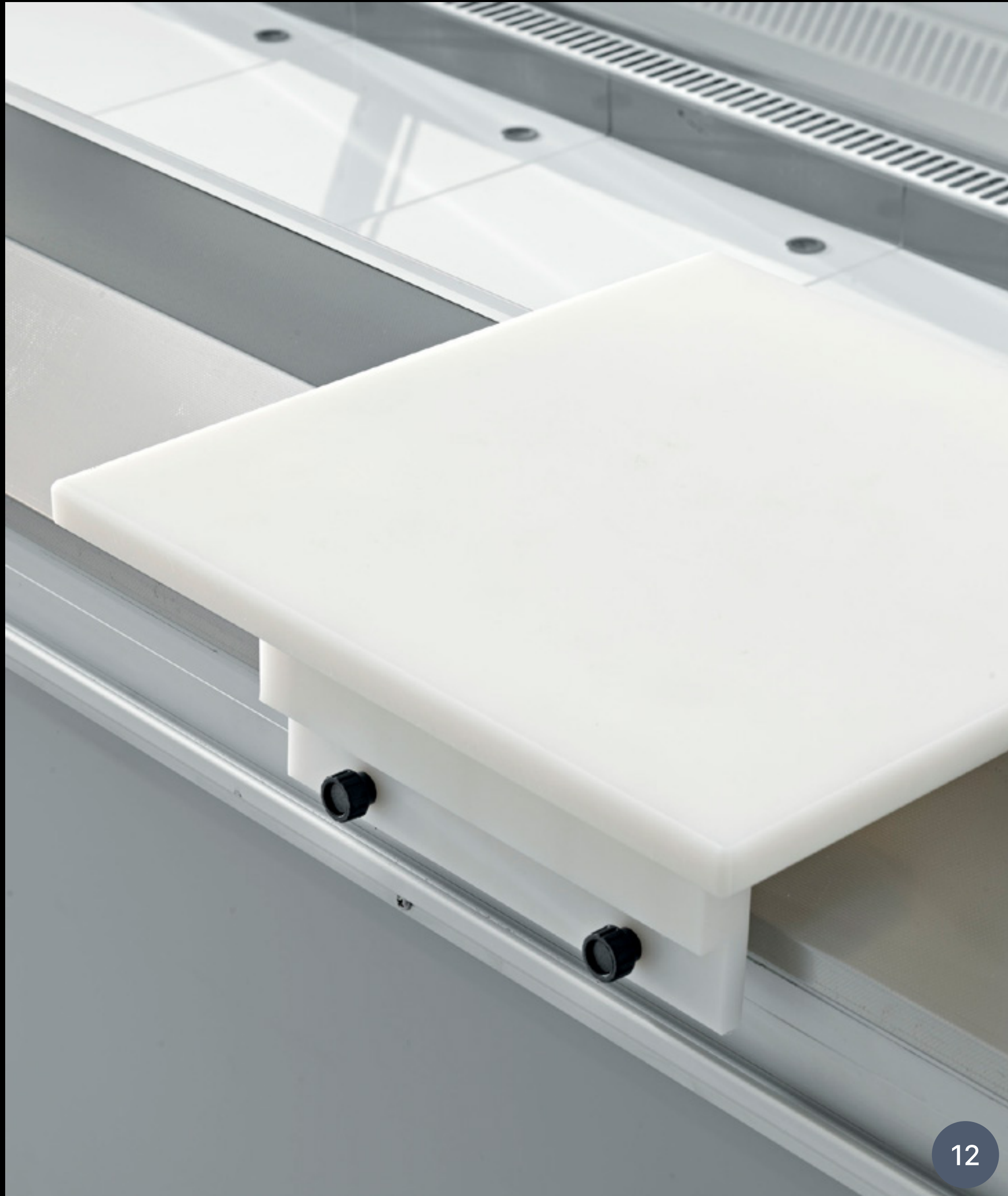


10



11

- 9 - Bread grille
- 10 - Self-service night blind
- 11 - Semi-vertical night blind



12 - Sliding polythene cutting board

13 - Scales holder

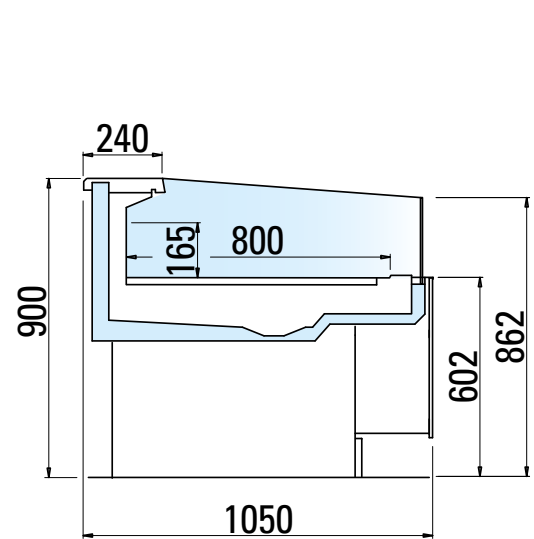
14 - 2-step stainless-steel tray

15 - 3-step stainless-steel tray

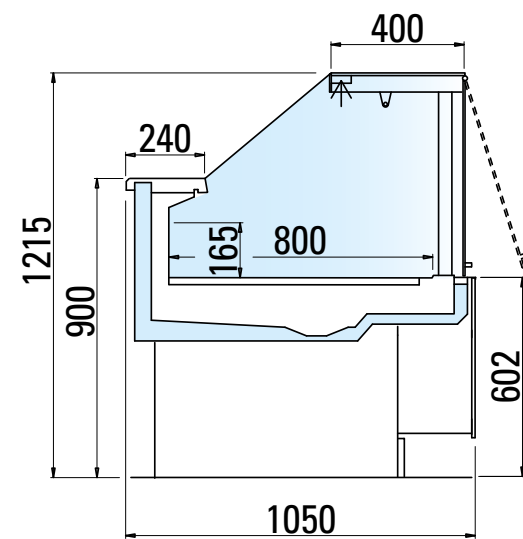


BRISTOL VETR TN V LINEARE R

Length without side panels (mm)		937	1250	1875	2500	3125	3750
Temperature class	3M1	•	•	•	•	•	•
	3M2	•	•	•	•	•	•
Preservation temperature (°C)	0/+2	•	•	•	•	•	•
	+2/+4	•	•	•	•	•	•
Horizontal display area* (m ²)		0,75	1	1,5	2	2,5	3
Energy class**		A T G F	A T G F	A T G F	A T G F	A T G F	A T G F



SELF 80

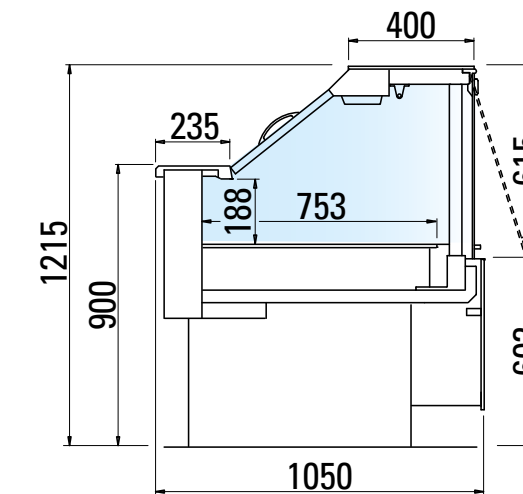


VDA 80

BRISTOL VETR-OM TC LINEARE

Length without side panels (mm)		1250
Stored product temperature (°C)	+2/+4	•
Horizontal display area* (m ²)		0,94

Model not subject to energy labelling.

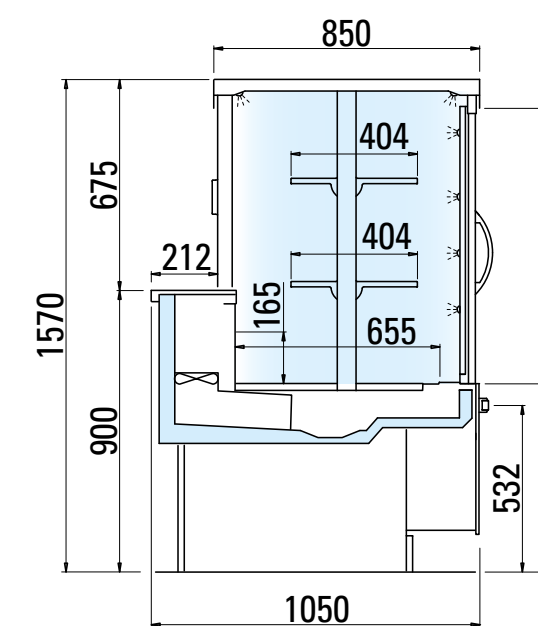
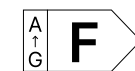


VDA 80

BRISTOL VETR TN V LINEARE TH






Length without side panels (mm)		1250
Temperature class	3M1	•
	3M2	•
Preservation temperature (°C)	0/+2	•
	+2/+4	•
Horizontal display area* (m ²)		1,83

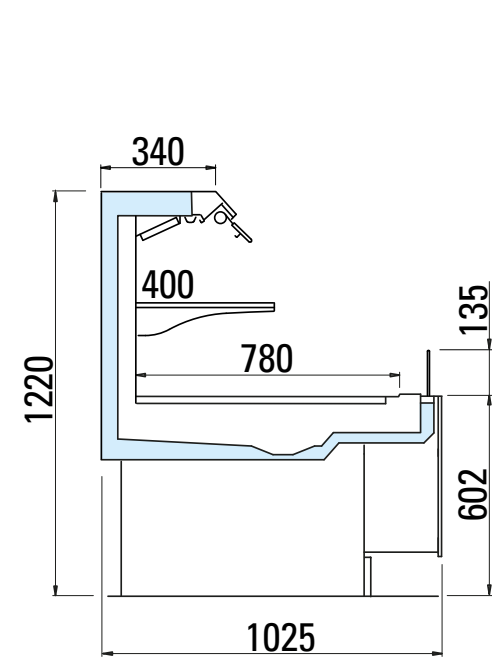
Energy class**



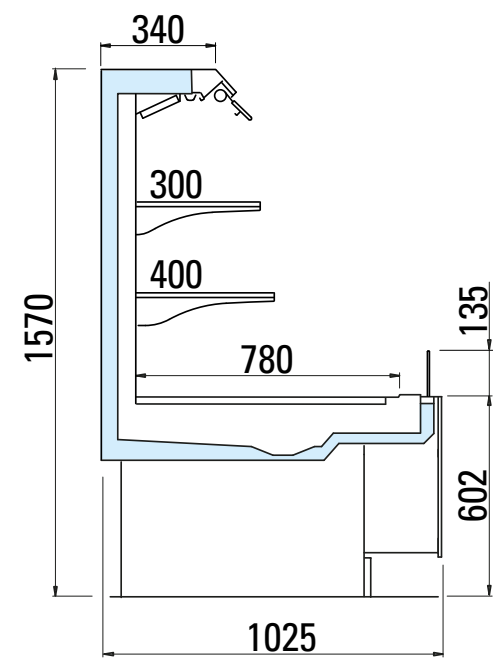
TH 80

BRISTOL SVT-A-1 TN V LINEARE R

Length without side panels (mm)		937	1250	1875	2500	3750	
Height (cm)		122	122	122	122	157	122 157
Temperature class	3M1	•	•	•	•	•	
	3M2	•	•	•	•	•	
Preservation temperature (°C)	0/+2	•	•	•	•	•	
	+2/+4	•	•	•	•	•	
Horizontal display area* (m²)		1,12	1,49	2,24	2,98	3,73	4,47 5,6
Energy class**							



80 H122



80 H157

ED. 01 - 25/01/2024

arneg[®]

WWW.ARNEG.COM



Arneg follows a policy of continuous improvement and reserves the right to update this document at any time without prior notice.