

VERTICAL



ASTANA LX



A
R
N
E
G



HIGH CAPACITY FROM A COMPACT CABINET.

Astana LX is the perfect negative temperature vertical cabinet for focusing attention on frozen food products. Astana LX offers numerous advantages to stores seeking to satisfy the needs of today's and tomorrow's consumers: latest-generation LX design, an impressive display area, thoroughly optimised ergonomics, high efficiency and low consumption.

LX DESIGN: THE ESSENCE OF TRANSPARENCY.





LOADS OF INNOVATION.

A display area 8% larger than standard gives an above average load capacity. This not only saves time in loading and unloading but allows customers to reach the product they want immediately.

LIMITLESS PRACTICALITY.

Astana LX features an ultra-low, flat, front top panel. This innovation permits instant and easy access to the products on display and makes operators' work a whole lot easier too.





- Latest-generation LED lighting
- High energy-efficiency doors
- Large display surface

OSAKA 3 LX

Positive temperature,
with glass doors

PANAMA 3 LX

Positive temperature,
open

ASTANA LX MINI ASTANA LX

Negative temperature,
with glass doors



CONFIGURE YOUR SPACE FOR GROWTH.

Astana LX can be installed alongside other LX wall cabinets to create truly complete sales areas. Continuity in styling and a fluid display configuration offer shoppers a more satisfying experience.



ACCESSORIES

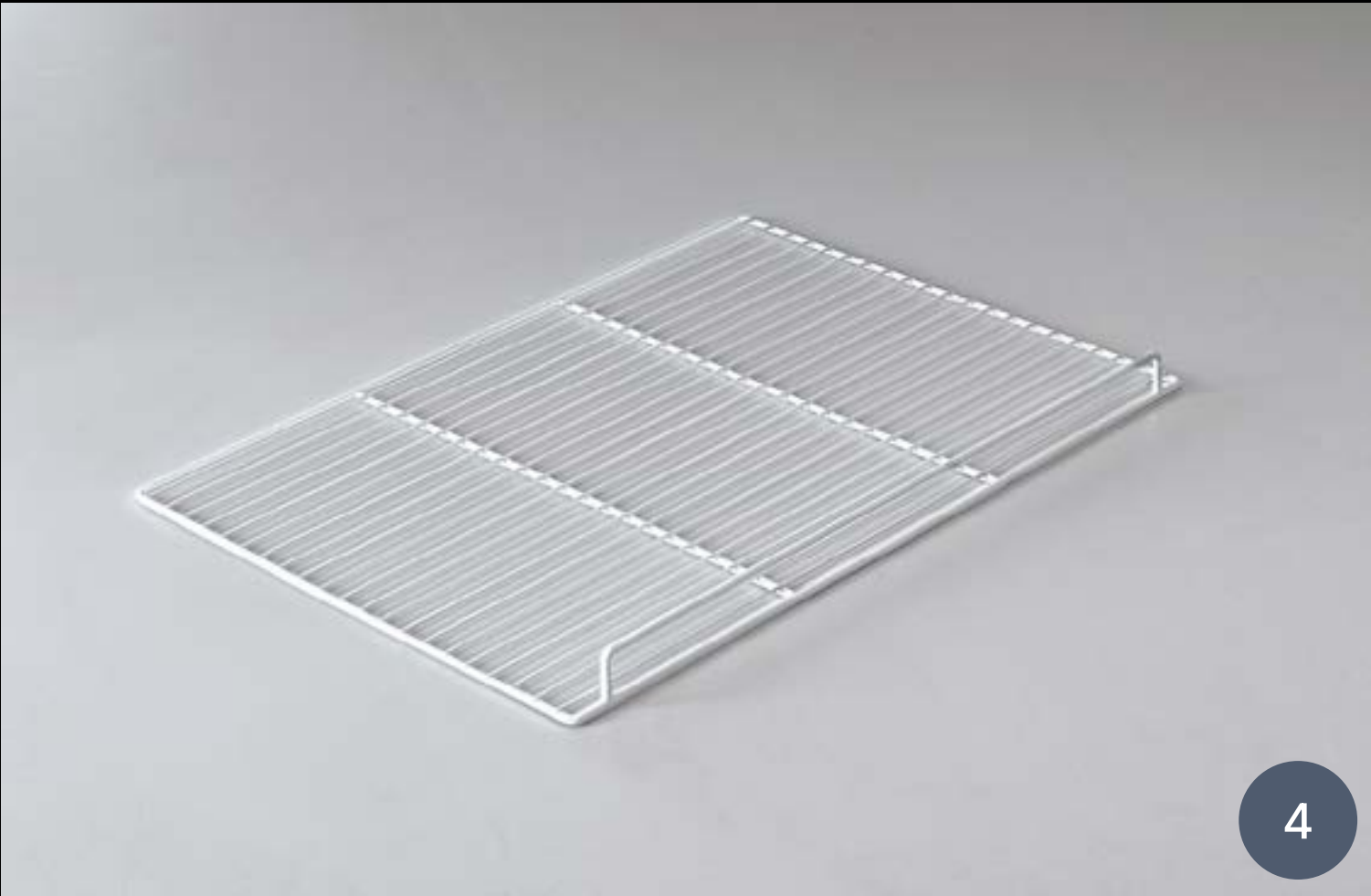
1 - DRVC side

2 - DRCI side





3



4



5

- 3 - LED light
- 4 - Bottom grilles
- 5 - Basket
- 6 - Pull-out basket



6



7

7 - Rectangular bumper

8 - Wire price holder shelf

9 - PVC bumper

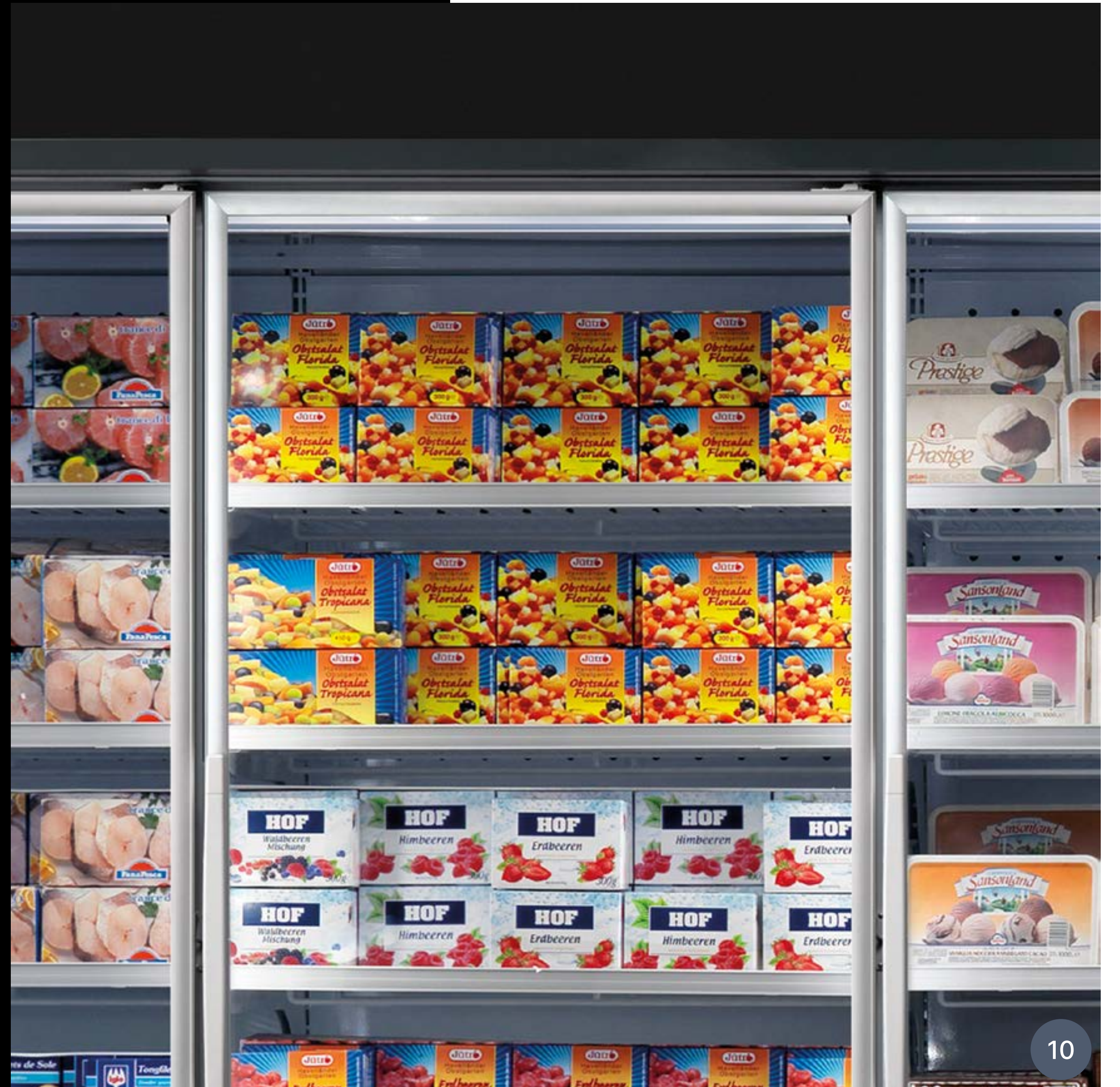
10 - Aluminium doors



8



9

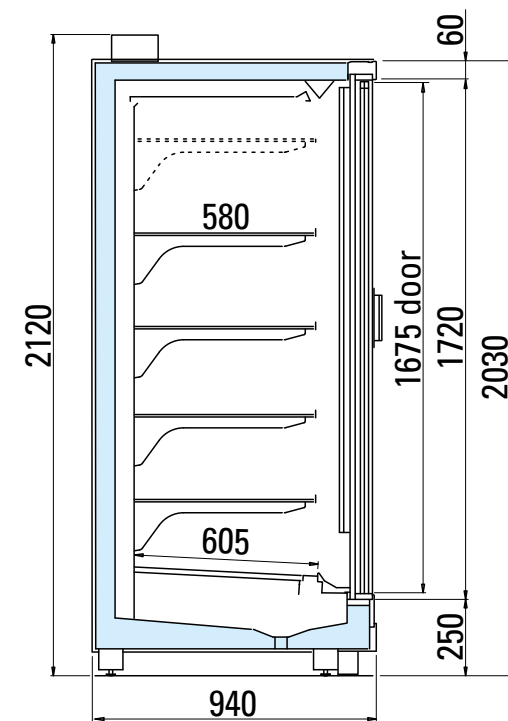


10

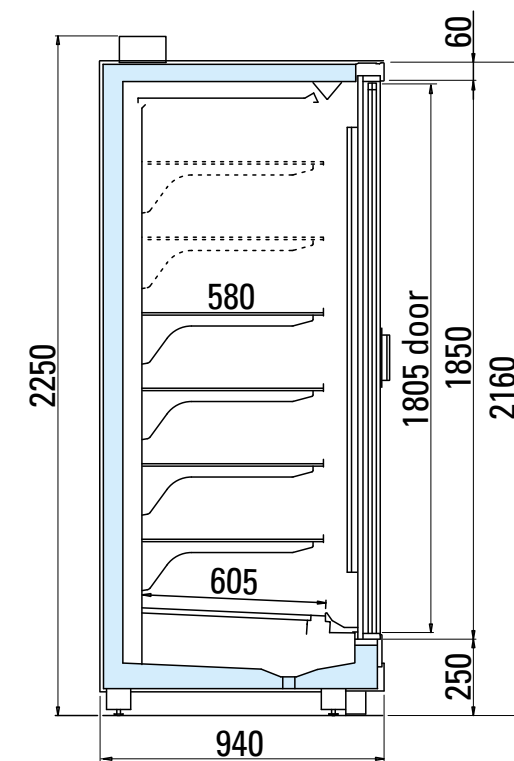
ASTANA LX VRT-C-1 BT V LINEARE R

Length without side panels (mm)		1562		2343		3124		3905	
Height (cm)		203	216	203	216	203	216	203	216
Temperature class	3L1	•		•		•		•	
Preservation temperature (°C)	-22/-25	•		•		•		•	
Horizontal display area* (m ²)		4,57		6,85		9,14		11,42	
Energy class**		A↑ G D		A↑ G D		A↑ G D		A↑ G D	

*Value referred to illustrated configurations. **The energy class may vary depending on the product configuration.



H203



H216

ED. 00 - 21/04/2023

arneg[®]

WWW.ARNEG.COM



Arneg follows a policy of continuous improvement and reserves the right to update this document at any time without prior notice.