



Buzon

very clever...

Google HQ
London



The Project

The current Google HQ, with vast external floor space over several levels.

The decking is a bespoke solid section 230 x 30mm composite, commissioned for this site.

All fixings are hidden, giving a seamless look to the terraces, and clean lines. The main terrace areas are level and by using the DPH slope correction system, the wheelchair access ramps were easily achieved.

A clever feature; the BM Unit travels over the decking, hiding the steel rails below.

This enlarges the overall usable terrace space considerably, and gives uninterrupted views from the entire terrace.

PROJECT DETAILS

Project: Google HQ Offices (Kings Cross Central BI)

Location: London, UK

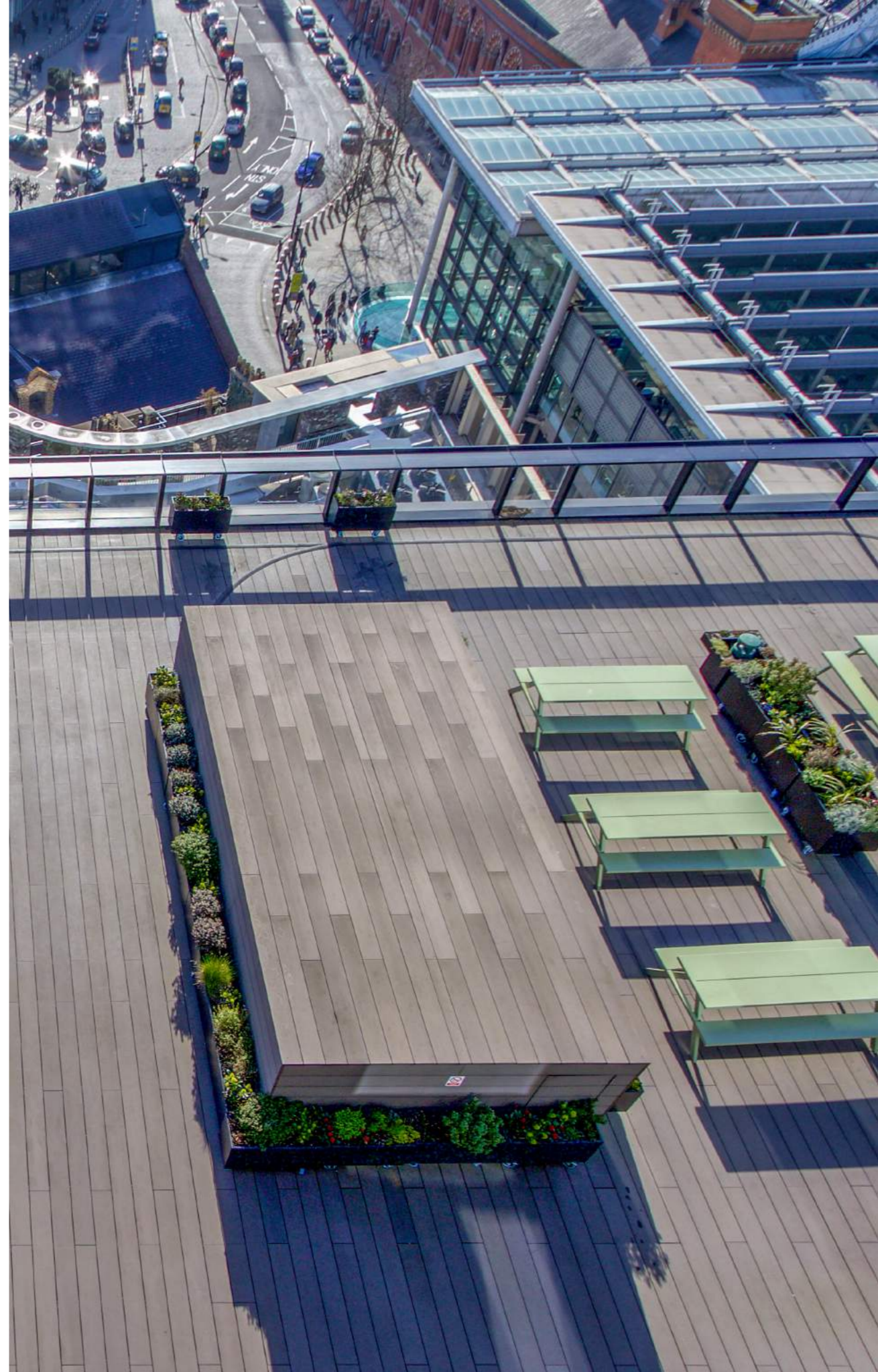
Product: Composite decking

Size: 2,200 SqM

Architect: Adamson Associate

Main Contractor: Vinci Construction

Project status: Completed March 2015





The current Google HQ, with vast external floor space over several levels. The decking is a bespoke solid section 230 x 30mm composite, commissioned for this site.

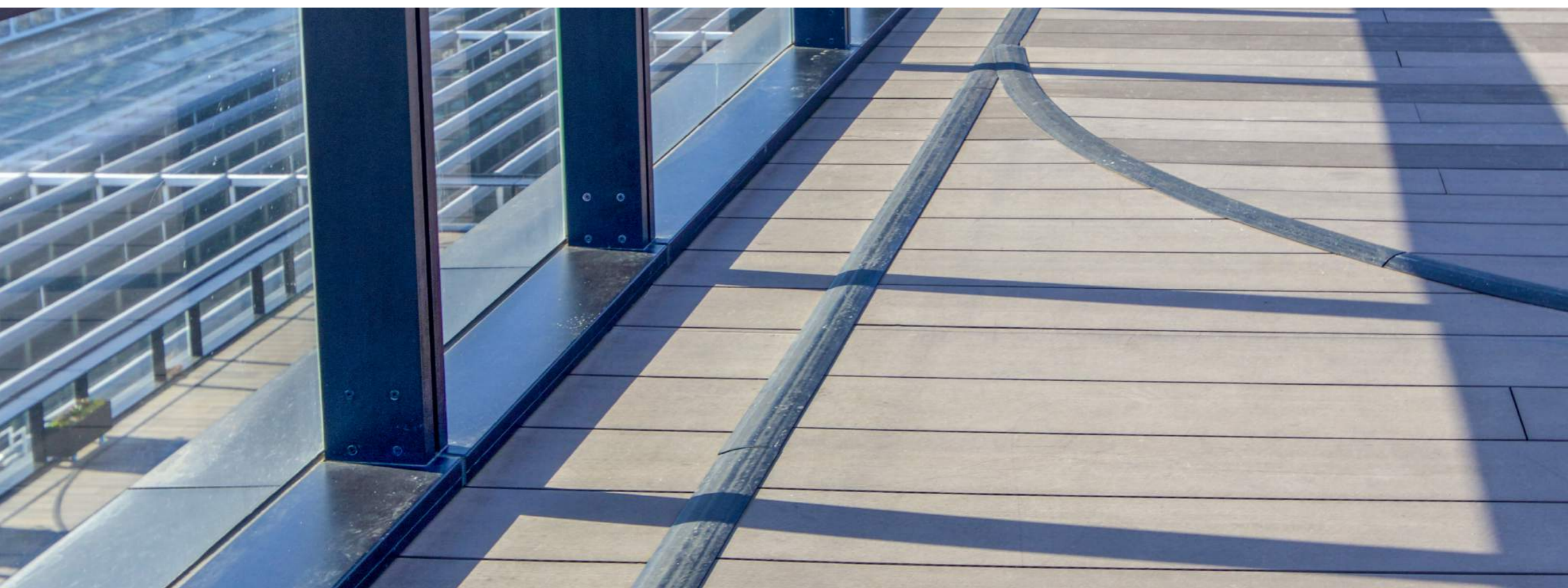


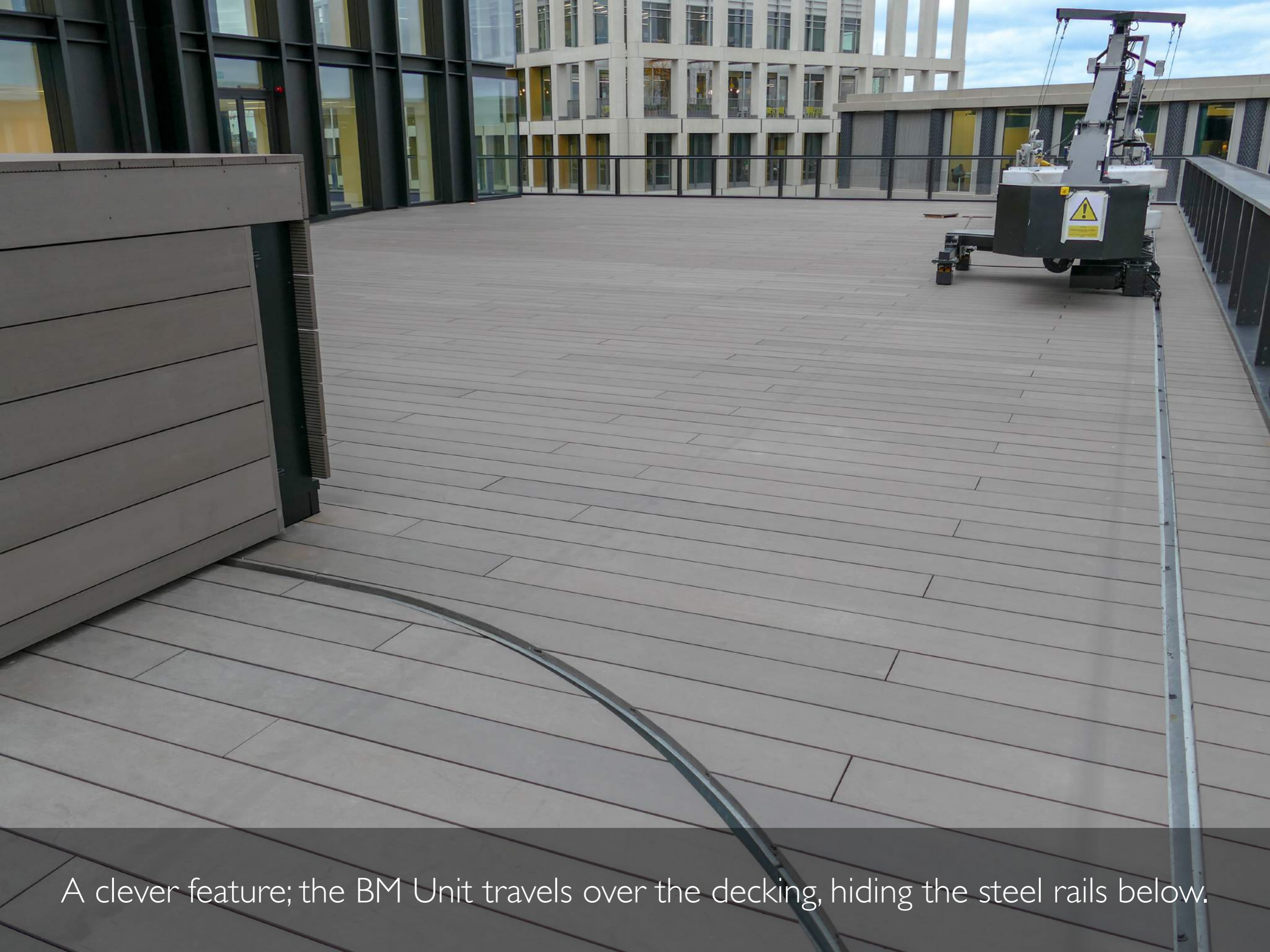


All fixings are hidden, giving a seamless look to the terraces, and clean lines. The main terrace areas are level and by using the DPH slope correction system, the wheelchair access ramps were easily achieved.









A clever feature; the BM Unit travels over the decking, hiding the steel rails below.







very clever...



Buzon UK Ltd
Tel: 020 8614 0874 - sales@buzonuk.com - www.buzonuk.com