



# Technical Data Sheet

## DPH-11-PH5

Adjustable from **645 to 850mm**

### COMPONENTS

DPH-11-PH5 is composed of:

1 x DPH-5-PH5 Head, 1 x DPH-5-PH5 Base,  
3 x DPH-C5 Coupler, 10 x Locking Keys

### CHARACTERISTICS

Head :  $\varnothing$  155mm, 188cm<sup>2</sup>

Base :  $\varnothing$  200mm, 314cm<sup>2</sup>

Weight: 2.092kg

Height adjustable from **65 to 850mm**

Slope corrector is integrated in the head of the pedestal, providing  
slope correction from **0 to 5%** (in 0.5 % intervals)

### MATERIAL

Copolymer polypropylene (CPP)

Composition: **+/- 80%** first grade pre-selected recycled PPC, and

**+/-20%** Talc + Masterbatch black

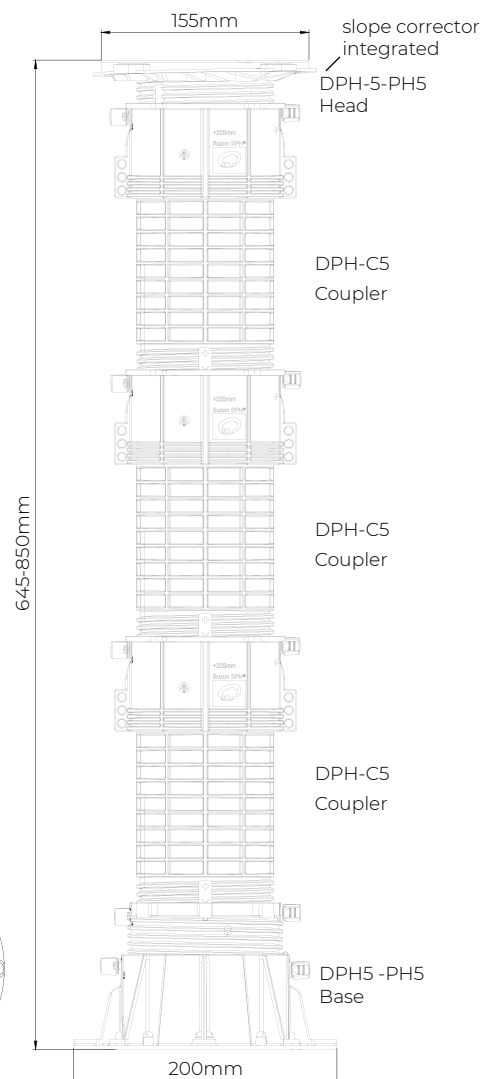
Designed and manufactured in Europe

Use of recycled materials exclusively of EU origin

Resistant to weathering, sea salts, algae and a wide range of chemicals

Temperature range: **-30C° to +80C°**

CAD files are available for download from our [Resource Centre](#)



### COMPRESSION TEST\*

Performed on the full (1/1), half (1/2) and quarter (1/4) surface of the head (1kN= 100 kg= 224.8 lbF)

Position	Height (mm)	Yield strength** (kN)	Yield strength (lbF)	Breaking load (kN)	Breaking load (lbF)
1/1	850	5.5 (550kg)	1,236	11.6 (1,160kg)	2,607
1/2	850	4.5 (450kg)	1,011	8.9 (890kg)	2,000
1/4	850	3 (300kg)	674	5.9 (590kg)	1,326

\* Tests carried out by SIRRIS

\*\* The yield point is the stress from which a material stops deforming in an elastic, reversible manner and thus begins to irreversibly deform (ISO472 :2013)

## APPLICATIONS

Buzon pedestals can be used for a wide range of outdoor applications, such as terraces, pool decks and water features, in landscape areas and on rooftops. Finishing materials can be freely specified by the designer.

Accessories are available for applications with various outdoor finishes, such as granite stone pavers, composite/timber decking, ceramic tiles and fibreglass or metal grating panels. Buzon pedestals can be installed on a wide range of solid and stable substrates, such as concrete slabs, cement screeds, waterproof membranes and insulation panels.

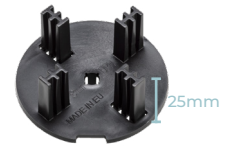
The DPH range has a suite of accessories to support any type of pedestal project:

- Spacer Tabs
- Shims
- Slope Correction
- Edging Products
- Couplers
- Joist Support
- Low Build Up
- Wind Uplift
- Membrane Protection.

### Spacer Tabs



Thickness: 2, 3, 4.5mm and 6mm



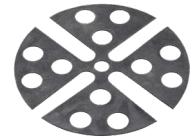
Thickness: 2, 4.5, 6, 8 and 10mm

### Joist Support



Joist Dimension  
Width: 100mm max  
Height: 30mm min

### Shims



U-E10 (1mm)  
U-E20 (2mm)

## PACKAGING

Packaging	DPH-5-PH5 Not Screwed*	DPH-C5 Coupler	Unit
Product per Box	24	24	items
Box Weight	17.20	12.50	kg
Box Dimension	600x400x600	480x400x510	mm
Boxes per Pallet	15	24	qty
Product per Pallet	360	576	items
Pallet Dimension	100x120x220	100x120x220	cm

\* Not Screwed comprises of a separate DPH-5-PH5 Head and Base

## SAFETY INSTRUCTIONS

Buzon pedestals are designed to support external raised floors for pedestrian traffic only and are not designed to support or be subjected to moving and/or vibrating machinery & equipment, including maintenance, cleaning vehicles, automobiles and other similar equipment.

**Contact us if you require further technical support or advice**

**[buzonuk.com](http://buzonuk.com) - [info@buzonuk.com](mailto:info@buzonuk.com) - +44 (0)20 8614 0874**



Buzon has a policy of continuous improvement and reserves the right to modify, revise or change the above specifications without notice. This brochure is for descriptive purpose only and is based on the product as on the date of publication of this information.