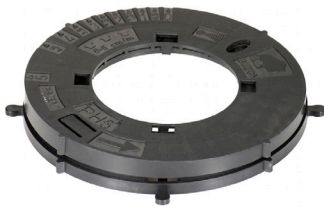




www.buzonuk.com



Technical Data Sheet

DPH-PH5 Slope corrector up to 5%

COMPONENTS

The DPH-PH5 is composed of 2 pieces (mechanically fixed during production).

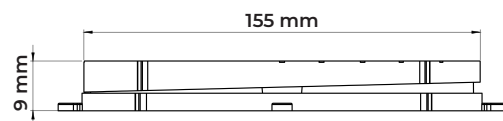
CHARACTERISTICS

Weight: 0,09 kg

Slope corrected from 0 to 5% (in increments of 0.5%).

Additional height: 9 mm

Diameter: 155 mm



MATERIAL

Copolymer polypropylene (CPP)

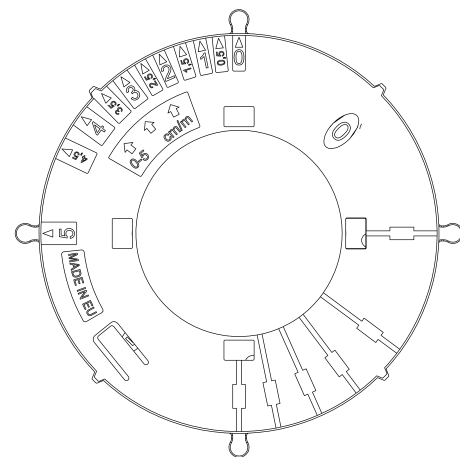
Composition: +/- 80% first grade pre-selected recycled PPC, and +/- 20% Talc + Masterbatch black

Designed and manufactured in Europe

Use of recycled materials exclusively of EU origin

Resistant to weathering, sea salts, algae and a wide range of chemicals

Temperature range: -30 °C to +80 °C



PACKAGING

Pieces per carton: 120 pcs

Carton weight: 11,74 kg

Carton dimension: 520 x 350 x 410 mm

Cartons per pallet: 35 pcs

Pieces per pallet: 4200 pcs

Pallet dimensions: 100 x 120 x 220 cm

APPLICATIONS

The DPH-PH5 slope corrector is placed on top of the pedestals and making possible to compensate for slopes of 0 to 5% by simple rotation (in increments of 0,5%).

By placing the DPH-PH5 slope corrector above the Buzon pedestal, the height of application is increased by 9mm.

Can be used on top of all DPH pedestals without a slope corrector and on all BC pedestals.

SAFETY INSTRUCTIONS

Buzon pedestals and accessories are designed to support external raised floors for pedestrian traffic only and are not designed to support or be subjected to moving and/or vibrating machinery & equipment including maintenance, cleaning vehicles, automobiles and other similar equipment.