

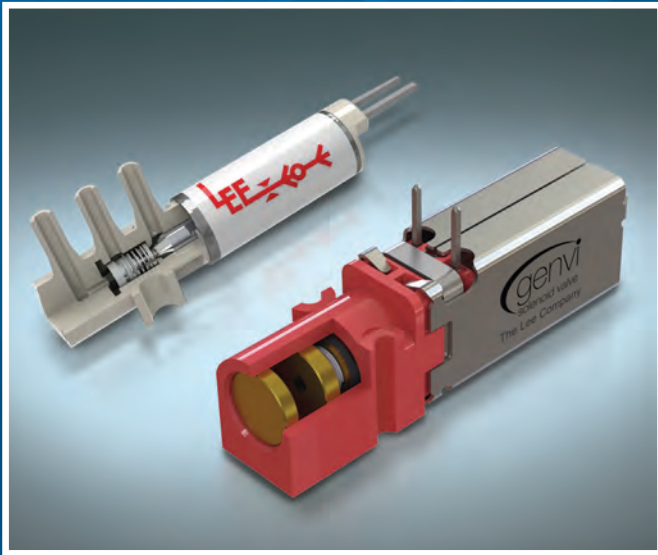
CONTROL SOLENOID VALVES



YOUR SPECS
OUR EXPERTISE
GREAT **SOLUTIONS**
FOR YOUR APPLICATION



THE LEE ADVANTAGE



HISTORICAL PEDIGREE IN FIELD-PROVEN INNOVATION

When application demands change, you need a valve supplier who can respond quickly. The Lee Company has been at the forefront of fluid control technology since our inception. Ongoing research, design, and development help us advance solenoid valve performance, transforming challenges into deliverable solutions across a wide range of life-saving applications where superior reliability and versatile performance are critical. For decades, best-practice design principles, extensive in-house resources, and rigorous qualification testing have ensured that every Lee product is fully proven. This commitment to quality and innovation fosters creativity and drives our capabilities forward to offer the best control solenoid valves available.

COMMITMENT TO QUALITY AND RELIABILITY

Quality at The Lee Company is a company-wide, management-driven commitment. We invest heavily in facilities, people, and state-of-the-art equipment, enabling us to perform all machining, assembly, and testing in-house.

Every component is 100% functionally tested prior to shipment to ensure the highest levels of reliability and repeatability. This commitment to end-to-end quality control ensures that Lee products will consistently meet and exceed the performance demands of all applications.



ENGINEERED FOR YOUR REQUIREMENTS

We offer a broad line of standard control solenoid valves, but meeting the exact requirements of a particular application often requires a custom solution. Just tell us your needs, and we'll provide the ideal combination of performance, materials, electrical specifications, and fluidic interface you require. And to facilitate that process, our worldwide sales force of degreed engineers stands ready to provide fast, accurate technical assistance to help you find the best solution for your fluid control challenges.



CONTROL SOLENOID VALVES

Innovation and the ability to adapt technology to meet quickly evolving needs has enabled The Lee Company to remain a leader in miniature fluid control since 1948. We offer the most compact, efficient, and reliable solenoid valves available. With our wide range of capabilities, our products can be tailored to meet even the most demanding applications.

HIGH PERFORMANCE

Low leakage, fast response, low power, high flow rates, and a variety of material options available for use across a wide range of temperatures and pressures.



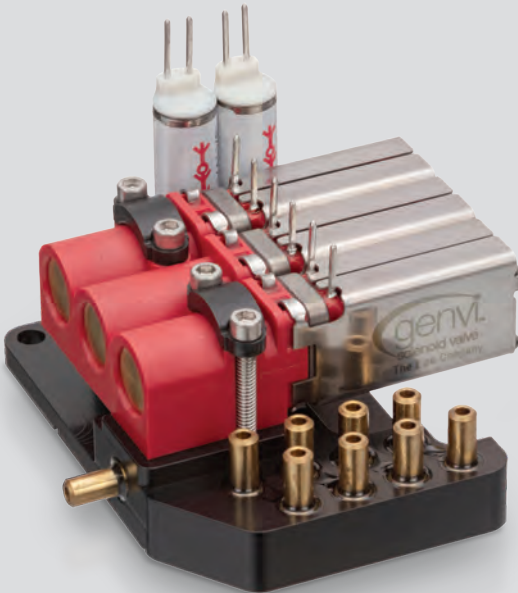
COMPACT DESIGN

Valves can be mounted in tight spaces and onto compact, multi-valve manifolds which conserves instrument space.



EXTREME RELIABILITY

Each valve is 100% tested to ensure consistent, reliable performance over millions of cycles.



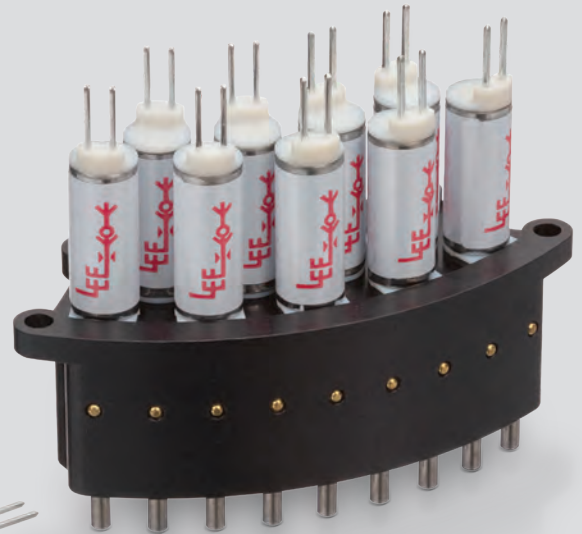
MANIFOLD INTEGRATION

Manifolds are fully assembled, tested, and optimized for specific application requirements.



DESIGN FLEXIBILITY

2-port and 3-port configurations in conventional, quiet operation, or latching models. Multiple mounting options available for manifold or soft tube connections.



FOR MORE DETAILS, VISIT www.theleeco.com/control

DIAGNOSTICS



Precision and reliability are vital in microfluidic applications where small volumes of air must be tightly controlled to pilot delicate samples across a membrane or through a microfluidic card. Lee components provide a wide range of benefits to help overcome design challenges in these instruments.

CAPABILITIES

- ⬡ Low power reduces thermal concerns
- ⬡ Fast response time accelerates sample processing
- ⬡ Low leakage reduces compressor demand
- ⬡ Compact size is ideal for mounting multiple valves

APPLICATIONS

- ⬡ Molecular Diagnostics
 - Sample Prep
 - Amplification (PCR)
 - Sequencing
- ⬡ Hemostasis

RESPIRATORY THERAPY

Component size, power, response time, and affordability are all held to strict requirements in most respiratory applications, where portability and reliability are extremely important. Lee engineering delivers on all accounts, helping designers achieve aggressive system-level goals.

CAPABILITIES

- ⬡ High flow enables flexible oxygen delivery rates & improves venting efficiency
- ⬡ Low power prolongs battery life & improves portability
- ⬡ Flexible seal material options extend compatibility with anesthetics
- ⬡ Low leakage improves measurement accuracy when blending & delivering gases

APPLICATIONS

- ⬡ Oxygen Concentrators
- ⬡ Mechanical Ventilators
- ⬡ Anesthesia Delivery
- ⬡ Metabolic Monitors



MEDICAL EQUIPMENT



When designing medical equipment for treating patients at their bedside or for training health care professionals, designers are often looking for versatile performance. Lee products feature low actuation noise, small size, and high reliability, which significantly improve patient comfort and allow for realistic and educational patient simulations.

CAPABILITIES

- ⬢ Quiet operation improves patient comfort & simulation accuracy
- ⬢ Compact size allows space for additional features
- ⬢ Low power prolongs battery life
- ⬢ Wide range of flow capabilities offers design flexibility

APPLICATIONS

- ⬢ Compression Therapy
- ⬢ Patient Simulators
- ⬢ Renal Dialysis
- ⬢ Blood Pressure Monitoring
- ⬢ Apheresis Systems

ENVIRONMENTAL AND BREATH ANALYZERS

Reliable fluid control is critical when collecting air and gas samples during exhaled breath testing, or when analyzing gases in the environment. Our low power, miniature control solenoid valves meet the design challenges of these applications with ease.

CAPABILITIES

- ⬢ Latching valves do not require power to hold state
- ⬢ Miniature size ideal for portable, handheld devices
- ⬢ Various customizable options to meet a wide range of temperatures & pressures
- ⬢ High reliability & extensive cycle life minimizes field maintenance

APPLICATIONS

- ⬢ Cannabis & Alcohol Breathalyzers
- ⬢ Gas Detection
- ⬢ CO₂ Monitoring
- ⬢ Chemical Detection



COMPLETE FLUID CONTROL

The Lee Company is wholly dedicated to high-precision fluid control. We offer a wide range of solutions, all engineered to deliver the highest levels of reliability and performance.



Precision Dispense Pumps

- Self-Priming
- Maintenance-Free
- Wide Range of Dispense Volumes
- High Dispense Accuracy & Repeatability
- Long Cycle Life



Dispense Solenoid Valves

- 2-Way Axial Flow Design
- Low Internal Volume
- Fast Response Time
- Multiple Seal Materials Available
- Long Cycle Life



Isolation Solenoid Valves

- 2-Way & 3-Way Designs
- Chemically Inert
- Diaphragm & Pinch Tube Models
- Low Internal Volume
- Multiple Seal Materials Available



Nozzles

- Atomizing (Airless & Air Assisted) and Dispensing Designs
- Multiple Mounting Options
- Wide Range of Orifice Sizes
- Easy Integration with Lee Dispense Solenoid Valves



MINSTAC®

- Miniature Inert System of Tubing & Components
- Compatible with Many Lee Miniature Solenoid Valves, Dispense Pumps, & Nozzles
- Compact Size
- Wide Variety of Mounting Sizes & Options Available



Manifold Assembly Technology

- Design Flexibility
- Wide Variety of Material Options & Techniques
- Integrated Components
- Reduced Assembly & Installation Costs
- Value-Added Solution, 100% Tested



2 Pettipaug Rd, Westbrook CT 06498-0424
860-399-6281 | 1-800-LEE-PLUG | www.theleeco.com

WESTBROOK • LONDON • PARIS • FRANKFURT • MILAN • STOCKHOLM