

# Contemporary Foot Rail Bracket

2" OD

Contemporary bar rail brackets combine a modern appearance with the ability to be mounted to the bar face or to the floor in front of the bar.



Attaches to the face of the bar or to the floor



Stylish, modern appearance.



Most versatile bracket option.

## Standard Finishes

		
Brushed Brass	Polished Brass	Brushed Stainless
		
Polished Stainless	Antique Brass	Matte Black
		
Gunmetal Grey	Sunset Copper	Oil Rubbed Bronze

## Custom Order Finishes


Blackened Steel

Custom finishing is available upon request.

## Dimensions

(W)	Width	7.125"
(D)	Diameter	2.01"
(CP)	Center Point	6.00"

## Included Hardware

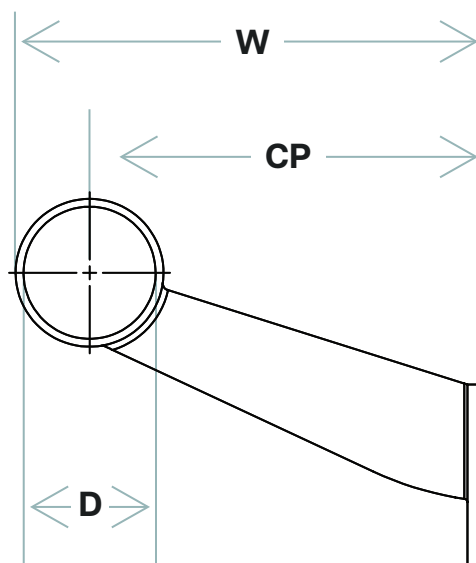
(4)	#10 1-1/2" Mounting Screws
(1)	#8 3/4" Self-Drilling Set Screw

## Installation

1. Measure and mark holes for mounting screws.
2. Attach brackets to the face of the bar with the 4 mounting screws.
3. Secure tubing to bracket by fastening set screw through hole in the bottom of bracket.

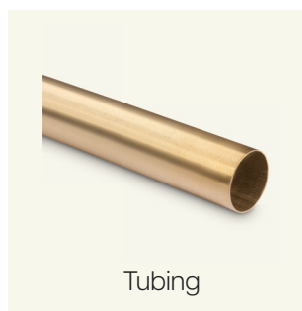
Care and maintenance varies by finish. Given the nature of the product, typical wear and tear may be noticed with your bar rail over time, such as scuffs, scratches, and dirt.

Visit [Kegworks.com/care-guide](https://www.kegworks.com/care-guide) to read our guide on how to properly prep, clean, and maintain all bar rail finishes.



## Complete The System

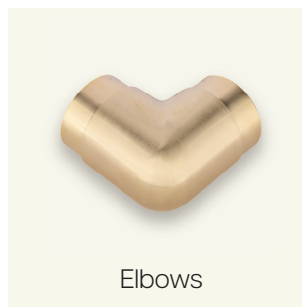
Make sure to get all the necessary components to complete your bar rail system.



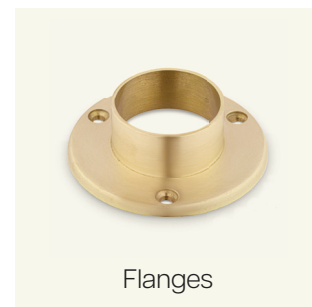
Tubing



End Caps



Elbows



Flanges