

Wall Flange

2" OD

When you need to start or finish a run of bar foot rail at a wall, this flange secures bar rail tubing to flat surfaces.



Mounts to wall with three included screws.



Tubing just slides into flange opening.



Holds tubing securely.

Standard Finishes



Brushed Brass



Polished Brass



Brushed Stainless



Polished Stainless



Antique Brass



Pewter



Matte Black



Gunmetal Grey



Sunset Copper



Oil Rubbed Bronze

Custom Order Finishes



Antique Bronze



Antique Copper

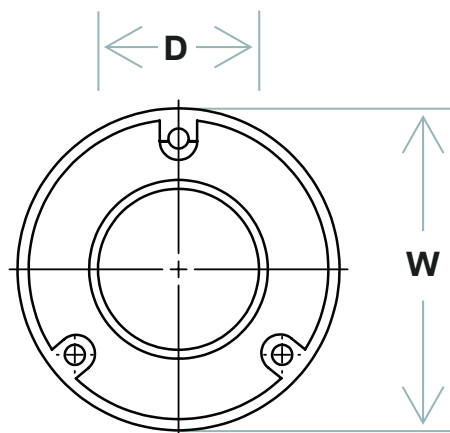
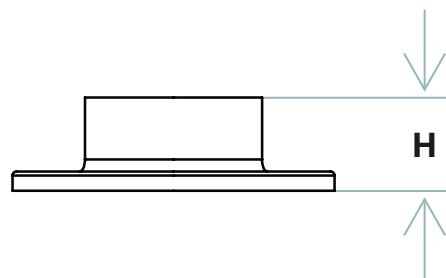


Blackened Steel

Custom finishing is available upon request.

Dimensions

| | | |
|-----|----------|-------|
| (H) | Height | 1.16" |
| (D) | Diameter | 2.01" |
| (W) | Width | 4.00 |

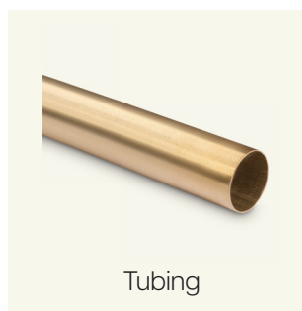


Installation

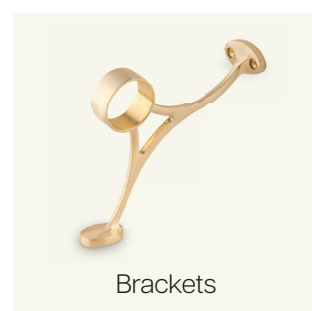
1. Secure bar rail tubing to bar face.
2. Insert end cap into the end of bar rail tubing.
3. End cap will fit loosely into the tubing. Use adhesive for a more secure, permanent fit.

Complete The System

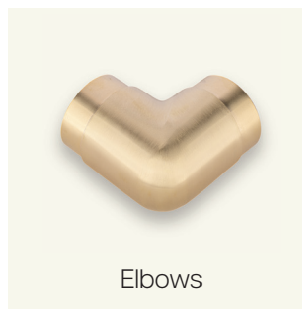
Make sure to get all the necessary components to complete your bar rail system.



Tubing



Brackets



Elbows



End Caps

Care and maintenance varies by finish. Given the nature of the product, typical wear and tear may be noticed with your bar rail over time, such as scuffs, scratches, and dirt.

Visit [Kegworks.com/care-guide](https://www.kegworks.com/care-guide) to read our guide on how to properly prep, clean, and maintain all bar rail finishes.