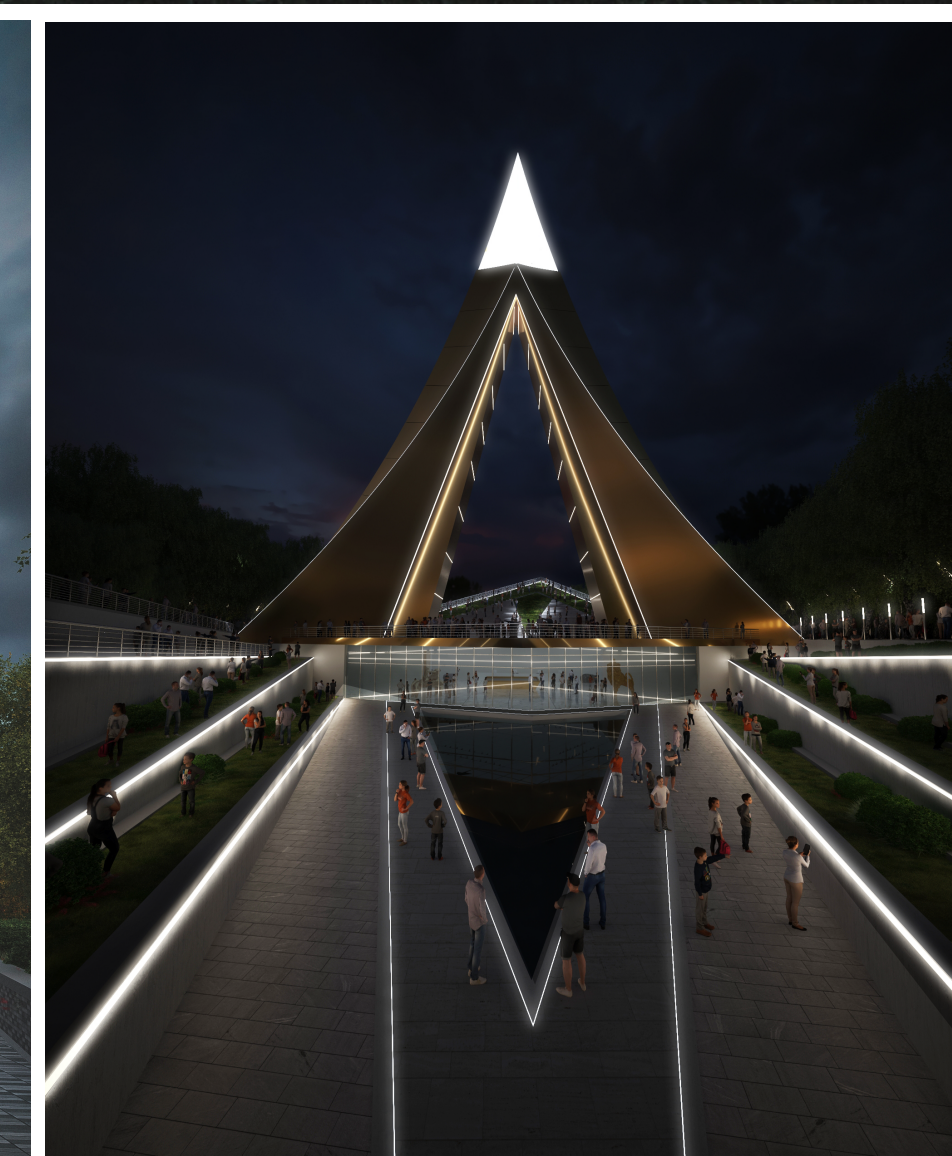
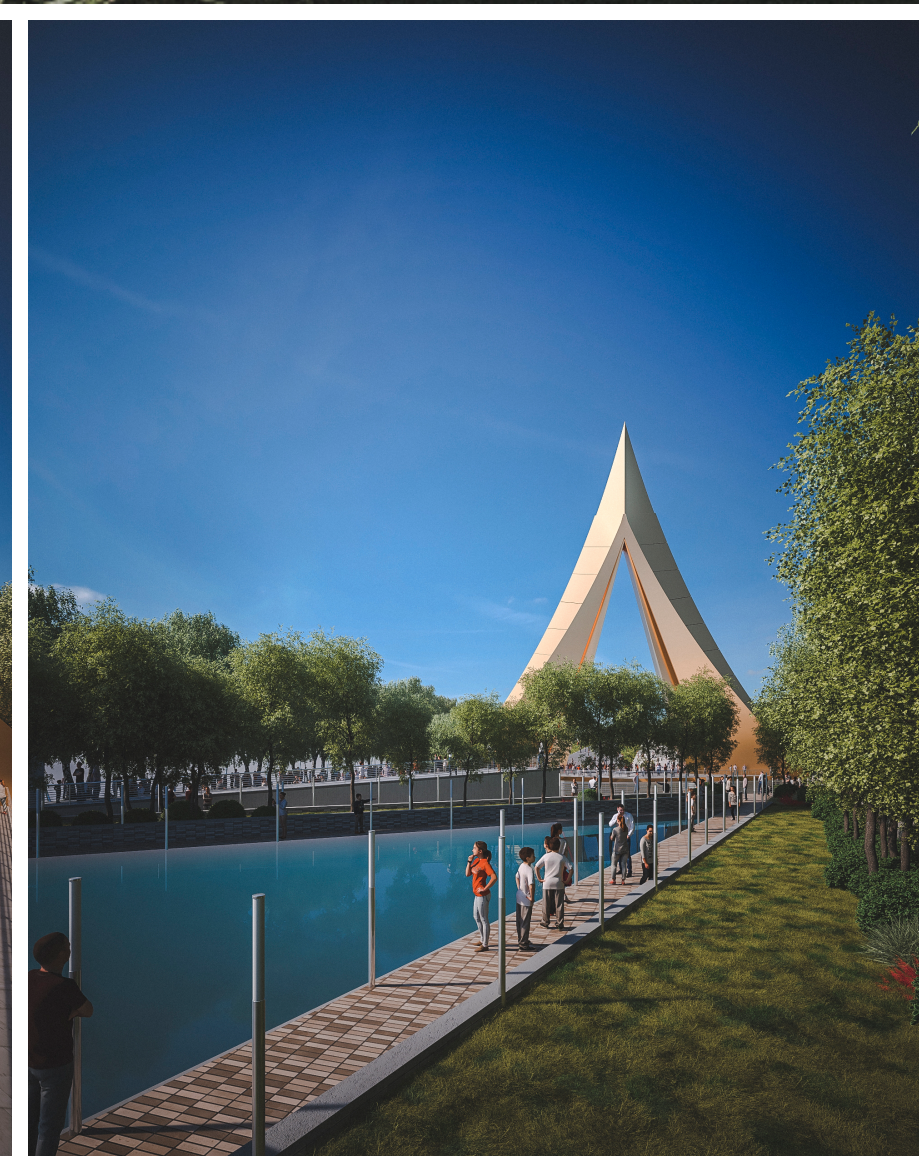


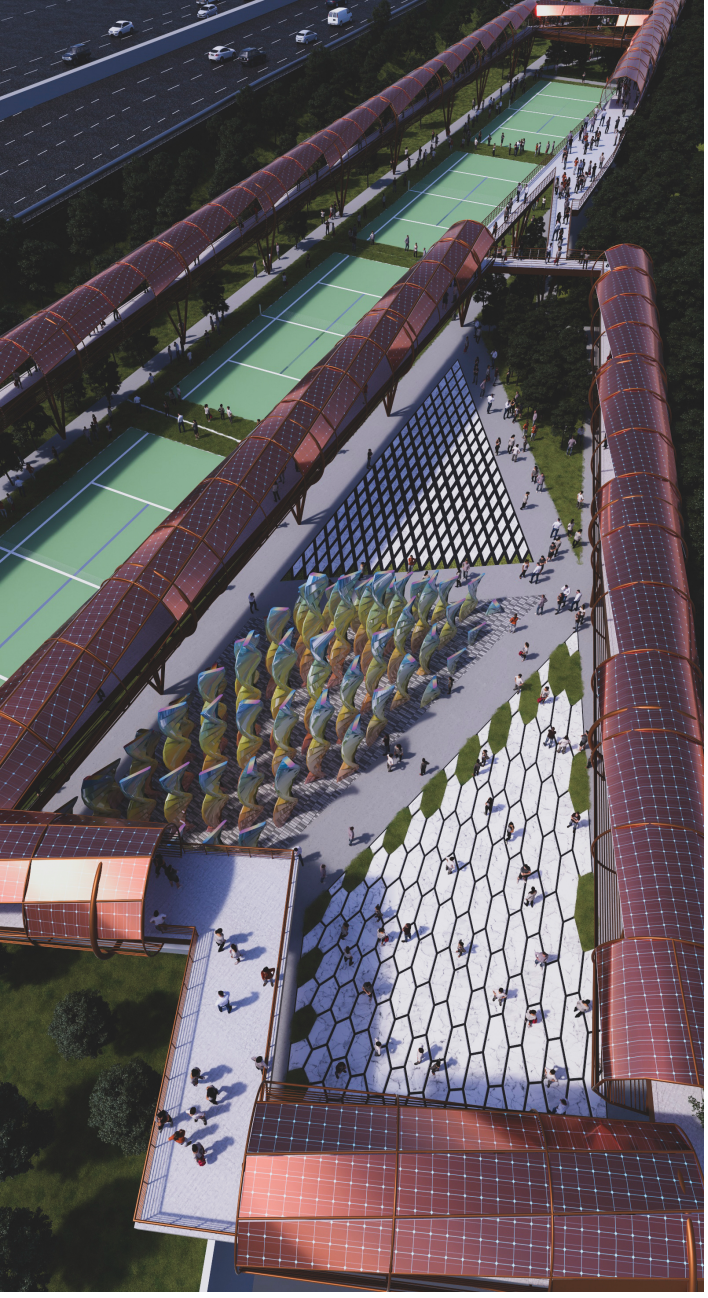


THE MONOLITH

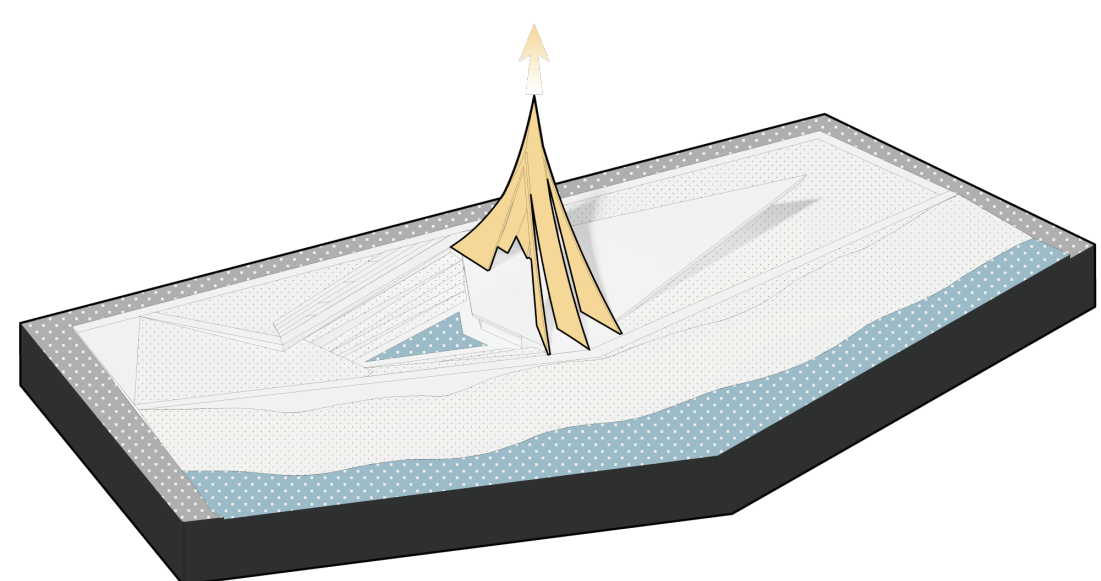
THE MONOLITH IS THE PHYSICAL REPRESENTATION OF SILICON VALLEY. ONE ELEMENT OF THE MONOLITH RISES ABOVE GROUND TO MEET THE SKY, WHICH SPEAKS TO SILICON VALLEY AND ITS PLACE IN THE WORLD ABOVE ALL ELSE AS THE LEADER IN INNOVATION. THE SECOND ELEMENT OF THE MONOLITH STRETCHES OUT DIAGONALLY POINTING NORTH, WHICH SPEAKS DIRECTLY TO THE PEOPLE AND CULTURE OF SILICON VALLEY. A CULTURE OF LOOKING BEYOND TODAY INTO THE FUTURE, ALWAYS STRIVING TO PUSH FORWARD AND INNOVATE. FOR DECADES, SILICON VALLEY HAS BEEN THE GOLDEN STANDARD OF A SOCIETY OF INNOVATORS, THE MONOLITH WILL SERVE AS A CONSTANT REMINDER.

THE STRUCTURE MEETS THE REQUIREMENT OF BEING MONUMENTAL AND UNIQUE, PROVIDING STRIKING-YET DIFFERENT VIEWS FROM EVERY ANGLE AND DEPENDING ON DIFFERENT TIMES OF THE DAY AND NIGHT. THE MONUMENTAL STRUCTURE, AN ARCHITECTURAL AS WELL AS ENGINEERING MARVEL WILL ALSO CONTAIN TWO LARGE ELEVATORS BUILT INTO IT THAT WOULD ALLOW FOR GUESTS TO GET TO THE TOP WHERE THEY WILL HAVE PANORAMIC VIEWS OF THE ENTIRE VALLEY. ON THE SMALLER EAST SIDE SITE, THE ADDITION OF AN ELEVATED, COVERED WALKING PATH AS WELL AS AREAS FOR LOCAL ARTISTS TO SHARE THEIR WORK WITH THE COMMUNITY WILL HELP TURN THE LOCATION INTO MORE OF A POINT OF INTEREST FOR LOCALS AS WELL AS VISITORS.

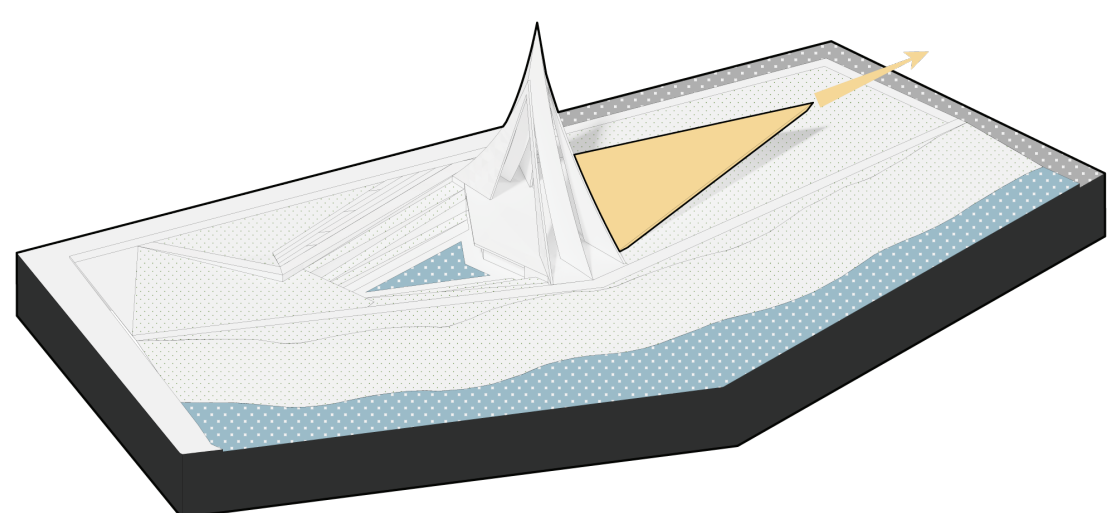




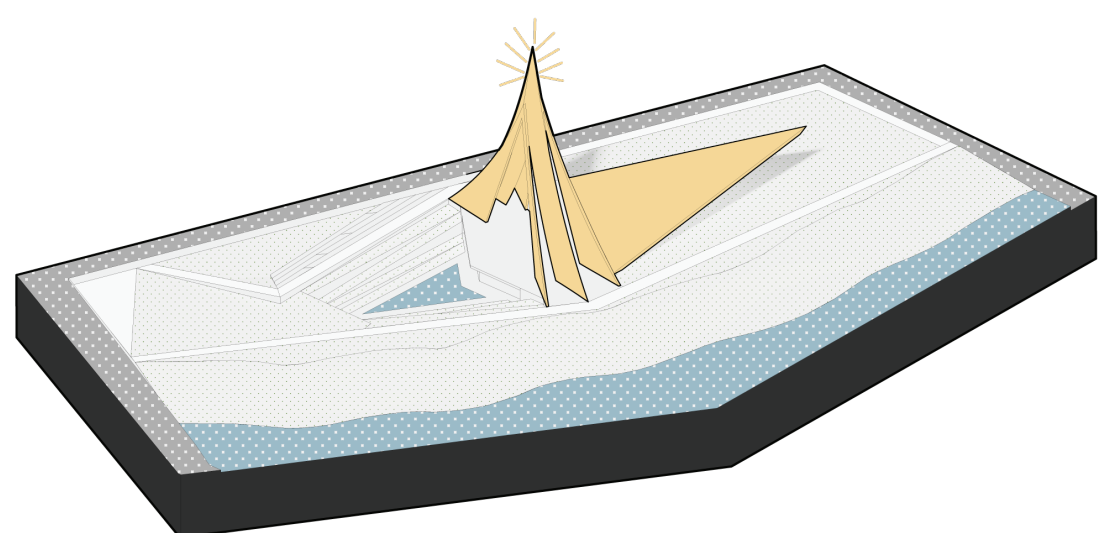
EAST SIDE SITE



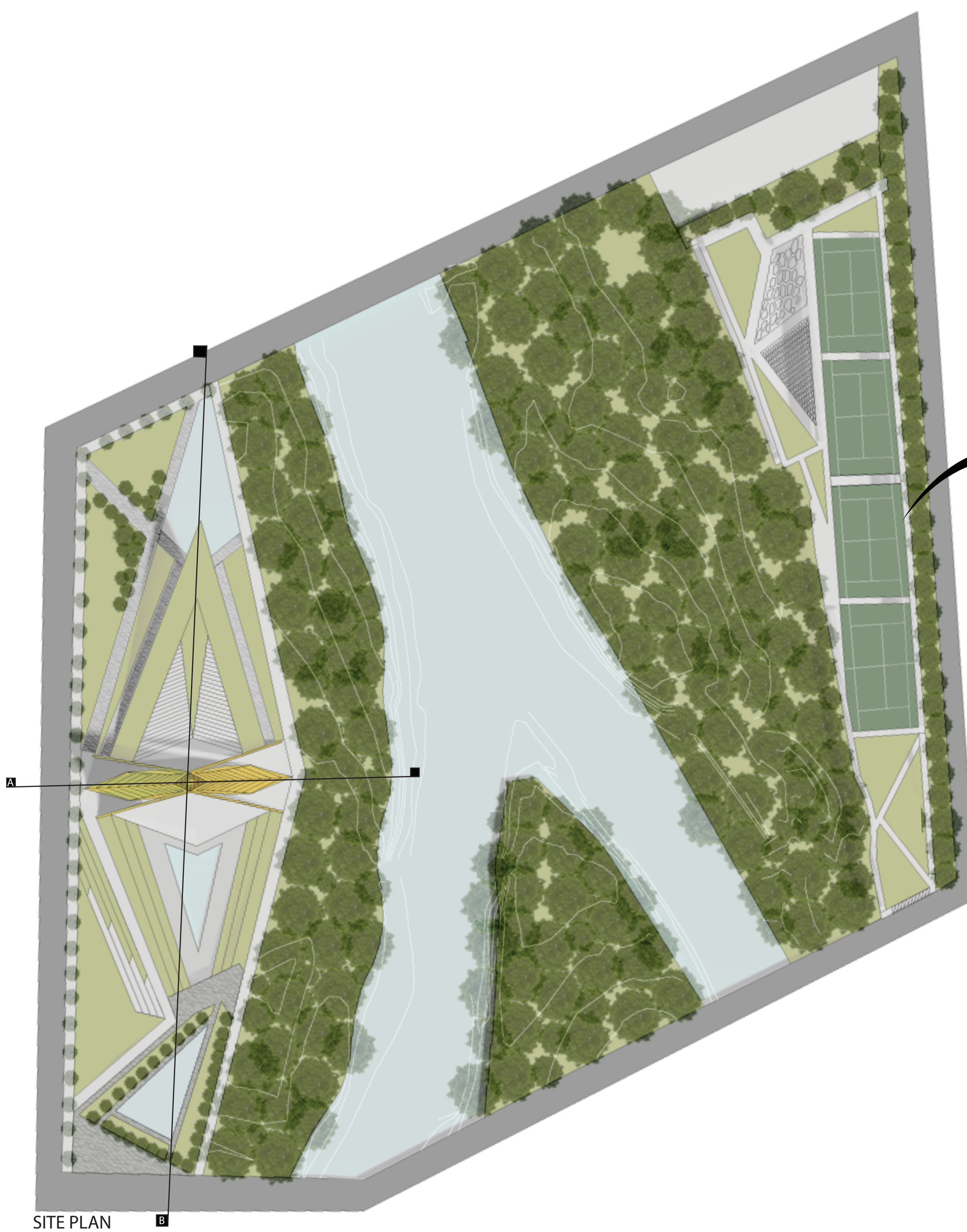
THE FIRST PART OF THE MONUMENTAL STRUCTURE RISES OUT OF THE GROUND 200' INTO THE AIR. SILICON VALLEY HAS FOR DECADES STOOD ABOVE THE REST OF THE WORLD AS LEADERS IN INNOVATION. THE THREE DIFFERENT ELEMENTS OF THIS PART OF THE MONUMENT COME TOGETHER AT THE TOP, AS THE PAST, PRESENT AND FUTURE AND THE ROLE THEY ALL PLAY IN HELPING SILICON VALLEY RISE ABOVE THE REST OF THE WORLD.



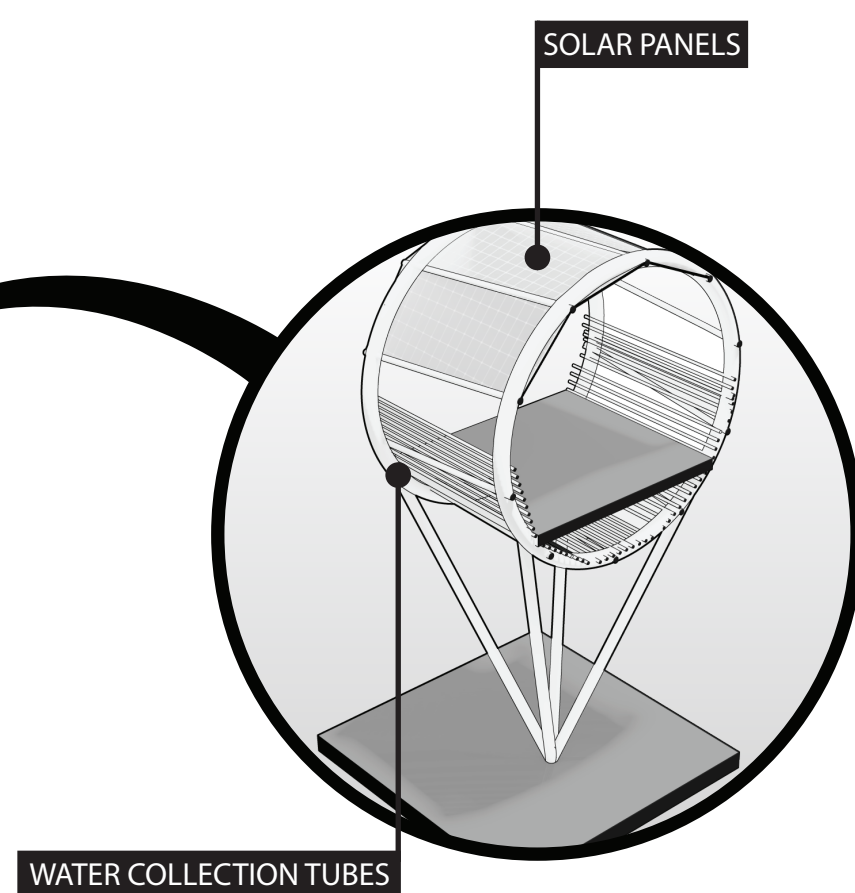
THE SECOND PART OF THE MONUMENTAL STRUCTURE STRETCHES OUT DIAGONALLY HEADING NORTH. THIS SECONDARY ELEMENT SPEAKS TO THE PEOPLE AND CULTURE OF SILICON VALLEY. A CULTURE OF LOOKING BEYOND TODAY AND INTO THE FUTURE OF WHAT CAN BE. NEVER SETTLING FOR WHERE WE ARE TODAY BUT PUSHING BEYOND, ALWAYS STRIVING TO MOVE FORWARD.



THE PROJECT SERVES AS THE PHYSICAL REPRESENTATION OF SILICON VALLEY. TOGETHER THE MONUMENTAL STRUCTURE SPEAKS TO GOING ABOVE AND BEYOND. IT SERVES AS A REMINDER AS WELL AS A CELEBRATION OF THE AREA, THE CULTURE AND IT'S PEOPLE. A LARGER THAN LIFE MONUMENT USING INOVATIVE AND IMPRESSIVE STRUCTURE TO STAND OUT AS A TRULY UNIQUE MONUMENT.

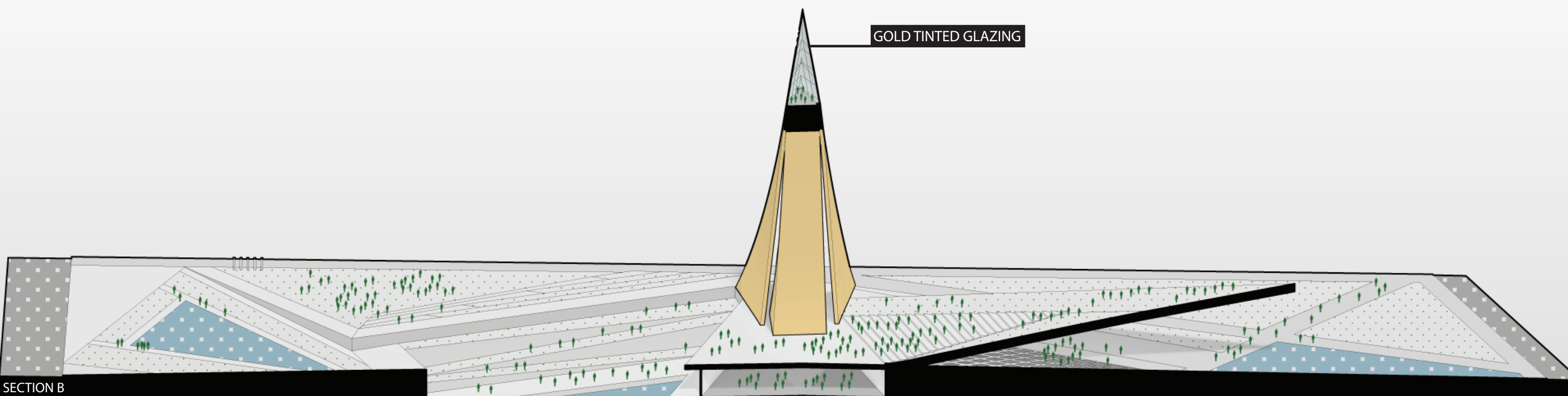


SITE PLAN

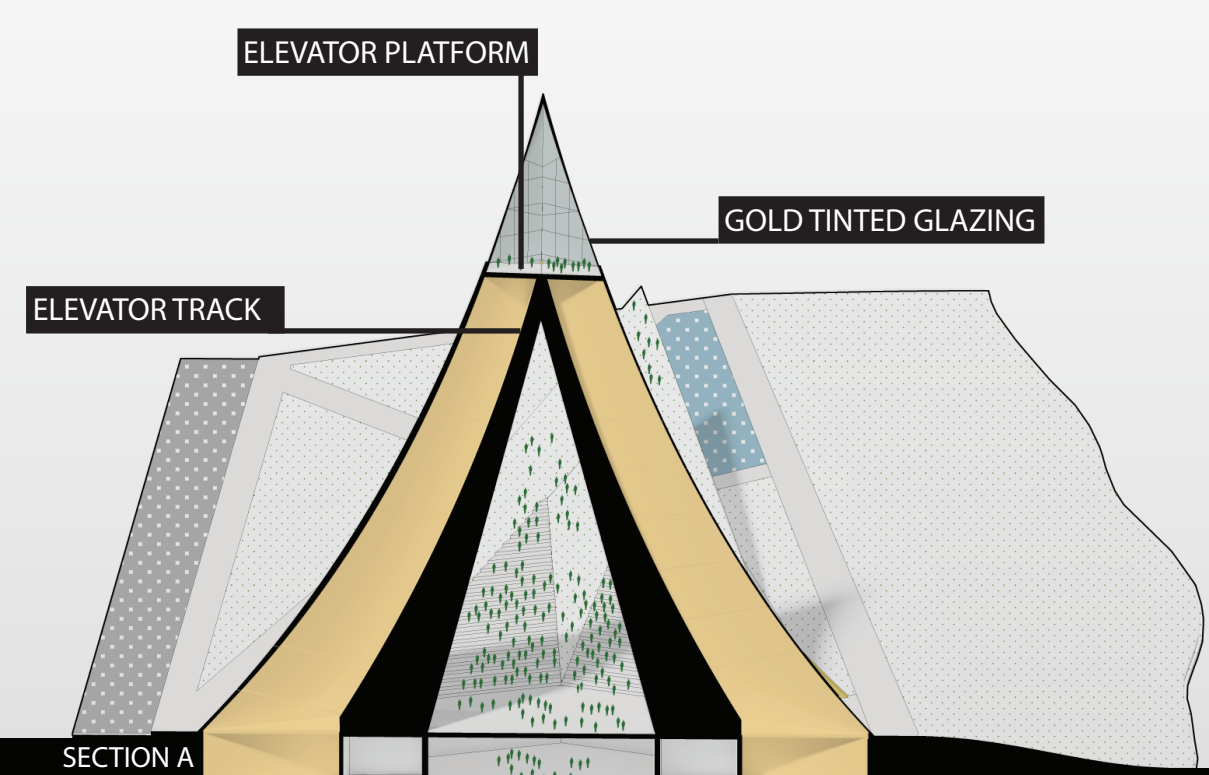


WATER COLLECTION TUBES

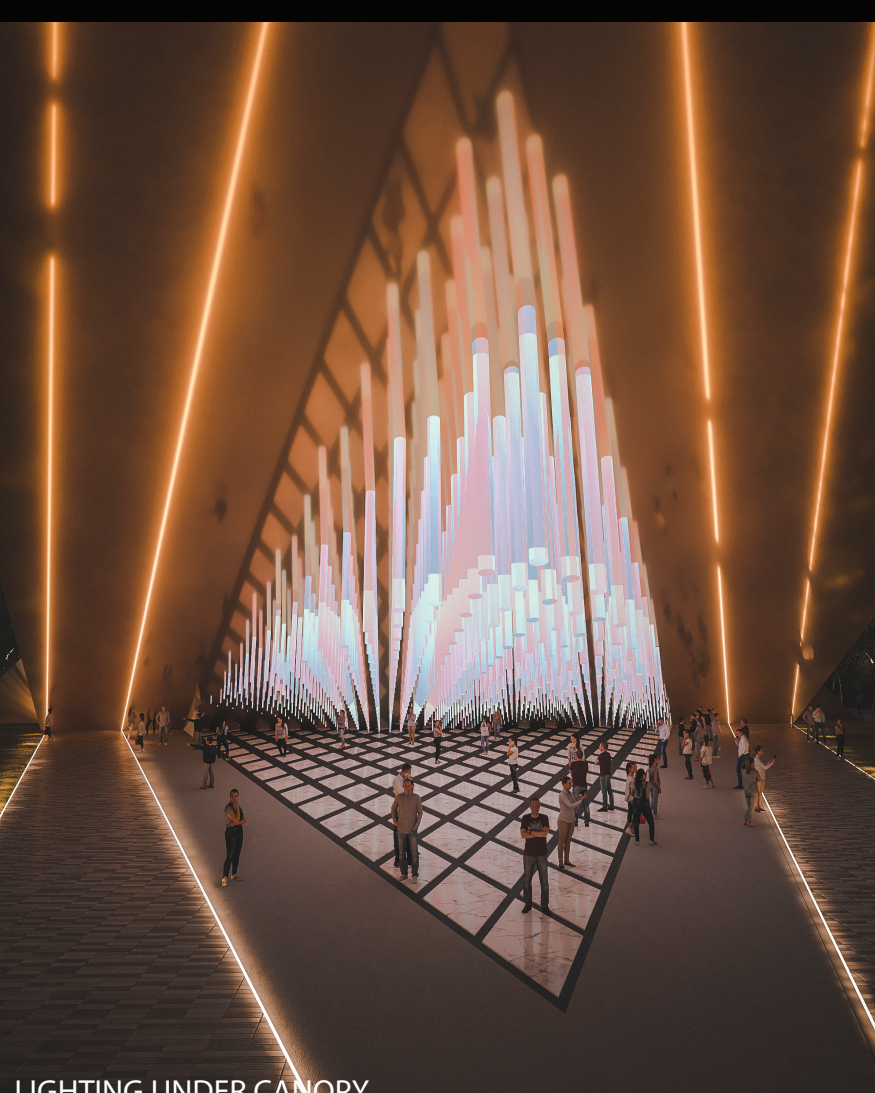
SOLAR PANELS



SECTION B



SECTION A



LIGHTING UNDER CANOPY



ENTRANCE TO ELEVATORS / EXHIBIT



TOP OF THE MONOLITH

