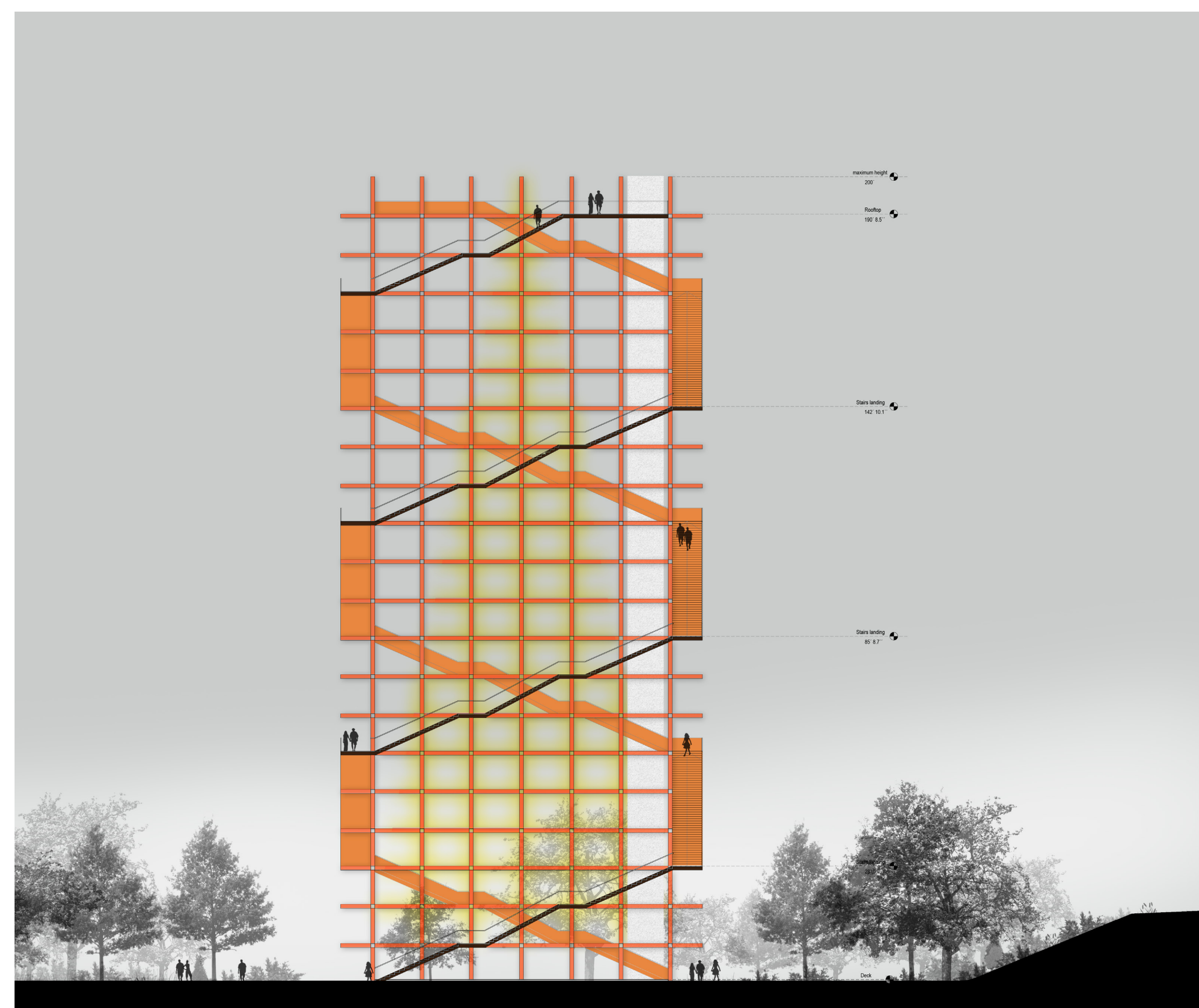
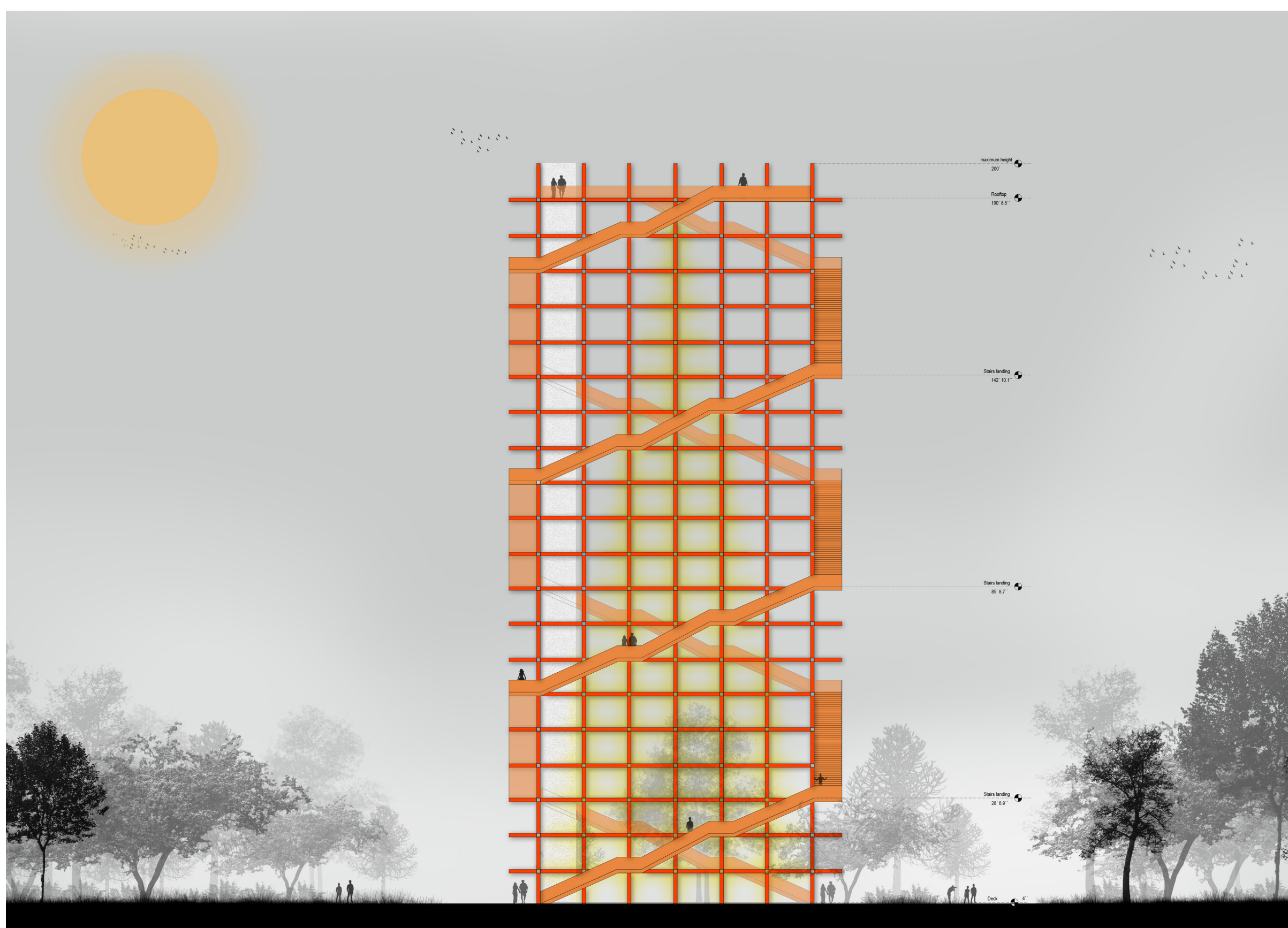
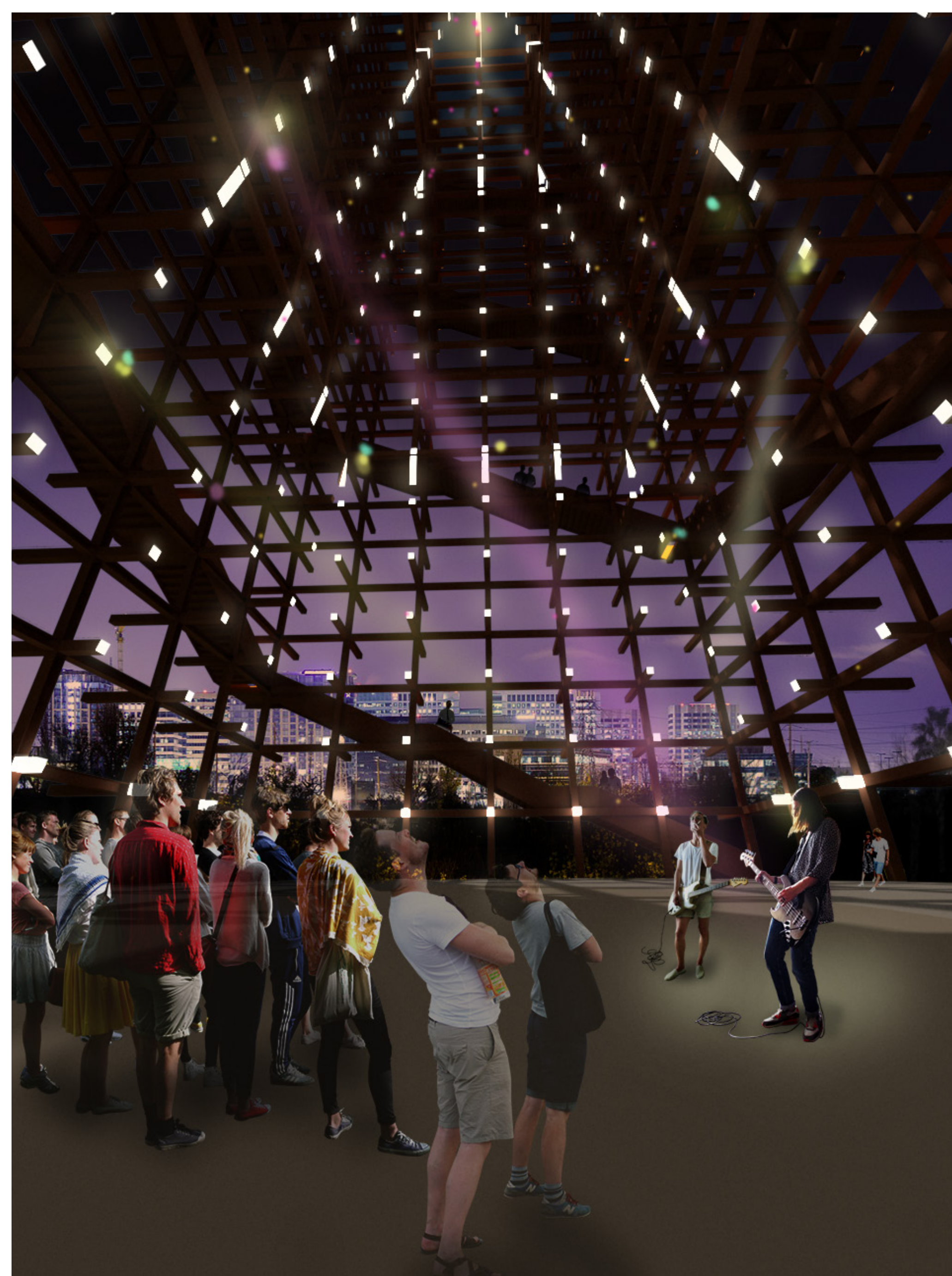


Afterlight.

Celebrating the confluence of nature, social diversity and city's endless innovation

A world-class observation deck and light installation to celebrate the confluence of nature, social diversity and city's endless innovation, by bringing back a piece of its collective memory and historical heritage. At night a diffuse glare of light will bring back to life the shape of the old San José Electric Light Tower by lighting its interior. It is meant to be a new urban landmark, a place to contemplate the city from above while climbing the spiral stairs. At the rooftop a glass flooring observation deck will be a must-visit attraction.



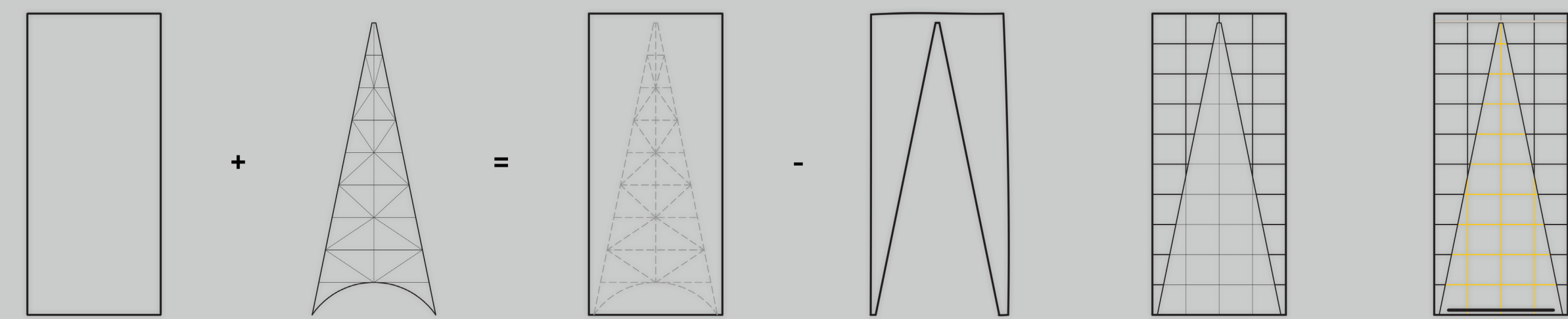
West Facade

A-A Section

B-B Section



Design process



Strategy: Propose a vertical landmark, to outstand and therefore be the new city attraction: a world-class observation deck from where the entire city can be seen. The new icon of San Jose.

Input: the former city icon, which no longer exists, a structure that once defined the image of the city and which today is part of the collective memory of San Jose.

Operation: How can we merge past, present and future, in order to create a world class city observation deck, that will be the new image of the city?

We propose tridimensional rectangular structure, that has the same width and height of the iconic shape of San Jose Electric Light Tower, and by subtracting both, it recovers the former tower shape when illuminated from inside.

Result: A urban landmark, that outstands from its surroundings, and brings back a piece of the city's memory, in a structure where past and future, shines together.

Materials - Axonometric

Photovoltaic laminated Safety Glass

Corten Steel

Metallic bench

Metallic staircase

LED lighting system

Wooden Stage platform

Corten steel cladding over reinforced concrete pillars

