

THE AVIARY

The South Bay's tidal wetlands are in the process of a decades-long environmental restoration project, aimed at recovering vital habitats for birds along the Pacific Migratory Flyway while acting as a buffer to flooding and sea level rise.

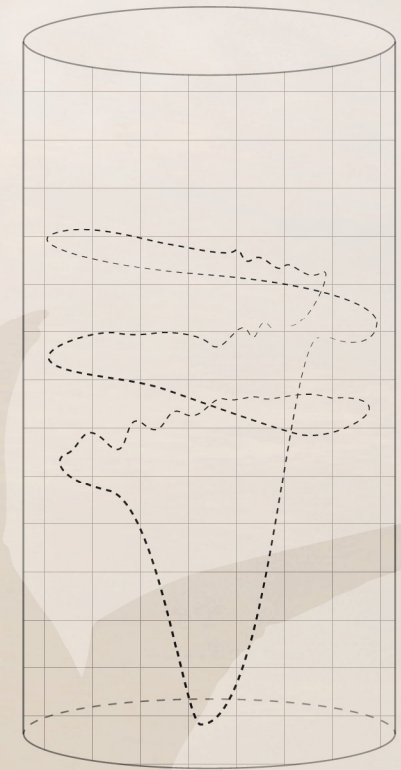
The Arena Green is reimagined using imagery from the wetlands, reshaping the natural forms and colors into engaging public spaces. The park both offers venues for recreation and events as well as opportunities to learn about the ecosystem's flora and fauna through educational signage and a small visitor's center with available classroom space.

Rising up from the park stands the Aviary, a 160-foot-tall dynamic sculpture that cuts a silhouette with both classical simplicity and contemporary

elegance. The Aviary is an object of wonder: a massless column of suspended electrochromic glass that manipulates captured light to dance in flight using variable-opacity panels.

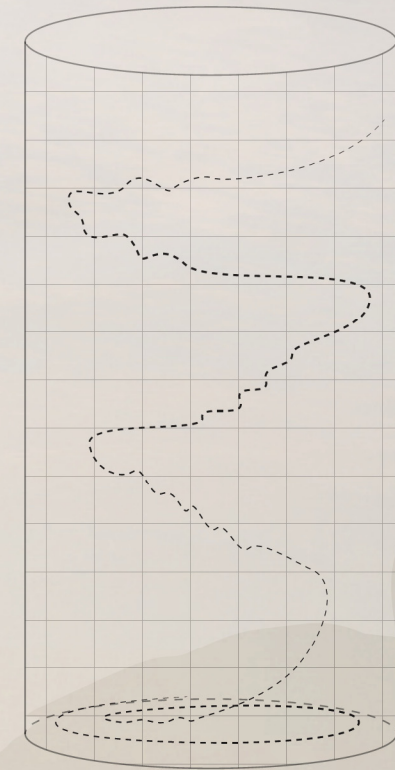
Simulated birds flit, flock, swoop, and circle as their algorithms respond to park activity as well as to each other. Reinforced steel columns hold the Aviary at the center of an observation deck that winds 25' upwards from the plaza to picturesque views of the sculpture and neighborhood.

The Aviary serves as a contemporary icon that will draw the wonder of both locals and tourists, a centerpiece for downtown arts and culture events and a symbol of beauty and life at the doorway of Silicon Valley.



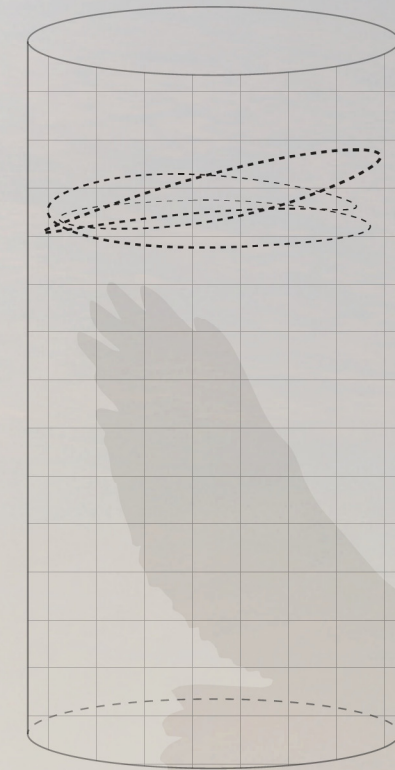
FORSTER'S TERN

Builds floating nests in Salt marshes, hovers above water, darting down to catch small fish.



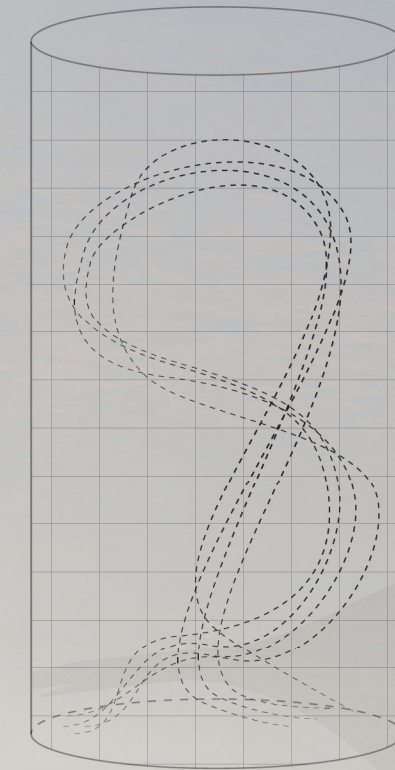
RUDDY DUCK

Spends winter in the wetlands, performs elaborate courtship displays. Migrates annually to Canada.



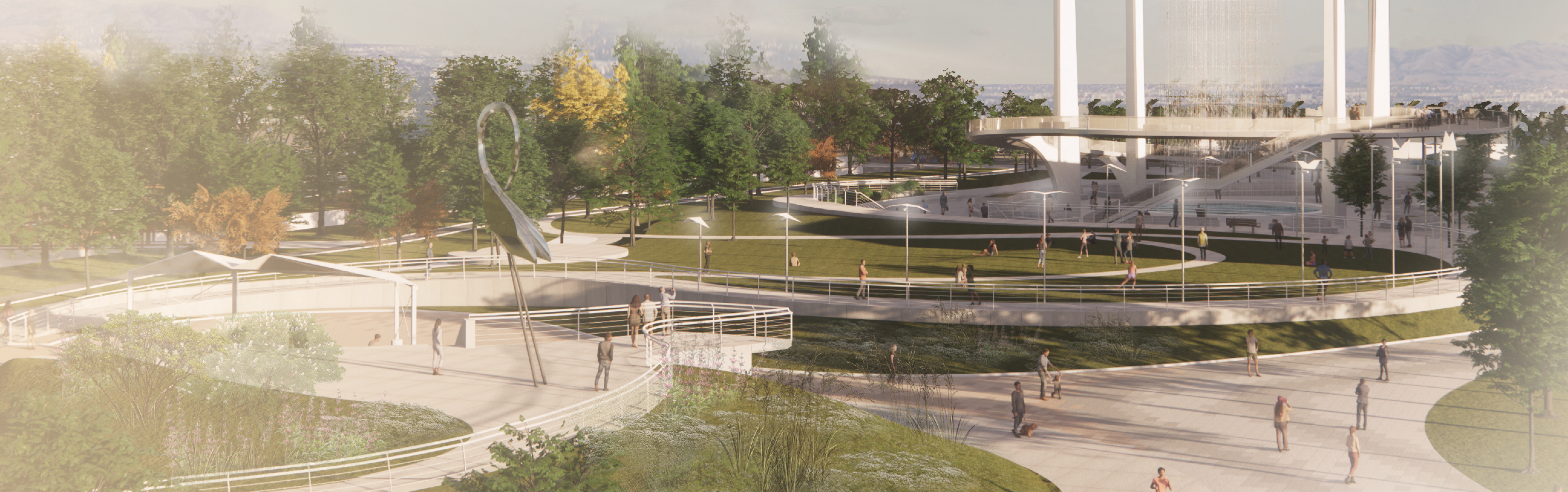
PEREGRINE FALCON

Hunts for small birds, circling as high as 3000' on the lookout for movement, then swooping as quickly as 200mph



SONG SPARROW

Forages for seeds and insects on the ground, then moves in large flocks for protection from predators.





A visitor's center offers information about environmental engagement and a classroom space for school groups.

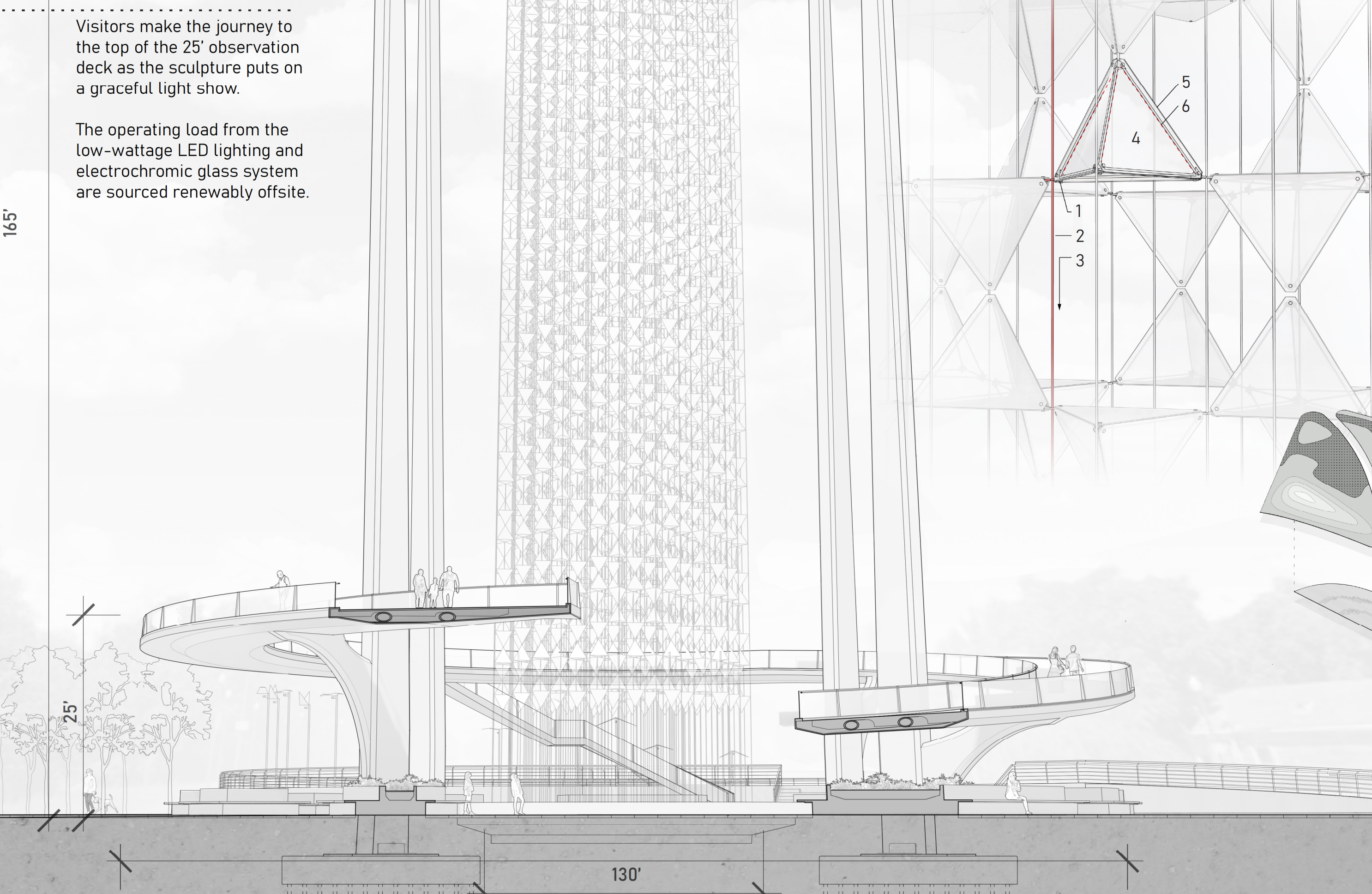


The Aviary recognizes and responds to public interaction during street fairs, tailgates, and public concerts.



Visitors make the journey to the top of the 25' observation deck as the sculpture puts on a graceful light show.

The operating load from the low-wattage LED lighting and electrochromic glass system are sourced renewably offsite.



PRISM DESIGN

1. Series Multiplexer
2. Braided Steel Cable
3. To Control CPU
4. 1/4" Plexi Panel, Electrochromic Film
5. Interior Frame
6. EL Lighting Element

PARK DESIGN

- Arena Green is reimagined using imagery from the wetlands, reshaping the natural forms and colors into engaging public spaces.
- a. Picnic Grove
 - b. Scenic Lookout
 - c. Visitor's Learning Center
 - d. Amphitheater
 - e. Raised Lawn
 - f. Five Skaters Monument
 - g. Viewing Deck
 - h. The Aviary
 - i. Reflecting Pool

PARK UTILITY

The park aims to mirror the management function of tidal wetlands in water storage and filtration. Taking advantage of the scale of new Downtown West Development, the main glade of the park covers a 70,000 gallon cistern, as well as a treatment and filtration system for greywater and storm runoff resulting in net-positive water usage. This infrastructure could manage non-potable water for all new downtown development, storing it for reuse in irrigation, municipal street cleaning, and local facility use.

To achieve this, the park utilizes strategically graded topography and bioswales (1) as well as permeable paving (2) to channel water towards the underground cistern (3).

