

Model north. *fig. 1*



Model northeast. fig. 2

Mind Space, San Jose, CA

Algorithms of Being

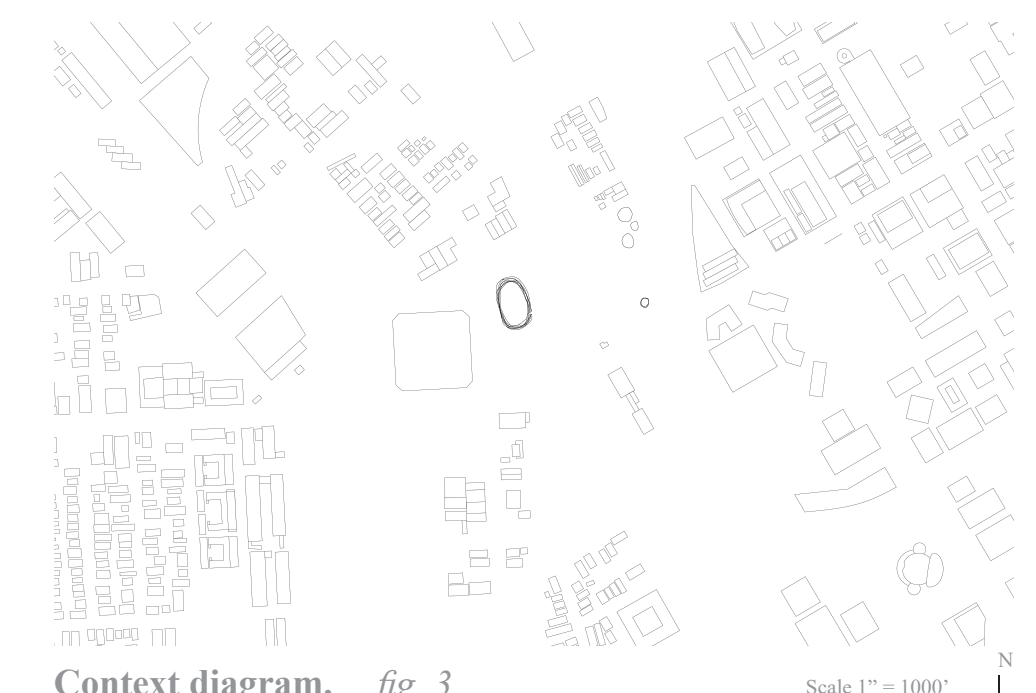
- Step 1: An idea is formed in the mind.
- Step 2: The structure is conceived by molding handcrafted models.
- Step 3: The handcrafted model is 3d-scanned.
- Step 4: The model is digitalized, computer aided optimized and engineered.
- Step 5: The final structure is 3d-printed in-situ by robots, based on the digital data from the engineering process.
- Step 6: The idea becomes reality.

The process describes the direct translation of an idea into a physical reality through digital and automatization technology. The mind is translated into Being in form of this physical space. This space becomes a place of reflection - communal or in solitude - for others to encounter the perception of the mind.

Net-Zero strategy and sustainability

The structure addresses its own emission balance through minimized impact and excavation, local and in-situ production and construction, optimized efficiency and performance and employment of renewable energy and resources. In a broader view, it presents a case study and precedence for future structures that provide greater freedom, efficiency and strength while reducing emissions.

The structure continues the tradition of the Eiffel Tower to set out new possibilities of new technologies in a new era. The processing of humanities in combination with applied sciences into the reality of the physical world represents an advancing definition of Being as an individual and societies as a whole.

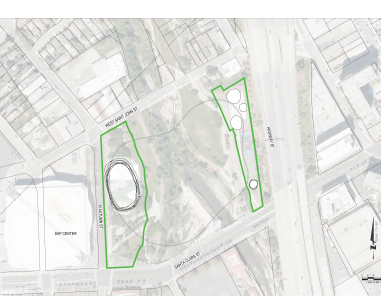


Context diagram. fig. 3



Site plan. fig. 4

- Legend
- 1 Guadalupe River
 - 2 Los Gatos Creek
 - 3 Santa Clara Street
 - 4 N Autumn Street
 - 5 West Saint John Street
 - 6 Highway 87
 - 7 SAP Center
 - 8 The project
 - 9 Cafes and pavilions
 - 10 Restroom facilities
 - 11 Path
 - 12 Landscape and park furniture



Site map. fig. 5