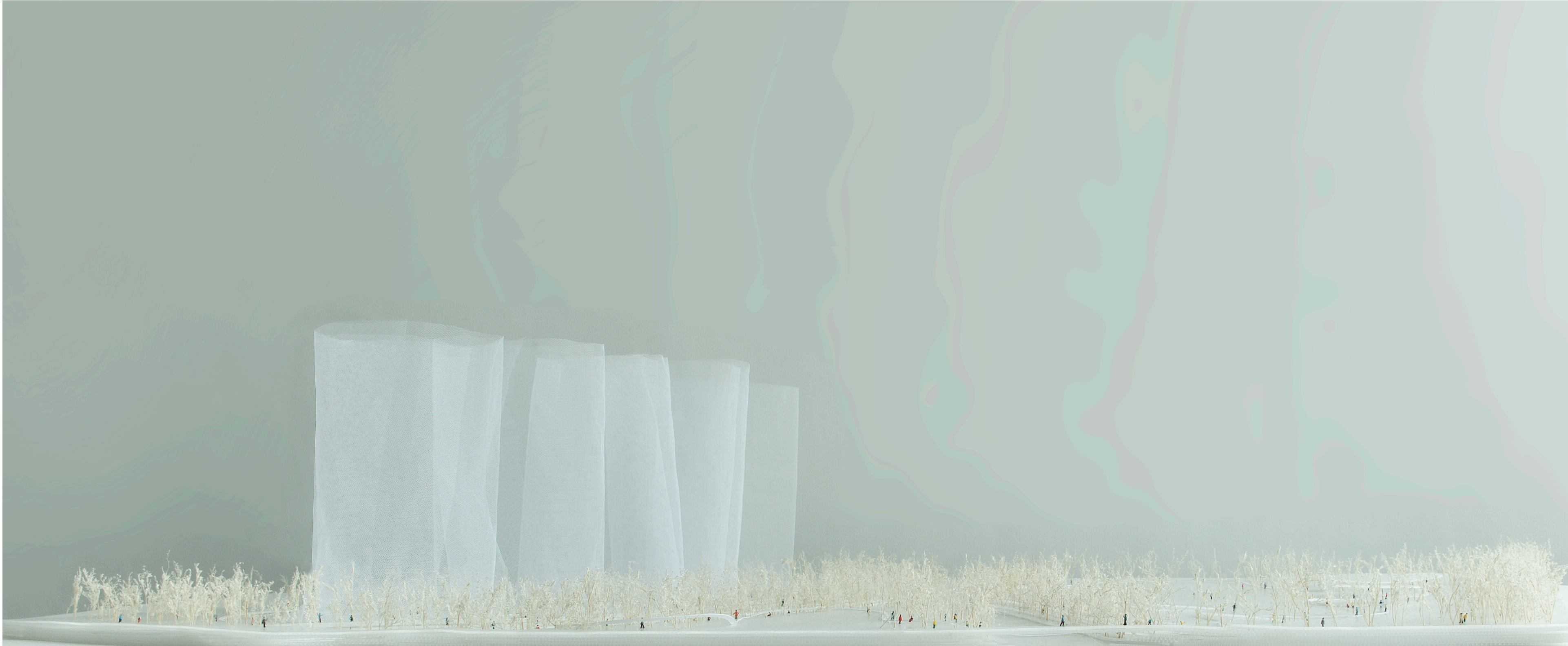
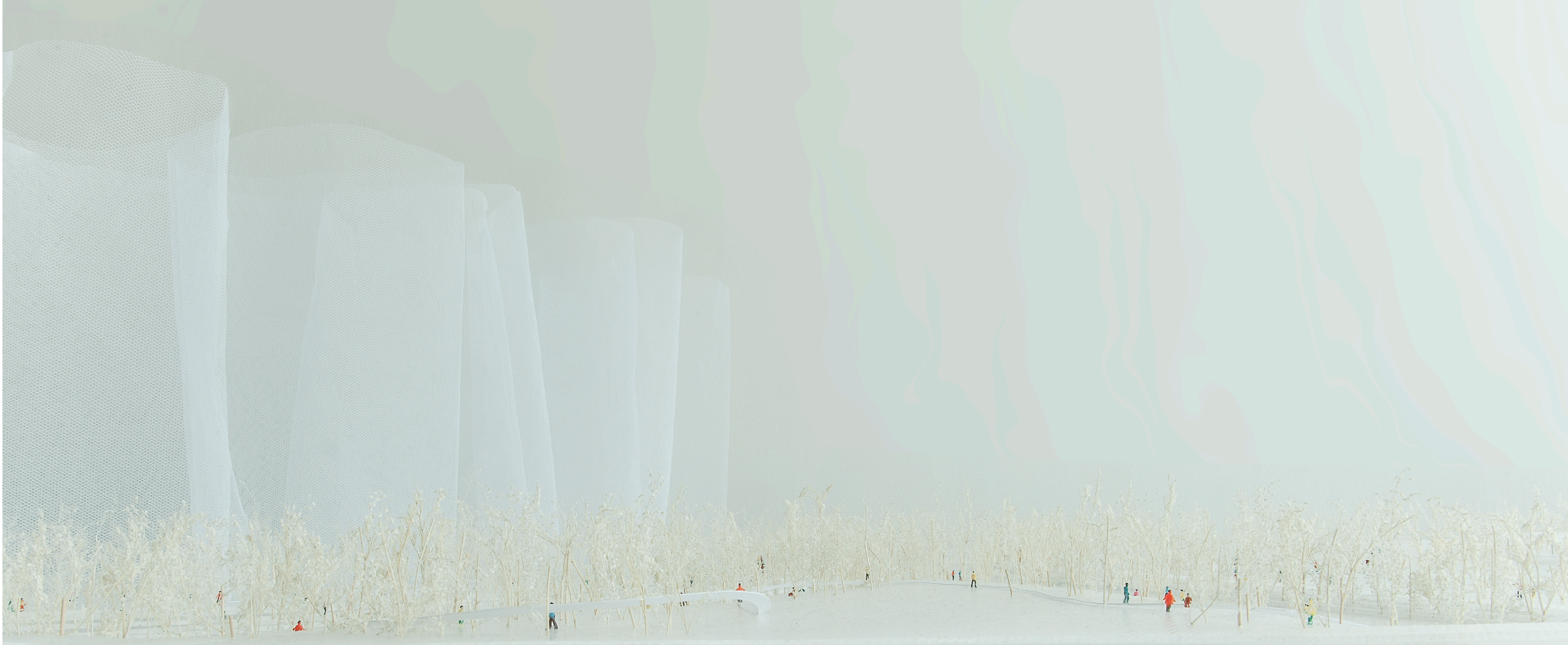




Model north. *fig. 1*



Model south. *fig. 2*



Model south. *fig. 3*



Interior. *fig. 4*



Interior with art installation. *fig. 5*

#### Cloud Space, San Jose, CA

A translucent layer marks the transition from an open space into an open space.

A light envelope distinguishes a permeable volume. It is filled with light, air and the overwhelming presence of the large transparent space itself. The indefinite, the indescribable.

The cloud-like appearance provides the space with a physical presence in the city context, maintaining connections with its surroundings. It is open and accessible, inclusive and integrative. This Cloud Space is as a free volume, a platform for users to fill with individual content. The meaning is to be defined by its content - adaptable, transformative and progressive.

The structure is transformed and informed by transitory events with communal to regional reach to the establishment of XOCA, the Space of Contemporary Art, an annual large-scale art installation of significance like MOMA, MOCA, LACMA or SFMOMA, inviting visitors from all over the world. Around the art installation, XOCA at Arena Green is constantly transformed by events, activities and happenings. The Cloud Space is a social and cultural anchor point in the community and the region, creating an identity to the inside and outside of San Jose and the Silicon Valley.

#### Net-zero and sustainability

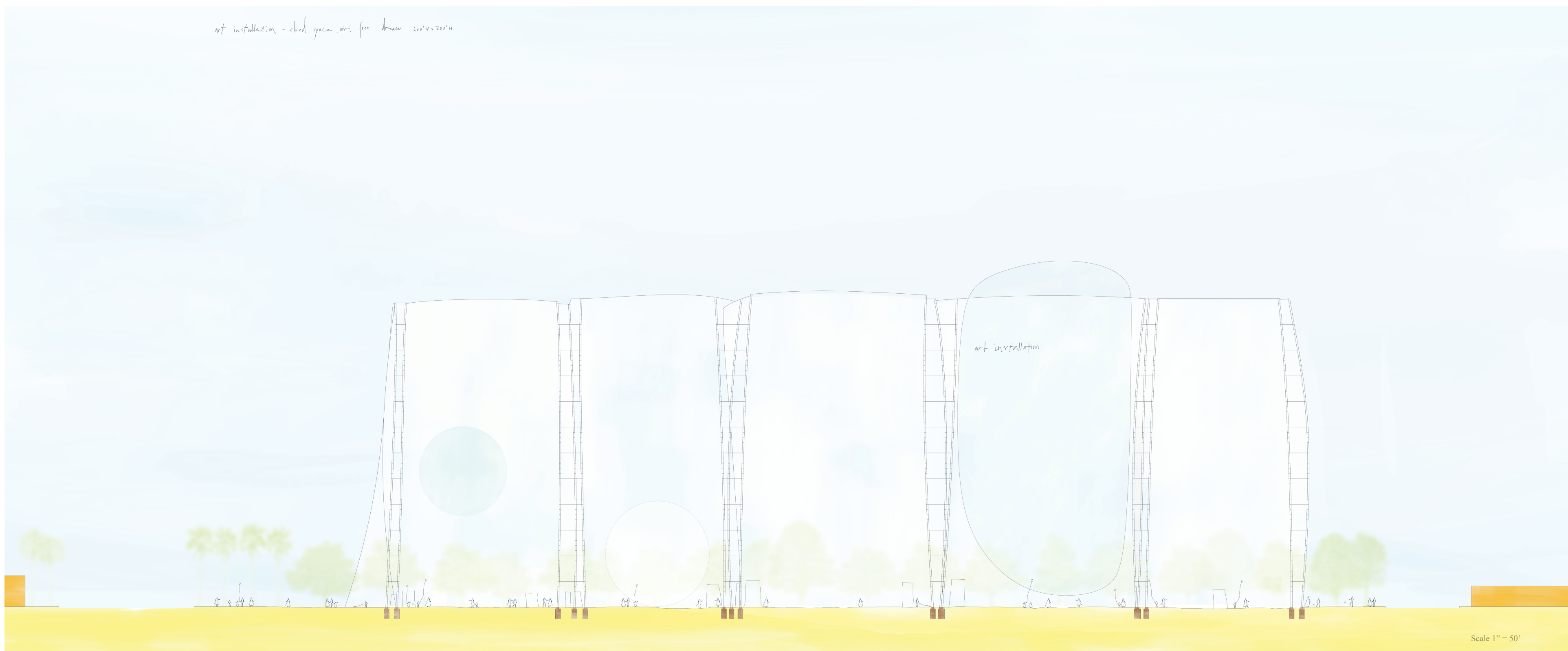
Energy for events and construction is from renewable resources.

The lightweight structural conglomerate under a stretched skin layer adapts the concept of a highly efficient organic fiber structures with minimal mass and reduced resources. The span of structure reduces foundation sizes and excavation.

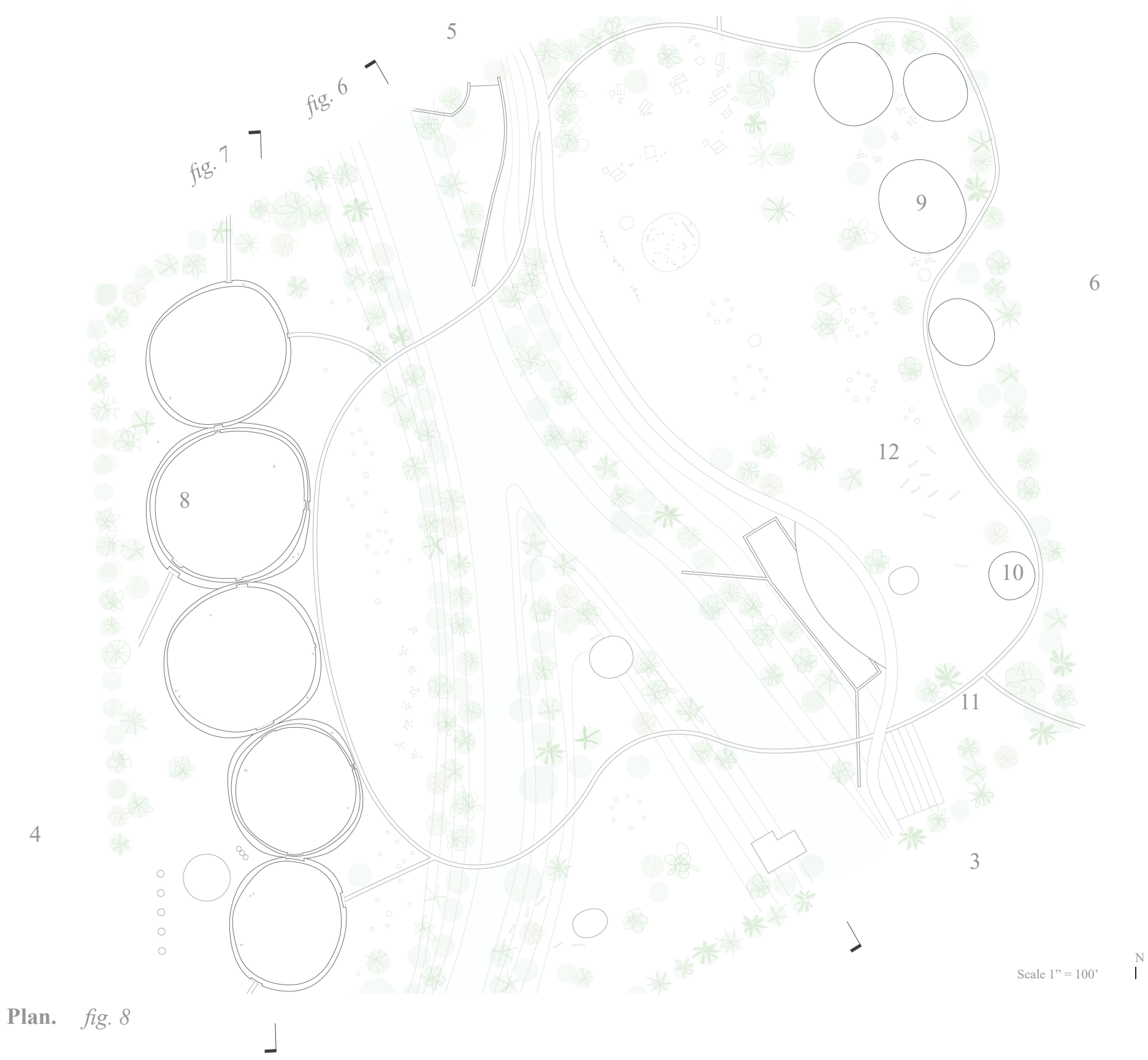
The vegetation remains untouched. A circular footpath connects both sides of the rivers.



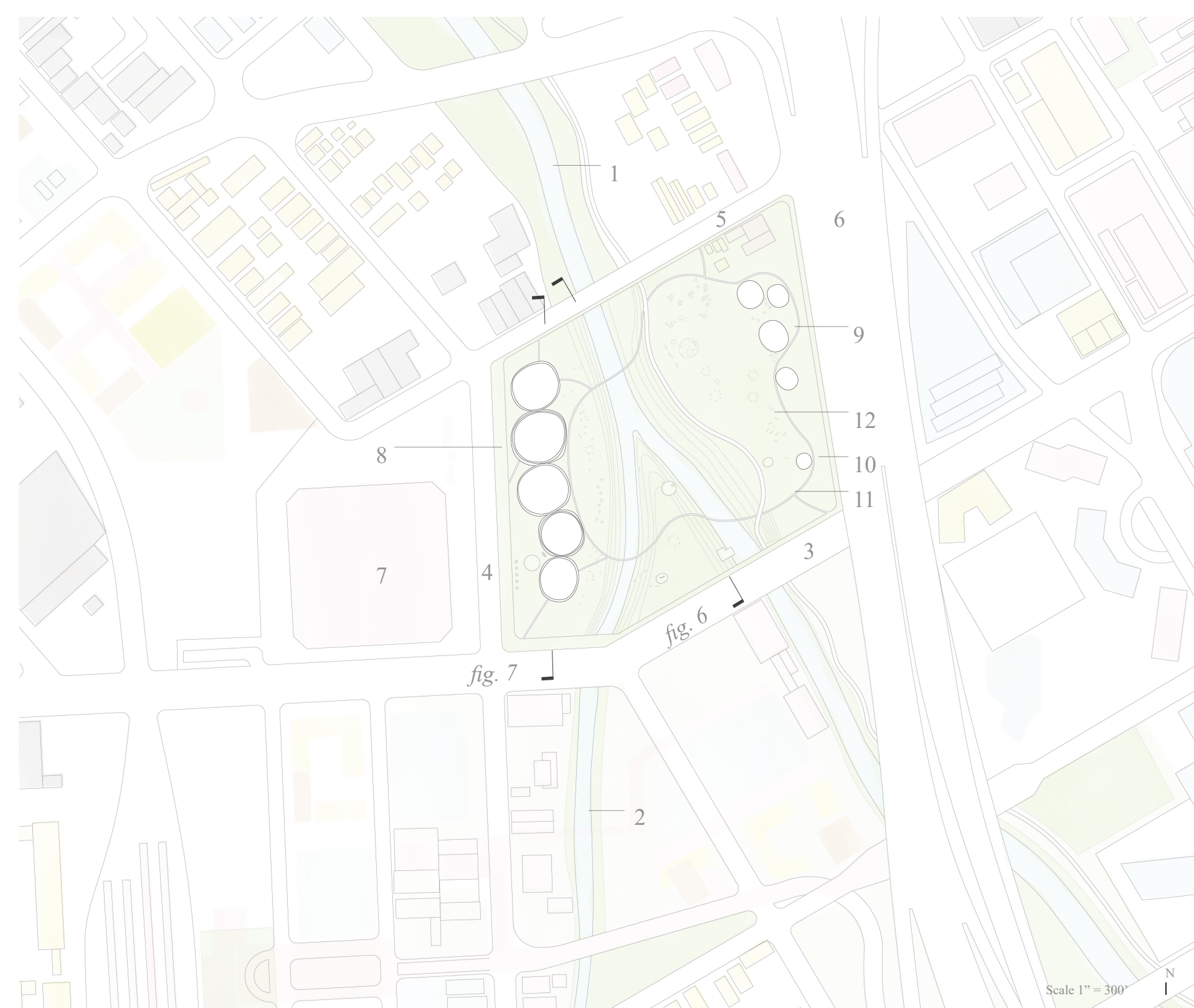
Elevation. fig. 6



Section. fig. 7

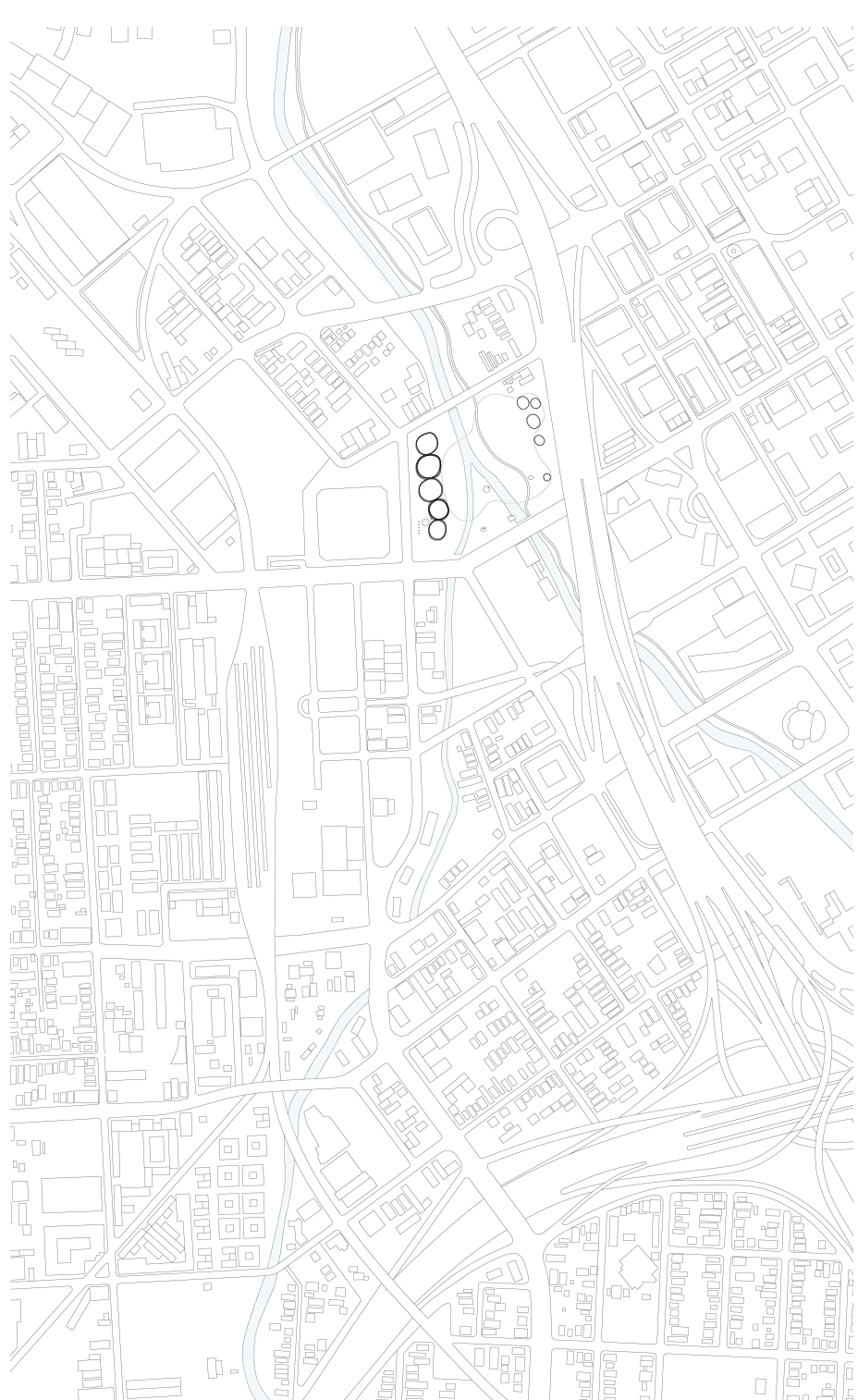


Plan. fig. 8



- Legend
- 1 Guadalupe River
  - 2 Los Gatos Creek
  - 3 Santa Clara Street
  - 4 N Autumn Street
  - 5 West Saint John Street
  - 6 Highway 87
  - 7 SAP Center
  - 8 The project
  - 9 Cafes and pavilions
  - 10 Restroom facilities
  - 11 Path
  - 12 Landscape and park furniture

Site plan. fig. 9



Location plan. fig. 10



Building plan. fig. 11

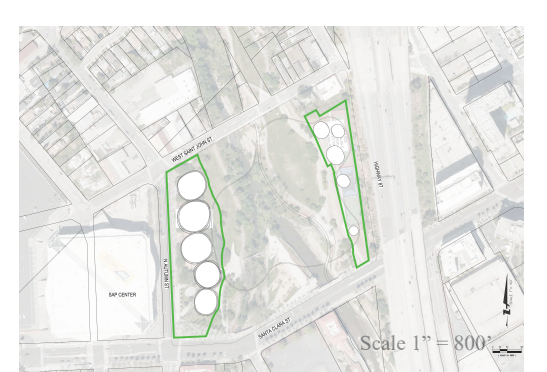


Zoning diagram. fig. 12



Green corridor diagram. fig. 13

- fig. 12
- a Green corridor and green open spaces
  - b Residential, amenity, hotel
  - c Commercial, retail, cultural, arts, education, institution
  - d Offices
  - e Industrial
  - f Mixed-Use Rezoning and Development Plan include proposal by Google LLC (10 October 2019). Project boundary and illustrative building footprints are subject to change
  - g Diridon Station Area Plan



Site map. fig. 14