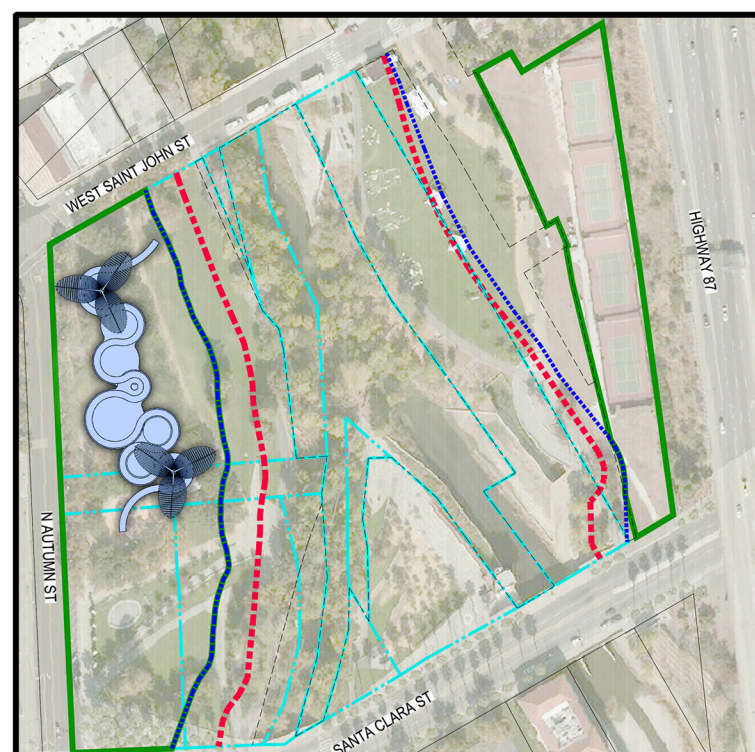


- 1 walkway
- 2 solar tree
- 3 coffee shop
- 4 sky trampoline
- 5 glass swimming pool
- 6 bungee jumping
- 7 party area

CONFLUENCE OF LOVE AND JOY

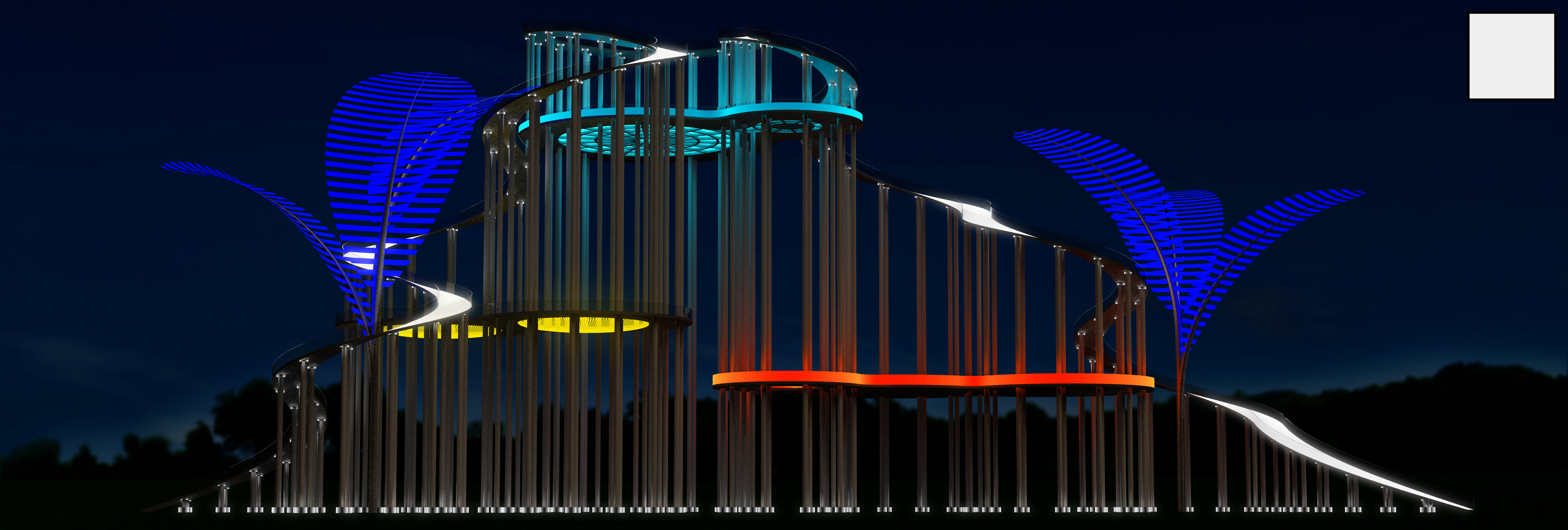
Not only can hatred and viruses spread around, love and joy can do better. So I designed a building where people can find love and joy here and spread them to each other.



This project consists of five areas: sky trampoline, coffee shop, glass swimming pool, bungee jumping and party area. The sky trampoline is surrounded by a cafe. Above the cafe is a glass swimming pool. In the middle of the glass swimming pool is a bungee point, and below the bungee point is a party area. These five areas merge or overlap with each other, and are connected in series by a walkway with a total length of 1480 feet and a slope of 18°.

Imagine that when children play happily on the trampoline, parents can sit in the cafe and enjoy coffee, when they raise their heads, they can see people swimming in the glass pool above them. People in the swimming pool can surround the bungee jumping point and watch someone jump from a big hole in the middle of the pool to the ground and the bungee jumper just falls over the heads of the crowd that dancing with music in the party area, bringing people excitement and surprise.

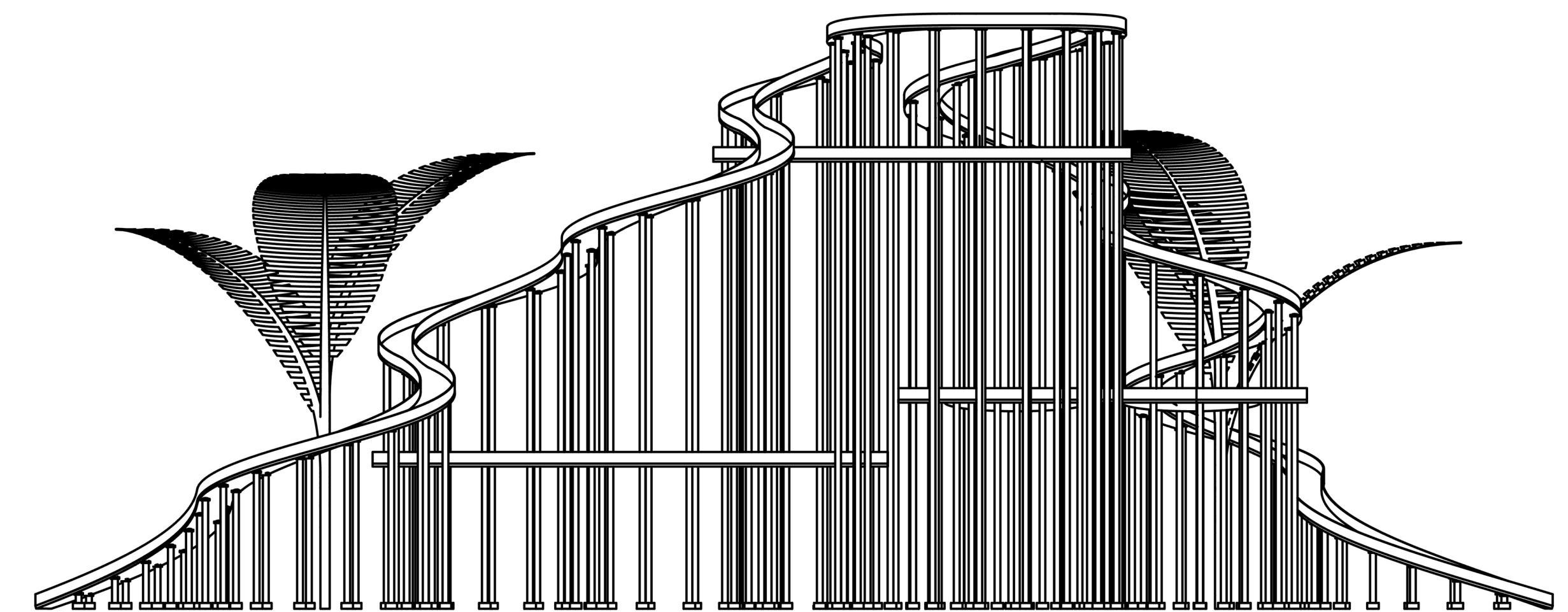
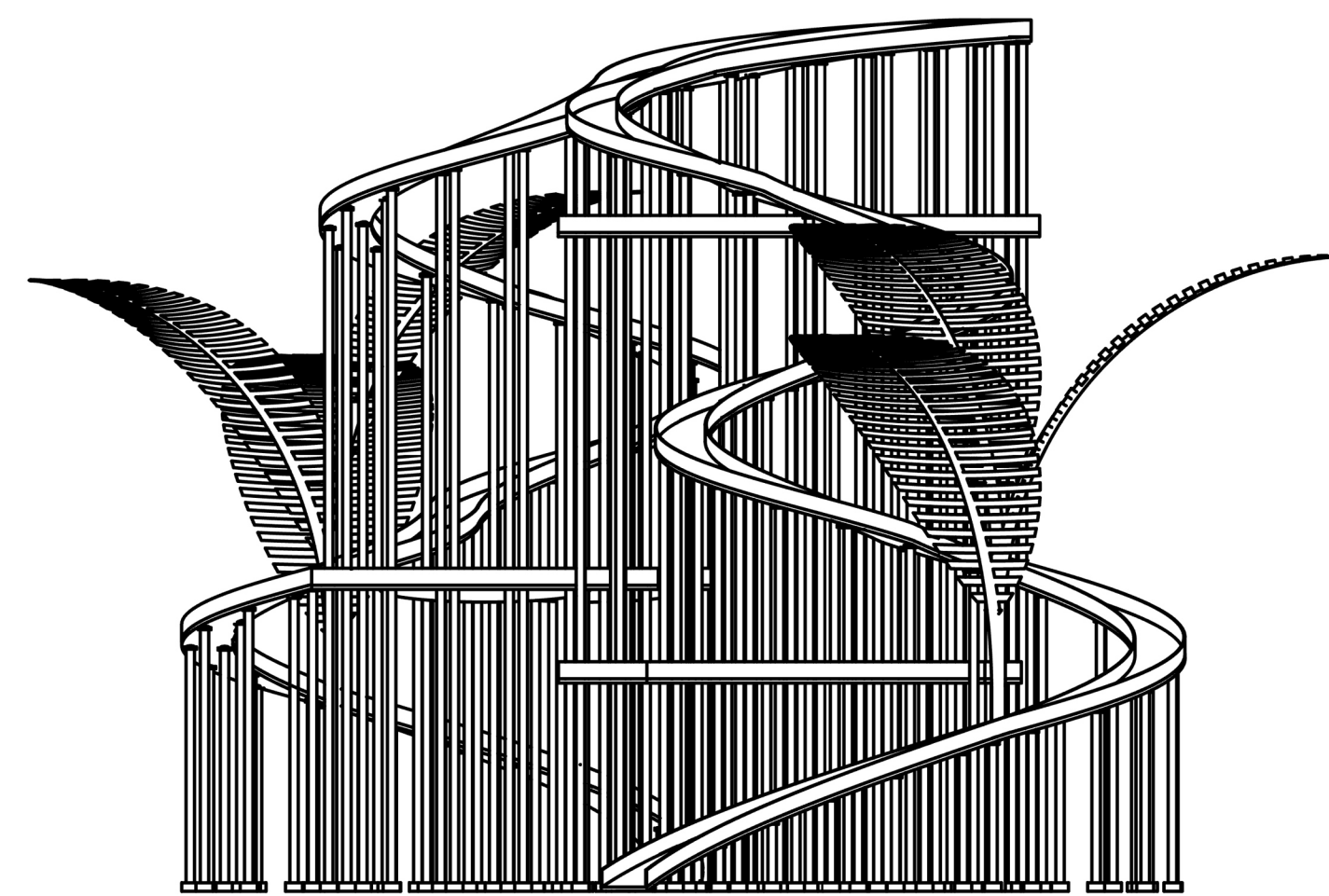
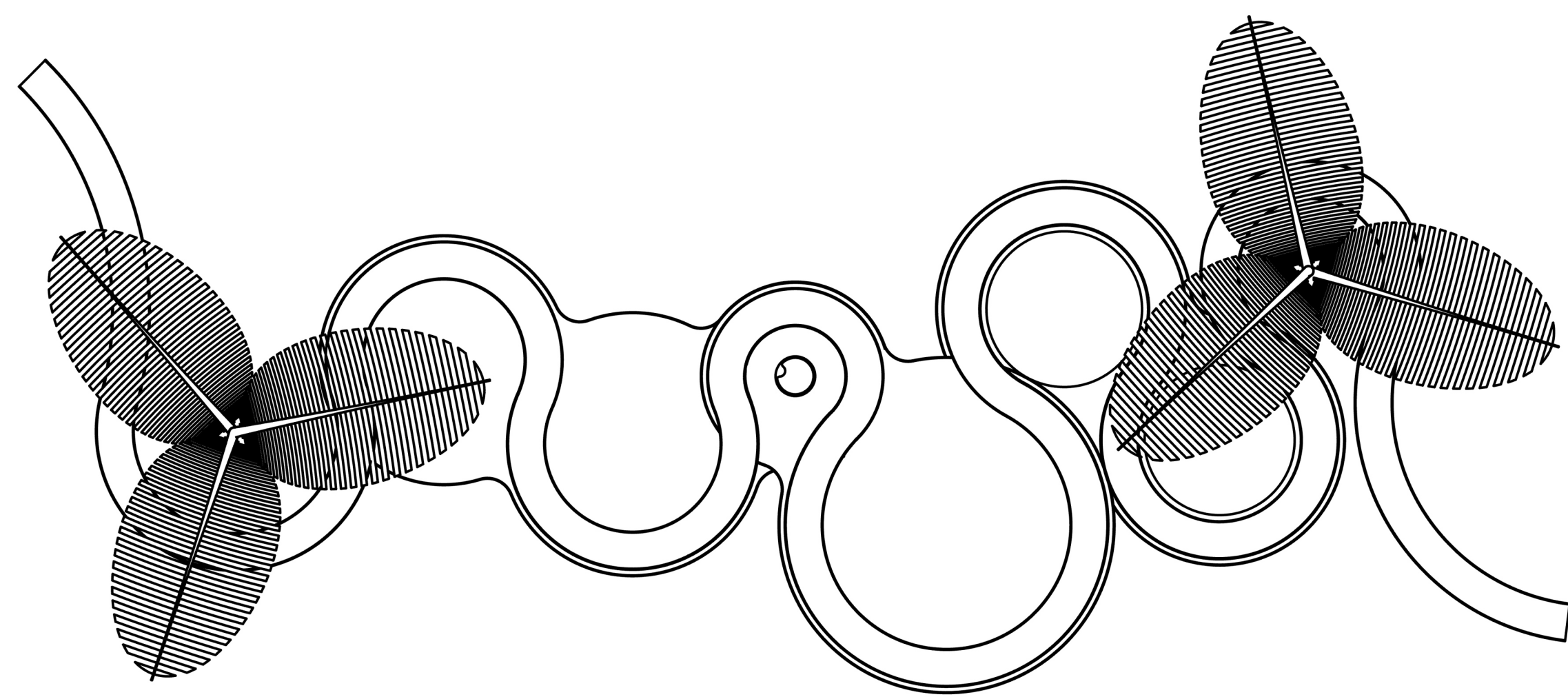
In this building, people can find different joys in different areas, and these joys can interact with each other. Laughter flows freely among the crowd, bringing people's hearts closer and forming a confluence of love and joy.



TOP

SIDE

FRONT



H 200 W 200 L 500