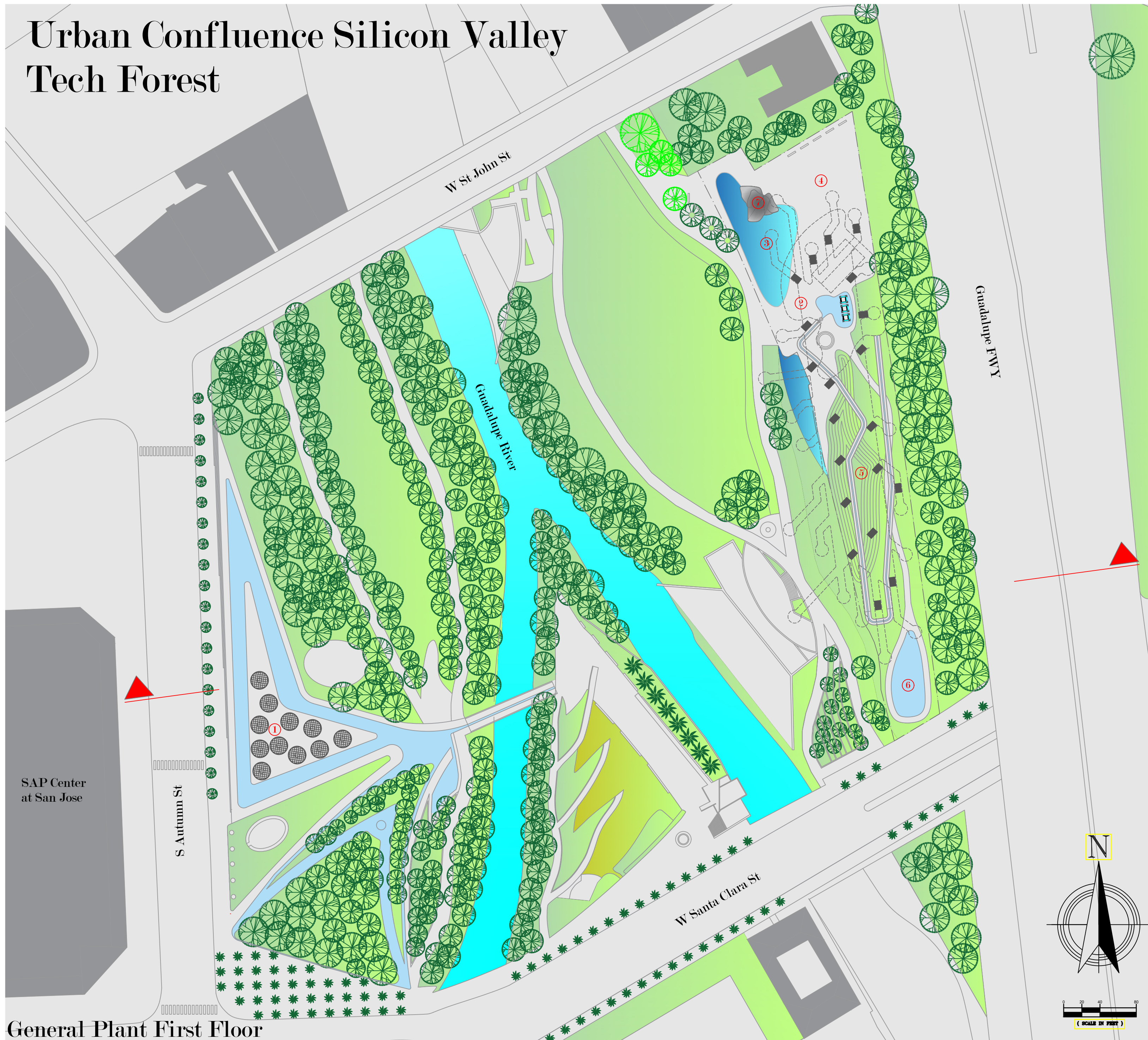


# Urban Confluence Silicon Valley Tech Forest



General Plant First Floor

- ① Public Plaza / Solar Panels
- ② Covered Square / Reception
- ③ Water mirror / Waterfall
- ④ Public Plaza (Music / Theater / Dance)
- ⑤ Artificial Mountain (Rainwater collection tank / Contemplation of the landscape)
- ⑥ Children's Playground Park
- ⑦ Silicon Stone (Simulation)



Section

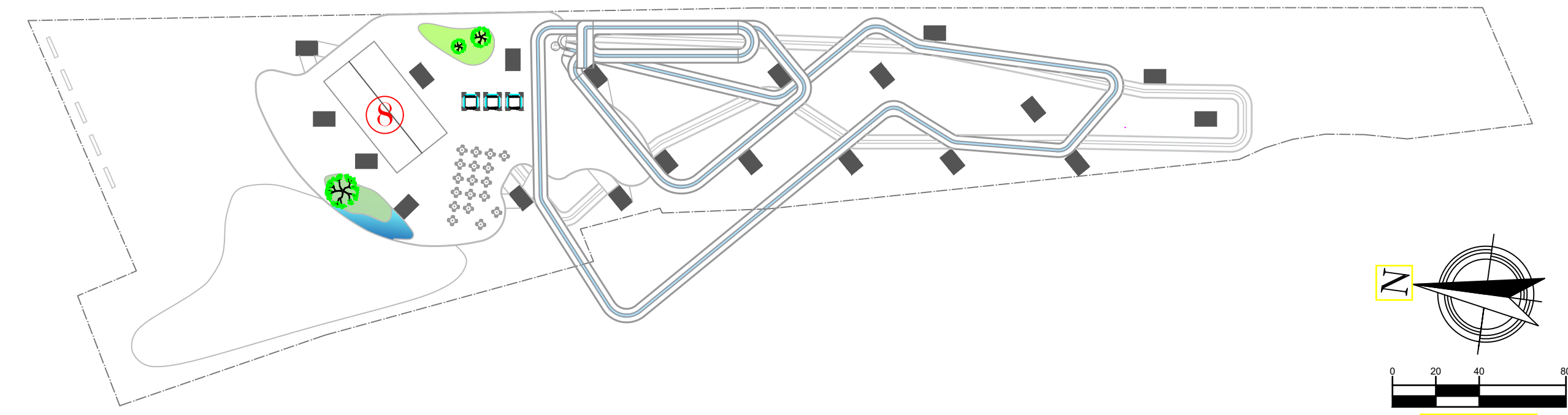
## Description

The Tech Forest design proposal seeks to become a world icon by creating a structure that takes representative and symbolic elements from the place, which later merge generating an architectural concept that is at the same time a forest, a landscape, an observation tower, a path, a mountain and an urban lamp. The main inspiration for this structure comes from the "Printed Circuit Board" which is a surface that presents a network of paths that end in a point or circle.

We adopted this idea because it clearly exemplifies the objectives that are to be achieved with the construction of the project, such as creating a place that can be traveled, to appreciate the visuals and that also associates the city of San José with technology. This network of roads rises to a height of 164 feet, by means of metal pillars that are organized as if it were a forest, these are kept within the perimeter allowed in the contest, there are some roads that are cantilevered and point towards reference places from the city such as: San Jose Diridon Station, San José International Airport, SAP Center and others.

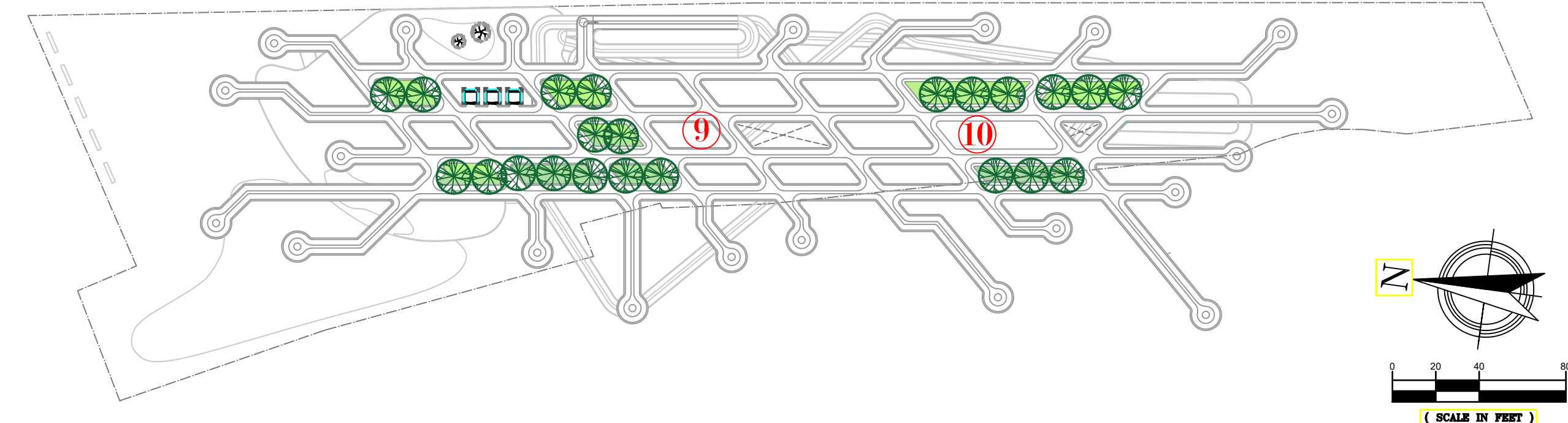
A ramp starts on the first floor and leads to a kind of tree house in which a restaurant works, people gather there to contemplate the surroundings in the shade. The ramp starts again and leads to the highest part of the structure. This element can become a great attraction, since as you go up, you enjoy the visuals and exercise. It also allows the stay in the place to be longer, since to experience it you must walk.

Water falls from the tree house like a waterfall creating another point of attraction to enjoy and take pictures. The most striking aspect of the design is the visual play that is created under the roof by lights that change color and allow the structure to become a landmark at night. We created a plaza in front of the Sap Center to attract people and that can become a place to celebrate the triumphs. There are the solar panels that feed the Tech Forest.



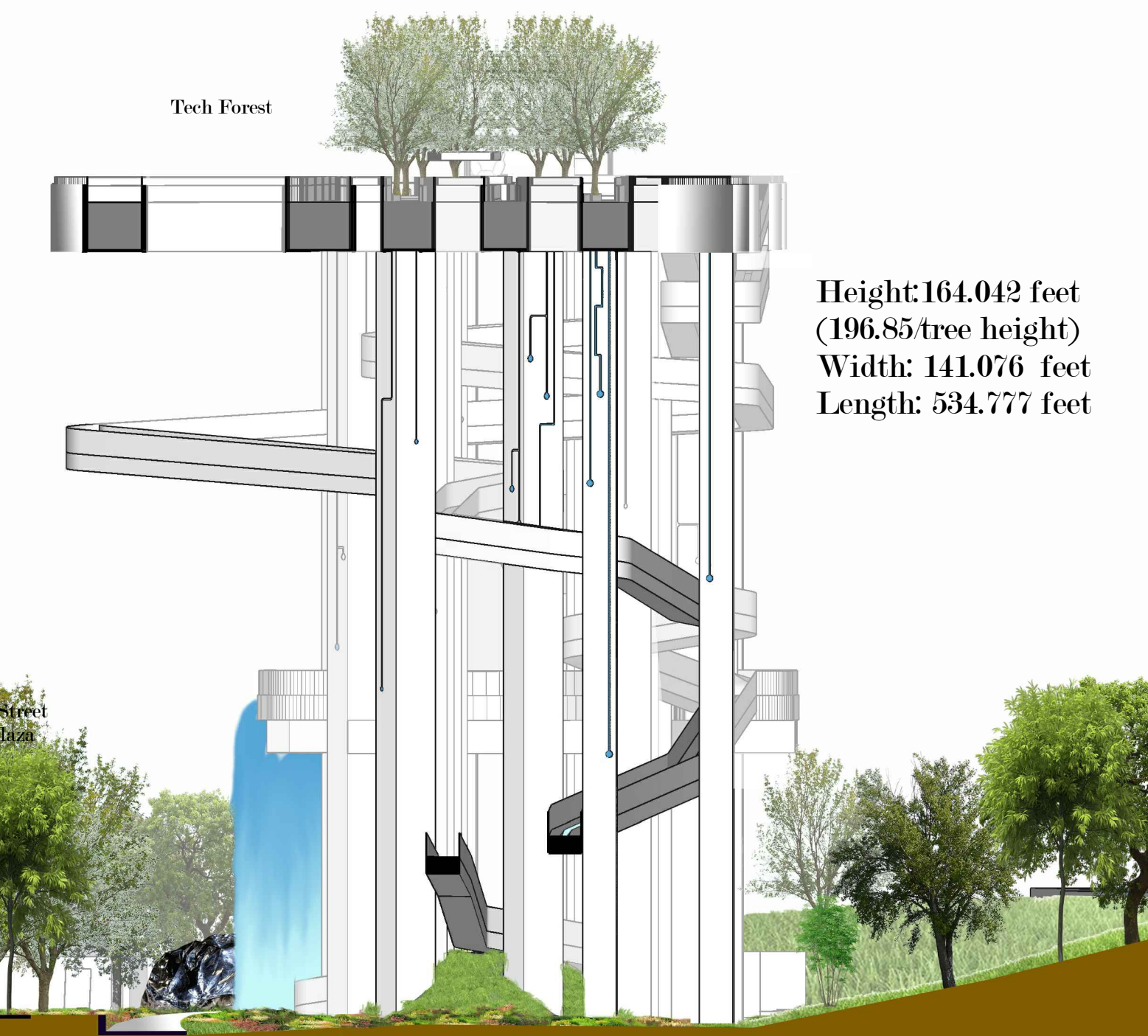
⑧ 3 floors (Restaurant / Bathrooms / Office)

Intermediate Floor



⑨ Rooftop    ⑩ Coffee Shop

Last Floor Plan



Height: 164.042 feet  
(196.85 tree height)  
Width: 141.076 feet  
Length: 534.777 feet

Visual Scale



# Urban Confluence Silicon Valley Tech Forest

