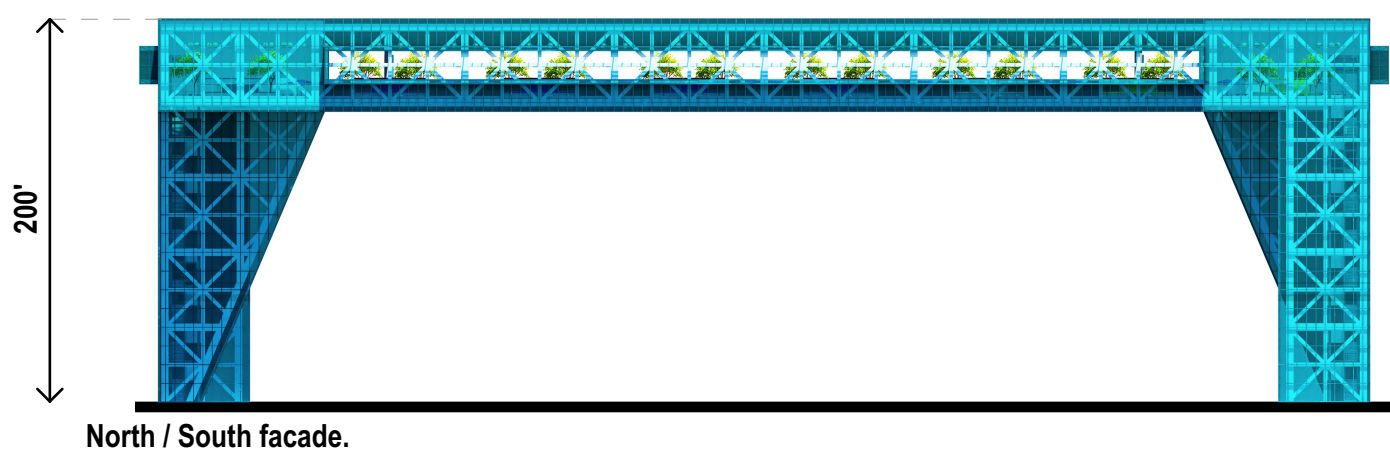


# SAN JOSE LIGHT SQUARE



North / South facade.

## An Iconic destination that builds civic pride.

The "San Jose Light Square" is formally a horizontally arranged square (whose highest face is 200' above ground), that matches one of its diagonals with the diagonal "Northeast-Southeast" from the park, spanning the entire green arena, dispose two supports in the east area and two supports in the west sides area available for design competition; virtually defining a courtyard inside the park. A structure of these dimensions is a world - class architectural iconic landmark, which enhances the nature of the Arena Green. Housing a terrace with cafes, restaurants, bars; projected as a tourist destination, to provide views of the surrounding cityscape from the project site, as well as to observe from the city.

## Celebrate the culture of innovation of the region.

The development of microprocessors is the foundation of current computing and the Silicon Valley industry. The geometry of the chips and processors conceptually defines the shape of the building, since geometrically the chips are generally rectangular elements that have long pins, with which they stick to the mainboard; and in particular the current CPUs is usually square with many metallic connectors on its perimeter, which are arranged around a core. Thus, the building has long support elements and is geometrically a square (shape that represents the pure and rational), establishing itself as a tribute to the technology developed in Silicon Valley.

## Net-zero energy design principles.

The roof of the building is made up of glass panels of amorphous silicon photovoltaic technology, this being the source of electricity for the operation of the building.

## Strong visual presence day and night, and at a distance.

The large proportions and recognizable purist geometry make the building easy to identify in the urban profile, added to the extraordinary lighting systems of the building, with LED lighting (greens and blues) as well as Transparent LED display/glass wall, which allows can have light shows both day and night, appreciated in proximity, in the distance, and inside the building.

## Respect for the environment.

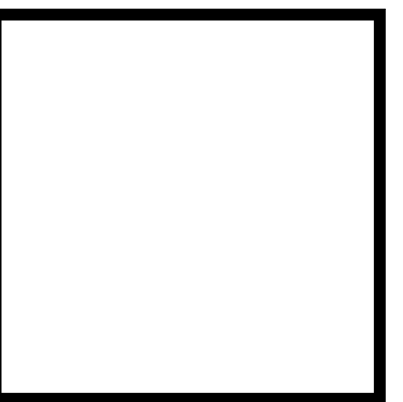
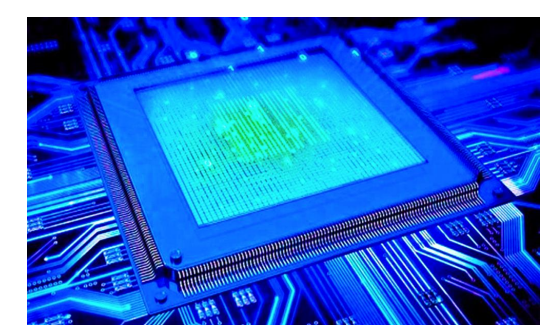
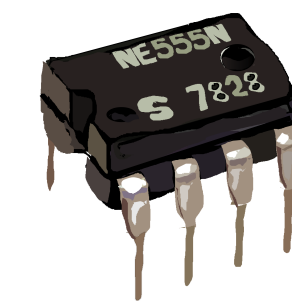
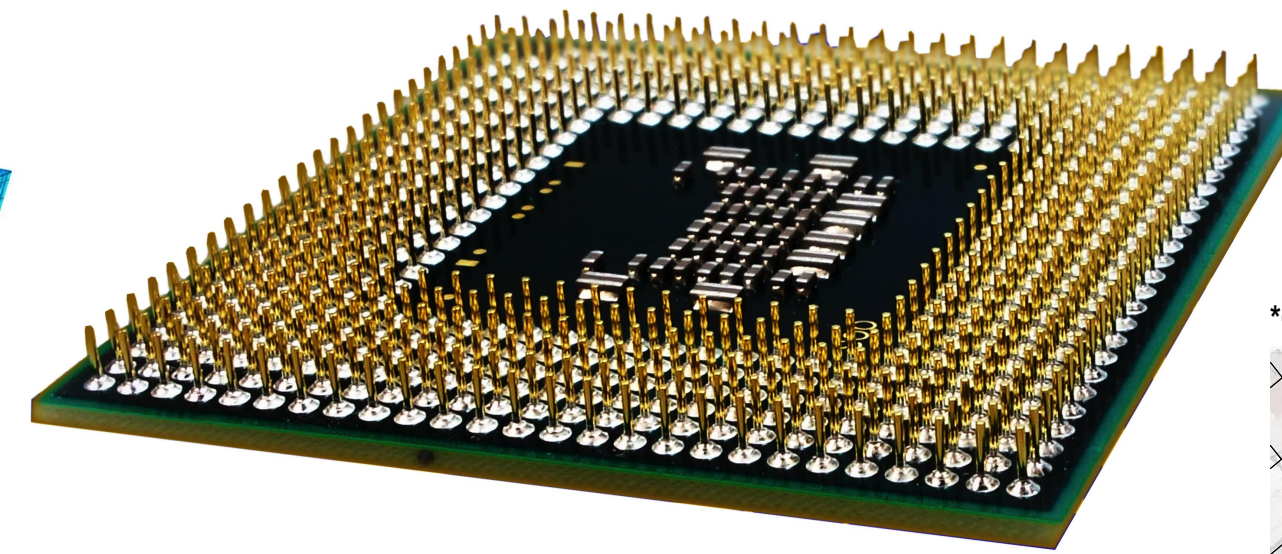
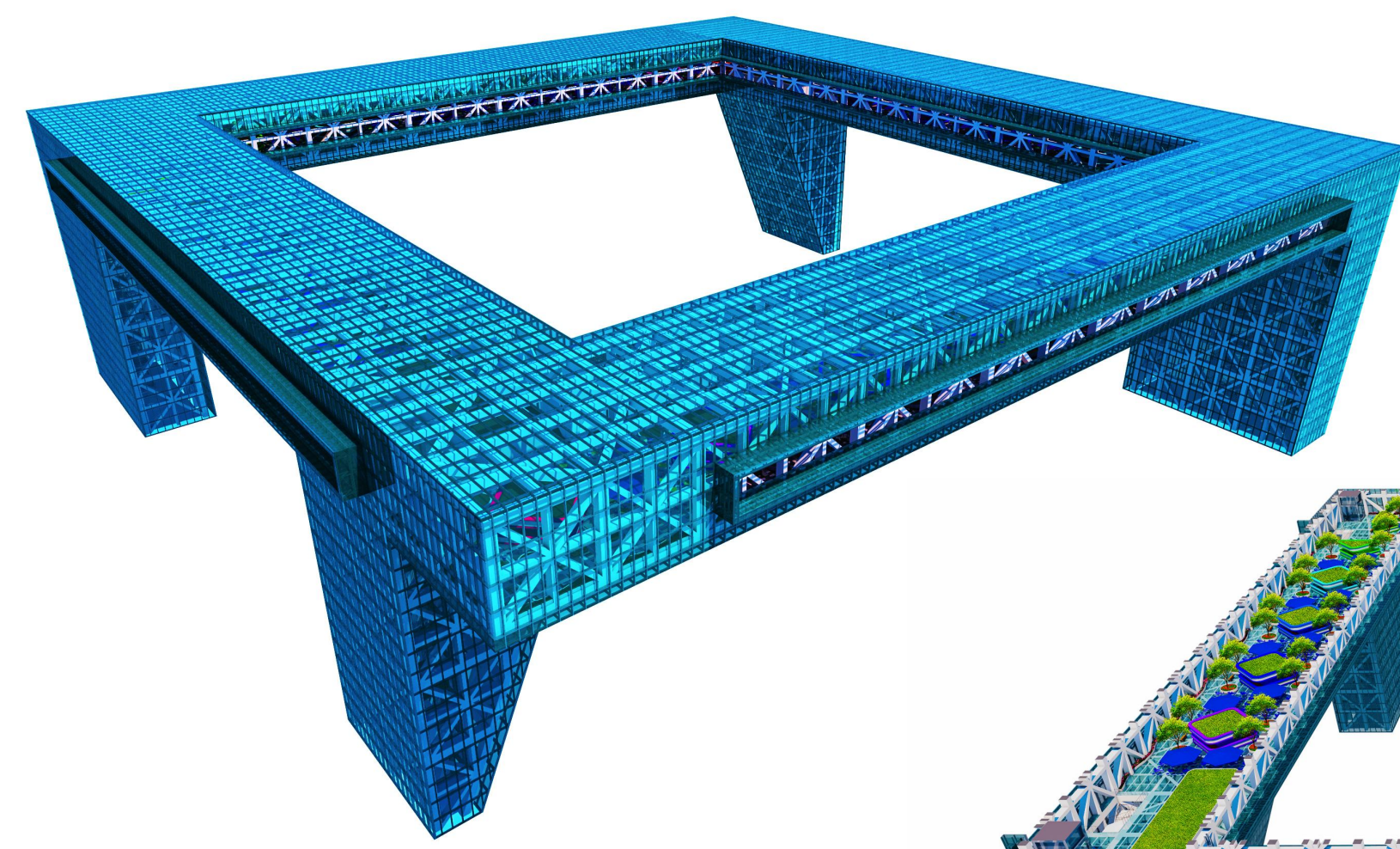
Seeking to be respectful with nature, it is considered for the lighting of the building, that being pulsating intermittent, adjustable in intensity (depending on the time and season) and at night time using mainly light from the shorter wavelength end of the spectrum - greens and blues - to get a less interference with the magnetic detection of the migration path, and the native fauna.



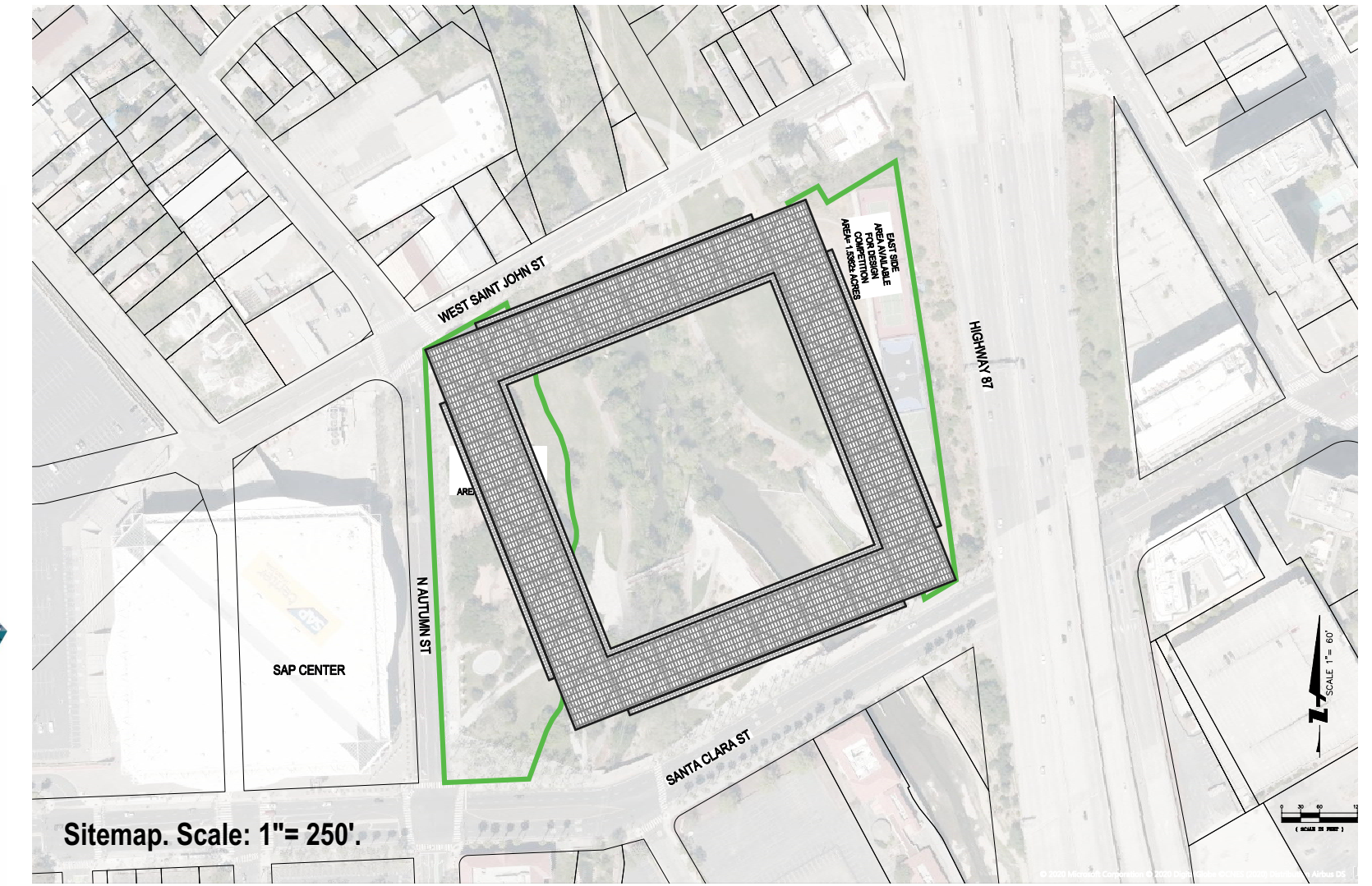
Interior terrace view. Level +162'.



# SAN JOSE LIGHT SQUARE



\*Chip, Processor and transparent glass LED display images downloaded from Pixabay.com



"(...) The "San Jose Light Square" is a landmark that represents the innovation of silicon valley, conceptually it's inspired by the geometry of the electronics, since it is a perfect square (that delimits a central space, -the park-) supported by four long columns, formally similar to electronic chips and processors.(...)"

Interior terrace view. Level +162'.



\*Background image from Google Earth.