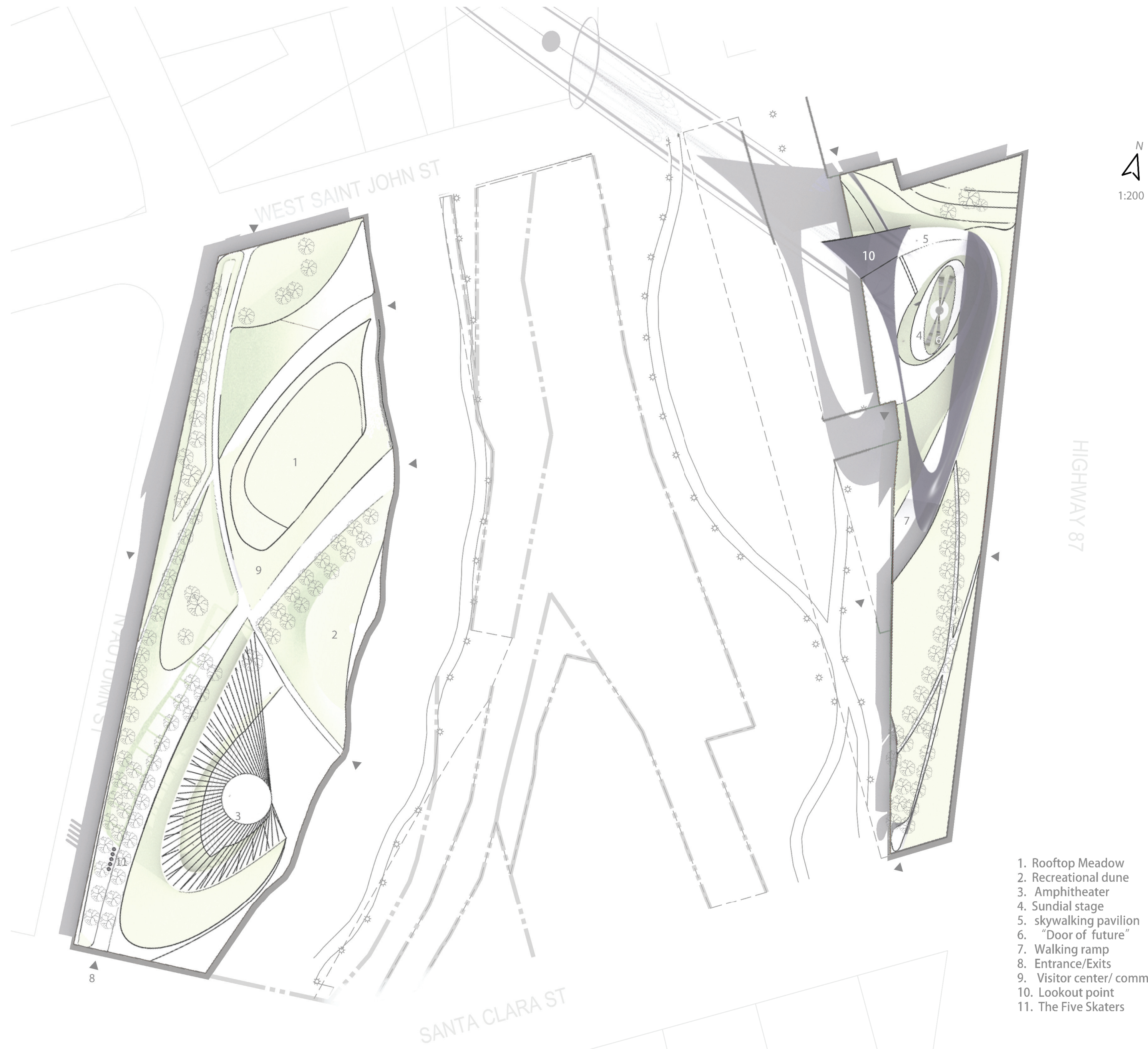
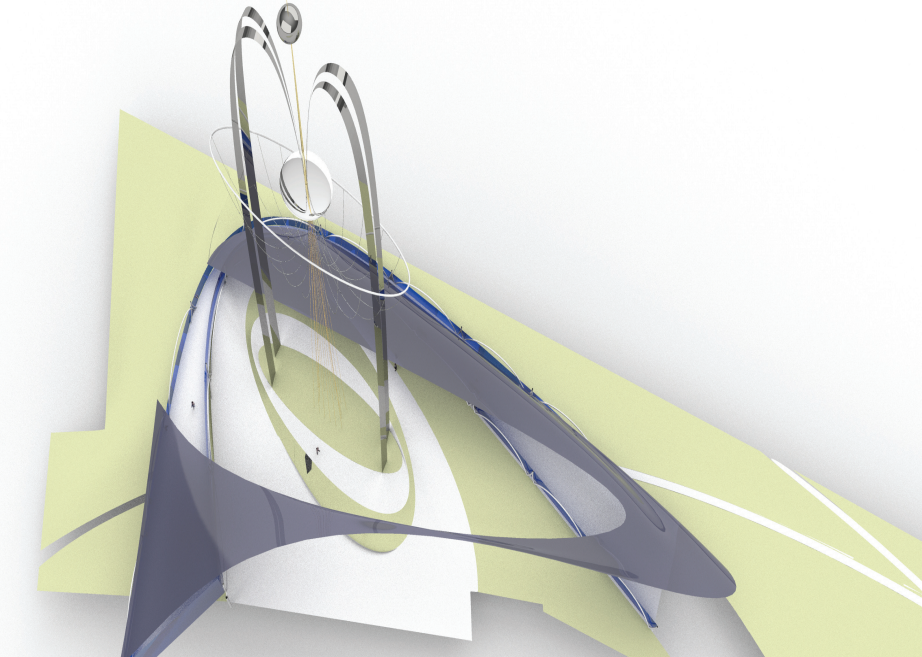
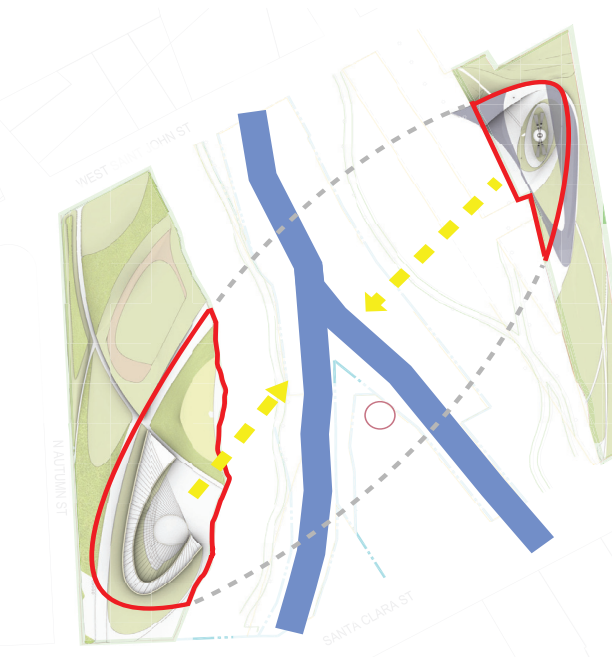


Urban Confluence

A circular light tower park towards the new landmark of the city of San Jose



1. Rooftop Meadow
2. Recreational dune
3. Amphitheater
4. Sundial stage
5. skywalking pavilion
6. "Door of future"
7. Walking ramp
8. Entrance/Exits
9. Visitor center/ commercials
10. Lookout point
11. The Five Skaters



San Jose legends in its intelligence, vitality, and fortune. A futuristic city as strength of the inclusiveness. Thus, the landmark is sculptured starting from a circle that wants to contain the whole site.

With a mandatory breakdown in two parts, each part of the circle presented as the main feature of their own side and in overall guided visual focal point towards the river confluence.

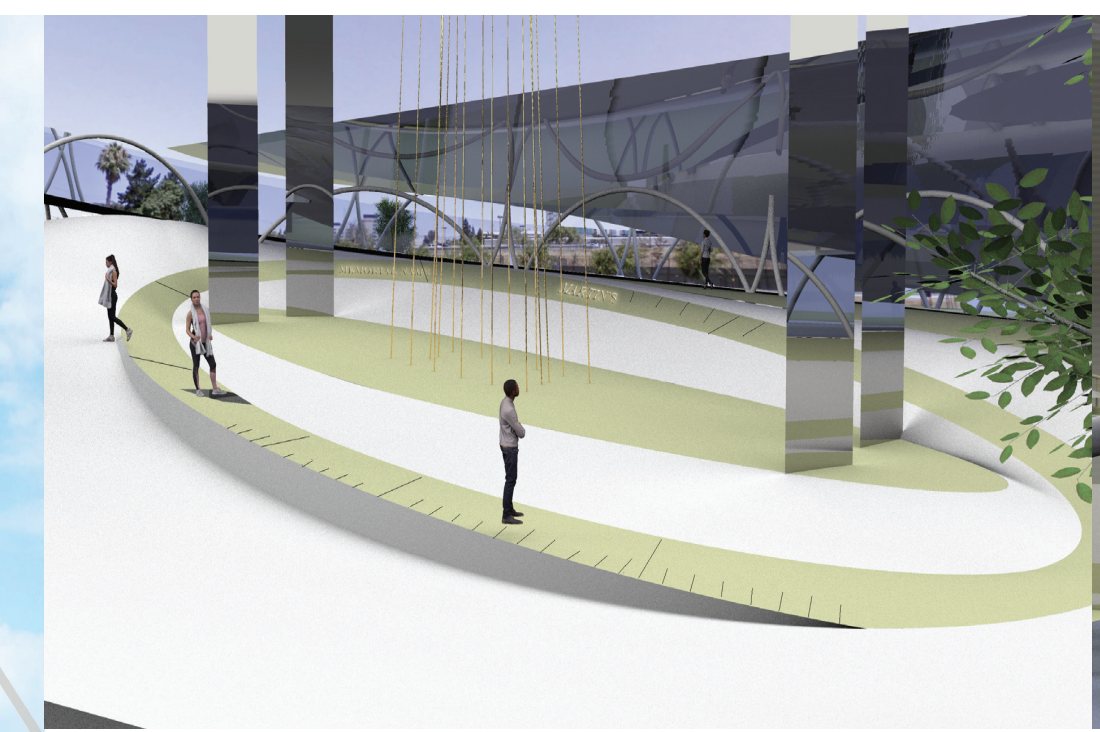
The east side stands the light tower "The Door of Future" with which an elliptical civic plaza is set as the focal point stage of the surrounding gathering place.



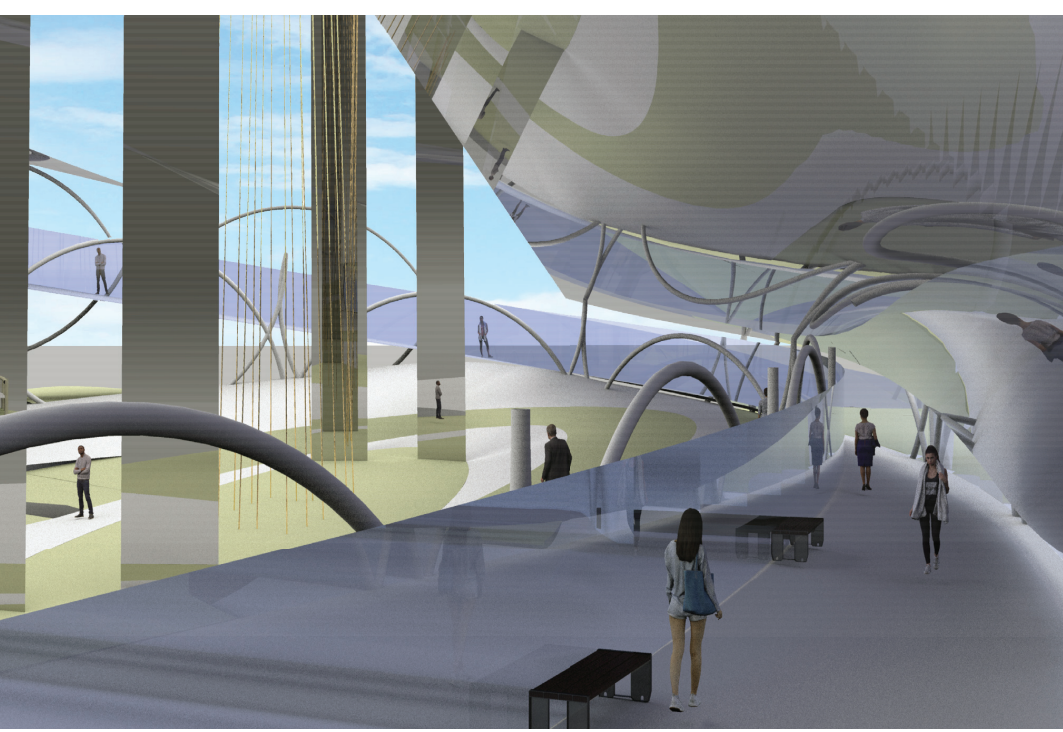
The project seeks to manifest the city of San Jose's identity that can be translated through a landmark. Arena Green park located at the downtown of San Jose is selected to accommodate the visitors and local communities in a manner of showcasing the uniqueness. With the Guadalupe river South-Northly running through, the site restricts the design under an ecologic concern. Meanwhile, the design needs to follow city planning protocols and regulations. Thus, this design challenges to solve the addressed concerns with a progression of approximating the city's best interpretation. It figured that the river confluence provides the biggest possible for the visitant navigation as well as becoming a part of the memory of the city's history that can be passed down to the generations, so it chooses to focus on anchoring the identity with the site's uniqueness by presenting the city's civic spirit through a combination of the art and nature.



The light tower is a carbon-steel structure stands 170 ft tall that can be seen within 8 miles radius.



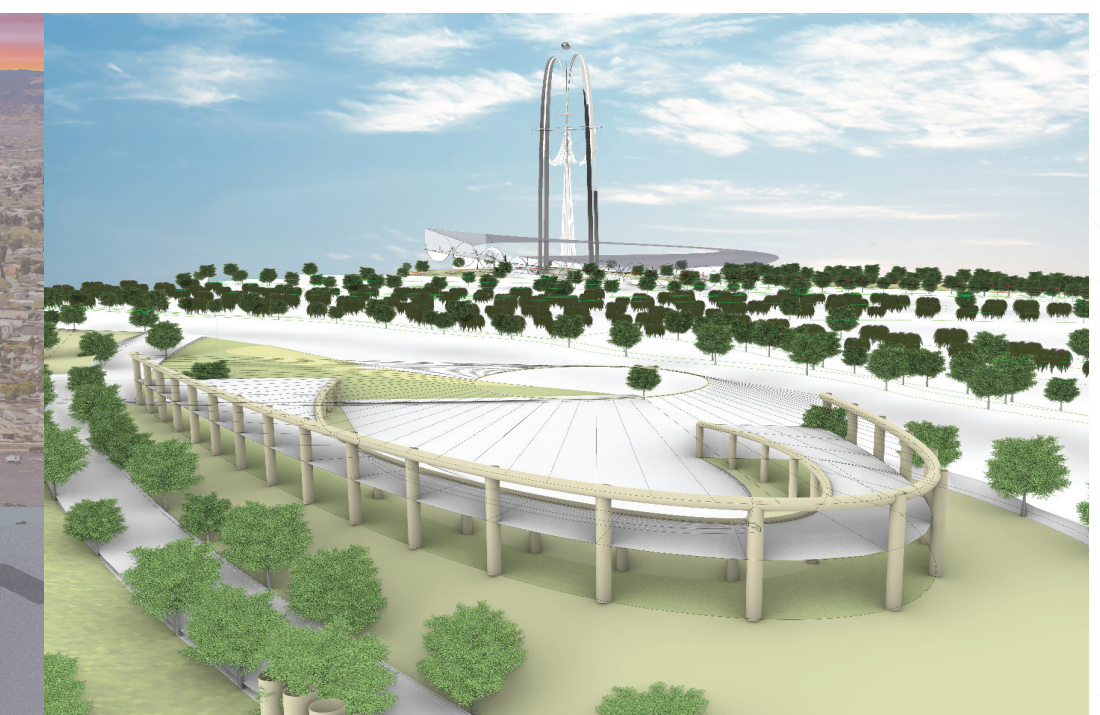
The elliptical plaza is designed as a memorial garden where the most memorable names of the city of San Jose will collecting to be engraved. Besides, the plaza ground also serves as a sundial scale in a corporation with the circulating shadow of light tower.



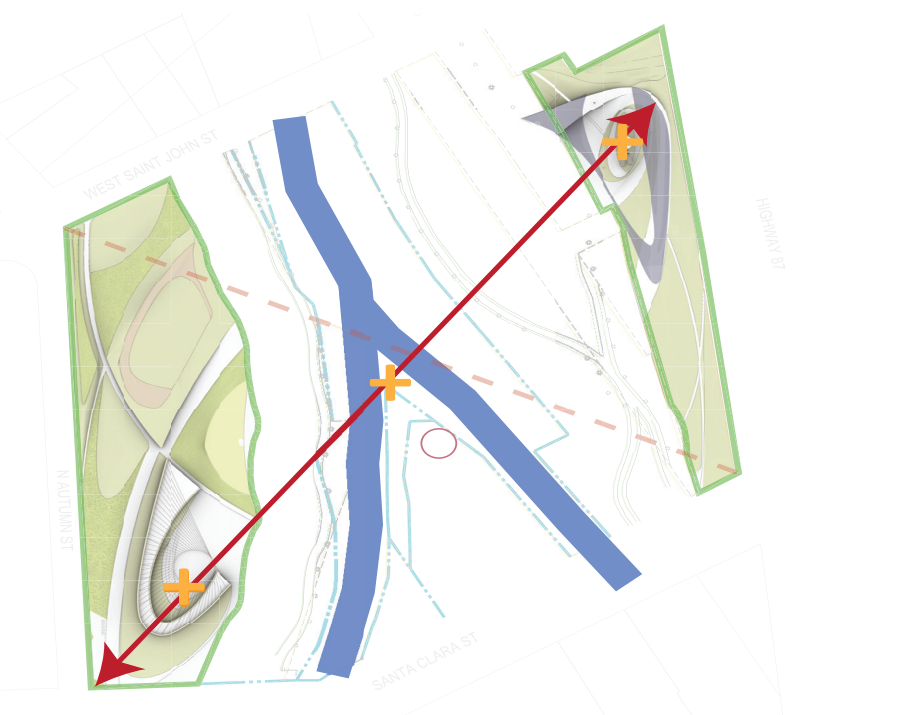
A skywalk bridge bending towards the confluence point intends to attract the visitors to access the elevated lookout point where a panoramic image of the city backgrounded with the sunset is lunched for the shots.



While the scenery admirers are looking from the east side, the west side visitors are also taking the east side as a scenery view.



The west side of the site sits an amphitheater that can host a at least 300-people-event facing to the background of the confluence point and the iconic light tower.



Thus, an axis that threads light tower, confluence point, and the amphitheater leverages the longest diagonal distance as an essential element for inspiring the awe to break the spatial size limitation of the site and also shows the biggest respect to the site original texture.

