

# "TWO RIVERS, ONE POINT"

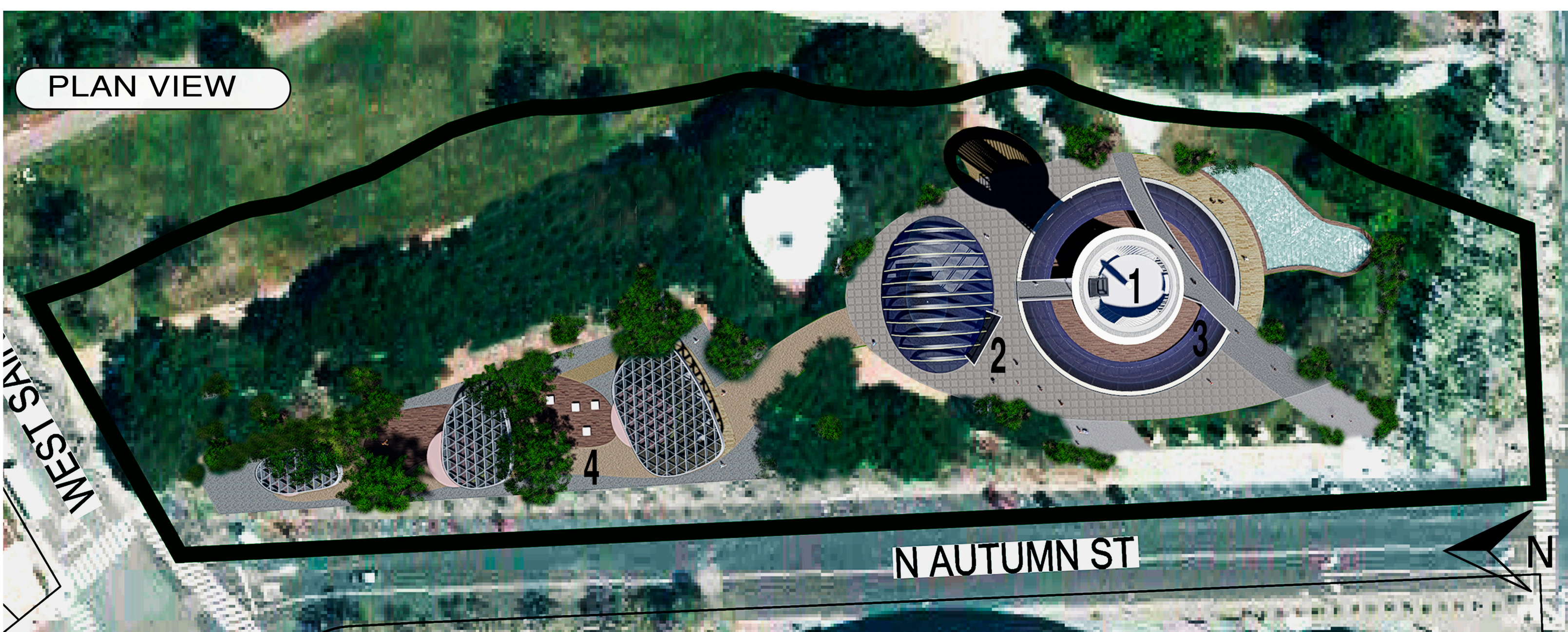


AERIAL VIEW



The architectural design of this emblem represents the confluence of the two rivers, at a very important technological and geographical point for the world. Under these premises, the search for the formal proposal and the function of this structure was obtained.

PERSPECTIVE VIEW



PLAN VIEW



SITE MAP

LOCATION OF LANDMARK WEST SIDE

MAIN ICONIC STRUCTURE

1

MAIN ENTRANCE HALL

2

SKY LIGHT FOR UNDERGROUND MUSEUM / POLY-SPACE

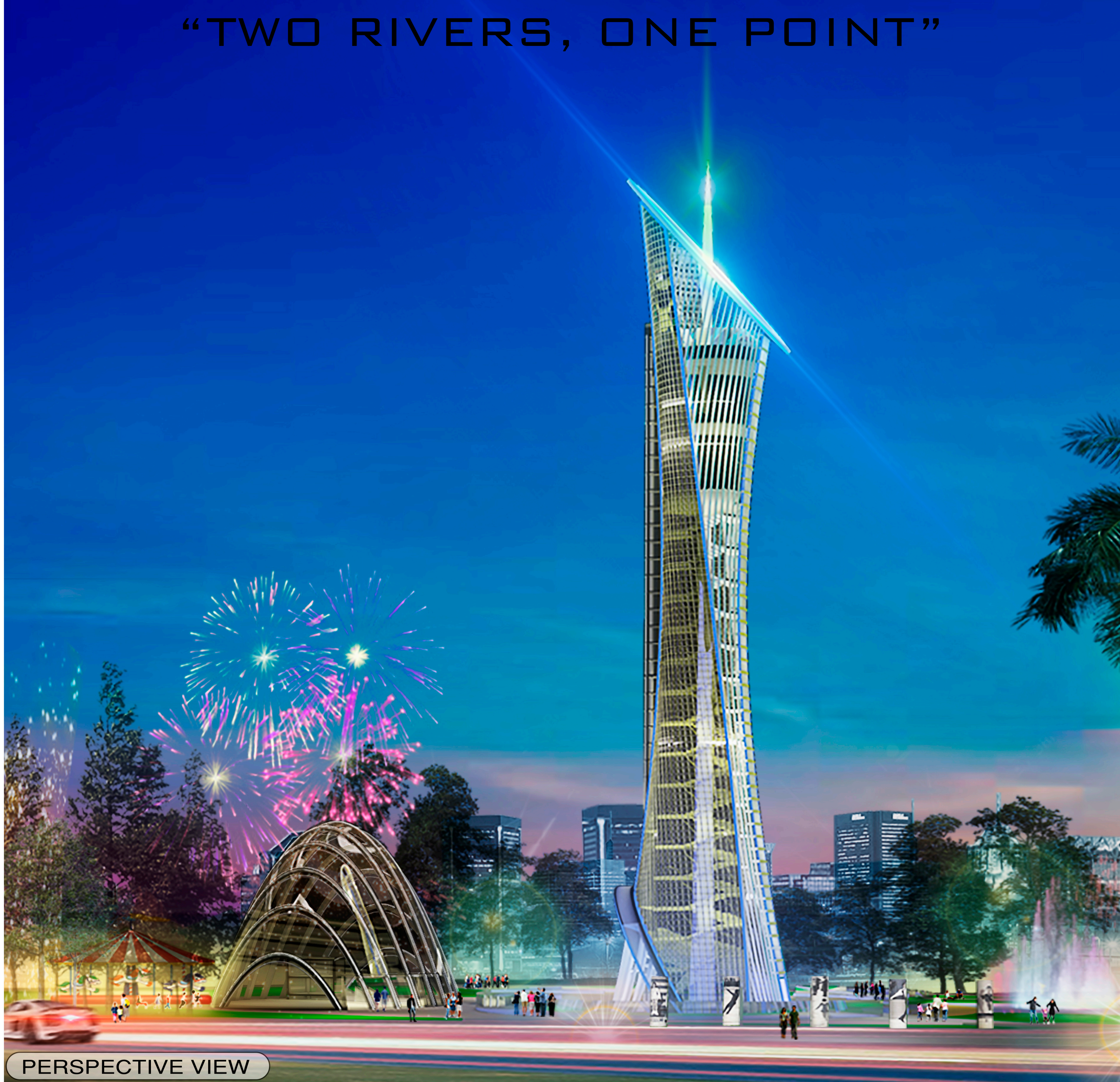
3

RESTAURANT / RETAIL AREA

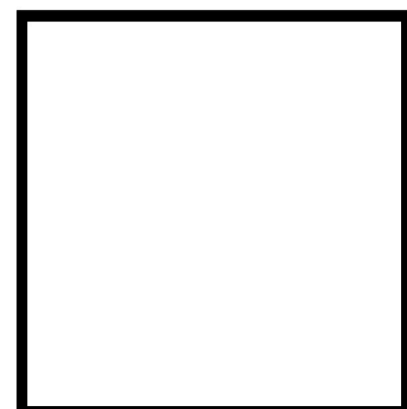
4



# "TWO RIVERS, ONE POINT"



PERSPECTIVE VIEW

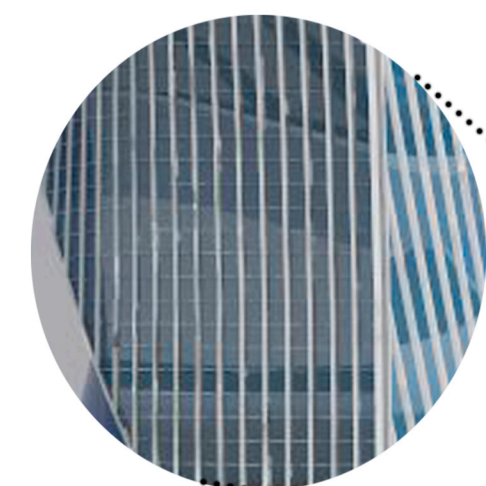


## SOLAR PHOTOVOLTAIC GLASS FACADE

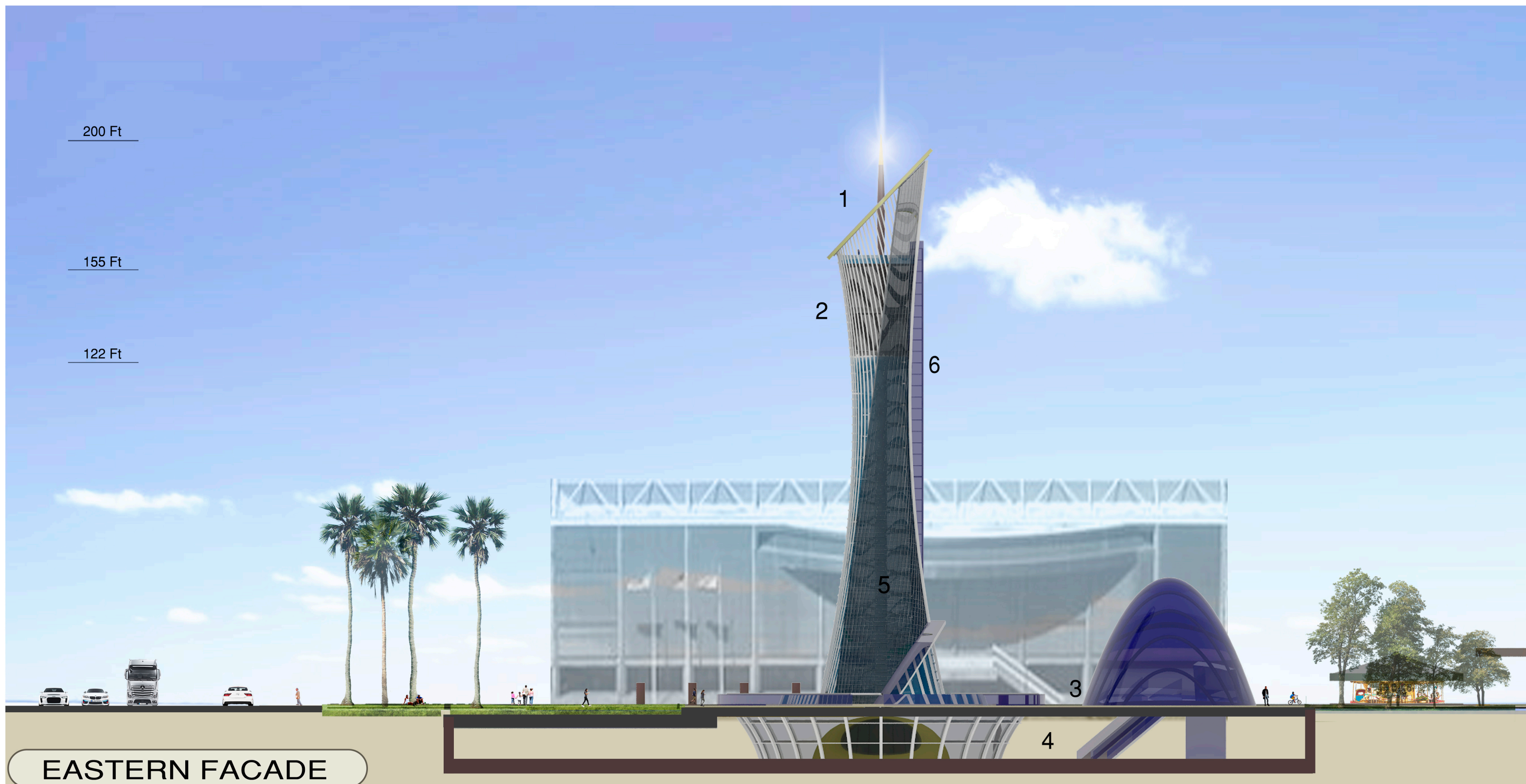
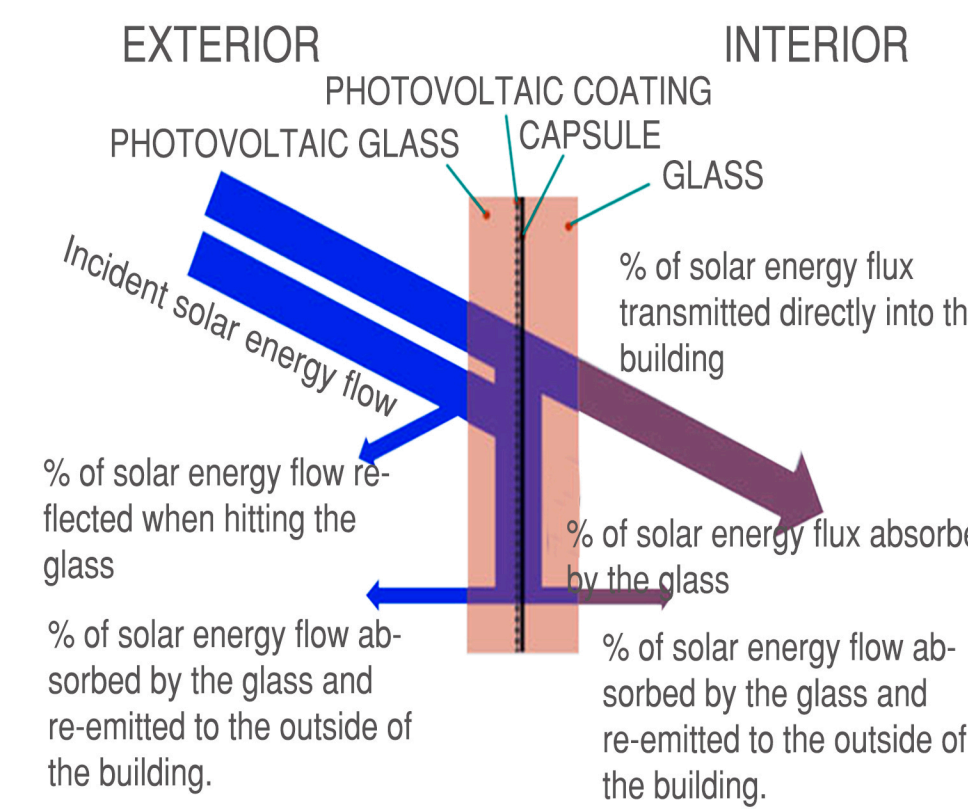
Imagine a world where objects are connected to the Internet and the surfaces of materials are capable of generating electricity. Such a future is entirely possible thanks to technologies such as photovoltaic glass, which applies the analogy and philosophy of the internet to electricity production.

This Icon can represent this new energy revolution that has been ascending; "The icon of Silicon Valley in San Jose will be covered with a transparent glass skin capable of capturing and storing the energy of sunlight and transforming it into electricity"; An icon that represents the future in materials for architecture.

### SOLAR PHOTOVOLTAIC GLASS PANELS AND EXO-SKIN STRUCTURE



### PHOTOVOLTAIC GLASS DIAGRAM

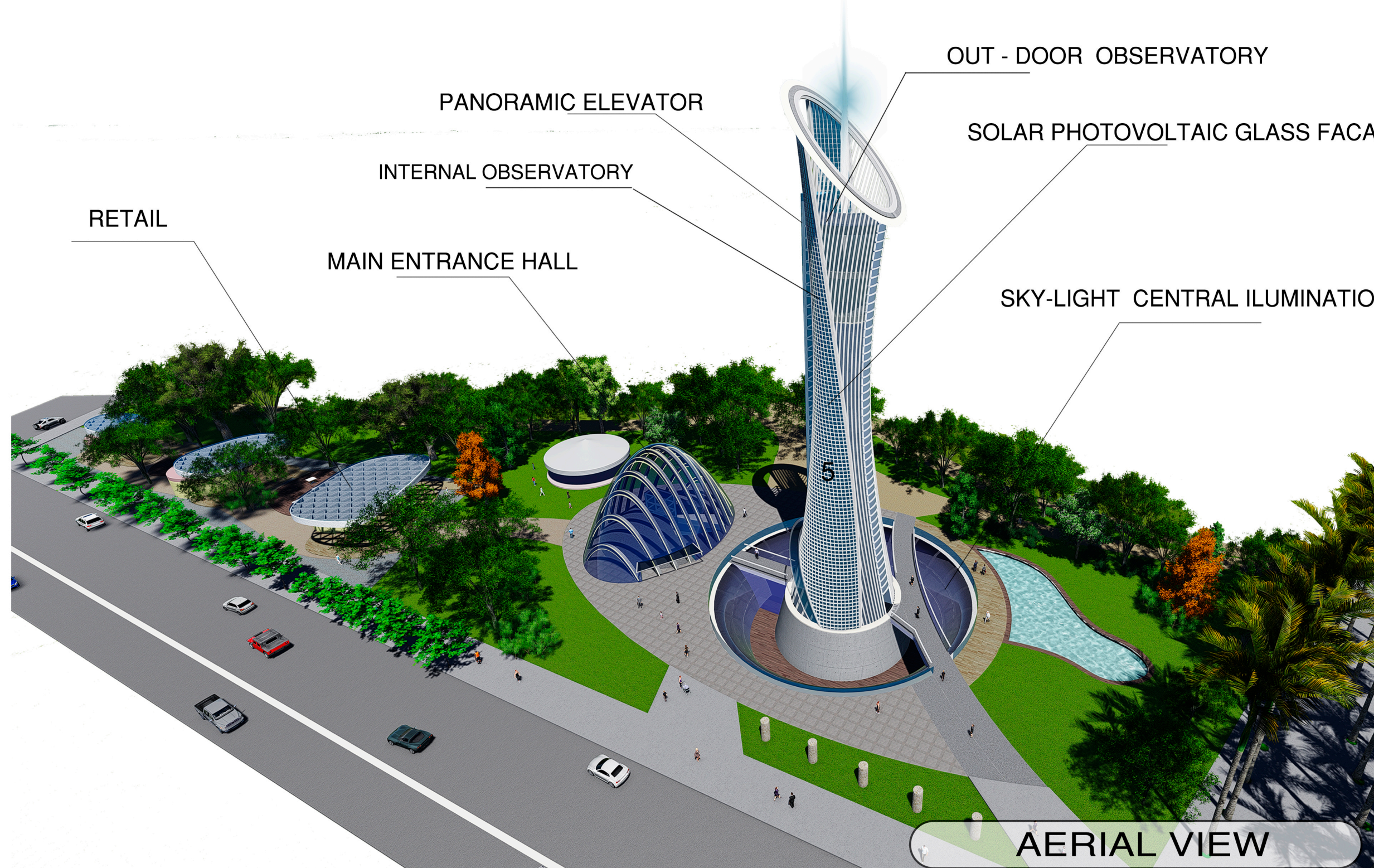


EASTERN FACADE

- 1 OUT - DOOR OBSERVATORY
- 2 IN - DOOR OBSERVATORY
- 3 MAIN ENTRANCE HALL
- 4 UNDERGROUND MUSEUM / POLIFUNCTIONAL SPACE
- 5 SOLAR PHOTOVOLTAIC GLASS TECHNOLOGY NET-ZERO EMISSION
- 6 PANORAMIC LIFT



SOUTHERN FACADE



AERIAL VIEW

- 1 OUT - DOOR OBSERVATORY
- 2 SOLAR PHOTOVOLTAIC GLASS FACADE
- 3 SKY-LIGHT CENTRAL ILLUMINATION
- 4 RETAIL
- 5 MAIN ENTRANCE HALL
- 6 PANORAMIC ELEVATOR
- 7 INTERNAL OBSERVATORY