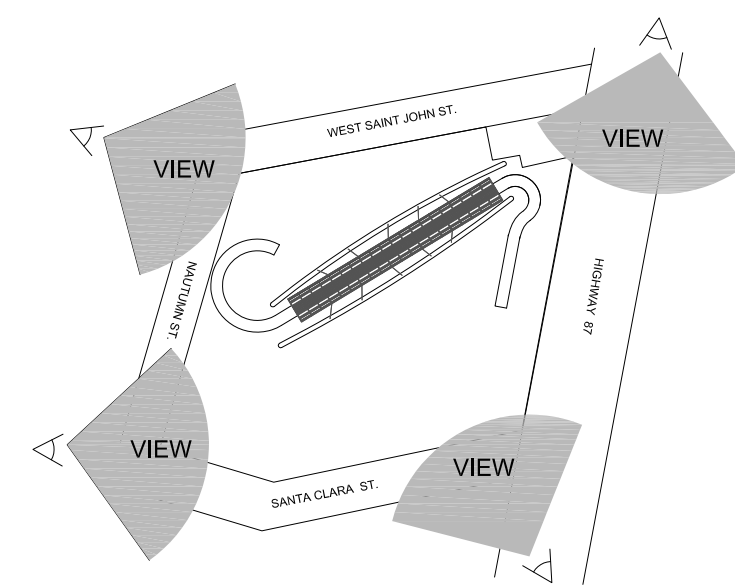
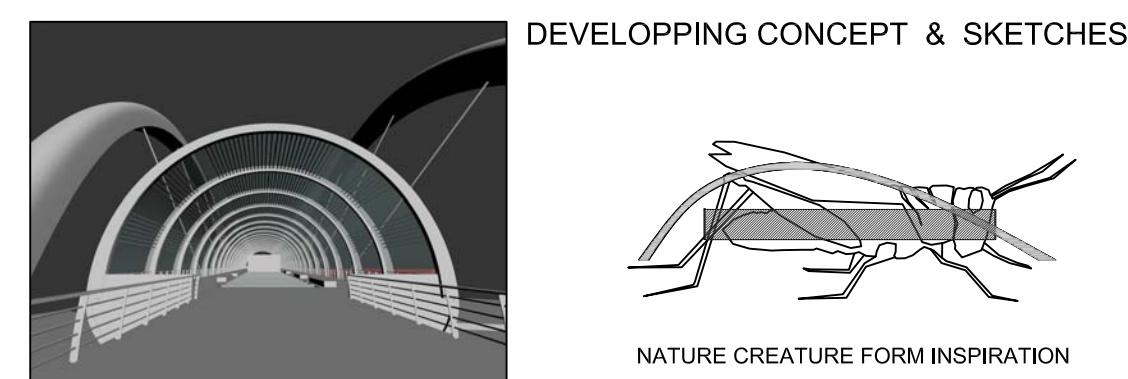
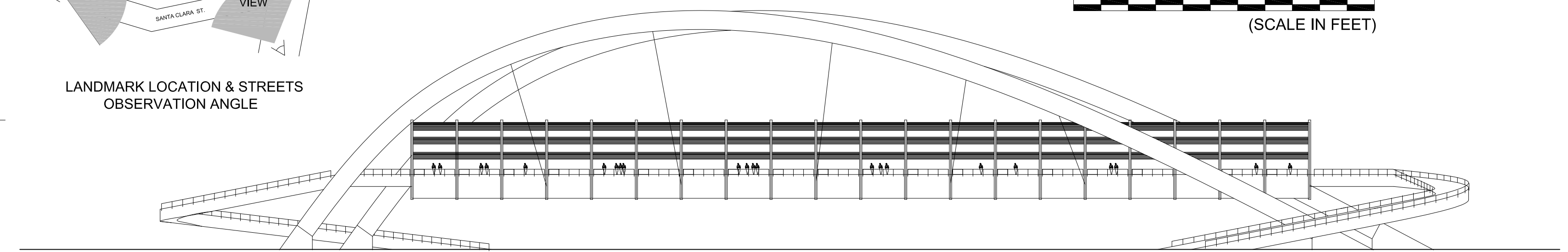
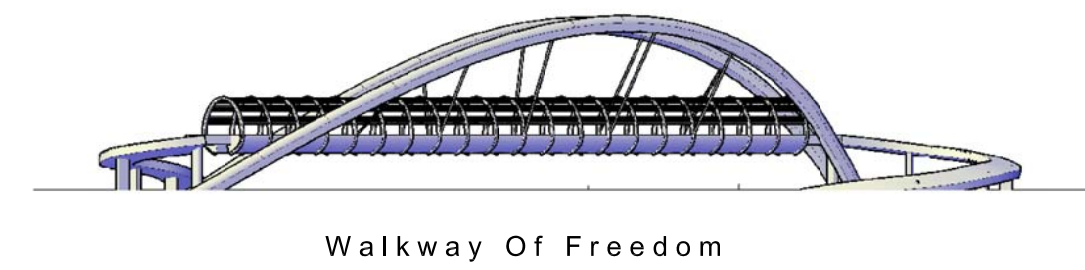
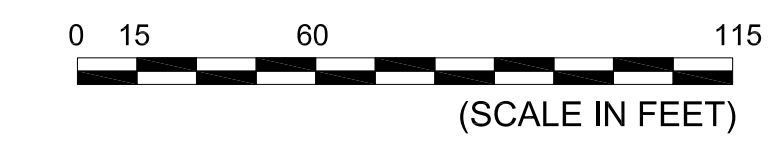


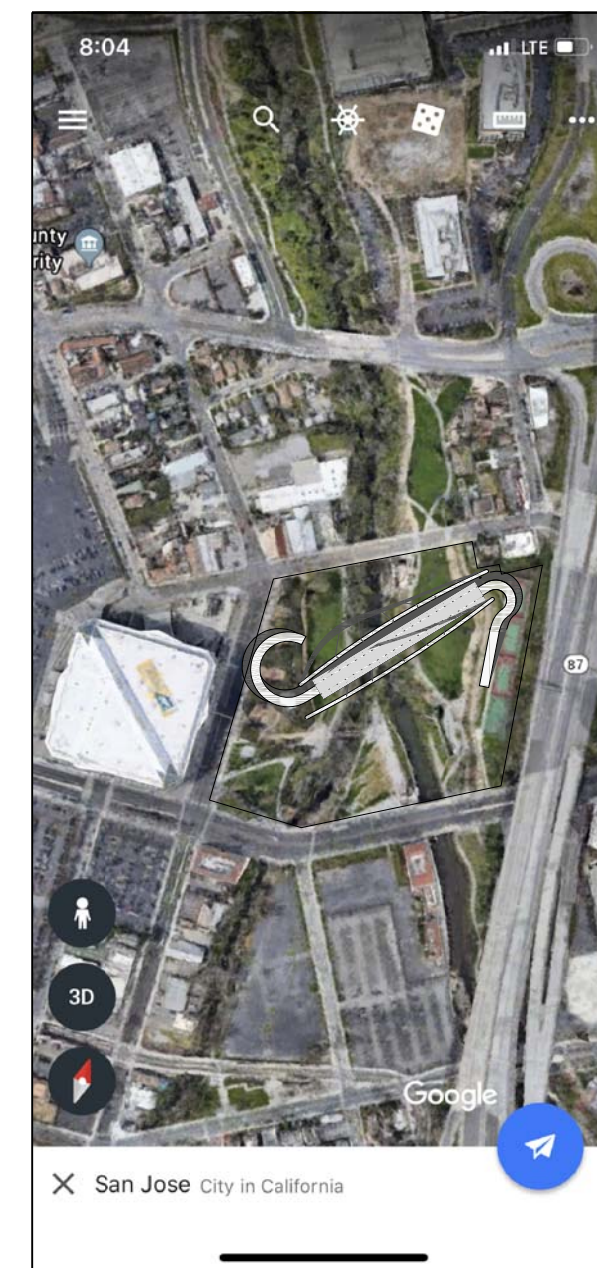
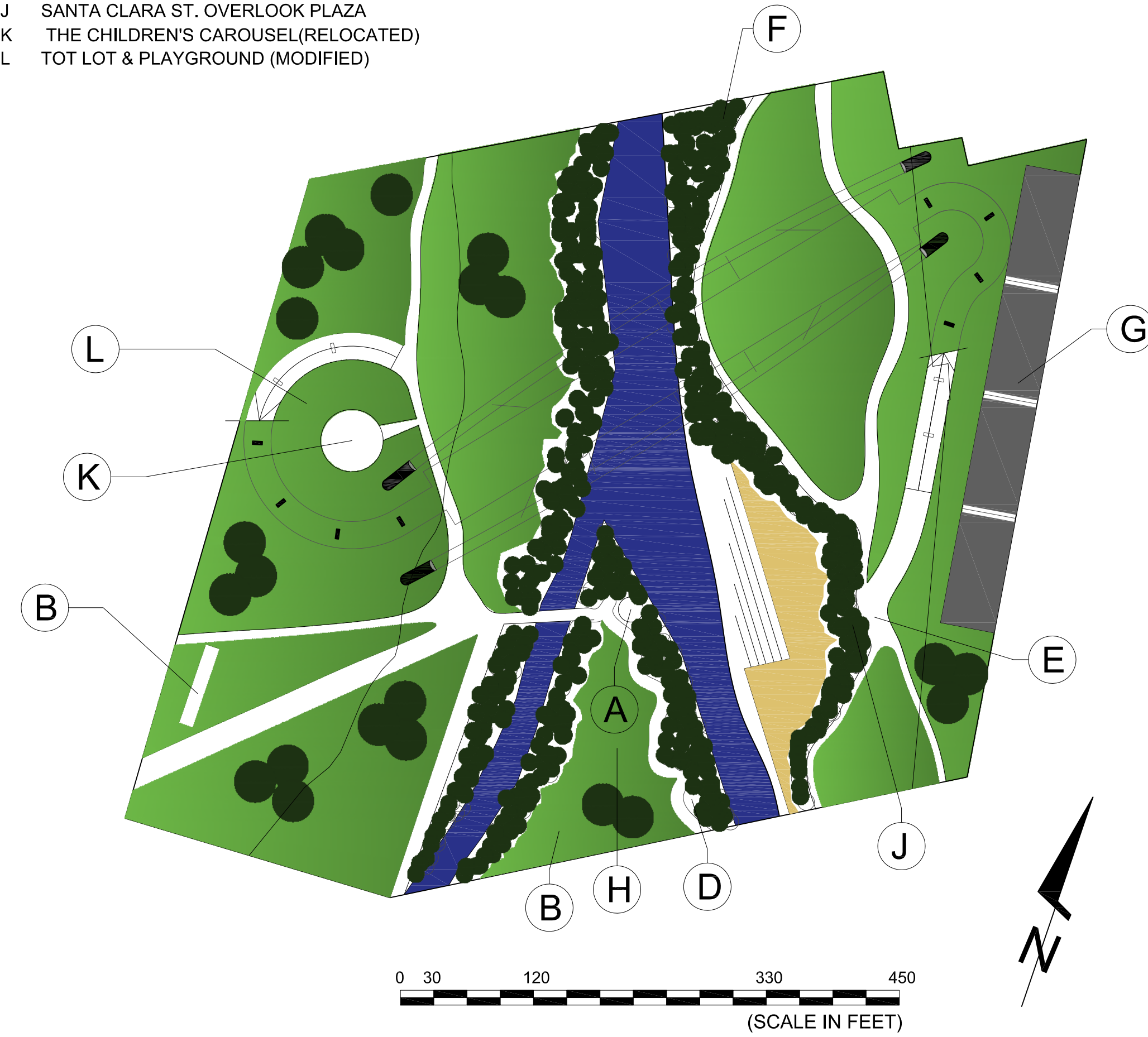
# URBAN CONFLUENCE SILICON VALLEY



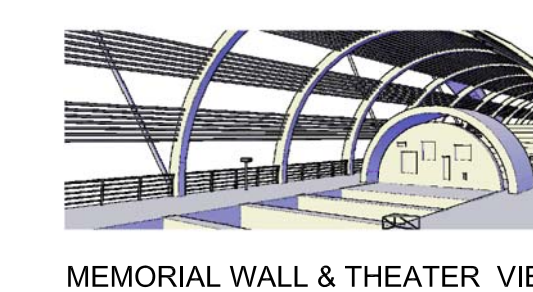
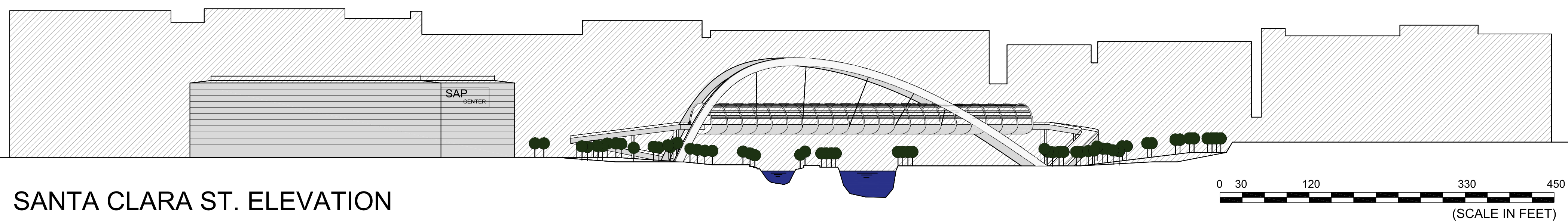
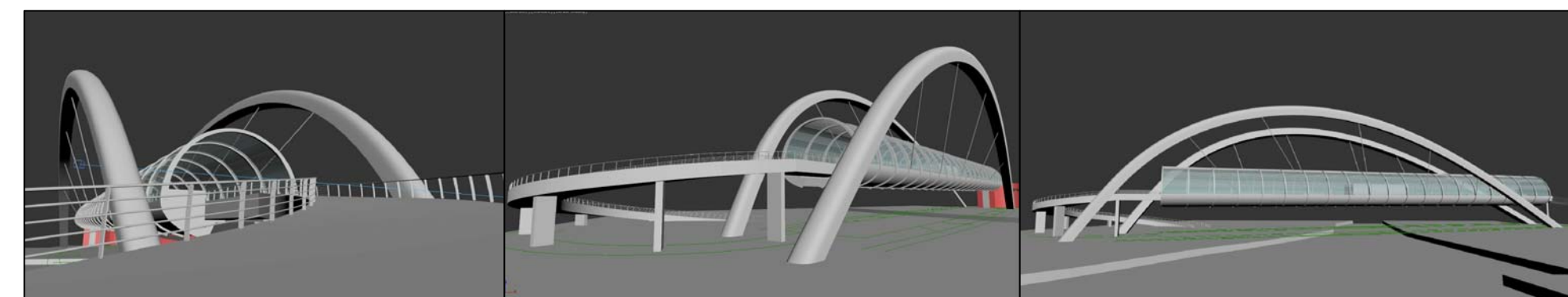
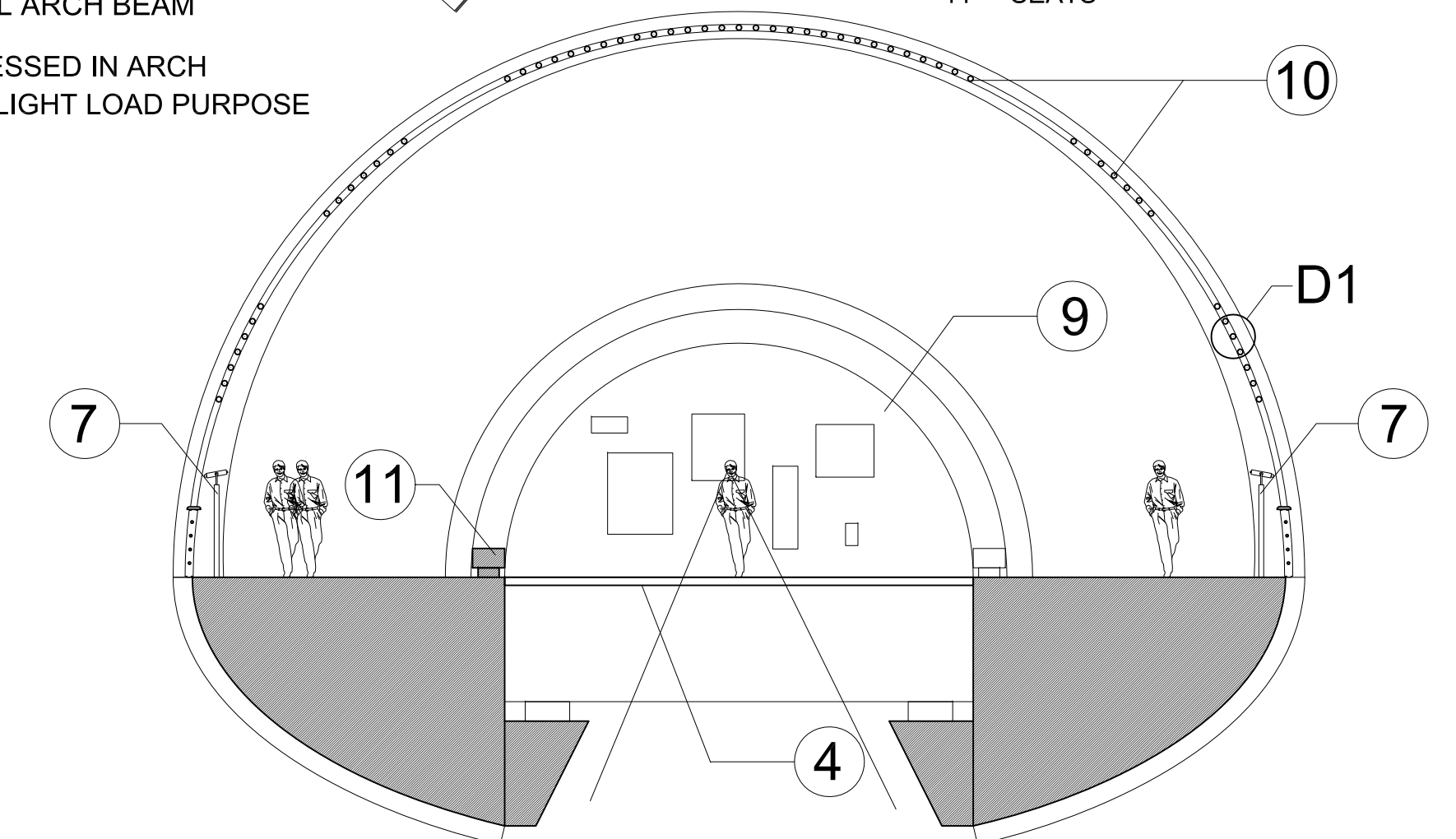
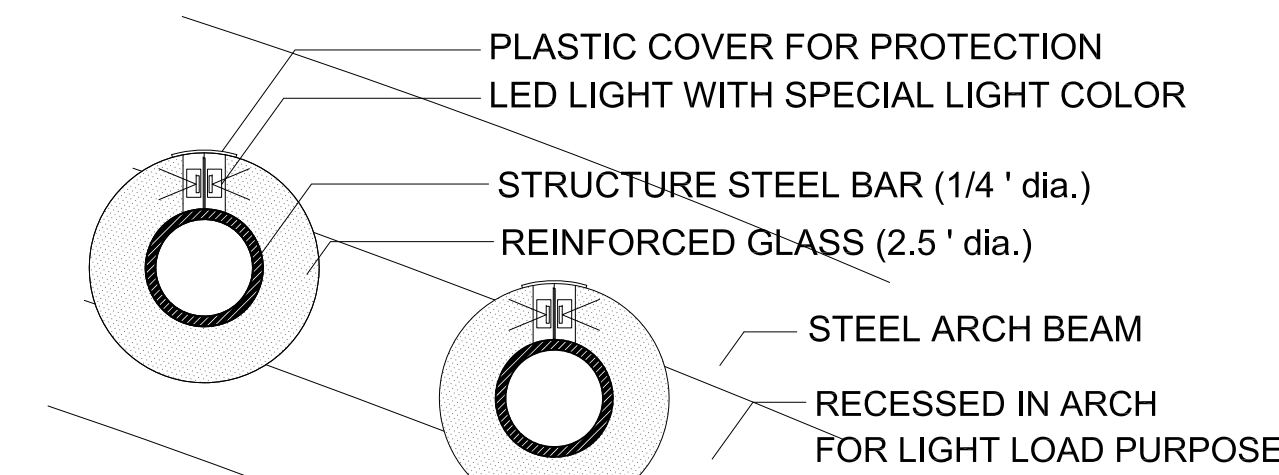
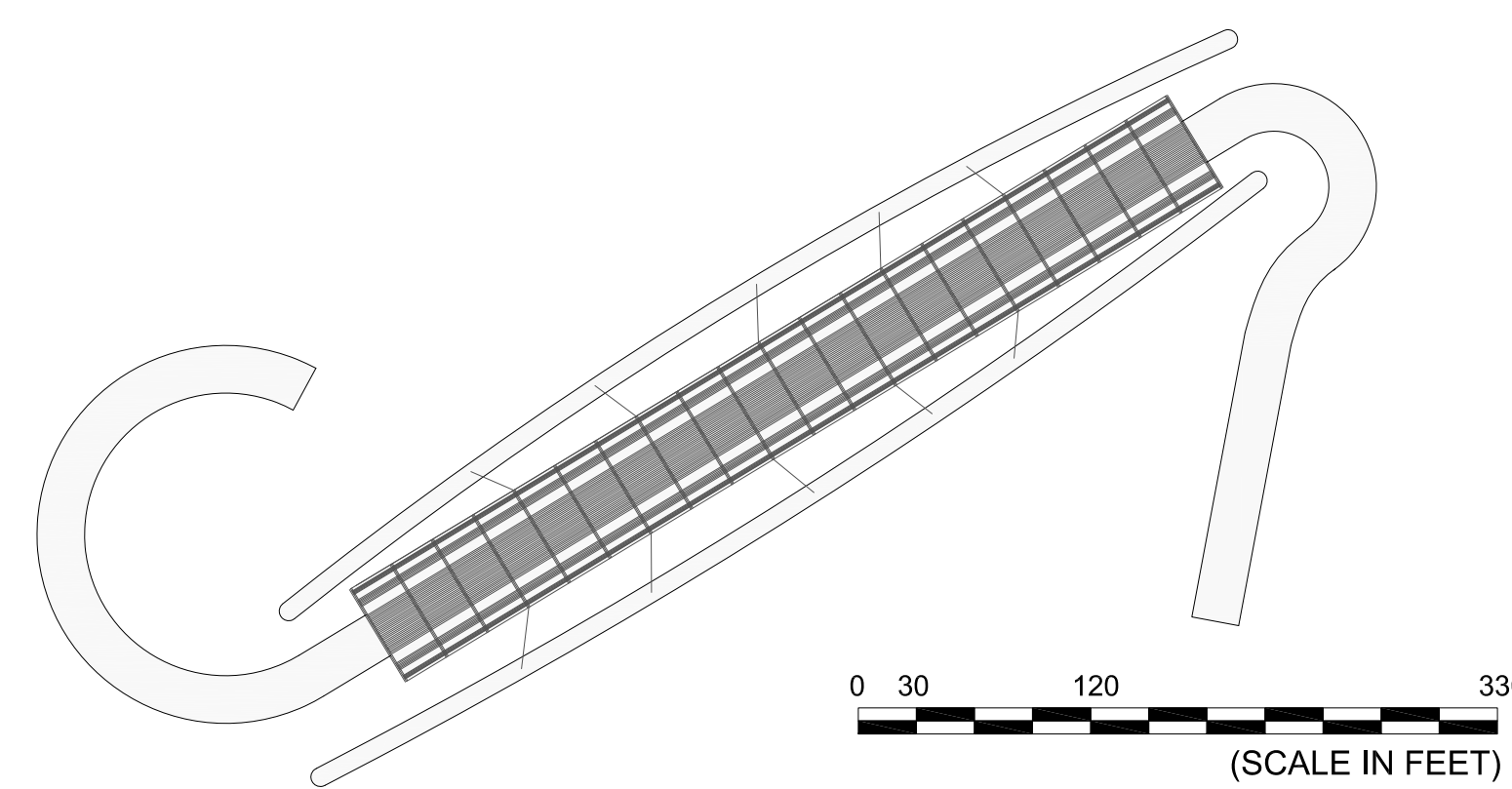
## LANDMARK ELEVATION



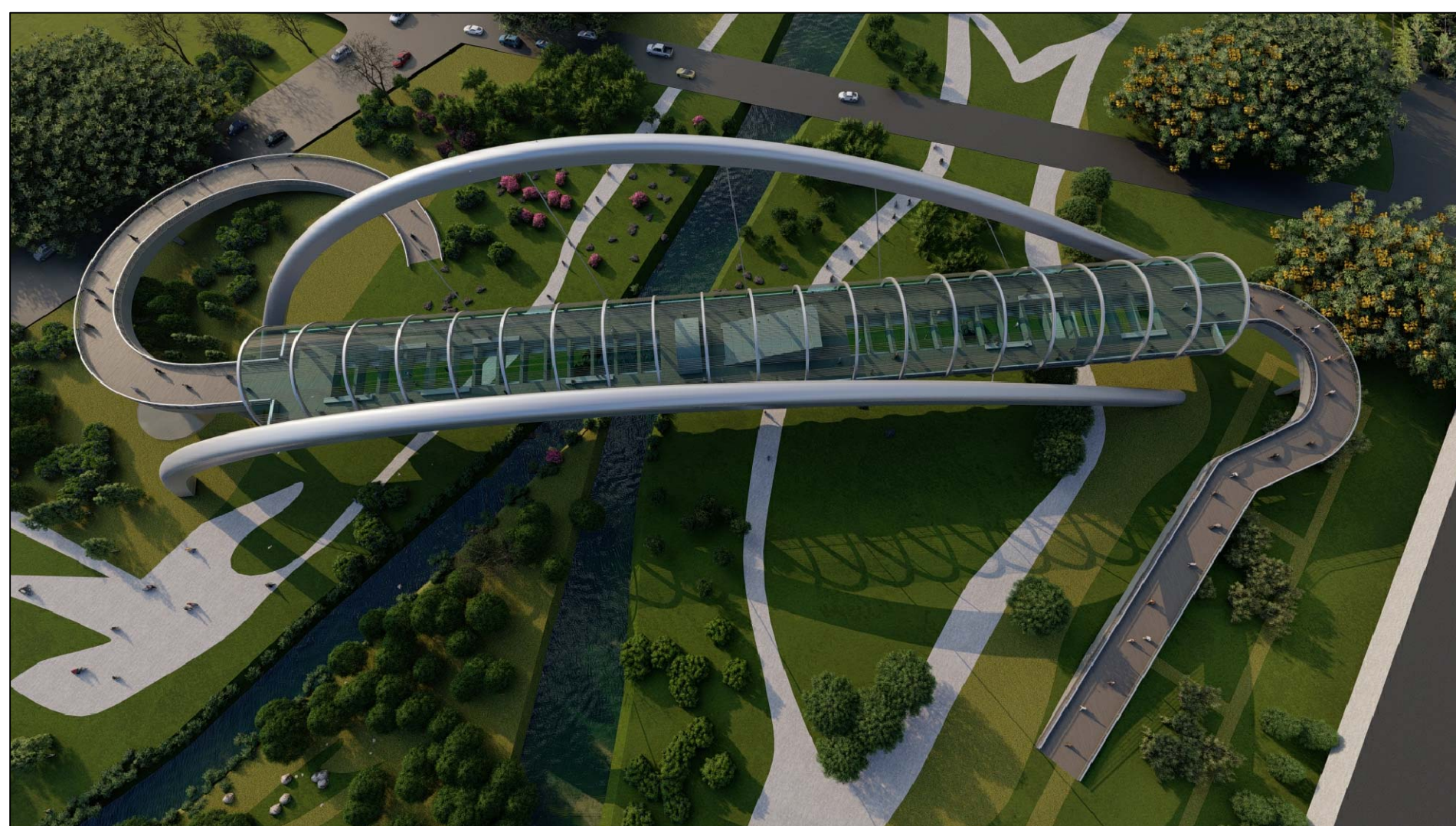
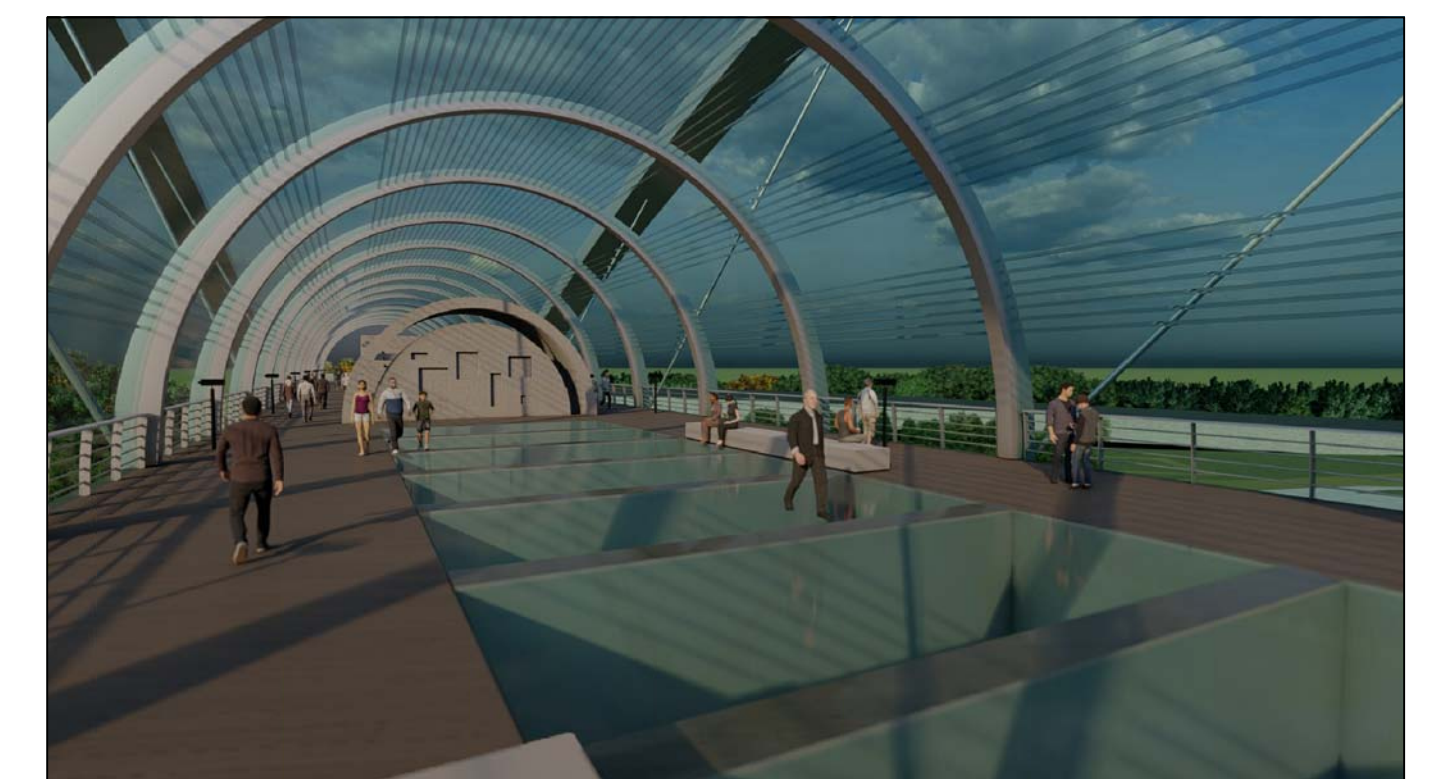
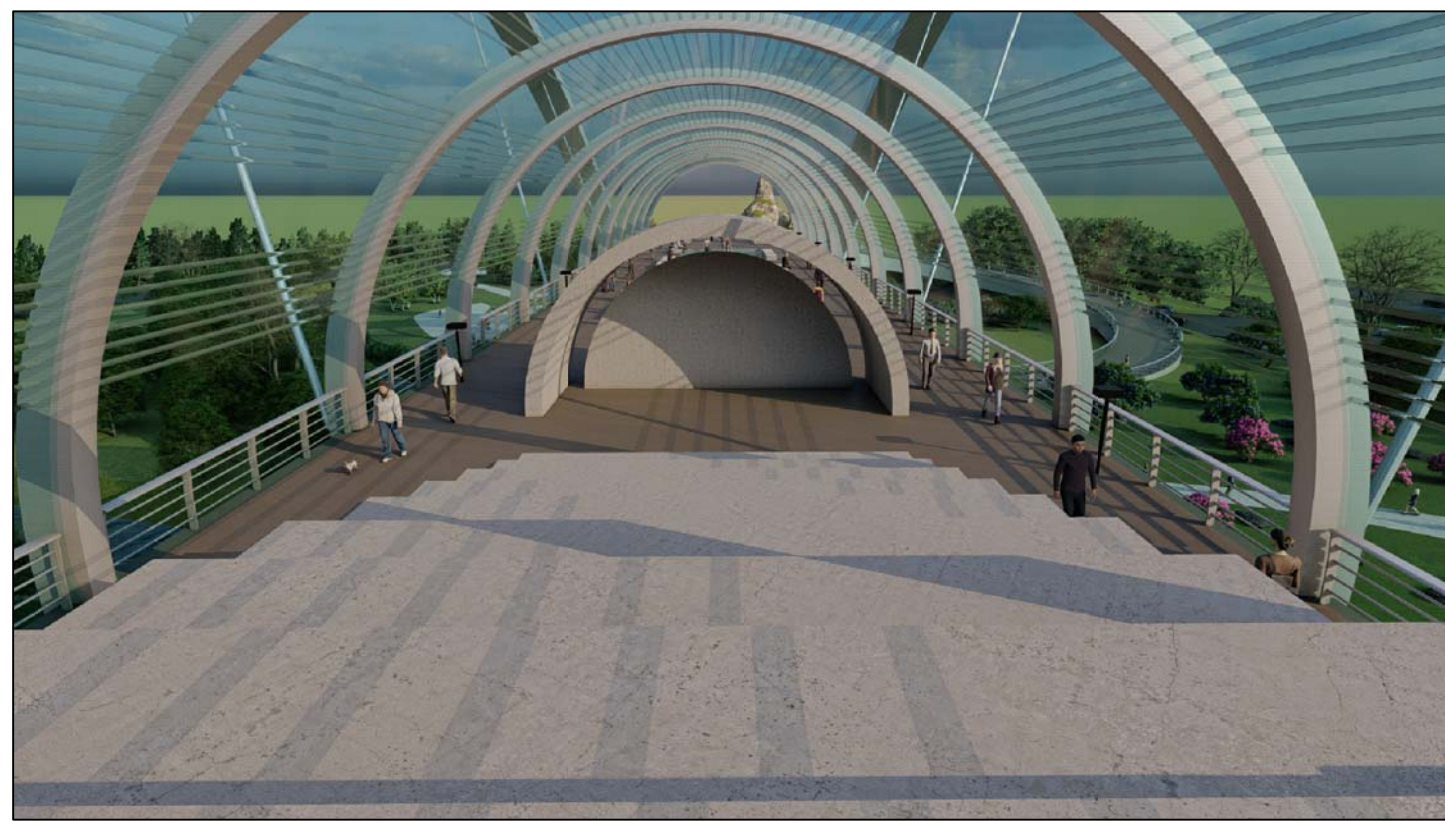
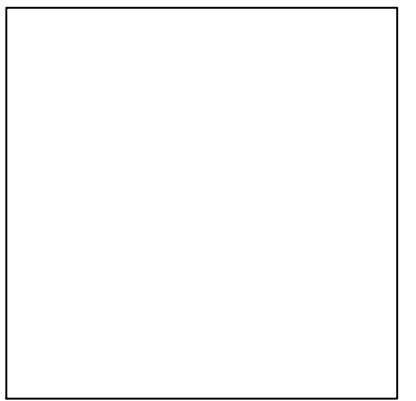
- A WEAVER'S GIFT (RESERVED)
- B FIVE SKATERS (RESERVED)
- C SAN JOSE VIETNAM MEMORIAL (RESERVED)
- D RANGERS STATION (RESERVED)
- E TRIBUTARIES MONUMENT (RESERVED)
- F ST. JOHN ST. OVERLOOK PLAZA
- G TENNIS COURT (RESERVED)
- H CONFLUENCE POINT
- J SANTA CLARA ST. OVERLOOK PLAZA
- K THE CHILDREN'S CAROUSEL(RELOCATED)
- L TOT LOT & PLAYGROUND (MODIFIED)



- 1 SYMBOLIC STRUCTURE ARCHES
- 2 OBSERVATORY BRIDGE
- 3 TENSION CABLES
- 4 GLASS TRANSPARENT FLOOR TO SEE DOWN VIEW
- 5 AMPHITHEATER 50 PERS.
- 6 CAFETERIA WITH COUNTER BAR
- 7 OBSERVATORY TELESCOPE
- 8 RAMPS UP & DOWN
- 9 MEMORIAL EXHIBITION WALL
- 10 GLASS TUBULOR LIGHT
- 11 SEATS







URBAN  
CONFLUENCE  
SILICON VALLEY