

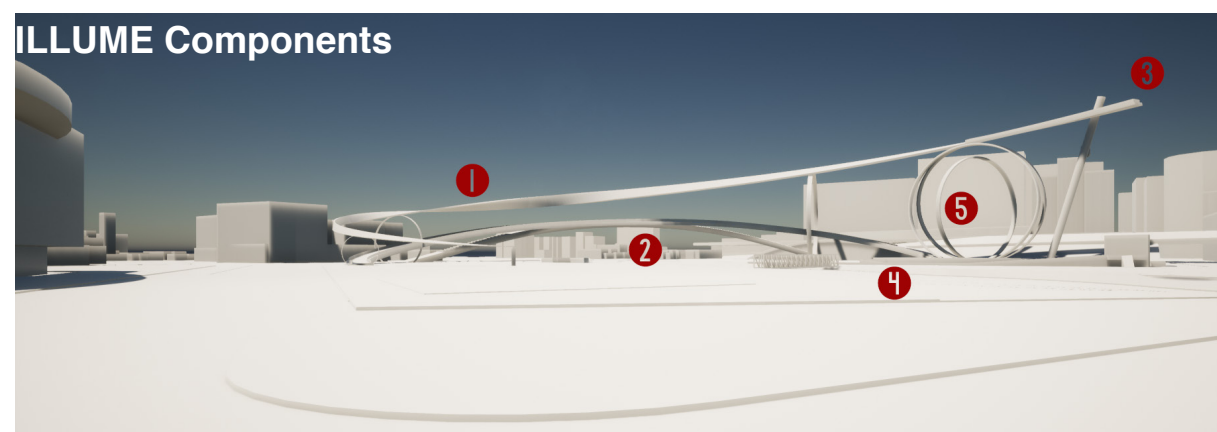
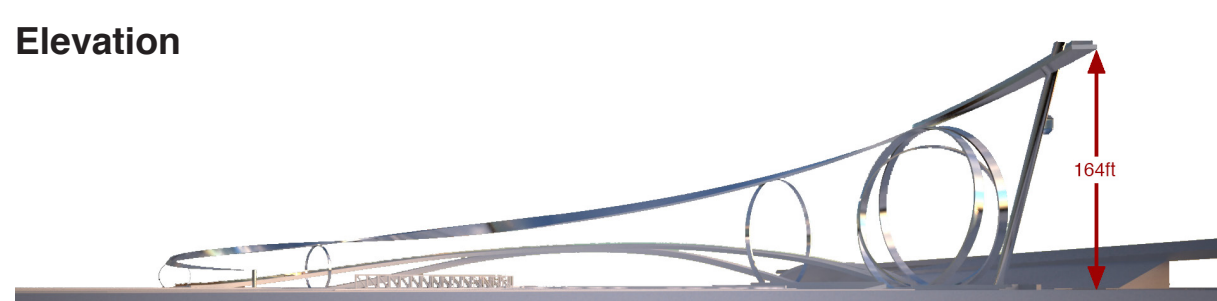
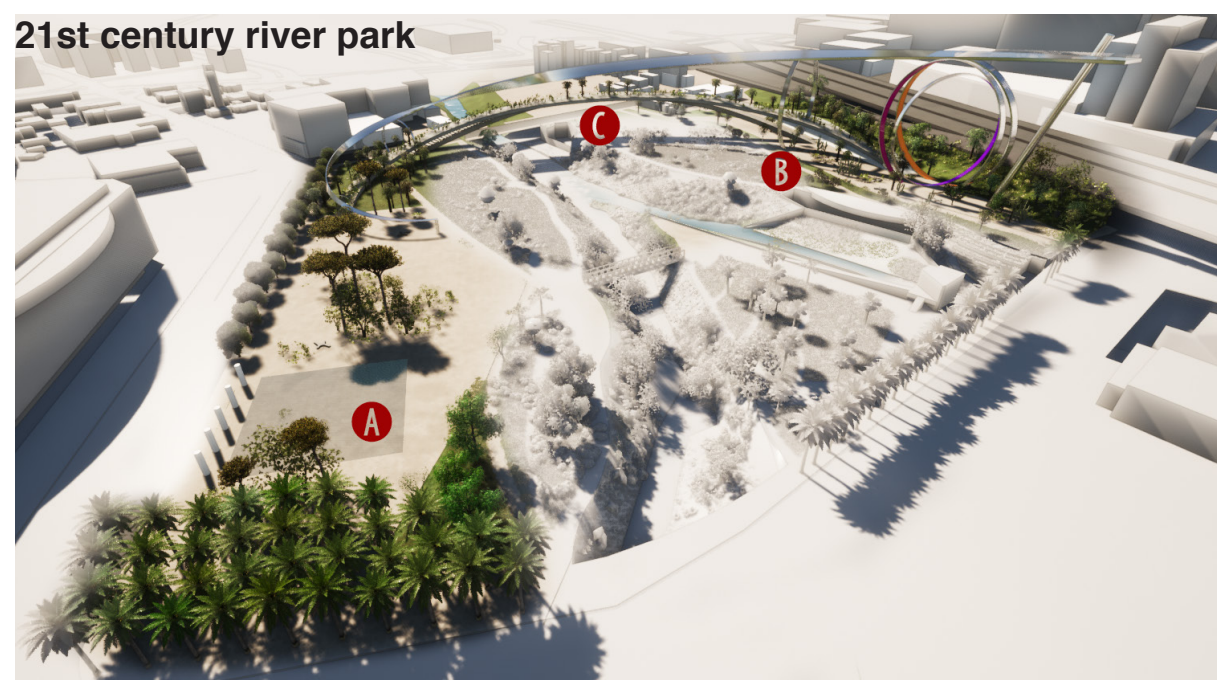
ILLUME

The best way to predict the future is for humankind to invent it.

Inspiration

An artist led multidisciplinary team took as its inspiration the notion of "Confluence" a convergence and fluid gathering of rivers and landscapes, people and culture, and forces and events.

The physical convergence of flowing water of the Guadalupe River and the Los Gatos Creek becomes a metaphor for different evolved narratives. The flow of beliefs and values forever shaping how we think, feel, and act – a story of human ability and endeavours to adapt and evolve.



ILLUME - to give Light

A monumental Fibonacci sequence ribbon intertwined with reflective rings, transforms the site into instantly memorable sculptural landmark when shared on social media, or seen against the sky from the ground and from airplanes overhead. The artwork is defined by two ribbon Arcs, dramatically framing the river confluence and connecting both the East and West sides of the site in the airspace above the river corridor. This is achieved with all the required foundation/ground construction limited to the competition permissible zones. The Fibonacci sequence geometry resonates with many manifestations from DNA molecules to forms in nature and galaxies. Importantly we feel, it echoes human aspiration and Genius Loci—the protective spirit of a place of San Jose and Silicon Valley. While timeless, the Fibonacci sequence of natural exponential growth captures the ethos of Silicon Valley and the transformative impact of the digital economy.

Bigger Picture - A new 21st century river park
Integrating ILLUME within an innovative 21st Century park could become a significant social, cultural and economic Silicon Valley driver - a world class public destination for contemplation, recreation, and activation. As a destination, it could become a meeting place and celebrating space, a fusion of social, digital, and ecological. The operation of the park and visitor centre could adopt corporate social responsibility targets and practices, engaging or developing social enterprise operators, local Arts, hospitality and maintenance organizations, to ensure wider social inclusion benefits and net gains.

Components:
A - Gateway Plaza
A significant new gateway public realm could provide a day a night animation with an interactive water mist and light projection fountain.

B - Visitor Centre
The new park's inclusive social character and activation will be supported by a visitor center/ cafe proposed as a part of the ILLUME Artwork new green topology.

C - Landscape / Ecology
The park will seek to deliver biodiversity and wide environmental net gain through the calculation of an ecological baseline at the outset which will be tested prior to and during design development. This will seek to deliver a set of native habitats supporting indigenous flora and fauna. Planting techniques will incorporate biochar to increase carbon sequestration across the site. Proposals could also develop a natural capital account to measure delivery of ecosystem services and wider social and environmental benefit.

The landscape of the Green Arc will develop an interplay of three gradients:

Ecology - from the river valley and dense woodland to meadow and high chaparral - reflecting the historical habitat types of the Santa Clara Valley.

Hydrology - a dynamic seasonal system that leads from the wet valley to dry mountain

Topography - a valley surrounded by mountains that has a direct influence on the interplay of habitat and water

ILLUME Components

01 Digital Arc
Fibonacci spiral geometry reflective in the day, during darkness an immersive media ribbon of light. The digital display will be fully re-programmable.

02 Green Arc
Garden in the sky.
Interplay of Ecology, Hydrology and topography

03 Viewing platform
With unparalleled panoramic views of the city and the surrounding mountains. Located at the highest point of the Digital Arc at 164feet, accessible by elevator and stairs.

04 Visitor Centre
Merging with Green ribbon with an accessible green roof landscape.
New Focus for site activation.

05 Digital Portals
Convergence of culture and technology

Digital Arc

Rises as a ribbon to a publicly accessible viewing platform of unparalleled panoramic views of the city and the surrounding mountains. While shimmering in the day, the Digital Arc will, during darkness, transform into an immersive media ribbon.

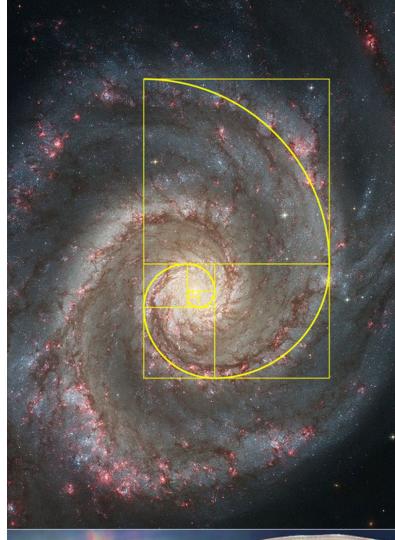
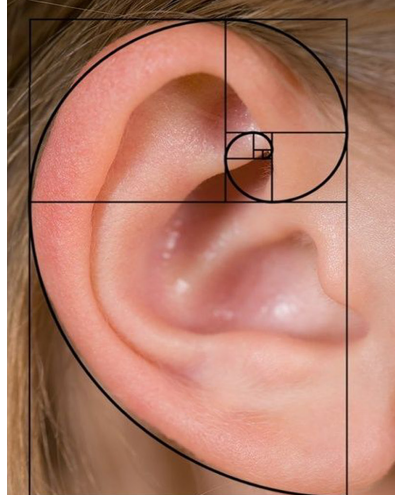
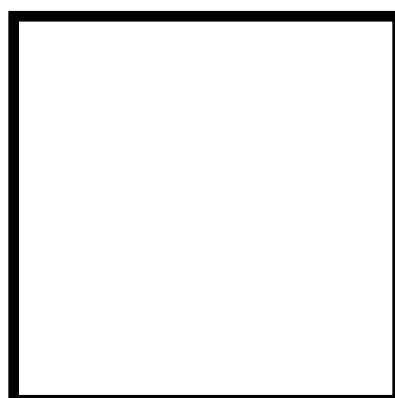
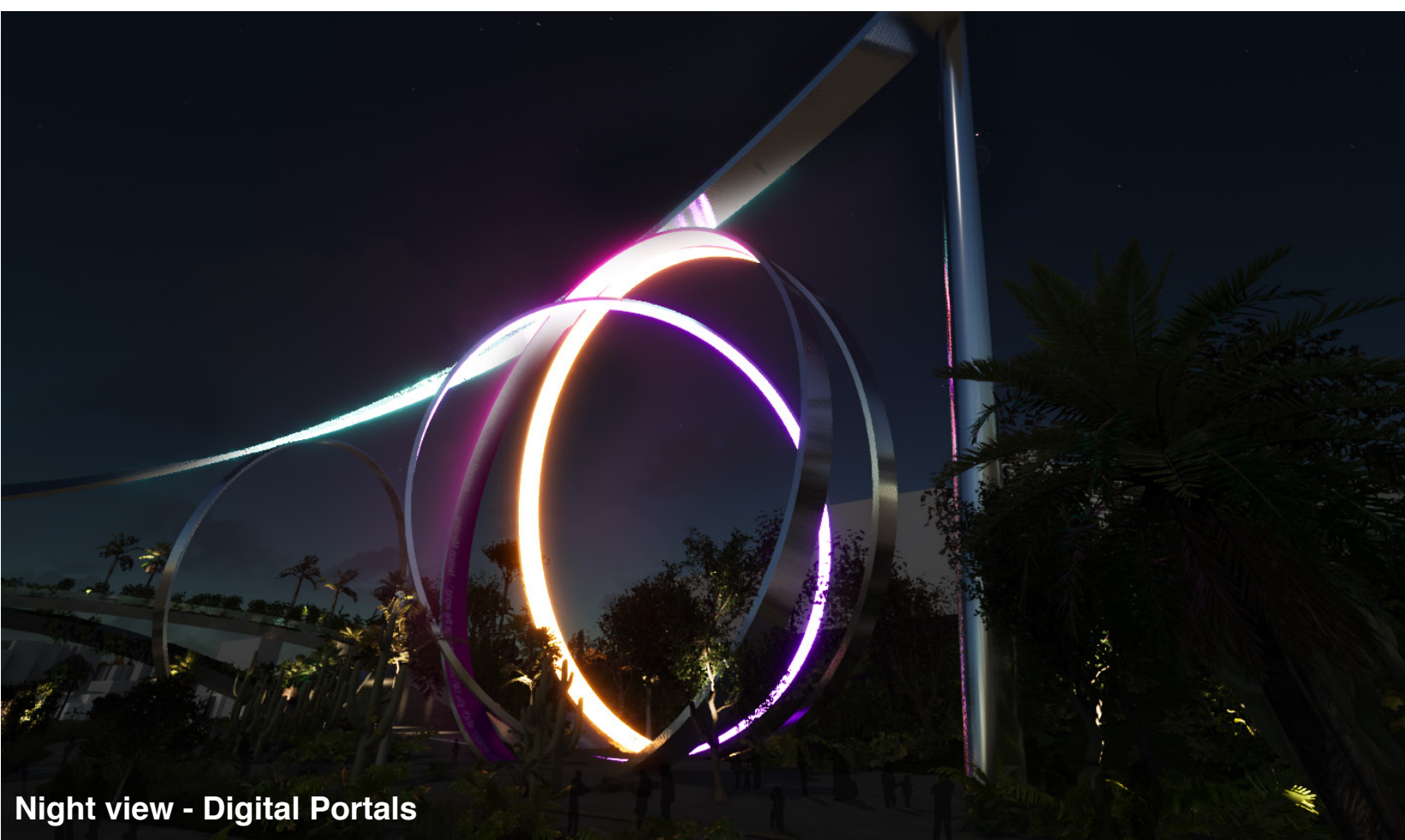
Green Arc

In contrast, the lower ribbon as a native habitat garden in the sky dramatically bridges the site as a metaphor for the need to respect and protect the ecological foundation of our planet's capacity to support life. As a "catwalk Highline" destination space it will attract people with its framed southern viewpoint towards Loma Prieta and the Confluence.

Digital portals

Will transform ILLUME into a link across different cultures as scrolling quotes from literature, art, poetry, philosophy, religion, science. Chosen by Artificial Intelligence this library without walls will be a response to real-time data analysis of the social media language patterns across Silicon Valley - societal sense of well-being, emotional experiences, and life satisfaction.

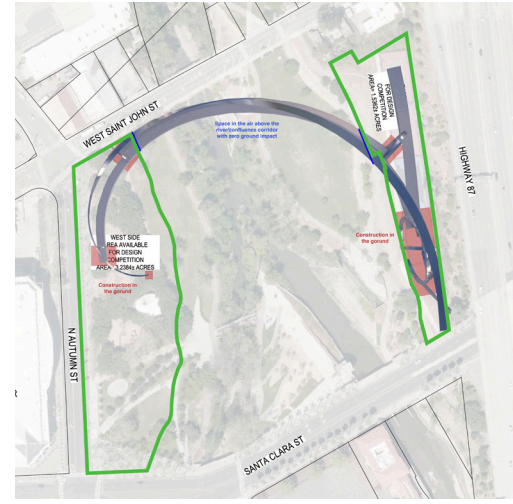
The Digital portals as instant moment of convergence will bring into the public domain inexhaustible connections across different cultures from the past to the very present.



Artist's Impression

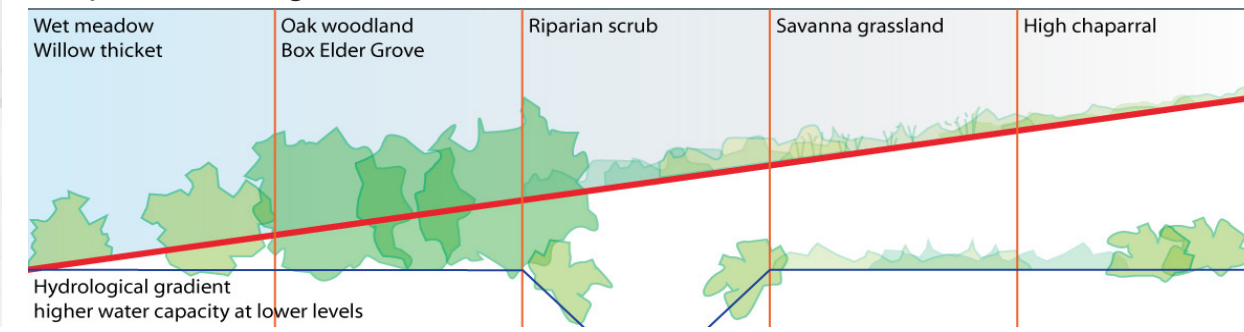
ILLUME

The best way to predict the future is for humankind to invent it.



Landscape principles

The new 21st-century river park would explore native habitats, a dynamic riparian corridor, wet meadows and willow thickets, oak savanna to high chaparral, changes with the season, and fluctuations with the climate.



Net Zero Energy Design

The ILLUME landmark will be energy neutral using renewable sources. The photovoltaics panels will be fully aesthetically integrated with ILLUME, proving that solar can be beautiful.

The design development of ILLUME will be based on: Sustainable low water use, rainwater harvesting and recycling measures. Use of materials that are non-toxic, sustainable, minimizing embodied energy. Environmental and ethical sourcing of materials, sustainable construction practices including.

Lighting

Whist impactful psychologically the detailed lighting design will be based on: Eliminating Light pollution of the night sky, avoiding upward pointing light sources. Preventing disruption to natural behavior of native and migratory aquatic animals and birds. Programmatic response to migration seasons. Shielding the riparian corridor and natural habitats from emitted light avoiding undesirable UV Light wavelength and static glare patterns.

Day time Visual impact

The surface reflectivity of the Digital Arc will vary to avoid reflecting sun light into the sky and thus impacting birds and aircraft. The mirror reflectivity will be only used only on surfaces parallel to and facing the ground.

ILLUME Engineering

The lower Green Arc ribbon is supported by a steel arch spanning across the river with foundations in the permissible zones. A series of struts connect the arch with varying lengths due to the curvature of the Green arc deck. These struts distribute the forces from the deck, at regular spacings, to the arch, subjecting it to compression and resulting in horizontal forces at the foundations.

The upper Digital Arc ribbon is supported by the steel rings at discrete points along its length. The structure from several chord members forms a stiff truss to minimize deflections. The construction of all the required ring foundations will be within the specified permissible site boundaries.

Digital Portals



Point of Origin



View from the Confluence



Night view

