

Ascension Tower

a symbol of merging of the Silicon Valley and the city of San Jose, as well as a symbol of the World scientific and technological progress of the Silicon Valley ascended to heavens.



Ascension Tower

a symbol of merging of the Silicon Valley and the city of San Jose, as well as a symbol of the World scientific and technological progress of the Silicon Valley ascended to heavens.

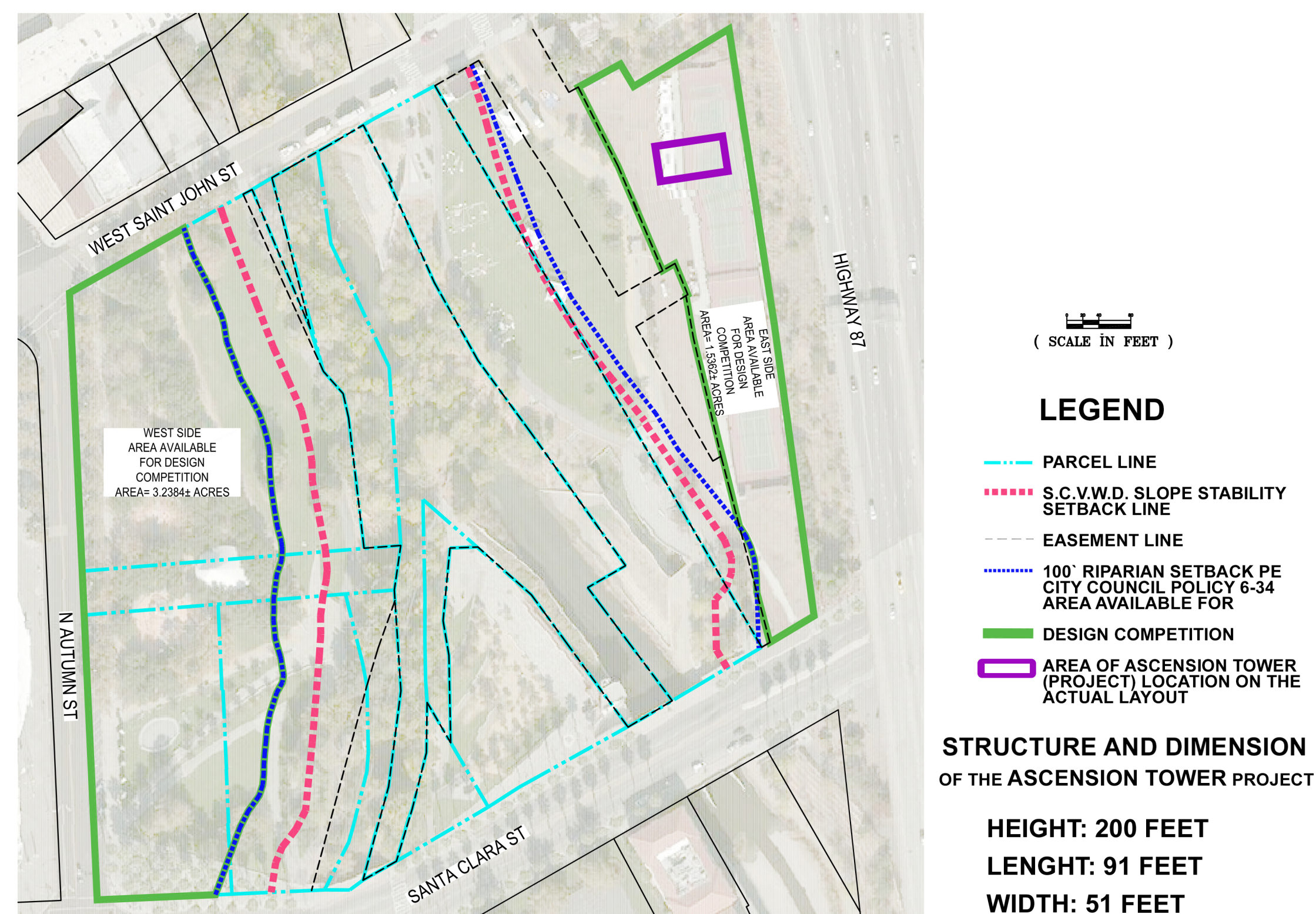
I suggest to build a two-domed Ascension Tower with a total height of 200 feet. The Ascension Tower is meant to be a two-domed tower, which architectural appearance reflects biblical scenes: the birth of Jesus Christ, i.e. the beginning of the Common Era AD, the thirty-three-year earthly path of Jesus Christ, the Resurrection and the Ascension. The Ascension Tower is presented as a complex, in the plan of which there are two blocks at the top, connected together (horizontal dimensions of blocks 40x40 and 33x33 feet), with a height of 120.5 feet, separated by vertical marking into 33 parts of 3.65 feet (this marking into 33 parts is meant to reflect the earthly path of Jesus Christ), oriented eastward and located on a rectangular basement block with a height of 9 feet and horizontal dimensions of 91x51 feet. In the basement block there is an entrance, and above these connected blocks, further stepwise there are the block of the Nativity of Christ, the block of the Resurrection, and the block of the Ascension (each of them is highlighted with a red line) with a height of 4 feet each. The top of the Ascension Tower is made as connected domed blocks with domes: eastern (40x40 feet, 40 feet high with luminarium) and western (33x33 feet, 33 feet high). Two twelve-segment domes of the Ascension Tower symbolize heavenly and, consequently, earthly time. The coloring, the cross pattern, the location and connection of both domes by a double cross symbolizes the unity of earthly and heavenly times. It is suggested to install an anchored cross with a height of 17.5 feet, symbolizing both the starting point of time and the infinity of time, on each dome. The total height of the suggested two-domed Ascension Tower, taking into account the height of the anchored crosses, is 200 feet (182.5 feet - the height of the Ascension Tower itself, + 17.5 feet - the height of the eastern anchored cross).

Ascension Tower

a symbol of merging of the Silicon Valley and the city of San Jose, as well as a symbol of the World scientific and technological progress of the Silicon Valley ascended to heavens.



Area of Ascension Tower (project) LOCATION ON THE ACTUAL LAYOUT



Ascension Tower

a symbol of merging of the Silicon Valley and the city of San Jose, as well as a symbol of the World scientific and technological progress of the Silicon Valley ascended to heavens.



Ascension Tower

a symbol of merging of the Silicon Valley and the city of San Jose, as well as a symbol of the World scientific and technological progress of the Silicon Valley ascended to heavens.

I suggest to build a two-domed Ascension Tower with a total height of 200 feet.

The Ascension Tower is meant to be a two-domed tower, which architectural appearance reflects biblical scenes: the birth of Jesus Christ, i.e. the beginning of the Common Era AD, the thirty-three-year earthly path of Jesus Christ, the Resurrection and the Ascension.

The Ascension Tower is presented as a complex, in the plan of which there are two blocks at the top, connected together (horizontal dimensions of blocks 40x40 and 33x33 feet), with a height of 120.5 feet, separated by vertical marking into 33 parts of 3.65 feet (this marking into 33 parts is meant to reflect the earthly path of Jesus Christ), oriented eastward and located on a rectangular basement block with a height of 9 feet and horizontal dimensions of 91x51 feet.

In the basement block there is an entrance, and above these connected blocks, further stepwise there are the block of the Nativity of Christ, the block of the Resurrection, and the block of the Ascension (each of them is highlighted with a red line) with a height of 4 feet each.

The top of the Ascension Tower is made as connected domed blocks with domes: eastern (40x40 feet, 40 feet high with luminarium) and western (33x33 feet, 33 feet high).

Two twelve-segment domes of the Ascension Tower symbolize heavenly and, consequently, earthly time.

The coloring, the cross pattern, the location and connection of both domes by a double cross symbolizes the unity of earthly and heavenly times.

It is suggested to install an anchored cross with a height of 17.5 feet, symbolizing both the starting point of time and the infinity of time, on each dome.

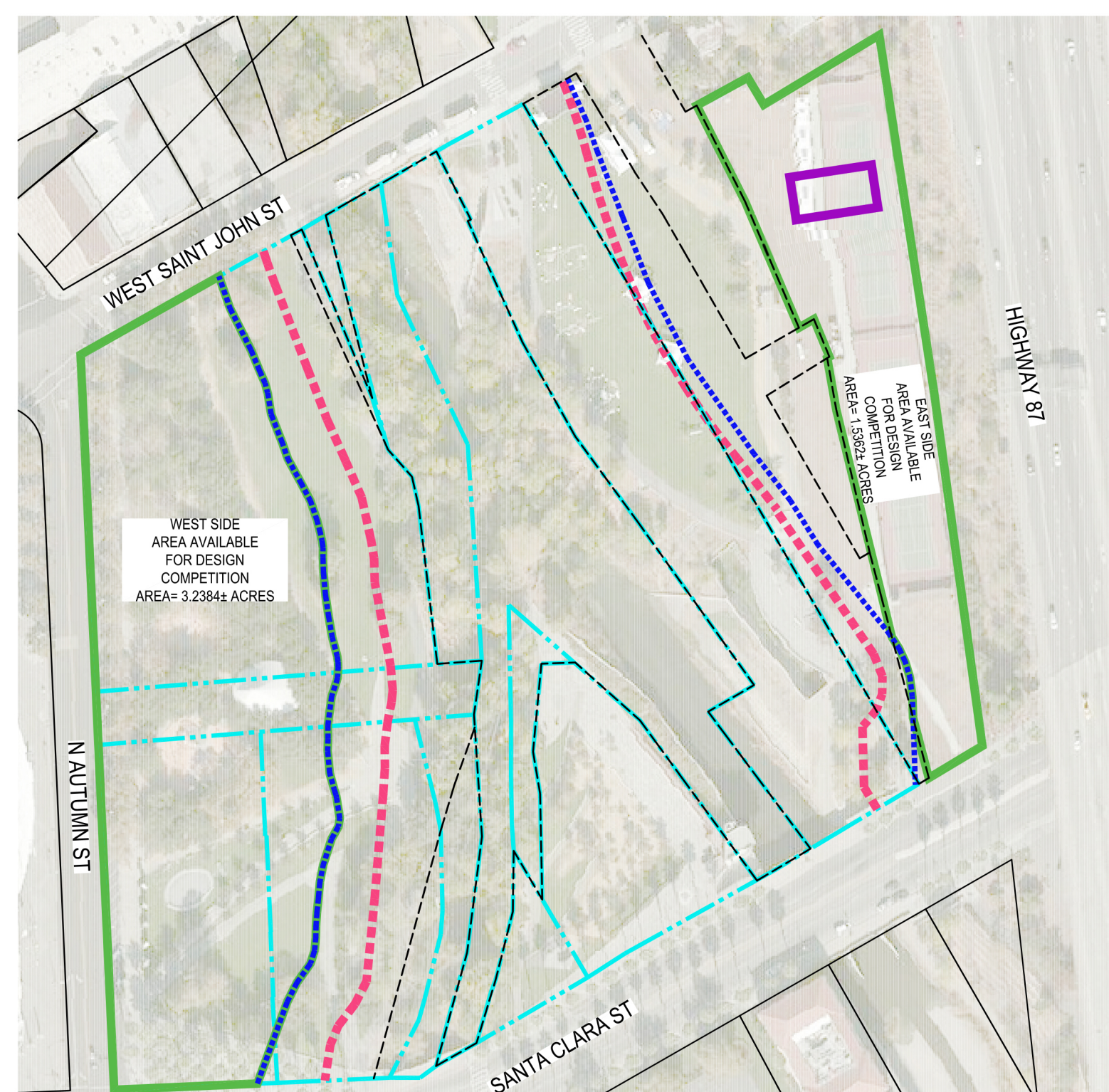
The total height of the suggested two-domed Ascension Tower, taking into account the height of the anchored crosses, is 200 feet (182.5 feet - the height of the Ascension Tower itself, + 17.5 feet - the height of the eastern anchored cross).

Ascension Tower

a symbol of merging of the Silicon Valley and the city of San Jose, as well as a symbol of the World scientific and technological progress of the Silicon Valley ascended to heavens.



Area of Ascension Tower (project) LOCATION ON THE ACTUAL LAYOUT



(SCALE IN FEET)

LEGEND

- PARCEL LINE
- S.C.V.W.D. SLOPE STABILITY SETBACK LINE
- EASEMENT LINE
- 100' RIPARIAN SETBACK PE CITY COUNCIL POLICY 6-34 AREA AVAILABLE FOR
- DESIGN COMPETITION
- AREA OF ASCENSION TOWER (PROJECT) LOCATION ON THE ACTUAL LAYOUT

STRUCTURE AND DIMENSION OF THE ASCENSION TOWER PROJECT

HEIGHT: 200 FEET
LENGTH: 91 FEET
WIDTH: 51 FEET