

The entry to the Corridor begins at the palm grove on the southern end of the site. A wide limestone pathway begins at the palm grove and extends to the north ending at West Saint John St. This path defines the Corridor and populates the parkway with various site activities. Arriving at the structure, the visitor is met with a vine wall and permeations of flora along the entryway.

fig.1: Entering the park from the South

Conflux Corridor

Severed by the confluence of the Guadalupe River and Los Gatos Creek, the site is reinterpreted conceptually in the compositional narrative: a merging of two differentiating structural ribs together forming a single channel. The proposal embodies the soul of California by functioning as a key cultural destination that entangles nature with a public forum adapted to a technological age. Enveloping these elements, the structural exoskeleton follows a concentric curve conceived by the edge of the riparian setback. Landscape, culture, and various site activities converge into a seamless whole.



fig.1

fig.2: Site plan
fig.3: Second level plan at plinth

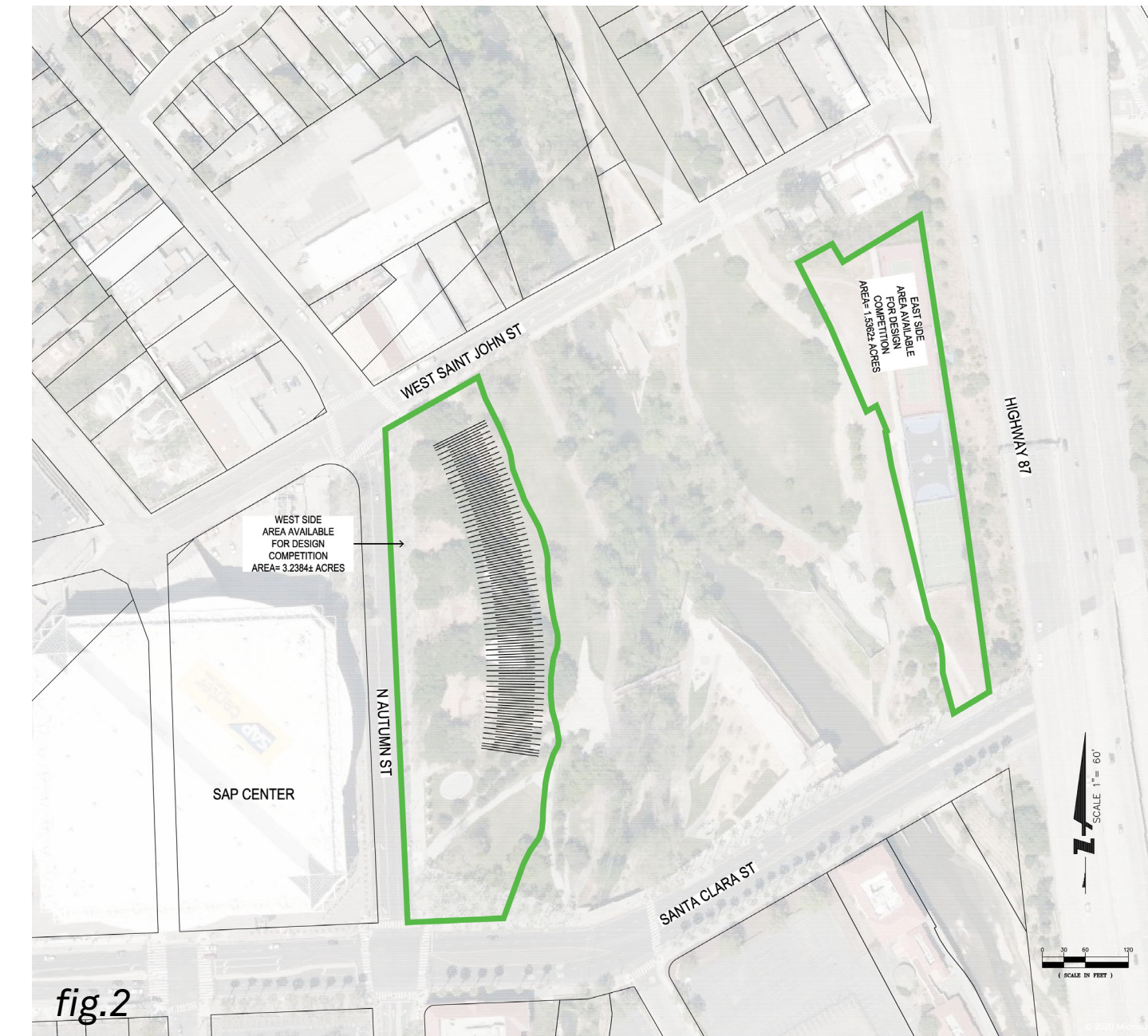


fig.2



fig.3

The outer load-bearing structure suspends two core elements: first, a plinth along a colonnaded passageway serving as a public utility and second, a viewing corridor above that brings a new cultural destination to the community.

At night, the structural exoskeleton glows. Illuminated from the interior, the structure reads as a beam of light across the length of the site.

fig.4: Exploded Axonometric Section
fig.5: Aerial render at night

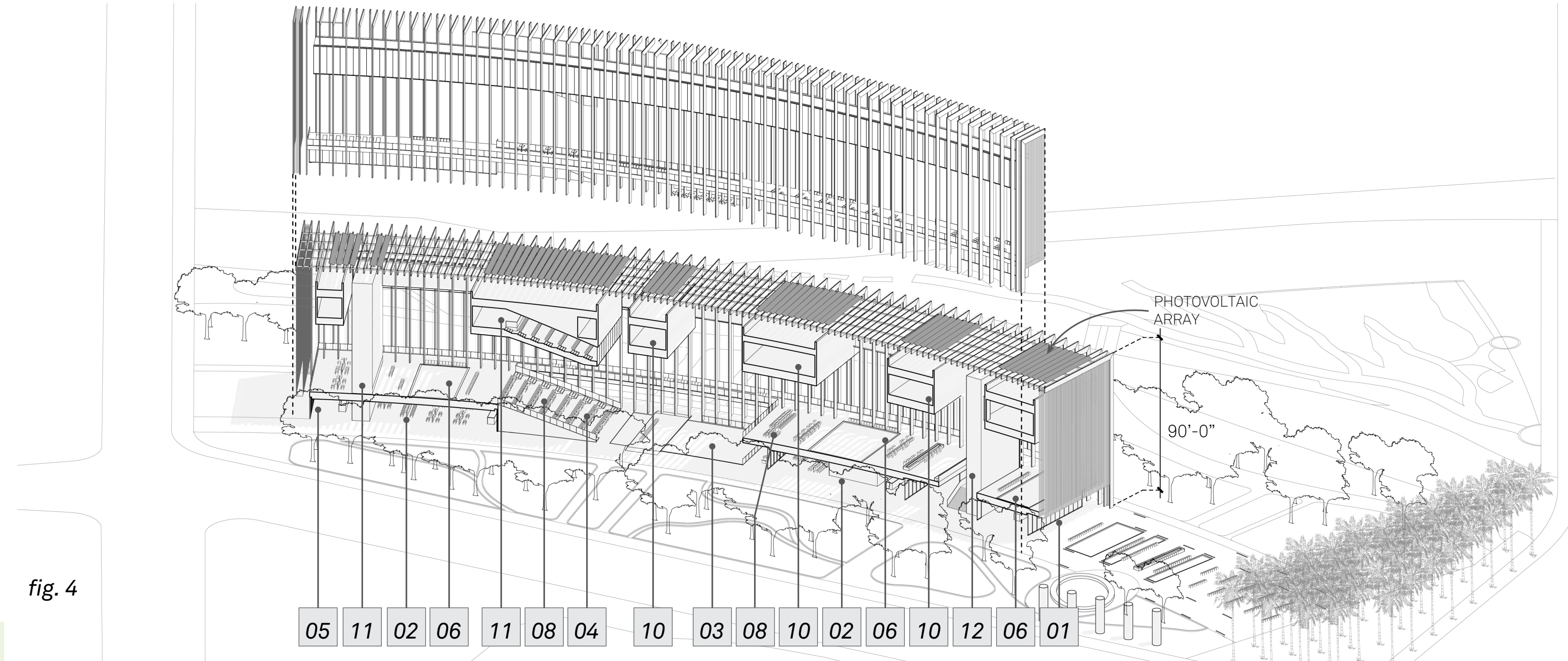


fig.4

PROGRAM KEY

01. Visitor's Center / Access to Galleries	05. Gift Shop / Exit from Galleries	10. Galleries
02. Restaurant / Cafe	06. Garden	11. Lecture Hall / Theater
03. Water Garden	07. Living Wall	12. Core / Egress
04. Tiered Seating	08. Work / Charge Areas	



fig.5

As visitors move closer to the Corridor's exterior, the structural facade dissolves to reveal a porous through-way towards the riverfront. Passing through the structure, the visitor is met with cafes, bars and restaurants that are located on the ground level. Flora is a prominent feature of the interior - blurring the distinction between inside and out. Rest areas, work areas, charge stations, and social gathering spaces populate the communal access-way - acting as a public utility powered by photovoltaic panels mounted to the structural canopy above. Light bounces off the white finished structural ribs and the polished aluminum galleries looming above. Filtered by the structure, the light creates a dynamic, ever-changing interior condition.

Fragmented gallery spaces are suspended above and provide all-encompassing views that pan the length of the site. Art and cultural exhibition spaces allow for rotating galleries that create viewing experiences that are not a 'one-stop-shop' but instead offer cultural versatility.

fig. 6: Render on plinth along East circulation path
 fig. 7: Render viewing seating and living wall beyond
 fig. 8: Render viewing water garden & restaurants
 fig. 9: Render on plinth facing North

fig. 10: Render in gallery corridor
 fig. 11: Render in gallery facing East
 fig. 12: Render from theater looking below



fig. 9

fig. 12