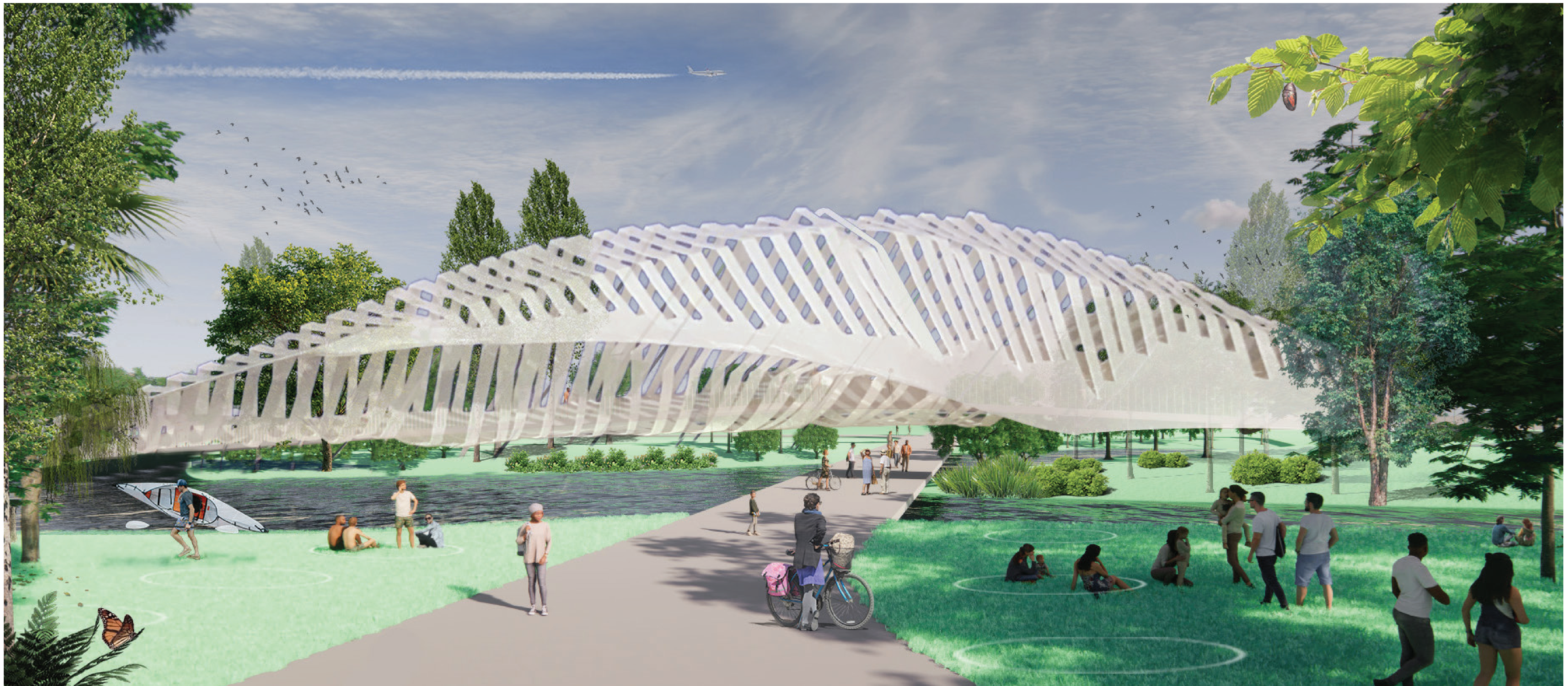


# CHRYSALIS

# CHRYSALIS

# CHRYSALIS

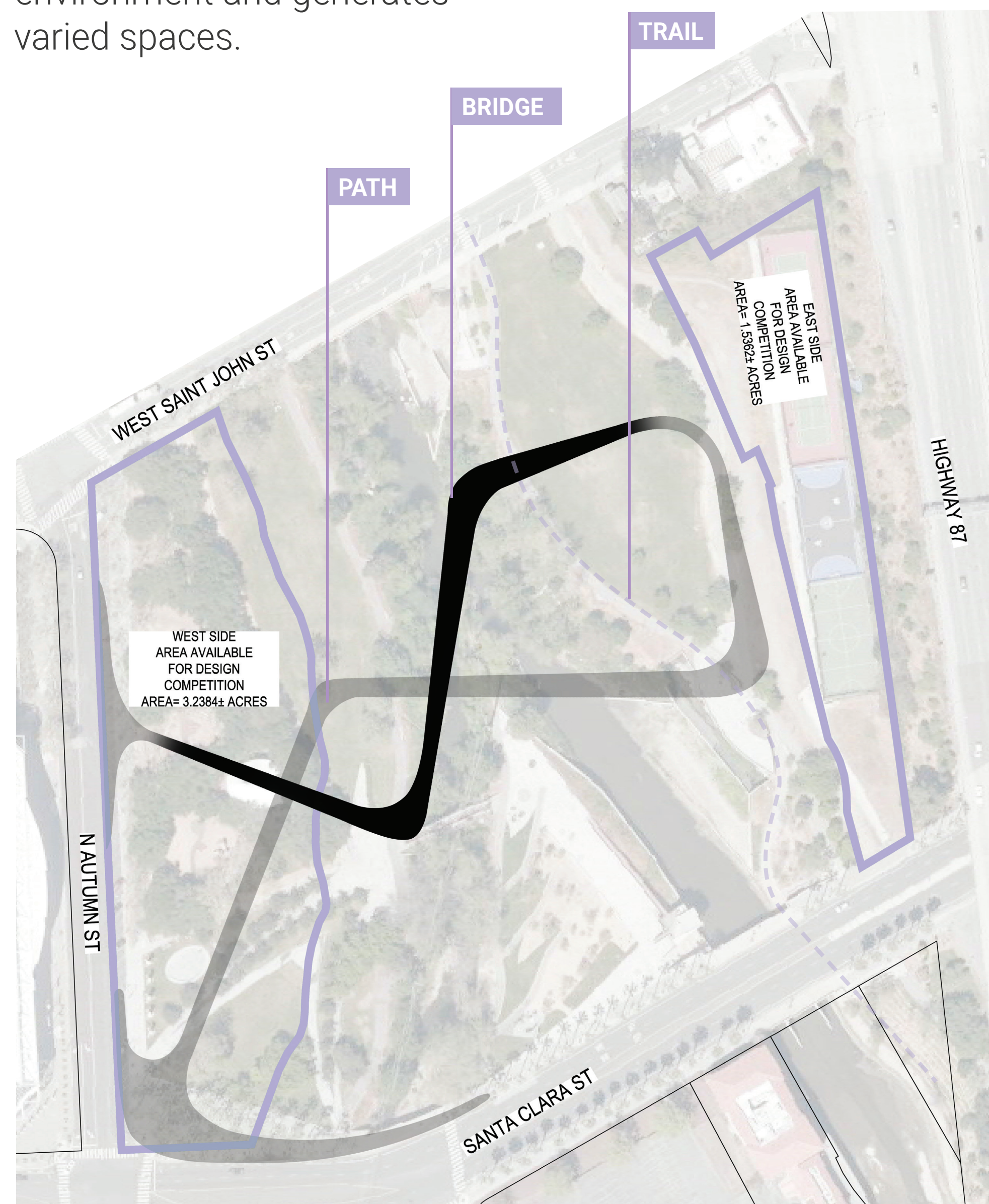
Project Chrysalis weaves humanity back into the land to honor our origin story. We can no longer afford to be disconnected. As we allow ourselves to separate from nature, we lose our identity as a part of the natural world and our understanding of what it means to be human. Guadalupe River Park offers us a chance to unravel and begin again. The looping pathway intersects with the land, like willow shoots wrapping around the edge of an Ohlone basket, forming a chrysalis at the point of confluence. The pathway offers moments to sit and reflect, walk mindfully, and enjoy some time outside. The louvers of the bridge form a binaural beat, creating an auditory illusion that describes the sound of nature and gives voice to the land and its past. As you cross the bridge, you become aware of your own connection to the silence. Project Chrysalis offers the confluence point a meditative space amid the growing San Jose community and a place of reflection to ground Silicon Valley's future.



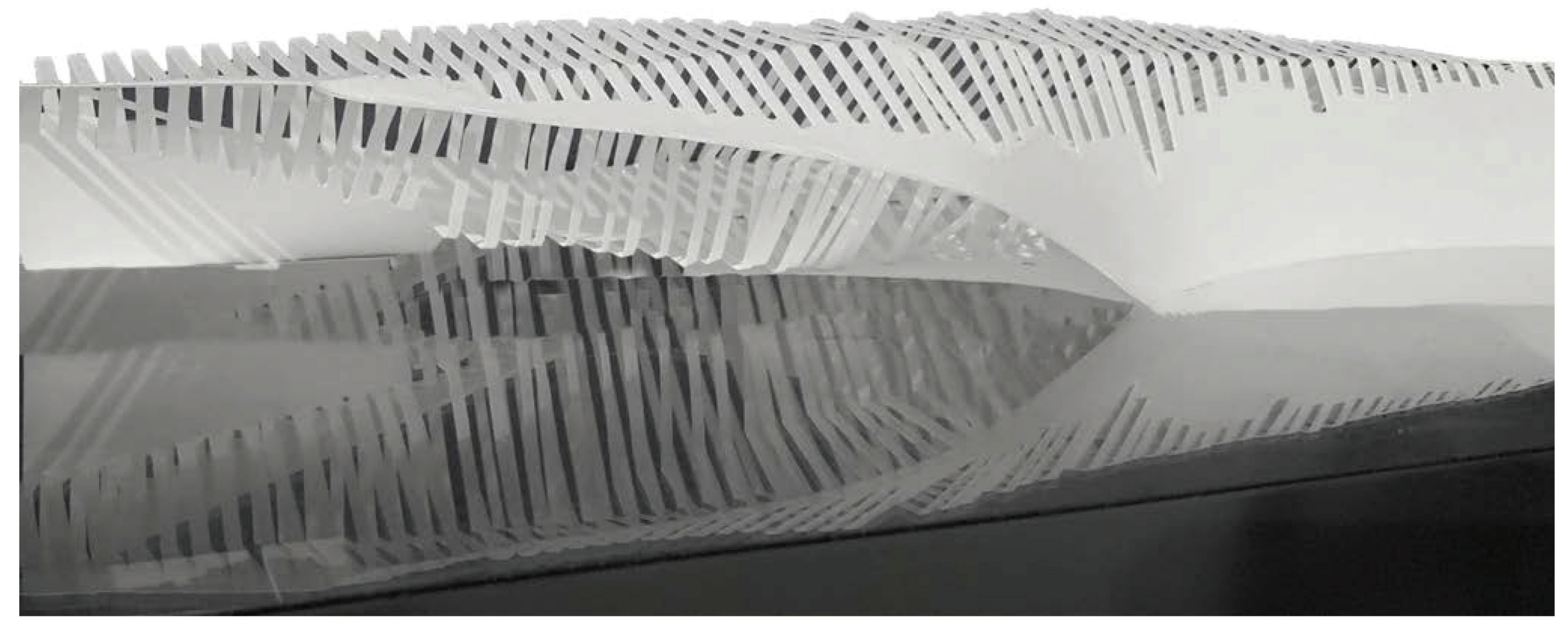
# CHRYSA LIS

## SITE PLAN

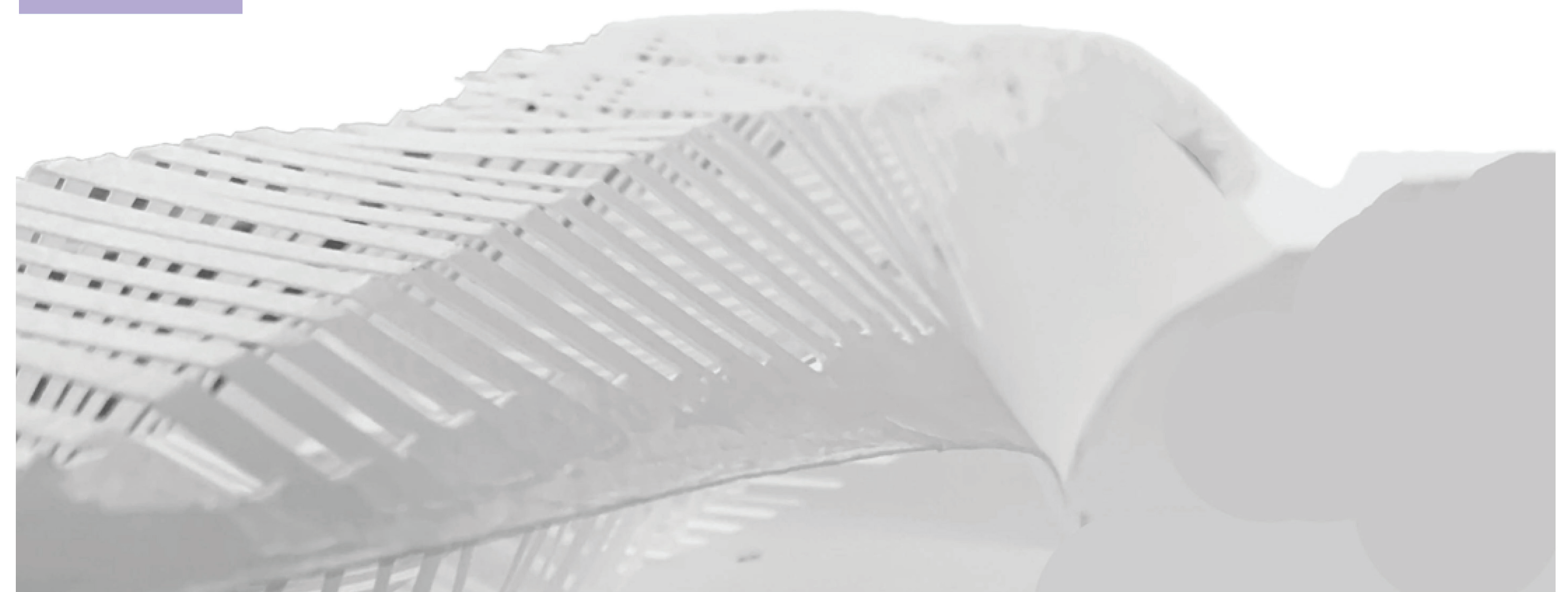
With a unifying gesture, Project Chrysalis creates three distinct conditions - bridge, path, and trail. Each offers a unique pace and opportunity for reflection. As the form bridges, it invites the user to pause at the moment of confluence of Guadalupe River and Los Gatos Creek. The design keeps the existing trail, inviting people to continue to enjoy the open meadows and soak in the full range of senses. The path guides the user through an **ICONIC** experience with the bridge louvers filtering both light and views, creating a cocooned reprieve. As a net-zero project, the louvers capture solar energy to illuminate the site at night in compliance with the lighting guidelines. Project Chrysalis transforms and morphs in response to its environment and generates varied spaces.



ELEVATION



EXTERNAL



INTERNAL

