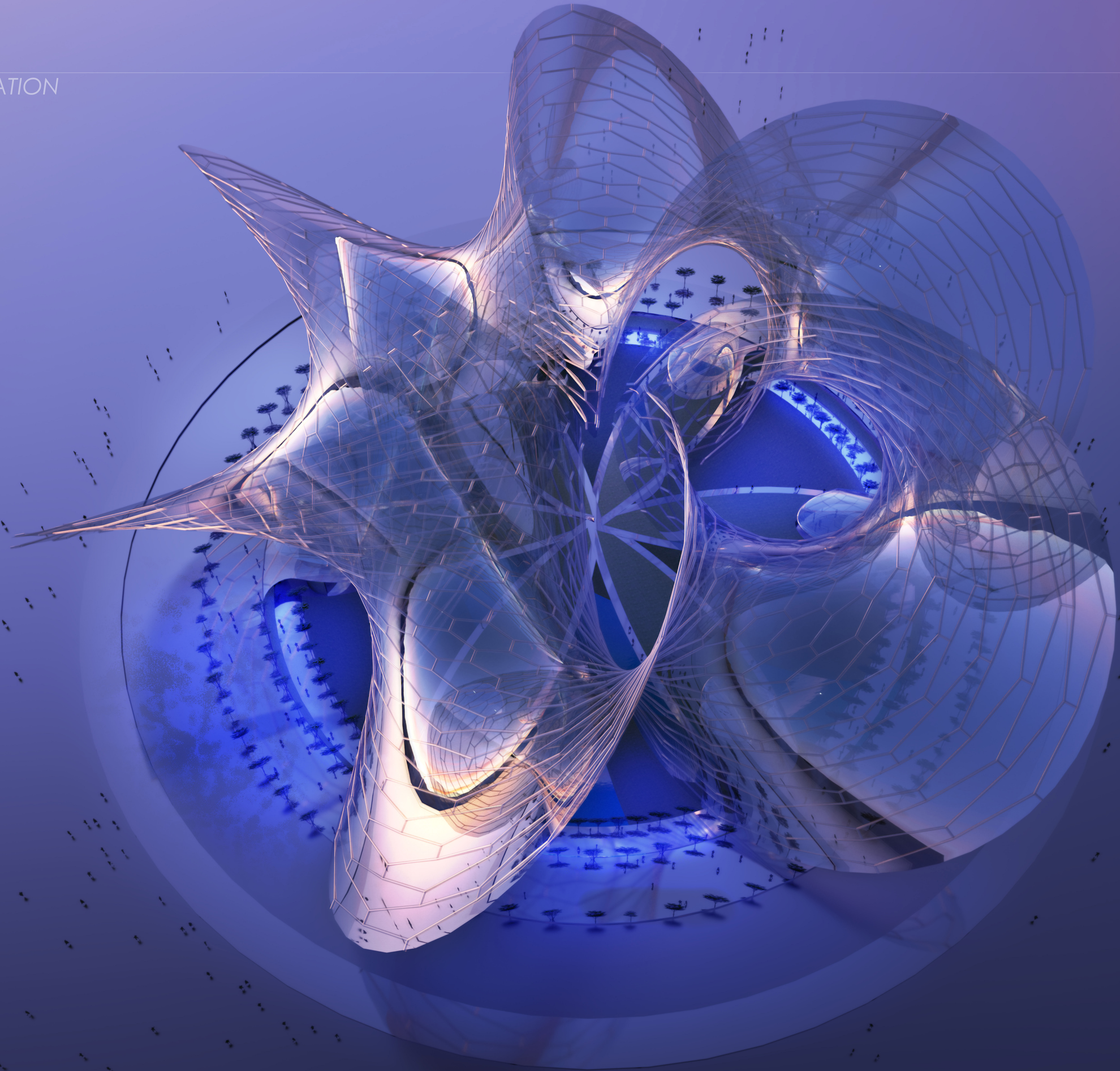
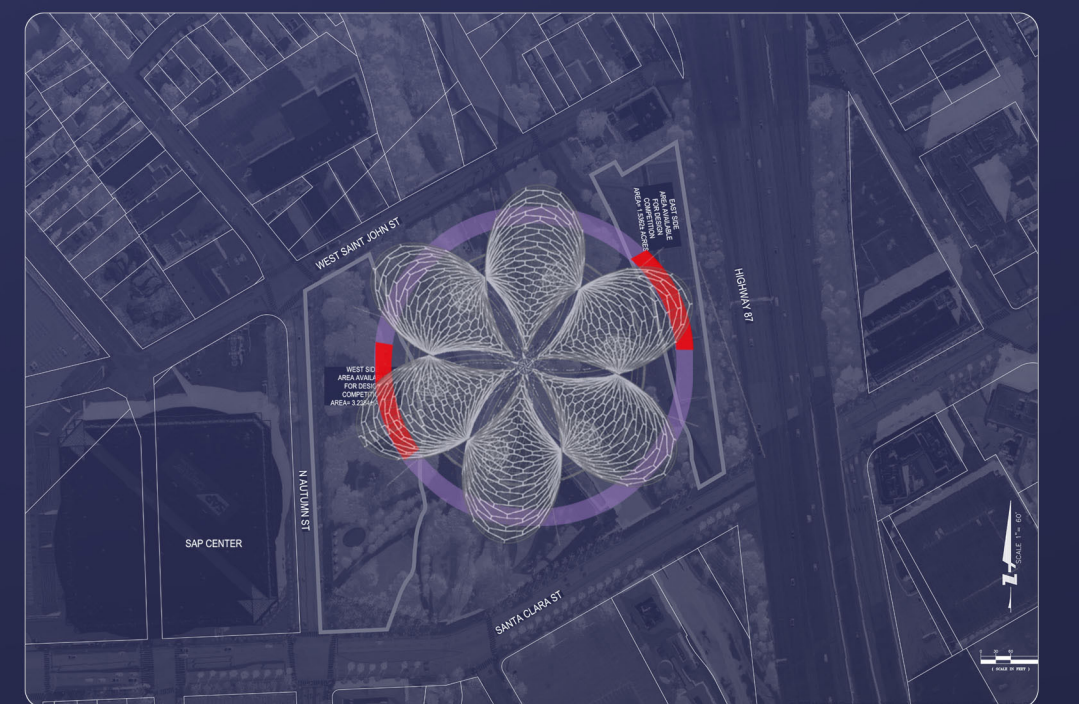


TYPE II

INNOVATIVE CIVILIZATION



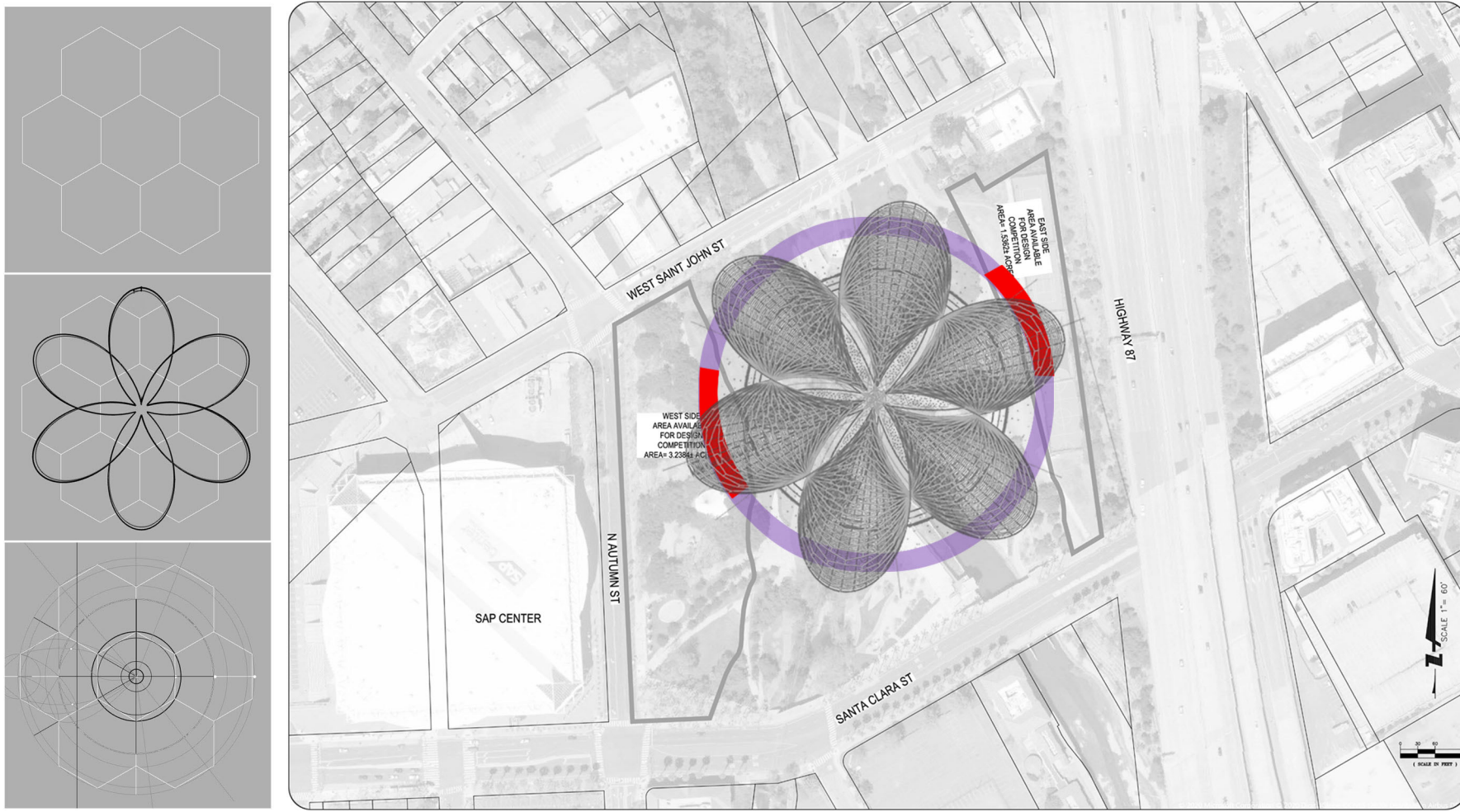
SITE



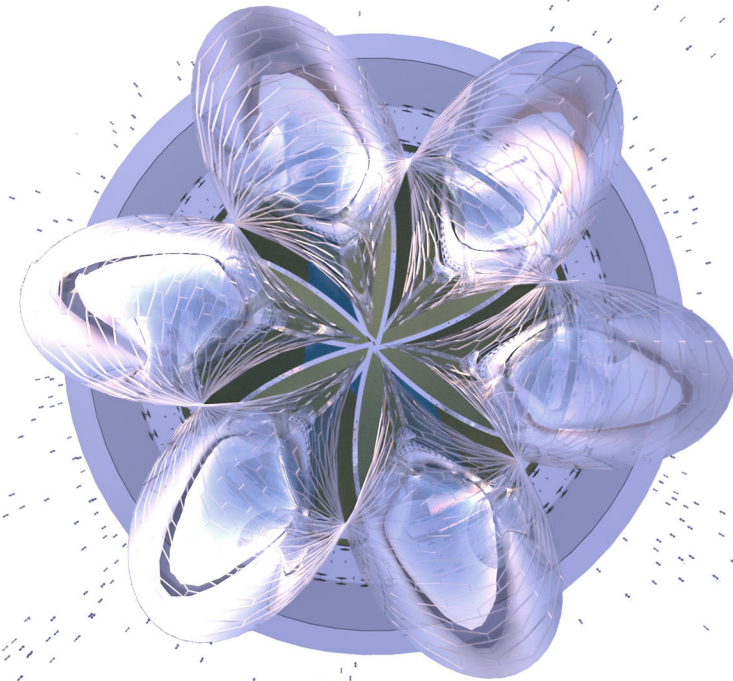
TYPE II

INNOVATIVE CIVILIZATION

HEXAGON CELLS - GEOMETRY CONSTRUCTION



- SUBSTRUCTURE - FOUNDATION
- BRIDGING SUPERSTRUCTURE (ABOVE GROUND)



SELF-CONTAINED SUPERSTRUCTURE
(ZERO DEGREE OF FREEDOM -
EARTHQUAKE RESISTANT)

NET ZERO STRATEGY

GLOWING ICON

Architectural self-contained superstructure that automatically charges during daytime and glows at nighttime to create an iconic experience. A true landmark that will act as a constant reminder that the future of civilization is in our hands.

BIOTECH LIVING STRUCTURE

Lighting patterns will form via microorganisms embedded into the structure's membrane, making it glow upon immediate reaction to natural forces such as wind velocity and rainfall.

100% SMOG-FREE INTERNAL PLAZA

Implementation of developed technology to intake external air, clean it, and output it into the structure's epicenter, allowing visitors to experience breathing the purest air in the world.

AI SENSORY SKIN

Project is located over San Jose International Airport's flight path. Sensors will be positioned all around the structure to reduce/increase intensity of lighting when aircraft pass through the space to take-off or land, harmonizing the structure's luminance in a spectacular visual display of artificial intelligence blending with the project's technology.

INTERACTIVE ORBITAL PATHS

Activate the structure's orbital paths by impacting the surface with every running step—resulting in generation of electricity that can be used for wireless charging of future technologies, making Type II the largest public device to provide free power to visitors. Creates awareness of the importance of constant interaction between humanity and modern technology.

