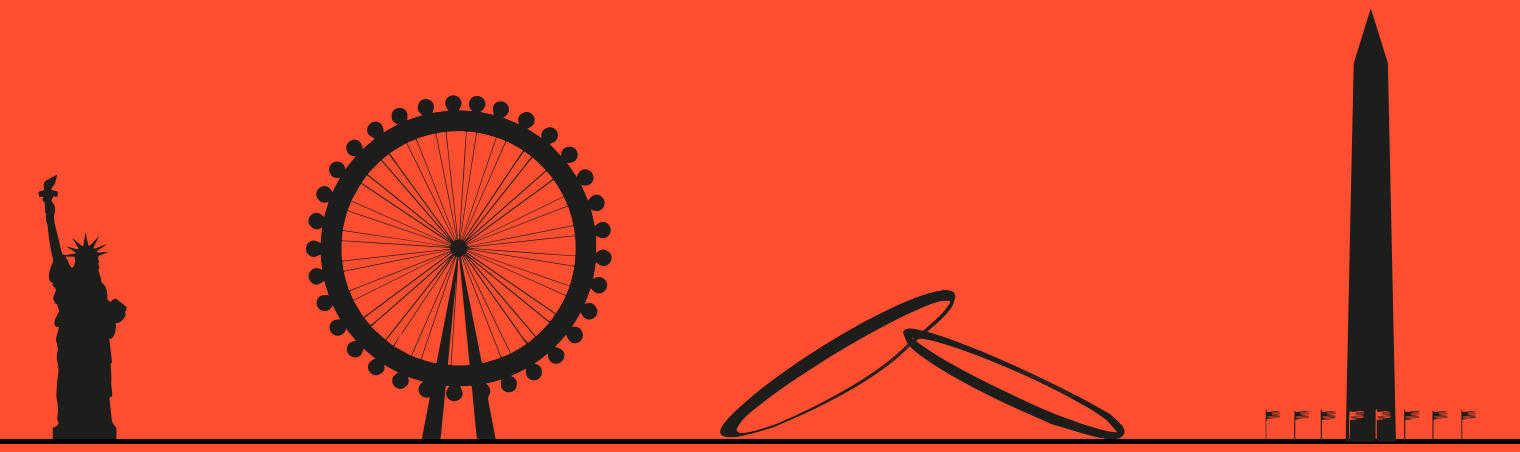


# AEONS

IS A GREEK WORD MEANING INDEFINITE AND VERY LONG PERIOD OF TIME, A POWER EXISTING FROM ETERNITY



## CONCEPT

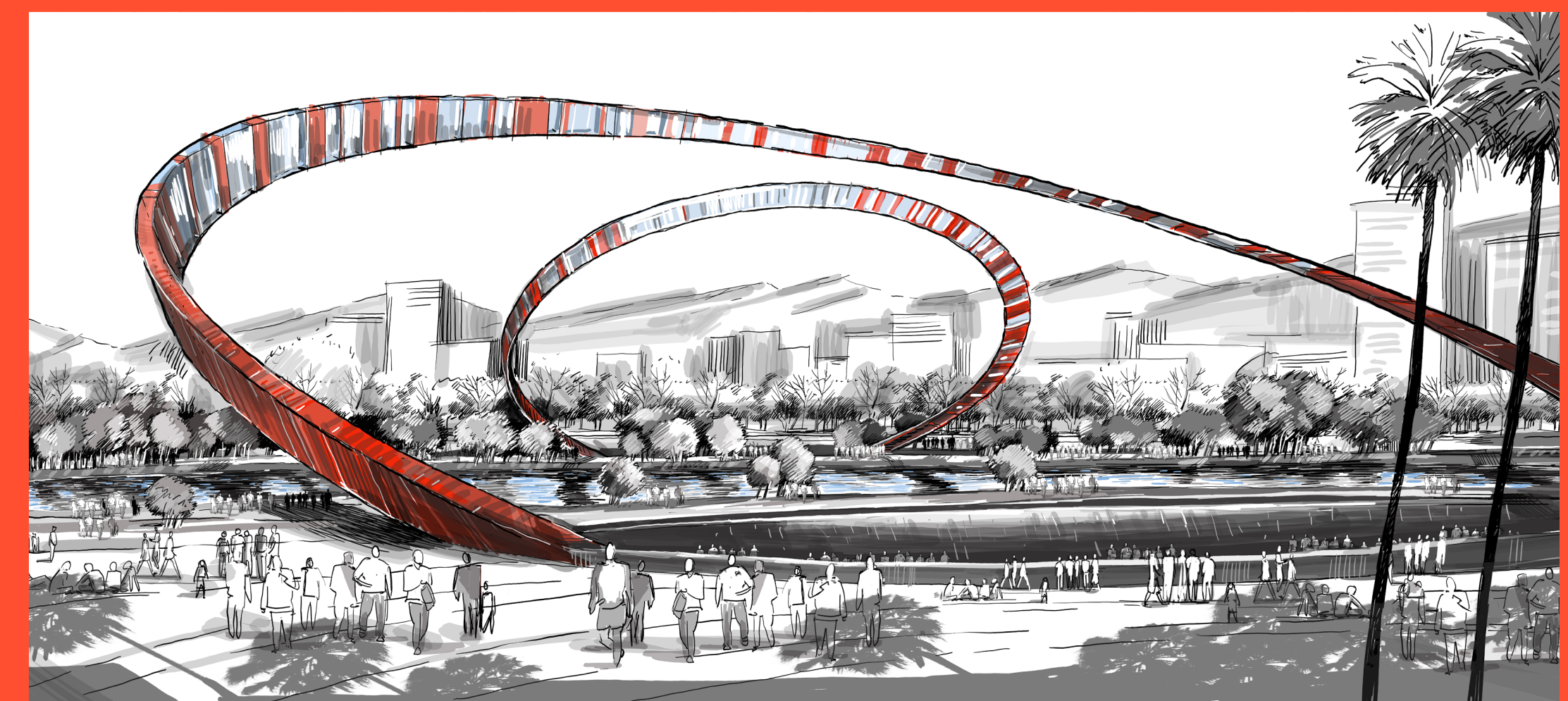
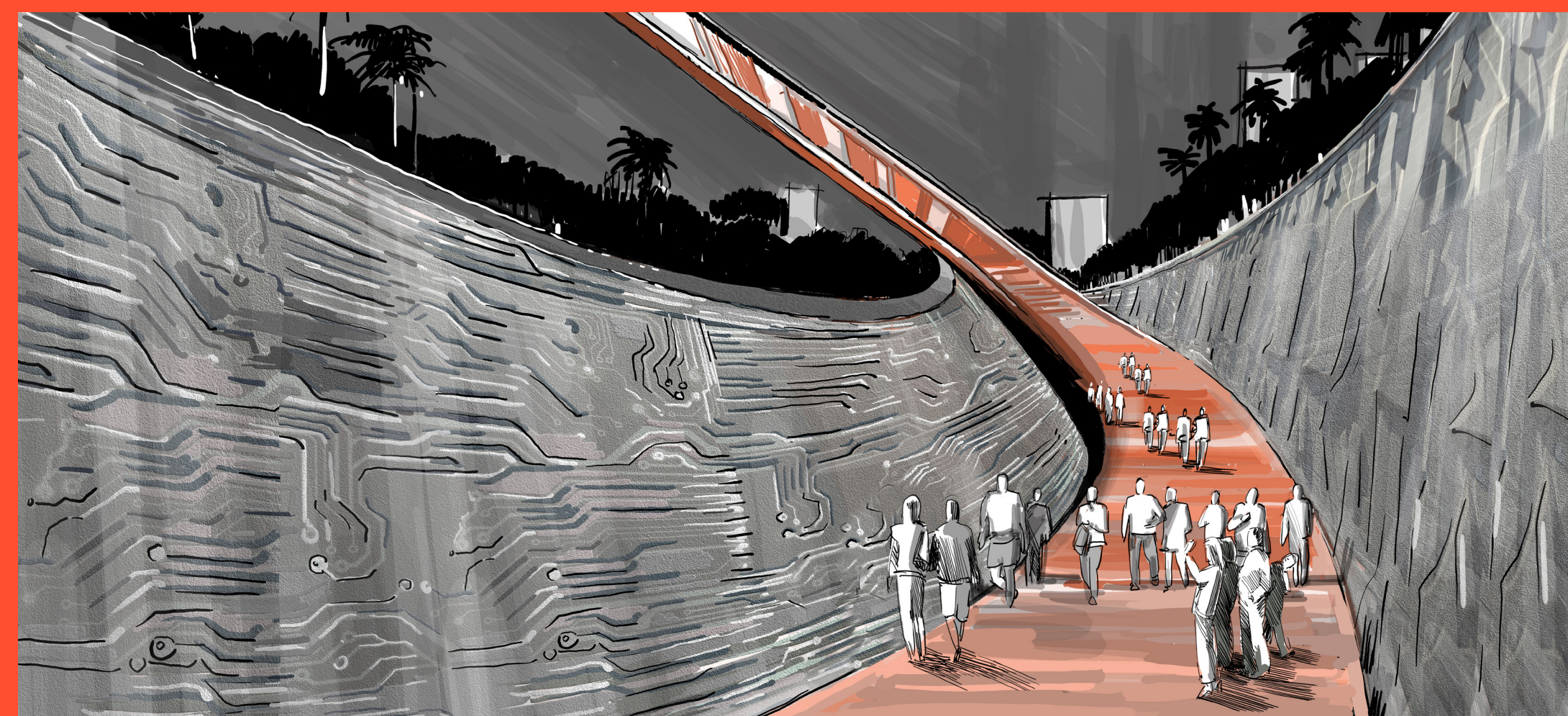
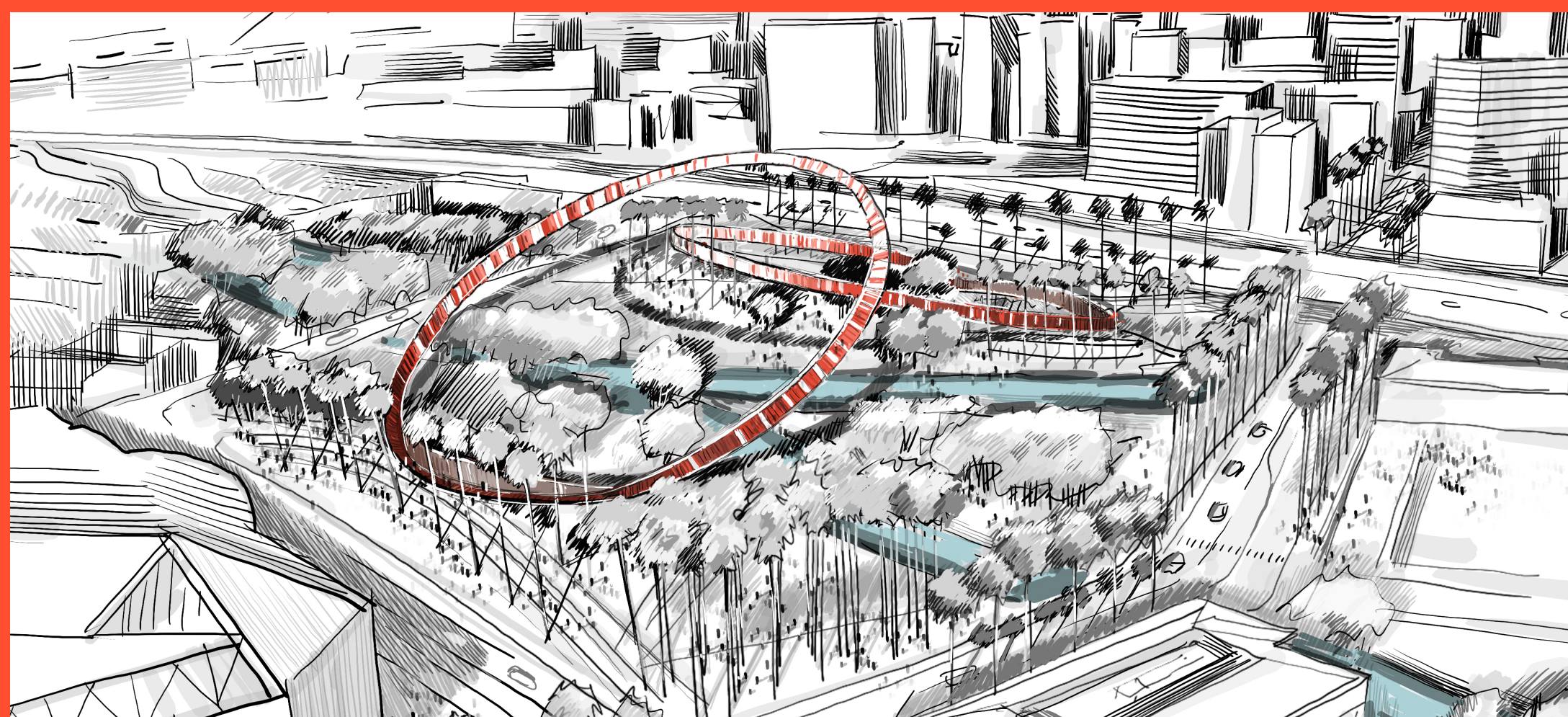
AEONS represent the timeless, infinite progression of ingenuity and innovation. They stand for humanity and technology and conceptualize that ideas are not born in isolation, but through a dialogue of cumulative knowledge over time which provokes invention. The materiality from sandstone to silicon is a metaphor of time, progress and achievement in Silicon Valley. It is an uplifting perspective that celebrates the confluence of ideas.

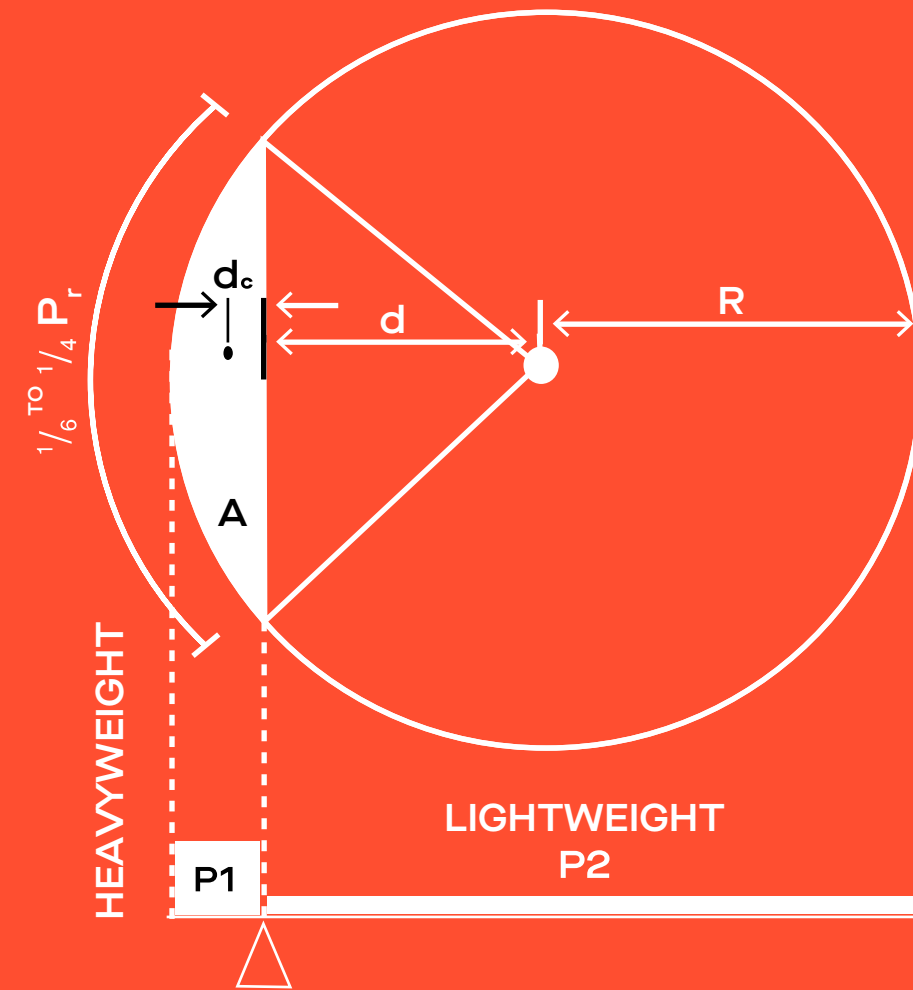
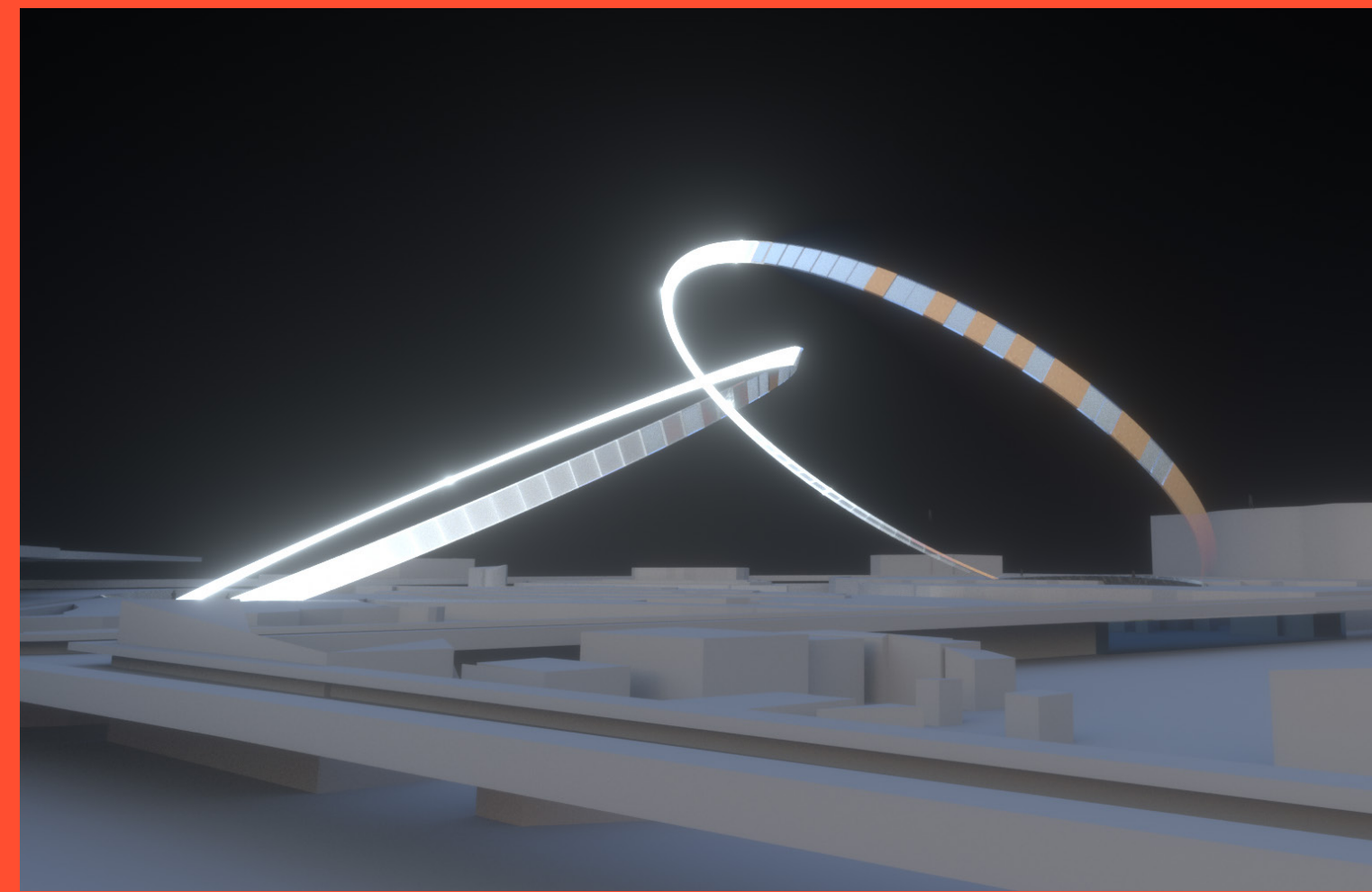
## LANDMARK

The distinctive dual silhouette, with its warm hues by day and lit surfaces by night, will become an emblem of the city for freeway users and air passengers and a source of affection for the community. It will also create dynamic backdrop for media broadcasts.

## DESTINATION

AEONS generates a localized microclimate, cooling visitors through atomized mist which naturally removes heat from the air. The minimal footprint enhances the useable recreational area, whilst a curated journey through the ellipse reveals a timeline of Silicon Valley's global contributions. Public access in conjunction with geological report and the timeline's content will develop collaboratively with the local community and innovative AI construction techniques.





$R = 147.6 \text{ ft}$   
 $A = 6221.54 \text{ ft}^2$   
 $d = 107.6 \text{ ft}$   
 $d_c = 17.4 \text{ ft}$   
 $P = 928.5 \text{ ft}$

$P1 = 626.6 \times 6221.54 \times 17.4$   
 $= 67,828 \text{ kip ft}$

$P2 = 548.2 \times (5/6 \times 928.5) \times ((147.6 + 107.6)/2)$   
 $= 64,946 \text{ kip ft}$   
 $= P1 > P2$

### LIGHTING

By day the sculpture creates intrigue through intricate, natural shadow-play across the park. By night it is an exploration of transcendence and confluence through the projection of light onto solid sandstone and internal illumination of glass, moving in harmony with the confluence of the river and creating lit shadows on the park and water surface. The cloud mist technology will enhance events as a canvas for light installations.

### NET-ZERO

Within AEONS' structure, integrated photovoltaic systems will enable battery trickle charging, to support low power LED lights. To reduce installation time and impact to local wildlife, the majority of the structure will be prefabricated. To further reduce carbon footprint, we will specify local recycled and reclaimed materials wherever possible.

### ENGINEERING

The structural design counterbalances the heavyweight foundations, entrenched in the landscape, with the cantilevering rings. By post-tensioning the ring to improve bending resistance, optimising weight distribution and employing latest carbon fibre technologies. Seismic risk is addressed as are limiting materials and embodied carbon. Public access to the timeline will be defined in conjunction with geological reports.

