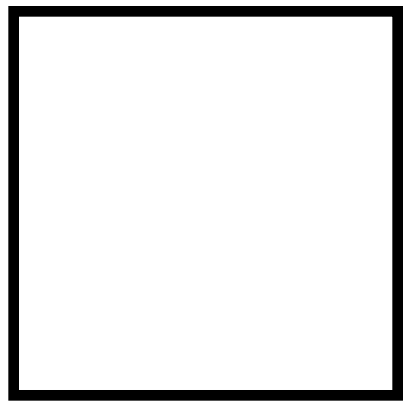
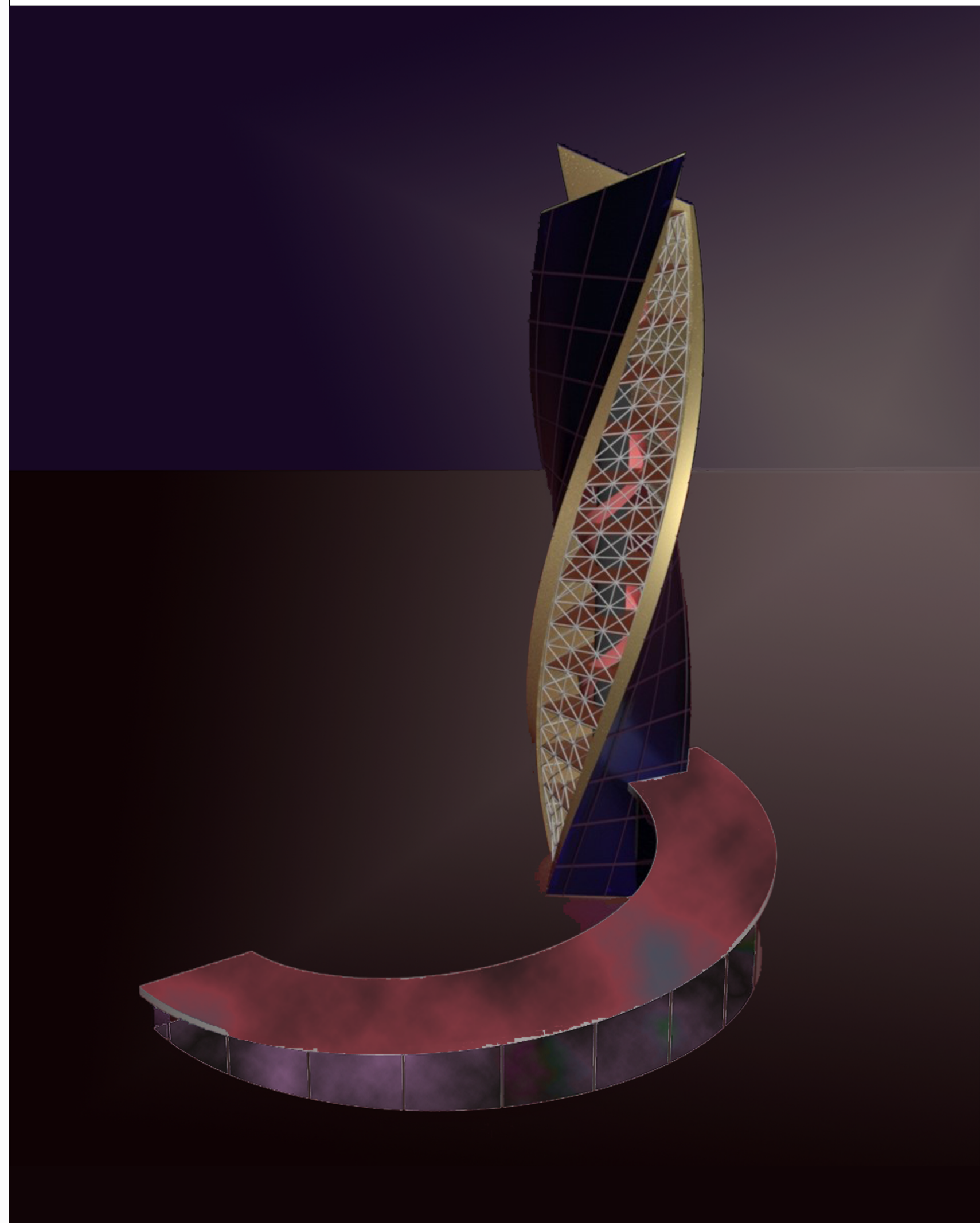
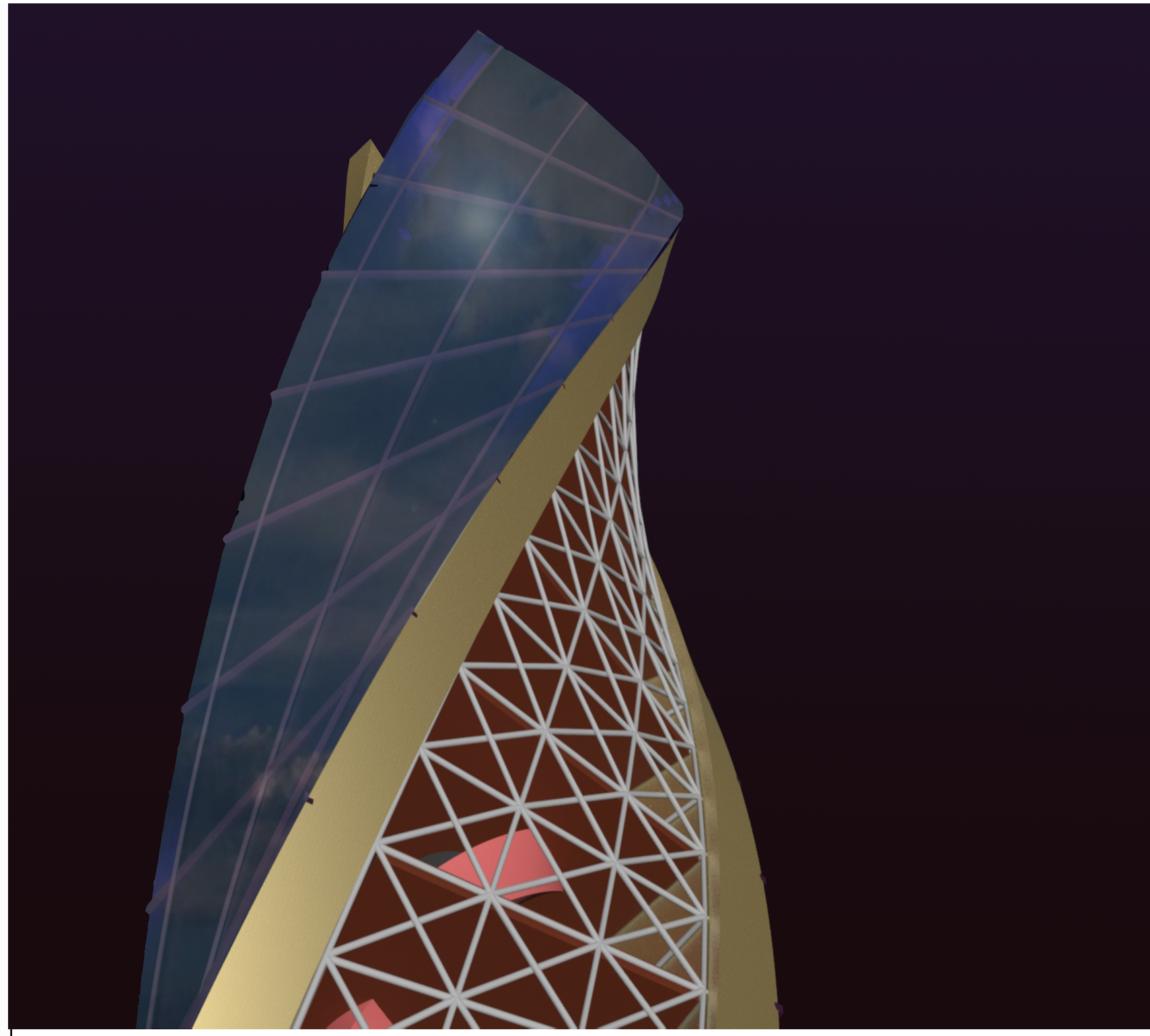


PERSPECTIVE VIEW FROM THE EAST



Artificial Intelligence has inspired numerous creative applications including its usage to produce visual art and architecture. One should wonder if AI is the future creative tool in designing of artistic architectural structure, or leads us in to the future. The future is continues of our history! It is related to whatever is imprinted in our artistic and cultural "DNA". The expressive and symbolic value of architectural elements and forms had evolved through centuries of building with the imprinted perception codes associated with esthetic, proportion and symbols.

The physical characteristics of the building combine conceptual characteristics of meaning including pluralism, double coding, dynamic, growth and "step into the future", though the height of the "tower" is limited to 200 feet. The spiral sculptural shape that is designed by modern technological and engineering methods has both mechanic aesthetic and organic form.

**LOCATION**

The "west bank" is planted with high trees and is dominated by the silhouette of the SAP building. While The east side offers open sight lines. In order to emphasize the simple, though powerful shape of the structure within the surrounding landscape, the high "tower" should be located within elevated open area on the "East bank".

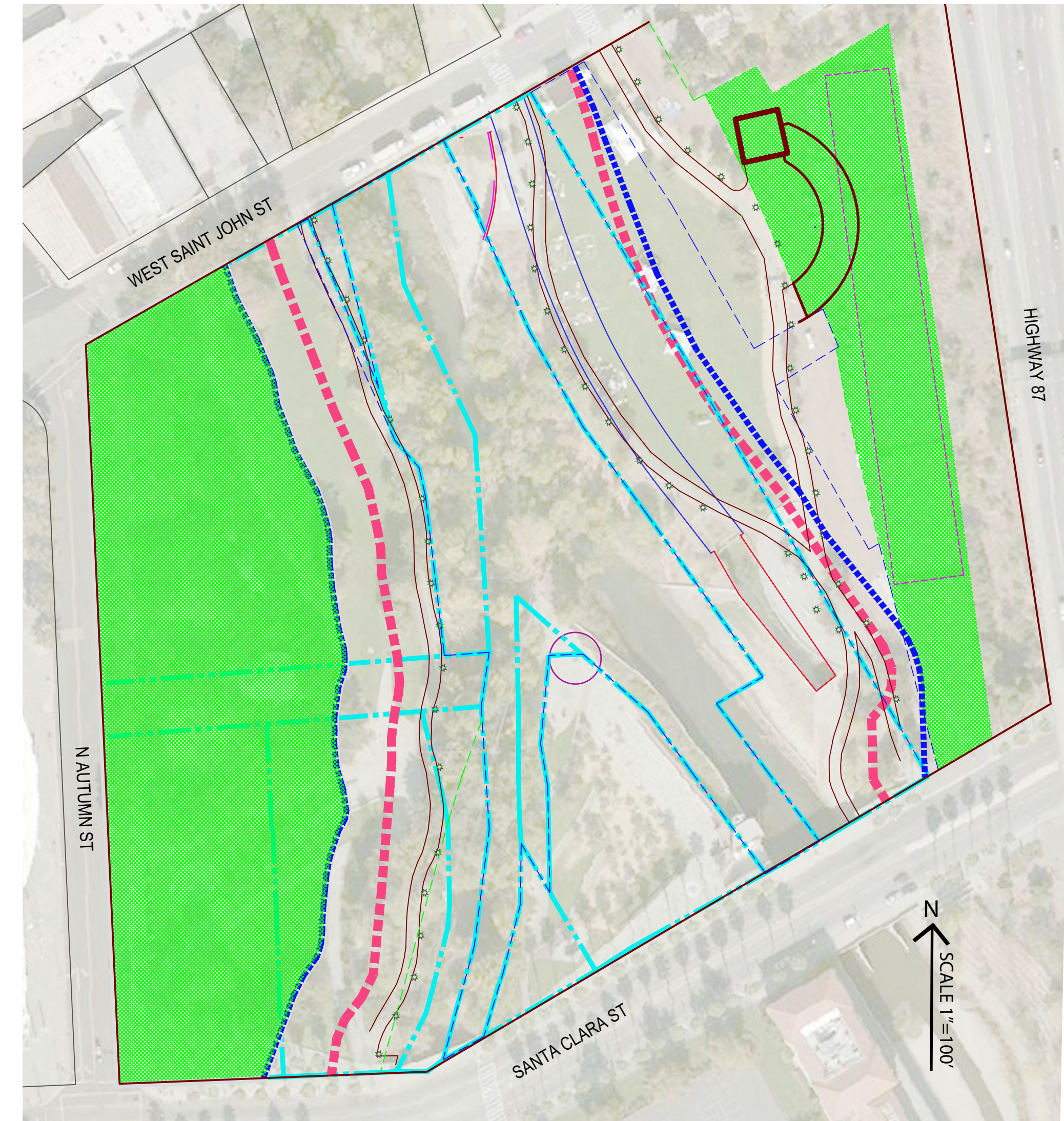
**THE LANDMARK**

The spiraling tower is composed of horizontal and inclined steel girders attached to a concrete core formed like a pipe, while the facades rises with rotation which creates a sculptured dynamic form. The structural framework enables the construction of internal elevator and stairs within the vertical core. While the spine – core takes perimeter vertical loads, the internet skeleton around it provides wind resistance and dampens the structures vibrations.

The dominated façade elements are combined envelope of sun-collectors or metal sheets and create powerful effects. The sculptured formation allows transparency while simultaneously providing plays of light and shadow.

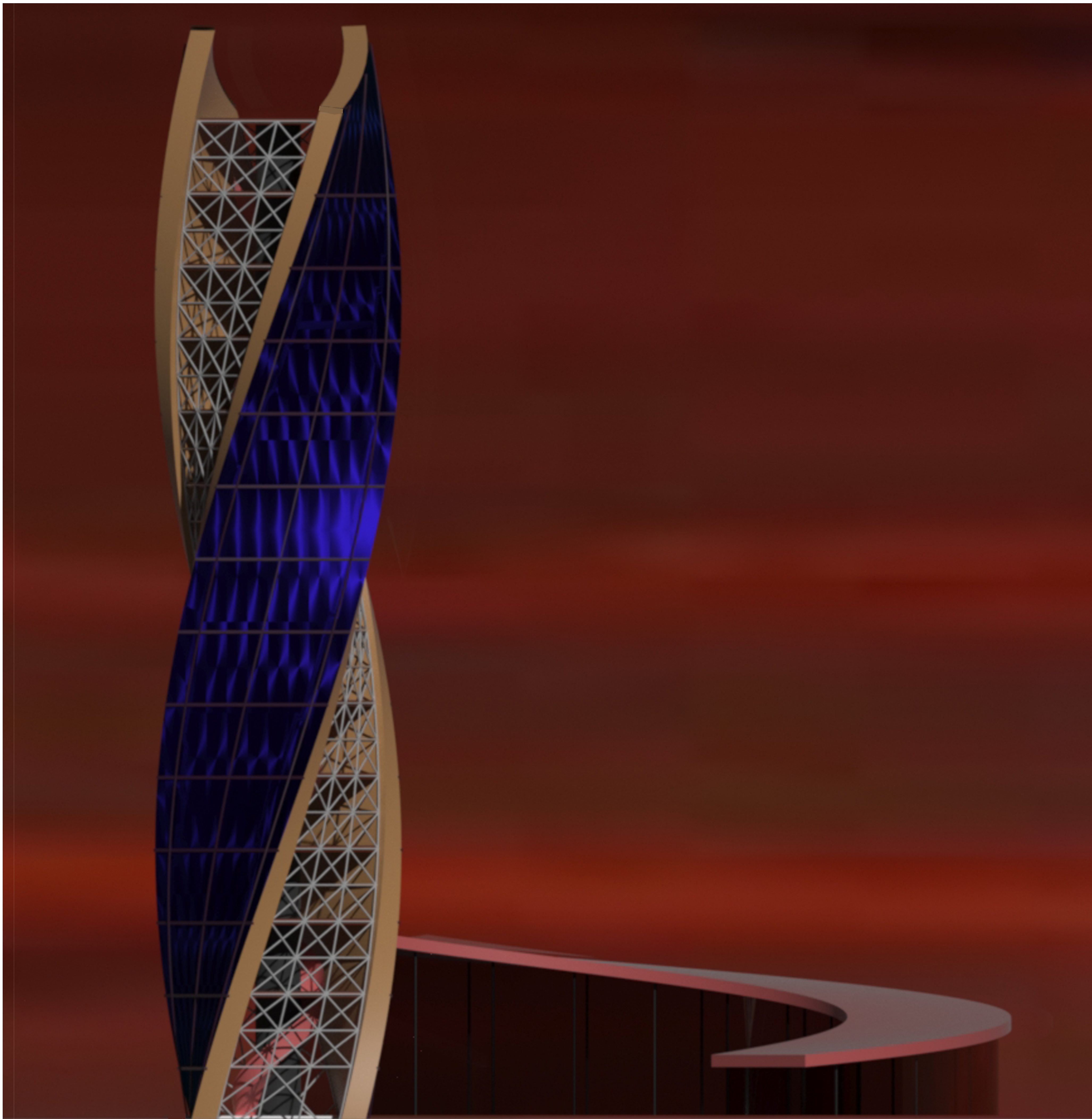
**Ground level facilities**

he arch-shaped horizontal building, constructed with transparent facades, enables the establishment of ground-level facilities, while the entire main vertical structure can be viewed from the surrounding landscape

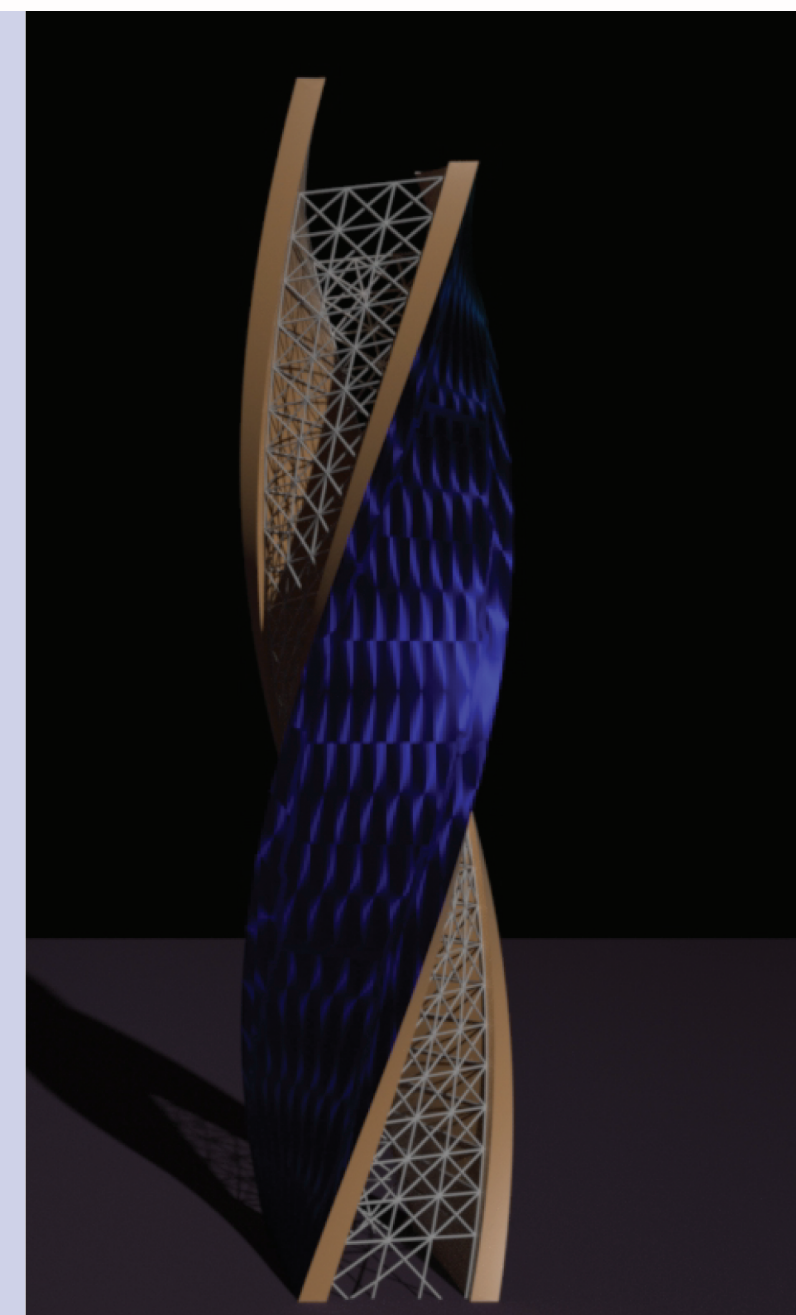
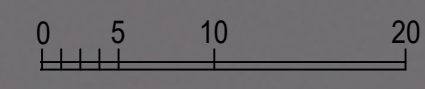


Reflect on the past, live the present and look up to the future

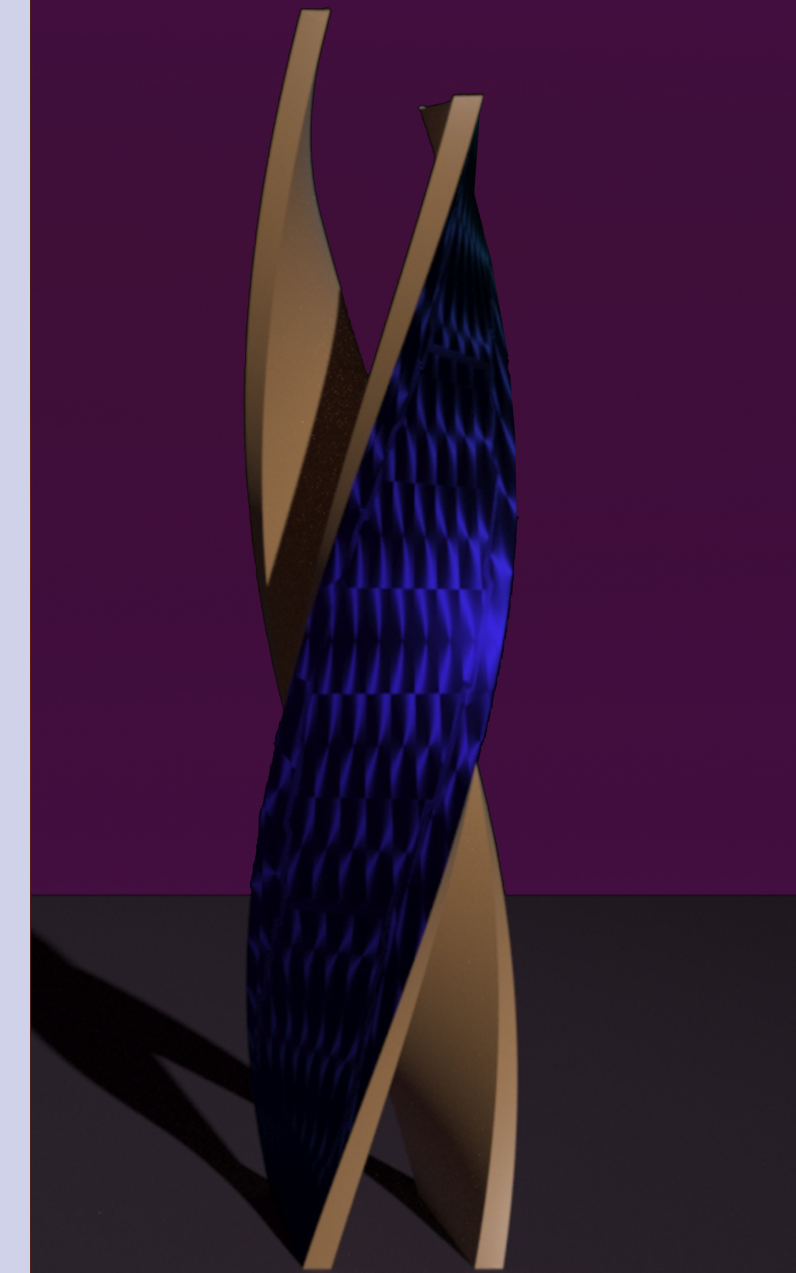




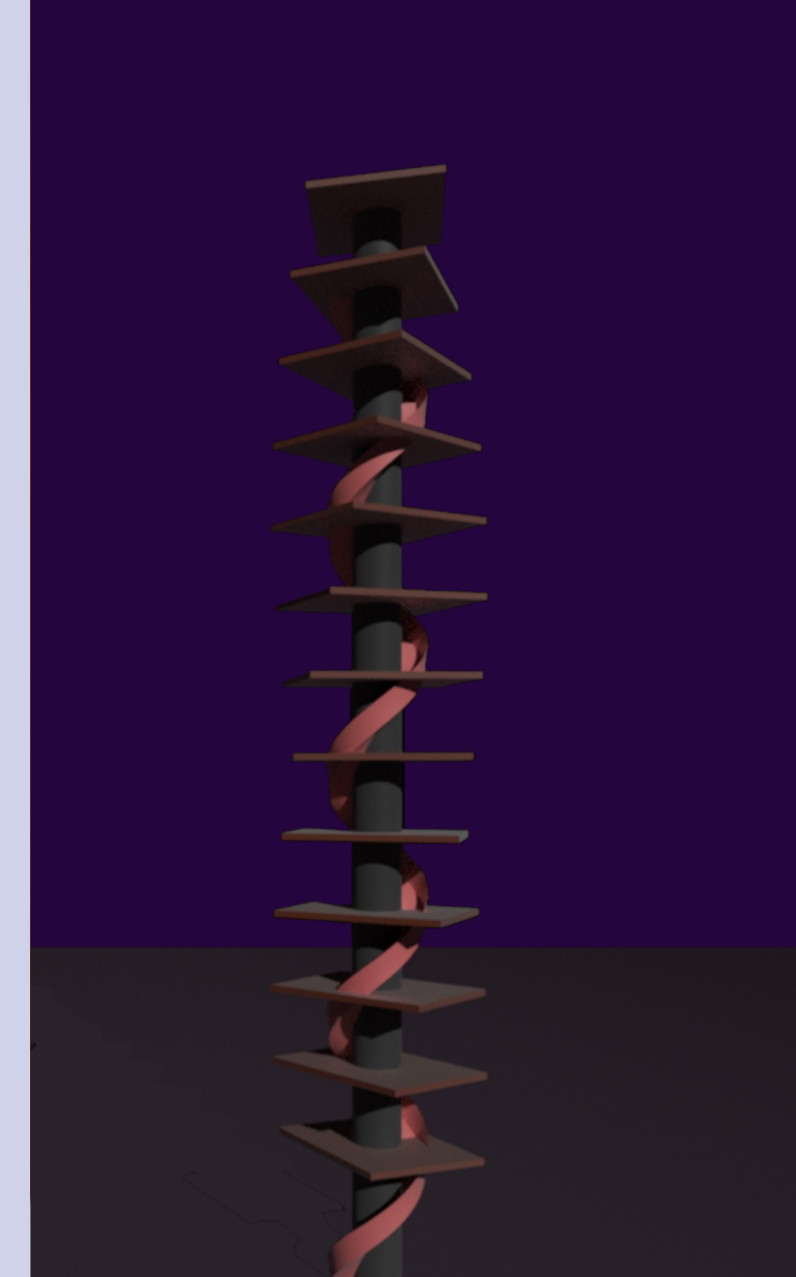
FAÇADE- SCALE 1'=10"



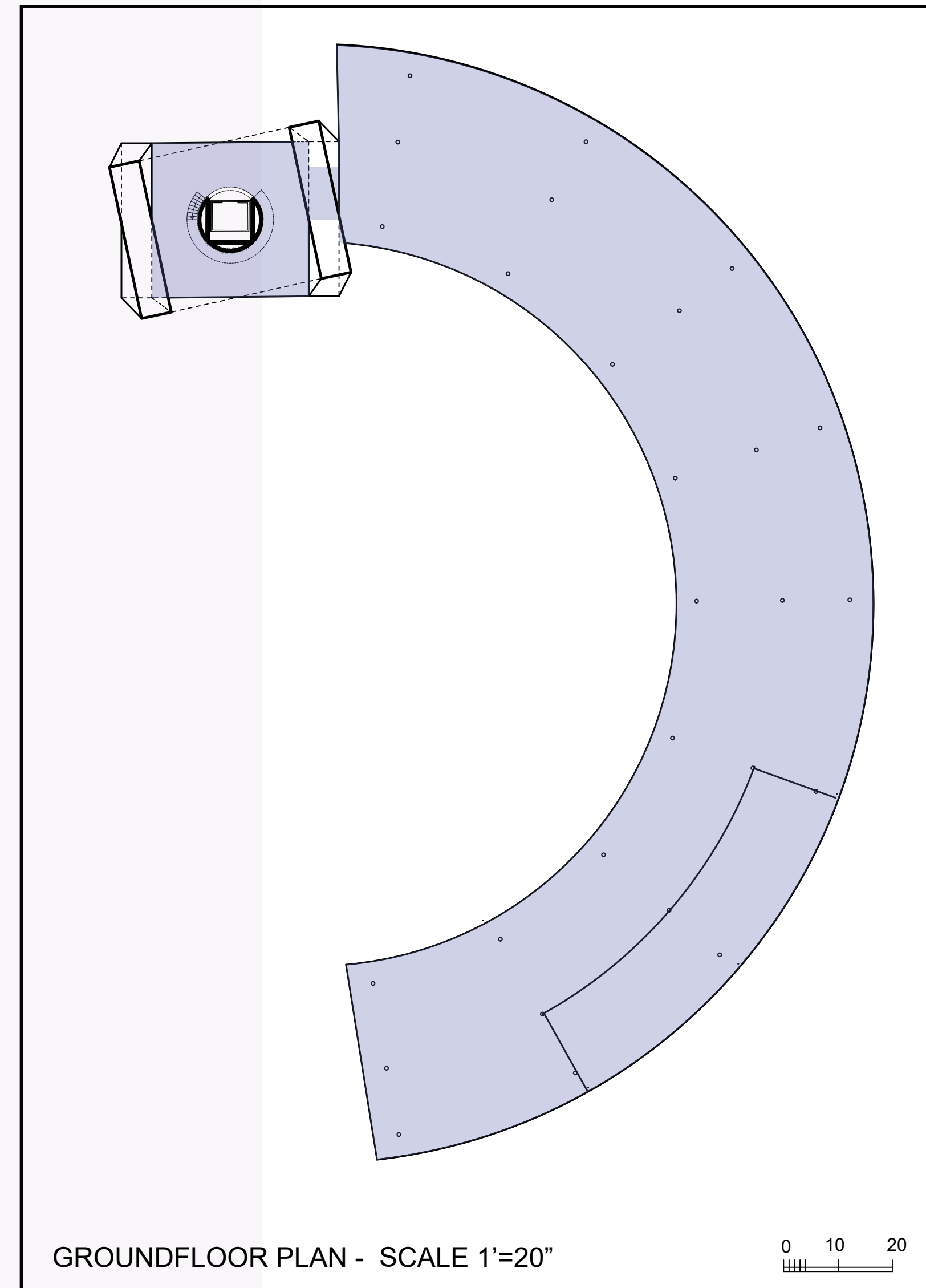
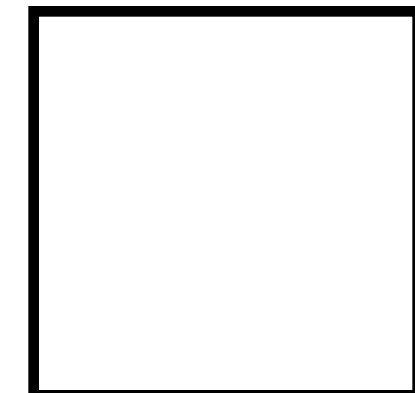
THE COMPLETE COMPOSITION OF THE FAÇADE ELEMENTS WITH STEEL GIRDERS



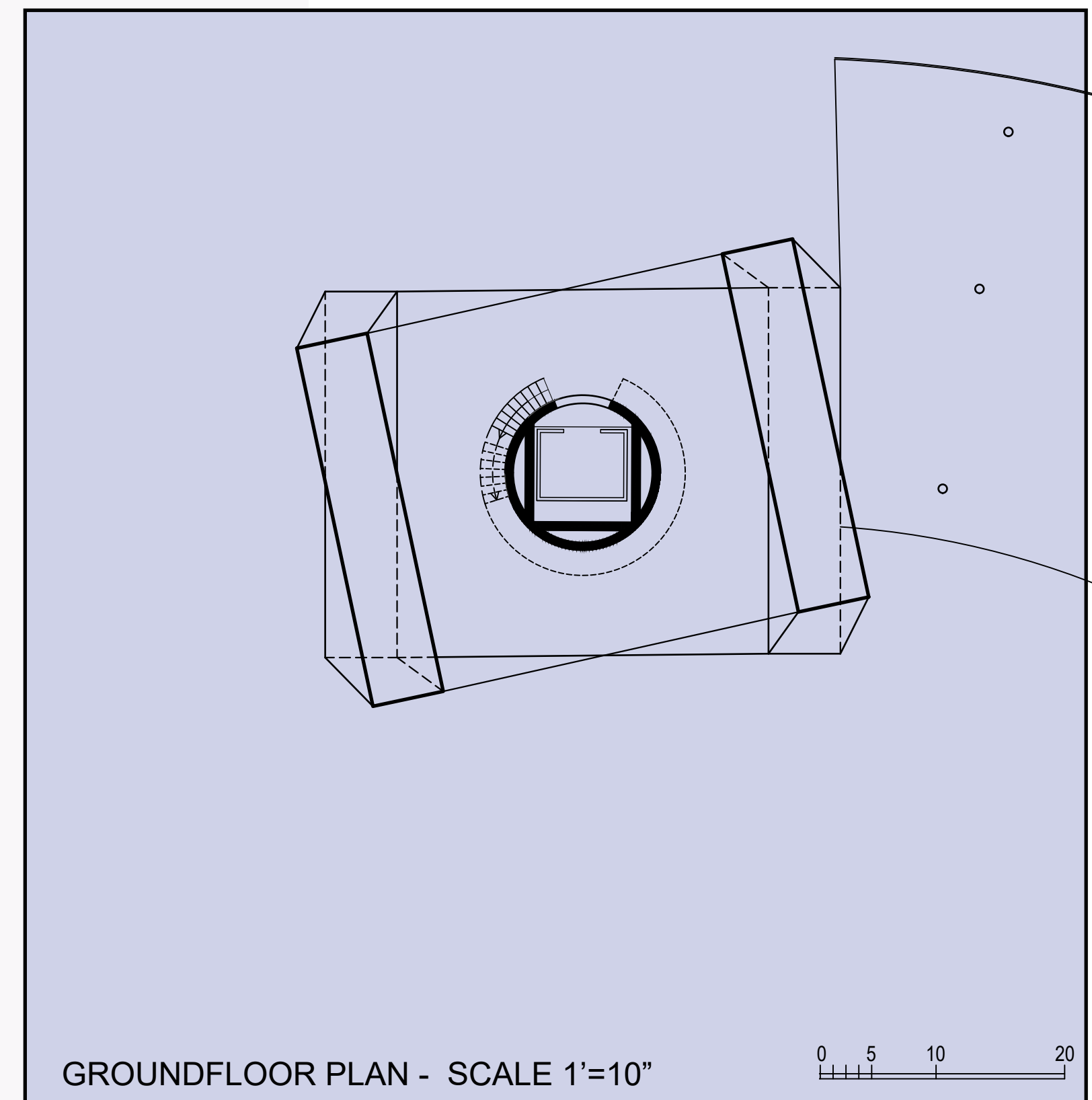
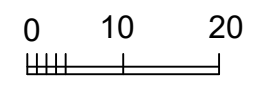
FAÇADE ELEMENTS- COMBINED ENVELOPE OF SUN-COLLECTORS AND METAL SHEETS



HORIZONTAL FRAMEWORK- FLOORS THE CORE- ELEVATOR AND OPEN STAIRCASE



GROUND FLOOR PLAN - SCALE 1'=20"



GROUND FLOOR PLAN - SCALE 1'=10"

