

Axometric view

theLYNX



IS IT A MOUNTAIN?

A SCULPTURE?

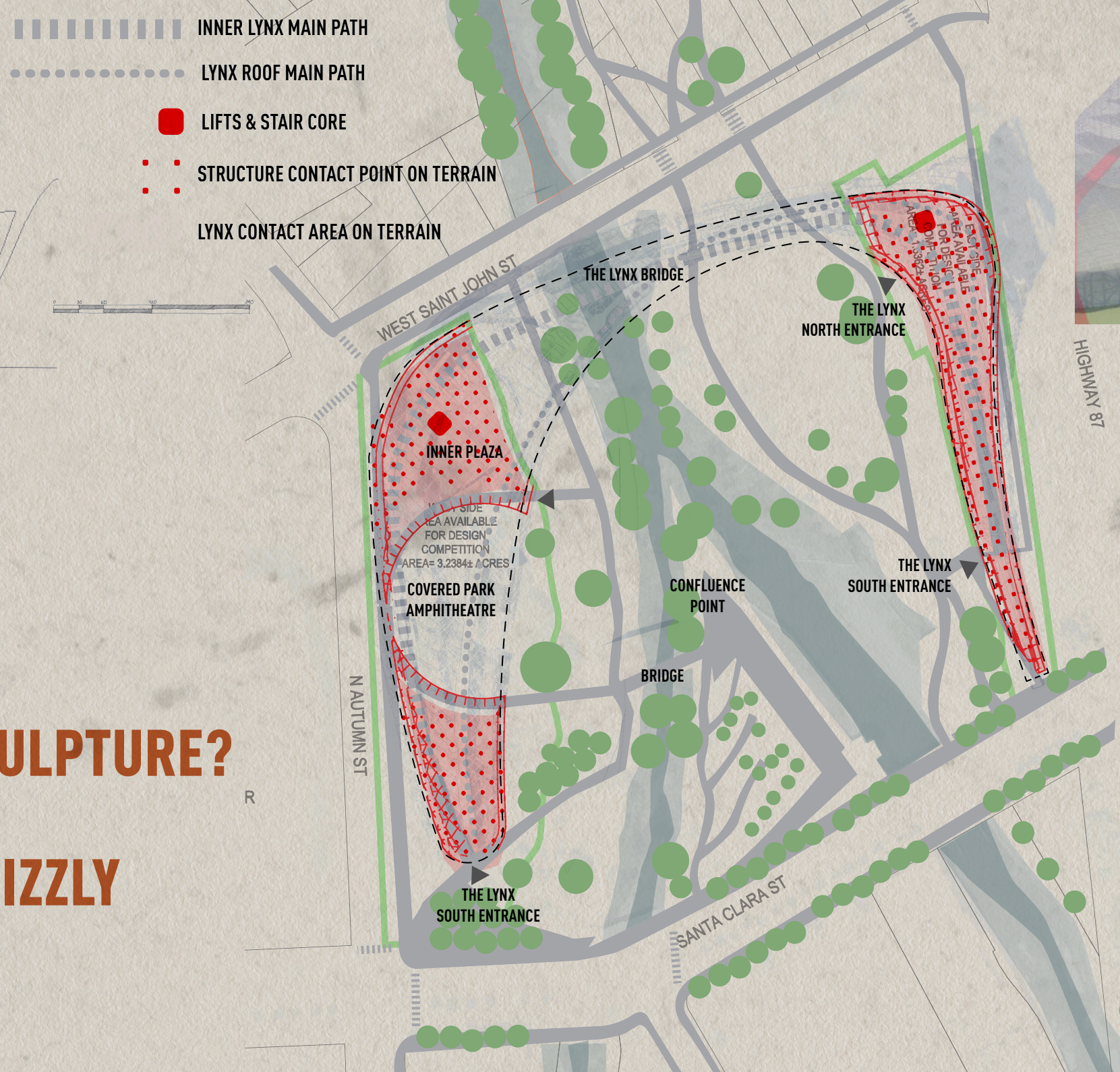
A HYPERTROPHIED GRIZZLY
ROLLER COASTER?

IT'S THE LYNX! A NEW MONUMENT CONCEPT.

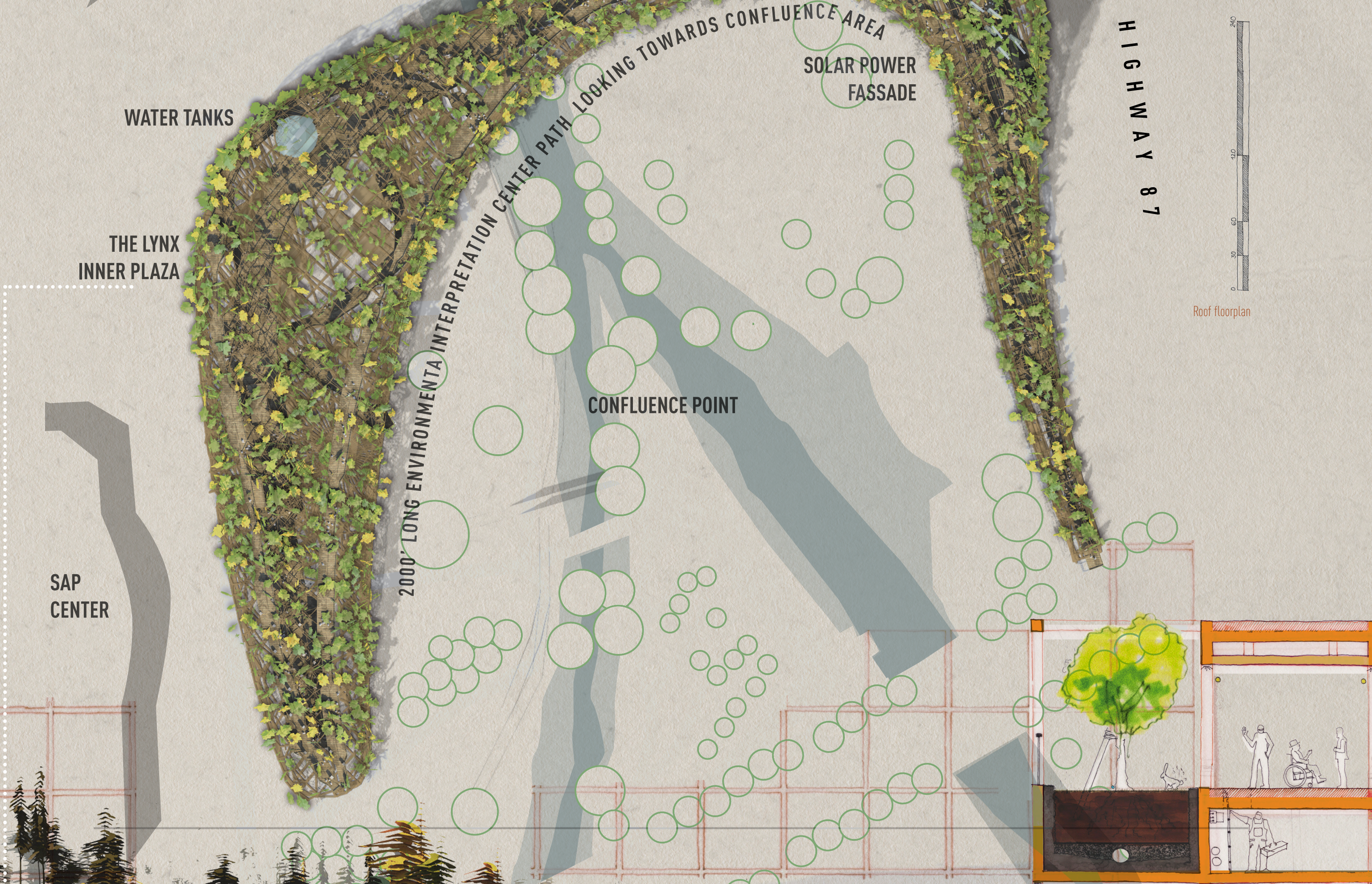
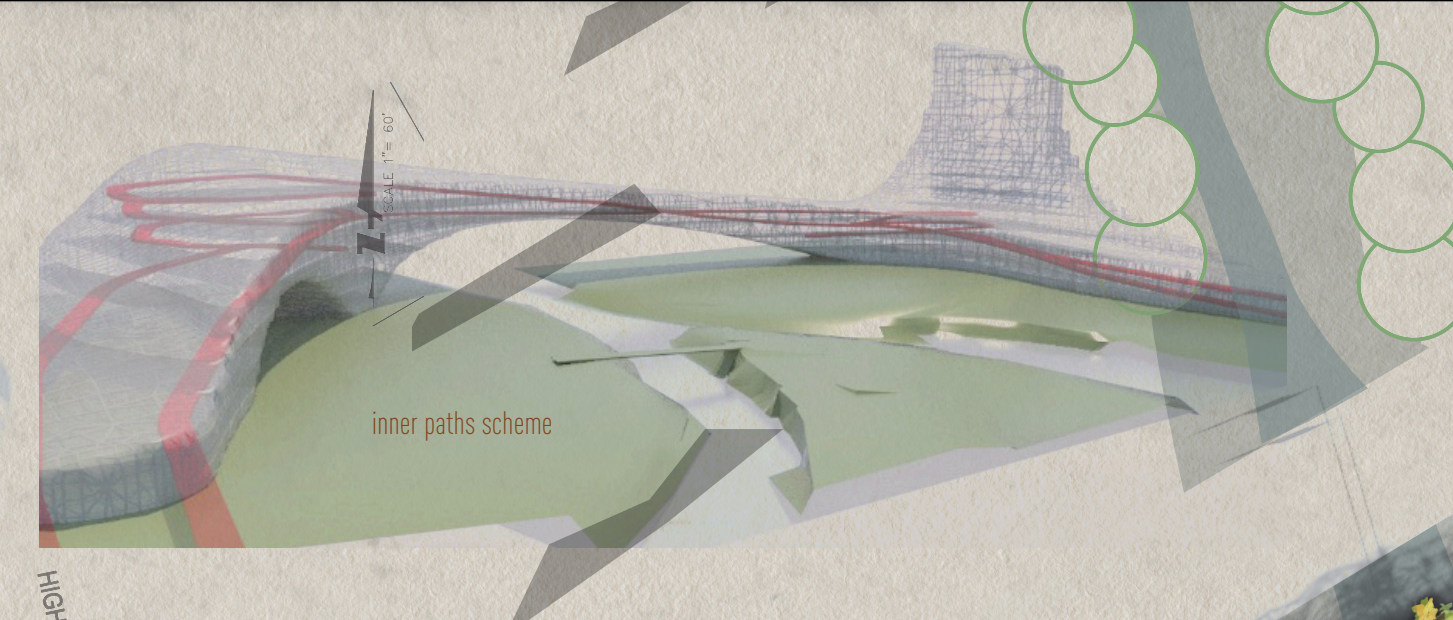
A technical challenge with a **300 feet span bridge** and a **200 feet high tower** made out of laminated wood and cellular glass both modelled by using the latest **Computer Numerical Control**.

Solar energy is used to load water up the structure accumulating **potential energy** and then letting it descend through earth filled trays which form a pathway linking the Guadalupe River

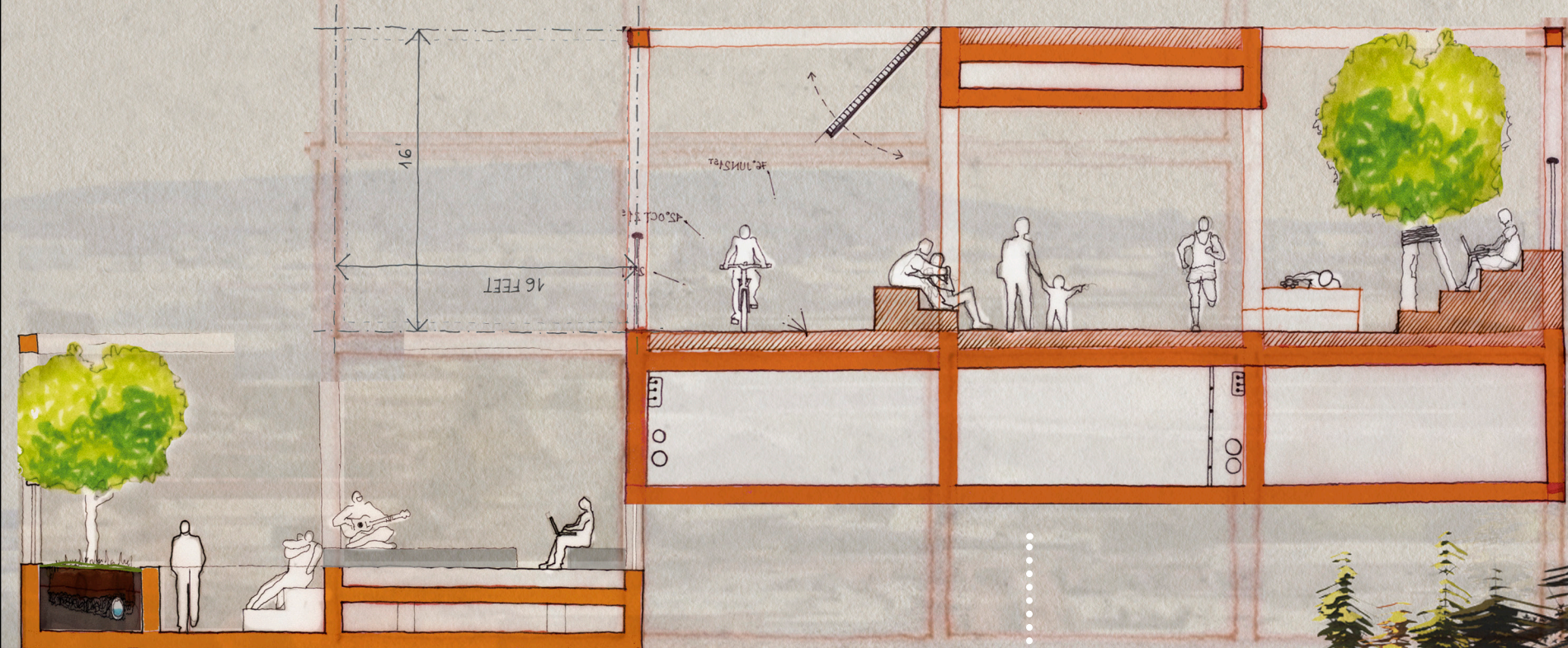
ecosystem with the new building. The Lynx is a **multilayered vertical park** full of paths where san joseans can hang out, gather and enjoy nature. A new landmark in the valley.



Official site map: the building ground structure stays within limits



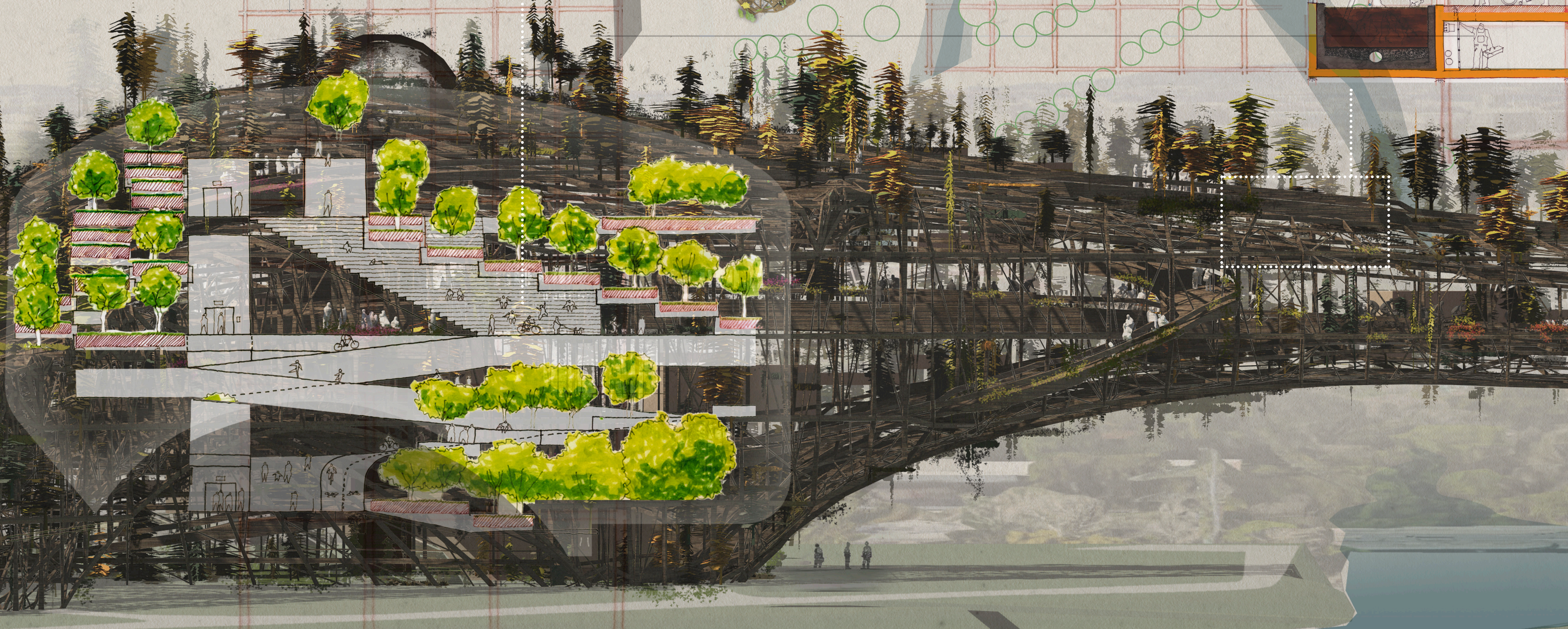
Roof floorplan



from top to bottom: Black-crowned Night Heron, Female and male common merganser, Great Blue Heron, Green Backed Heron, Great Egret and Snowy Egret



theLYNX



Just as the Santa Clara Fisherman's Wharf which houses the sea lions, the Lynx promises to be a safe place for otters, beavers and a place for birds to nest and greens to grow. (sorry pals, our pillars will be rodent proofed)

A MONUMENT AS YOU HAVE NEVER SEEN BEFORE!

It's the Lynx!

A new monumental concept for our century which enhances all the values we yearn for in our future: dynamism, community, nature... Please DO TOUCH! The Lynx provides a frame for the **convergence**, a natural space to protect and to enhance, and a monumental door for the Guadalupe River on its way to the San Francisco Bay.

A bridge (300 feet span) and a tower (200 feet high) defy the structural wooden frame building with the newest computer assisted design and production, all within a strict Forest Stewardship Council certification. While nineteenth century builders erected their monuments in cast iron, today's building edge belongs to sustainable laminated wood. Nature is welcomed into this versatile structure. Just as the Santa Clara Fisherman's Wharf which houses the sea lions, the Lynx promises to be a safe place for otters, beavers (sorry pals, our pillars will be rodent proofed) and a place for birds to nest and greens to grow.

Solar power is used to pump water to the top of the structure to provide **net-zero energy supply** and to liberate various streams which will run down in special earth-filled cellular glass channels by different paths, designed to sustain an ecosystem where local plants and seeds will grow up. As the water runs down, the convergence ecosystem will climb up, developing a vertical green park.

The Lynx will be a **social space**, with trails for pedestrians and cycle paths and traditional "plazas" that will invite san joseans to meet and hang out. They can come hiking, running, cycling, playing, or socializing in

an inhabitable vertical multi-linked structure which will become a clear and significant landmark where they, and the local ecosystem, will animate the monument. **At night, the Lynx will echo the San Jose Tower.** A powerful set of beam lights will point out events, site gatherings, and events taking place within the valley. During the summer nights sprinklers and streams will create a cool environment for hanging out after dinner.

An industrial elevator system will provide the public an opportunity to comfortably ascend and descend through the park. The whole structure will be accessible through ramps and stairs which will provide multiple options for meetings and itineraries.

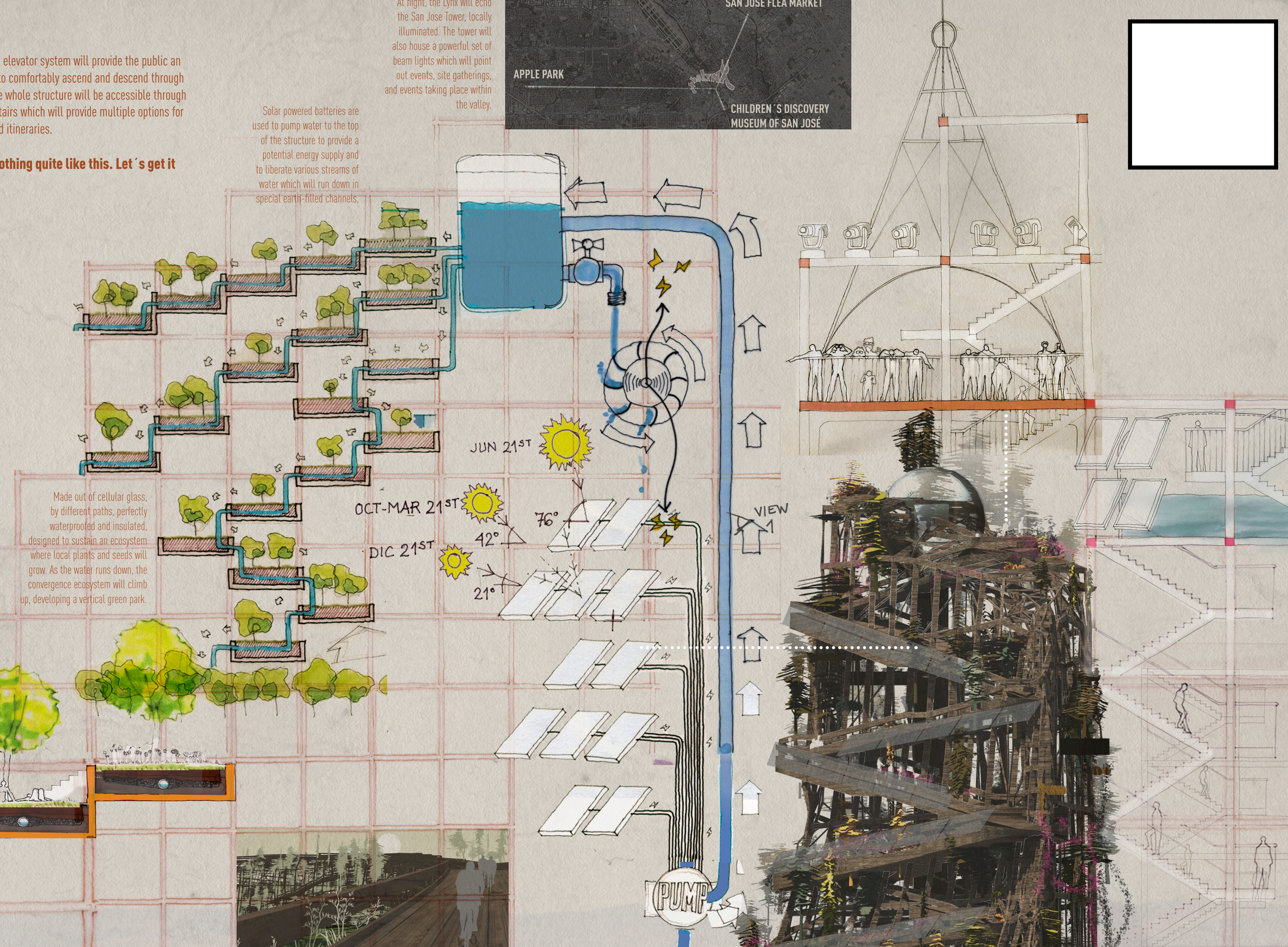
There is nothing quite like this. Let's get it built!

At night, the Lynx will echo the San Jose Tower, locally illuminated. The tower will also house a powerful set of beam lights which will point out events, site gatherings, and events taking place within the valley.

Solar powered batteries are used to pump water to the top of the structure to provide a potential energy supply and to liberate various streams of water which will run down in special earth-filled channels.

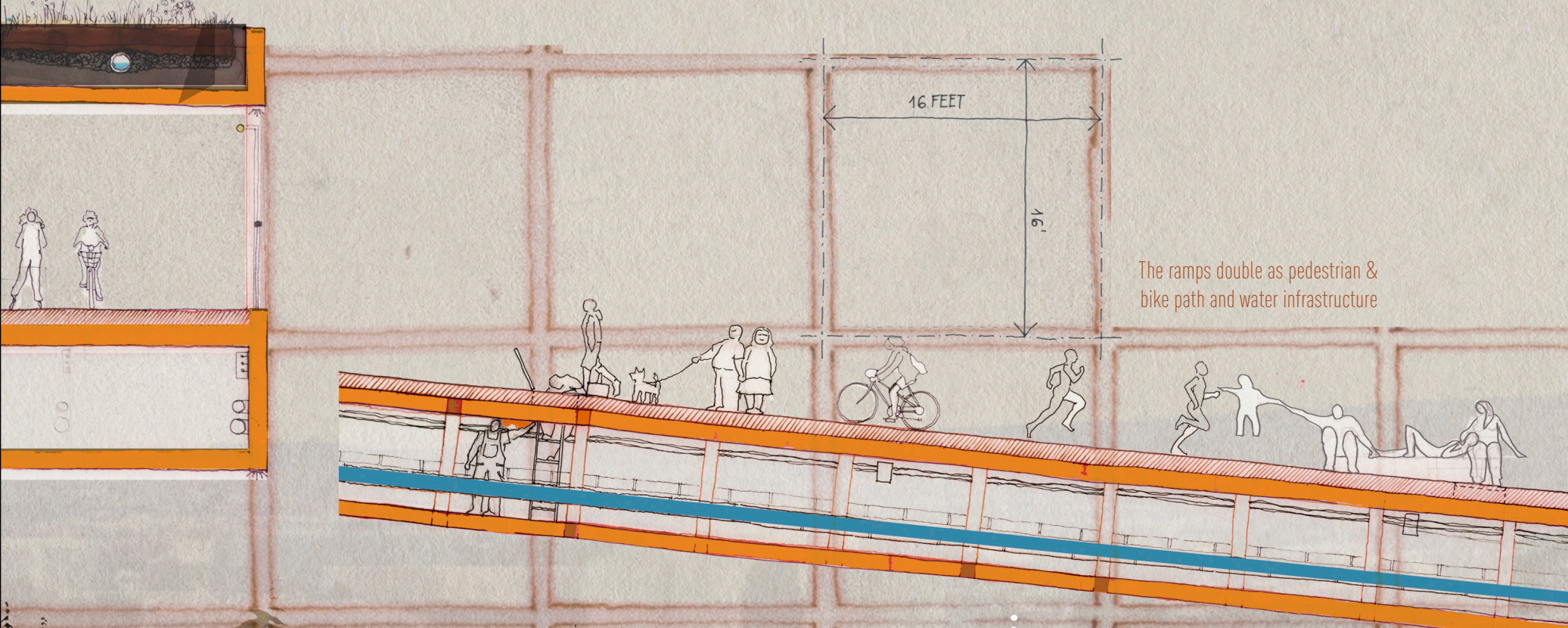
APPLE PARK

CHILDREN'S DISCOVERY MUSEUM OF SAN JOSE



Made out of cellular glass, by different paths, perfectly waterproofed and insulated, designed to sustain an ecosystem where local plants and seeds will grow. As the water runs down, the convergence ecosystem will climb up, developing a vertical green park.

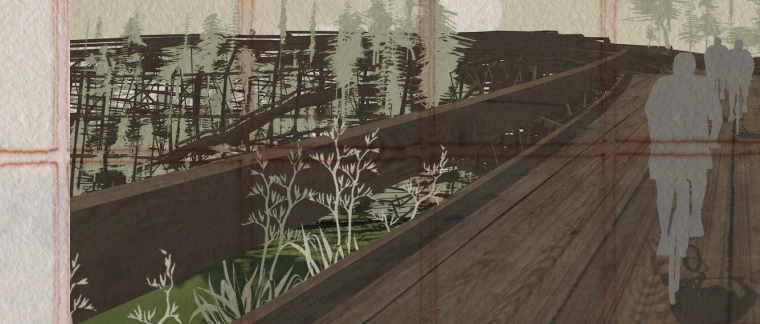
VIEW 1: The Lynx embraces confluence point



The ramps double as pedestrian & bike path and water infrastructure



Amenities happen along the inner path.



VIEW 2: Rooftop bike path



VIEW 3: Bridge interior



Confluence Point

CELLULAR GLASS IS WATER-PROOF and FIRE-PROOF, and has high compressive strength. It is completely INERT so it will be used to house the ecosystemic containers. CELLULAR GLASS can be easily shaped in almost any form through COMPUTER NUMERICAL CONTROL. LAMINATED WOOD has revolutionized the building panorama and there is a competition going on to see who can achieve the highest. There is a considerable amount of proposed wooden tall buildings to be completed during the next years. LAMINATED WOOD can be easily shaped in almost any form through COMPUTER NUMERICAL CONTROL. The use of solar focus spheres will reduce the surface required for solar panels.

