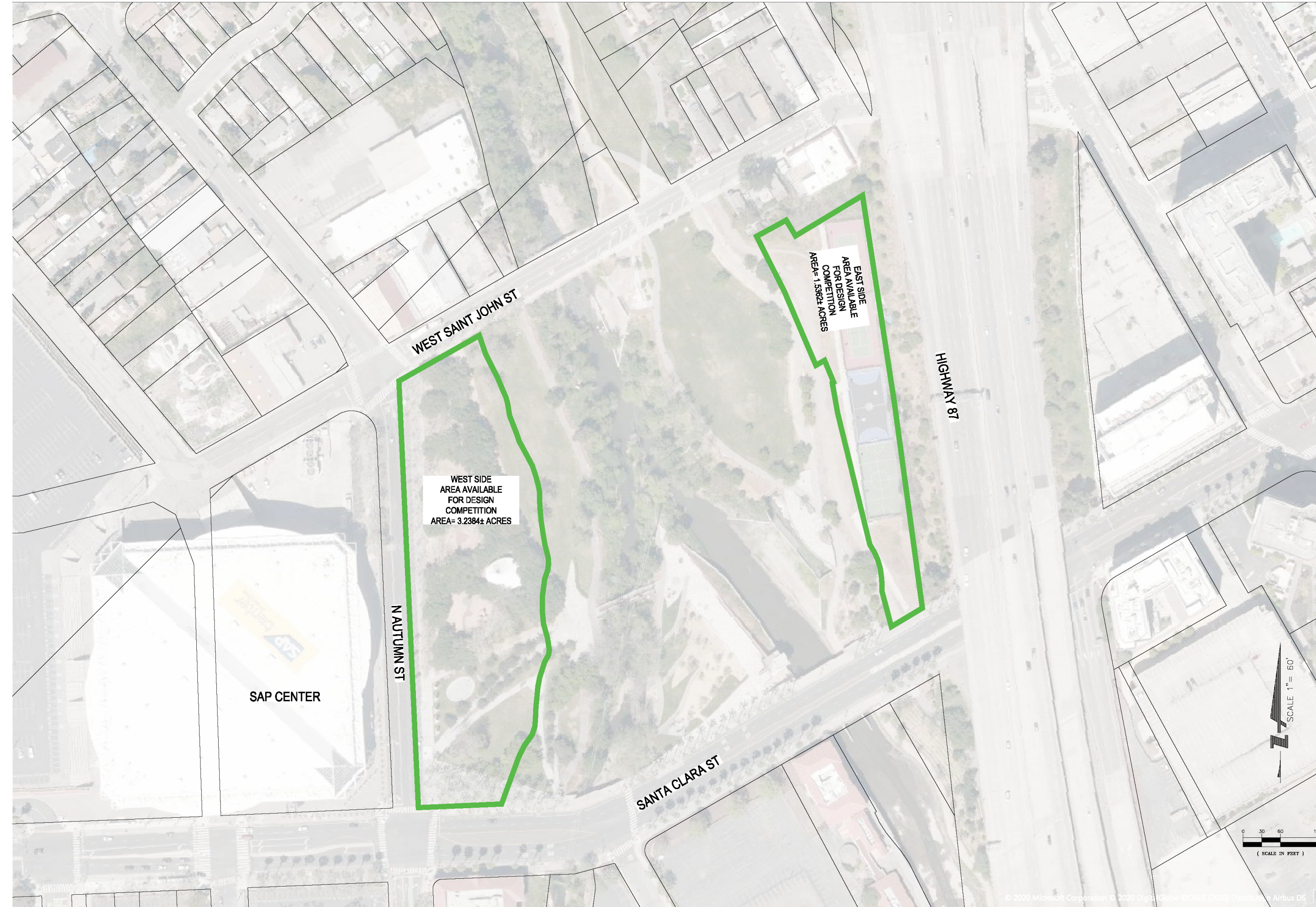
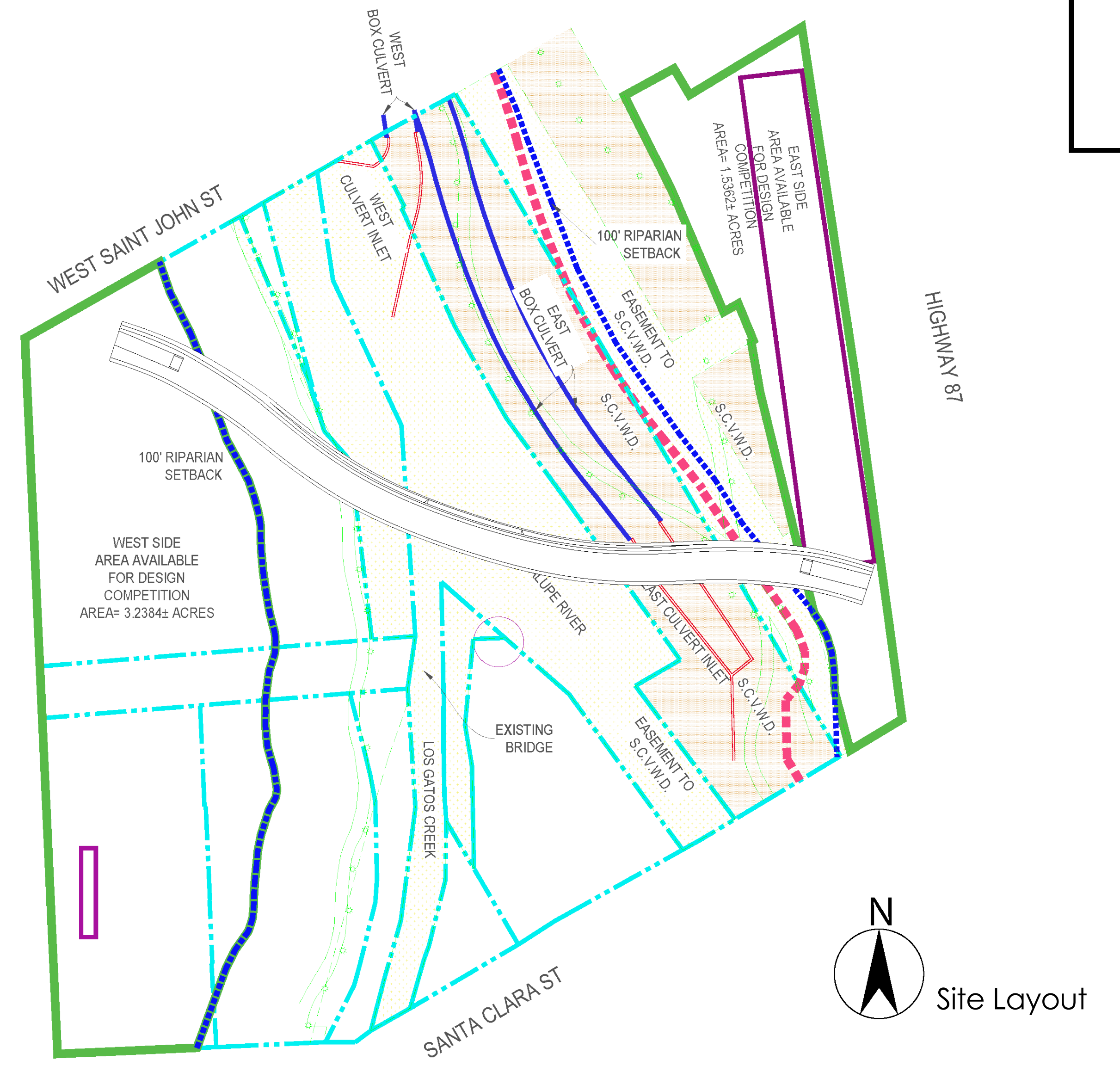


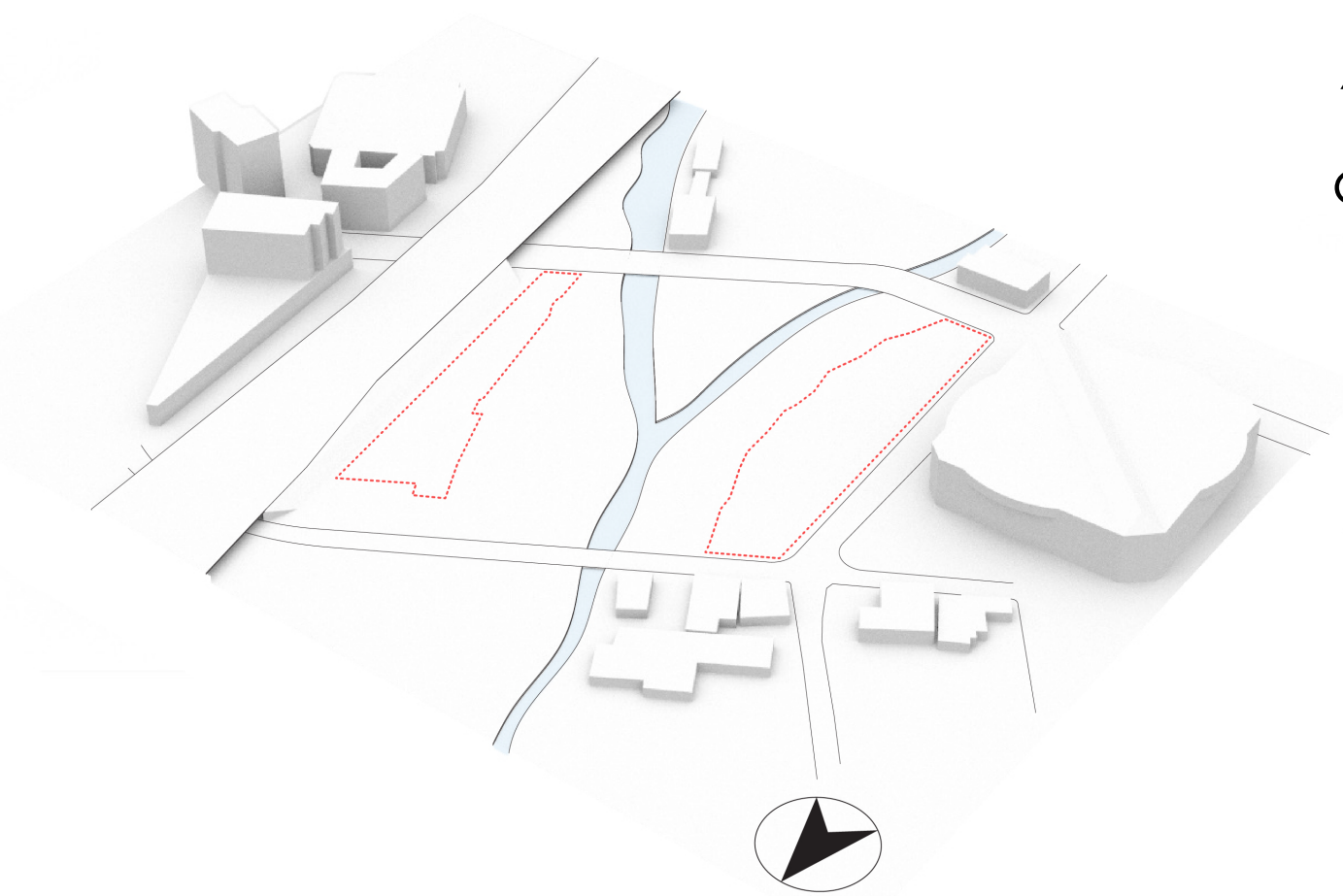
# The Leaning Arch



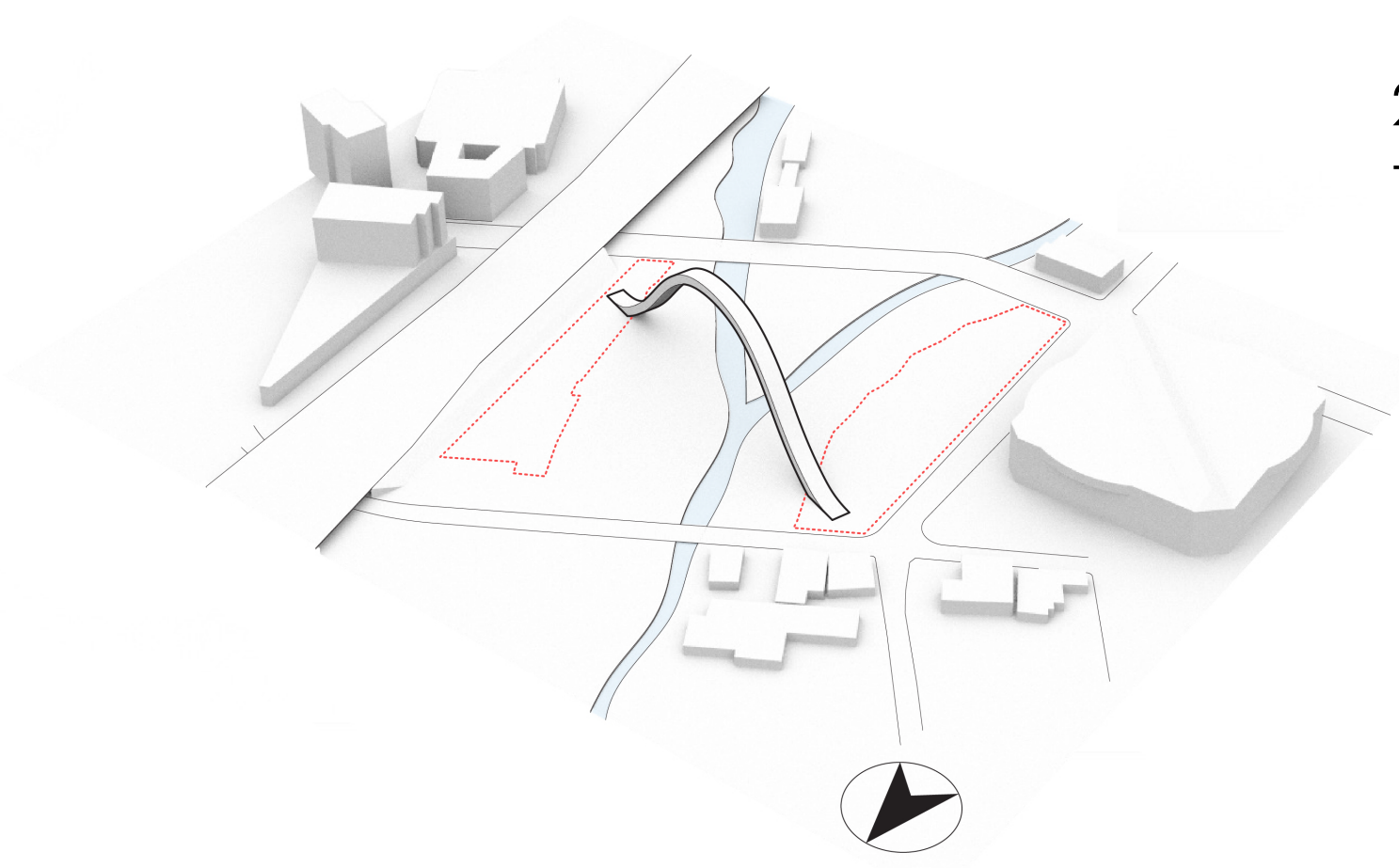
Required Site Map Image



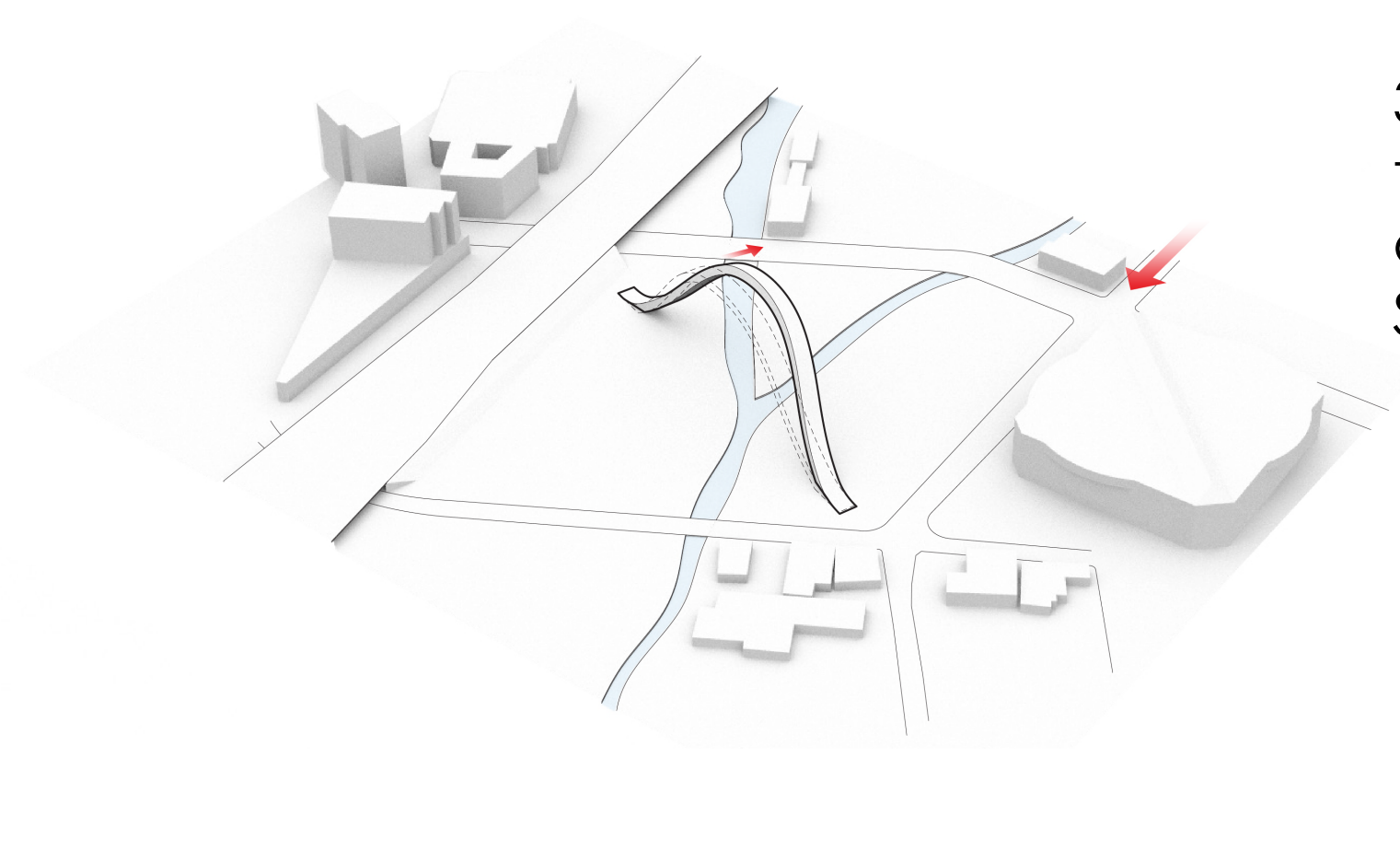
Site Layout



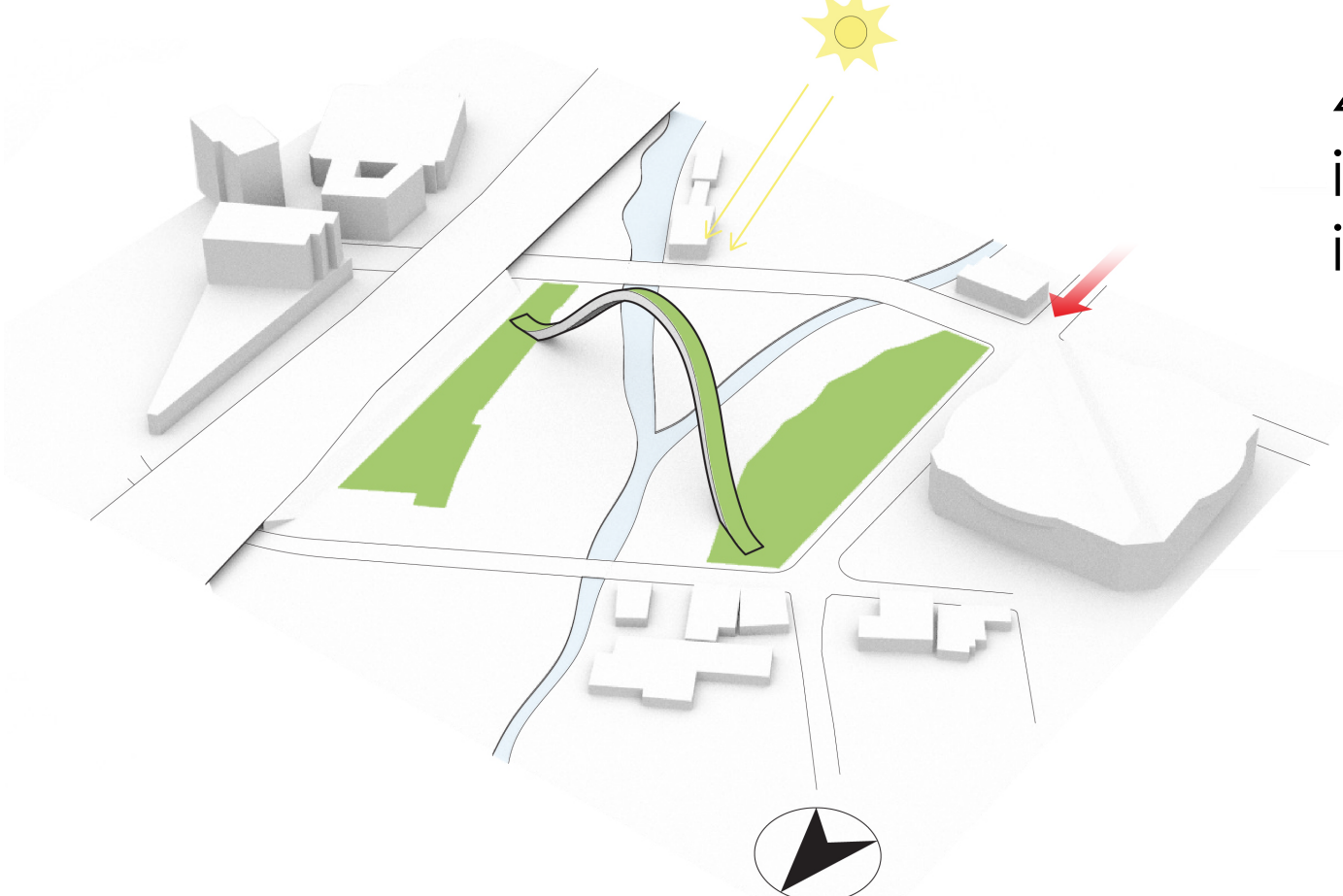
1. The two sites for the competition.



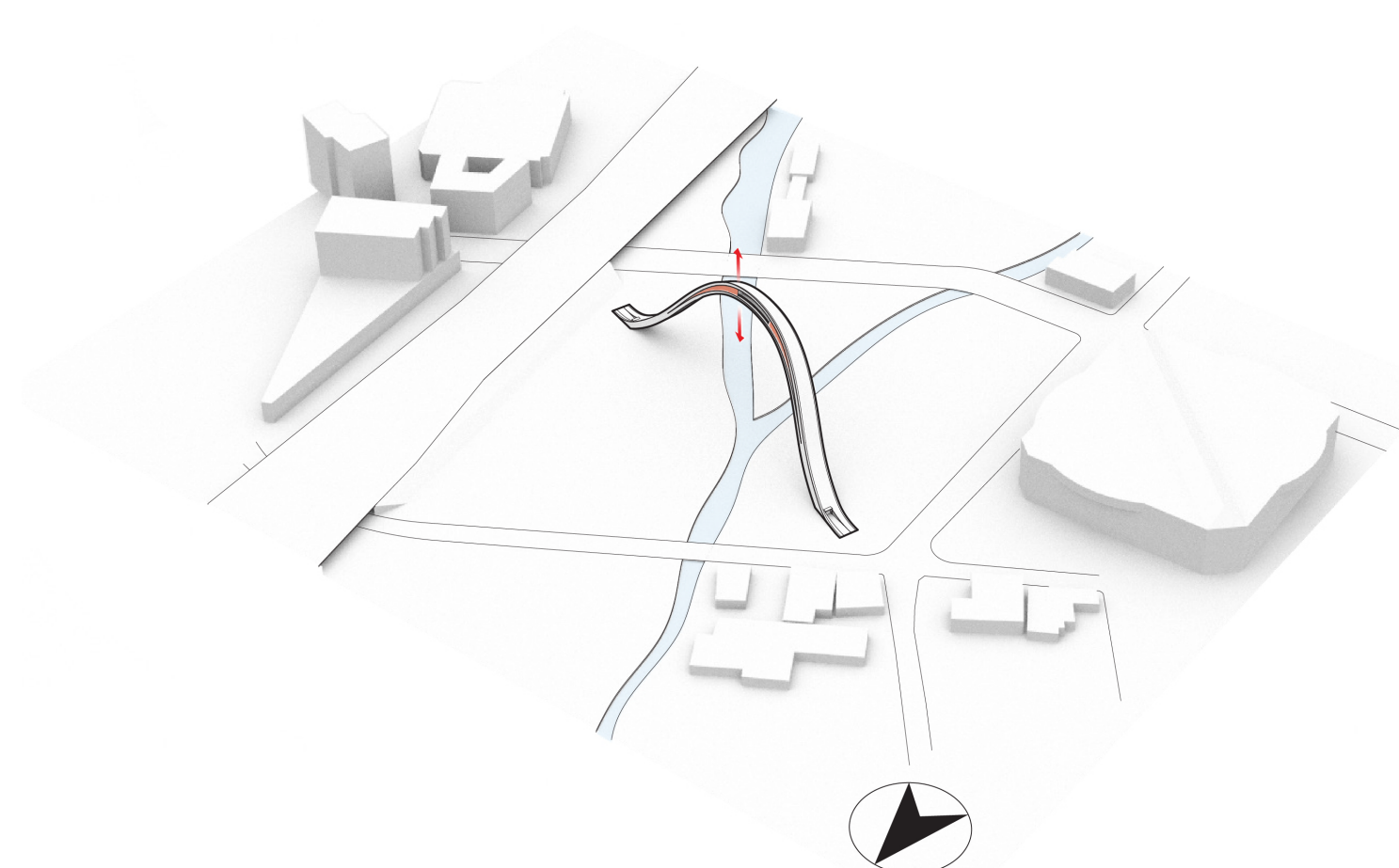
2. An arch connects the two sites.



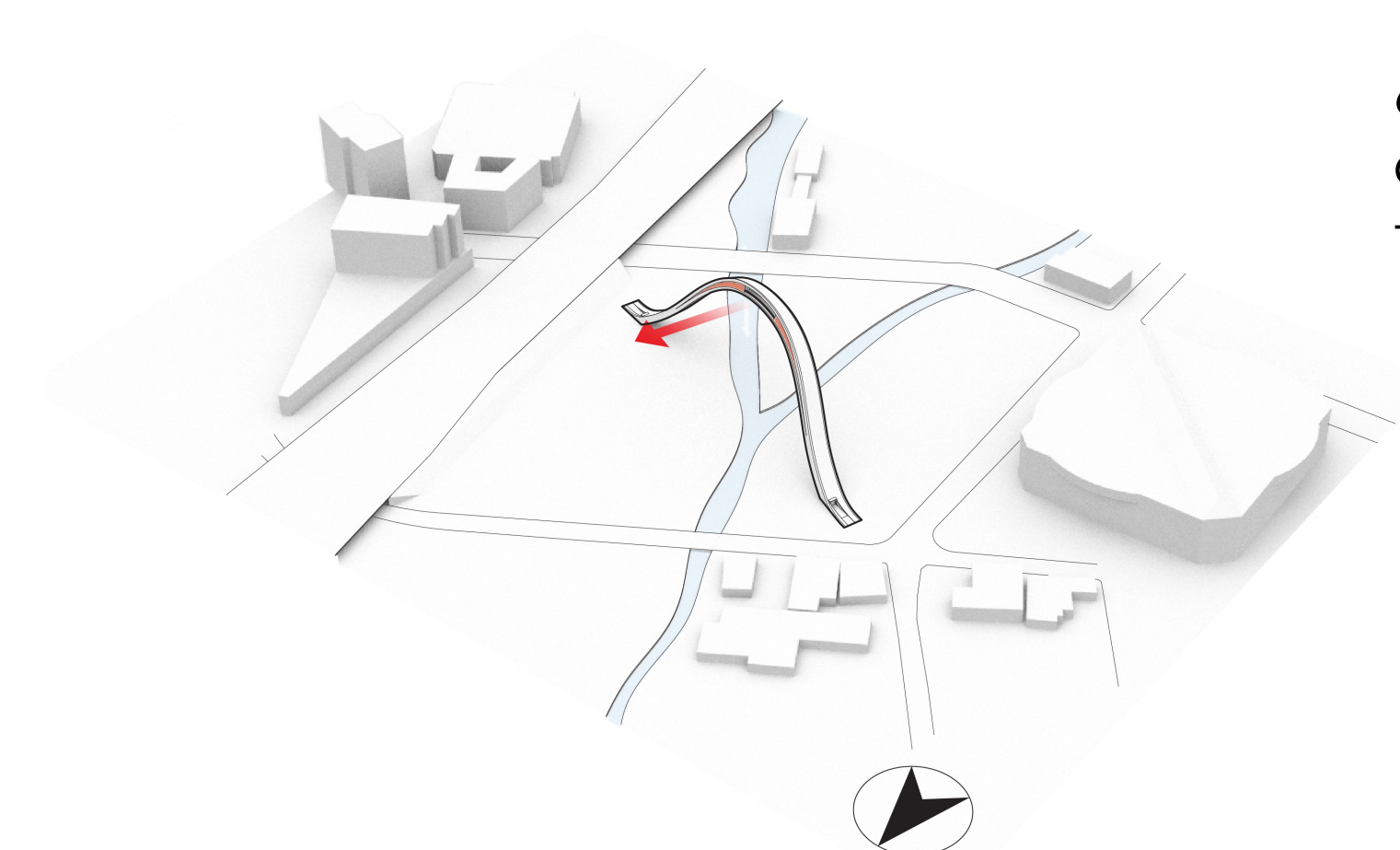
3. Arch is tilted 18° in the direction of approach from Diridon Station



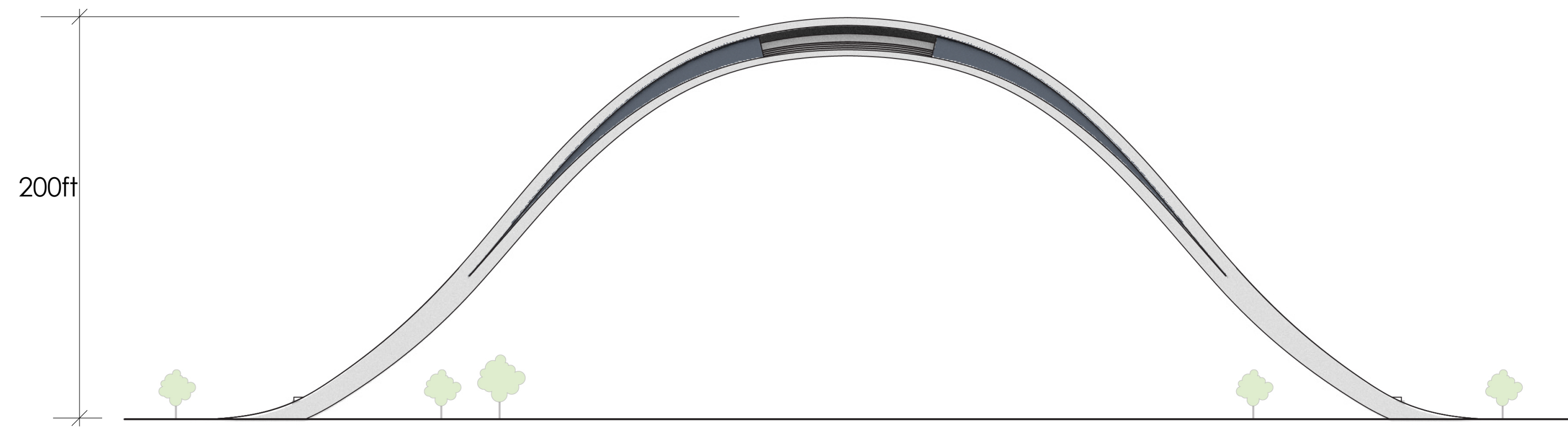
4. A green roof incorporated to make it one with the park.



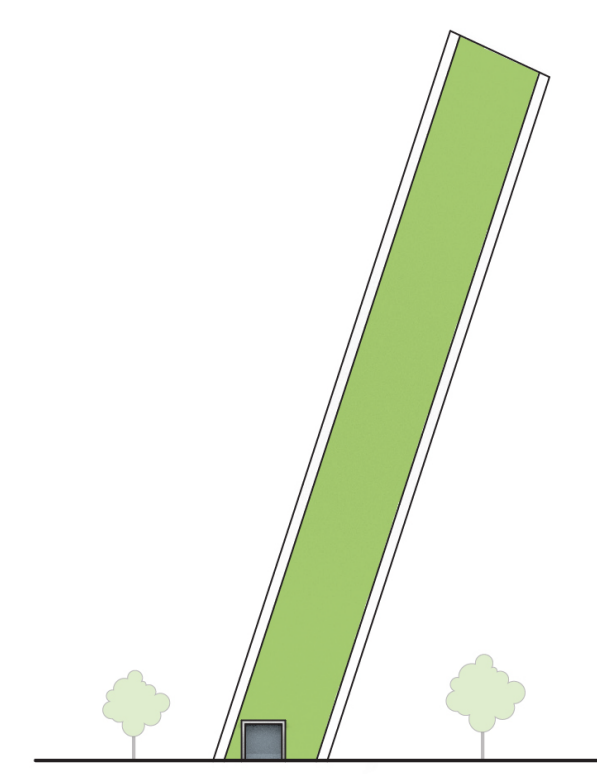
5. Arch is sliced and pulled apart on one side at the top to create two slices that merge into one at the base mirroring the rivers below.



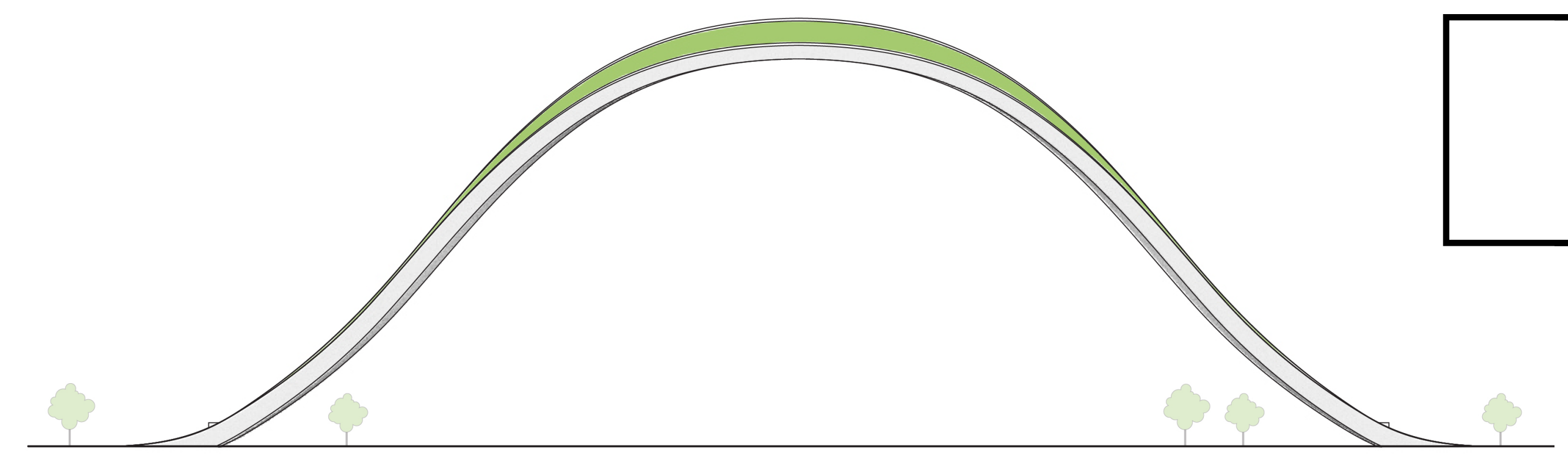
6. An observation area provides views of the surrounding area.



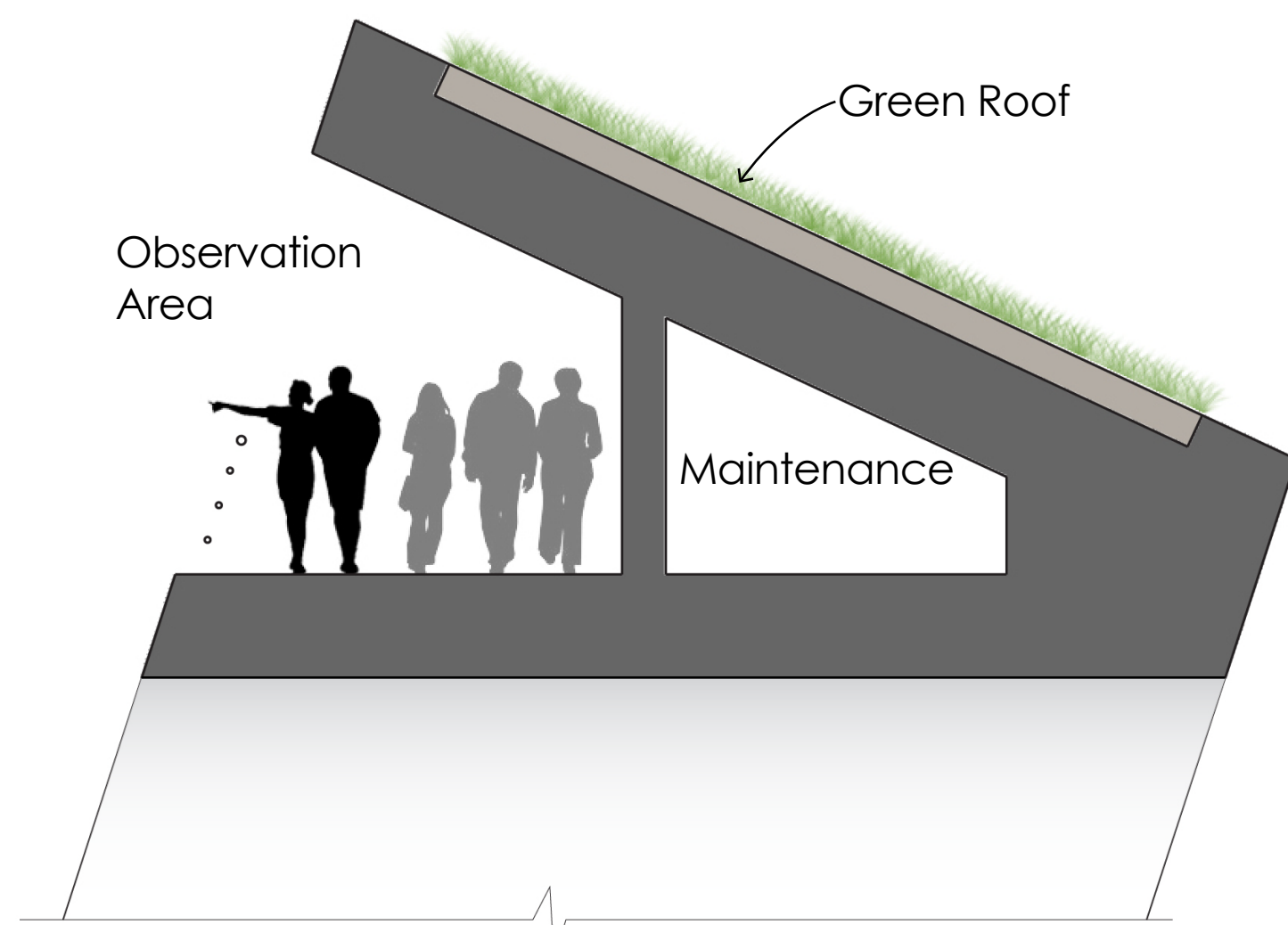
Front Elevation



Side Elevation

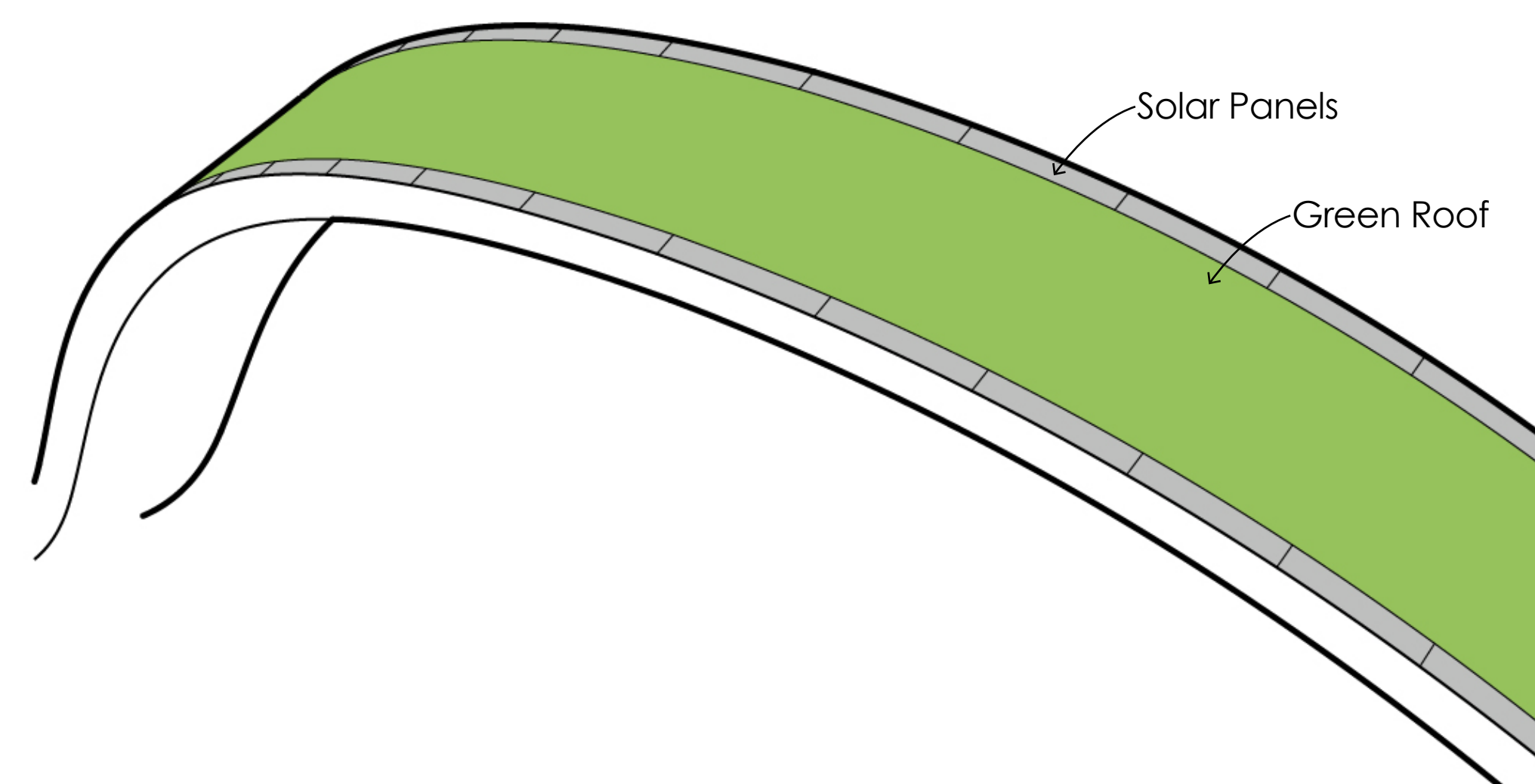


Back Elevation



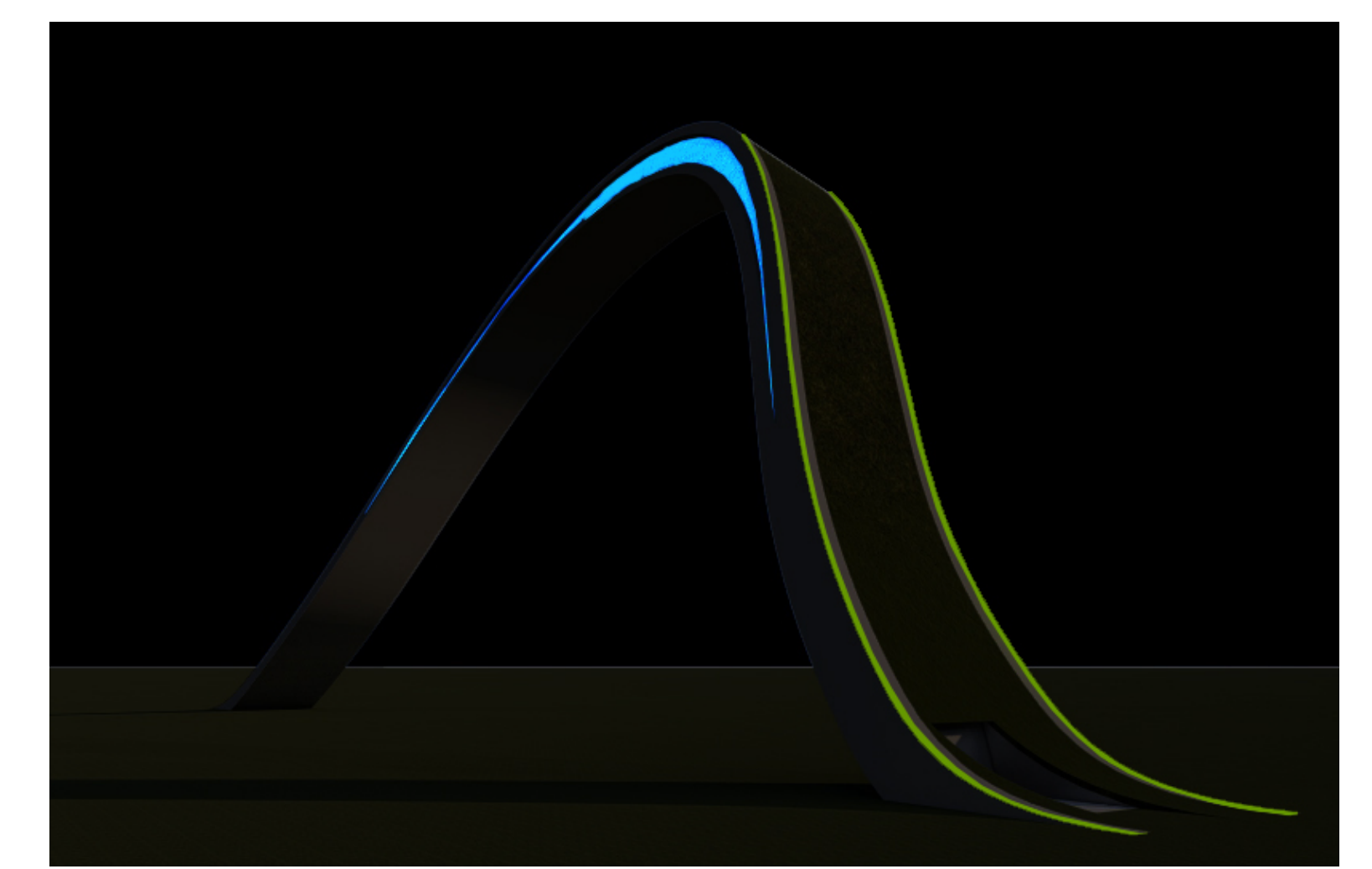
**Section at Top of Arch:**

The observation area provides views of the surrounding area and can be accessed from either side of the arch.



**Net-Zero Strategy:**

The arch is lined with solar panels that generate electricity that powers the lights, elevators, and water pump for the green roof



**Lighting:**

Low luminance blue and green lighting that points away from the river owing to the tilt of the arch is used to create a silhouette of the arch and highlight the split