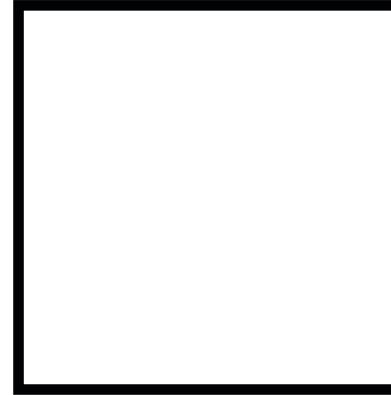
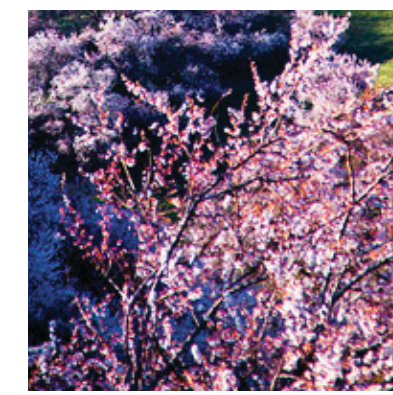
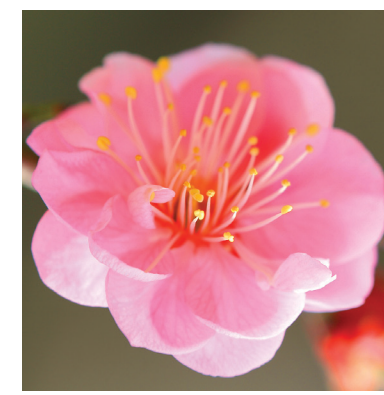
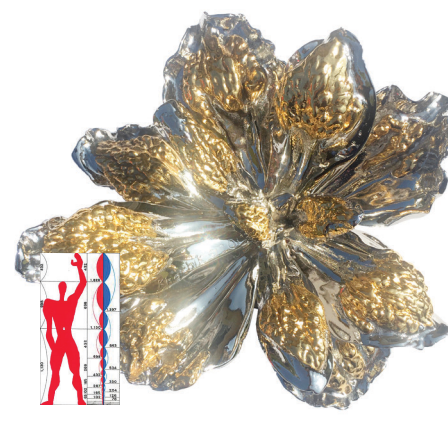


Silicon Valley Sky Park

We drew inspiration from cutting-edge technology conceived and produced by the minds of Silicon Valley, to provide the area with a unique identity, rooted in the local heritage of the past and the present connected to Apricot Valley and the apricot flower blossom.



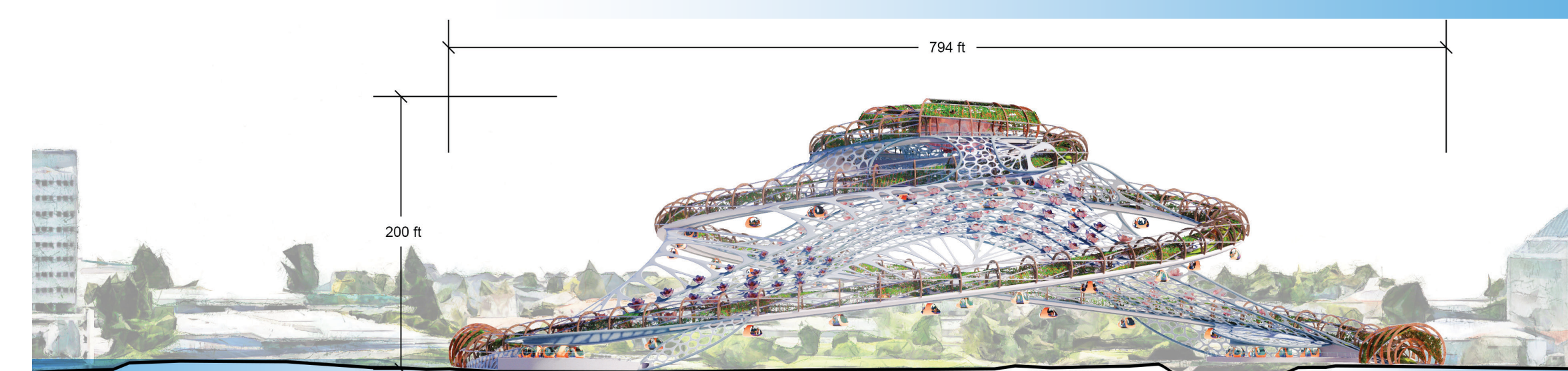
The gentle downlight in the evening allows the structure to **merge with the night sky.**



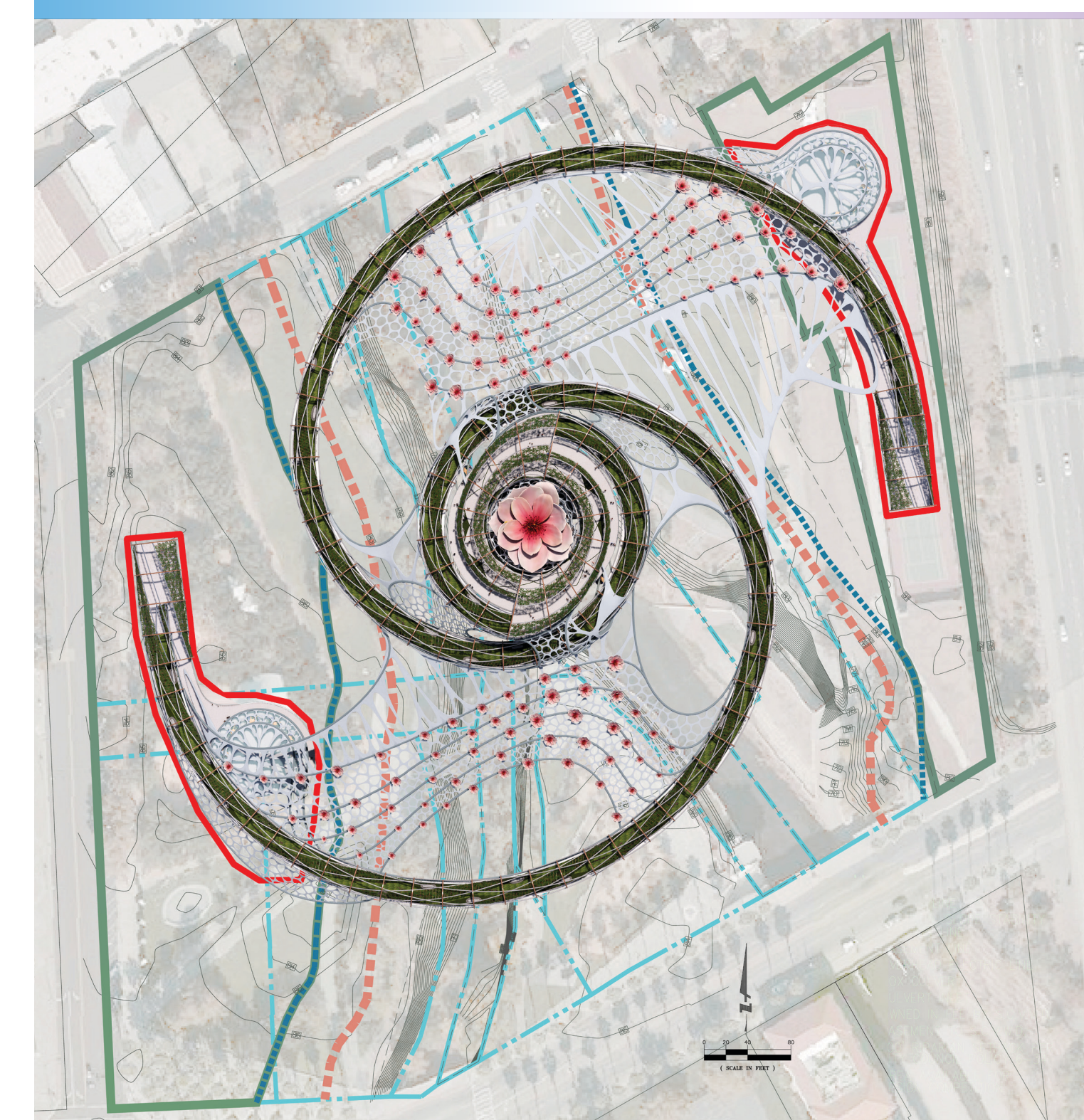
The Iconic flower is a **fusion between Nature and technology.**



The design language and experience is reminder that our way up is to work with Nature, not against it. We look to Nature to find functional design principles and create solutions for net-zero.



Elevation View



Plan View

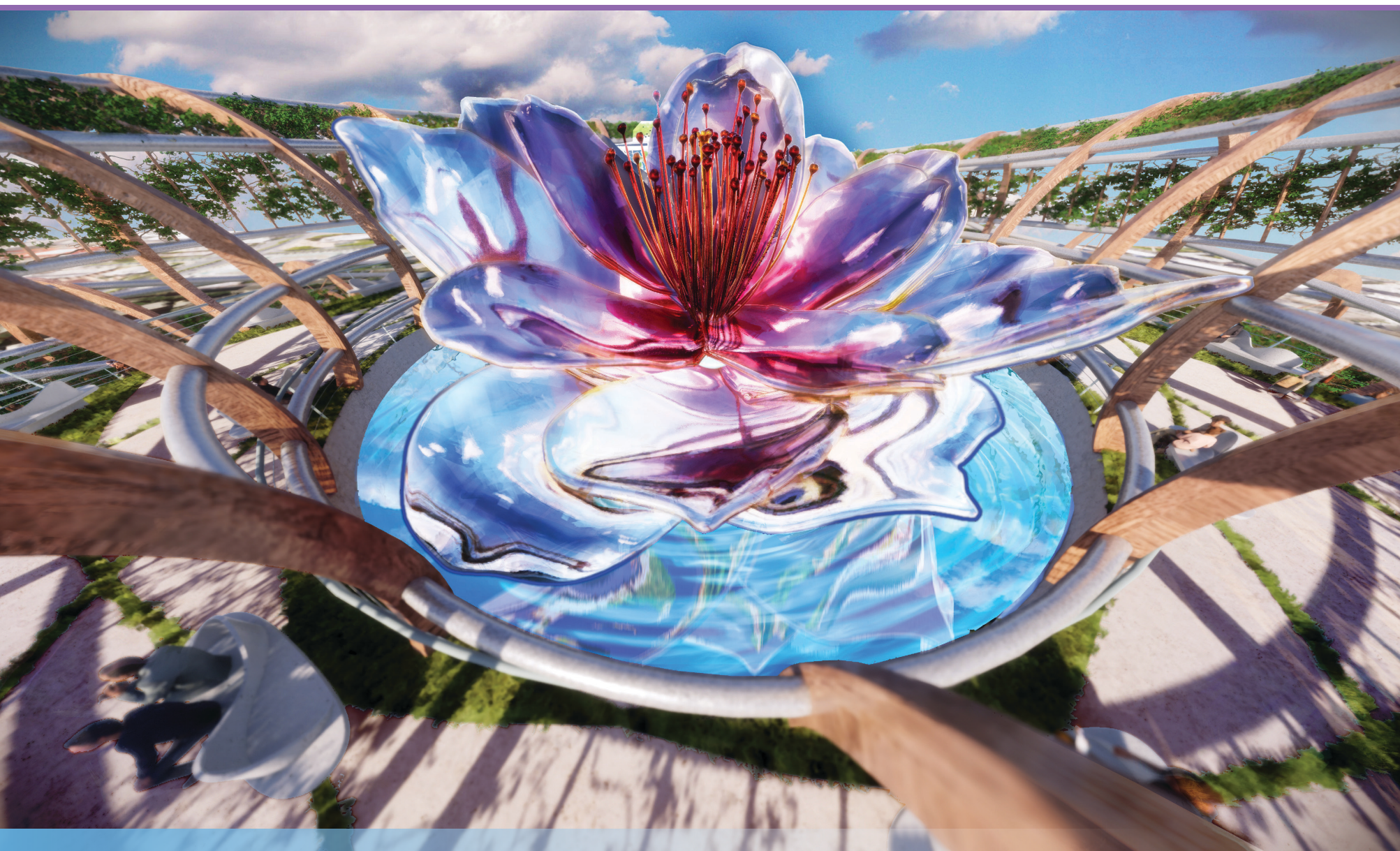
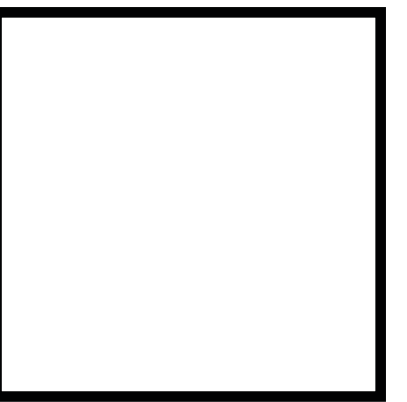
Legend

- Parcel Line
- S.C.V.W.D. Slope Stability Setback Line
- Easement Line
- OH Overhead Electric Line
- Box Culvert
- Culvert Inlet
- Owned In Fee By S.C.V.W.D.
- Easement To S.C.V.W.D.
- 100' Riparian Setback Per City Council Policy 6-34
- Area Available For Design Competition
- Foundation Footprint

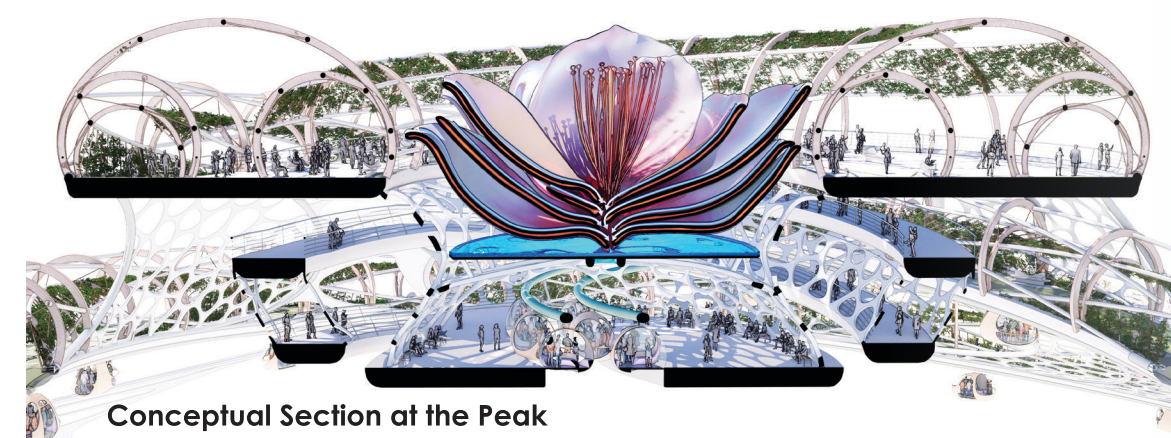
An Icon Awaits

The Apricot Blossom

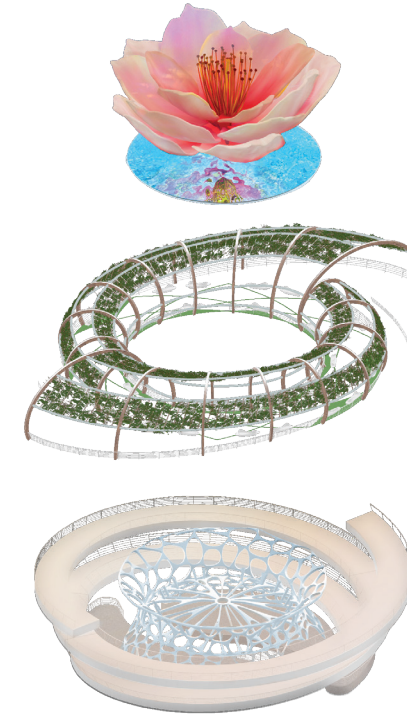
Our vision is an integrated collaboration between Architecture, Engineering, Art, Sculpture, and IT Technologies to create a destination with distinct identity



Conceptual Rendering of the Collection Pool and Apricot Flower Sculpture



Conceptual Section of the Peak



Iconic Apricot Flower

The Apricot flower is an iconic symbol and a sculpture that collects water through condensation from the ambient air with the petal's double layer cooling system and maximal surface area.

Reflection Pool

A shallow collection pool tray below the flower collects regenerated water and uses gravity to irrigate the vegetation.

Viewing Plaza

The peak of the experience is the plaza, an elevated park that connects guests with the sky above and Nature within.

Two DNA like spiraling ADA ramps connect guests to a tramway load/unload station below the water collection tray.

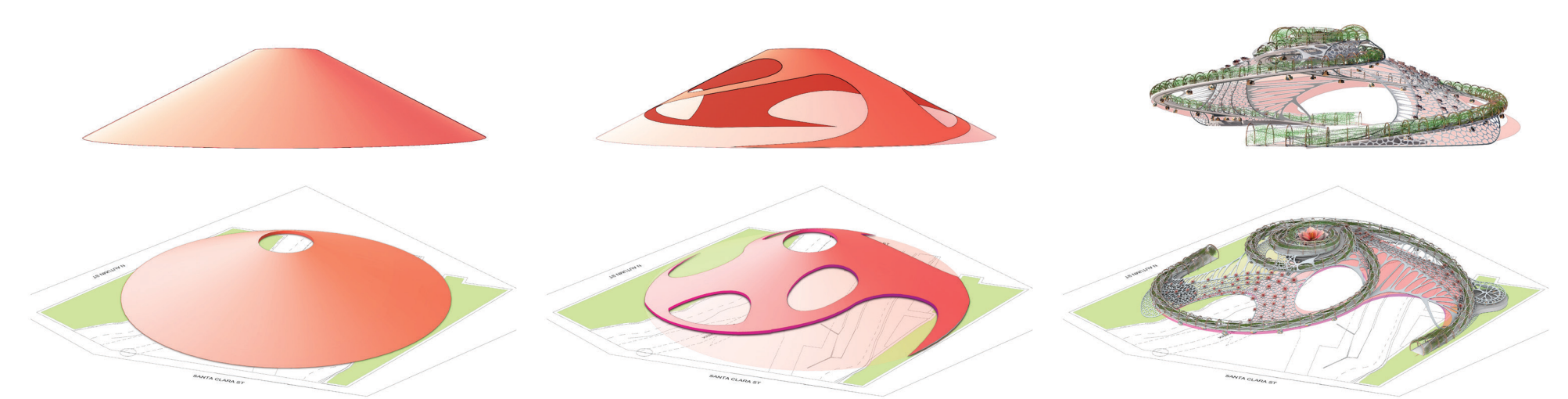
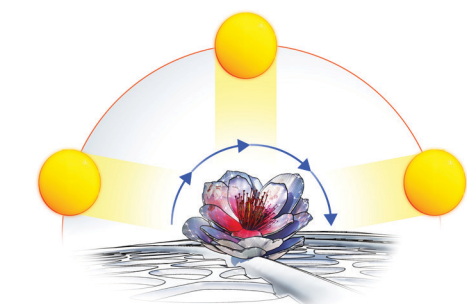
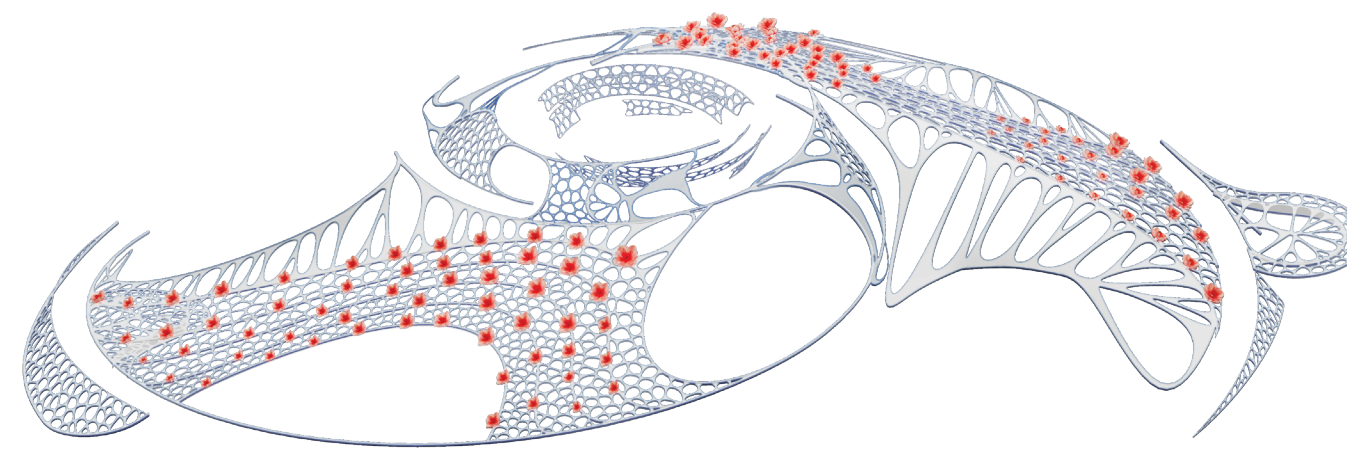


Conceptual Renderings of Solar Buds

Automated Solar Buds

Each small apricot flower is made of solar cells on a pivotal base that moves with the sun. The petals close at night to prevent damage.

Solar cells help provide net zero energy for the Tramway and nighttime lighting.

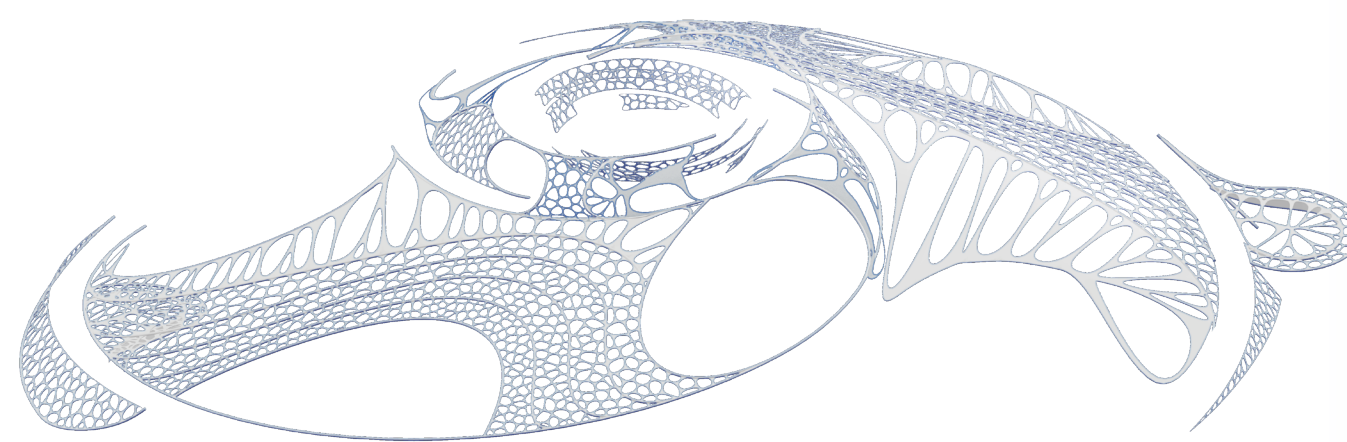


Cone Transformation Diagram

Structural Diaphragm

The **parametric structure** is derived from a basic cone shape with cutaways and two long foundations spanning both sites.

Composed with light-weight fiber reinforced concrete, high tension steel to create a dynamic architecture; capable of automated responses to data to achieve a high-performance response in high winds and earthquake



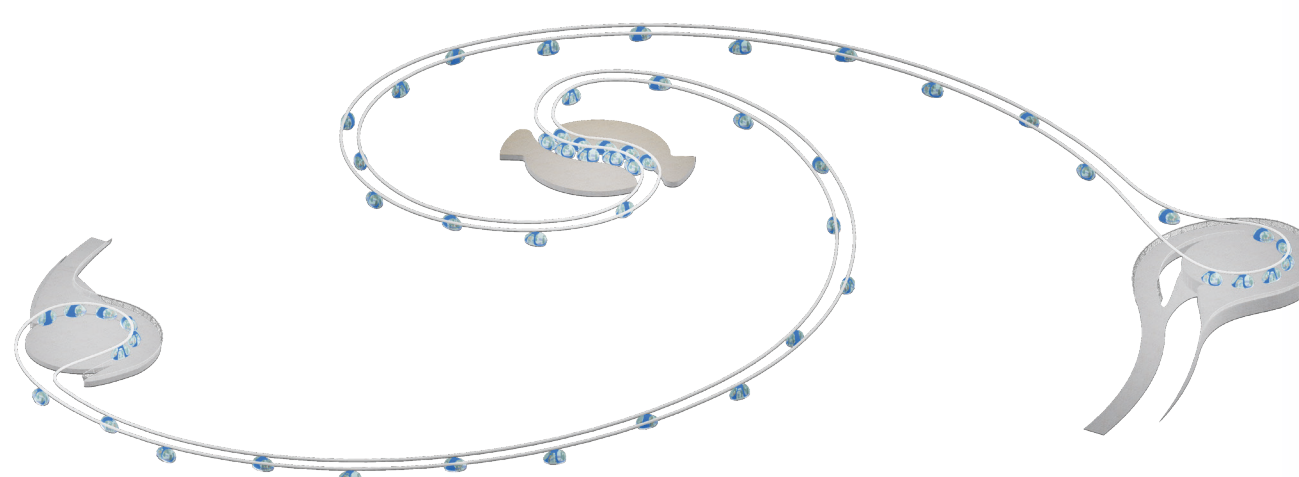
Conceptual Rendering of Landscape and Pergola Vines

Aerial Tramway

A maglev based visitor transporter is mounted to the main spiral structure.

These sky cabins transports up to 10 guests, and provide the opportunity for disabled visitors and an unforgettable experience.

There are load and unload docking stations found adjacent to both ground-level entrances, as well as at the top center of the Landmark.



Conceptual Rendering of Load and Unload Areas

Sky Bridge

Two spiral walkways are elevated from each site with landscape, vegetation and shaded rest areas under wooded pergolas. The walkway represents the formation of a galaxy.

The garden walkways, up to 30' wide, are an elevated spiral that provides a unexpected hillside experience. The sky bridge connects both sites to create an elevated Park to celebrate uplifting humanity and with achievements of Silicon Valley represented by a reconnection with nature for a greater future.

