

Site Map

- The Earth is almost permanently surrounded by a cloud cover that can reach 50% of its total area, which makes clouds an atmospheric component of great relevance. As a technological instrument, clouds have been taking over the global market. Today, we are all connected in some way and every second we create new data, which can be stored and accessed anywhere on Earth.-

By the capture of rainwater and its reuse in the various forms of H2O, as precipitation, cooling the building like artificial rain oozed by the facade, or evaporation keeping the humidity of the air controlled. Providing a pleasant microclimate for the development of the park, stimulating the generation of energy through the photosynthesis of plants, and the purification of air.



The building stores the intangible, be it digital art as a form of expression that arises from the imaginary, projected in the galleries, as also the human connectivity, by the personal interactions found in the instruments of activation of the area as restaurants, bars, and cafes. Shelter the immaterial, the affectivity, the relationships, the imagination, the invention, leading society to reflect on the importance of the abstract in our lives.

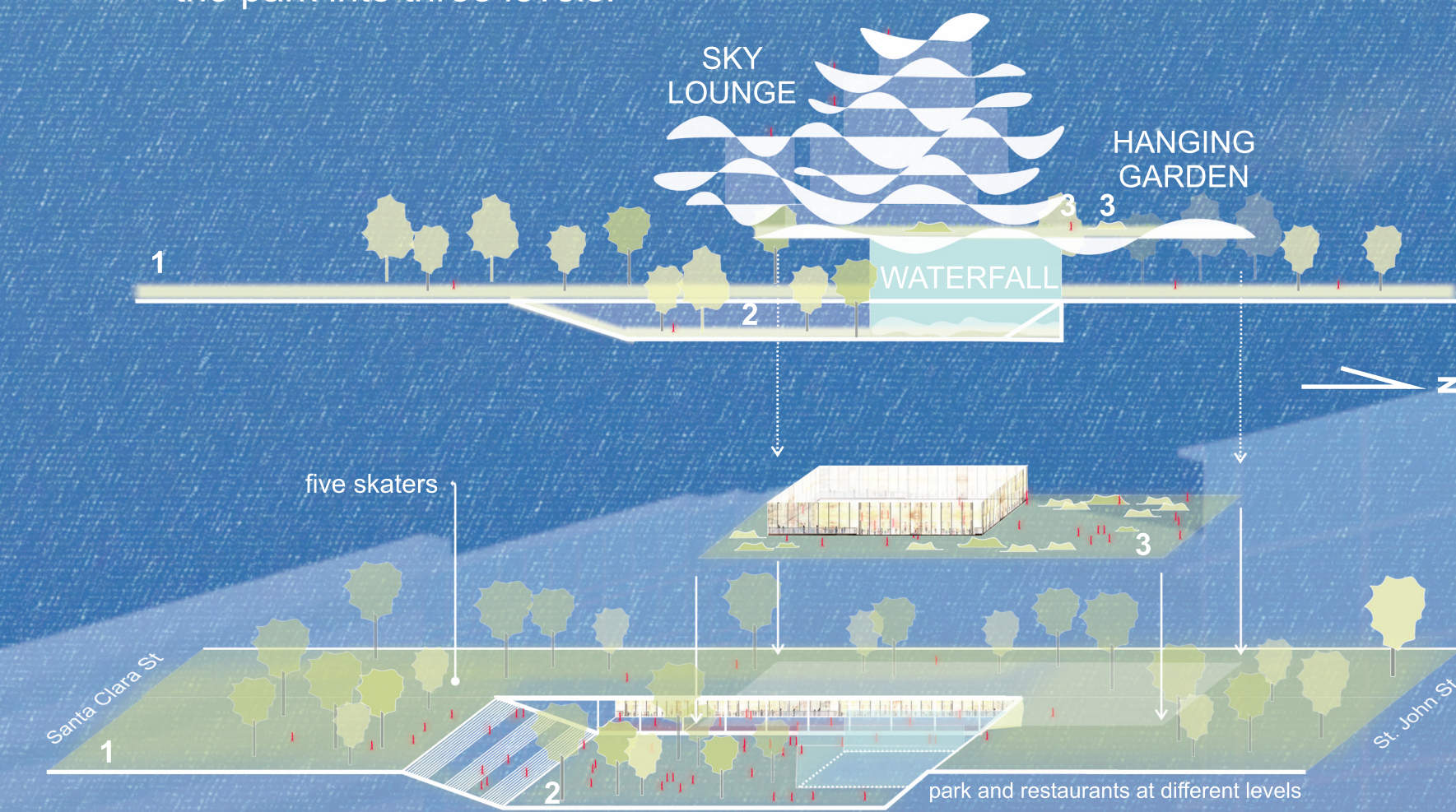


The project uses renewable energy sources, by nature, with use of chemical energy, and solar energy, and by users, using people's walking as a source of kinetic energy. As a new chain, that encompasses human life, biological life, and built life.



the sky's the limit!

Respect the relation of the natural environment, and stand out in the city, as a void, that there is here art, innovation and sustainability. The icon interlace with the natural space, transforming the park into three levels.



CLOUD

DIGITAL ART MUSEUM



Transforming agent of local microclimate.

Like a cloud, the project interprets the biological and digital function, and brings about the combinatory effect of these two worlds.

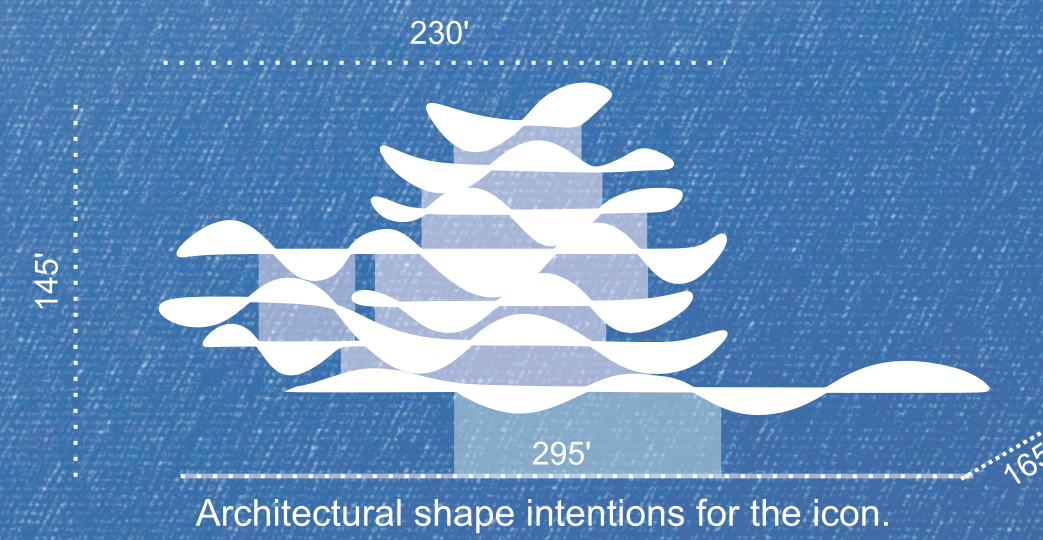
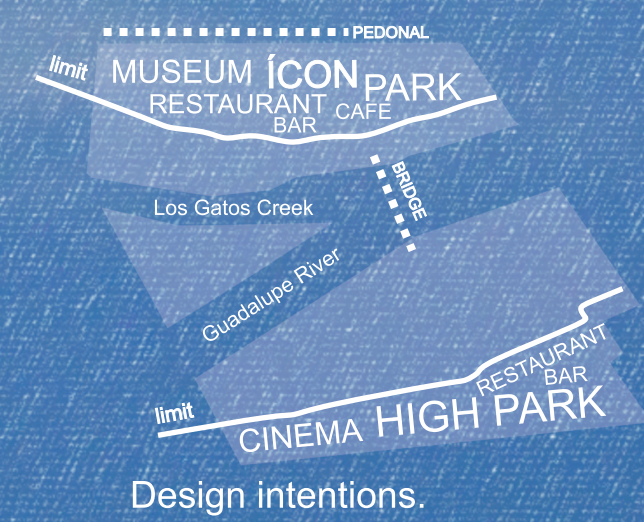
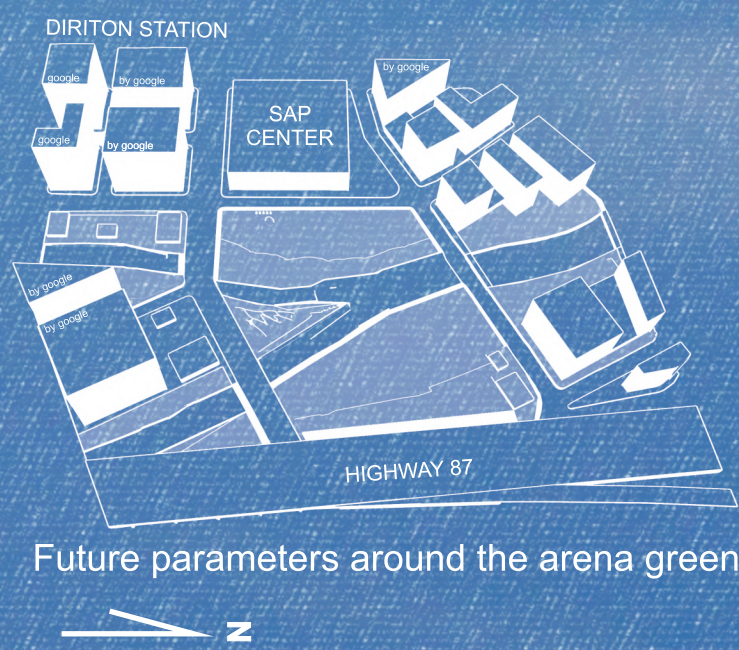
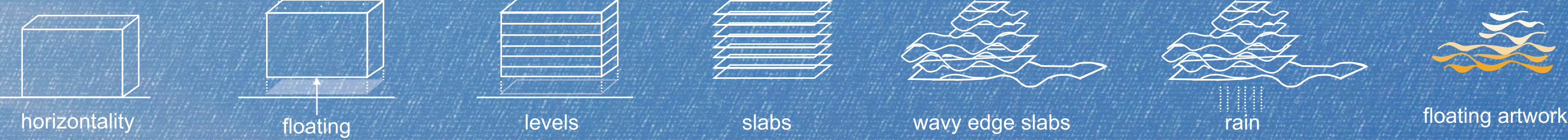
come up walk in the CLOUDS!

In a strategic place of the city, where rivers meet, the dense vegetation reflects the importance of parks as an urban factor of relevance, a space for socialization and nature, which must be protected for the next generations. This is an urban oasis, where an icon makes a difference by combining nature and architecture.

It appears as waves at different levels, giving a fluid effect to the volume as the edges of the slabs rise and fall.



CONCEPT DESIGN



In the night becomes an urban work of art

with the lighting transmitting to the observer the sensation of the building floating.

