

RAINBOW FRAME



RAINBOW FRAME is a potent structure to its immediate context & to the place where it belongs. The inspiration & concept of the structure lies within the site where it resides which beautifully portrays the confluence of two rivers meeting.

San Jose history has always been in a remarkable conjuncture, be it in land, inhabitants settlement, economic or education.

The intent of the structure clearly indicates the past & the present being amalgamated & culminated to arrive at its diagram.

The structure stretches upto 200 feet in height & sprawling around reaching upto its threshold trying to engulf all of it can.

Two different constituent creating a junction and emerging on altogether a whoopee.

Structure takes minimal amount of ground coverage still trying to bind all the spaces it can.

It tries to retain all the existing environment who were been part of this land.

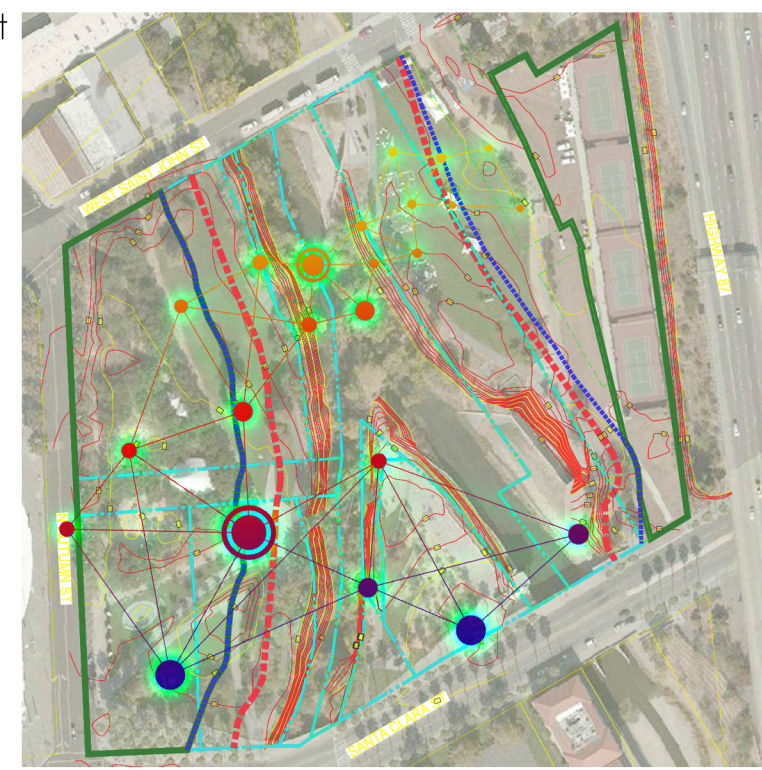
The space coverage it does in its accordance with height and its sprawling nature tries to generate the energy.

Two major energy generative techniques are being embedded in the structure.
 1: The rings outer surface is clad with solar panels
 2: The cross section of the rings have a cylindrical fan with which it generates power.

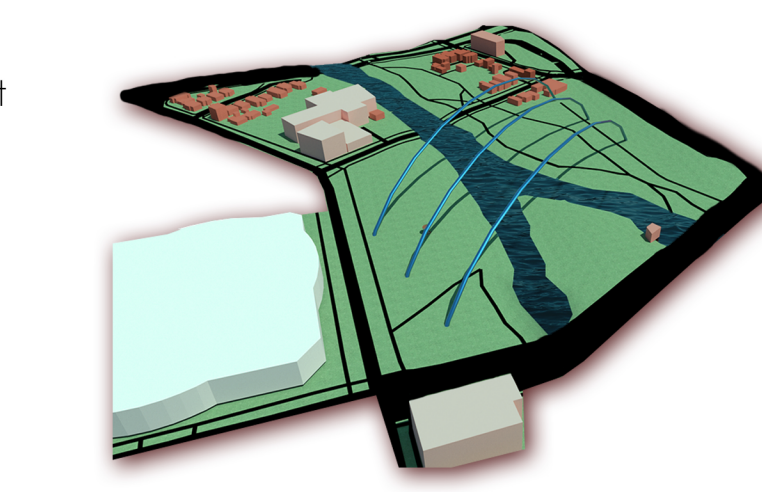
These two major sources where in it generates power for the premises.
 The third major source is the one when it rains it directs the water to the tunnel filtering through the fan blade which segregates water from any particles and thus generating power.

The design also creates many view points all around the premises thus creating a revenue generating setups like eateries & selfie points.

It contains a 60 feet erect structure which has all the power generating equipments stacked up encircling the lift which again runs at its self generating power.



Identifying nodes within the premises where it can link different spots together for commerce and for different play spots with which it can retain visitors.

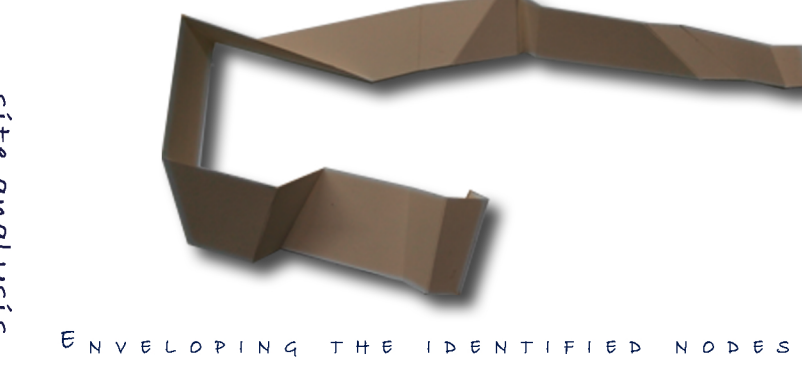
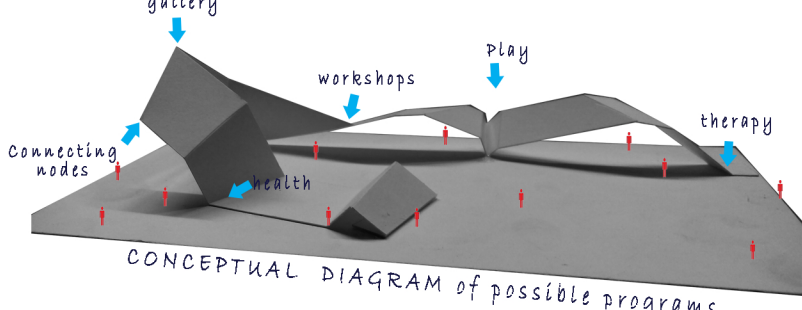


Connecting both different sites visually & physically.

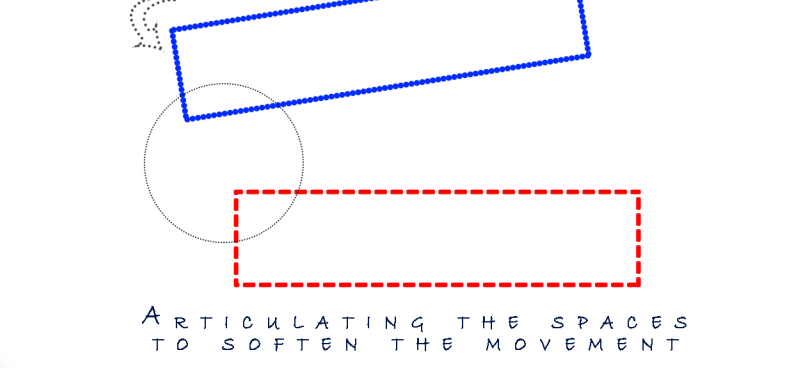


Commerce possibilities in & around the site

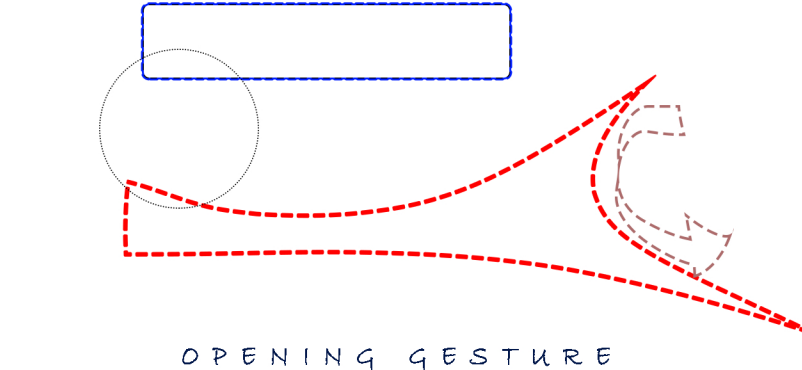
Building the concept for the structure



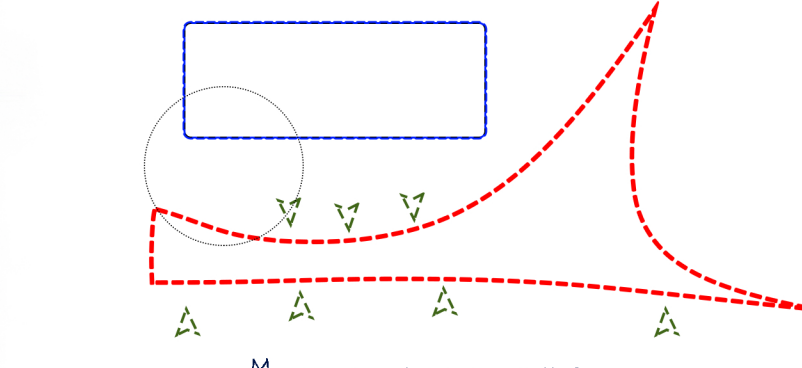
ENVELOPING THE IDENTIFIED NODES



ARTICULATING THE SPACES TO SOFTEN THE MOVEMENT



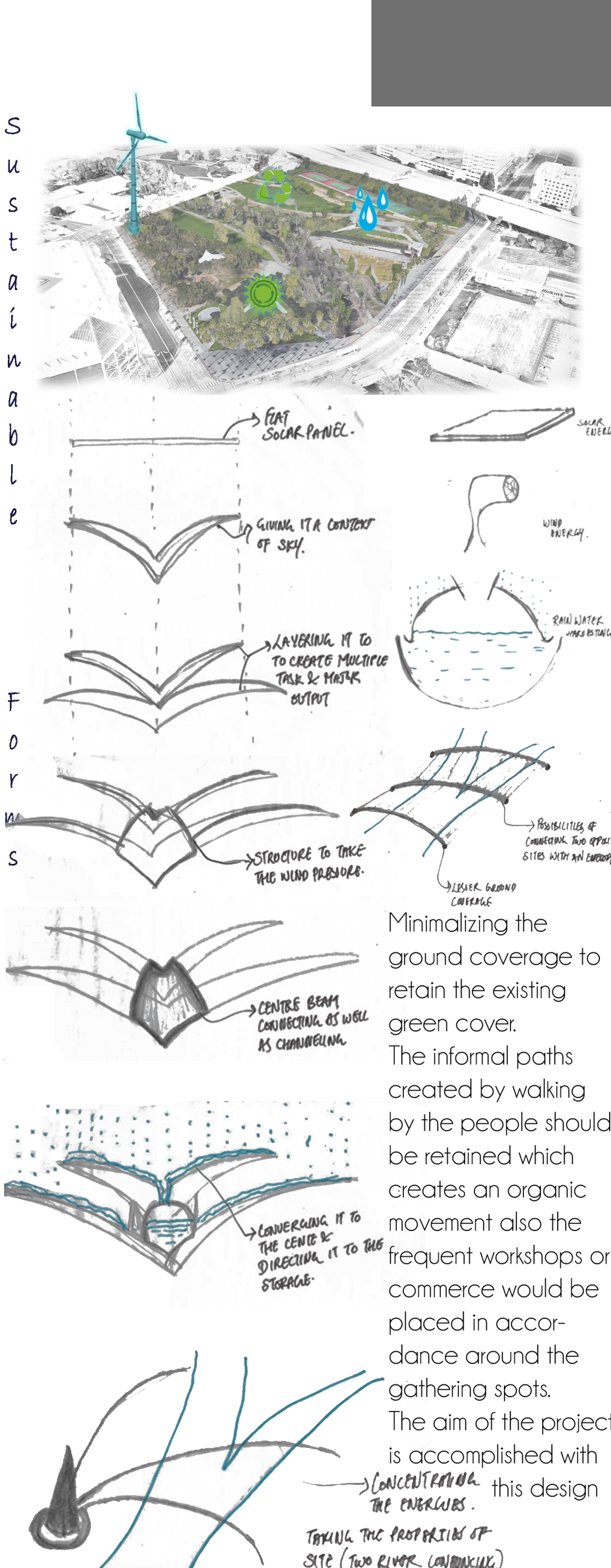
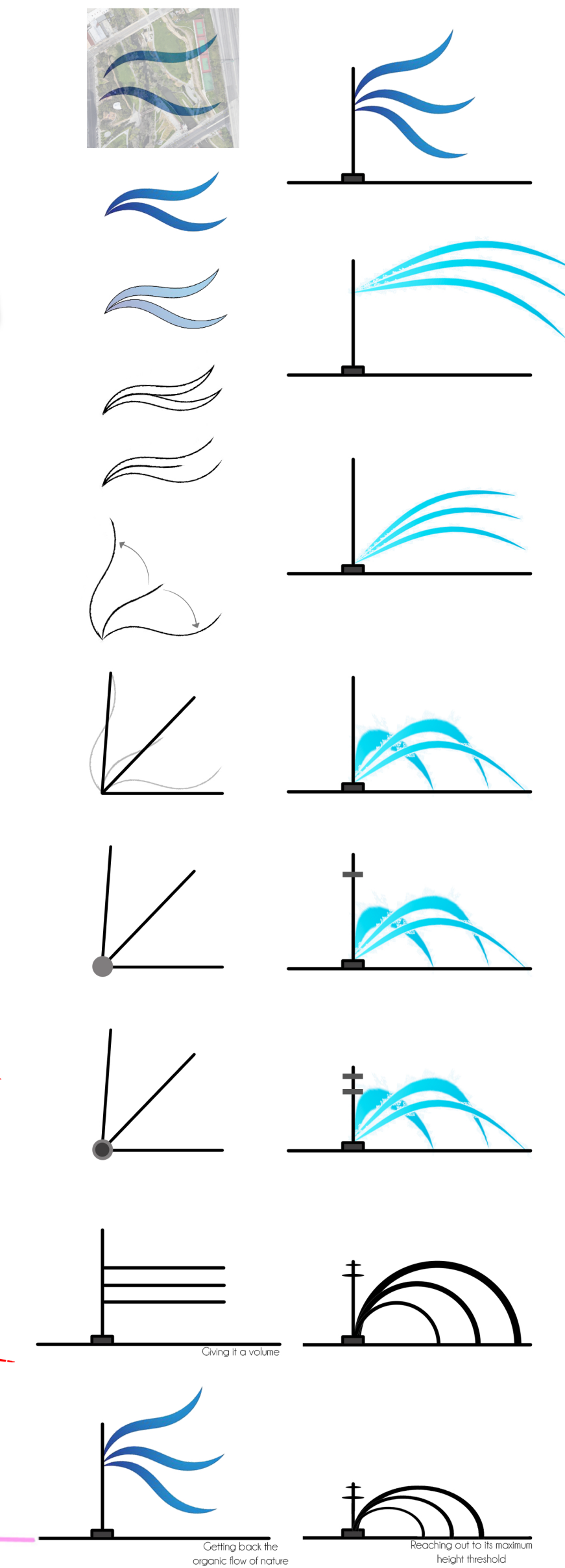
OPENING GESTURE



MINIMIZING THE GROUND COVERAGE



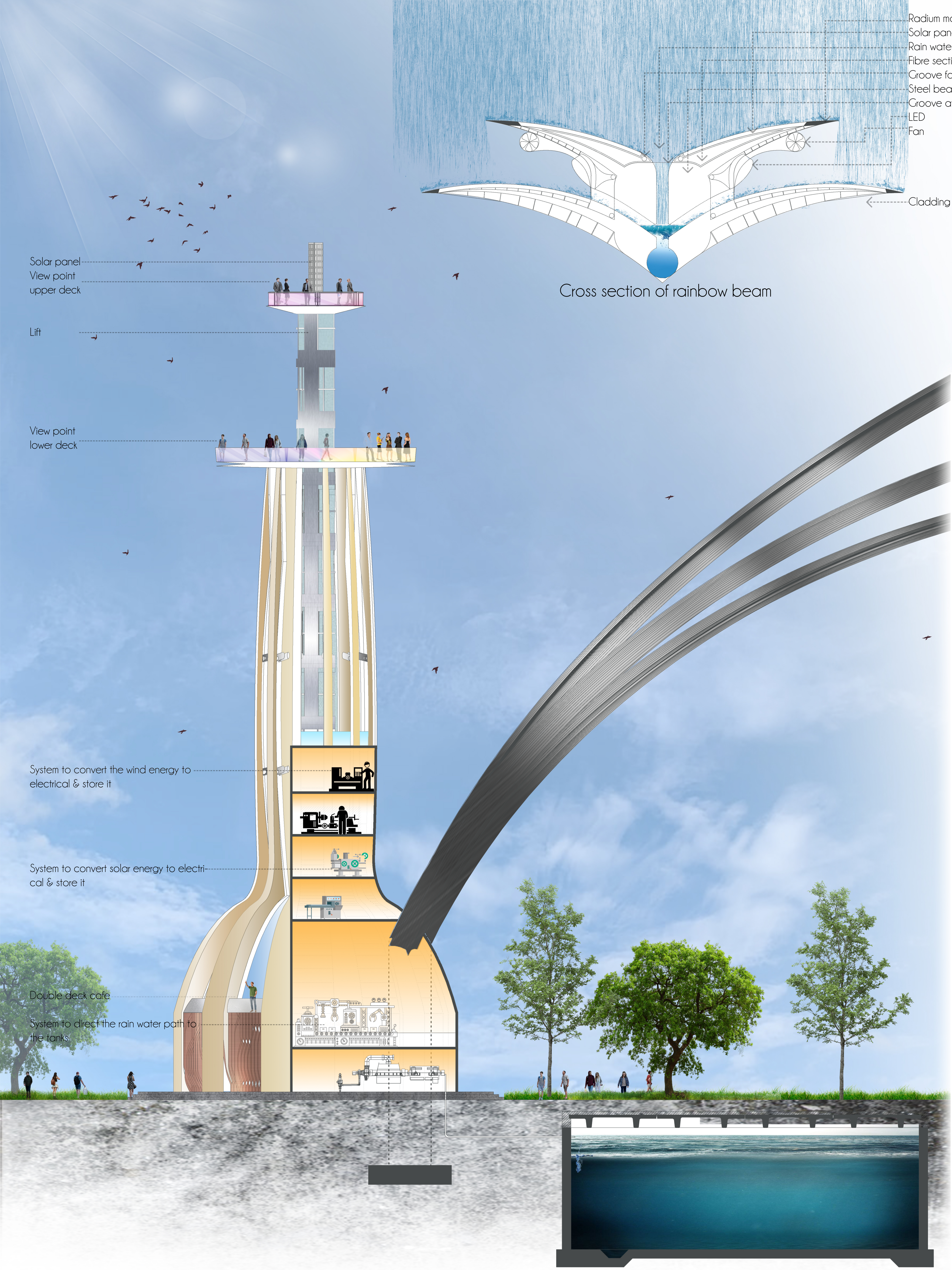
Human & vehicular density



Minimizing the ground coverage to retain the existing green cover. The informal paths created by walking by the people should be retained which creates an organic movement also the frequent workshops or commerce would be placed in accordance around the gathering spots. The aim of the project is accomplished with this design.

Minimizing the ground coverage to retain the existing green cover. The informal paths created by walking by the people should be retained which creates an organic movement also the frequent workshops or commerce would be placed in accordance around the gathering spots. The aim of the project is accomplished with this design.





- Radium material
- Solar panel embedded on steel section
- Rain water flowing through the groove
- Fibre section at 10" intervals
- Groove for electric wire
- Steel beam
- Groove at 2" interval for rain water
- LED
- Fan

