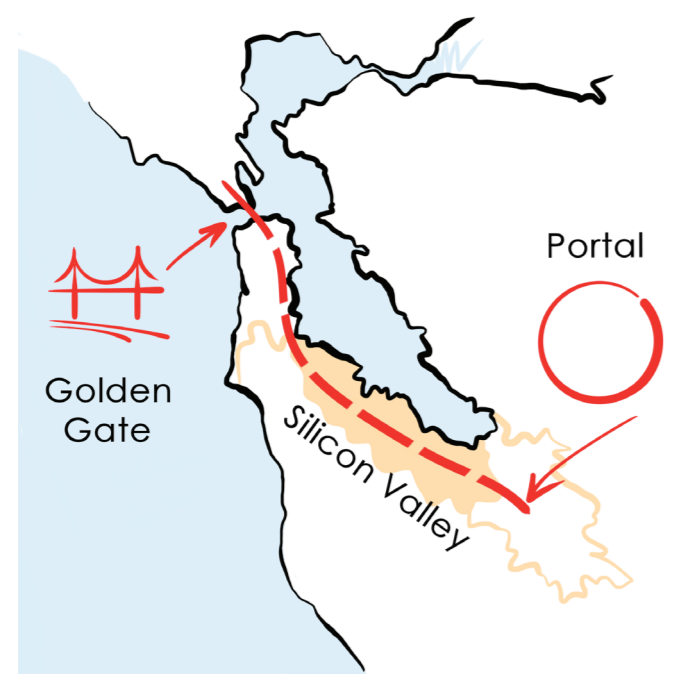


A NEW ICON FOR SAN JOSÉ

URBAN VISION



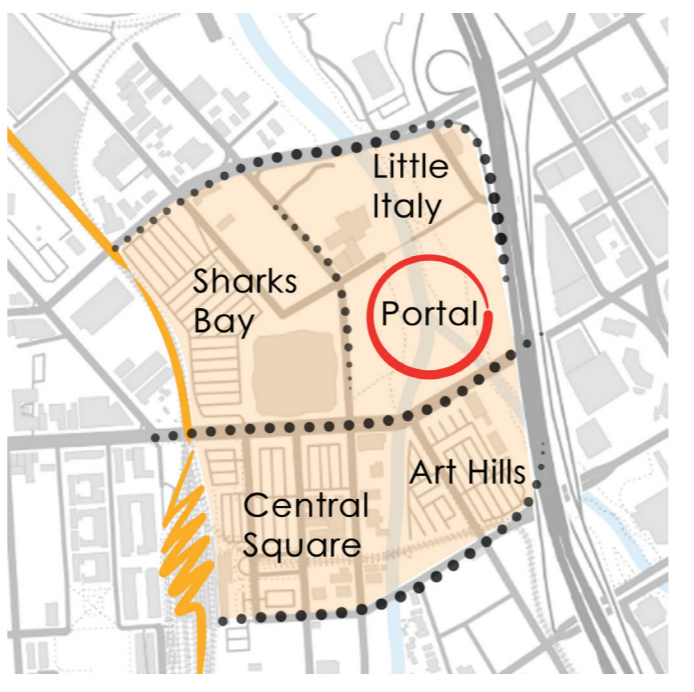
VISION



CONNECTION



IDENTIFICATION



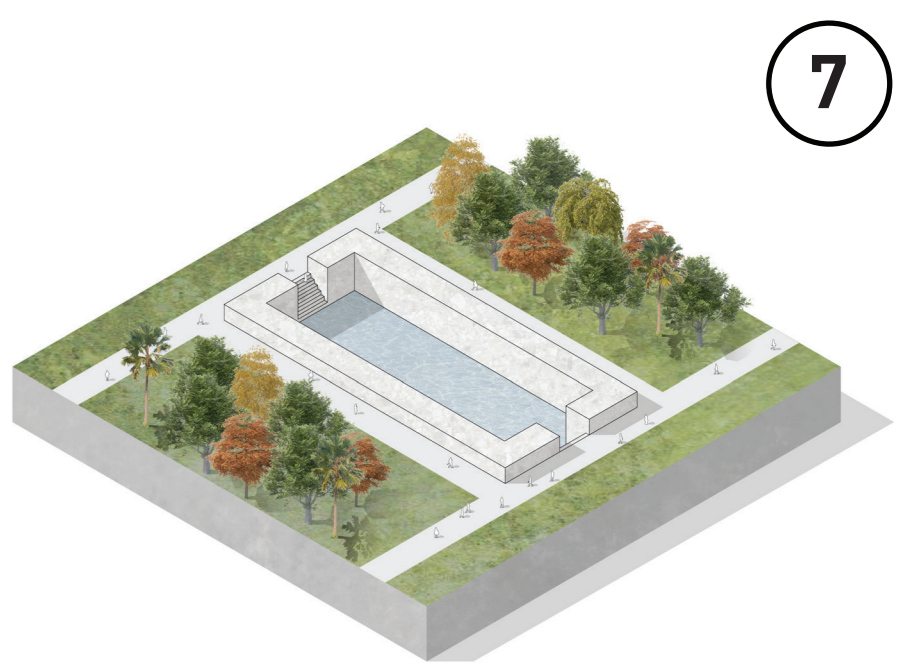
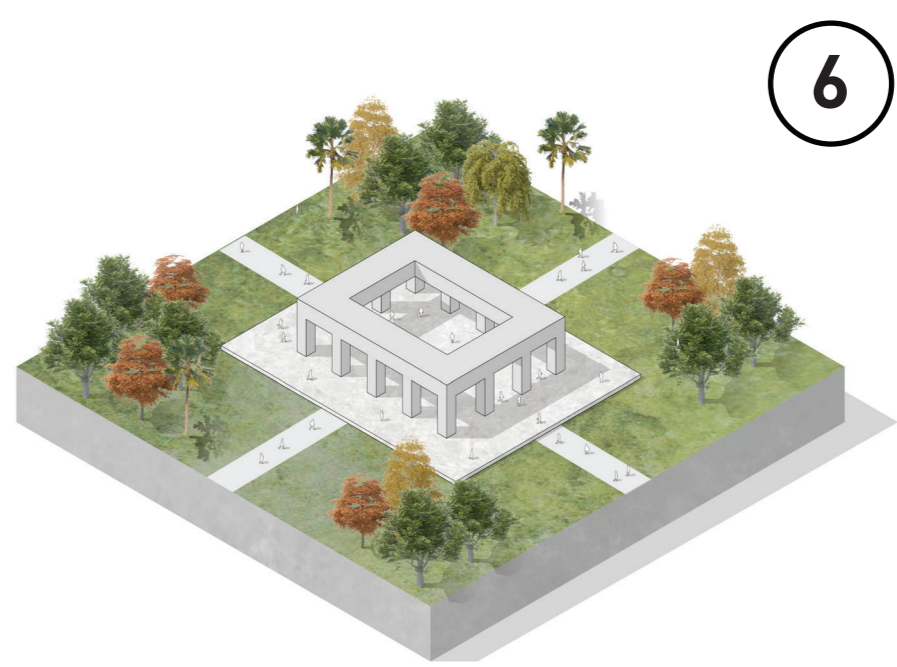
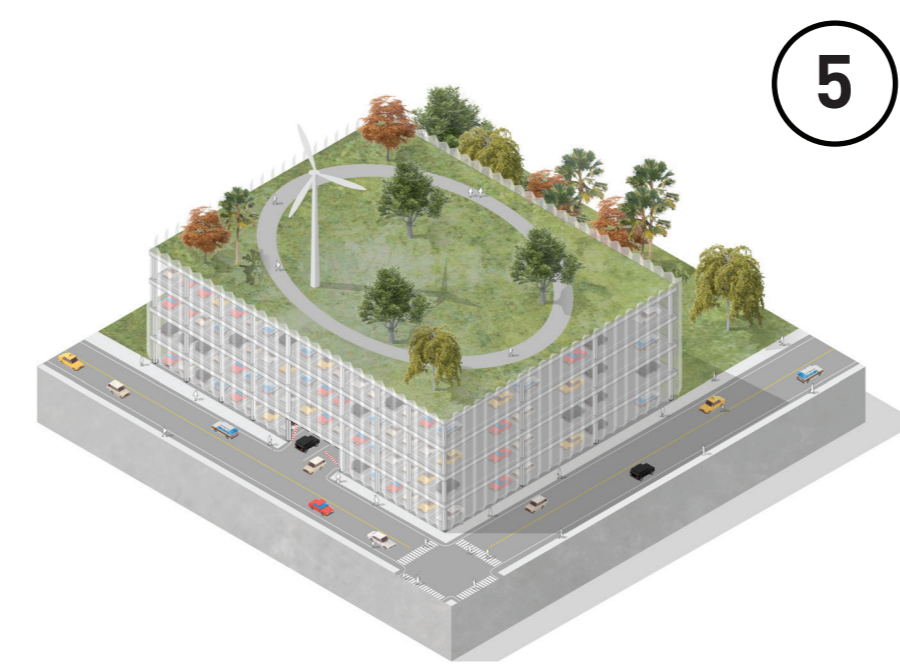
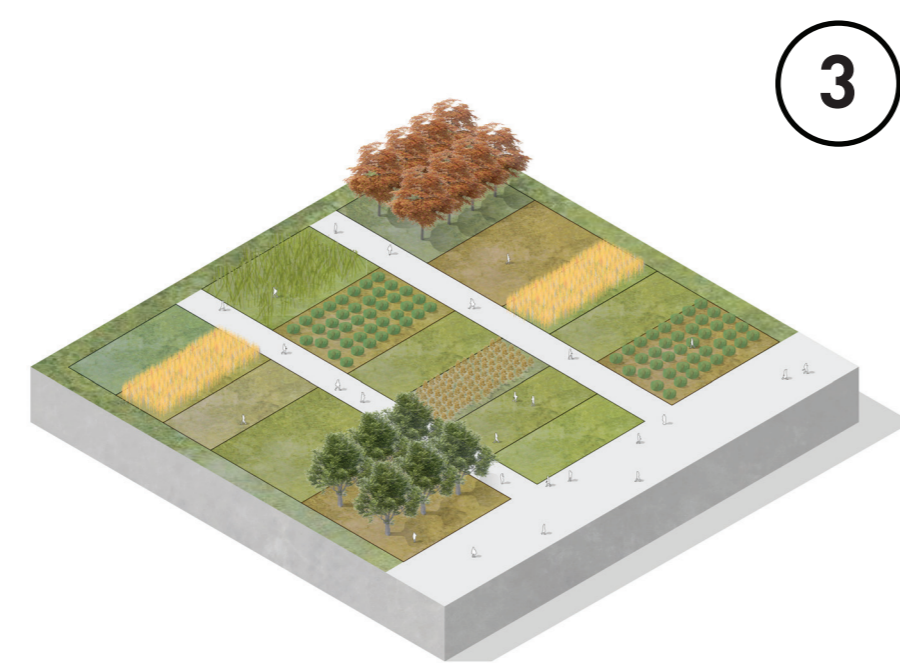
PARK

A Vision for San José

San José is a city of open minds and hearts, a place of big dreams and visions to fulfill. It has become the capital of inventions and innovations. It is the striving energy of the Silicon Valley that inspires us to imagine its new iconic landmark as an opportunity for an even bigger vision for San José. A vision for the city center beyond the competition site, to upgrade and enhance the area around the new landmark, bringing culture, art and a new lifestyle into the heart of the city.

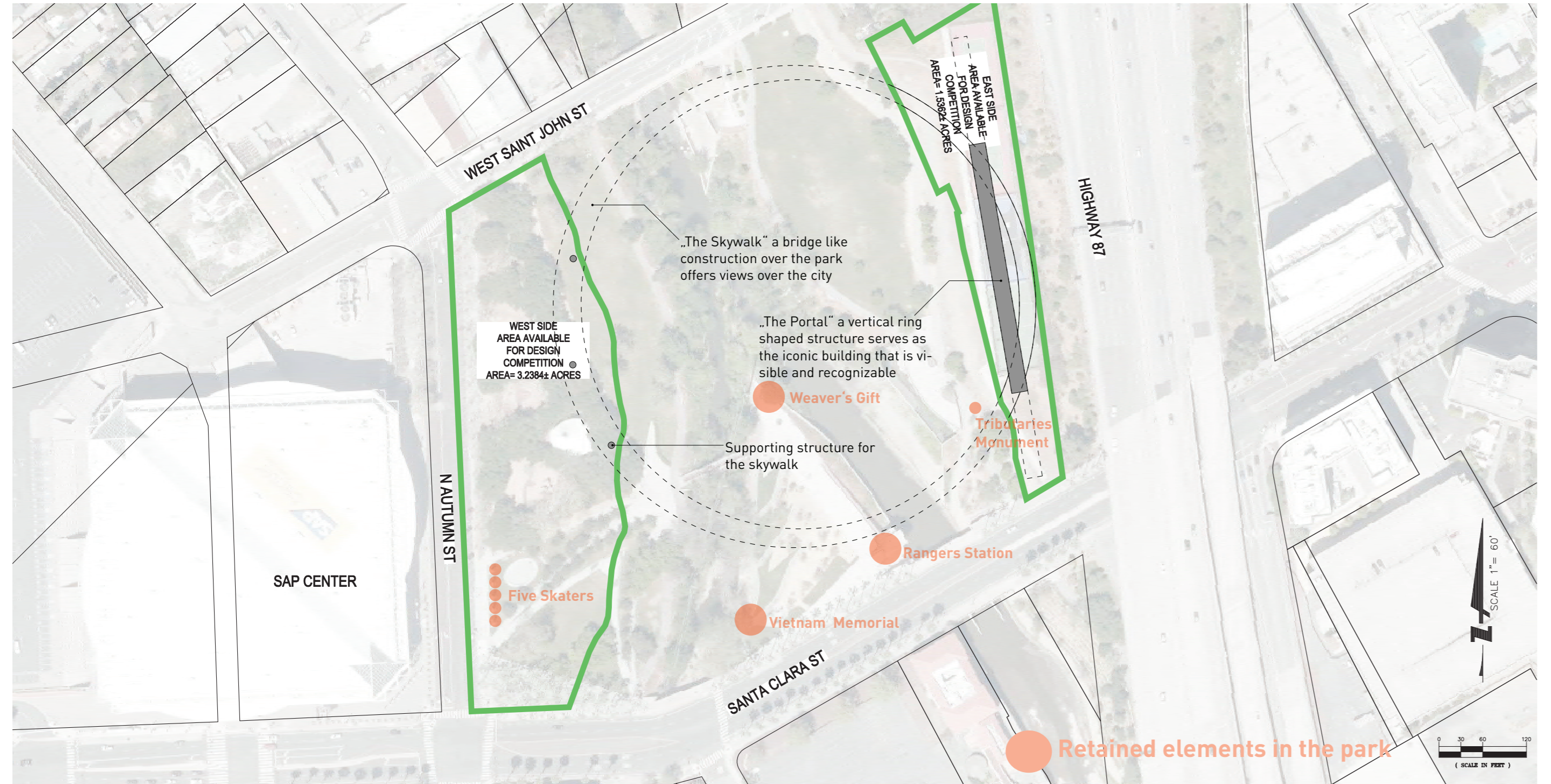
The station and its district, together with the new landmark, are the main entrance to the city and the valley. We imagine the following steps to improve the area and make it more attractive for its community and its visitors from all over the World.

- We propose to rearrange the car-focused city planning by creating compact parking garages, with bike and scooter sharing opportunities and green usable roofs. Streets and former parking lots can then be converted into parks and pedestrian areas.
- The "Sharks bay" facilities near the SAP arena will strengthen the recreational vocation of the area.
- A new park in front of the station will create a public realm to welcome arriving guests.
- The "Adobe Art Hills" will provide a unique space for artists and performers.
- An open arena will offer opportunities for open-air events, concerts, etc.
- A urban gardening area will provide a chance for a relaxing walk, enjoying the local vegetation.
- "Little Italy" will bring authentic restaurants and a local market to the people.



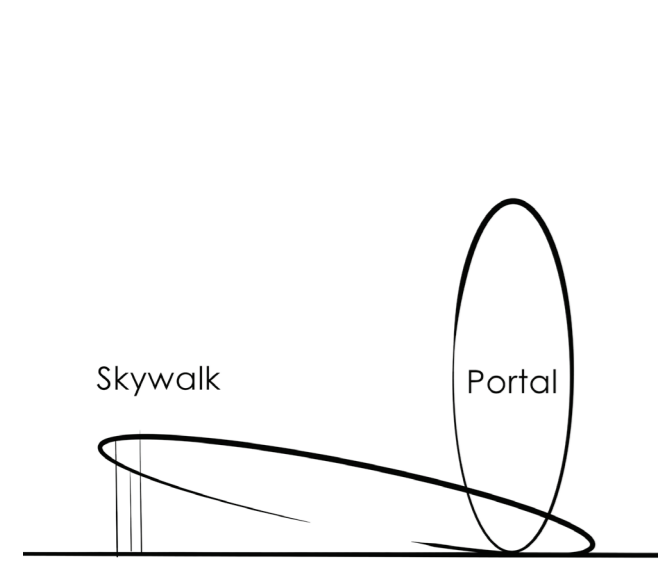
A NEW ICON FOR SAN JOSÉ

THE PORTAL



The new Landmark has the iconic shape of a circle. Situated between San José Station, Guadalupe freeway and San José International Airport, it becomes a symbol of motion, of unity and of our own planet. It represents the entrance to the Silicon Valley and to its largest city. As integral part of the monument, the skywalk offers visitors impressive views of the city and of the surrounding landscape. Of a pure white color during the day, the Portal will shine at night of a mild light, projecting the iconic circle against the dark blue sky over San José. The size and the shape of the landmark make it visible and recognizable even driving past or flying over it. It is a Net Zero building.

- Portal**
(Definition of portal noun from the Oxford Advanced Learner's Dictionary)
- a large, impressive gate or entrance to a building
 - [computing] a website that is used as a point of entry to the internet, where information has been collected that will be useful to a person interested in particular kinds of things



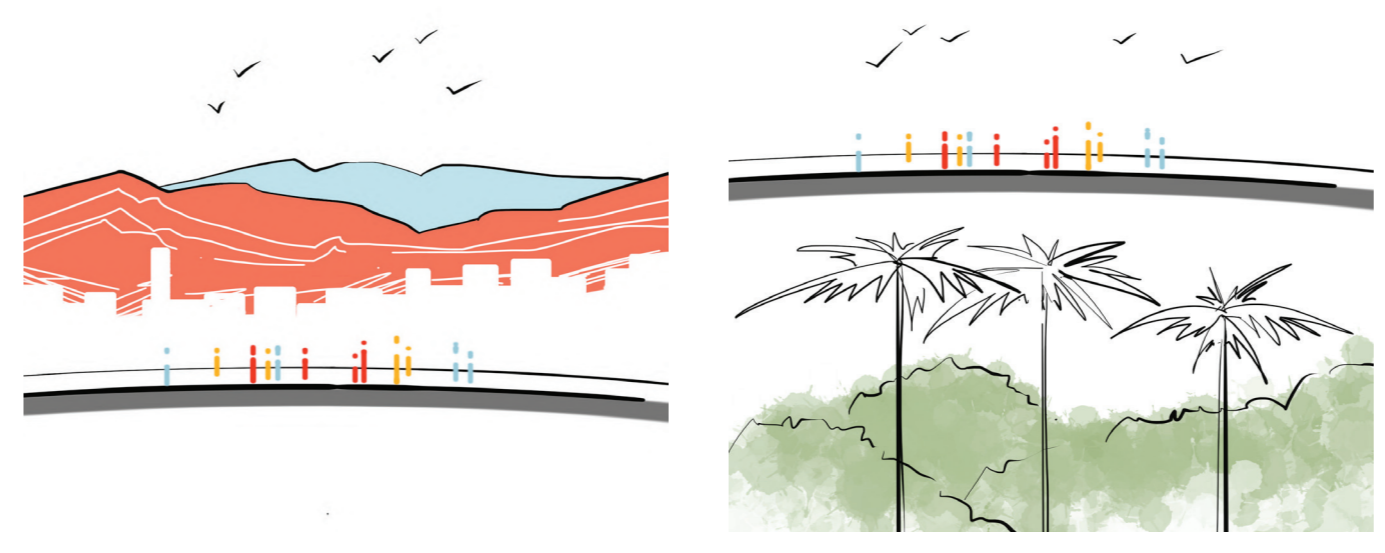
ICON

Both by day and by night the Portal has a clear Iconic appearance.



VIEW

Visitors can enjoy a view over the top of the trees in the park towards the city and the landscape.



NET ZERO

The structure is made of renewable and recycled materials as much as possible. To regain energy we mount not-reflecting solar panels on the surface.

