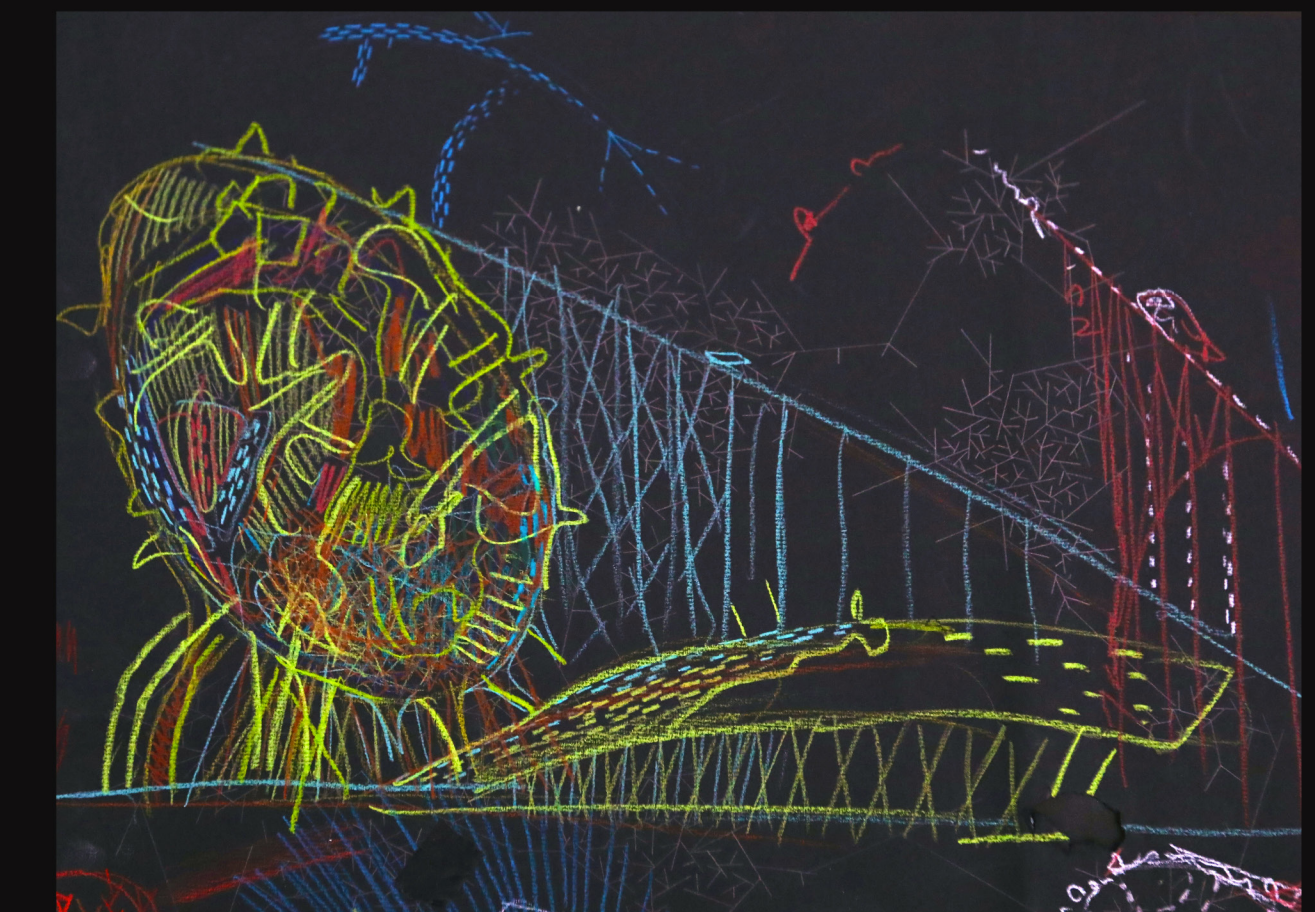


Elevation - Main Intervention

### The Galaxy



Exterior Perspective - Main Intervention

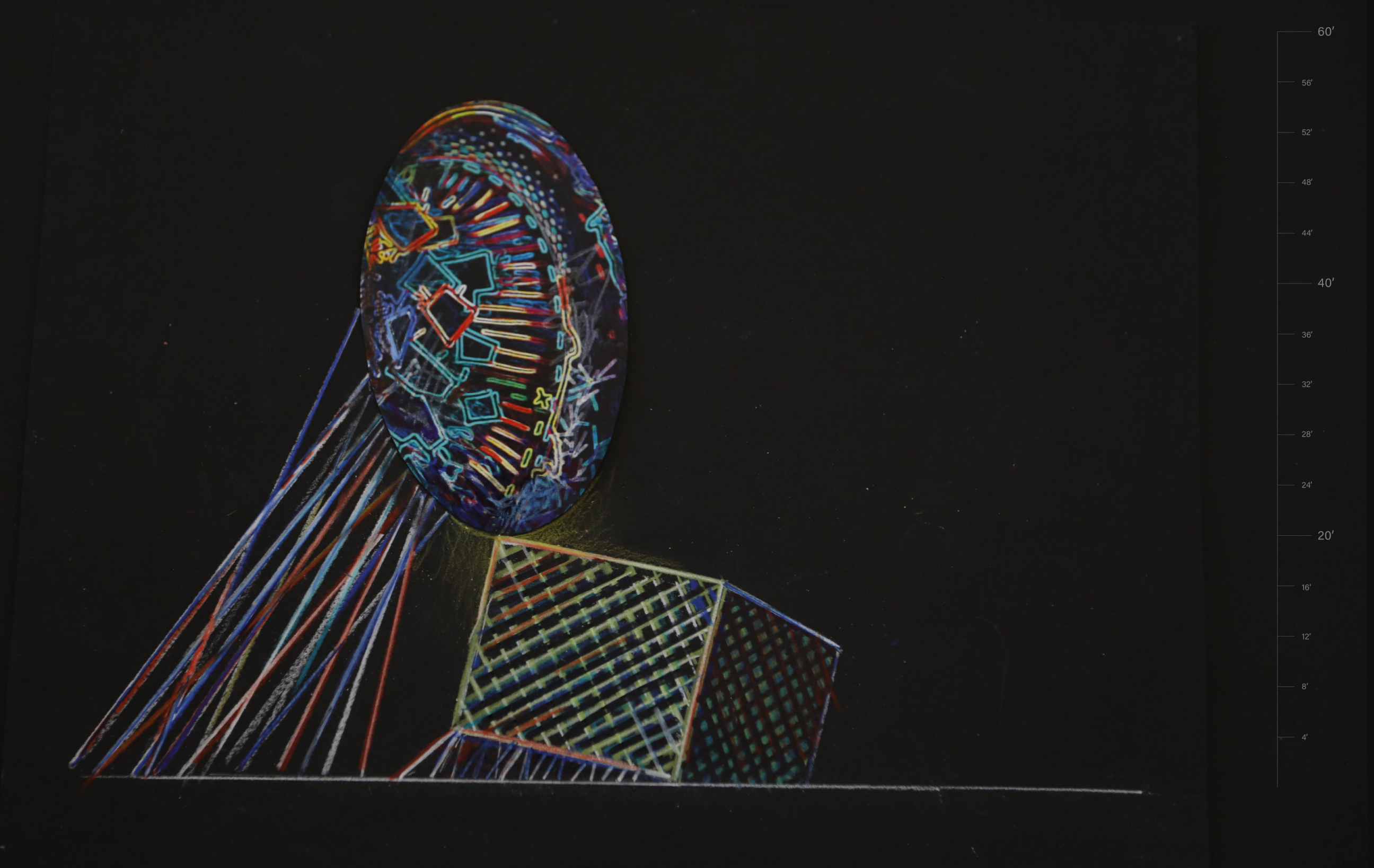


Site Plan

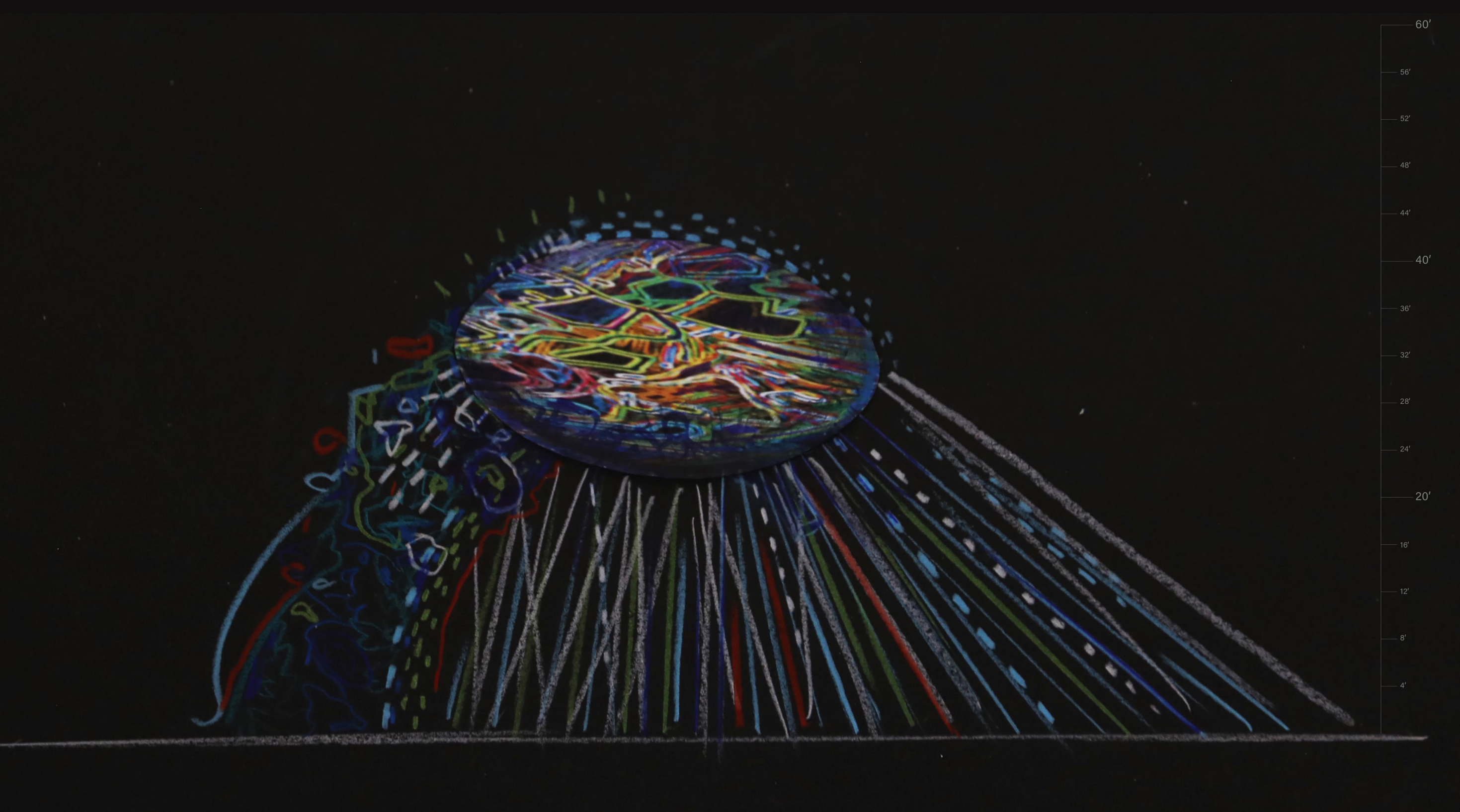
- 1 Main Intervention
- 2 Satellite 1
- 3 Satellite 2
- 4 Satellite 3



Elevation - Satellite 1



Elevation - Satellite 2



Elevation - Satellite 3

As you turn off Hwy 87 onto Santa Clara Street, you are surprised by a colourful, shimmering structure twenty storeys high. As you keep driving, you notice shuttles travelling up and down the adjacent edifices. There is a crowd of people waiting at the entrance, and you can't help but pull over. "The Galaxy," you tell your kids and before you can even get to the main entrance, they've googled the Creative Technology Center built especially for them that offers opportunities to test the latest inventions from Silicon Valley. You're excited to discover that the entire structure is informed by the cutting-edge discoveries – intelligent surfaces that respond to touch, express feelings through their appearance and sound, and transform data into a set of coherent responses. From as close as the Riparian Corridor, and the center of San José, to as far away as the satellite generated news about the climate and weather around the globe, the information is gathered into an algorithm that converts it into a collage of images, chromatic scale, and musical harmony – full sensory experience.

Your partner takes a shuttle up to visit the botanical garden/ green roof at the top of the Main Intervention, and you meet up at the foot of the ellipsoid for lunch in The Galaxy's spectacular restaurant. At the table, you learn the water you're drinking was rainwater especially harvested and filtered. You are experiencing a net-zero project with its own solar and water collection, and waste management system.

Your kids adventure in the surrounding park and discover 'satellites' of the Main Intervention. Although they appear to be spaceships from a distant solar system, they are cafés and ice cream stands providing shade and a place to rest.

Throughout your visit, constant changing visual displays inspire the joy of discovery. The Galaxy responds to the weather—its rain collectors open in reaction to rain, and in the sun it grows 'hair'—colourful, shimmering fiber-like solar collectors that move in the wind. And when you return in the evening, the lighting has transformed Arena Green into something entirely new.

Through engagement and design, the Galaxy offers a new model of living, production, consumption, and creating connections with the natural world—a vital hub addressed to the community of future creative citizens. You are faced with the breath-taking evolving and constantly updated techno-organism fit for the 22 century and beyond!